

# Café

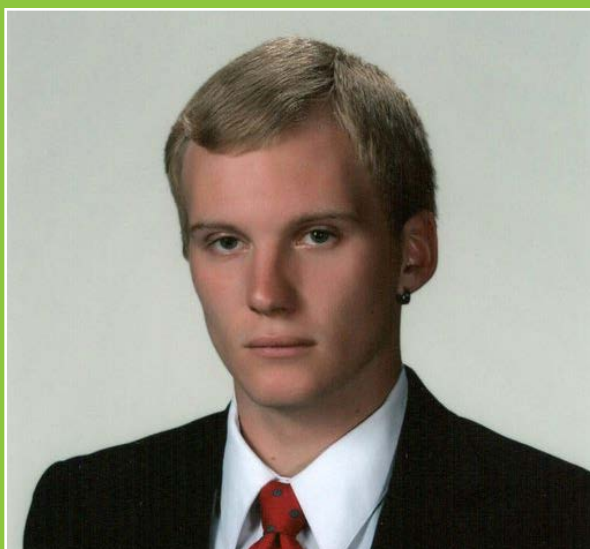
SCIENTIFIQUE  
COLLEGE OF  
ARTS & SCIENCES

SEPTEMBER 13, 2017  
NOON-1PM



## TALBOT BROOKS

Mapping Crisis: A Standards  
Approach Using the United  
States National Grid



## CHRIS SMITH

A Geostatistical Analysis and  
Risk Model of Severe Weather in  
the Mississippi Delta

**GIT CENTER**  
**KETHLEY, SUITE E, ROOM 150**  
***LUNCH WILL BE PROVIDED***