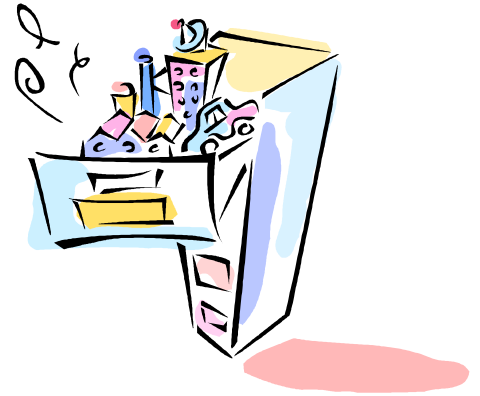


INTERVIEW QUESTIONS FOR SOCIAL WORK MAJORS



- Why have you selected a career in social work?
- What do you hope to accomplish as a social worker?
- Have you had any experience working with people of a race or sexual orientation different from yours?
- Do you feel you can be objective in counseling a teen about abortion?
- What do you think of the welfare system?
- What is your philosophy of social work?
- What techniques do you use in crisis intervention work?
- What kinds of things go into a psychological assessment?
- How do you describe your personal boundaries?
- What do you think of the recent welfare changes?
- What do you think is going to happen in the field in the next five years?
- What are your thoughts on managed care?
- Are you a member of any professional organizations?
- How would you handle a psychotic outburst in the clinic's waiting room?
- In terms of family therapy, what is your theoretical orientation?
- Do you believe in short term or long-term treatment?
- Think of a client you have liked/disliked and tell how you dealt with the counter transference issues.
- Are you an active listener? Are you able to engage clients?
- This position requires a lot of independent thinking and initiative. There is minimal supervision. Could you handle that?
- What kinds of problems do you like to handle? Can you give me an example?
- What kinds of problems are you good at solving? Give me one example.
- How would your weaknesses interfere with your ability to do this job?
- Would you rather create/ design a program or be responsible for implementing a program? Why?
- Knowing what you know now, is there something you would do differently in the management of one of your fieldwork cases?
- What do you judge to be your major successes or accomplishments in your fieldwork? How did you achieve these?
- What major disappointments/failures have you had in fieldwork?
- Are you prepared to make home visits?
- How is your previous experience applicable to the work we do here?

For more information, contact:
DSU Career Services
Union 300 - 662-846-4646
careerservices@deltastate.edu