

# 2005-2006 FACTBOOK



Delta State University

Office Of Institutional Research And Planning

HIGHWAY 8 • CLEVELAND, MS 38733 • 1.800.GO.TO.DSU • [WWW.DELTASTATE.EDU](http://WWW.DELTASTATE.EDU)

## PREFACE

The Delta State University *Factbook* is an annual publication that provides a ready source of information to answer questions frequently asked about the University. This edition contains a statistical overview of operations for the 2005-06 academic year. Included is information, both past and present, concerning enrollment, student characteristics, faculty characteristics, revenue, and expenditures. Its primary purpose is to promote understanding for those seeking information about Delta State University.

Most of the information in this edition was obtained from statistical reports published by the Board of Trustees of State Institutions of Higher Learning, State of Mississippi. The data submitted to the Board of Trustees for this report represents not only the work of the Office of Institutional Research & Planning but also of various administrative offices such as Registrar, Admissions, Human Resources, Academic Affairs, Financial Assistance, Student Affairs, Office of Information and Technology, Athletics, University Relations, Alumni Affairs, and the Library. Without their continued assistance and cooperation, this publication would not be possible. We extend to them our sincere appreciation.

The Office of Institutional Research and Planning, in its on-going effort to provide timely management information, encourages your comments and suggestions for improvement. We hope you find this edition of the *Factbook* both informative and useful.

Office of Institutional Research and Planning  
Kent Wyatt Hall 247  
Delta State University  
Cleveland, MS 38733

Callie Towles  
*Factbook* Editor

---

## TABLE OF CONTENTS

---

Preface .....	iii
---------------	-----

### **I. GENERAL INFORMATION**

Administrative Cabinet & Board of Trustees .....	2
Organizational Chart .....	3
University History .....	4
Institutional Mission .....	5
University Guiding Principles .....	6
University Characteristics .....	8

### **II. STUDENTS**

#### **New Students**

Applications, Admissions, and Enrollments: Fall 2005 .....	2
ACT Data for Entering Freshmen: 2005-06 .....	3
ACT Scores of First-Time Entering Freshmen: Fall 2005 .....	4
Major Feeder High Schools For ACT Tested Freshmen: 2005-06 .....	5

#### **Enrollment**

Enrollment Summary by Semester: 2005-06 .....	2
Enrollment Summary by Race .....	3
Age Distribution of Students .....	4
Enrollment of MS Institutions by Level .....	5
Enrollment of MS Institutions by Headcount and FTE .....	6
Enrollment Overview: 2-Year Comparison .....	7
College of Arts and Sciences: 3-Year Profile .....	8
College of Business: 3-Year Profile .....	9
College of Education: 3-Year Profile .....	10
School of Nursing: 3-Year Profile .....	11
Unclassified Major: 3-Year Profile .....	12
Enrollment Profile: 5-Year Trend .....	13
Enrollment by Headcount: 10-Year Trend (Graph) .....	14
Enrollment by Class .....	15
Enrollment by Gender .....	16
Enrollment by Race .....	17
Enrollment by Residency .....	18
Enrollment by Status .....	19
Enrollment by Level .....	20
Enrollment by School .....	21
Enrollment: Actual and Projected .....	22

## **Housing & Residency**

Comparative Room Report: 5-Year Trend .....	2
Enrollment of Students by Counties: 5-Year Trend .....	3
Enrollment of Students by Counties: Fall 2005 (Map) .....	6
Enrollment of Students by States and Countries: 5-Year Trend .....	7
Enrollment of Students by States: Fall 2005 (Map) .....	10

## **Majors**

Undergraduate Majors by Gender and Minority Status .....	2
Graduate Majors by Gender and Minority Status .....	4

## **Retention**

Retention of First-Time Entering Freshmen: by ACT Score Category .....	2
Retention of First-Time Entering Freshmen: All Students .....	3
Retention of First-Time Entering Freshmen: White Students .....	4
Retention of First-Time Entering Freshmen: Black Students .....	5

## **Credit Hours**

On- and Off-Campus Student Credit Hours Summary by Semester: 2005-06 .....	2
On-Campus Student Credit Hours Summary by Semester: 2005-06 .....	3
Off-Campus Student Credit Hours Summary by Semester: 2005-06 .....	4
On-Campus Student Credit Hours Summary by Level: Fall 2005 .....	5
On-Campus Student Credit Hours Summary by Discipline and Level: Fall 2005 ..	6
On-Campus Student Credit Hours Summary by Level: 2-Year Comparison .....	8
On-Campus Student Credit Hours Summary by College/School And Department: 5-Year Trend .....	9

## **Grades**

Average of Grades Awarded by Discipline .....	2
Average of Grades Awarded by Course Type: Arts & Sciences .....	4
Average of Grades Awarded by Course Type: Business .....	5
Average of Grades Awarded by Course Type: Education .....	6

## **Miscellaneous**

Intercollegiate Athletics: 2005-06 .....	2
Financial Aid Summary: 2005-06 .....	3

## **III. DEGREES GRANTED**

Degrees Offered: 2005-06 .....	2
Academic Program Inventory: 2005-06 .....	3
Degrees Awarded by Type of Degree: 5-Year Trend .....	5
Degrees Conferred by CIP Category: 5-Year Trend .....	6
Degrees Awarded by College/School and Department: 5-Year Trend .....	7
Degrees Awarded by Undergraduate Majors: 2005-06 .....	10
Degrees Awarded by Undergraduate Majors: December 2005 .....	11

## **Degrees Granted (continued)**

Degrees Awarded by Undergraduate Majors : May 2006 .....	12
Degrees Awarded by Graduate Majors: 2005-06 .....	13
Degrees Awarded by Graduate Majors: December 2005 .....	14
Degrees Awarded by Graduate Majors: May 2006 .....	15
Graduation with Honors: 5-Year Trend .....	16
Graduation with Honors: December 2005 .....	17
Graduation with Honors: May 2006 .....	18

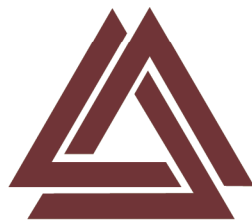
## **IV. FACULTY AND STAFF**

Faculty Profile: University Totals - Fall 2005 .....	2
College of Arts and Sciences .....	3
College of Business .....	4
College of Education .....	5
School of Nursing .....	6
Pupil-Teacher Ratio .....	7
Faculty Characteristics: 10-Year Trend .....	8
Mean Salaries of Faculty by Rank .....	9
Distribution of Employees (Graph) .....	10

## **V. RESOURCES**

Tuition and Fees: 2005-06 .....	2
Tuition and Fees: 10-Year Trend (Graph) .....	3
Instruction vs. Total E&G: 5-Year Trend .....	4
Cost Per Student vs. Tuition and Appropriation: 5-Year Trend .....	5
Current Funds Revenues by Source: 5-Year Profile .....	6
Current Funds Expenditures by Function: 5-Year Profile .....	7
Roberts-LaForge Library Holdings and Circulation .....	8

# General Information



Delta State University

---

DELTA STATE UNIVERSITY  
Administrative Cabinet  
2005-06

---

Dr. John Hilpert President	Dr. Michelle Roberts Executive Assistant to the President
Ms. Debra Allen Faculty Senate Chair	Dr. Myrtis Tabb Senior Administrator for Special Projects
Mr. Keith Fulcher Executive Director of Alumni-Foundation	Dr. Brad Teague Athletic Director
Mr. Billy Moore Academic Council Representative	Dr. John Thornell Provost and Vice President for Academic Affairs
Mr. Billy Morehead Vice President for Finance	

---

INSTITUTIONS OF HIGHER LEARNING  
Board of Trustees  
2005-06

---

Ms. Virginia Shanteau Newton President, Gulfport	Dr. Bettye H. Neely Grenada
Dr. D. E. Magee, Jr. Vice President, Jackson	Mr. Bob Owens Jackson
Mr. H. Ed Blakeslee Gulfport	Mr. Aubrey Patterson Tupelo
Mr. Thomas W. Colbert Flowood	Ms. Robin J. Robinson Laurel
Dr. L. Stacy Davidson, Jr. Cleveland	Mr. Scott Ross West Point
Mr. Roy Estess Carriere	Ms. Amy Whitten Oxford

Dr. Thomas Meredith, Commissioner of Higher Education  
3825 Ridgewood Road  
Jackson, MS 39211-6453  
(601) 432-6623 [phone]  
(601) 432-6972 [fax]

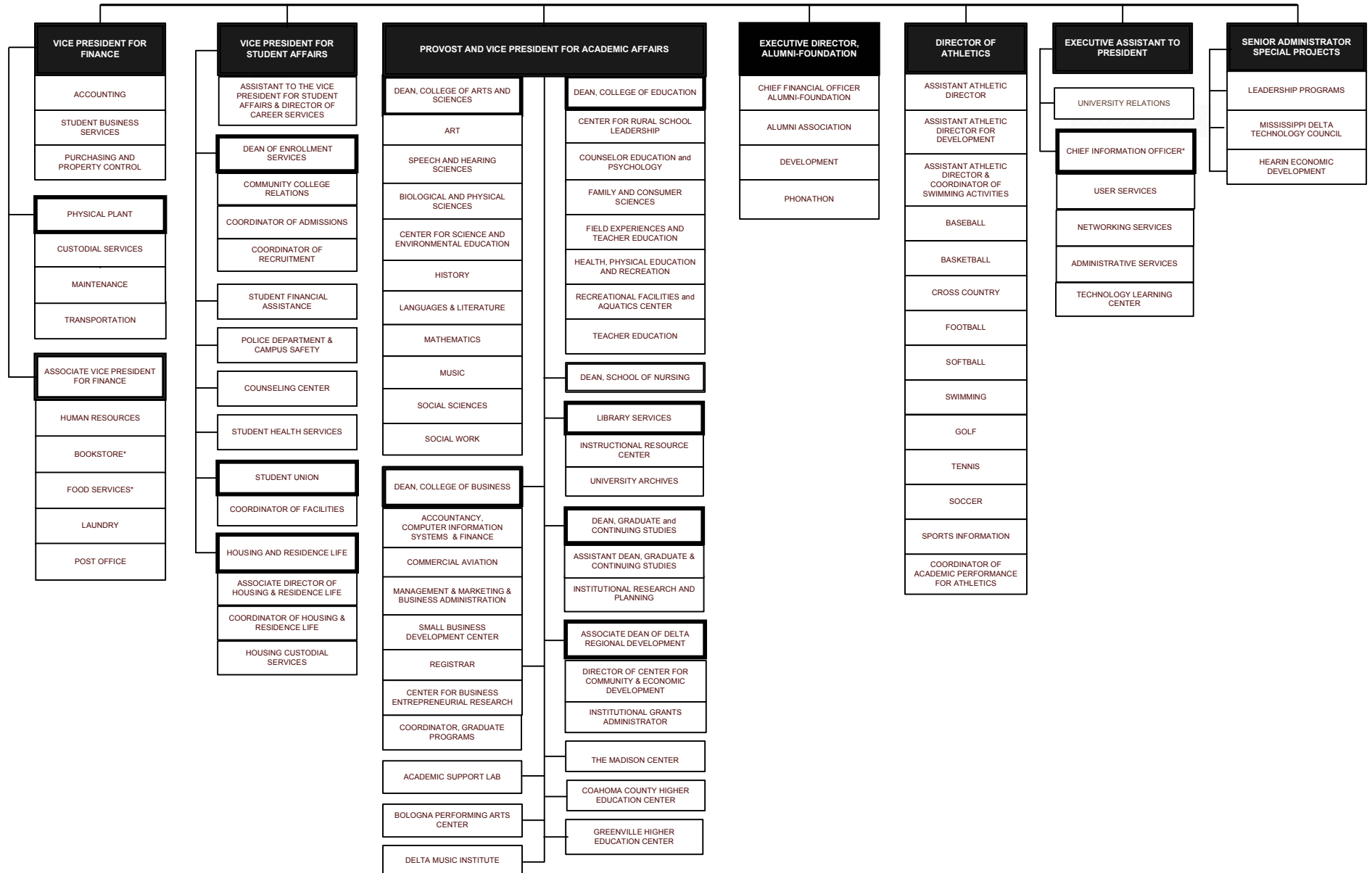
# DELTA STATE UNIVERSITY

## ADMINISTRATIVE AND ACADEMIC ORGANIZATION

### JULY 2005

**BOARD OF TRUSTEES**  
Institutions of Higher Learning

**PRESIDENT**





# **DELTA STATE UNIVERSITY**

## ***HISTORICAL SKETCH***

Delta State University was created as Delta State Teachers College by Senate Bill Number 263, Chapter 284, entitled An Act to Create and Establish the Delta State Teachers College. Governor Henry L. Whitfield signed the bill on April 9, 1924. Cleveland and Bolivar County provided the College's first physical facilities in the form of three buildings that formerly housed the Bolivar County Agricultural High School. The institution opened for its first regular session on September 15, 1925, with a faculty and staff of eleven and a student body of ninety-seven.

The College's first president, Mr. James Wesley Broom, died during Delta State's first session. He was succeeded by Dr. W. M. Kethley, who served as president from 1926 to 1956. Dr. James M. Ewing became the third president on September 1, 1956, and served until his retirement on July 31, 1971. Dr. Aubrey K. Lucas served as the institution's fourth president from August 1, 1971, until June 30, 1975. On July 1, 1975, Dr. Forest Kent Wyatt became the fifth president, and he served until his retirement on June 30, 1999. He was succeeded by Dr. David L. Potter on July 1, 1999, and he served until January 31, 2003. Dr. John G. Thornell served as Interim President from February 1, 2003 until August 31, 2003. On September 1, 2003, Dr. John M. Hilpert became DSU's seventh president.

The growth and expanding mission of the institution were evidenced by its name change in 1955 to Delta State College. In 1969 Delta State was authorized to reorganize its academic structure into four schools. The School of Arts and Sciences and the School of Business were activated in 1969 and the School of Education and School of Graduate Studies were implemented in 1970. A School of Nursing was authorized in 1977 and began operation in 1978. On March 15, 1974, the institution was officially designated Delta State University to reflect its continued growth and expanded scope.

When created in 1925, Delta State was authorized to offer only the Bachelor of Science degree in Education. The first such degrees were conferred in June 1928. Undergraduate degrees are now offered in the arts, sciences, humanities, business, nursing, commercial aviation and education.

In 1965, the University initiated a graduate program and the first Master of Education degrees were conferred in May, 1966. Delta State University now offers Master's degrees in the areas of business, commercial aviation, education, natural and social sciences, and nursing, as well as the Educational Specialist degree and Doctor of Education in professional studies.

From a small teacher-training institution in the 1920's, Delta State has grown into a multi-purpose university which focuses strongly on quality classroom instruction. Enrollment has increased to more than 4,000 students, and corresponding growth has occurred in physical facilities. The growth and success of the University are tributes to the dedication of the faculty and staff, the hard work of the students, and the strong support of the Delta community and state legislature.

# **Delta State University**

## **Vision**

Students at Delta State University will learn and grow in an environment that fosters discovery and creativity. The institution intends to be the best regional university in America as it combines a heritage of academic strength with a robust commitment to serving people and communities, particularly in the Mississippi Delta.

## **Institutional Mission**

As a regional Carnegie Master's I university located in Cleveland, Mississippi, Delta State University serves as an educational and cultural center of the Mississippi Delta, emphasizing service to the Northern Delta Counties and its campus centers in Clarksdale and Greenville. The University offers undergraduate, graduate, and continuing education programs of study leading to baccalaureate and master's degrees in the Colleges of Arts and Sciences, Business, Education, and the School of Nursing, as well as a Doctorate in Education. Emphasis is placed on excellence in instruction, followed by service and research, in the creation of a community of scholars. With special attention to small classes, a friendly environment, and a broad liberal arts foundation, the University encourages significant student-faculty interactions. Delta State provides programs and services which promote intellectual, cultural, ethical, physical, and social development. Students from different cultural, socioeconomic, and ethnic backgrounds will develop the ability to respect and evaluate the thoughts of others; to develop, assess, and express their own thoughts effectively; and to use the techniques of research and performance associated with their disciplines.

*Approved by the Board of Trustees of State Institutions of Higher Learning, March 18, 2004.*

## **GUIDING PRINCIPLES**

### **COMMITMENT TO QUALITY IN ACADEMIC PROGRAMS**

Acknowledging its beginnings as a teacher's college, the University sustains excellence in teacher education while also continuing to expand offerings in traditional as well as new areas of study. From the core disciplines such as arts, humanities, and sciences to unique programs such as commercial aviation and community development, the University is committed to meeting the ever-changing and evolving needs of the students it serves. It sustains quality in those programs by maintaining accreditation of all programs for which an accrediting agency exists.

### **COMMITMENT TO LEARNING, SCHOLARSHIP & STUDENT ENGAGEMENT**

Delta State provides programs that cultivate intellectual curiosity and promote scholarship among its students. Through a state-of-the-art library supplemented by a campus network of computer labs, students have access to a full range of information resources in support of learning. The University also acknowledges the importance of student engagement as central to successful learning. Toward that end the University has dedicated its quality enhancement plan as required for regional accreditation to increased student engagement. In support of community engagement and service-learning experiences for students, the University has created an office and a faculty role to sustain those efforts.

### **SUPPORT FOR THE ARTS**

Delta State recognizes the need for a vibrant creative and performing arts program for its students and the region. The renovation of Jobe Hall provides a state-of-the-art theatre facility for student productions. Through the Bologna Performing Arts Center, the Delta Music Institute, the Janice Wyatt Summer Arts Institute, and a partnership with the Delta Arts Alliance, the University ensures the preservation and enhancement of the arts throughout the region.

### **ENCOURAGEMENT OF INNOVATION & EXPERIMENTATION**

Delta State endorses the principles of innovation and experimentation, and makes them a part of its institutional culture. The University acknowledges the importance of an environment where students and faculty can undertake risks and experiment with new ideas.

### **RESPECT FOR PEOPLE & IDEAS**

Delta State promotes mutual respect, teamwork, fairness, and integrity. The University is diligent in working to create a climate where students, employees, and constituents are valued and nurtured. Through an ongoing re-engineering project the University converts these principles into action.

### **COMMITMENT TO A STUDENT- CENTERED CAMPUS**

Delta State promotes a campus culture that fosters student development. From an array of student services to a nationally recognized athletic program, the University is dedicated to ensuring that the full range of student needs and interests are met.

### COMMITMENT TO INSTITUTIONAL EFFECTIVENESS

Delta State acknowledges its role as a public institution funded largely by the citizens of Mississippi. In recognition of that public trust, the University is committed to high standards of excellence with appropriate emphasis on effectiveness and productivity.

### COMMITMENT TO REGIONAL & ECONOMIC DEVELOPMENT

Delta State, in partnership with various organizations, will advance community and economic development in the Delta region to improve the quality of life and raise the educational level of its citizens. Special attention is given to collaboration with our educational partners: Mississippi Valley State University, Coahoma Community College, Mississippi Delta Community College, the Mississippi Department of Education, and the K-12 schools of the Delta. Moreover, the Delta Center for Culture and Learning, the Capps Archives, the Center for Business Research, and the Center for Community and Economic Development provide a structure to ensure University participation in promoting and celebrating the unique heritage of the Delta while also addressing the longstanding social, economic, and cultural challenges that inhibit advancement.

### COMMITMENT TO LEADERSHIP

Delta State is actively involved in providing programs that train leaders for the twenty-first century. Through partnerships with the Kellogg Foundation, Delta Council, the Delta Regional Authority, and other Delta organizations committed to advancement in the region, the University is confident it can make a difference in the quality and training of the leaders who will serve on behalf of future generations.

### COMMITMENT TO TEACHING & FACULTY DEVELOPMENT

The quality of Delta State's academic programs is central to its educational mission. That quality is affirmed through a dedicated faculty with credentials appropriate to their discipline. The University supports high standards of quality among its faculty and maintains those standards through the Technology Learning Center, a modern faculty development office dedicated to the application of technology to teaching, and through the Kent and Janice Wyatt Faculty Development Program, a University Foundation initiative that provides resources for faculty growth.

### COMMITMENT TO HEALTH

Delta State acknowledges the importance of physical health for its students and the region and extends its resources in support of that goal. Through undergraduate and graduate programs in nursing and pre-professional programs in the sciences, the University provides health care practitioners to serve the State. The University works as the leading partner in the Delta Health Alliance, a collaborative effort with other Delta stakeholders that conducts research and provides education on the health care needs of the region.

*Approved by the Board of Trustees of State Institutions of Higher Learning, March 18, 2004.*

---

## UNIVERSITY CHARACTERISTICS

---

### Location

Delta State University is located in Cleveland, Mississippi, in the heart of the Mississippi Delta. The campus consists of 331.54 acres of land within or adjoining the western corporate limits. Cleveland is considered a rural city with a population of 13,841 and is situated in Bolivar County, which has a population of 40,633. The nearest urban city is 110 miles north in Memphis, TN. The nearest international airport is also located in Memphis. Regional airport facilities are located in Greenville, MS which is 40 miles southwest of Cleveland, and the nearest municipal airport is located within Cleveland's city limits.

### Academic Year

The University operates on the semester system with the fall semester beginning in late August and ending before Christmas. The spring semester begins in January and ends in May. There are two five-week summer sessions.

### Enrollment

The total on-campus enrollment for Fall 2005 was 3,998. The total off-campus enrollment for Fall 2005 was 286: 149 in Greenville, 137 in other locations. Students came from 30 states and 7 foreign countries.

### Student Fees

Tuition and fees for Mississippi residents are \$1,881 and for non-residents \$4,357 per semester. Room and Board fees are \$1,974 per semester.

### Student Characteristics

Average age of Freshmen - 18

Average age of Undergraduates - 25

FTE Student/Faculty ratio - 16 to 1

### Housing

The University has 11 residence halls with a capacity of 1347. There are eight national fraternities and six national sororities. Approximately 16% of the undergraduate men are members of a fraternity and 16% of the women are members of a sorority.

### Athletics

The University is a member of the National Collegiate Athletic Association (NCAA) at the Division II level.

### Accreditation

Delta State University is accredited by the Commission on Colleges of the Southern Association of Colleges and Schools to award bachelors, masters, specialists and doctoral degrees.

### Degrees

The University offers 16 Bachelor's degrees, eight Master's degrees, one Specialist degree and one Doctoral degree. In 2005-06, DSU awarded 559 bachelor's degrees, 187 master's, 19 specialist's, and 3 doctoral.

### Faculty

DSU employed 261 faculty in the Fall 2005 of which 141 were full-time and 120 part-time. Fifty-three percent held Doctoral degrees.

### Library

The Roberts-LaForge Library collections consist of 360,286 bound volumes and U.S. government documents combined, 831,610 microforms, and 1,258 subscriptions.

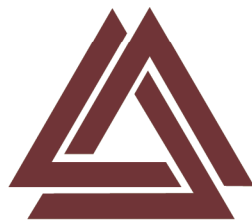
### Fine Arts

The Fielding Wright Art Center houses the art department and contains three galleries for hanging exhibitions. The Holcombe-Norwood addition to the art center was opened in Fall, 1994 and the Bologna Performing Arts Center was completed in Spring, 1995.

### Computer Labs

Union	21 microcomputers
Ewing Hall	24 microcomputers
Walters Hall	44 microcomputers
Nursing	13 microcomputers
Broom Hall	88 microcomputers
Library	56 microcomputers
Music	12 microcomputers
Art	36 microcomputers

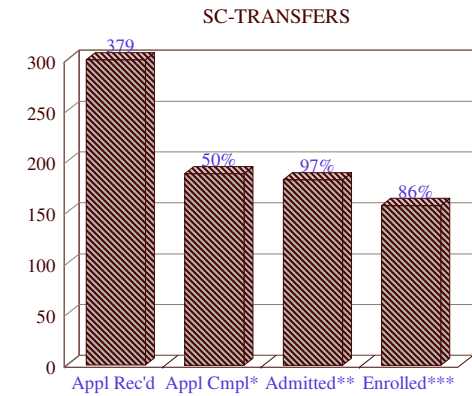
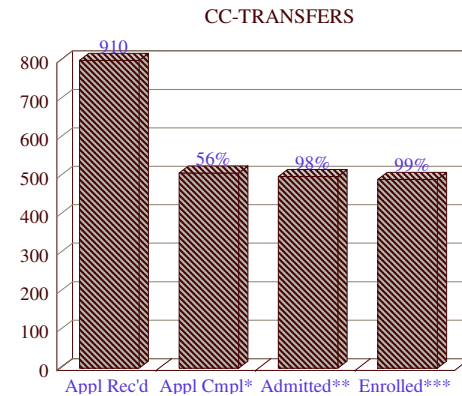
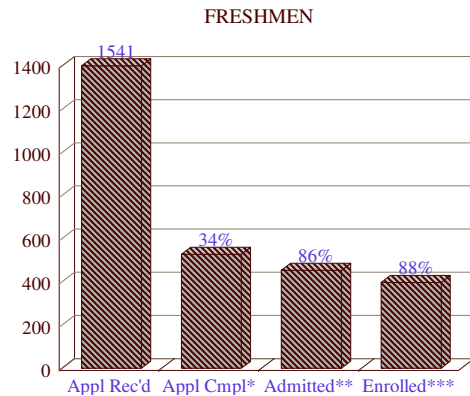
# New Students



Delta State University

**DELTA STATE UNIVERSITY**  
**NEW STUDENT APPLICATIONS, ADMISSIONS, AND ENROLLMENTS**  
**FALL 2005**

	Number of Applications Received						Number of Completed Applications						Number Admitted						Number Enrolled					
	Freshman		CC-Transfer		SC-Transfer		Freshman		CC-Transfer		SC-Transfer		Freshman		CC-Transfer		SC-Transfer		Freshman		CC-Transfer		SC-Transfer	
	#	%	#	%	#	%	#	%	#	%	#	%	#	%	#	%	#	%	#	%	#	%	#	%
In-State	1237	80%	886	97%	327	86%	449	85%	495	98%	171	91%	387	85%	480	96%	165	91%	332	83%	475	97%	137	87%
Out-of-State	304	20%	24	3%	52	14%	79	15%	12	2%	17	9%	67	15%	18	4%	17	9%	66	17%	16	3%	20	13%
Male	621	40%	321	35%	116	31%	233	44%	207	41%	64	34%	195	43%	202	41%	64	35%	173	43%	192	39%	49	31%
Female	920	60%	589	65%	263	69%	295	56%	300	59%	124	66%	259	57%	296	59%	118	65%	225	57%	299	61%	108	69%
White	682	44%	425	47%	107	28%	286	54%	286	56%	65	35%	275	61%	288	58%	63	35%	242	61%	290	59%	46	29%
Black	798	52%	452	50%	255	67%	230	44%	203	40%	117	62%	170	37%	193	39%	113	62%	147	37%	193	39%	106	68%
Other	61	4%	33	4%	17	4%	12	2%	18	4%	6	3%	9	2%	17	3%	6	3%	9	2%	8	2%	5	3%
<b>TOTAL</b>	<b>1541</b>	<b>100.0%</b>	<b>910</b>	<b>100.0%</b>	<b>379</b>	<b>100.0%</b>	<b>528</b>	<b>100.0%</b>	<b>507</b>	<b>100.0%</b>	<b>188</b>	<b>100.0%</b>	<b>454</b>	<b>100.0%</b>	<b>498</b>	<b>100.0%</b>	<b>182</b>	<b>100.0%</b>	<b>398</b>	<b>100.0%</b>	<b>491</b>	<b>100.0%</b>	<b>157</b>	<b>100.0%</b>



Source: Office of Admissions  
Office of Institutional Research and Planning  
Date : September 2006

\* The number of applicants completing the process for admission consideration  
\*\* The number of applicants admitted is reported as a % of the completed applications  
\*\*\* The number of applicants enrolled is reported as a % of the number of applicants admitted

# DELTA STATE UNIVERSITY ACT DATA FOR ENTERING FRESHMEN 2005-06

Reference Score Values	ACT Scores					
	English	Math	Reading	Science Reasoning	Composite	
Seventy-fifth percentile	23.2	20.1	23.3	21.9	22.0	
Median	19.8	17.2	19.4	19.4	18.9	
Twenty-fifth percentile	17.0	15.7	16.2	17.4	16.9	
Overall mean	20.3	18.3	20.0	19.7	19.7	
Standard deviation	4.8	3.6	5.0	3.6	3.6	
<b>College Freshmen Trends</b>	<b>2001</b>	<b>2002</b>	<b>2003</b>	<b>2004</b>	<b>2005</b>	<b>Nat'l Avg.</b>
<b><i>ACT Composite Score</i></b>						
English	20.7	20.4	20.6	20.5	20.3	21.3
Mathematics	18.7	18.4	18.6	18.7	18.3	21.4
Reading	20.6	20.2	19.9	20.5	20	22.2
Science Reasoning	19.8	19.6	19.8	19.8	19.7	21.5
Composite	20.1	19.8	19.9	20.0	19.7	21.7
<b><i>High School Grades</i></b>						
English	3.17	3.21	3.25	3.20	3.2	3.35
Mathematics	3.05	2.97	3.09	3.04	3.1	3.17
Social Studies	3.38	3.32	3.44	3.40	3.37	3.28
Natural Sciences	3.21	3.14	3.22	3.12	3.18	3.43
Average of grades	3.22	3.17	3.26	3.20	3.21	3.31
ACT Standard Score						

Source: ACT Class Profile Service Report  
Date : April 2006



**DELTA STATE UNIVERSITY**  
**ACT SCORES OF FIRST-TIME ENTERING FRESHMEN**  
**FALL 2005**

Score	English	Math	Reading	Science Reasoning	Composite	Old ACT	SAT Conv.	Total
36	0	0	1	0	0	0	0	0
35	1	0	2	0	0	0	0	0
34	0	0	1	0	0	0	0	0
33	2	0	2	2	0	0	0	0
32	5	0	3	1	1	0	0	1
31	8	0	3	2	1	0	0	1
30	3	1	8	1	1	1	0	2
29	10	3	7	2	5	0	1	6
28	4	1	13	3	9	0	0	9
27	9	5	17	9	11	1	0	12
26	16	11	4	6	4	1	0	5
25	14	10	13	14	10	0	4	14
24	18	19	19	15	16	1	2	19
23	18	16	33	25	25	2	1	28
22	29	20	24	39	24	4	7	35
21	30	14	19	35	27	2	3	32
20	37	19	38	44	33	2	3	38
19	35	30	24	53	40	4	0	44
18	25	35	26	42	45	4	0	49
17	23	67	21	21	44	3	0	47
16	19	42	30	16	40	5	0	45
15	18	37	19	5	5	0	0	5
14	10	9	11	3	2	0	0	2
13	4	5	3	4	1	0	0	1
12	3	0	2	1	0	0	0	0
11	1	0	1	0	0	0	0	0
10	1	0	0	0	0	0	0	0
9	1	0	0	1	0	0	0	0
8	0	0	0	0	0	0	0	0
7	-	-	-	-	-	-	-	-
6	-	-	-	-	-	-	-	-
5	-	-	-	-	-	-	-	-
4	-	-	-	-	-	-	-	-
3	-	-	-	-	-	-	-	-
2	-	-	-	-	-	-	-	-
1	-	-	-	-	-	-	-	-
STUDENTS	344	344	344	344	344	30	21	395
MEAN	20.936	18.927	21.122	20.509	20.142	20.067	22.714	20.273

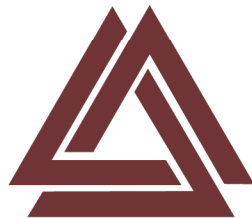
Source: IHL Statistical Reports  
Date : May 2006

**DELTA STATE UNIVERSITY**  
**MAJOR FEEDER HIGH SCHOOLS FOR ACT TESTED FRESHMEN**  
**FRESHMAN CLASS: 2005-06**

HIGH SCHOOL	LOCATION	ENROLLED	
		NUMBER	AVG. ACT
Cleveland High School	Cleveland, MS	35	21.3
Bayou Academy	Cleveland, MS	13	21.2
Southaven High School	Southaven, MS	9	21.6
Lee Academy	Clarksdale, MS	8	18.3
South Delta High School	Rolling Fork, MS	8	17.5
Washington School	Greenville, MS	7	21.9
Clarksdale High School	Clarksdale, MS	6	18.8
Norma C Obannon School	Greenville, MS	6	17.7
Olive Branch High School	Olive Branch, Ms	6	22.2
Pillow Academy	Greenwood,MS	5	21.0
Grenada High School	Grenada,MS	5	21.4
Gentry High School	Indianola, MS	5	17.2
Leland High School	Leland,MS	5	17.8
Oxford High School	Oxford, MS	5	21.4
Deer Creek school	Arcola, MS	4	23.0
Humphreys County High School	Belzoni, MS	4	16.8
East Side High School	Cleveland, MS	4	17.5
Greenville-Weston HS-GHS	Greenville, MS	4	19.3
Greenville-Weston HS-WHS	Greenville, MS	4	16.3
Hernando High School	Hernando, MS	4	18.0
Madison Central High School	Madison, MS	4	22.5
De Soto School	West Helena, AR	3	—.-
North Delta school	Batesville, MS	3	—.-
Drew High School	Drew, MS	3	—.-
St Josephs High School	Greenville, MS	3	—.-
Independence High School	Independence, MS	3	—.-
Lafayette High School	Oxford, MS	3	—.-
West Bolivar District High SC	Rosedale, MS	3	—.-
Broad Street High School	Shelby, MS	3	—.-
Manchester Academy	Yazoo City, MS	3	—.-

Source: ACT Class Profile Report  
Date : April 2005

# Enrollment



Delta State University

**DELTA STATE UNIVERSITY**  
**ON-CAMPUS ENROLLMENT SUMMARY BY SEMESTER**  
**2005-06**

	SUMMER 2005		FALL 2006		SPRING 2006	
	#	%	#	%	#	%
<b>STATUS-HEADCOUNT</b>						
Full-Time	*	*	3000	75.6%	2729	73.5%
Part-time	*	*	998	24.4%	1007	26.5%
<b>STATUS-FTE</b>						
Full-time	*	*	2937	89.5%	2663	88.3%
Part-time	*	*	368	10.5%	353	11.7%
<b>RACE</b>						
White	894	52.5%	2277	58.9%	2147	58.0%
Black	694	46.0%	1654	39.9%	1529	40.4%
Other	22	1.5%	67	1.2%	60	1.6%
<b>GENDER</b>						
Female	1121	69.8%	2485	62.3%	2366	63.0%
Male	489	30.2%	1513	37.7%	1370	37.0%
<b>LEVEL</b>						
Lower	294	18.4%	1399	34.4%	1171	31.7%
Upper	761	48.8%	1859	47.3%	1810	48.2%
Graduate	555	32.8%	740	18.3%	755	20.2%
<b>RESIDENCY</b>						
Resident of MS	1524	94.5%	3625	90.2%	3384	90.2%
Non-resident of MS	86	5.5%	373	9.8%	352	9.8%
<b>SCHOOL</b>						
Arts & Sciences	313	20.0%	916	23.5%	848	23.0%
Business	279	22.3%	904	23.3%	812	22.4%
Education	610	34.9%	1350	33.6%	1271	34.3%
Nursing	75	3.3%	256	5.9%	252	6.4%
Undeclared	333	19.5%	572	13.8%	553	14.0%
<b>TOTAL-HEADCOUNT</b>	1610	100.0%	3998	100.0%	3736	100.0%
<b>TOTAL-FTE</b>	742	100.0%	3305	100.0%	3016	100.0%

Source: Institutional Research and Planning  
Date : March 2006

\*Full-time and part-time status is  
not defined for the summer term.

**DELTA STATE UNIVERSITY**  
**ON- and OFF-CAMPUS ENROLLMENT SUMMARY OF STUDENTS BY RACE**  
**FALL 2005**

	White		Black		Other		TOTAL	
	#	%	#	%	#	%	#	%
Male	1,092	69%	460	29%	37	2%	1,589	37%
Female	1,319	49%	1,344	50%	32	1%	2,695	63%
First-Time Freshmen	242	61%	147	37%	9	2%	398	9%
Returning Students	1,237	60%	786	38%	35	2%	2,058	48%
Readmitted Students	101	51%	94	48%	2	1%	197	5%
Transfer Students	336	52%	299	46%	12	2%	647	15%
Returning Graduate Students	351	49%	358	50%	8	1%	717	17%
Transient	6	46%	6	46%	1	8%	13	0%
High School Students	34	94%	1	3%	1	3%	36	1%
Non-Formula Students (over "21")	11	44%	14	56%	0	0%	25	1%
First-Time Graduate Students	93	48%	99	51%	1	1%	193	5%
Full-time	1,762	58%	1,237	41%	51	2%	3,050	71%
Part-time	649	53%	567	46%	18	1%	1,234	29%
In-State	2,137	55%	1,708	44%	56	1%	3,901	91%
Out-of-State	274	72%	96	25%	13	3%	383	9%
<u>Graduates - 2005-06</u>								
Bachelor	348	62%	205	37%	6	1%	559	73%
Master	98	52%	88	47%	1	1%	187	24%
Educational Specialist	6	32%	13	68%	0	0%	19	2%
Doctoral	2	67%	1	33%	0	0%	3	0%
Total	454	59%	307	40%	7	1%	768	100%
GRAND TOTAL	2,411	56%	1,804	42%	69	2%	4,284	100%

Source: IHL Statistical Report  
Date : January 2006

**DELTA STATE UNIVERSITY**  
**AGE DISTRIBUTION OF STUDENTS\***  
**FALL 2005**

	FULL-TIME						PART-TIME						UNIVERSITY			
	UNDERGRADUATE			GRADUATE			UNDERGRADUATE			GRADUATE						
AGE	Men	Women	Total	Men	Women	Total	Men	Women	Total	Men	Women	Total	Men	Women	Total	%
Under 18	1	2	3	0	0	0	12	14	26	0	0	0	13	16	29	0.7%
18-19	274	392	666	0	0	0	6	10	16	0	0	0	280	402	682	15.9%
20-21	385	564	949	1	1	2	12	23	35	1	1	2	399	590	989	23.1%
22-24	356	370	726	36	59	93	52	76	128	30	69	99	474	572	1046	24.4%
25-29	97	127	224	20	35	63	33	60	93	34	100	134	184	330	514	12.0%
30-34	21	53	74	7	21	44	16	74	90	32	73	105	76	237	313	7.3%
35 - 39	10	45	55	7	13	23	11	33	44	20	52	72	48	146	194	4.5%
40 - 49	12	45	57	8	23	42	13	71	84	31	87	118	64	237	301	7.0%
50 - 64	4	11	15	3	12	13	13	45	58	13	25	38	33	91	124	2.9%
65 and over	0	0	0	0	0	0	17	75	92	0	0	0	17	75	92	2.1%
Unknown	0	0	0	0	0	0	0	0	0	0	0	0	0	0	0	0.0%
TOTAL	1160	1609	2769	82	198	280	185	481	666	161	407	568	1588	2696	4284	100.0%

Source: Institutional Research and Planning

Date : January 2006

\* On- and off-campus enrollment of undergraduates and graduates

**DELTA STATE UNIVERSITY**  
**ON-CAMPUS ENROLLMENT OF MS INSTITUTIONS BY LEVEL**  
**FALL 2005**

INSTITUTION	Freshman	Sophomore	Junior	Senior	Total Undergrad.	Graduate	TOTAL
Alcorn State University	1056	621	571	714	2962	582	3544
DELTA STATE UNIVERSITY	833	546	754	1125	3258	740	3998
Jackson State University	2268	1424	1396	1572	6660	1756	8416
MS State University*	2791	2111	2636	4486	12024	3294	15318
MS University for Women	499	330	506	748	2083	170	2253
MS Valley State University	919	565	464	746	2694	360	3054
University of Mississippi*	3196	2317	2534	3347	11394	2340	13734
University of Southern MS	2290	1858	2705	4296	11149	2182	13331
<b>TOTAL</b>	<b>13852</b>	<b>9772</b>	<b>11566</b>	<b>17034</b>	<b>52224</b>	<b>11424</b>	<b>63648</b>

Source: IHL Fall 2005 Enrollment Factbook  
Date : April 2006

\*Includes Veterinary students

\*\*Excludes Medical School located in Jackson

Includes Law School, fifth-year Pharmacy, and fifth-year Engineering enrollments.

**DELTA STATE UNIVERSITY**  
**ON-CAMPUS ENROLLMENT OF MS INSTITUTIONS BY HEADCOUNT AND FULL-TIME EQUIVALENT**  
**FALL 2005**

INSTITUTION	Headcount				Full-time Equivalent				
	Full Time	Part Time	Total	Percent Part Time	Lower	Upper	Graduate	Total	F.T.E Percent of Headcount
Alcorn State University	2,815	729	3,544	20.6%	1,646	1,220	300	3,166	89.3%
Delta State University	3,000	998	3,998	25.0%	1,199	1,701	405	3,305	82.7%
Jackson State University	6,449	1,967	8,416	23.4%	3,458	2,669	1,055	7,182	85.3%
MS State University	12,404	2,914	15,318	19.0%	4,604	6,285	2,171	13,060	85.3%
MS University for Women	1,680	573	2,253	25.4%	706	1,075	124	1,905	84.6%
MS Valley State University	2,200	854	3,054	28.0%	1,301	1,007	168	2,476	81.1%
University of Mississippi	12,280	1,454	13,734	10.6%	5,138	5,305	2,045	12,488	90.9%
University of Southern MS	10,763	2,568	13,331	19.3%	4,032	6,187	1,510	11,729	88.0%
<b>TOTAL</b>	<b>51,591</b>	<b>12,057</b>	<b>63,648</b>	<b>18.9%</b>	<b>22,084</b>	<b>25,449</b>	<b>7,778</b>	<b>55,311</b>	<b>86.9%</b>

Source: IHL Fall 2005 Enrollment Factbook

Date : April 2006



**DELTA STATE UNIVERSITY**  
**ON-CAMPUS ENROLLMENT OVERVIEW**  
**TWO-YEAR FALL COMPARISON**

	FALL 2004		FALL 2005	
	#	%	#	%
TOTAL UNIVERSITY	3,853	100.0%	3,998	100.0%
Full-time	2,913	75.6%	3,000	75.0%
Part-time	940	24.4%	998	25.0%
FTE	3,211		3,305	
Total Undergraduate	3,148	81.7%	3,258	81.5%
Total Graduate	705	18.3%	740	18.5%
Freshmen*	848	22.0%	879	22.0%
Sophmores*	479	12.4%	520	13.0%
Juniors*	767	19.9%	760	19.0%
Seniors*	1,054	27.4%	1,099	27.5%
Masters	597	15.5%	628	15.7%
Specialists	49	1.3%	49	1.2%
Doctoral	59	1.5%	63	1.6%
First-Time Freshmen	383	9.9%	398	10.0%
Returning Students	1,950	50.6%	1,996	49.9%
Readmitted Students	128	3.3%	174	4.4%
Transfer Students	571	14.8%	593	14.8%
Returning Graduate Students	585	15.2%	646	16.2%
Transient	0	0.0%	13	0.3%
High School Students	15	0.4%	21	0.5%
Non-Formula Students ("over 21")	37	1.0%	25	0.6%
First- Time Graduate Students	184	4.8%	162	4.1%
In-State	3,475	90.2%	3,625	90.7%
Out-of State	378	9.8%	373	9.3%
Men	1,451	37.7%	1,513	37.8%
Women	2,402	62.3%	2,485	62.2%
Caucasian	2,268	58.9%	2,277	57.0%
Asian	16	0.4%	26	0.7%
Black	1,539	39.9%	1,654	41.4%
American Indian	8	0.2%	10	0.3%
Hispanic	22	0.6%	31	0.8%

Source: Institutional Research and Planning  
Date : April 2006

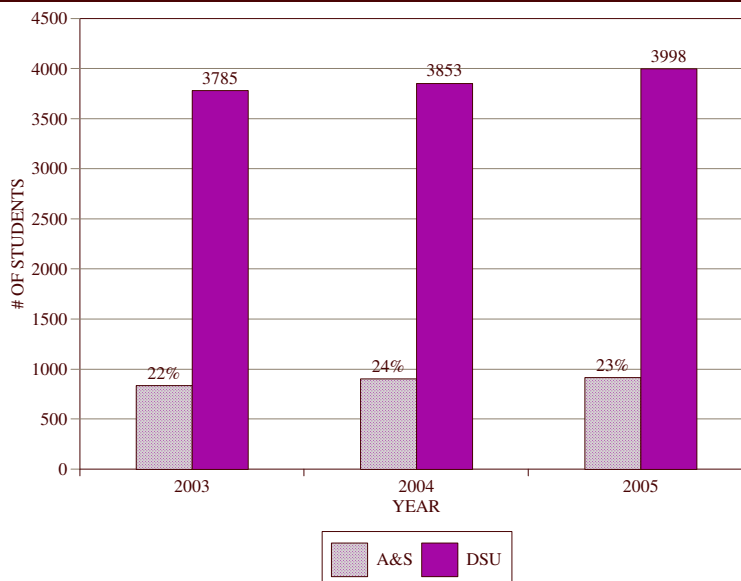
\* Classification estimated

# DELTA STATE UNIVERSITY

## 3-YEAR ENROLLMENT PROFILE

### COLLEGE OF ARTS AND SCIENCES

FALL SEMESTER	2003		2004		2005		3-YR CHANGE	
	#	%	#	%	#	%	#	%
<b>STATUS</b>								
Full-time	802	87%	814	90%	829	91%	27	3%
Part-time	122	13%	92	10%	87	9%	-35	-29%
<b>GENDER</b>								
Female	605	65%	594	66%	584	64%	-21	-3%
Male	319	35%	312	34%	332	36%	13	4%
<b>RESIDENCY</b>								
In-State	842	91%	833	92%	847	92%	5	1%
Out-of-State	82	9%	73	8%	69	8%	-13	-16%
<b>CLASSIFICATION</b>								
Freshmen*	197	21%	235	26%	243	26%	46	23%
Sophomores*	163	18%	133	15%	144	16%	-19	-12%
Juniors*	223	24%	214	24%	209	23%	-14	-6%
Seniors*	271	29%	293	32%	303	33%	32	12%
Graduates	70	8%	31	3%	17	2%	-53	-76%
<b>School Total</b>	924	24%	906	24%	916	23%	-8	-1%
<b>DSU TOTAL</b>	3785	100%	3853	100%	3998	100%	213	5.6%

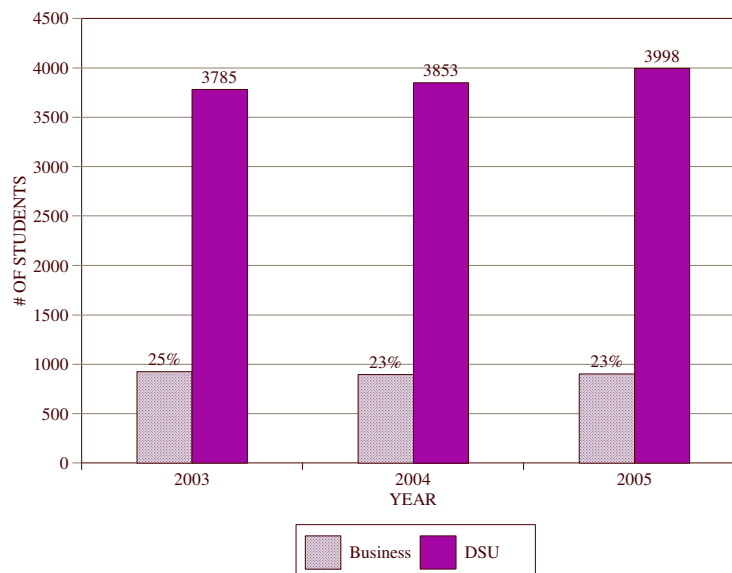


Source: IHL Statistical Report  
Date : April 2005

\* Classification estimated

# DELTA STATE UNIVERSITY 3-YEAR ENROLLMENT PROFILE COLLEGE OF BUSINESS

FALL SEMESTER	2003		2004		2005		3-YR CHANGE	
	#	%	#	%	#	%	#	%
<b>STATUS</b>								
Full-time	749	81%	739	82%	732	81%	-17	-2%
Part-time	180	19%	159	18%	172	19%	-8	-4%
<b>GENDER</b>								
Female	407	44%	359	40%	354	39%	-53	-13%
Male	522	56%	539	60%	550	61%	28	5%
<b>RESIDENCY</b>								
In-State	811	87%	782	87%	799	88%	-12	-1%
Out-of-State	118	13%	116	13%	105	12%	-13	-11%
<b>CLASSIFICATION</b>								
Freshmen*	152	16%	209	23%	217	24%	65	43%
Sophomores*	142	15%	118	13%	128	14%	-14	-10%
Juniors*	240	26%	190	21%	187	21%	-53	-22%
Seniors*	270	29%	260	29%	270	30%	0	0%
Graduates	125	13%	121	13%	102	11%	-23	-18%
<b>School Total</b>	929	25%	898	23%	904	23%	-25	-3%
<b>DSU TOTAL</b>	3785	100%	3853	100%	3998	100%	213	5.6%



Source: IHL Statistical Report  
Date : June 2006

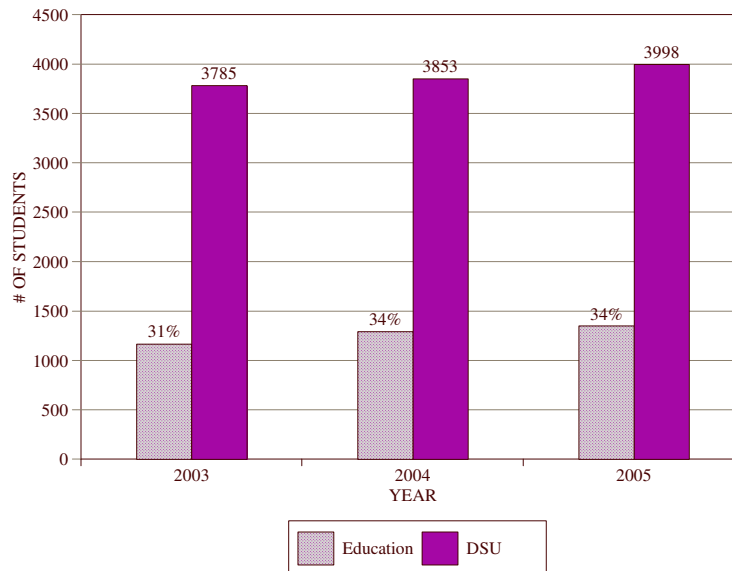
\* Classification estimated

# DELTA STATE UNIVERSITY

## 3-YEAR ENROLLMENT PROFILE

### COLLEGE OF EDUCATION

FALL SEMESTER	2003		2004		2005		3-YR CHANGE	
	#	%	#	%	#	%	#	%
<b>STATUS</b>								
Full-time	867	74%	929	72%	975	72%	108	12%
Part-time	299	26%	364	28%	375	28%	76	25%
<b>GENDER</b>								
Female	847	73%	929	72%	957	71%	110	13%
Male	319	27%	364	28%	393	29%	74	23%
<b>RESIDENCY</b>								
In-State	1058	91%	1162	90%	1227	91%	169	16%
Out-of-State	108	9%	131	10%	123	9%	15	14%
<b>CLASSIFICATION</b>								
Freshmen*	137	12%	239	18%	252	19%	115	84%
Sophomores*	118	10%	135	10%	150	11%	32	27%
Juniors*	231	20%	217	17%	218	16%	-13	-6%
Seniors*	342	29%	298	23%	315	23%	-27	-8%
Graduates	338	29%	404	31%	415	31%	77	23%
<b>School Total</b>	1166	31%	1293	34%	1350	34%	184	16%
<b>DSU TOTAL</b>	3785	100%	3853	100%	3998	100%	213	5.6%

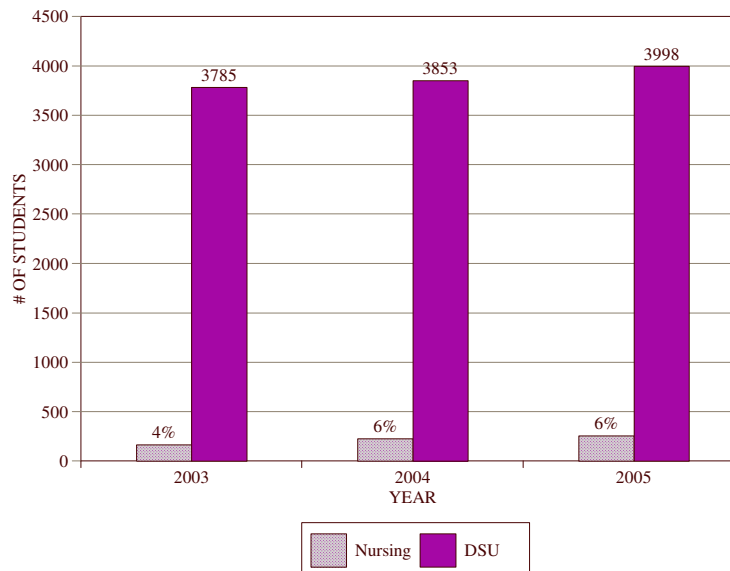


Source: IHL Statistical Report  
Date : June 2006

\* Classification estimated

# DELTA STATE UNIVERSITY 3-YEAR ENROLLMENT PROFILE SCHOOL OF NURSING

FALL SEMESTER	2003		2004		2005		3-YR CHANGE	
	#	%	#	%	#	%	#	%
<b>STATUS</b>								
Full-time	131	79%	181	80%	226	88%	95	73%
Part-time	35	21%	45	20%	30	12%	-5	-14%
<b>GENDER</b>								
Female	145	87%	198	88%	220	86%	75	52%
Male	21	13%	28	12%	36	14%	15	71%
<b>RESIDENCY</b>								
In-State	153	92%	216	96%	243	95%	90	59%
Out-of-State	13	8%	10	4%	13	5%	0	0%
<b>CLASSIFICATION</b>								
Freshmen*	51	31%	52	23%	62	24%	11	22%
Sophomores*	18	11%	29	13%	37	14%	19	106%
Juniors*	28	17%	47	21%	53	21%	25	89%
Seniors*	49	30%	64	28%	77	30%	28	57%
Graduates	20	12%	34	15%	27	11%	7	0%
<b>School Total</b>	166	4%	226	6%	256	6%	90	54%
<b>DSU TOTAL</b>	3785	100%	3853	100%	3998	100%	213	5.6%



Source: IHL Statistical Report  
Date : June 2006

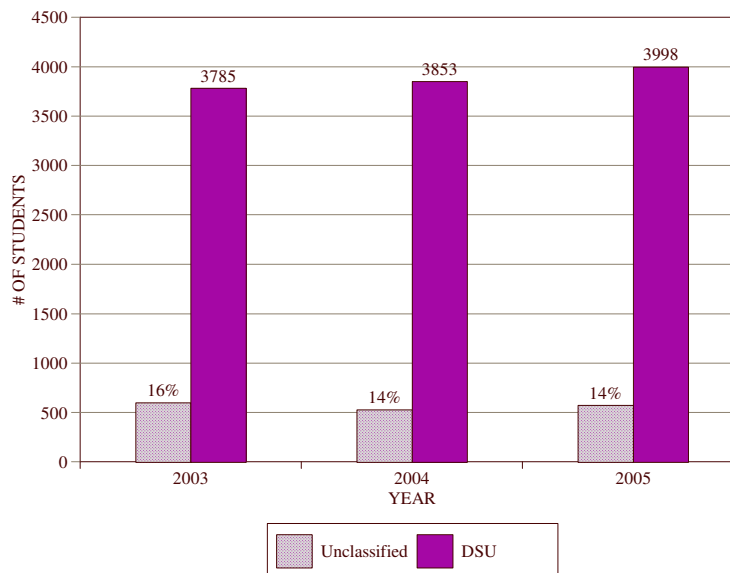
\* Classification estimated

# DELTA STATE UNIVERSITY

## 3-YEAR ENROLLMENT PROFILE

### UNCLASSIFIED MAJOR

FALL SEMESTER	2003		2004		2005		3-YR CHANGE	
	#	%	#	%	#	%	#	%
<b>STATUS</b>								
Full-time	205	34%	250	47%	238	42%	33	16%
Part-time	395	66%	280	53%	334	58%	-61	-15%
<b>GENDER</b>								
Female	381	64%	322	61%	370	65%	-11	-3%
Male	219	37%	208	39%	202	35%	-17	-8%
<b>RESIDENCY</b>								
In-State	569	95%	482	91%	509	89%	-60	-11%
Out-of-State	31	5%	48	9%	63	11%	32	103%
<b>CLASSIFICATION</b>								
Freshmen*	255	43%	112	21%	105	18%	-150	-59%
Sophomores*	95	16%	63	12%	61	11%	-34	-36%
Juniors*	86	14%	101	19%	93	16%	7	8%
Seniors*	88	15%	139	26%	134	23%	46	52%
Graduates	76	13%	115	22%	179	31%	103	136%
<b>School Total</b>	600	16%	530	14%	572	14%	-28	-5%
<b>DSU TOTAL</b>	3785	100%	3853	100%	3998	100%	213	5.6%



Source: IHL Statistical Report  
Date : June 2006

\* Classification estimated

**DELTA STATE UNIVERSITY**  
**ON-CAMPUS ENROLLMENT PROFILE**  
**5-YEAR TREND**

Fall Semester	2001		2002		2003		2004		2005	
	#	%	#	%	#	%	#	%	#	%
TOTAL UNIVERSITY	3746	100%	3825	100%	3785	100%	3853	100%	3998	100%
Full-time	3013	80%	2791	73%	2754	73%	2913	76%	3000	75%
Part-time	733	20%	1034	27%	1031	27%	940	24%	998	25%
FTE	3277		3088		3097		3211		3305	
Total Undergraduate	3292	88%	3218	84%	3156	83%	3148	82%	3258	81%
Total Graduate	454	12%	607	16%	629	17%	705	18%	740	19%
Freshmen*	932	24.9%	842	22.0%	772	20.4%	848	22.0%	879	22.0%
Sophomores*	524	14.0%	520	13.6%	529	14.0%	479	12.4%	520	13.0%
Juniors*	787	21.0%	804	21.0%	795	21.0%	767	19.9%	760	19.0%
Seniors*	1049	28.0%	1052	27.5%	1060	28.0%	1054	27.4%	1099	27.5%
Masters	399	10.7%	531	13.9%	544	14.4%	597	15.5%	628	15.7%
Specialists	26	0.7%	31	0.8%	36	1.0%	49	1.3%	49	1.2%
Doctoral	29	0.8%	45	1.2%	49	1.3%	59	1.5%	63	1.6%
First-time Freshmen	430	11.5%	356	9.3%	330	8.7%	383	9.9%	398	10.0%
Returning Student	1942	51.8%	2077	54.3%	2109	55.7%	1950	50.6%	1966	49.2%
Readmitted Student	174	4.6%	157	4.1%	170	4.5%	128	3.3%	174	4.4%
Transfer Student	578	15.4%	469	12.3%	432	11.4%	571	14.8%	593	14.8%
Returning Grad. Student	338	9.0%	501	13.1%	484	12.8%	585	15.2%	646	16.2%
High School Student	24	0.6%	0	0.0%	0	0.0%	0	0.0%	21	0.5%
Transient	0	0.0%	30	0.8%	22	0.6%	15	0.4%	13	0.3%
Non-Formula Student**	53	1.4%	44	1.2%	41	1.1%	37	1.0%	25	0.6%
First-time Grad. Student	207	5.5%	191	5.0%	197	5.2%	187	4.9%	162	4.1%
In-State	3445	92%	3490	91%	3432	91%	3475	90%	3625	91%
Out-of-State	301	8%	335	9%	353	9%	378	10%	373	9%
Men	1439	38%	1465	38%	1400	37%	1451	38%	1513	38%
Women	2307	62%	2360	62%	2385	63%	2402	62%	2485	62%
Caucasian	2509	67.0%	2453	64.1%	2387	63.1%	2268	58.9%	2277	57.0%
Asian	13	0.3%	13	0.3%	20	0.5%	16	0.4%	26	0.7%
Black	1201	32.1%	1336	34.9%	1342	35.5%	1539	39.9%	1654	41.4%
American Indian	10	0.3%	18	0.5%	25	0.7%	8	0.2%	10	0.3%
Hispanic	13	0.3%	5	0.1%	11	0.3%	22	0.6%	31	0.8%

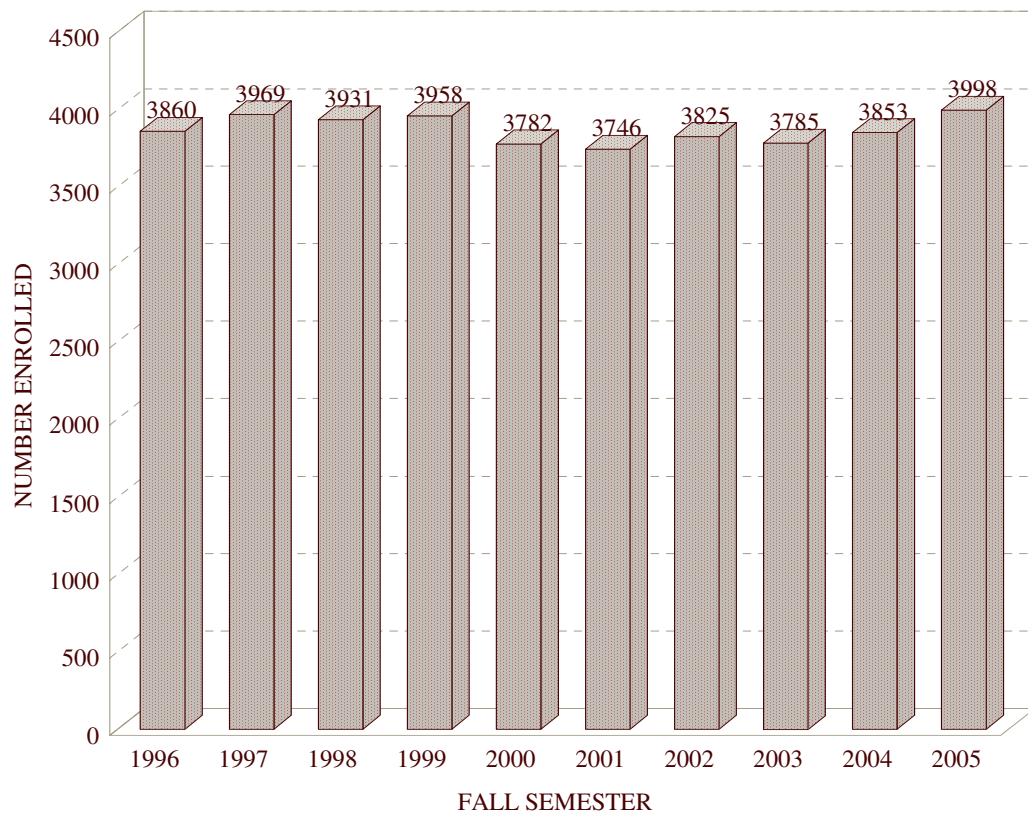
Source: IHL Statistical Report

\* Classification estimated

Date : June 2006

\*\* "Over 21"

**DELTA STATE UNIVERSITY  
ON-CAMPUS HEADCOUNT ENROLLMENT  
FALL 1996-2005**



Source: IHL Statistical Report  
Date : January 2006

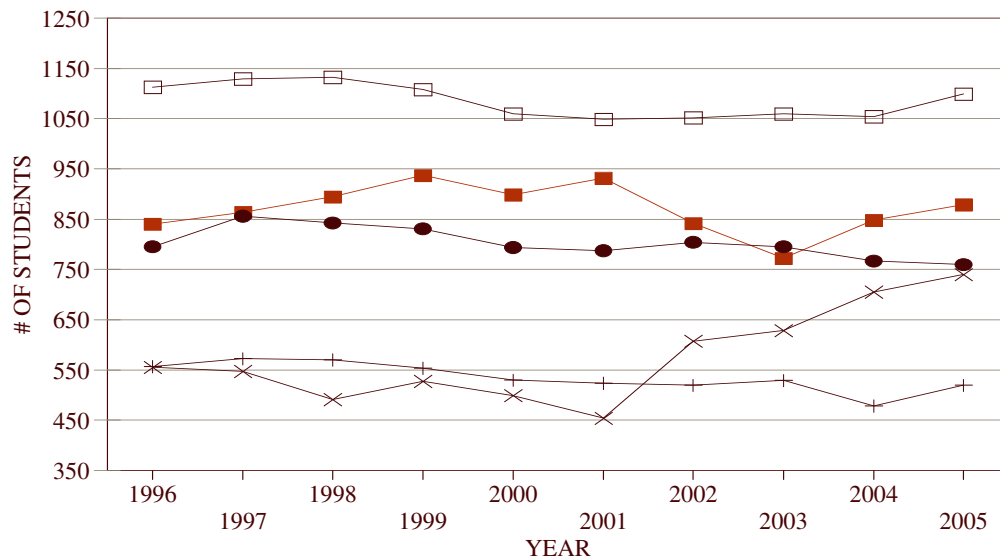


# DELTA STATE UNIVERSITY

## ON-CAMPUS ENROLLMENT OF STUDENTS BY CLASS

### 10-YEAR TREND

FALL SEMESTER	FRESHMAN*		SOPHOMORE*		JUNIOR*		SENIOR*		GRADUATE		TOTAL	
	#	%	#	%	#	%	#	%	#	%	#	%
1996	840	22%	557	14%	795	21%	1113	29%	555	14%	3860	100%
1997	864	22%	573	14%	856	22%	1129	28%	547	14%	3969	100%
1998	895	23%	570	15%	843	21%	1132	29%	491	12%	3931	100%
1999	937	24%	554	14%	831	21%	1108	28%	528	13%	3958	100%
2000	899	24%	530	14%	794	21%	1060	28%	499	13%	3782	100%
2001	932	25%	524	14%	787	21%	1049	28%	454	12%	3746	100%
2002	842	22%	520	14%	804	21%	1052	28%	607	16%	3825	100%
2003	772	20%	529	14%	795	21%	1060	28%	629	17%	3785	100%
2004	848	22%	479	12%	767	20%	1054	27%	705	18%	3853	100%
2005	879	22%	520	13%	760	19%	1099	27%	740	19%	3998	100%
10-YEAR CHG.	39	5%	-37	-7%	-35	-4%	-14	-1%	185	33%	138	4%



Source: IHL Statistical Report  
Date : April 2006

\* Classification estimated for years 1996-2005

# DELTA STATE UNIVERSITY

## ON-CAMPUS ENROLLMENT OF STUDENTS BY GENDER

### 10-YEAR TREND

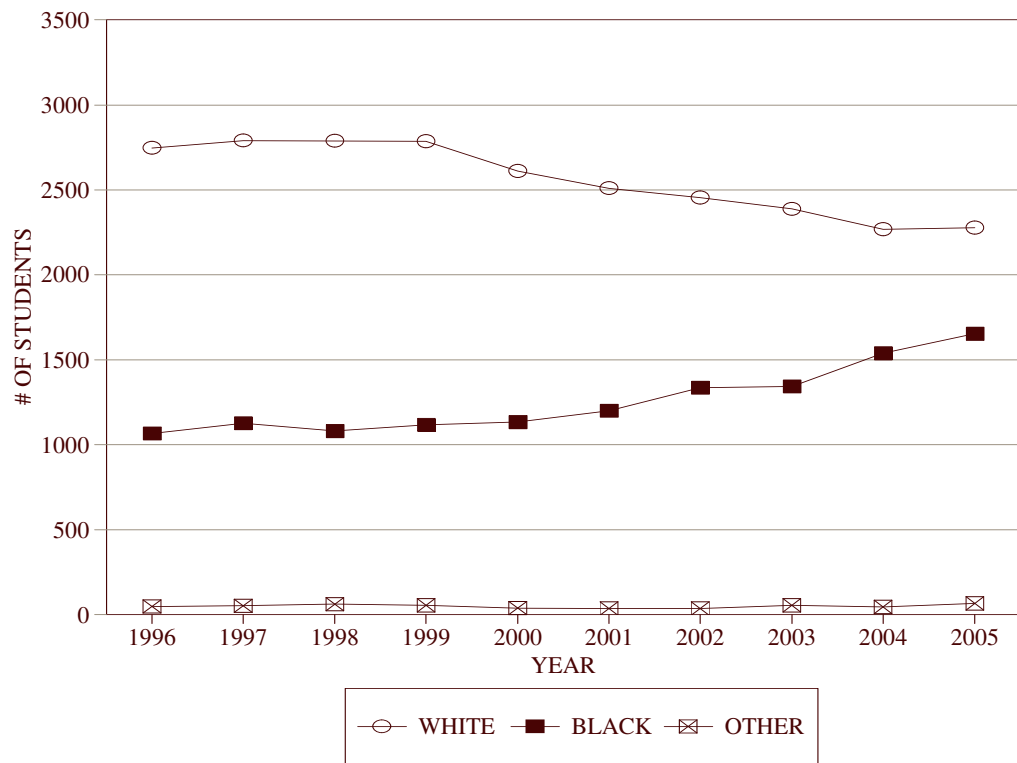
FALL SEMESTER	MALE		FEMALE		TOTAL	
	#	%	#	%	#	%
1996	1526	40%	2334	60%	3860	100%
1997	1535	39%	2434	61%	3969	100%
1998	1540	39%	2391	61%	3931	100%
1999	1574	40%	2384	60%	3958	100%
2000	1483	39%	2299	61%	3782	100%
2001	1439	38%	2307	62%	3746	100%
2002	1465	38%	2360	62%	3825	100%
2003	1400	37%	2385	63%	3785	100%
2004	1451	38%	2402	62%	3853	100%
2005	1513	38%	2485	62%	3998	100%
10-YEAR CHANGE	-13	-1%	151	6%	138	4%



Source: IHL Statistical Report  
Date : January 2006

**DELTA STATE UNIVERSITY**  
**ON-CAMPUS ENROLLMENT OF STUDENTS BY RACE**  
**10-YEAR TREND**

FALL SEMESTER	WHITE		BLACK		OTHER		TOTAL	
	#	%	#	%	#	%	#	%
1996	2745	71%	1067	28%	48	1%	3860	100%
1997	2789	70%	1126	28%	54	1%	3969	100%
1998	2788	71%	1081	27%	62	2%	3931	100%
1999	2784	70%	1118	28%	56	1%	3958	100%
2000	2610	69%	1133	30%	39	1%	3782	100%
2001	2509	67%	1201	32%	36	1%	3746	100%
2002	2453	64%	1336	35%	36	1%	3825	100%
2003	2387	63%	1342	35%	56	1%	3785	100%
2004	2268	59%	1539	40%	46	1%	3853	100%
2005	2277	57%	1654	41%	67	2%	3998	100%
10-YEAR CHANGE	-468	-17%	587	55%	19	40%	138	4%



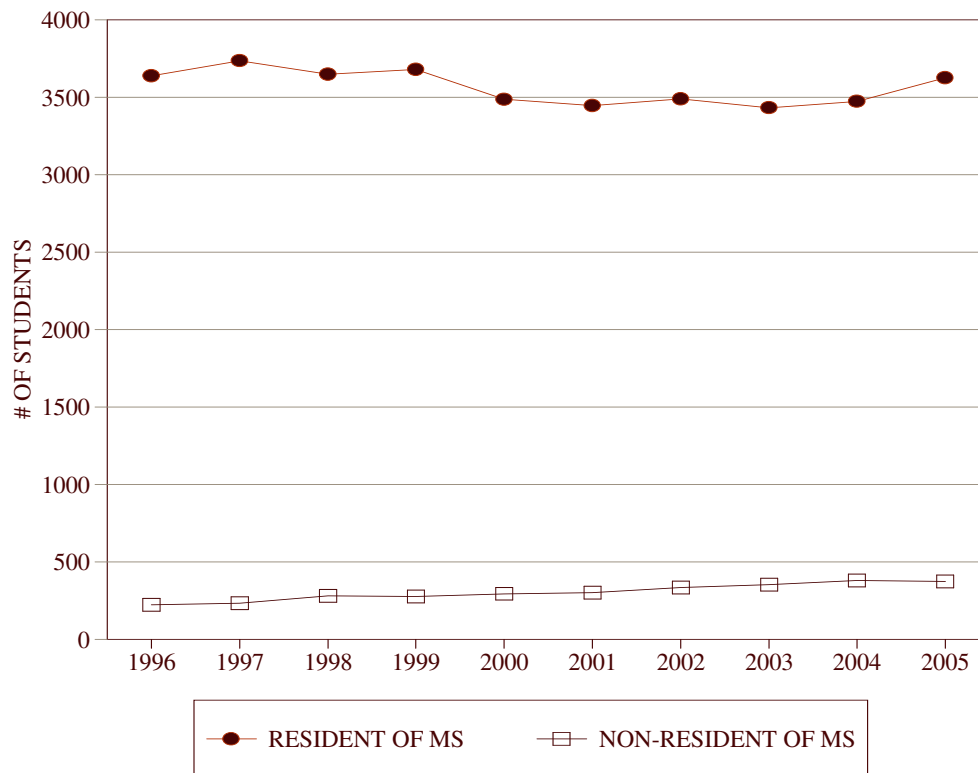
Source: IHL Statistical Report  
Date : January 2006

# DELTA STATE UNIVERSITY

## ON-CAMPUS ENROLLMENT OF STUDENTS BY RESIDENCY

### 10-YEAR TREND

FALL SEMESTER	IN-STATE		OUT-OF-STATE		TOTAL	
	#	%	#	%	#	%
1996	3639	94%	221	6%	3860	100%
1997	3736	94%	233	6%	3969	100%
1998	3649	93%	282	7%	3931	100%
1999	3681	93%	277	7%	3958	100%
2000	3488	92%	294	8%	3782	100%
2001	3445	92%	301	8%	3746	100%
2002	3490	91%	335	9%	3825	100%
2003	3433	91%	352	9%	3785	100%
2004	3475	90%	378	10%	3853	100%
2005	3625	91%	373	9%	3998	100%
10-YEAR CHANGE	-14	-0%	152	69%	138	4%



Source: IHL Statistical Report

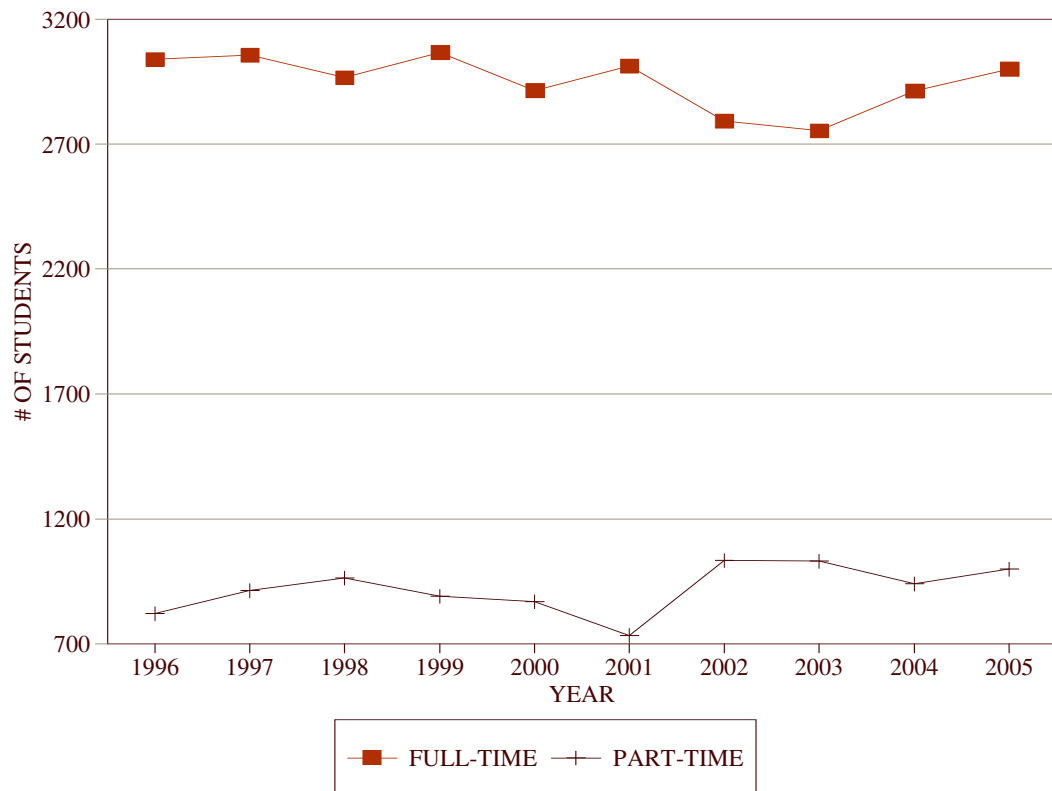
Date : January 2006

# DELTA STATE UNIVERSITY

## ON-CAMPUS ENROLLMENT OF STUDENTS BY STATUS

### 10-YEAR TREND

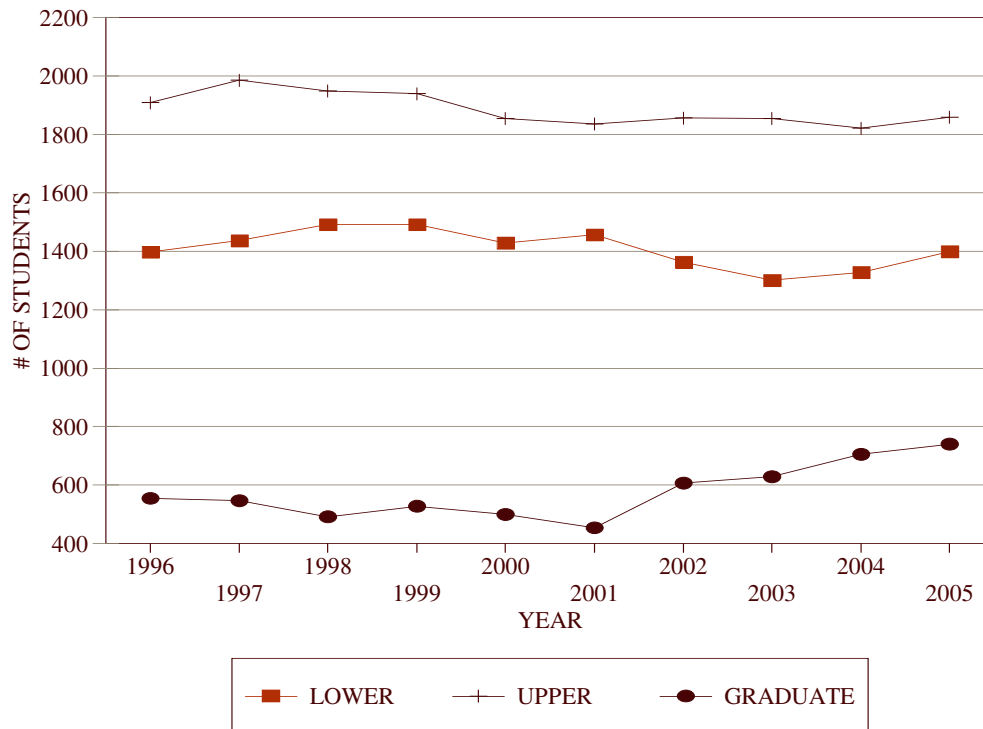
FALL SEMESTER	FULL-TIME		PART-TIME		TOTAL	
	#	%	#	%	#	%
1996	3040	79%	820	21%	3860	100%
1997	3056	77%	913	23%	3969	100%
1998	2967	75%	964	25%	3931	100%
1999	3067	77%	891	23%	3958	100%
2000	2914	77%	868	23%	3782	100%
2001	3013	80%	733	20%	3746	100%
2002	2791	73%	1034	27%	3825	100%
2003	2754	73%	1031	27%	3785	100%
2004	2913	76%	940	24%	3853	100%
2005	3000	75%	998	25%	3998	100%
10-YEAR CHANGE	-40	-1%	178	22%	138	4%



Source: IHL Statistical Report  
Date : January 2006

# **DELTA STATE UNIVERSITY** **ON-CAMPUS ENROLLMENT OF STUDENTS BY LEVEL** **10-YEAR TREND**

FALL SEMESTER	LOWER LEVEL		UPPER LEVEL		GRADUATE		TOTAL	
	#	%	#	%	#	%	#	%
1996	1397	36%	1908	49%	555	14%	3860	100%
1997	1437	36%	1985	50%	547	14%	3969	100%
1998	1492	38%	1948	50%	491	12%	3931	100%
1999	1491	38%	1939	49%	528	13%	3958	100%
2000	1429	38%	1854	49%	499	13%	3782	100%
2001	1456	39%	1836	49%	454	12%	3746	100%
2002	1362	36%	1856	49%	607	16%	3825	100%
2003	1301	34%	1855	49%	629	17%	3785	100%
2004	1327	34%	1821	47%	705	18%	3853	100%
2005	1399	35%	1859	46%	740	19%	3998	100%
10-YEAR CHANGE	2	0%	-49	-3%	185	33%	138	4%



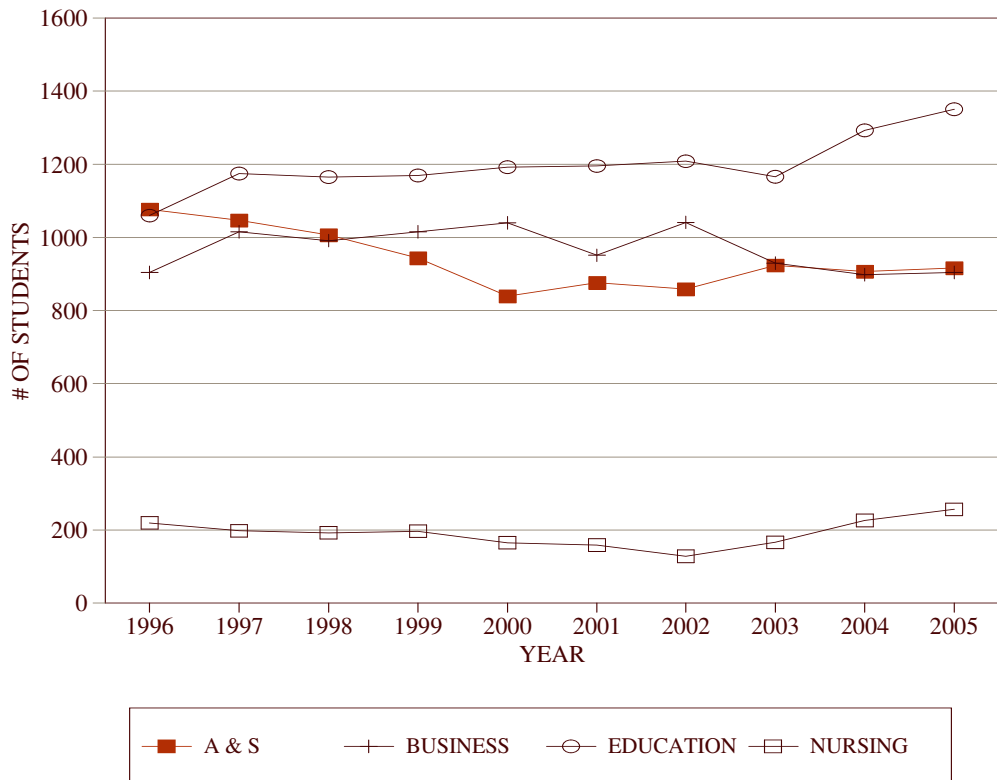
Source: IHL Statistical Report  
Date : January 2006

# DELTA STATE UNIVERSITY

## ON-CAMPUS ENROLLMENT OF STUDENTS BY SCHOOL

### 10-YEAR TREND

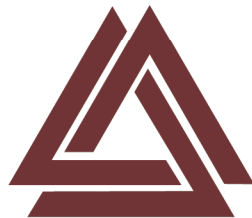
FALL SEMESTER	A & S		BUSINESS		EDUCATION		NURSING		TOTAL	
	#	%	#	%	#	%	#	%	#	%
1996	1077	33%	904	28%	1059	32%	219	7%	3259	100%
1997	1046	30%	1015	30%	1174	34%	198	6%	3433	100%
1998	1006	30%	991	30%	1165	35%	192	6%	3354	100%
1999	943	28%	1015	31%	1169	35%	196	6%	3323	100%
2000	839	26%	1040	32%	1192	37%	165	5%	3236	100%
2001	876	28%	951	30%	1195	38%	159	5%	3181	100%
2002	859	27%	1041	32%	1208	37%	128	4%	3236	100%
2003	924	29%	929	29%	1166	37%	166	5%	3185	100%
2004	906	27%	898	27%	1293	39%	226	7%	3323	100%
2005	916	27%	904	26%	1350	39%	256	7%	3426	100%
10-YEAR CHG.	-161	-15%	0	0%	291	27%	37	17%	167	5%



Source: IHL Statistical Report

Date : January 2006

# Housing & Residency



Delta State University



<p style="text-align: center;"><b>DELTA STATE UNIVERSITY</b>  <b>MEN'S &amp; WOMEN'S RESIDENCE HALLS - COMPARATIVE ROOM REPORT</b>  <b>5-YEAR TREND</b></p>						
RESIDENCE HALLS	10/01/01	10/01/02	10/01/03	10/01/04	10/01/05	Capacity
<i><b>MEN'S</b></i>						
Whittington-Williams	100	102	106	109	99	106
Bond-Carpenter	97	91	79	104	104	124
Stadium	61	34	0	0	0	0
Noel	0	50	47	42	45	65
Brewer	0	36	52	60	56	59
Clark	45	0	0	0	0	0
Longino	46	0	0	0	0	0
Woolfolk	24	0	0	0	0	0
New Men's Hall	146	147	153	157	160	170
<b>TOTALS</b>	<b>519</b>	<b>460</b>	<b>437</b>	<b>472</b>	<b>464</b>	<b>524</b>
<b>Classification Breakdown</b>						
Freshmen	122	119	115	149	157	
Sophomores	122	107	111	109	97	
Juniors	137	117	102	133	122	
Seniors	120	107	88	73	78	
Graduates	18	10	21	8	10	
<b>TOTALS</b>	<b>519</b>	<b>460</b>	<b>437</b>	<b>472</b>	<b>464</b>	
<i><b>WOMEN'S</b></i>						
Brumby-Castle	183	160	149	168	158	181
Cleveland	78	52	44	52	47	81
Cain-Tatum	84	110	108	97	88	102
Fugler-Hammett	111	92	97	86	73	124
Lawler-Harkins	250	197	180	218	208	262
Ward	28	61	43	42	49	73
<b>TOTALS</b>	<b>734</b>	<b>672</b>	<b>621</b>	<b>663</b>	<b>623</b>	<b>823</b>
<b>Classification Breakdown</b>						
Freshmen	197	186	157	192	195	
Sophomores	191	162	154	168	149	
Juniors	172	172	184	172	158	
Seniors	160	137	116	122	110	
Graduates	14	15	10	9	11	
<b>TOTALS</b>	<b>734</b>	<b>672</b>	<b>621</b>	<b>663</b>	<b>623</b>	
<i><b>OVERALL TOTALS</b></i>						
Freshmen	319	305	272	341	352	
Sophomores	313	269	265	277	246	
Juniors	309	289	286	305	280	
Seniors	280	244	204	195	188	
Graduates	32	25	31	17	21	
<b>TOTALS</b>	<b>1253</b>	<b>1132</b>	<b>1058</b>	<b>1135</b>	<b>1087</b>	
Source: Housing & Residence Life Date : February 2006						

**DELTA STATE UNIVERSITY**  
**ON-CAMPUS ENROLLMENT OF STUDENTS BY COUNTIES**  
**5-YEAR TREND**

COUNTIES	FALL 2001	FALL 2002	FALL 2003	FALL 2004	FALL 2005	5-YEAR CHANGE
Adams	18	16	10	14	13	-5
Alcorn	8	5	3	6	3	-5
Amite	6	4	3	0	2	-4
Attala	23	14	9	10	21	-2
Benton	4	5	4	3	2	-2
Bolivar	1048	1074	1132	1040	1037	-11
Calhoun	18	11	8	10	11	-7
Carroll	33	40	30	25	22	-11
Chickasaw	7	7	6	4	4	-3
Choctaw	3	5	4	5	8	5
Claiborne	2	3	2	0	0	-2
Clarke	1	3	3	2	3	2
Clay	4	7	4	5	4	0
Coahoma	204	223	196	200	237	33
Copiah	10	5	8	6	7	-3
Covington	1	1	1	4	4	3
Desoto	102	112	105	130	144	42
Forrest	4	5	9	5	9	5
Franklin	0	0	0	0	2	2
George	2	2	2	2	3	1
Greene	1	0	0	0	0	-1
Grenada	114	101	107	99	111	-3
Hancock	0	0	0	0	0	0
Harrison	27	26	21	12	13	-14
Hinds	72	76	68	85	70	-2
Holmes	21	15	18	14	20	-1
Humphreys	56	57	57	57	63	7

Source: IHL Statistical Report

Date : February 2006

Page 1 of 3

**DELTA STATE UNIVERSITY**  
**ON-CAMPUS ENROLLMENT OF STUDENTS BY COUNTIES**  
**5-YEAR TREND**

COUNTIES	FALL 2001	FALL 2002	FALL 2003	FALL 2004	FALL 2005	5-YEAR CHANGE
Issaquena	6	5	9	11	10	4
Itawamba	6	6	6	2	5	-1
Jackson	15	10	12	19	21	6
Jasper	3	2	3	2	3	0
Jefferson	5	6	5	3	5	0
Jefferson Davis	4	3	2	2	1	-3
Jones	13	17	9	5	13	0
Kemper	1	1	3	4	4	3
Lafayette	8	15	14	20	29	21
Lamar	6	4	3	3	5	-1
Lauderdale	6	9	10	15	20	14
Lawrence	1	2	4	4	7	6
Leake	6	4	6	6	7	1
Lee	27	29	34	37	36	9
Leflore	140	131	135	142	124	-16
Lincoln	6	5	6	8	11	5
Lowndes	21	15	7	9	12	-9
Madison	39	42	50	56	62	23
Marion	1	1	1	5	7	6
Marshall	18	18	14	14	13	-5
Monroe	17	16	22	15	15	-2
Montgomery	26	21	17	18	19	-7
Neshoba	10	8	7	6	4	-6
Newton	3	0	1	3	4	1
Noxubee	4	1	0	0	1	-3
Oktibbeha	8	7	8	5	11	3
Panola	61	55	68	62	65	4
Pearl River	7	8	2	4	5	-2

Source: IHL Statistical Report

Date : February 2006

Page 2 of 3

**DELTA STATE UNIVERSITY**  
**ON-CAMPUS ENROLLMENT OF STUDENTS BY COUNTIES**  
**5-YEAR TREND**

COUNTIES	FALL 2001	FALL 2002	FALL 2003	FALL 2004	FALL 2005	5-YEAR CHANGE
Perry	1	1	1	1	1	0
Pike	13	9	10	12	12	-1
Pontotoc	11	13	10	13	8	-3
Prentiss	3	1	4	2	3	0
Quitman	33	35	42	40	34	1
Rankin	62	59	55	58	57	-5
Scott	8	5	5	8	5	-3
Sharkey	35	34	29	30	32	-3
Simpson	3	5	1	2	4	1
Smith	8	5	3	5	4	-4
Stone	2	1	2	4	4	2
Sunflower	255	288	265	265	292	37
Tallahatchie	63	59	68	71	79	16
Tate	35	28	28	39	49	14
Tippah	8	5	5	1	4	-4
Tishomingo	2	2	2	0	2	0
Tunica	12	18	15	14	21	9
Union	9	11	9	9	10	1
Walthall	0	0	1	3	4	4
Warren	45	42	38	40	29	-16
Washington	494	538	499	556	567	73
Wayne	1	2	1	3	2	1
Webster	4	3	1	3	2	-2
Wilkinson	0	1	4	0	0	0
Winston	10	5	4	2	1	-9
Yalobusha	34	30	27	27	21	-13
Yazoo	37	32	36	49	46	9
TOTALS	3445	3490	3433	3475	3625	180

Source: IHL Statistical Report

Date : February 2006

Page 3 of 3

**DELTA STATE UNIVERSITY**  
**ON-CAMPUS ENROLLMENT OF STUDENTS BY STATES AND COUNTRIES**  
**5-YEAR TREND**

STATES	FALL 2001	FALL 2002	FALL 2003	FALL 2004	FALL 2005	5-YEAR CHANGE
<b>TOTAL - STATES</b>	<b>3713</b>	<b>3782</b>	<b>3749</b>	<b>3803</b>	<b>3947</b>	<b>234</b>
Alabama	12	18	20	24	21	9
Alaska	0	0	0	1	1	1
Arizona	1	0	0	0	2	1
Arkansas	50	50	57	59	57	7
California	0	3	4	4	3	3
Colorado	2	4	5	6	2	0
Connecticut	0	0	0	0	0	0
Delaware	0	0	0	0	0	0
District of Columbia	0	0	0	0	0	0
Florida	17	20	24	35	40	23
Georgia	5	5	3	7	8	3
Hawaii	0	0	0	0	0	0
Idaho	0	0	0	0	0	0
Illinois	3	1	4	4	8	5
Indiana	5	2	3	3	2	-3
Iowa	0	0	0	2	1	1
Kansas	0	1	1	0	0	0
Kentucky	6	2	3	3	3	-3
Louisiana	36	35	35	35	36	0
Maine	0	0	0	0	0	0
Maryland	2	1	2	2	2	0
Massachusetts	0	0	0	0	0	0
Michigan	0	2	1	2	2	2
Minnesota	0	2	1	1	1	1
Mississippi	3445	3490	3433	3475	3625	180

Source: IHL Statistical Report  
Date : December 2005

Page 1 of 3

**DELTA STATE UNIVERSITY**  
**ON-CAMPUS ENROLLMENT OF STUDENTS BY STATES AND COUNTRIES**  
**5-YEAR TREND**

STATES	FALL 2001	FALL 2002	FALL 2003	FALL 2004	FALL 2005	5-YEAR CHANGE
STATES (CONT.)						
Missouri	2	5	7	15	13	11
Montana	0	1	1	0	0	0
Nebraska	1	2	2	2	1	0
Nevada	0	0	0	0	1	1
New Hampshire	0	0	0	0	0	0
New Jersey	0	0	0	0	3	3
New Mexico	0	0	1	0	0	0
New York	0	0	0	1	1	1
North Carolina	0	2	3	3	4	4
North Dakota	0	0	0	0	0	0
Ohio	4	6	2	0	1	-3
Oklahoma	0	0	1	2	4	4
Oregon	1	1	1	1	2	1
Pennsylvania	2	2	3	3	1	-1
Rhode Island	1	0	0	0	0	-1
South Carolina	2	0	1	0	0	-2
South Dakota	0	0	0	0	0	0
Tennessee	84	93	87	77	67	-17
Texas	25	29	35	27	26	1
Utah	2	3	3	3	0	-2
Vermont	0	0	0	0	0	0
Virginia	2	1	1	2	2	0
Washington	3	1	3	2	4	1
West Virginia	0	0	2	1	0	0
Wisconsin	0	0	0	0	2	2
Wyoming	0	0	0	1	1	1

Source: IHL Statistical Report

Date : December 2005

Page 2 of 3

**DELTA STATE UNIVERSITY**  
**ON-CAMPUS ENROLLMENT OF STUDENTS BY STATES AND COUNTRIES**  
**5-YEAR TREND**

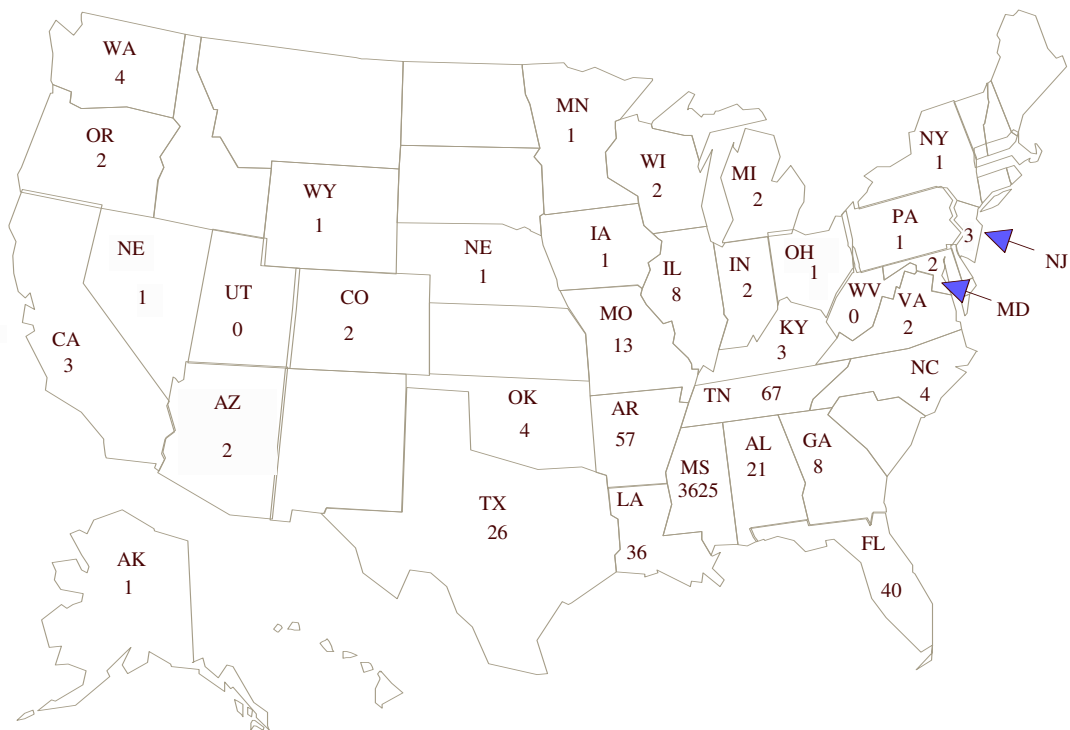
COUNTRIES	FALL 2001	FALL 2002	FALL 2003	FALL 2004	FALL 2005	5-YEAR CHANGE
<b>TOTAL - COUNTRIES</b>	<b>33</b>	<b>43</b>	<b>36</b>	<b>50</b>	<b>51</b>	<b>18</b>
Belgium	0	0	0	1	0	0
Brazil	0	0	0	1	6	6
Bulgaria	0	0	0	0	1	1
Canada	4	4	4	6	7	3
Dominica	0	0	0	0	1	1
Estonia	0	0	0	1	0	0
Finland	0	0	0	3	2	2
France	5	7	4	6	7	2
Georgia	0	0	0	1	0	0
Germany	0	0	0	1	0	0
India	2	1	0	0	0	-2
Israel	0	0	0	1	1	1
Kenya	0	0	0	3	5	5
Lebanon	0	0	0	1	1	1
Mexico	0	0	0	1	0	0
Nepal	0	0	0	1	0	0
New Zealand	0	0	0	1	0	0
Nigeria	2	3	2	2	2	0
Peru	0	0	0	1	0	0
Poland	2	2	0	0	0	-2
Russia	0	0	0	1	1	1
South Africa	9	5	4	3	2	-7
Spain	0	0	0	1	1	1
Turkmenistan	0	0	0	1	2	2
Turkey	3	5	9	11	9	6
Uruguay	0	0	0	1	2	2
Uzbekistan	0	1	0	0	0	0
Venezuela	0	0	0	1	1	1
Undefined	6	15	13	0	0	-6
<b>GRAND TOTAL</b>	<b>3746</b>	<b>3825</b>	<b>3785</b>	<b>3853</b>	<b>3998</b>	<b>252</b>

Source: IHL Statistical Report

Date : December 2005

Page 3 of 3

# **DELTA STATE UNIVERSITY** **ON- CAMPUS ENROLLMENT OF STUDENTS BY STATES** **FALL 2005**



Source: IHL Statistical Report  
 Date : February 2006



# Majors



Delta State University

**DELTA STATE UNIVERSITY**  
**UNDERGRADUATE MAJORS BY GENDER AND MINORITY STATUS**  
**FALL 2005**

Undergraduate Majors	Male		Female		Total #	Minorities	
	#	%	#	%		#	%
Undeclared (Undergraduate)	165	38.4%	265	61.6%	430	96	22.3%
Art	51	39.2%	79	60.8%	130	26	20.0%
Biology	76	39.4%	117	60.6%	193	94	48.7%
Environmental Science	6	66.7%	3	33.3%	9	1	11.1%
History	22	78.6%	6	21.4%	28	5	17.9%
English	9	32.1%	19	67.9%	28	8	28.6%
Foreign Languages	1	33.3%	2	66.7%	3	1	33.3%
Speech Comm. & Theatre Arts	3	42.9%	4	57.1%	7	3	42.9%
Journalism	7	53.8%	6	46.2%	13	7	53.8%
Mathematics	11	57.9%	8	42.1%	19	8	42.1%
Music	33	73.3%	12	26.7%	45	10	22.2%
Interdisciplinary Studies	4	57.1%	3	42.9%	7	2	28.6%
Chemistry	24	42.9%	32	57.1%	56	12	21.4%
Political Science	6	30.0%	14	70.0%	20	8	40.0%
Criminal Justice	50	42.7%	67	57.3%	117	60	51.3%
Social Science	13	36.1%	23	63.9%	36	21	58.3%
Social Work	19	16.5%	96	83.5%	115	93	80.9%
Speech & Hearing Science	2	2.0%	98	98.0%	100	41	41.0%
Biology Education	3	23.1%	10	76.9%	13	9	69.2%
English Education	10	35.7%	18	64.3%	28	15	53.6%
Mathematics Education	13	39.4%	20	60.6%	33	10	30.3%
Music Education	32	66.7%	16	33.3%	48	7	14.6%

Source: Institutional Research & Planning

Date : December 2005

**DELTA STATE UNIVERSITY**  
**UNDERGRADUATE MAJORS BY GENDER AND MINORITY STATUS**  
**FALL 2005**

Undergraduate Majors	Male		Female		Total #	Minorities	
	#	%	#	%		#	%
Social Science Education	36	61.0%	23	39.0%	59	28	47.5%
Accounting	54	41.9%	75	58.1%	129	38	29.5%
Office Administration	1	7.1%	13	92.9%	14	13	92.9%
Aviation Management	25	100.0%	0	0.0%	25	8	32.0%
Flight Operations	73	94.8%	4	5.2%	77	7	9.1%
Computer Information Systems	82	55.4%	66	44.6%	148	100	67.6%
Finance	25	75.8%	8	24.2%	33	9	27.3%
Hospitality Services Management	1	33.3%	2	66.7%	3	2	66.7%
Insurance & Real Estate	31	70.5%	13	29.5%	44	20	45.5%
General Business	105	57.1%	79	42.9%	184	68	37.0%
Management	79	62.7%	47	37.3%	126	35	27.8%
Marketing	28	48.3%	30	51.7%	58	13	22.4%
Business Education	2	28.6%	5	71.4%	7	6	85.7%
Psychology	22	27.8%	57	72.2%	79	40	50.6%
Special Education	3	9.1%	30	90.9%	33	17	51.5%
Elementary Education	18	5.7%	299	94.3%	317	171	53.9%
Health, Phys. Ed. & Recreation	132	71.4%	53	28.6%	185	78	42.2%
Athletic Training	30	68.2%	14	31.8%	44	16	36.4%
Family & Consumer Science	2	1.7%	117	98.3%	119	71	59.7%
Fashion Merchandising	0	0.0%	24	100.0%	24	9	37.5%
Nursing	37	14.7%	214	85.3%	251	113	45.0%
<b>TOTALS</b>	<b>1346</b>	<b>39.2%</b>	<b>2091</b>	<b>60.8%</b>	<b>3437</b>	<b>1399</b>	<b>40.7%</b>

Source: Institutional Research & Planning

Date : December 2005

**DELTA STATE UNIVERSITY**  
**GRADUATE MAJORS BY GENDER AND MINORITY STATUS**  
**FALL 2005**

Graduate Majors	Male		Female		Total #	Minorities	
	#	%	#	%		#	%
Non-Degree (Graduate)	46	25.7%	133	74.3%	179	96	53.6%
Nursing	3	11.1%	24	88.9%	27	10	37.0%
Natural Sciences	1	8.3%	11	91.7%	12	6	50.0%
Criminal Justice	2	66.7%	1	33.3%	3	1	33.3%
Community Development	1	50.0%	1	50.0%	2	1	50.0%
History Education	2	100.0%	0	0.0%	2	1	50.0%
English Education	1	10.0%	9	90.0%	10	4	40.0%
Music Education	0	0.0%	1	100.0%	1	0	0.0%
Social Science Education	3	27.3%	8	72.7%	11	3	27.3%
Accounting	0	0.0%	1	100.0%	1	0	0.0%
Commercial Aviation	27	93.1%	2	6.9%	29	2	6.9%
Business Administration	32	45.1%	39	54.9%	71	24	33.8%
Counseling	17	15.3%	94	84.7%	111	76	68.5%
School Psychology	0	0.0%	1	100.0%	1	1	100.0%
Special Education	7	14.0%	43	86.0%	50	45	90.0%
Elementary Education *	3	5.3%	54	94.7%	57	37	64.9%
Administration & Supervision	14	23.3%	46	76.7%	60	41	68.3%
Secondary Education	4	50.0%	4	50.0%	8	4	50.0%
Health, Phys. Ed. & Recreation	30	68.2%	14	31.8%	44	16	36.4%
Professional Studies **	13	21.3%	48	78.7%	61	39	63.9%
<b>TOTALS</b>	<b>206</b>	<b>27.8%</b>	<b>534</b>	<b>72.2%</b>	<b>740</b>	<b>407</b>	<b>55.0%</b>

Source: Institutional Research & Planning \* Denotes Masters and Specialist Programs  
Date : December 2005 \*\* Denotes Doctoral Program

# Retention



Delta State University

**DELTA STATE UNIVERSITY**  
**RETENTION OF FIRST-TIME ENTERING FRESHMEN BY ACT SCORE CATEGORY**  
**FOR 1999-00 FRESHMAN CLASS**

<b>Year *</b>	<b>ACT 28-36 Fall Semester</b>				<b>ACT 22-27 Fall Semester</b>				<b>ACT 19-21 Fall Semester</b>				<b>ACT 16-18 Fall Semester</b>			
	Enr.	Cumm. GPA	% of Orig.	Deg. Awd.	Enr.	Cumm. GPA	% of Orig.	Deg. Awd.	Enr.	Cumm. GPA	% of Orig.	Deg. Awd.	Enr.	Cumm. GPA	% of Orig.	Deg. Awd.
FY 99-00	13				104				152				157			
FY 00-01	10	3.56	76.9%	0	75	3.23	72.1%	0	99	2.61	65.1%	0	101	2.37	64.3%	0
FY 01-02	10	3.12	76.9%	0	67	3.23	64.4%	2	85	2.79	55.9%	3	82	2.57	52.2%	0
FY 02-03	9	3.64	69.2%	4	60	3.31	57.7%	33	76	2.84	50.0%	35	79	2.6	50.3%	22
FY 03-04	5	3.42	38.5%	3	32	3.14	30.8%	20	45	2.81	29.6%	15	56	2.55	35.7%	33
FY 04-05	3	3.42	23.1%	3	13	3.27	12.5%	3	27	2.88	17.8%	11	30	2.58	19.1%	12
Total Degrees				10				58				64				67
Percentage				76.9%				55.8%				42.1%				42.7%
<b>Year *</b>	<b>ACT 15 and Below Fall Semester</b>				<b>ACT Not Available Fall Semester</b>				<b>TOTAL Fall Semester</b>							
	Enr.	Cumm. GPA	% of Orig.	Deg. Awd.	Enr.	Cumm. GPA	% of Orig.	Deg. Awd.	Enrolled	Cumm. GPA	% of Orig.	Degrees Awd.				
FY 99-00	32				0				458							
FY 00-01	25	2.4	78.1%	0	0	0	0.0%	0	310	2.69%	67.7%	0				
FY 01-02	23	2.6	71.9%	0	0	0	0.0%	0	267	2.83%	58.3%	5				
FY 02-03	24	2.58	75.0%	7	0	0	0.0%	0	248	2.88%	54.1%	101				
FY 03-04	18	2.51	56.3%	10	0	0	0.0%	0	156	2.77%	34.1%	81				
FY 04-05	8	2.62	25.0%	5	0	0	0.0%	0	81	2.83%	17.7%	34				
Total Degrees				22				0				221				
Percentage				68.8%				0.0%				48.3%				

Source: Office of Research &amp; Planning, IHL

\* FY 2005-06 data unavailable as of publication date

Date : August 2006

**DELTA STATE UNIVERSITY**  
**RETENTION OF FIRST-TIME ENTERING FRESHMEN**  
**(ALL FIRST-TIME FRESHMEN)**  
**FALL 1999-2005**

YEAR ENTERED	1999		2000		2001		2002		2003		2004		2005	
Retention & Graduation Rates	#	%	#	%	#	%	#	%	#	%	#	%	#	%
All first-time entering freshmen	465	100%	471	100%	430	100%	358	100%	330	100%	385	100%	398	100%
Average ACT Score	19.7		19.7		20.4		20.2		20.4		20.4		20.3	
2nd Year - Returned	314	68%	331	70%	294	68%	253	71%	239	72%	272	71%		
3rd Year - Returned	273	59%	287	61%	243	57%	205	57%	195	59%				
<b>Degrees thru 3 years</b>	<b>5</b>	1%	<b>3</b>	1%	<b>6</b>	1%	<b>2</b>	1%						
4th Year - Returned	253	54%	272	58%	217	50%	186	52%						
<b>Degrees thru 4 years</b>	<b>107</b>	23%	<b>111</b>	24%	<b>83</b>	19%								
5th Year - Returned	137	29%	132	28%	123	29%								
<b>Degrees thru 5 years</b>	<b>188</b>	40%	<b>198</b>	42%										
6th Year - Returned	61	13%	50	11%										
<b>Degrees thru 6 years</b>	<b>223</b>	48%												
7th Year - Returned	30	6%												

Source: Office of Institutional Research and Planning  
Date : July 2006

**DELTA STATE UNIVERSITY**  
**RETENTION OF FIRST-TIME ENTERING FRESHMEN**  
**(WHITE FIRST-TIME FRESHMEN)**  
**FALL 1999-2005**

YEAR ENTERED	1999		2000		2001		2002		2003		2004		2005	
Retention & Graduation Rates	#	%	#	%	#	%	#	%	#	%	#	%	#	%
White first-time entering freshmen	341	100%	331	100%	308	100%	252	100%	200	100%	259	100%	242	100%
Average ACT Score	20.4		20.4		21.2		21.1		21.2		21.6		21.3	
2nd Year - Returned	226	66%	244	74%	213	69%	188	75%	151	76%	183	71%		
3rd Year - Returned	198	58%	207	63%	182	59%	149	59%	125	63%				
<b>Degrees thru 3 years</b>	<b>5</b>	1%	<b>3</b>	1%	<b>5</b>	2%	<b>2</b>	1%						
4th Year - Returned	183	54%	194	59%	168	55%	133	53%						
<b>Degrees thru 4 years</b>	<b>82</b>	24%	<b>87</b>	26%	<b>72</b>	23%								
5th Year - Returned	101	30%	93	28%	100	32%								
<b>Degrees thru 5 years</b>	<b>146</b>	43%	<b>152</b>	46%										
6th Year - Returned	43	13%	31	9%										
<b>Degrees thru 6 years</b>	<b>169</b>	50%												
7th Year - Returned	18	5%												

Source: Office of Institutional Research & Planning  
Date : July 2006



**DELTA STATE UNIVERSITY**  
**RETENTION OF FIRST-TIME ENTERING FRESHMEN**  
**(BLACK FIRST-TIME FRESHMEN)**  
**FALL 1999-2005**

YEAR ENTERED	1999		2000		2001		2002		2003		2004		2005	
Retention & Graduation Rates	#	%	#	%	#	%	#	%	#	%	#	%	#	%
Black first-time entering freshmen	123	100%	128	100%	119	100%	104	100%	116	100%	118	100%	147	100%
Average ACT Score	17.8		18		18.4		18.1		18.2		17.7		18.5	
2nd Year - Returned	87	71%	85	66%	78	66%	63	61%	80	69%	84	71%		
3rd Year - Returned	74	60%	78	61%	58	49%	55	53%	64	55%				
<b>Degrees thru 3 years</b>	<b>0</b>	<b>0%</b>	<b>0</b>	<b>0%</b>	<b>0</b>	<b>0%</b>	<b>0</b>	<b>0%</b>						
4th Year - Returned	70	57%	76	59%	47	39%	52	50%						
<b>Degrees thru 4 years</b>	<b>26</b>	<b>21%</b>	<b>23</b>	<b>18%</b>	<b>9</b>	<b>8%</b>								
5th Year - Returned	36	29%	38	30%	35	29%								
<b>Degrees thru 5 years</b>	<b>44</b>	<b>36%</b>	<b>45</b>	<b>35%</b>										
6th Year - Returned	18	15%	18	14%										
<b>Degrees thru 6 years</b>	<b>54</b>	<b>44%</b>												
7th Year - Returned	12	10%												

Source: Office of Institutional Research & Planning  
Date : July 2006

# Credit Hours



Delta State University

**DELTA STATE UNIVERSITY**  
**ON- AND OFF-CAMPUS STUDENT CREDIT HOURS SUMMARY BY SEMESTER**  
**2005-06**

SEMESTER	Summer 2005		Fall 2005		Spring 2006		TOTAL	
	#	%	#	%	#	%	#	%
UNIVERSITY TOTAL	11,059	100.0%	46,127	100.0%	42,364	100.0%	99,550	100.0%
ARTS & SCIENCES	3,966	35.9%	23,150	50.2%	20,058	47.3%	47,175	47.4%
Art	201	5.1%	1,743	7.5%	1,756	8.8%	3,700	7.8%
Biological & Physical Sciences	1,056	26.6%	4,567	19.7%	3,810	19.0%	9,434	20.0%
Delta Music Institute	0	0.0%	135	0.6%	112	0.6%	247	0.5%
History	348	8.8%	1,587	6.9%	1,512	7.5%	3,447	7.3%
Interdisciplinary Studies	27	0.7%	51	0.2%	66	0.3%	144	0.3%
Languages & Literature	839	21.2%	5,293	22.9%	4,231	21.1%	10,364	22.0%
Library Services	0	0.0%	1	0.0%	8	0.0%	9	0.0%
Mathematics	354	8.9%	2,357	10.2%	1,797	9.0%	4,508	9.6%
Military Science	0	0.0%	4	0.0%	0	0.0%	4	0.0%
Music	23	0.6%	1,580	6.8%	1,306	6.5%	2,909	6.2%
Rural and Regional Studies	0	0.0%	0	0.0%	84	0.4%	84	0.2%
Social Sciences	848	21.4%	3,798	16.4%	3,222	16.1%	7,869	16.7%
Social Work	234	5.9%	942	4.1%	1,167	5.8%	2,343	5.0%
Speech and Hearing Sciences	36	0.9%	1,092	4.7%	987	4.9%	2,115	4.5%
BUSINESS	2,044	18.5%	9,893	21.4%	9,173	21.7%	21,111	21.2%
Accounting, CIS & FIN	747	36.5%	4,344	43.9%	3,783	41.2%	8,875	42.0%
Commercial Aviation	150	7.3%	1,064	10.8%	1,064	11.6%	2,278	10.8%
MGT, MKT, & BED	1,147	56.1%	4,485	45.3%	4,326	47.2%	9,959	47.2%
EDUCATION	4,769	43.1%	12,091	26.2%	11,550	27.3%	28,411	28.5%
Counselor Education & PSY	888	18.6%	2,780	23.0%	2,595	22.5%	6,264	22.0%
Family & Consumer Science	152	3.2%	1,700	14.1%	1,882	16.3%	3,734	13.1%
H P E & R	645	13.5%	3,039	25.1%	2,813	24.4%	6,498	22.9%
Rural School Leadership	819	17.2%	809	6.7%	898	7.8%	2,526	8.9%
Teacher Education	2,265	47.5%	3,763	31.1%	3,362	29.1%	9,391	33.1%
NURSING	280	2.5%	993	2.2%	1,583	3.7%	2,856	2.9%
Nursing	280	100.0%	993	100.0%	1,583	100.0%	2,856	100.0%

Source: Institutional Research and Planning  
Date : June 2006

Note: Departments are reported as % of Colleges/School.  
Colleges/School are reported as a % of the University Total.

**DELTA STATE UNIVERSITY**  
**ON-CAMPUS STUDENT CREDIT HOURS SUMMARY BY SEMESTER**  
**2005-06**

SEMESTER	Summer 2005		Fall 2005		Spring 2006		TOTAL	
	#	%	#	%	#	%	#	%
UNIVERSITY TOTAL	10,107	10.5%	44,868	46.6%	41,330	42.9%	96,305	100.0%
ARTS & SCIENCES	3,918	38.8%	22,838	50.9%	19,872	48.1%	46,628	48.4%
Art	201	5.1%	1,743	7.6%	1,756	8.8%	3,700	7.9%
Biological & Physical Sciences	1,020	26.0%	4,519	19.8%	3,810	19.2%	9,349	20.1%
Delta Music Institute	0	0.0%	135	0.6%	112	0.6%	247	0.5%
History	348	8.9%	1,500	6.6%	1,449	7.3%	3,297	7.1%
Interdisciplinary Studies	27	0.7%	51	0.2%	66	0.3%	144	0.3%
Languages & Literature	839	21.4%	5,155	22.6%	4,153	20.9%	10,147	21.8%
Library Services	0	0.0%	1	0.0%	8	0.0%	9	0.0%
Mathematics	354	9.0%	2,357	10.3%	1,785	9.0%	4,496	9.6%
Military Science	0	0.0%	4	0.0%	0	0.0%	4	0.0%
Music	23	0.6%	1,580	6.9%	1,306	6.6%	2,909	6.2%
Rural and Regional Studies	0	0.0%	0	0.0%	84	0.4%	84	0.2%
Social Sciences	836	21.3%	3,759	16.5%	3,189	16.0%	7,784	16.7%
Social Work	234	6.0%	942	4.1%	1,167	5.9%	2,343	5.0%
Speech and Hearing Sciences	36	0.9%	1,092	4.8%	987	5.0%	2,115	4.5%
BUSINESS	1,672	16.5%	9,410	21.0%	8,762	21.2%	19,844	20.6%
Accounting, CIS & FIN	636	38.0%	4,233	45.0%	3,690	42.1%	8,559	43.1%
Commercial Aviation	150	9.0%	1,064	11.3%	1,064	12.1%	2,278	11.5%
Mgt., Mkt., & BED	886	53.0%	4,113	43.7%	4,008	45.7%	9,007	45.4%
EDUCATION	4,442	43.9%	11,707	26.1%	11,217	27.1%	27,366	28.4%
Counselor Ed & Psychology	888	20.0%	2,729	23.3%	2,517	22.4%	6,134	22.4%
Family & Consumer Science	152	3.4%	1,700	14.5%	1,882	16.8%	3,734	13.6%
H P E & R	645	14.5%	3,009	25.7%	2,729	24.3%	6,383	23.3%
Rural School Leadership	591	13.3%	770	6.6%	832	7.4%	2,193	8.0%
Teacher Education	2,166	48.8%	3,499	29.9%	3,257	29.0%	8,922	32.6%
NURSING	75	0.7%	913	2.0%	1,479	3.6%	2,467	2.6%
Nursing	75	100.0%	913	100.0%	1,479	100.0%	2,467	100.0%

Source: Institutional Research and Planning

Date : June 2006

Note: Departments are reported as % of Colleges/School.

Colleges/School are reported as a % of the University Total.

**DELTA STATE UNIVERSITY**  
**OFF-CAMPUS CREDIT HOURS SUMMARY BY SEMESTER**  
**2005-06**

SEMESTER	Summer 2005		Fall 2005		Spring 2006		TOTAL	
	#	%	#	%	#	%	#	%
UNIVERSITY TOTAL	952	100.0%	1,259	100.0%	1,034	100.0%	3,245	100.0%
ARTS & SCIENCES	48	5.0%	312	24.8%	186	18.0%	546	16.8%
Art	0	0.0%	0	0.0%	0	0.0%	0	0.0%
Biological & Physical Sciences	36	75.0%	48	15.4%	0	0.0%	84	15.4%
History	0	0.0%	87	27.9%	63	33.9%	150	27.5%
Languages & Literature	0	0.0%	138	44.2%	78	41.9%	216	39.6%
Mathematics	0	0.0%	0	0.0%	12	6.5%	12	2.2%
Social Sciences	12	25.0%	39	12.5%	33	17.7%	84	15.4%
BUSINESS	372	39.1%	483	38.4%	411	39.7%	1,266	39.0%
Accounting, CIS & FIN	111	29.8%	111	23.0%	93	22.6%	315	76.6%
MGT, MKT & BED	261	70.2%	372	77.0%	318	77.4%	951	231.4%
EDUCATION	327	34.3%	384	30.5%	333	32.2%	1,044	32.2%
Counselor Education & PSY	0	0.0%	51	13.3%	78	23.4%	129	12.4%
H P E & R	0	0.0%	30	7.8%	84	25.2%	114	10.9%
Rural School Leadership	228	69.7%	39	10.2%	66	19.8%	333	31.9%
Teacher Education	99	30.3%	264	68.8%	105	31.5%	468	44.8%
NURSING	205	21.5%	80	6.4%	104	10.1%	389	12.0%
Nursing	205	100.0%	80	100.0%	104	100.0%	389	100.0%

Source: Institutional Research and Planning

Note: Departments are reported as % of Colleges/School.

Date : June 2006

Colleges/School are reported as a % of the University Total.

**DELTA STATE UNIVERSITY**  
**ON-CAMPUS STUDENT CREDIT HOURS SUMMARY BY LEVEL**  
**FALL 2005**

LEVEL	LOWER		UPPER		GRADUATE		TOTAL	
	#	%	#	%	#	%	#	%
UNIVERSITY TOTAL	20,465	45.6%	19,940	44.4%	4,463	9.9%	44,868	100.0%
ARTS & SCIENCES	14,247	62.4%	7,837	34.3%	754	3.3%	22,838	50.9%
Art	972	55.8%	768	44.1%	3	0.2%	1,743	7.6%
Biological & Physical Sciences	3,116	69.0%	1,232	27.3%	171	3.8%	4,519	19.8%
Delta Music Institute	66	48.9%	69	51.1%	0	0.0%	135	0.6%
History	1,287	85.8%	183	12.2%	30	2.0%	1,500	6.6%
Interdisciplinary Studies	0	0.0%	51	100.0%	0	0.0%	51	0.2%
Languages & Literature	4,010	77.8%	1,071	20.8%	74	1.4%	5,155	22.6%
Library Services	1	100.0%	0	0.0%	0	0.0%	1	0.0%
Mathematics	2,042	86.6%	315	13.4%	0	0.0%	2,357	10.3%
Military Science	0	0.0%	4	100.0%	0	0.0%	4	0.0%
Music	1,034	65.4%	544	34.4%	2	0.1%	1,580	6.9%
Social Sciences	1,485	39.5%	1,800	47.9%	474	12.6%	3,759	16.5%
Social Work	234	24.8%	708	75.2%	0	0.0%	942	4.1%
Speech and Hearing Sciences	0	0.0%	1,092	100.0%	0	0.0%	1,092	4.8%
BUSINESS	3,387	36.0%	5,273	56.0%	750	8.0%	9,410	21.0%
Accounting, CIS, & FIN	1,488	35.2%	2,472	58.4%	273	6.4%	4,233	45.0%
Commercial Aviation	534	50.2%	359	33.7%	171	16.1%	1,064	11.3%
Mgt., Mkt., & BED	1,365	33.2%	2,442	59.4%	306	7.4%	4,113	43.7%
EDUCATION	2,831	24.2%	6,282	53.7%	2,594	22.2%	11,707	26.1%
Counselor Ed & Psychology	1,053	38.6%	800	29.3%	876	32.1%	2,729	23.3%
Family & Consumer Science	525	30.9%	1,175	69.1%	0	0.0%	1,700	14.5%
H P E & R	1,046	34.8%	1,810	60.2%	153	5.1%	3,009	25.7%
Rural School Leadership	0	0.0%	0	0.0%	770	100.0%	770	6.6%
Teacher Education	207	5.9%	2,497	71.4%	795	22.7%	3,499	29.9%
NURSING	0	0.0%	548	60.0%	365	40.0%	913	2.0%
Nursing	0	0.0%	548	60.0%	365	40.0%	913	100.0%

Source: Institutional Research and Planning  
Date : March 2006

Note: Levels are reported as a % of the Department Totals.

**DELTA STATE UNIVERSITY**  
**ON-CAMPUS STUDENT CREDIT HOUR SUMMARY BY DISCIPLINE**  
**FALL 2005**

LEVEL	LOWER		UPPER		GRADUATE		TOTAL	
	#	%	#	%	#	%	#	%
Univerisity Total	20,465	45.6%	19,940	44.4%	4,463	9.9%	44,868	100.0%
Arts & Sciences	14,247	62.4%	7,837	34.3%	754	3.3%	22,838	50.9%
AMU	155	72.1%	58	27.0%	2	0.9%	215	0.9%
ANT	69	100.0%	0	0.0%	0	0.0%	69	0.3%
ART	972	55.8%	768	44.1%	3	0.2%	1,743	7.6%
BIO	1,731	64.1%	889	32.9%	81	3.0%	2,701	11.8%
BIS	0	0.0%	51	100.0%	0	0.0%	51	0.2%
CHE	647	64.2%	325	32.2%	36	3.6%	1,008	4.4%
COD	0	0.0%	0	0.0%	129	100.0%	129	0.6%
CRJ	0	0.0%	711	74.8%	240	25.2%	951	4.2%
DMI	0	0.0%	51	100.0%	0	0.0%	51	0.2%
ENG	2,694	73.5%	897	24.5%	74	2.0%	3,665	16.0%
FRE	99	76.7%	30	23.3%	0	0.0%	129	0.6%
FSC	0	0.0%	93	96.9%	3	3.1%	96	0.4%
GEO	330	56.4%	246	42.1%	9	1.5%	585	2.6%
GER	45	100.0%	0	0.0%	0	0.0%	45	0.2%
GIS	103	65.6%	0	0.0%	54	34.4%	157	0.7%
GST	292	100.0%	0	0.0%	0	0.0%	292	1.3%
HIS	1,287	85.8%	183	12.2%	30	2.0%	1,500	6.6%
JOU	84	62.2%	51	37.8%	0	0.0%	135	0.6%
LIB	1	100.0%	0	0.0%	0	0.0%	1	0.0%
MAT	2,042	86.6%	315	13.4%	0	0.0%	2,357	10.3%
MSC	0	0.0%	4	100.0%	0	0.0%	4	0.0%
MUS	879	64.4%	486	35.6%	0	0.0%	1,365	6.0%
PHI	81	61.4%	51	38.6%	0	0.0%	132	0.6%
PHY	635	98.1%	12	1.9%	0	0.0%	647	2.8%
PLS	0	0.0%	42	100.0%	0	0.0%	42	0.2%
PSC	276	50.8%	252	46.4%	15	2.8%	543	2.4%
REM	0	0.0%	6	100.0%	0	0.0%	6	0.0%
SHS	0	0.0%	1,092	100.0%	0	0.0%	1,092	4.8%
SOC	810	67.2%	318	26.4%	78	6.5%	1,206	5.3%
SPA	213	91.0%	21	9.0%	0	0.0%	234	1.0%
SPE	474	95.8%	21	4.2%	0	0.0%	495	2.2%
SRT	66	78.6%	18	21.4%	0	0.0%	84	0.4%
SSC	0	0.0%	138	100.0%	0	0.0%	138	0.6%
SWO	234	24.8%	708	75.2%	0	0.0%	942	4.1%
THE	28	100.0%	0	0.0%	0	0.0%	28	0.1%

Source : IHL Statistical Report

Note: Levels are reported as a % of the Department Totals.

Date : April 2006

Page 1 of 2

**DELTA STATE UNIVERSITY**  
**ON-CAMPUS STUDENT CREDIT HOUR SUMMARY BY DISCIPLINE**  
**FALL 2005**

LEVEL	LOWER		UPPER		GRADUATE		TOTAL	
	#	%	#	%	#	%	#	%
Business	3,387	36.0%	5,273	56.0%	750	8.0%	9,410	21.0%
ACC	411	37.7%	618	56.7%	60	5.5%	1,089	11.6%
BED	0	0.0%	0	0.0%	0	0.0%	0	0
CAV	534	50.2%	359	33.7%	171	16.1%	1,064	11.3%
CIS	1,077	52.5%	891	43.4%	84	4.1%	2,052	21.8%
ECO	675	82.1%	141	17.2%	6	0.7%	822	8.7%
FIN	0	0.0%	486	82.7%	102	17.3%	588	6.2%
GBA	336	99.1%	3	0.9%	0	0.0%	339	3.6%
HSM	0	0.0%	81	100.0%	0	0.0%	81	0.9%
IRR	0	0.0%	477	94.6%	27	5.4%	504	5.4%
MGT	192	10.9%	1,404	80.0%	159	9.1%	1,755	18.7%
MKT	0	0.0%	777	84.6%	141	15.4%	918	9.8%
OAD	162	81.8%	36	18.2%	0	0.0%	198	2.1%
Education	2,831	24.2%	6,282	53.7%	2,594	22.2%	11,707	26.1%
AED	0	0.0%	0	0.0%	366	100.0%	366	3.1%
CED	210	22.7%	0	0.0%	714	77.3%	924	7.9%
CEL	0	0.0%	1,161	83.8%	225	16.2%	1,386	11.8%
CML	0	0.0%	87	64.4%	48	35.6%	135	1.2%
CRD	207	64.5%	114	35.5%	0	0.0%	321	2.7%
CSD	0	0.0%	0	0.0%	45	100.0%	45	0.4%
CSP	0	0.0%	618	72.8%	231	27.2%	849	7.3%
CUR	0	0.0%	517	67.8%	246	32.2%	763	6.5%
EDL	0	0.0%	0	0.0%	140	100.0%	140	1.2%
ELR	0	0.0%	0	0.0%	264	100.0%	264	2.3%
EPY	0	0.0%	192	55.2%	156	44.8%	348	3.0%
FCS	525	30.9%	1,175	69.1%	0	0.0%	1,700	14.5%
HSE	376	64.3%	173	29.6%	36	6.2%	585	5.0%
PER	670	27.6%	1,637	67.5%	117	4.8%	2,424	20.7%
PSY	843	57.9%	608	41.7%	6	0.4%	1,457	12.4%
Nursing	0	0.0%	548	60.0%	365	40.0%	913	2.0%
NUR	0	0.0%	548	60.0%	365	40.0%	913	100.0%

Source : IHL Statistical Report

Note: Levels are reported as a % of the Department Totals.

Date : April 2006

Page 2 of 2



**DELTA STATE UNIVERSITY**  
**ON-CAMPUS STUDENT CREDIT HOURS SUMMARY BY LEVEL**  
**TWO-YEAR COMPARISON**

LEVEL	Fall 2004				Fall 2005			
	Lower	Upper	Grad.	Total	Lower	Upper	Grad.	Total
<b>UNIVERSITY TOTAL</b>	20,036	19,479	3,967	43,482	20,465	19,940	4,463	44,868
<b>ARTS &amp; SCIENCES</b>	13,752	7,331	670	21,753	14,247	7,837	754	22,838
Art	939	834	12	1,785	972	768	3	1,743
Biological & Physical Sciences	3,120	1,106	84	4,310	3,116	1,232	171	4,519
Delta Music Institute	0	0	0	0	66	69	0	135
History	1,245	120	42	1,407	1,287	183	30	1,500
Interdisciplinary Studies	0	0	0	0	0	51	0	51
Languages & Literature	4,015	954	39	5,008	4,010	1,071	74	5,155
Library Services	13	0	0	13	1	0	0	1
Mathematics	1,920	279	0	2,199	2,042	315	0	2,357
Military Science	0	4	0	4	0	4	0	4
Music	823	601	1	1,425	1,034	544	2	1,580
Social Sciences	1,377	1,888	492	3,757	1,485	1,800	474	3,759
Social Work	273	741	0	1,014	234	708	0	942
Speech and Hearing Sciences	27	804	0	831	0	1,092	0	1,092
<b>BUSINESS</b>	3,399	5,477	783	9,659	3,387	5,273	750	9,410
Accounting, CIS, & FIN	1,518	2,622	273	4,413	1,488	2,472	273	4,233
Commercial Aviation	357	468	132	957	534	359	171	1,064
Mgt., Mkt., & BED	1,524	2,387	378	4,289	1,365	2,442	306	4,113
<b>EDUCATION</b>	2,885	6,210	2,202	11,297	2,831	6,282	2,594	11,707
Counselor Ed & PSY	1,095	839	726	2,660	1,053	800	876	2,729
C & I, Leadership & Research *	180	2,832	1,308	4,320	-	-	-	-
Family & Consumer Science	336	1,007	0	1,343	525	1,175	0	1,700
H P E & R	1,274	1,532	168	2,974	1,046	1,810	153	3,009
Rural School Leadership	-	-	-	-	0	0	770	770
Teacher Education	-	-	-	-	207	2,497	795	3,499
<b>NURSING</b>	0	461	312	773	0	548	365	913
Nursing	0	461	312	773	0	548	365	913

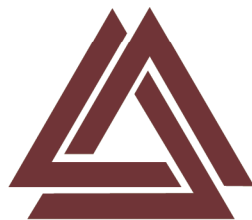
Source: IHL Statistical Report  
Date : March 2006

\* In Fall 2005 Curriculum & Instruction was divided into  
two separate departments - Rural School Leadership  
and Teacher Education.

<p style="text-align: center;"><b>DELTA STATE UNIVERSITY</b>  <b>ON-CAMPUS STUDENT CREDIT HOURS SUMMARY BY COLLEGE/SCHOOL &amp; DEPARTMENT</b>  <b>5-YEAR TREND</b></p>												
FALL SEMESTER	2001		2002		2003		2004		2005		5-Yr. Change	
	#	%	#	%	#	%	#	%	#	%	#	%
<b>UNIVERSITY TOTAL</b>	45549	100.0%	45166	100.0%	42562	100.0%	43482	100.0%	44868	100.0%	1677	3.7%
<b>ARTS &amp; SCIENCES</b>	21950	48.2%	21489	47.6%	20558	48.3%	21753	50.0%	22838	50.9%	389	1.8%
Aerospace Studies	32	0.1%	25	0.1%	-	-	-	-	-	-	-	-
Art	2055	9.4%	1981	9.2%	1923	9.4%	1785	8.2%	1743	7.6%	-312	-15.2%
Biological Sciences*	2606	11.9%	2146	10.0%	2224	10.8%	-	-	-	-	-	-
Biological & Physical Sci. *	-	-	-	-	-	-	4310	19.8%	4519	19.8%	-	-
Delta Music Institute	-	-	-	-	-	-	-	-	135	0.6%	-	-
History	1908	8.7%	1641	7.6%	1494	7.3%	1407	6.5%	1500	6.6%	-408	-21.4%
Interdisciplinary Studies	-	-	-	-	-	-	-	-	51	0.2%	-	-
Languages and Literature	5653	25.8%	5277	24.6%	4936	24.0%	5008	23.0%	5155	22.6%	-498	-8.8%
Library Sciences	-	-	-	-	-	-	13	0.1%	1	0.0%	-	-
Mathematics	2308	10.5%	2321	10.8%	2093	10.2%	2199	10.1%	2357	10.3%	49	2.1%
Military Science	-	-	-	-	-	-	4	0.0%	4	0.0%	-	-
Music	1367	6.2%	1245	5.8%	1167	5.7%	1425	6.6%	1580	6.9%	213	15.6%
Physical Sciences*	1573	7.2%	1957	9.1%	2002	9.7%	-	-	-	-	-	-
Social Sciences	3196	14.6%	3462	16.1%	3279	15.9%	3757	17.3%	3759	16.5%	563	17.6%
Social Work	795	3.6%	900	4.2%	804	3.9%	1014	4.7%	942	4.1%	147	18.5%
Speech & Hearing Sciences	457	2.1%	534	2.5%	636	3.1%	831	3.8%	1092	4.8%	635	138.9%
<b>BUSINESS</b>	11430	25.1%	12134	26.9%	10075	23.7%	9659	22.2%	9410	21.0%	1169	10.2%
Accounting, CIS & FIN**	3822	33.4%	3832	31.6%	4311	42.8%	4413	45.7%	4233	45.0%	411	10.8%
Commercial Aviation	1323	11.6%	1465	12.1%	1108	11.0%	957	9.9%	1064	11.3%	-259	-19.6%
Economics & Finance	2949	25.8%	2925	24.1%	-	-	-	-	-	-	-	-
Mgt., Mkt., OAD, & BED**	3096	27.1%	3561	29.3%	4656	46.2%	4289	44.4%	4113	43.7%	1017	32.8%
Executive BBA***	51	0.4%	60	0.5%	-	-	-	-	-	-	-	-
Executive MBA***	189	1.7%	291	2.4%	-	-	-	-	-	-	-	-
<b>EDUCATION</b>	11148	24.5%	10891	24.1%	11294	26.5%	11297	26.0%	11707	26.1%	227	2.0%
Behavioral Sciences	1667	15.0%	1595	14.6%	2462	21.8%	-	-	-	-	-	-
Counselor Ed & PSY*****	-	-	-	-	-	-	2660	23.5%	2729	23.3%	-	-
C & I, Leader., & Res.*****	3538	31.7%	3760	34.5%	4596	40.7%	4320	38.2%	-	-	-	-
Family & Consumer Science	1057	9.5%	1052	9.7%	1233	10.9%	1343	11.9%	1700	14.5%	643	60.8%
H P E & R	3425	30.7%	2933	26.9%	3003	26.6%	2974	26.3%	3009	25.7%	-416	-12.1%
Psychology	1461	13.1%	1551	14.2%	-	-	-	-	-	-	-	-
Rural School Leadership*****	-	-	-	-	-	-	-	-	770	6.6%	-	-
Teacher Education*****	-	-	-	-	-	-	-	-	3499	29.9%	-	-
<b>NURSING</b>	1021	2.2%	652	1.4%	635	1.5%	773	1.8%	913	2.0%	-108	-10.6%
Nursing	1021	100.0%	652	100.0%	635	100.0%	773	100.0%	913	100.0%	-108	-10.6%
<p>Note: Departments are reported as % of Colleges/School. Colleges/School are reported as % of the University Total.</p> <p>* Biological and Physical Sciences combined in Summer 2003</p> <p>** Economics combined with Mgt, Mkt, OAD and BED in Summer 2003. Finance and IRR combined with Accounting and CIS in Summer 2003.</p> <p>*** Executive courses were taught on campus through the Spring 2003 semester. Beginning in the Summer of 2003, these courses relocated to the Greenville campus and are reported as off-campus.</p> <p>**** Psychology combined with Behavioral Sciences in Summer 2003. Behavioral Sciences was renamed to Counselor Ed &amp; PSY in Summer 2004.</p> <p>***** In Fall 2005 Curriculum &amp; Instruction was divided into two separate departments Rural School Leadership and Teacher Education.</p>												

Source: IHL Statistical Report  
Date : March 2006

# Grades



Delta State University

**DELTA STATE UNIVERSITY**  
**AVERAGE OF GRADES AWARDED BY DISCIPLINE**  
**FALL 2005**

DISCIPLINE	COLLEGE/SCHOOL	# ENROLLED IN COURSES	AVERAGE G.P.A
	<b>UNIVERSITY AVERAGE</b>	11,812	2.53
	<b>ARTS &amp; SCIENCES</b>	6,408	2.54
AMU	Applied Music	8	4.00
ANT	Anthropology	19	3.05
ART	Art	554	2.90
BIO	Biology	705	2.49
BIS	Interdisciplinary Studies	14	2.64
CHE	Chemistry	200	2.50
CRJ	Criminal Justice	232	2.31
ENG	English	1103	2.14
FRE	French	42	3.00
FSC	Forensic Science	31	3.32
GEO	Geography	194	2.66
GER	German	15	1.87
GIS	Geographic Information Systems	20	3.00
HIS	History	496	1.32
JOU	Journalism	36	3.06
MAT	Mathematics	691	1.77
MUS	Music	274	2.91
PHI	Philosophy	44	2.50
PHY	Physical Science	201	2.52
PLS	Paralegal Science	20	3.25
PSC	Political Science	166	2.41
REM	Remote Sensing	1	0.00
SHS	Speech & Hearing Sciences	363	2.88
SOC	Sociology	372	2.38
SPA	Spanish	77	2.53
SPE	Speech	165	2.44
SSC	Social Science	45	2.64
SWO	Social Work	313	3.23
THE	Theatre	7	1.86

Source: Institutional Research & Planning  
Date : March 2006

\*Grades Averaged are computed on  
grades of A,B,C,D & F for undergraduate  
classes of 3 or more hours.

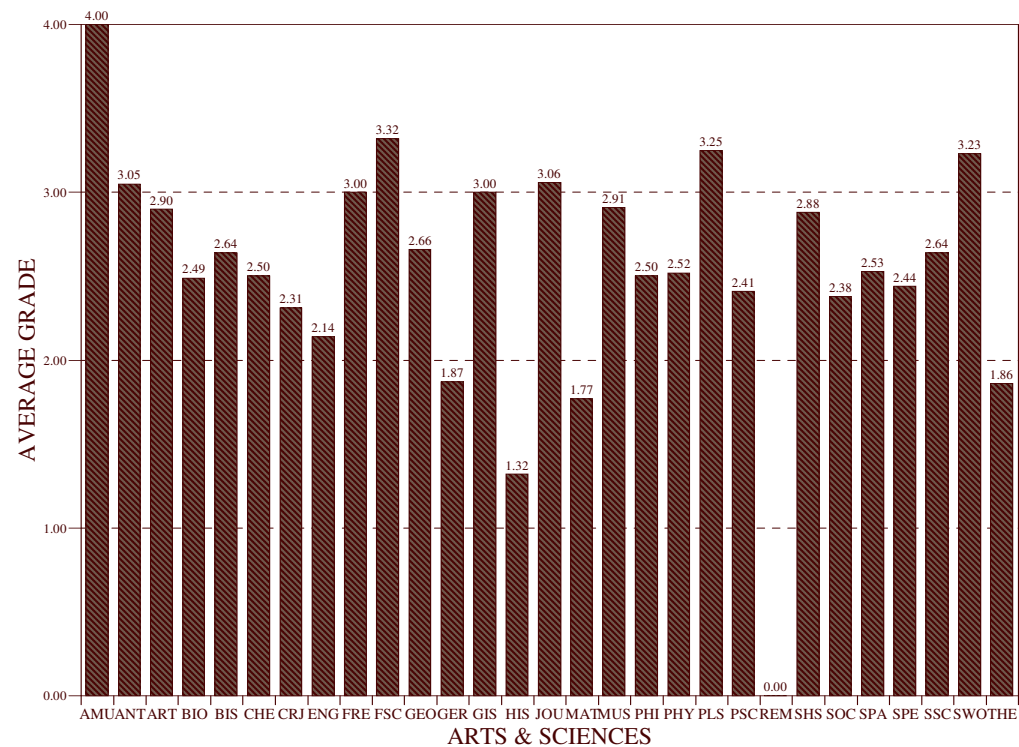
**DELTA STATE UNIVERSITY**  
**AVERAGE OF GRADES AWARDED BY DISCIPLINE**  
**FALL 2005**

DISCIPLINE	COLLEGE/SCHOOL	# ENROLLED IN COURSES	AVERAGE G.P.A.
	<b><i>BUSINESS</i></b>	<b>2,863</b>	<b>2.49</b>
ACC	Accounting	341	1.78
CAV	Commercial Aviation	243	2.91
CIS	Computer Information Systems	663	2.63
ECO	Economics	269	1.90
FIN	Finance	166	2.43
GBA	General Business	110	2.40
HSM	Hospitality Services Management	27	3.33
IRR	Insurance & Real Estate	163	2.56
MGT	Management	566	2.91
MKT	Marketing	256	2.31
OAD	Office Administration	59	2.20
	<b><i>EDUCATION</i></b>	<b>2,431</b>	<b>2.49</b>
CED	Counseling	4	0.00
CEL	Elementary Education	353	2.67
CML	Media- Library Science	41	2.68
CRD	Reading Education	47	2.15
CSP	Special Education	189	3.28
CUR	Curriculum	114	2.88
EPY	Educational Psychology	63	2.68
FCS	Family & Consumer Science	542	2.88
HSE	Health & Safety Education	160	2.88
PER	Physical Education & Recreation	420	2.78
PSY	Psychology	498	2.48
	<b><i>NURSING</i></b>	<b>110</b>	<b>3.11</b>
NUR	Nursing	110	3.11

Source: Institutional Research & Planning  
Date : March 2006

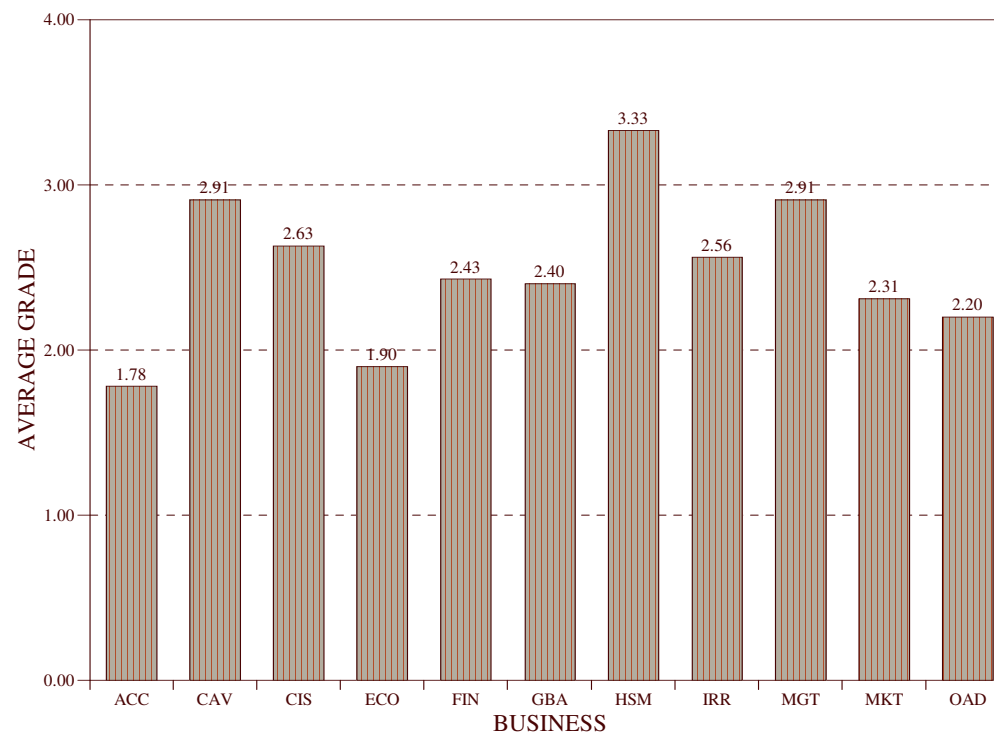
\*Grades Averaged are computed on  
grades of A,B,C,D & F for undergraduate  
classes of 3 or more hours.

**DELTA STATE UNIVERSITY**  
**AVERAGE OF GRADES AWARDED BY COURSE TYPE: ARTS & SCIENCES \***  
**FALL 2005**



Source: Institutional Research & Planning

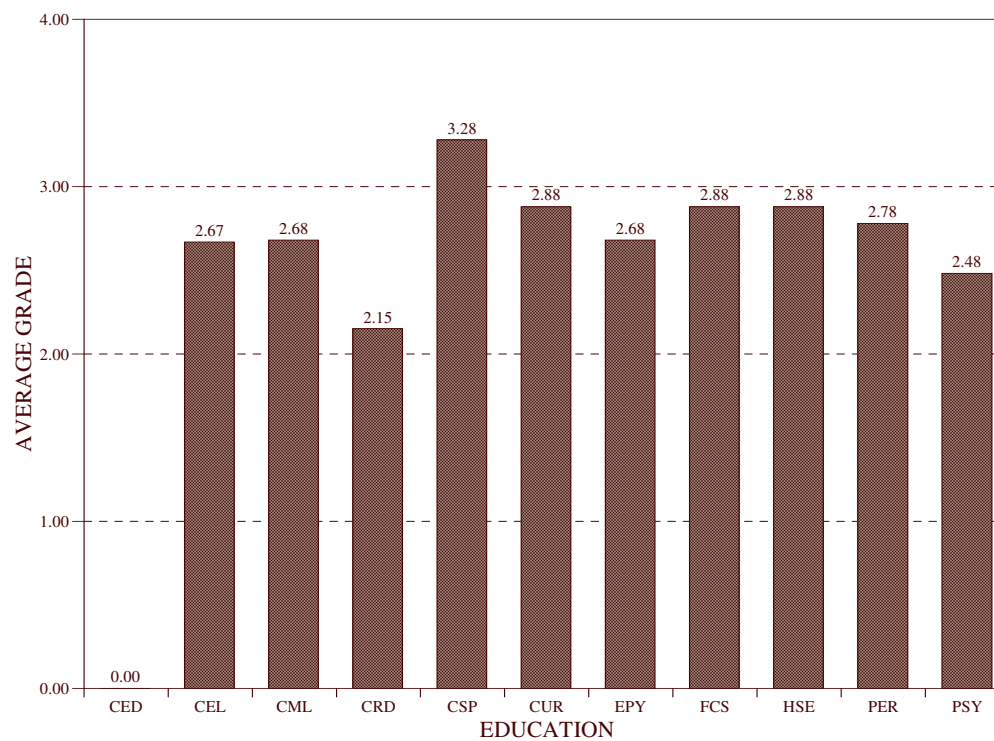
**DELTA STATE UNIVERSITY**  
**AVERAGE OF GRADES AWARDED BY COURSE TYPE: BUSINESS \***  
**FALL 2005**



Source: Institutional Research & Planning  
Date : March 2006

\* Represents undergraduate classes only.

**DELTA STATE UNIVERSITY**  
**AVERAGE OF GRADES AWARDED BY COURSE TYPE: EDUCATION \***  
**FALL 2005**



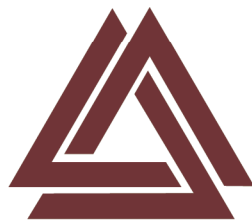
Source: Institutional Research & Planning

Date : March 2006

\* Represents undergraduate classes only.



# Miscellaneous



Delta State University

**DELTA STATE UNIVERSITY**  
**INTERCOLLEGIATE ATHLETICS**  
2005-06

TEAMS	Last Title / Championship	2005-06 Record		
		Wins	Losses	Ties
Baseball . . . . .	2005 NCAA South Central Region Champions 2004 Division II National Champions 2004 Gulf South Conference Champions	37	17	0
Basketball:				
Men's . . . . .	2006 - GSC Champions	30	2	0
Women's . . . . .	2006 GSC Champions	30	3	0
	2006 - 1st Place- GSC West Division			
Women's Cross-Country . . . . .	6th Place - GSC Cross Country Champions			
Golf . . . . .	2005 GSC Champions			
Soccer:				
Men's . . . . .		2	17	0
Women's . . . . .		0	19	0
Women's Softball . . . . .	2006 GSC West Division Champions	49	23	0
Tennis:				
Men's . . . . .	2003 - 3rd Place-GSC Tournament	11	11	0
Women's . . . . .	2003 - 4th Place-GSC Tournament	15	7	0
Swimming & Diving:				
Men's . . . . .	2003 New South Intercollegiate Swim Conference Champions			
Women's . . . . .	2003 NSISC Champions			
Football . . . . .	2000 NCAA Division II National Champions 2000 NCAA Division II South Region Champions 2000 GSC Tri-Champions	7	4	0

ATHLETIC FACILITIES	Seating Capacity
Parker Field (Football)	8,000
Walter Sillers Coliseum (Basketball)	3,150
Ferriss Field (Baseball)	1,500
DSU Aquatics Center(Swimming, Diving)	1,000
DSU Softball Field (Softball)	500
DSU Soccer Field (Soccer)	100

**GENERAL INFORMATION**

Division : National Collegiate Athletic Association (NCAA Division II)  
Conference: Gulf South Conference  
Nickname : Statesmen, Lady Statesmen  
Colors : Forest Green and White

Source: Office of Sports Information  
Date : June 2006

**DELTA STATE UNIVERSITY**  
**FINANCIAL AID SUMMARY**  
**2005-06**

	# of Students	Total	Fall 2005	Spring 2006	Summer 2006
<b>STUDENT LOANS</b>	<b>3445</b>	<b>\$13,962,702</b>	<b>6,182,623</b>	<b>\$6,722,875</b>	<b>\$1,057,204</b>
Stafford	2138	\$9,665,066	\$4,441,756	\$4,797,935	\$425,375
Unsubsidized Loan	1645	\$6,675,441	\$3,023,636	\$3,179,521	\$472,284
Plus	101	\$589,699	\$295,932	\$285,667	\$8,100
Perkins	200	\$391,725	\$62,355	\$68,105	\$261,265
<b>SCHOLARSHIPS</b>	<b>4728</b>	<b>\$10,152,420</b>	<b>\$2,392,841</b>	<b>\$2,254,292</b>	<b>\$201,689</b>
Pell Grant	1520	\$4,270,690	\$2,212,891	\$1,991,119	\$66,680
SEOG	229	\$136,150	\$42,200	\$35,050	\$58,900
LEAP	32	\$21,665	\$500	\$4,450	\$16,715
SLEAP	70	\$652,682	\$5,000	\$608,762	\$38,920
Federal Work Study	332	\$494,039	\$223,551	\$233,634	\$36,854
Academic Scholarship	375	\$1,084,007			
Athletic Scholarship	244	\$1,074,271			
Music Scholarship	162	\$381,461			
Other Service	348	\$990,556			
Dependent Scholarship	59	\$102,733			
Foundation	287	\$278,953			
State Scholarships	1040	\$1,290,675			
	# of Students	Total / Year	Average Award		
Total Accepted All Types:	3467	\$29,245,409	\$8,435		
Total Title IV Accepted:	2919	\$22,897,157	\$7,844		
Total Inst. Sources Accepted:	708	\$3,911,981	\$5,525		
Total State Scholarships:	1040	\$1,290,675	\$1,241		
Total Outside Sources:	753	\$1,145,596	\$1,521		

Sources: Student Financial Assistance

Date: July 2006

Note: Student figures are unduplicated

# Degrees Granted



Delta State University

**DELTA STATE UNIVERSITY**  
**DEGREES OFFERED**  
2005-06

***BACHELOR'S DEGREES***

BA	BACHELOR OF ARTS
BBA	BACHELOR OF BUSINESS ADMINISTRATION
BCA	BACHELOR OF COMMERCIAL AVIATION
BFA	BACHELOR OF FINE ARTS
BM	BACHELOR OF MUSIC
BME	BACHELOR OF MUSIC EDUCATION
BS	BACHELOR OF SCIENCE
BSCJ	BACHELOR OF SCIENCE IN CRIMINAL JUSTICE
BSE	BACHELOR OF SCIENCE IN EDUCATION
BSGS	BACHELOR OF SCIENCE IN GENERAL STUDIES
BSN	BACHELOR OF SCIENCE IN NURSING
BSW	BACHELOR OF SOCIAL WORK

***MASTER'S DEGREES***

MAT	MASTER OF SECONDARY TEACHER ED-ALTERNATE
MBA	MASTER OF BUSINESS ADMINISTRATION
MCA	MASTER OF COMMERCIAL AVIATION
MED	MASTER OF EDUCATION
MPA	MASTER OF PROFESSIONAL ACCOUNTANCY
MS	MASTER OF SCIENCE
MSN	MASTER OF SCIENCE IN NURSING
MSNS	MASTER OF SCIENCE IN NATURAL SCIENCES

***SPECIALIST'S DEGREES***

EDS	EDUCATIONAL SPECIALIST
-----	------------------------

***DOCTORAL DEGREES***

EDD	DOCTOR OF EDUCATION
-----	---------------------

Source: IHL Academic Program Inventory

Date : May 2006

**DELTA STATE UNIVERSITY**  
**ACADEMIC PROGRAM INVENTORY**  
**2005-06**

CIP	PROGRAMS	DEGREES	ACCREDITING BODY
52.0301	Accountancy	MPA	
52.0301	Accounting	BBA	ACBSP
50.0101	Art	BA	NASAD & NACATE
50.0101	Art	BFA	NASAD
51.0913	Athletic Training	BS	CAATE
49.0101	Aviation Management	BCA	AABI
26.0101	Biology	BS	
13.1399	Biology Education	BSE	NCATE
52.0201	Business Administration	MBA	ACBSP
40.0501	Chemistry	BS	ACS & NCATE
49.0104	Commercial Aviation	MCA	
44.0201	Community Development	MS	
52.1201	Computer Information Systems	BBA	ACBSP
13.1101	Counseling	MED	CACREP & NCATE
43.0104	Criminal Justice	BSCJ	
43.0104	Criminal Justice	MS	
13.0401	Educational Administration & Supervision	EDS	NCATE & ELCC
13.0401	Educational Administration & Supervision	MED	NCATE & ELCC
13.1202	Elementary Education	EDS	NCATE
13.1202	Elementary Education	MED	NCATE
13.1202	Elementary Education	BSE	NCATE & ACEI
23.0101	English	BA	
13.1305	English Education	BSE	NCATE
30.0101	Environmental Sciences	BS	
19.0101	Family and Consumer Science	BS	AAFCS & CADE
52.0801	Finance	BBA	ACBSP
49.0102	Flight Operations	BCA	AABI
52.0101	General Business	BBA	ACBSP
13.1314	Health, Physical Education & Recreation	BSE	NCATE & NASPE
13.1314	Health, Physical Education & Recreation	BS	
13.1314	Health, Physical Education & Recreation	MED	NCATE

Source: IHL Academic Program Inventory

Date : April 2006

**DELTA STATE UNIVERSITY**  
**ACADEMIC PROGRAM INVENTORY**  
2005-06

CIP	PROGRAMS	DEGREES	ACCREDITING BODY
54.0101	History	BSGS	NCATE & NASPE
54.0101	History	BA	
13.1399	History Education	MED	
52.0901	Hospitality Services Management	BBA	
52.1701	Insurance and Real Estate	BBA	ACBSP
30.9999	Interdisciplinary Studies	BS	
09.0401	Journalism	BA	
52.0201	Management	BBA	ACBSP
52.1401	Marketing	BBA	ACBSP
27.0101	Mathematics	BS	
13.1311	Mathematics Education	BSE	NCATE
16.0101	Modern Foreign Languages	BA	NCATE
50.0901	Music	BA	NASM
50.0901	Music	BM	NASM
13.1312	Music Education	BME	NASM & NCATE
30.0101	Natural Science	MSNS	NCATE
51.1601	Nursing	BSN	CCNE
51.1699	Nursing	MSN	IHL & CCNE
52.0204	Office Administration	BBA	ACBSP
45.1001	Political Science	BA	
13.0101	Professional Studies	EDD	NCATE
42.0101	Psychology	BA	
13.1205	Secondary Education	EDS	NCATE
13.1205	Secondary Education	MED	NCATE
45.0101	Social Science	BS	
13.1317	Social Science Education	MED	NCATE
13.1317	Social Science Education	BSE	NCATE
44.0701	Social Work	BSW	CSWE
13.1001	Special Education	MED	NCATE & CEC
13.1001	Special Education	BSE	NCATE & CEC
24.0102	Speech Communication & Theatre Arts	BA	
51.0204	Speech and Hearing Sciences	BS	
13.1206	Teaching (Alternate Route)	MAT	NCATE

Source: IHL Academic Program Inventory

Date : April 2006

**DELTA STATE UNIVERSITY**  
**DEGREES AWARDED: BY TYPE OF DEGREE**  
**5-YEAR TREND**

Degrees	2002*		2003*		2004*		2005*		2006*		5-YR Change	
	#	%	#	%	#	%	#	%	#	%	#	%
<b>Bachelor's</b>	<b>639</b>	<b>77.5%</b>	<b>596</b>	<b>76.0%</b>	<b>620</b>	<b>74.1%</b>	<b>584</b>	<b>70.8%</b>	<b>559</b>	<b>72.8%</b>	<b>-80</b>	<b>-12.5%</b>
BA	60	9.4%	44	7.4%	44	7.1%	29	5.0%	38	6.8%	-22	-36.7%
BBA	170	26.6%	192	32.2%	192	31.0%	180	30.8%	136	24.3%	-34	-20.0%
BCA	12	1.9%	24	4.0%	26	4.2%	24	4.1%	19	3.4%	7	58.3%
BFA	24	3.8%	19	3.2%	29	4.7%	30	5.1%	18	3.2%	-6	-25.0%
BM	2	0.3%	0	0.0%	2	0.3%	1	0.2%	2	0.4%	0	0.0%
BME	8	1.3%	13	2.2%	8	1.3%	9	1.5%	4	0.7%	-4	-50.0%
BS	93	14.6%	99	16.6%	114	18.4%	103	17.6%	141	25.2%	48	51.6%
BSCJ	25	3.9%	18	3.0%	27	4.4%	22	3.8%	28	5.0%	3	12.0%
BSE	120	18.8%	106	17.8%	107	17.3%	96	16.4%	94	16.8%	-26	-21.7%
BSGS	73	11.4%	37	6.2%	39	6.3%	35	6.0%	19	3.4%	-54	-74.0%
BSIS	-	-	-	-	-	-	-	-	3	0.5%	-	-
BSN	31	4.9%	28	4.7%	10	1.6%	26	4.5%	29	5.2%	-2	-6.5%
BSW	21	3.3%	16	2.7%	22	3.5%	29	5.0%	28	5.0%	7	33.3%
<b>Master's</b>	<b>171</b>	<b>20.8%</b>	<b>170</b>	<b>21.7%</b>	<b>194</b>	<b>23.2%</b>	<b>207</b>	<b>25.1%</b>	<b>187</b>	<b>24.3%</b>	<b>16</b>	<b>9.4%</b>
MBA	43	25.1%	41	24.1%	52	26.8%	58	28.0%	36	19.3%	-7	-16.3%
MCA	3	1.8%	10	5.9%	11	5.7%	11	5.3%	6	3.2%	3	100.0%
MPA**	2	1.2%	0	0.0%	0	0.0%	0	0.0%	0	0.0%	-2	-100.0%
MED	81	47.4%	84	49.4%	96	49.5%	106	51.2%	110	58.8%	29	35.8%
MME	5	2.9%	4	2.4%	1	0.5%	0	0.0%	0	0.0%	-5	-100.0%
MSCD	10	5.8%	5	2.9%	13	6.7%	9	4.3%	5	2.7%	-5	-50.0%
MSCJ	8	4.7%	7	4.1%	6	3.1%	9	4.3%	5	2.7%	-3	-37.5%
MSN	10	5.8%	7	4.1%	5	2.6%	9	4.3%	15	8.0%	5	50.0%
MSNS	9	5.3%	12	7.1%	10	5.2%	5	2.4%	10	5.3%	1	11.1%
<b>Specialist's</b>	<b>11</b>	<b>1.3%</b>	<b>17</b>	<b>2.2%</b>	<b>17</b>	<b>2.0%</b>	<b>22</b>	<b>2.7%</b>	<b>19</b>	<b>2.5%</b>	<b>8</b>	<b>72.7%</b>
EDS	11	100.0%	17	100.0%	17	100.0%	22	100.0%	19	100.0%	8	72.7%
<b>Doctoral</b>	<b>3</b>	<b>0.4%</b>	<b>1</b>	<b>0.1%</b>	<b>6</b>	<b>0.7%</b>	<b>12</b>	<b>1.5%</b>	<b>3</b>	<b>0.4%</b>	<b>0</b>	<b>0.0%</b>
EDD	3	100.0%	1	100.0%	6	100.0%	12	100.0%	3	100.0%	0	0.0%
<b>TOTAL</b>	<b>824</b>	<b>100.0%</b>	<b>784</b>	<b>100.0%</b>	<b>837</b>	<b>100.0%</b>	<b>825</b>	<b>100.0%</b>	<b>768</b>	<b>100.0%</b>	<b>-56</b>	<b>-6.8%</b>

Source: Office of the Registrar  
Date : June 2006

\* Total degrees awarded in December and May  
\*\* MPA was re-instated in April 2005.



**DELTA STATE UNIVERSITY**  
**DEGREES CONFERRED BY CIP CATEGORY**  
**5-YEAR TREND**

DEGREES	2002*	2003*	2004*	2005*	2006*
<b>BACHELOR'S DEGREE</b>	<b>639</b>	<b>596</b>	<b>620</b>	<b>584</b>	<b>559</b>
Marketing & Distribution**	6	2	-	-	-
Communications	3	2	1	1	1
Education	179	145	151	141	130
Foreign, Language and Literature/Letters	1	0	1	1	2
Family & Consumer Science	14	26	28	28	25
English, Lang. & Lit./Letters	12	10	8	5	3
Bio. Sciences/Life Sciences	37	28	29	25	41
Mathematics	4	2	1	2	1
Multi/Interdisciplinary Studies	8	3	3	2	1
Parks, Rec., Leisure/Fitness Studies**	1	3	-	-	-
Physical Sciences	9	13	11	6	11
Psychology	22	16	19	15	18
Protective Services	25	18	27	22	28
Public Admin. & Services	21	16	22	29	28
Social Sciences & History	39	30	27	19	20
Transportation & Materials	12	24	26	24	19
Visual & Performing Arts	34	26	37	35	27
Health Profession & Related Sci.	42	40	33	44	59
Business Mgt. & Admin. Services	170	192	196	185	140
<b>MASTER'S DEGREE</b>	<b>171</b>	<b>170</b>	<b>194</b>	<b>207</b>	<b>187</b>
Education	86	88	97	106	110
Health Profession & Related Sci.	10	7	5	9	15
Multi/Interdisciplinary Studies	9	12	10	5	10
Protective Services	8	7	6	9	5
Public Admin. & Services	10	5	13	9	5
Transportation & Materials	3	10	11	11	6
Business Mgt. & Admin. Services	45	41	52	58	36
<b>SPECIALIST'S DEGREE</b>	<b>11</b>	<b>17</b>	<b>17</b>	<b>22</b>	<b>19</b>
Education	11	17	17	22	19
<b>DOCTORAL DEGREE</b>	<b>3</b>	<b>1</b>	<b>6</b>	<b>12</b>	<b>3</b>
Education	3	1	6	12	3
<b>GRAND TOTAL - ALL DEGREES</b>	<b>824</b>	<b>784</b>	<b>837</b>	<b>825</b>	<b>768</b>
Source: IHL Statistical Report Date : September 2006					
* Total degrees awarded in December and May ** In 2004, these CIPs changed to a different category					

**DELTA STATE UNIVERSITY**  
**DEGREES AWARDED BY COLLEGE, SCHOOL, AND DEPARTMENT**  
**5-YEAR TREND**

DEGREES	2002*		2003*		2004*		2005*		2006*		5-YR Change	
	#	%	#	%	#	%	#	%	#	%	#	%
Arts and Sciences	288	35%	238	30%	262	31%	243	29%	256	33%	-32	-11%
Art	29	10%	25	11%	34	13%	33	14%	23	9%	-6	-21%
BA	5	17%	6	24%	5	15%	3	9%	5	22%	0	0%
BFA	24	83%	19	76%	29	85%	30	91%	18	78%	-6	-25%
Biological Science**	49	17%	33	14%	36	14%	-	-	-	-	-	-
BSE	5	10%	2	6%	4	2%	-	-	-	-	-	-
BS	36	73%	28	85%	29	11%	-	-	-	-	-	-
BS-Environmental Science	8	16%	3	9%	3	1%	-	-	-	-	-	-
Biological/Physical Sciences**	-	-	-	-	-	-	43	18%	66	26%	-	-
BS	-	-	-	-	-	-	33	77%	53	80%	-	-
BSE	-	-	-	-	-	-	5	12%	3	5%	-	-
MSNS	-	-	-	-	-	-	5	12%	10	15%	-	-
History	8	3%	7	3%	7	3%	7	3%	0	0%	-8	-100%
BA	6	75%	3	43%	5	71%	1	14%	0	0%	-6	-100%
MED	2	25%	4	57%	2	29%	6	86%	0	0%	-2	-100%
Interdisciplinary Studies	-	-	-	-	-	-	-	-	3	1%	-	-
BSIS	-	-	-	-	-	-	-	-	3	100%	-	-
Languages and Literature	27	9%	17	7%	18	7%	20	8%	12	5%	-15	-56%
BA	16	59%	12	71%	10	56%	7	35%	8	67%	-8	-50%
BSE	8	30%	2	12%	5	28%	11	55%	2	17%	-6	-75%
MED	3	11%	3	18%	3	17%	2	10%	2	17%	-1	-33%
Mathematics	6	2%	7	3%	7	3%	4	2%	5	2%	-1	-17%
BS	5	83%	2	29%	1	14%	2	50%	1	20%	-4	-80%
BSE	1	17%	4	57%	6	86%	2	50%	4	80%	3	3%
MED	0	0%	1	14%	0	0%	0	0%	0	0%	0	0%
Music	18	6%	18	8%	12	5%	11	5%	8	3%	-10	-56%
BM	2	11%	0	0%	2	17%	1	9%	2	25%	0	0%
BME	8	44%	13	72%	8	67%	9	82%	4	50%	-4	-50%
BA	3	17%	1	6%	1	8%	1	9%	2	25%	-1	-33%
MME	5	28%	4	22%	1	8%	0	0%	0	0%	-5	-100%
Natural Science**	9	3%	12	5%	10	4%	-	-	-	-	-	-
MSNS	9	100%	12	100%	10	100%	-	-	-	-	-	-

Source: Office of the Registrar

Date : August 2006

Page 1 of 3

\* Total degrees awarded in December and May

\*\* In Summer 2004, Biological & Physical Sciences combined

**DELTA STATE UNIVERSITY**  
**DEGREES AWARDED BY COLLEGE, SCHOOL, AND DEPARTMENT**  
**5 YEAR TREND**

DEGREES	2002*		2003*		2004*		2005*		2006*		5-YR Change	
	#	%	#	%	#	%	#	%	#	%	#	%
<b>A&amp;S (CONT.)</b>												
Physical Science**	9	3%	13	5%	11	4%	-	-	-	-	-	-
BS	9	100%	13	100%	11	100%	-	-	-	-	-	-
Secondary Education	-	-	-	-	-	-	-	-	2	1%	-	-
MED	-	-	-	-	-	-	-	-	1	50%	-	-
EDS	-	-	-	-	-	-	-	-	1	50%	-	-
Social Science	101	35%	78	33%	85	32%	78	32%	83	32%	-18	-18%
BSE	14	14%	13	17%	13	15%	6	8%	14	17%	0	0%
BA	8	8%	6	8%	4	5%	2	3%	5	6%	-3	-38%
BS	3	3%	10	13%	15	18%	16	21%	15	18%	12	4%
BSCJ	25	25%	18	23%	27	32%	22	28%	28	34%	3	12%
BSGS	22	22%	11	14%	43%	1%	0	0%	0	0%	-22	-100%
MED	11	11%	8	10%	4	5%	14	18%	11	13%	0	0%
MSCD	10	10%	5	6%	13	15%	9	12%	5	6%	-5	-50%
MSCJ	8	8%	7	9%	6	7%	9	12%	5	6%	-3	-38%
Social Work	21	7%	16	7%	22	8%	29	12%	28	11%	7	33%
BSW	21	100%	16	100%	22	100%	29	100%	28	100%	7	33%
Speech and Hearing Science***	11	4%	12	5%	20	8%	18	7%	26	10%	15	-47%
BS	11	100%	12	100%	20	100%	18	100%	26	100%	15	136%
<b>Business</b>	<b>233</b>	<b>28%</b>	<b>270</b>	<b>34%</b>	<b>284</b>	<b>34%</b>	<b>283</b>	<b>34%</b>	<b>198</b>	<b>26%</b>	<b>-35</b>	<b>-15%</b>
Acctg, Finance, & CIS****	54	23%	62	23%	98	35%	91	32%	53	27%	-1	-2%
BBA	52	96%	62	100%	98	100%	91	100%	53	100%	1	2%
MPA	2	4%	0	0%	0	0%	0	0%	0	0%	-2	-100%
Business Administration	43	18%	41	15%	52	18%	58	20%	36	18%	-7	-16%
MBA	43	100%	41	100%	52	100%	58	100%	36	100%	-7	-16%
Commercial Aviation	15	6%	34	13%	37	13%	35	12%	25	13%	10	67%
BCA	12	80%	24	71%	26	70%	24	69%	19	76%	7	58%
MCA	3	20%	10	29%	11	30%	11	31%	6	24%	3	100%
Economics & Finance****	51	22%	57	21%	-	-	-	-	-	-	-	-
BBA	51	100%	57	21%	-	-	-	-	-	-	-	-
Mgt., Mkt., Bus. Admin****	70	30%	76	28%	97	34%	99	35%	84	42%	14	20%
BBA	67	96%	73	96%	94	97%	89	90%	83	99%	16	24%
BSE	3	4%	3	4%	3	3%	10	10%	1	1%	-2	-67%

Source: Office of the Registrar  
Date : August 2006

Page 2 of 3

- \* Total degrees awarded in December and May
- \*\* In Summer 2004, Biological & Physical Sciences combined.
- \*\*\* Audiology and Speech Pathology was renamed to Speech and Hearing Science in AY 2005-06.
- \*\*\*\* In Summer 2003, Economics combined with MGT and MKT and Finance combined with ACC, CIS & IRR.

<p style="text-align: center;"><b>DELTA STATE UNIVERSITY</b>  <b>DEGREES AWARDED BY COLLEGE, SCHOOL, AND DEPARTMENT</b>  <b>5-YEAR TREND</b></p>												
DEGREES	2002*		2003*		2004*		2005*		2006*		5-YR Change	
	#	%	#	%	#	%	#	%	#	%	#	%
Education	262	32%	241	31%	276	33%	264	32%	270	35%	8	3%
Counselor Ed. & Psychology**	23	9%	23	10%	43	16%	25	9%	37	14%	14	61%
BA	0	0%	0	0%	19	44%	15	60%	18	49%	18	0%
BSE	5	22%	7	30%	3	7%	0	0%	0	0%	-5	-100%
MED	18	78%	16	70%	21	49%	10	40%	19	51%	1	6%
Curriculum & Instruction***	117	45%	114	47%	136	49%	138	52%	-	-	-	-
BSE	74	63%	67	59%	65	48%	51	37%	-	-	-	-
MED	29	25%	29	25%	48	35%	53	38%	-	-	-	-
EDS	11	9%	17	15%	17	13%	22	16%	-	-	-	-
EDD	3	3%	1	1%	6	4%	12	9%	-	-	-	-
Health, Physical Ed. & Rec.	80	31%	60	25%	65	24%	68	26%	56	21%	-24	-30%
BS	1	1%	3	5%	3	5%	1	1%	17	30%	16	16%
BSE	10	13%	8	13%	8	12%	11	16%	6	11%	-4	-40%
BSGS	51	64%	26	43%	36	55%	35	51%	19	34%	-32	-63%
MED	18	23%	23	38%	18	28%	21	31%	14	25%	-4	-22%
Family & Consumer Science	20	8%	28	12%	32	12%	33	13%	29	11%	9	45%
BS-Fashion Merchandising	6	30%	2	7%	4	13%	5	15%	4	14%	-2	-33%
BS-Family & Cons. Sci.	14	70%	26	93%	28	88%	28	85%	25	86%	11	79%
Psychology**	22	8%	16	7%	-	-	-	-	-	-	-	-
BA	22	100%	16	100%	-	-	-	-	-	-	-	-
Rural School Leadership	-	-	-	-	-	-	-	-	27	10%	-	-
MED	-	-	-	-	-	-	-	-	15	56%	-	-
EDS	-	-	-	-	-	-	-	-	9	33%	-	-
EDD	-	-	-	-	-	-	-	-	3	11%	-	-
Teacher Education	-	-	-	-	-	-	-	-	121	45%	-	-
BSE	-	-	-	-	-	-	-	-	64	53%	-	-
MED	-	-	-	-	-	-	-	-	48	40%	-	-
EDS	-	-	-	-	-	-	-	-	9	7%	-	-
Nursing	41	5%	35	4%	15	2%	35	4%	44	6%	3	7%
Nursing	41	100%	35	100%	15	100%	35	100%	44	16%	3	7%
BSN	31	76%	28	80%	10	67%	26	74%	29	66%	-2	-6%
MSN	10	24%	7	20%	5	33%	9	26%	15	34%	5	50%
University Total	824	100%	784	100%	837	100%	825	100%	768	100%	-56	-7%
<p>Source: Office of the Registrar  Date : August 2006</p>												
<p style="text-align: center;">Page 3 of 3</p>												
<p>* Total degrees awarded in December and May  ** In Summer 2003, Psychology combined with Counselor Education.  *** In Fall 2005, Curriculum &amp; Instruction divided into Teacher Ed. &amp; Rural School Leadership.</p>												

**DELTA STATE UNIVERSITY**  
**DEGREES AWARDED BY UNDERGRADUATE MAJORS**  
**2005-06**

DEGREES	#	%	DEGREES	#	%
<b>ARTS &amp; SCIENCES</b>	<b>221</b>	<b>40%</b>	<b>BUSINESS</b>	<b>156</b>	<b>28%</b>
Art	23	10%	Accounting	7	5%
Biology	41	19%	Aviation Management	5	3%
Biology Education	3	1%	Business Education	1	1%
Chemistry (2)	11	5%	Comp. Info. Systems	32	21%
Criminal Justice	28	13%	Finance	6	4%
English	3	1%	Flight Operations	14	9%
English Education	2	1%	General Business	29	19%
Environmental Science	1	1%	Insurance and Real Estate (1)	8	5%
History	0	0%	Management	39	25%
Interdisciplinary Studies	3	1%	Marketing (1)	12	8%
Journalism	1	1%	Office Administration	3	2%
Mathematics	1	1%	<b>EDUCATION</b>	<b>153</b>	<b>27%</b>
Mathematics Education	4	2%	Athletic Training	4	3%
Modern Foreign Languages	2	1%	Elementary Education	58	38%
Music	4	2%	Family & Consumer Sciences	25	16%
Music Education	4	2%	Fashion Merchandising	4	3%
Political Science	5	2%	Health, PE, & Recreation	38	25%
Social Science	15	7%	Psychology	18	12%
Social Science Education	14	6%	Special Education	6	4%
Social Work	28	13%	<b>NURSING</b>	<b>29</b>	<b>5%</b>
Sociology	0	0%	Nursing	29	100%
Speech Comm. & Theatre Art	2	1%	<b>UNIVERSITY TOTALS</b>	<b>559</b>	<b>100%</b>
Speech & Hearing Sciences	26	12%			

Source: Office of the Registrar  
Date : July 2006

( ) Denotes the number of additional 2nd majors.

**DELTA STATE UNIVERSITY**  
**DEGREES AWARDED BY UNDERGRADUATE MAJORS**  
**DECEMBER 2005**

DEGREES	#	%	DEGREES	#	%
<b>ARTS &amp; SCIENCES</b>	<b>72</b>	<b>31%</b>	<b>BUSINESS</b>	<b>78</b>	<b>33%</b>
Art	8	11%	Accounting (2)	2	3%
Biology	16	22%	Aviation Management	3	4%
Biology Education	2	3%	Business Education	1	1%
Chemistry	5	7%	Comp. Info. Systems	17	22%
Criminal Justice	12	17%	Finance	3	4%
English	1	1%	Flight Operations	5	6%
Interdisciplinary Studies	2	3%	General Business	14	18%
Mathematics Education	1	1%	Insurance and Real Estate	2	3%
Modern Foreign Languages	1	1%	Management	24	31%
Music	1	1%	Marketing	5	6%
Music Education	2	3%	Office Administration	2	3%
Political Science	1	1%	<b>EDUCATION</b>	<b>73</b>	<b>31%</b>
Social Science	5	7%	Athletic Training	0	0%
Social Science Education	8	11%	Elementary Education	24	33%
Social Work	2	3%	Family & Consumer Sciences	15	21%
Sociology	0	0%	Fashion Merchandising	4	5%
Speech Comm & Theatre Arts	0	0%	Health, PE, & Recreation	17	23%
Speech & Hearing Sciences	5	7%	Psychology	9	12%
			Special Education	4	5%
			<b>NURSING</b>	<b>12</b>	<b>5%</b>
			Nursing	12	100%
			<b>UNIVERSITY TOTALS</b>	<b>235</b>	<b>100%</b>

Source: Office of the Registrar  
Date : July 2006

( ) Denotes the number of additional 2nd majors.

**DELTA STATE UNIVERSITY**  
**DEGREES AWARDED BY UNDERGRADUATE MAJORS**  
**MAY 2006**

DEGREES	#	%	DEGREES	#	%
<b>ARTS &amp; SCIENCES</b>	<b>149</b>	<b>46%</b>	<b>BUSINESS</b>	<b>79</b>	<b>24%</b>
Art	15	10%	Accounting	6	8%
Art Education	0	0%	Aviation Management	2	3%
Speech & Hearing Sciences	21	14%	Comp. Info. Systems	15	19%
Biology	25	17%	Finance	3	4%
Biology Education	1	1%	Flight Operations	9	11%
Chemistry (2)	6	4%	General Business	15	19%
Criminal Justice	16	11%	Insurance and Real Estate (1)	6	8%
English	2	1%	Management	15	19%
English Education	2	1%	Marketing	7	9%
Environmental Science	1	1%	Office Administration	1	1%
Interdisciplinary Studies	1	1%	<b>EDUCATION</b>	<b>80</b>	<b>25%</b>
Journalism	1	1%	Athletic Training	4	5%
Mathematics	1	1%	Elementary Education	34	43%
Mathematics Education	3	2%	Family & Consumer Sciences	10	13%
Modern Foreign Languages	1	1%	Health, PE & Recreation	21	26%
Music	3	2%	Psychology	9	11%
Music Education	2	1%	Special Education	2	3%
Political Science	4	3%	<b>NURSING</b>	<b>17</b>	<b>5%</b>
Social Science	10	7%	Nursing	17	100%
Social Science Education	6	4%			
Social Work	26	17%	<b>UNIVERSITY TOTALS</b>	<b>325</b>	<b>100%</b>
Speech Comm & The. Arts	2	1%			

Source: Office of the Registrar  
Date : August 2006

( ) Denotes the number of additional 2nd majors

**DELTA STATE UNIVERSITY**  
**DEGREES AWARDED BY GRADUATE MAJORS**  
**2005-06**

DEGREES	#	%	DEGREES	#	%
ARTS & SCIENCES	35	16%	BUSINESS	42	20%
Criminal Justice	5	15%	Accounting	0	0%
Community Development	5	15%	Business Administration	36	86%
English Education	2	6%	Commercial Aviation	6	14%
History Education	0	0%			
Mathematics Education	0	0%			
Music Education	0	0%			
Natural Sciences	10	30%			
Secondary Education	1	3%			
Secondary Education*	1	3%			
Social Science Education	11	33%			
			EDUCATION	117	56%
			Counseling	19	16%
			Educational Administration*	9	8%
			Educational Leadership	15	13%
			Elementary Education*	9	8%
			Elementary Education	36	31%
			Health, PE, & Recreation	14	12%
			Professional Studies**	3	3%
			School Counseling	0	0%
			Special Education	12	10%
			NURSING	15	7%
			Nursing	15	100%
			UNIVERSITY TOTALS	209	100%

Source: Office of the Registrar  
Date : August 2006

\* Denotes EDS  
\*\* Denotes EDD



**DELTA STATE UNIVERSITY**  
**DEGREES AWARDED BY GRADUATE MAJORS**  
December 2005

DEGREES	#	%	DEGREES	#	%
ARTS & SCIENCES	18	14%	BUSINESS	28	22%
Criminal Justice	2	11%	Accounting	1	4%
Community Development	4	22%	Business Administration	23	82%
Natural Sciences	5	28%	Commercial Aviation	4	14%
Social Science Education	7	39%			
			EDUCATION	82	64%
			Counseling	9	11%
			Educational Administration *	5	6%
			Educational Leadership	15	18%
			Elementary Education *	7	9%
			Elementary Education	26	32%
			Health, PE, & Recreation	10	12%
			Professional Studies **	1	1%
			Special Education	8	10%
			Secondary Education	1	1%
			NURSING	0	0%
			Nursing	0	0%
			UNIVERSITY TOTALS	128	100%

Source: Office of the Registrar  
Date : August 2006

\* Denotes EDS  
\*\* Denotes EDD

**DELTA STATE UNIVERSITY**  
**DEGREES AWARDED BY GRADUATE MAJORS**  
**MAY 2006**

DEGREES	#	%	DEGREES	#	%
ARTS & SCIENCES	16	20%	BUSINESS	15	18%
Criminal Justice	3	19%	Accounting	0	0%
Community Development	1	6%	Business Administration	13	87%
English Education	2	13%	Commercial Aviation	2	13%
History Education	0	0%			
Mathematics Education	0	0%			
Music Education	0	0%			
Natural Sciences	5	31%			
Social Science Education	4	25%			
Secondary Education	1	6%			
			EDUCATION	36	44%
			Counseling	10	28%
			Educational Administration	4	11%
			Educational Leadership	0	0%
			Elementary Education *	2	6%
			Elementary Education	10	28%
			Health, PE, & Recreation	4	11%
			Professional Studies **	2	6%
			Special Education	4	11%
			NURSING	15	18%
			Nursing	15	100%
			UNIVERSITY TOTALS	82	100%

Source: Office of the Registrar

\* Denotes EDS

Date : August 2006

\*\* Denotes EDD

**DELTA STATE UNIVERSITY**  
**GRADUATION WITH HONORS**  
**5-YEAR TREND**

HONORS:	2002*	2003*	2004**	2005**	2006**
<b>ARTS &amp; SCIENCES</b>	63	48	61	43	55
Bachelor of Arts	8	5	12	5	6
Bachelor of Fine Arts	6	4	8	5	8
Bachelor of Music	2	0	2	1	1
Bachelor of Music Education	5	8	5	6	2
Bachelor of Science	25	22	21	23	31
Bachelor of Science in Criminal Justice	2	1	2	0	0
Bachelor of Science in Education	10	6	8	0	4
Bachelor of Science in General Studies	2	0	1	0	0
Bachelor of Social Work	3	2	2	3	3
<b>BUSINESS</b>	40	34	28	24	16
Bachelor of Business Administration	35	26	23	21	11
Bachelor of Commercial Aviation	3	7	4	3	5
Bachelor of Science in Education	2	1	1	0	0
<b>EDUCATION</b>	40	19	26	30	27
Bachelor of Arts	7	3	3	2	3
Bachelor of Science	5	3	7	6	9
Bachelor of Science in Education	21	12	13	18	15
Bachelor of Science in General Studies	7	1	3	4	0
<b>NURSING</b>	5	4	1	5	9
Bachelor of Science in Nursing	5	4	1	5	9
<b>TOTAL HONORS AWARDED</b>	148	105	116	102	107

Source: Office of the Registrar  
Date : July 2006

\* Includes 2 and 4 year honors  
\*\* Effective May 2004, 2 and 4 year honors  
changed to Latin Honors

**DELTA STATE UNIVERSITY**  
**GRADUATION WITH HONORS**  
**DECEMBER 2005**

	Honors			Total Honors	All Graduates	%
	Cum Laude	Magna Cum Laude	Summa Cum Laude			
<b>ARTS &amp; SCIENCES</b>	5	2	2	9	72	12.5%
Bachelor of Arts	1	0	0	1	5	5.0%
Bachelor of Fine Arts	0	0	0	0	6	0.0%
Bachelor of Music	0	0	0	0	1	0.0%
Bachelor of Music Education	0	1	0	1	2	50.0%
Bachelor of Science	3	2	1	6	33	5.5%
Bachelor of Science in Crim. Just.	0	0	0	0	12	0.0%
Bachelor of Science in Education	1	0	1	2	11	18.2%
Bachelor of Science in Gen. Stud.	0	0	0	0	0	0.0%
Bachelor of Social Work	0	0	0	0	2	0.0%
<b>BUSINESS</b>	4	2	1	7	78	8.9%
Bachelor of Business Admin.	3	1	1	5	69	7.2%
Bachelor of Commercial Aviation	1	1	0	2	8	25.0%
Bachelor of Science in Education	0	0	0	0	1	0.0%
<b>EDUCATION</b>	6	5	4	15	73	20.5%
Bachelor of Arts	1	1	0	2	9	22.2%
Bachelor of Science	2	2	2	6	22	27.3%
Bachelor of Science in Education	3	1	2	6	29	20.7%
Bachelor of Science in Gen. Stud.	0	0	0	0	13	0.0%
<b>NURSING</b>	1	0	0	1	12	8.3%
Bachelor of Science in Nursing	1	0	0	1	12	8.3%
<b>TOTALS</b>	16	7	7	32	235	13.6%

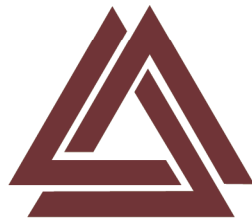
Source: Office of the Registrar  
Date : September 2006

**DELTA STATE UNIVERSITY**  
**GRADUATION WITH HONORS**  
MAY 2006

	Honors			Total Honors	All Graduates	%
	Cum Laude	Magna Cum Laude	Summa Cum Laude			
<b>ARTS &amp; SCIENCES</b>	29	12	3	44	149	29.5%
Bach. of Arts	3	2	0	5	15	33.3%
Bach. of Fine Arts	6	2	0	8	12	66.7%
Bach. of Music	0	0	1	1	1	100.0%
Bach. of Music Education	0	1	0	1	2	50.0%
Bach. of Science	16	7	2	25	64	39.1%
Bach. of Science in Crim. Just.	0	0	0	0	16	0.0%
Bach. of Science in Education	2	0	0	2	12	16.7%
Bach. of Science in Gen. Stud.	0	0	0	0	0	0.0%
Bach. of Science in Int. Studies	0	0	0	0	1	0.0%
Bach. of Social Work	2	1	0	3	26	11.5%
<b>BUSINESS</b>	8	1	0	9	79	11.4%
Bach. of Business Admin.	6	0	0	6	68	8.8%
Bach. of Commercial Aviation	2	1	0	3	11	27.3%
Bach. of Science in Education	0	0	0	0	0	0.0%
<b>EDUCATION</b>	8	6	0	14	80	17.5%
Bach. of Arts	1	0	0	1	9	11.1%
Bach. of Science	1	2	0	3	24	12.5%
Bach. of Science in Education	6	3	0	9	41	22.0%
Bach. of Science in Gen. Stud.	0	0	0	0	6	0.0%
<b>NURSING</b>	5	2	1	8	17	47.1%
Bach. of Science in Nursing	5	2	1	8	17	47.1%
<b>TOTALS</b>	51	21	4	75	325	23.1%

Source: Office of the Registrar  
Date : September, 2006

# Faculty & Staff



Delta State University

**DELTA STATE UNIVERSITY**  
**FACULTY PROFILE: UNIVERSITY TOTALS**  
**FALL 2005**

	PROFESSOR			ASSOC. PROF.			ASSIS. PROF.			INSTRUCTOR			ALL RANKS		
	FT	PT	Total	FT	PT	Total	FT	PT	Total	FT	PT	Total	FT	PT	Total
Headcount	35	29	64	17	10	27	60	15	75	29	66	95	141	120	261
FTE*	36.36	11.93	48.29	17.45	4	21.45	61.28	5.75	67.03	30	20.45	50.45	145.1	42.13	187.2
Men	26	18	44	11	6	17	26	8	34	9	32	41	72	64	136
Women	9	11	20	6	4	10	34	7	41	20	34	54	69	56	125
Tenured	35	20	55	12	8	20	8	1	9	0	0	0	55	29	84
Not Tenured	0	9	9	5	2	7	52	14	66	29	66	95	86	91	177
Doctoral	32	23	55	17	10	27	43	9	52	0	10	10	92	52	144
First Professional	1	0	1	0	0	0	0	1	1	1	2	3	2	3	5
Specialist	0	0	0	0	0	0	1	0	1	1	4	5	2	4	6
Master's Degree	2	6	8	0	0	0	16	5	21	27	47	74	45	58	103
Bachelor's Degree	0	0	0	0	0	0	0	0	0	0	3	3	0	3	3
Caucasian	33	28	61	17	10	27	55	14	69	22	58	80	127	110	237
Asian	1	0	1	0	0	0	1	1	2	1	1	2	3	2	5
Black	0	1	1	0	0	0	4	0	4	6	7	13	10	8	18
Hispanic	1	0	1	0	0	0	0	0	0	0	0	0	1	0	1
Average Salary **	\$57,171			\$51,308			\$44,217			\$35,962			\$46,757		

Source: Office of Institutional Research & Planning  
Date : January 2006

\* Department chairs FTE decreased from 100% to 75% in Fall 2002.  
\*\* Based on salary of filled positions only.

**DELTA STATE UNIVERSITY**  
**FACULTY PROFILE: COLLEGE OF ARTS AND SCIENCES**  
**FALL 2005**

	PROFESSOR			ASSOC. PROF.			ASSIS. PROF.			INSTRUCTOR			ALL RANKS		
	FT	PT	Total	FT	PT	Total	FT	PT	Total	FT	PT	Total	FT	PT	Total
Headcount	22	20	42	6	2	8	34	8	42	12	31	43	74	61	135
FTE*	23.24	9	32.24	6.2	1.25	7.45	34	3.25	37.25	12.25	11.17	23.42	75.69	24.67	100.4
Men	16	14	30	5	1	6	19	4	23	3	20	23	43	39	82
Women	6	6	12	1	1	2	15	4	19	9	11	20	31	22	53
Tenured	22	15	37	5	2	7	4	0	4	0	0	0	31	17	48
Not Tenured	0	5	5	1	0	1	30	8	38	12	31	43	43	44	87
Doctoral	20	14	34	6	2	8	23	6	29	0	3	3	49	25	74
First Professional	0	0	0	0	0	0	0	1	1	1	2	3	1	3	4
Specialist	0	0	0	0	0	0	0	0	0	1	1	2	1	1	2
Master's Degree	2	6	8	0	0	0	11	1	12	10	22	32	23	29	52
Bachelor's Degree	0	0	0	0	0	0	0	0	0	0	3	3	0	3	3
Caucasian	21	20	41	6	2	8	30	8	38	9	28	37	66	58	124
Asian	0	0	0	0	0	0	1	0	1	1	0	1	2	0	2
Black	0	0	0	0	0	0	3	0	3	2	3	5	5	3	8
Hispanic	1	0	1	0	0	0	0	0	0	0	0	0	1	0	1
Average Salary **	\$53,596			\$46,522			\$41,828			\$37,877			\$45,662		

Source: Office of Institutional Research & Planning  
Date : January 2006

\* Department chairs FTE decreased from 100% to 75% in Fall 2002.  
\*\* Based on salary of filled positions only.



**DELTA STATE UNIVERSITY**  
**FACULTY PROFILE: COLLEGE OF BUSINESS**  
**FALL 2005**

	PROFESSOR			ASSOC. PROF.			ASSIS. PROF.			INSTRUCTOR			ALL RANKS		
	FT	PT	Total	FT	PT	Total	FT	PT	Total	FT	PT	Total	FT	PT	Total
Headcount	7	2	9	4	4	8	8	1	9	10	4	14	29	11	40
FTE*	7	0.75	7.75	4	1	5	8	0.5	8.5	10.25	1.25	11.5	29.25	3.5	32.75
Men	6	2	8	3	3	6	3	1	4	5	3	8	17	9	26
Women	1	0	1	1	1	2	5	0	5	5	1	6	12	2	14
Tenured	7	2	9	1	3	4	3	1	4	0	0	0	11	6	17
Not Tenured	0	0	0	3	1	4	5	0	5	10	4	14	18	5	23
Doctoral	6	2	8	4	4	8	4	0	4	0	0	0	14	6	20
First Professional	1	0	1	0	0	0	0	0	0	0	0	0	1	0	1
Specialist	0	0	0	0	0	0	1	0	1	0	0	0	1	0	1
Master's Degree	0	0	0	0	0	0	3	1	4	10	4	14	13	5	18
Bachelor's Degree	0	0	0	0	0	0	0	0	0	0	0	0	0	0	0
Caucasian	6	1	7	4	4	8	7	0	7	8	3	11	25	8	33
Asian	1	0	1	0	0	0	0	1	1	0	1	1	1	2	3
Black	0	1	1	0	0	0	1	0	1	2	0	2	3	1	4
Hispanic	0	0	0	0	0	0	0	0	0	0	0	0	0	0	0
Average Salary **	\$69,842			\$60,189			\$59,013			\$54,127			\$60,189		

Source: Office of Institutional Research & Planning  
Date : January 2006

\* Department chairs FTE decreased from 100% to 75% in Fall 2002.  
\*\* Based on salary of filled positions only.

**DELTA STATE UNIVERSITY**  
**FACULTY PROFILE: COLLEGE OF EDUCATION**  
**FALL 2005**

	PROFESSOR			ASSOC. PROF.			ASSIS. PROF.			INSTRUCTOR			ALL RANKS		
	FT	PT	Total	FT	PT	Total	FT	PT	Total	FT	PT	Total	FT	PT	Total
Headcount	5	6	11	6	3	9	16	5	21	4	24	28	31	38	69
FTE*	5.12	1.78	6.9	6.25	1.25	7.5	17.28	1.5	18.78	4.5	5.88	10.38	33.15	10.41	43.56
Men	4	2	6	3	2	5	4	3	7	1	9	10	12	16	28
Women	1	4	5	3	1	4	12	2	14	3	15	18	19	22	41
Tenured	5	3	8	5	2	7	1	0	1	0	0	0	11	5	16
Not Tenured	0	3	3	1	1	2	15	5	20	4	24	28	20	33	53
Doctoral	5	6	11	6	3	9	14	3	17	0	6	6	25	18	43
First Professional	0	0	0	0	0	0	0	0	0	0	0	0	0	0	0
Specialist	0	0	0	0	0	0	0	0	0	0	3	3	0	3	3
Master's Degree	0	0	0	0	0	0	2	2	4	4	15	19	6	17	23
Bachelor's Degree	0	0	0	0	0	0	0	0	0	0	0	0	0	0	0
Caucasian	5	6	11	6	3	9	16	5	21	2	22	24	29	36	65
Asian	0	0	0	0	0	0	0	0	0	0	0	0	0	0	0
Black	0	0	0	0	0	0	0	0	0	2	2	4	2	2	4
Hispanic	0	0	0	0	0	0	0	0	0	0	0	0	0	0	0
Average Salary **	\$61,174			\$47,088			\$43,773			\$38,289			\$47,391		

Source: Office of Institutional Research & Planning  
Date : January 2006

\* Department chairs FTE decreased from 100% to 75% in Fall 2002.  
\*\* Based on salary of filled positions only.

**DELTA STATE UNIVERSITY**  
**FACULTY PROFILE: SCHOOL OF NURSING**  
**FALL 2005**

	PROFESSOR			ASSOC. PROF.			ASSIS. PROF.			INSTRUCTOR			ALL RANKS		
	FT	PT	Total	FT	PT	Total	FT	PT	Total	FT	PT	Total	FT	PT	Total
Headcount	1	1	2	1	1	2	2	1	3	3	7	10	7	10	17
FTE*	1	0.4	1.4	1	0.5	1.5	2	0.5	2.5	3	2.15	5.15	7	3.55	10.55
Men	0	0	0	0	0	0	0	0	0	0	0	0	0	0	0
Women	1	1	2	1	1	2	2	1	3	3	7	10	7	10	17
Tenured	1	0	1	1	1	2	0	0	0	0	0	0	2	1	3
Not Tenured	0	1	1	0	1	1	2	1	3	3	7	10	5	10	15
Doctoral	1	1	2	1	1	2	2	0	2	0	1	1	4	3	7
First Professional	0	0	0	0	0	0	0	0	0	0	0	0	0	0	0
Specialist	0	0	0	0	0	0	0	0	0	0	0	0	0	0	0
Master's Degree	0	0	0	0	0	0	0	1	1	3	6	9	3	7	10
Bachelor's Degree	0	0	0	0	0	0	0	0	0	0	0	0	0	0	0
Caucasian	1	1	2	1	1	2	2	1	3	3	5	8	7	8	15
Asian	0	0	0	0	0	0	0	0	0	0	0	0	0	0	0
Black	0	0	0	0	0	0	0	0	0	0	2	2	0	2	2
Hispanic	0	0	0	0	0	0	0	0	0	0	0	0	0	0	0
Average Salary **	\$70,000			\$57,185			\$54,440			\$47,223			\$53,962		

Source: Office of Institutional Research & Planning  
Date : January 2006

\* Department chairs FTE decreased from 100% to 75% in Fall 2002.  
\*\* Based on salary of filled positions only.

**DELTA STATE UNIVERSITY**  
**PUPIL-TEACHER RATIO**  
**FALL 2005**

	FTE Faculty	Credit Hours*	FTE Students	PTR
<b>UNIVERSITY TOTAL</b>	189.47	44,868	3053.13	16
<b>ARTS &amp; SCIENCES</b>	102.11	22,838	1533.73	15
Art	11.50	1,743	116.25	10
Biological and Physical Sciences	18.20	4,519	304.11	17
Delta Music Institute	2.00	135	9.00	5
History	4.50	1,500	118.33	26
Interdisciplinary Studies	0.50	51	3.40	7
Languages and Literature	22.75	5,155	326.37	14
Library Services	0.25	1	0.67	3
Mathematics	7.75	2,357	157.13	20
Military Science**	0.00	4	0.00	-
Music	15.66	1,580	105.37	7
Social Sciences	13.00	3,759	257.50	20
Social Work	3.75	942	62.80	17
Speech and Hearing Sciences	2.25	1,092	72.80	32
<b>BUSINESS</b>	32.75	9,410	628.75	19
Accounting, Finance & Comp. Info Syst.	16.75	4,233	286.75	17
Commercial Aviation	3.00	1,064	73.78	25
Management, Marketing & Busin. Adm.	13.00	4,113	268.22	21
<b>EDUCATION</b>	44.06	11,707	823.70	19
Counselor Education and Psychology	10.75	2,729	196.53	18
Family & Consumer Science	4.83	1,700	113.33	23
H P E & R	8.80	3,009	203.15	23
Rural School Leadership	4.56	770	64.17	14
Teacher Education	15.12	3,499	246.52	16
<b>NURSING</b>	10.55	913	66.95	6
Nursing	10.55	913	66.95	6

Source: Institutional Research & Planning \* On-campus undergraduate and graduate data combined.  
Date : April 2006 \*\* Program discontinued in Summer 1995.

**DELTA STATE UNIVERSITY**  
**FACULTY CHARACTERISTICS**  
1996-2005

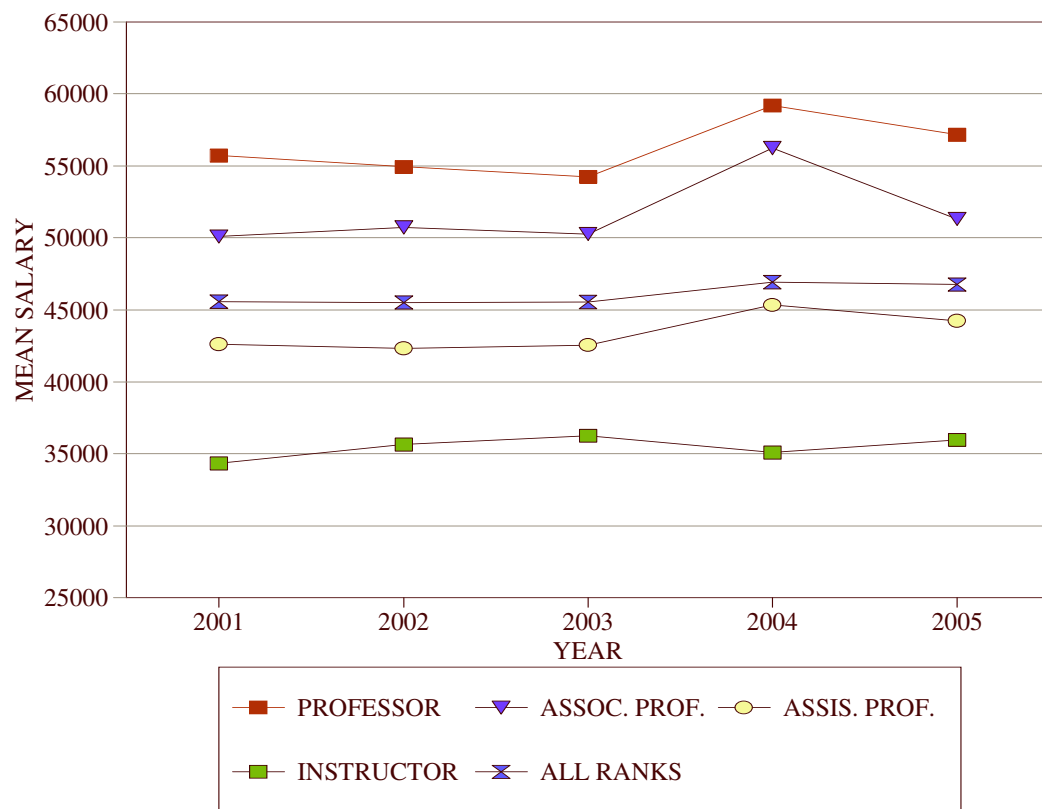
SCHOOL YEAR	1996-97	1997-98	1998-99	1999-2000	2000-01	2001-02	2002-03	2003-04	2004-05	2005-06
Tenured	93	95	90	88	100	100	100	84	88	84
Not-Tenured, Tenure Track	89	90	93	99	78	68	63	71	75	66
Not Tenured	94	90	87	97	112	99	95	109	106	111
Male	165	164	163	161	162	144	144	148	148	136
Female	111	111	107	123	128	116	114	116	121	125
Professor	82	87	83	88	91	90	87	69	72	64
Associate Professor	38	37	34	32	29	26	29	33	30	27
Assistant Professor	68	68	74	77	71	64	57	63	70	75
Instructor	88	83	78	87	99	87	85	99	96	95
Other	0	0	0	1	0	0	0	0	1	0
Doctoral	140	142	143	153	148	145	142	149	149	144
First Professional	5	6	9	1	2	2	3	6	8	5
Specialist	1	2	2	4	6	7	3	4	4	6
Master's	123	120	111	118	125	105	103	97	105	103
Bachelor's	7	5	5	8	8	8	7	7	3	3
Total	276	275	270	284	290	267	258	264	269	261
FTE Filled Postions *	193	194	198	203						

Source: Institutional Research  
Date : August 2006

\* Full-time Equivalent Filled Positions as reported in the IHL Analysis of Operating Budgets.  
Teaching faculty only. Does not include administrative, part-time, or professional non-faculty  
with faculty rank. As of June 2000, IHL no longer collects this data.

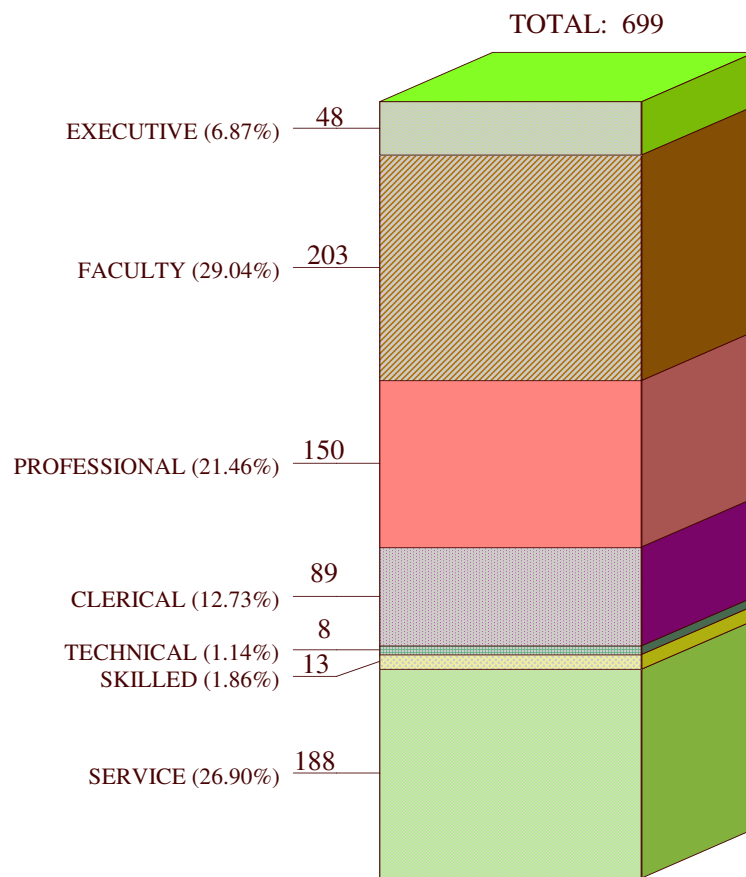
# **DELTA STATE UNIVERSITY** **MEAN SALARIES OF FACULTY BY RANK** **5-YEAR TREND**

RANK	2001	2002	2003	2004	2005
Professor	\$55,726	\$54,947	\$54,228	\$59,189	\$57,171
Associate Professor	\$50,086	\$50,726	\$50,267	\$56,249	\$51,308
Assistant Professor	\$42,613	\$42,325	\$42,542	\$45,348	\$44,217
Instructor	\$34,331	\$35,655	\$36,266	\$35,101	\$35,962
ALL RANKS	\$45,564	\$45,505	\$45,536	\$46,915	\$46,757



Source: Institutional Research and Planning  
Date : January 2006

# DELTA STATE UNIVERSITY DISTRIBUTION OF EMPLOYEES \* FALL 2005



Source: IHL Statistical Report  
Date : August 2006

\* Includes full-time and part-time.

# Resources



Delta State University



**DELTA STATE UNIVERSITY**  
**TUITION & FEES: ANNUAL RATES**  
**2005-06**

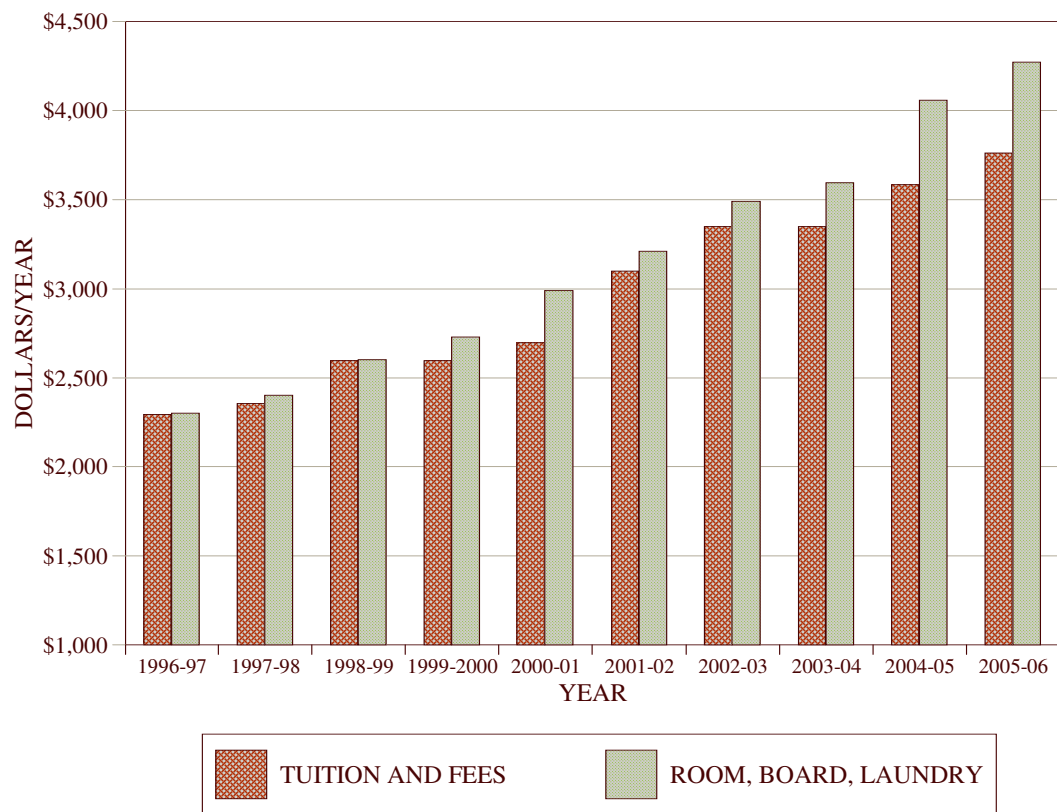
FULL-TIME STUDENTS	MS Resident Dorm Student	MS Resident Day Student	Nonresident Dorm Student	Nonresident Day Student
General Tuition	\$3,272	\$3,272	\$8,212	\$8,212
Athletic Fee	\$300	\$300	\$300	\$300
Union Fee	\$45	\$45	\$45	\$45
Technology Fee	\$40	\$40	\$40	\$40
Health Fee	\$51	\$51	\$51	\$51
Student Activity Fee	\$40	\$40	\$40	\$40
Room, Board, & Laundry	\$4,271	—	\$4,271	—
Fitness Center Equipment	\$4	\$4	\$4	\$4
One-Kard	\$10	\$10	\$10	\$10
<b>TOTAL</b>	<b>\$8,033</b>	<b>\$3,762</b>	<b>\$12,973</b>	<b>\$8,702</b>

**SPECIAL FEES**

Admissions application fee.....	\$15
Private room per semester.....	\$575
Overload Fees:	
Undergraduate - for each hour over 19.....	\$155
Graduate - for each hour over 13.....	\$205
Correspondence course fee per semester hour.....	\$165
Private music lesson fee:	
For each semester hour credit.....	\$50
Transcript .....	\$5
Late registration fee.....	\$25
Commencement/Degree fee.....	\$50
Lab fee varies by department; contact specific department for rate.	

Source: University Accounting  
Date : June 2005

# **DELTA STATE UNIVERSITY** **TUITION AND FEES\*** **1996-2005**



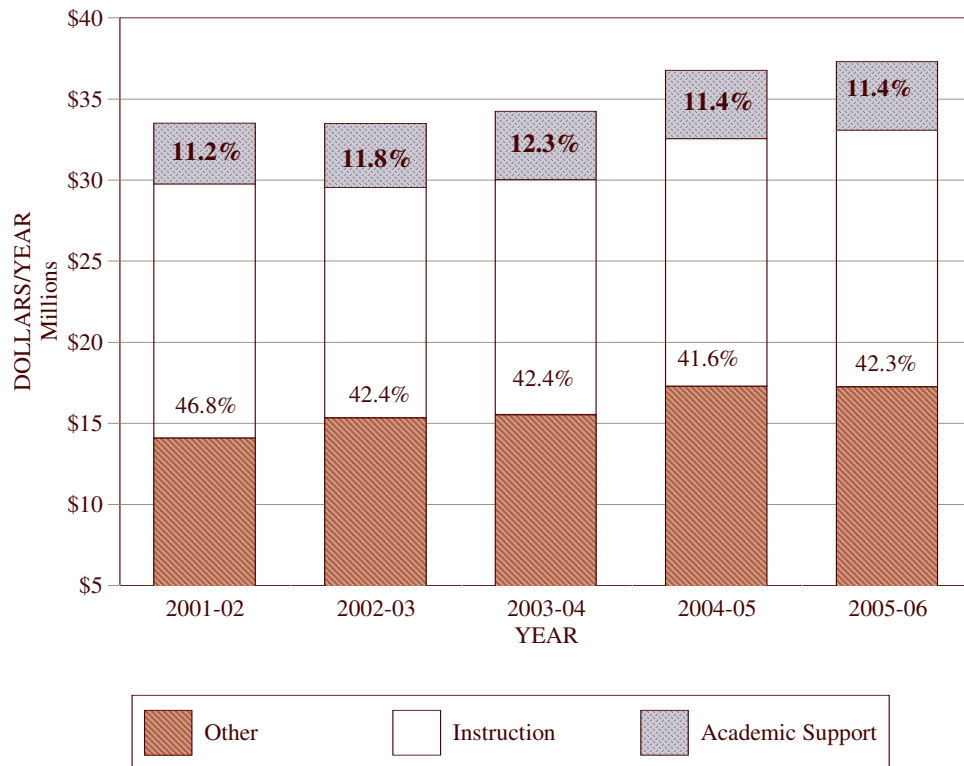
Source: University Accounting  
 Date: June 2005

\* Cost is for full-time MS resident students.

**DELTA STATE UNIVERSITY**  
**INSTRUCTION vs. TOTAL E&G**  
**5-YEAR TREND: 2001-2005**

	2001-02	2002-03	2003-04	2004-05	2005-06
Total E&G	\$33,514,872	\$33,510,440	\$34,244,835	\$36,751,194	\$37,301,256
Instruction	\$15,682,422	\$14,223,115	\$14,505,106	\$15,278,850	\$15,791,479
Acad. Support	\$3,742,182	\$3,960,137	\$4,217,724	\$4,197,176	\$4,240,935

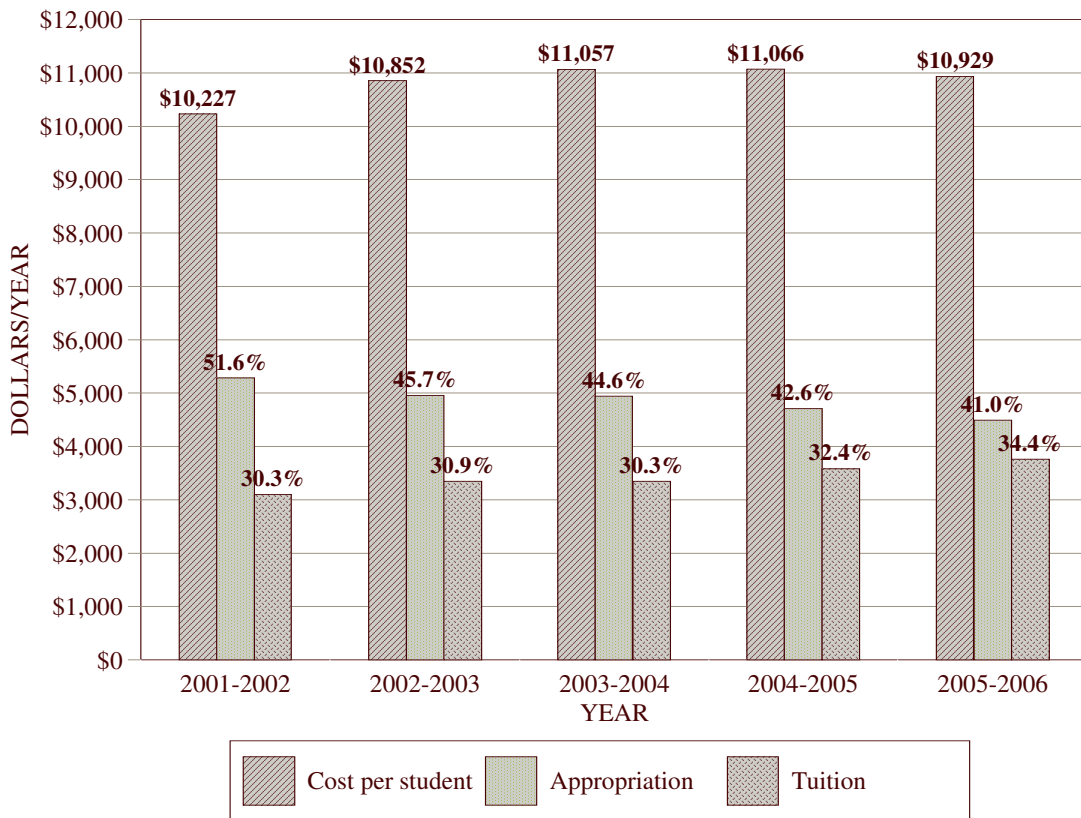
**TOTAL EDUCATION AND GENERAL EXPENDITURES**



Source: Institutional Research & Planning  
Date : June 2005

**DELTA STATE UNIVERSITY**  
**COST PER STUDENT vs. TUITION AND APPROPRIATION \***  
**5-YEAR TREND: 2001-2005**

	2001-2002	2002-2003	2003-2004	2004-2005	2005-2006
Cost per student	\$10,227	\$10,852	\$11,057	\$11,066	\$10,929
State Appropriation	\$5,281	\$4,954	\$4,936	\$4,709	\$4,486
Tuition	\$3,100	\$3,348	\$3,348	\$3,582	\$3,762



Source: Institutional Research & Planning

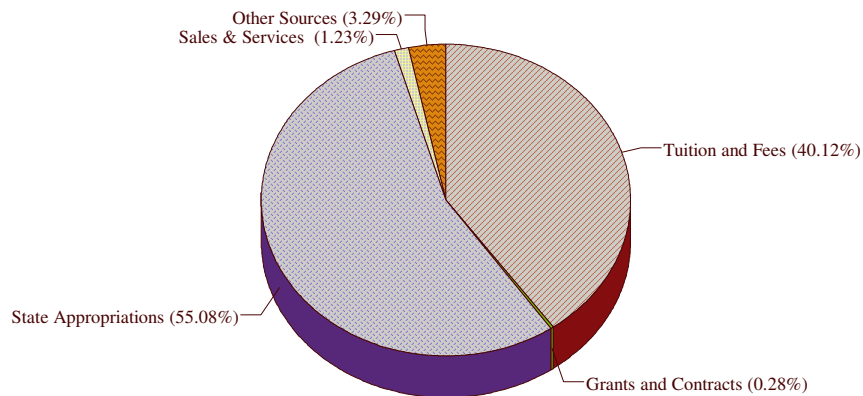
Date : January 2006

\* Cost = Edu. & General Expense Per FTE Student

**DELTA STATE UNIVERSITY  
CURRENT FUNDS REVENUES BY SOURCE  
5-YEAR PROFILE**

FISCAL YEARS	2001-2002	2002-2003	2003-2004	2004-2005	2005-2006
Tuition and Fees	\$11,177,164	\$12,555,511	\$12,912,486	\$14,179,198	\$14,965,844
State Appropriations	21,134,311	20,255,812	20,380,583	20,842,209	20,546,625
Grants and Contracts	103,000	103,000	103,000	103,000	103,000
Sales & Services	426,850	482,669	493,463	496,110	459,110
Other Sources	673,547	113,448	355,303	1,130,677	1,226,677
Total E&G	\$33,514,872	\$33,510,440	\$34,244,835	\$36,751,194	\$37,301,256
Auxiliary Enterprises	8,365,422	9,147,209	9,019,626	7,433,505	7,893,505
<b>TOTAL</b>	<b>\$41,880,294</b>	<b>\$42,657,649</b>	<b>\$43,264,461</b>	<b>\$44,184,699</b>	<b>\$45,194,761</b>

**2005-06 FUNDS REVENUES BY SOURCE**

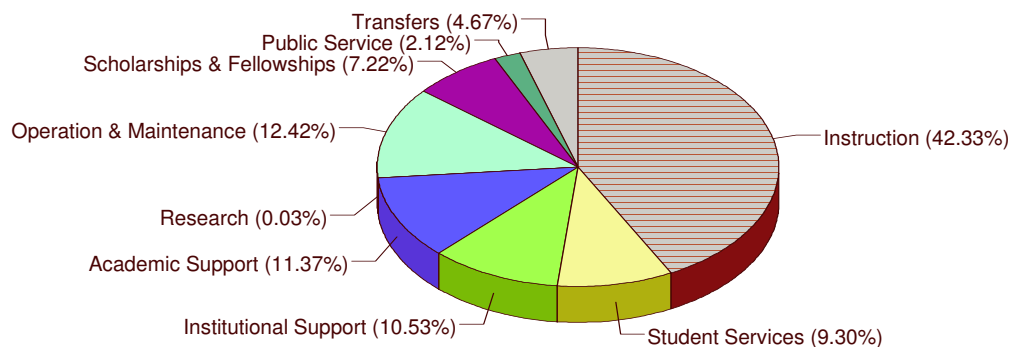


Source: IHL Analysis of Operating Budgets  
Date : June 2005

**DELTA STATE UNIVERSITY**  
**CURRENT FUNDS EXPENDITURES AND TRANSFERS BY FUNCTION**  
**5-YEAR PROFILE**

FISCAL YEARS	2001-2002	2002-2003	2003-2004	2004-2005	2005-2006
Instruction	\$15,682,422	\$14,223,115	\$14,505,106	\$15,278,850	\$15,791,479
Research	39,722	13,350	13,000	13,000	13,000
Public Service	583,914	666,378	991,698	808,170	789,687
Academic Support	3,742,182	3,960,137	4,217,724	4,197,176	4,240,935
Student Services	3,087,755	3,218,736	3,302,419	3,480,611	3,468,972
Institutional Support	3,454,088	3,692,639	3,522,893	3,913,618	3,927,050
Operation & Maint.	3,421,671	3,573,553	3,559,133	4,273,329	4,633,693
Schol. & Fellowships	2,818,316	2,999,148	3,041,370	3,044,360	2,694,360
Transfers	684,802	1,163,384	1,091,492	1,742,080	1,742,080
Total Ed. & General	33,514,872	33,510,440	34,244,835	36,751,194	37,301,256
Auxiliary Enterprises	8,365,422	9,147,209	9,019,626	7,433,505	7,893,505
<b>TOTAL</b>	<b>\$41,880,294</b>	<b>\$42,657,649</b>	<b>\$43,264,461</b>	<b>\$44,184,699</b>	<b>\$45,194,761</b>

**2005-06 FUNDS EXPENDITURES AND TRANSFERS BY FUNCTION**



Source: IHL Analysis of Operating Budgets  
Date : June 2005

**DELTA STATE UNIVERSITY**  
**ROBERTS-LaForge LIBRARY COLLECTIONS AND UTILIZATIONS**  
**2001-2005**

FISCAL YEAR	2001-02	2002-03	2003-04	2004-05	2005-06
<b>LIBRARY COLLECTIONS</b>					
Bound Volumes	331,251	334,710	345,565	357,769	360,286
Electronic Books	27,666	30,386	35,203	41,924	50,786
Microforms	795,827	809,103	828,979	831,508	831,610
Serial Subscriptions	1,330	1,292	1,268	1,280	1,258
Serial Subscriptions - Electronic	5,185	6,109	9,270	9,182	17,368
Audio Visual	16,975	18,083	18,493	19,002	19,302
<b>INTERLIBRARY LOAN</b>					
Provided to Other Libraries	1,470	1,429	1,473	1,611	1,400
Received from Other Libraries	972	918	1,077	1,410	1,271
<b>CIRCULATION TRANSACTIONS</b>					
General Collection	39,214	35,392	36,574	30,149	29,944
Reserve Collection*	6,310	4,119	1,512	2,287	11,880
Electronic Index & Full-Text Database Use	139,691	133,439	224,659	275,958	283,321

Source: Roberts-LaForge Library  
Date : June 2006

\* Includes Electronic Reserves