

FACTBOOK

2000-01



**Office of Institutional Research
and Planning**

FACTBOOK

2000-01



Office of Institutional Research and Planning

Lynda Steele, Director
Lisa Lord, Research Analyst
Brenda Vanlandingham, Secretary

PREFACE

The Delta State University *Factbook* is an annual publication that provides a ready source of information to answer questions frequently asked about the University. This edition contains a statistical overview of operations for the 2000-01 academic year. Included is information, both past and present, concerning enrollment, student characteristics, faculty characteristics, revenue, and expenditures. Its primary purpose is to promote understanding for those seeking information about Delta State University.

Most of the information in this edition was obtained from statistical reports published by the Board of Trustees of State Institutions of Higher Learning, State of Mississippi. The data submitted to the Board of Trustees for this report represents not only the work of the Office of Institutional Research & Planning but also of various administrative offices such as the Registrar and Admissions Office, Human Resources, Academic Affairs, Financial Assistance, Student Affairs, Information and Technology Services, Athletics, Public Information, Alumni Affairs, and the Library. Without their continued assistance and cooperation, this publication would not be possible. We extend to them our sincere appreciation.

The Office of Institutional Research and Planning, in its on-going effort to provide timely management information, encourages your comments and suggestions for improvement. We hope you find this edition of the *Factbook* both informative and useful.

Office of Institutional Research and Planning
Kethley 202
Delta State University
Cleveland, MS 38733

Lisa Lord
Factbook Editor

TABLE OF CONTENTS

Preface	iii
---------------	-----

I. GENERAL INFORMATION

Administrative Cabinet & Board of Trustees	2
Organizational Chart	3
University History	4
Institutional Mission	5
University Goals	6
University Characteristics	8

II. STUDENTS

New Students

Applications, Admissions, and Enrollments: Fall 2000	2
ACT Data for Entering Freshmen: 2000-01	3
ACT Scores of First-Time Entering Freshmen: Fall 2000	4
Major Feeder High Schools For ACT Tested Freshmen: 2000-01	5

Enrollment

Enrollment Summary by Semester: 2000-01	2
Enrollment Summary by Race	3
Age Distribution of Students	4
Enrollment of MS Institutions by Level	5
Enrollment of MS Institutions by Headcount and FTE	6
Enrollment Overview: 2-Year Comparison	7
College of Arts and Sciences: 3-Year Profile	8
College of Business: 3-Year Profile	9
College of Education: 3-Year Profile	10
School of Nursing: 3-Year Profile	11
Unclassified Major: 3-Year Profile	12
Enrollment Profile: 5-Year Trend	13
Enrollment by Headcount: 10-Year Trend (Graph)	14
Enrollment by Class	15
Enrollment by Gender	16
Enrollment by Race	17
Enrollment by Residency	18
Enrollment by Status	19
Enrollment by Level	20
Enrollment by School	21
Enrollment: Actual and Projected	22

Housing & Residency

Comparative Room Report: 5-Year Trend	2
Enrollment of Students by Counties: 5-Year Trend	3
Enrollment of Students by Counties: Fall 2000 (Map)	6
Enrollment of Students by States and Countries: 5-Year Trend	7
Enrollment of Students by States: Fall 2000 (Map)	9

Majors

Undergraduate Majors by Gender and Minority Status	2
Graduate Majors by Gender and Minority Status	4

Retention

Retention of First Time Entering Freshmen: by ACT Score Category	2
Retention of First-Time Entering Freshmen: All Students	3
Retention of First-Time Entering Freshmen: White Students	4
Retention of First-Time Entering Freshmen: Black Students	5

Credit Hours

Student Credit Hours Summary by Semester: 2000-01	2
Student Credit Hours Summary by Level: Fall 2000	3
Student Credit Hours Summary by Discipline and Level: Fall 2000	4
Student Credit Hours Summary by Level: 2-Year Comparison	6
Student Credit Hours Summary by College/School & Department: 5-Year Trend ..	7

Grades

Average of Grades Awarded by Discipline	2
Average of Grades Awarded by Course Type: Arts & Sciences	4
Average of Grades Awarded by Course Type: Business	5
Average of Grades Awarded by Course Type: Education	6

Miscellaneous

Intercollegiate Athletics: 2000-01	2
Financial Aid Summary: 2000-01	3

III. DEGREES GRANTED

Degrees Offered: 2000-01	2
Academic Program Inventory: 2000-01	3
Degrees Awarded by Type of Degree: 5-Year Trend	5
Degrees Conferred by CIP Category: 5-Year Trend	6
Degrees Awarded by College/School and Department: 5-Year Trend	7
Degrees Awarded by Undergraduate Majors: 2000-01	10
Degrees Awarded by Undergraduate Majors: December 2000	11
Degrees Awarded by Undergraduate Majors : May 2001	12

Degrees Granted (continued)

Degrees Awarded by Graduate Majors: 2000-01	13
Degrees Awarded by Graduate Majors: December 2000	14
Degrees Awarded by Graduate Majors: May 2001	15
Graduation with Honors: 2000-01	16
Graduation with Honors: 5-Year Trend	17

IV. FACULTY AND STAFF

Faculty Profile: University Totals - Fall 2000	2
College of Arts and Sciences	3
College of Business	4
College of Education	5
School of Nursing	6
Pupil-Teacher Ratio	7
Faculty Characteristics: 10-Year Trend	8
Mean Salaries of Faculty by Rank	9
Distribution of Employees (Graph)	10

V. RESOURCES

Tuition and Fees: 2000-01	2
Tuition and Fees: 10-Year Trend (Graph)	3
Instruction vs. Total E&G: 5-Year Trend	4
Cost Per Student vs. Tuition and Appropriation: 5-Year Trend	5
Current Funds Revenues by Source: 5-Year Profile	6
Current Funds Expenditures by Function: 5-Year Profile	7
W.B. Roberts Library Holdings and Circulation	8

DELTA STATE UNIVERSITY

Administrative Cabinet

2000-01

Dr. David Potter
President

Dr. Wayne Blansett
Vice President for Student Affairs

Dr. James Jordan
Athletic Director

Dr. Frank McArthur
Vice President for Academic Affairs

Dr. Leroy Morganti
Vice President for Executive Affairs
and Chief of Staff

Dr. Robert Nettles
Vice President for Business Affairs

Dr. Michelle Roberts
Chief Information and Planning
Officer

Dr. Don Skelton
Associate Vice President for Univ.
Advancement

Dr. John Thornell
Associate Vice President for
Academic Affairs

INSTITUTIONS OF HIGHER LEARNING

Board of Trustees

2000-01

Mr. Carl Nicholson, Jr.
President, Hattiesburg

Mr. William S. Crawford
Vice President, Meridian

Mr. Thomas W. Colbert
Brandon

Dr. L. Stacy Davidson, Jr.
Cleveland

Ms. Ricki R. Garrett
Clinton

Mr. Bryce Griffis
Starkville

Mr. James Roy Klumb
Gulfport

Dr. D. E. Magee, Jr.
Jackson

Dr. Bettye Henderson Neely
Grenada

Ms. Virginia Shanteau Newton
Gulfport

Mr. Scott Ross
West Point

Ms. Amy Whitten
Oxford

Dr. Thomas D. Layzell, Commissioner of Higher Education
3825 Ridgewood Road
Jackson, MS 39211-6453
(601) 432-6623 [phone]
(601) 432-6972 [fax]

DELTA STATE UNIVERSITY

HISTORICAL SKETCH

Delta State University was created as Delta State Teachers College by Senate Bill Number 263, Chapter 284, entitled An Act to Create and Establish the Delta State Teachers College. Governor Henry L. Whitfield signed the bill on April 9, 1924. Cleveland and Bolivar County provided the College's first physical facilities in the form of three buildings that formerly housed the Bolivar County Agricultural High School. The institution opened for its first regular session on September 15, 1925, with a faculty and staff of eleven and a student body of ninety-seven.

The College's first president, Mr. James Wesley Broom, died during Delta State's first session. He was succeeded by Dr. W. M. Kethley, who served as president from 1926 to 1956. Dr. James M. Ewing became the third president on September 1, 1956, and served until his retirement on July 31, 1971. Dr. Aubrey K. Lucas served as the institution's fourth president from August 1, 1971, until June 30, 1975. On July 1, 1975, Dr. Forest Kent Wyatt became the fifth president, and he served until his retirement on June 30, 1999. He was succeeded by Dr. David L. Potter on July 1, 1999.

The growth and expanding mission of the institution were evidenced by its name change in 1955 to Delta State College. In 1969 Delta State was authorized to reorganize its academic structure into four schools. The School of Arts and Sciences and the School of Business were activated in 1969 and the School of Education and School of Graduate Studies were implemented in 1970. A School of Nursing was authorized in 1977 and began operation in 1978. On March 15, 1974, the institution was officially designated Delta State University to reflect its continued growth and expanded scope.

When created in 1925, Delta State was authorized to offer only the Bachelor of Science degree in Education. The first such degrees were conferred in June 1928. Undergraduate degrees are now offered in the arts, sciences, humanities, business, nursing, commercial aviation and education.

In 1965, the University initiated a graduate program and the first Master of Education degrees were conferred in May, 1966. Delta State University now offers Master's degrees in the areas of business, commercial aviation, education, natural and social sciences, and nursing, as well as the Educational Specialist degree and Doctor of Education in professional studies.

From a small teacher-training institution in the 1920's, Delta State has grown into a multi-purpose university which focuses strongly on quality classroom instruction. Enrollment has increased to more than 4,000 students, and corresponding growth has occurred in physical facilities. The growth and success of the University are tributes to the dedication of the faculty and staff, the hard work of the students, and the strong support of the Delta community and state legislature.

DELTA STATE UNIVERSITY

Institutional Mission

Delta State University, a regional university in Cleveland, Mississippi, serves as an educational and cultural center of the Mississippi Delta. The University offers broad undergraduate, graduate, and continuing education programs of study leading to degrees at the baccalaureate through doctoral levels. Emphasis is placed on excellence in instruction, followed by service and research, in the creation of a community of scholars. With special attention to small classes, a friendly environment, and a broad liberal arts foundation, the University encourages significant student-faculty interactions. Delta State provides programs and services which promote intellectual, cultural, ethical, physical, and social development. Students from a broad range of cultural, socioeconomic, and ethnic backgrounds have the opportunity to develop the ability to respect and evaluate the thoughts of others; to develop, assess, and express their own thoughts effectively; and to use the techniques of research and performance associated with their disciplines.

Approved by the Board of Trustees of State Institutions of Higher Learning, February 19, 1998.

DELTA STATE UNIVERSITY

UNIVERSITY GOALS

Delta State University strives to fulfill the following goals:

Instruction

1. Review and update undergraduate and graduate programs to address adequately basic skills, knowledge, and competencies necessary for students to be prepared properly in their chosen fields, to complete licensure requirements, enter the work force, and/or continue advanced study in graduate or professional school.
2. Attract and retain qualified and diverse students, faculty, and staff.
3. Promote faculty development through a comprehensive program designed to strengthen the faculty in teaching, service, and research.
4. Provide sufficient faculty in all disciplines to maintain a student-teacher ratio that ensures opportunities for meaningful intellectual interaction between students and faculty.
5. Accommodate non-traditional students and the general public by offering a comprehensive program of continuing education, including off-campus classes, independent study courses, non-credit courses, conferences, and workshops.
6. Optimize the effective use of technology in support of the education process.

Service

7. Strengthen the cooperative relationships with business, industry, community groups, government, and other educational institutions.

Research

8. Enhance educational experiences at all levels by encouraging student and faculty research and other creative work.

Support Operations

9. Provide a rich campus life with a variety of cultural and extracurricular activities and other opportunities for personal development.
10. Increase student retention and graduation rates by providing a support program which includes, but is not limited to, the following attributes: a comprehensive support program of advising and other services to enhance student development; increased financial support to students through scholarships, assistantships, grants, and loans; a developmental studies program for under-prepared students; and, opportunities to meet or communicate with prospective employers or admission personnel from graduate or professional schools.

11. Provide the resources, facilities and the physical environment which contribute to the intellectual, cultural, ethical, physical, and social growth and development of the student and of the surrounding community.
12. Provide administrative services and auxiliary enterprises (student housing, bookstore, food services, etc.) which are effective and efficient in the support of the institutional mission.
13. Provide opportunities for the professional and personal development of staff.

External Affairs

14. Expand the pursuit of external funding for instruction, public service, research, student financial assistance, and other needs.
15. Increase the involvement of alumni in the life and support of the University.

*Approved by the Planning and Institutional Effectiveness Committee
October 30, 1996*

Approved by the Cabinet - May 5, 1997

UNIVERSITY CHARACTERISTICS

Location

Delta State University is located in Cleveland, Mississippi, in the heart of the Mississippi Delta. The campus consists of 331.54 acres of land within or adjoining the western corporate limits. Cleveland is considered a rural city with a population of 13,841 and is situated in Bolivar County, which has a population of 41,875. The nearest urban city is 110 miles north in Memphis, TN. The nearest international airport is also located in Memphis. Regional airport facilities are located in Greenville, MS which is 40 miles southwest of Cleveland, and the nearest municipal airport is located within Cleveland's city limits.

Academic Year

The University operates on the semester system with the fall semester beginning in late August and ending before Christmas. The spring semester begins in January and ends in May. There are two five-week summer sessions.

Enrollment

The total on-campus enrollment for Fall 2000 was 3,782. The total off-campus enrollment for Fall 2000 was 134: 53 in Greenville, 81 in other locations. Students came from 28 states and 7 foreign countries.

Student Fees

Tuition and fees for Mississippi residents are \$1,348 and for non-residents \$3,206 per semester. Dorm student's fees are \$1,460 per semester.

Student Characteristics

Average age of Freshmen - 19

Average age of Undergraduates - 25

FTE Student/Faculty ratio - 13 to 1

Housing

The University has 14 residence halls with a capacity of 1,621. There are eight national fraternities and six national sororities. Approximately 17% of the undergraduate men are members of a fraternity and 13% of the women are members of a sorority.

Athletics

The University is a member of the National Collegiate Athletic Association (NCAA) at the Division II level.

Accreditation

Delta State University is accredited by the Commission on Colleges of the Southern Association of Colleges and Schools to award bachelors, masters, specialists and doctoral degrees.

Degrees

The University offers 12 Bachelor's degrees, nine Master's degrees, one Specialist degree and one Doctoral degree. In 2000-01, DSU awarded 600 bachelor's degrees, 186 master's, 14 specialist's, and 2 doctoral.

Faculty

DSU employed 290 faculty in the Fall 2000 of which 182 were full-time and 108 part-time. Fifty-one percent held Doctoral degrees.

Library

The W.B. Roberts Library collections consist of 312,631 bound volumes and U.S. government documents combined, 754,713 microforms, and 1,365 subscriptions.

Fine Arts

The Fielding Wright Art Center houses the art department and contains three galleries for hanging exhibitions. The Holcombe-Norwood addition to the art center was opened in Fall, 1994 and the Bologna Performing Arts Center was completed in Spring, 1995.

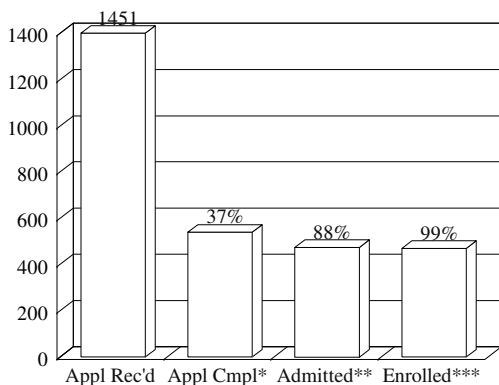
Computer Labs

Jobe Hall	31 microcomputers
Union	12 microcomputers
Ewing Hall	41 microcomputers
Walters Hall	10 microcomputers
Nursing	15 microcomputers
Broom Hall	52 microcomputers
Library	52 microcomputers

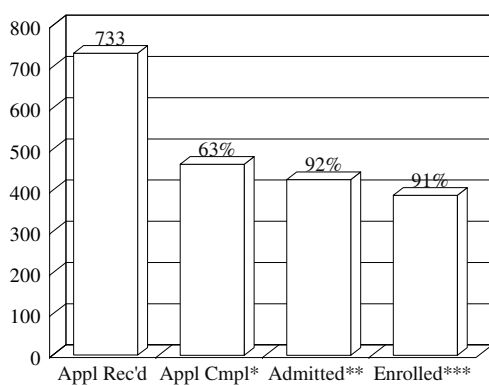
DELTA STATE UNIVERSITY
NEW STUDENT APPLICATIONS, ADMISSIONS, AND ENROLLMENTS
FALL 2000

	Number of Applications Received						Number of Completed Applications						Number Admitted						Number Enrolled					
	Freshman		CC-Transfer		SC-Transfer		Freshman		CC-Transfer		SC-Transfer		Freshman		CC-Transfer		SC-Transfer		Freshman		CC-Transfer		SC-Transfer	
	#	%	#	%	#	%	#	%	#	%	#	%	#	%	#	%	#	%	#	%	#	%	#	%
In-State	1175	81%	698	95%	199	73%	462	86%	449	97%	100	88%	407	86%	412	97%	96	87%	392	83%	376	97%	84	87%
Out-of-State	276	19%	35	5%	73	27%	78	14%	14	3%	14	12%	68	14%	14	3%	14	13%	79	17%	12	3%	13	13%
Male	547	38%	282	38%	109	40%	213	39%	188	41%	45	40%	186	39%	179	42%	43	39%	192	41%	147	38%	48	49%
Female	904	62%	451	62%	163	60%	327	61%	275	59%	69	61%	289	61%	247	58%	67	61%	279	59%	241	62%	49	51%
White	770	53%	434	59%	129	47%	352	65%	295	64%	60	53%	337	71%	278	65%	58	53%	339	72%	252	65%	59	61%
Black	664	46%	287	39%	125	46%	185	34%	166	36%	52	46%	134	28%	147	35%	51	46%	129	27%	132	34%	37	38%
Other	17	1%	12	2%	18	7%	3	1%	2	0%	1	1%	4	1%	1	0%	1	1%	3	1%	4	1%	1	1%
TOTAL	1451	100.0%	733	100.0%	272	100.0%	540	100.0%	463	100.0%	113	100.0%	475	100.0%	426	100.0%	110	100.0%	471	100.0%	388	100.0%	97	100.0%

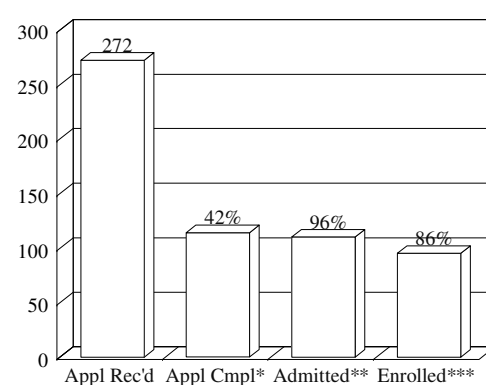
FRESHMEN



CC-TRANSFERS



SC-TRANSFERS



Source: Office of Admissions
Office of Institutional Research and Planning
Date : October 2000

* The number of applicants completing the process for admission consideration
** The number of applicants admitted is reported as a % of the completed applications
*** The number of applicants enrolled is reported as a % of the number of applicants admitted

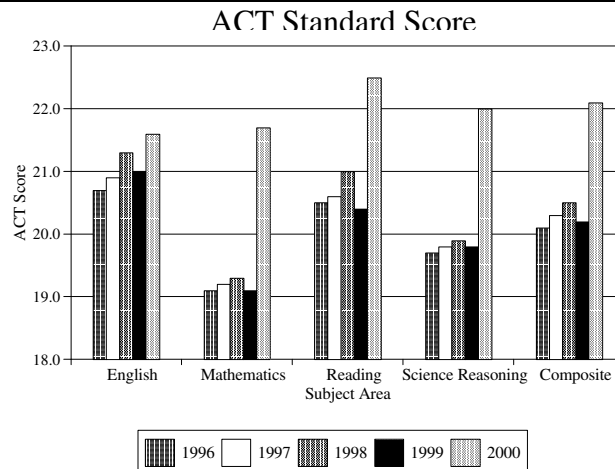
DELTA STATE UNIVERSITY

ACT DATA FOR ENTERING FRESHMEN

2000-01

Reference Score Values	ACT Scores				
	English	Math	Reading	Science Reasoning	Composite
Seventy-fifth percentile	25.2	25.4	26.5	24.7	25.2
Median	21.5	21.1	22.3	21.9	21.9
Twenty-fifth percentile	18.1	17.7	18.2	19.0	18.8
Overall mean	21.6	21.7	22.5	22.0	22.1
Standard deviation	5.2	5.0	5.8	4.4	4.5

College Freshmen Trends	1996	1997	1998	1999	2000	Nat'l Avg.
<i>ACT Composite Score</i>						
English	20.7	20.9	21.3	21.0	21.6	21.3
Mathematics	19.1	19.2	19.3	19.1	21.7	21.2
Reading	20.5	20.6	21.0	20.4	22.5	22.0
Science Reasoning	19.7	19.8	19.9	19.8	22.0	21.5
Composite	20.1	20.3	20.5	20.2	22.1	21.6
<i>High School Grades</i>						
English	3.16	3.17	3.19	3.15	3.36	3.29
Mathematics	2.99	3.02	3.04	2.99	3.17	3.10
Social Studies	3.29	3.27	3.34	3.33	3.44	3.38
Natural Sciences	3.12	3.12	3.15	3.14	3.28	3.22
Average of grades	3.18	3.18	3.18	3.19	3.31	3.25



Source: ACT Class Profile Service Report
Date : November 2000

DELTA STATE UNIVERSITY
ACT SCORES OF FIRST-TIME ENTERING FRESHMEN
FALL 2000

Score	English	Math	Reading	Science Reasoning	Composite	Old ACT	SAT Conv.	Total
36	0	0	0	0	0	0	0	0
35	0	0	1	0	0	0	0	0
34	2	0	0	0	0	0	0	0
33	2	0	5	0	0	0	0	0
32	0	0	4	1	1	0	0	1
31	2	0	1	1	0	0	0	0
30	4	1	4	2	1	0	0	1
29	5	1	6	1	3	1	0	4
28	15	3	12	3	3	0	0	3
27	14	7	14	5	5	0	1	6
26	20	9	14	14	16	0	1	17
25	19	13	12	9	18	0	1	19
24	16	3	30	23	18	1	0	19
23	17	13	14	21	20	0	2	22
22	24	22	21	37	28	0	1	29
21	40	21	46	40	38	1	1	40
20	42	30	36	52	36	1	3	40
19	45	47	37	48	66	1	0	67
18	26	56	22	53	52	1	0	53
17	44	73	43	42	52	1	0	53
16	44	51	28	36	41	2	0	43
15	25	49	25	21	22	0	0	22
14	8	15	24	7	7	0	0	7
13	5	9	19	8	2	0	0	2
12	7	4	7	1	0	1	0	1
11	3	2	3	3	0	0	0	0
10	0	0	0	1	0	0	0	0
9	0	0	1	0	0	0	0	0
8	-	-	-	-	-	-	-	-
7	-	-	-	-	-	-	-	-
6	-	-	-	-	-	-	-	-
5	-	-	-	-	-	-	-	-
4	-	-	-	-	-	-	-	-
3	-	-	-	-	-	-	-	-
2	-	-	-	-	-	-	-	-
1	-	-	-	-	-	-	-	-
STUDENTS	429	429	429	429	429	10	10	449
MEAN	20.235	18.361	20.007	19.620	19.683	19.200	22.700	19.739

Source: IHL Statistical Reports

Date : October 2000

DELTA STATE UNIVERSITY
MAJOR FEEDER HIGH SCHOOLS FOR ACT TESTED FRESHMEN
FRESHMAN CLASS: 2000-01

HIGH SCHOOL	LOCATION	ENROLLED	
		NUMBER	AVG. ACT
Cleveland High School	Cleveland, MS	38	20.3
Washington School	Greenville, MS	22	24.5
Bayou Academy	Cleveland, MS	20	22.4
Lee Academy	Clarksdale, MS	12	18.3
South Panola High School	Batesville, MS	11	20.1
Kirk Academy	Grenada, MS	8	21.1
Warren Central High School	Vicksburg, MS	7	20.4
Clarksdale High School	Clarksdale, MS	6	19.8
Grenada High School	Grenada, MS	6	22.7
Sharkey Issaquena Academy	Rolling Fork, MS	6	21.2
West Bolivar District High School	Rosedale, MS	6	17.0
Christian Brothers High School	Memphis, TN	6	22.2
Northwest Rankin High School	Brandon, MS	5	18.4
East Side High School	Cleveland, MS	5	21.6
Cruger-Tchula Academy	Cruger, MS	5	22.0
North Sunflower Academy	Drew, MS	5	24.6
Water Valley High School	Water Valley, MS	5	16.0
Saint Josephs High School	Greenville, MS	4	17.0
T L Weston High School	Greenville, MS	4	18.5
Horn Lake High School	Horn Lake, MS	4	18.3
Indianola Academy	Indianola, MS	4	23.5
Southern Baptist Educational Center	Southaven, MS	4	19.8
Ridgeway Jr-Sr High School	Memphis, TN	4	19.5
John Ehret High School	Marrero, LA	3	—.-
Brandon High School	Brandon, MS	3	—.-
Coahoma County High School	Clarksdale, MS	3	—.-
Clinton High School	Clinton, MS	3	—.-
Greenville High School	Greenville, MS	3	—.-
Simmons High School	Hollandale, MS	3	—.-
Terry High School	Terry, MS	3	—.-

Source: ACT Class Profile Report
Date : November 2000

DELTA STATE UNIVERSITY
ON-CAMPUS ENROLLMENT SUMMARY BY SEMESTER
2000-01

	SUMMER 2000		FALL 2000		SPRING 2001	
	#	%	#	%	#	%
STATUS-HEADCOUNT						
Full-time	*	*	2,914	77.0%	2,768	78.5%
Part-time	*	*	868	23.0%	761	21.6%
STATUS-FTE						
Full-time	*	*	2,891	91.3%	2,760	91.4%
Part-time	*	*	275	8.7%	261	8.6%
RACE						
White	966	61.7%	2,610	69.0%	2,364	67.0%
Black	581	37.1%	1,133	30.0%	1,128	32.0%
Other	19	1.2%	39	1.0%	37	1.0%
GENDER						
Female	1,043	66.6%	2,299	60.8%	2,145	60.8%
Male	523	33.4%	1,483	39.2%	1,384	39.3%
LEVEL						
Lower	259	16.5%	1,402	37.1%	1,095	31.1%
Upper	858	54.8%	1,881	49.7%	1,942	55.1%
Graduate	449	28.7%	499	13.2%	492	14.0%
RESIDENCY						
Resident of MS	1,497	95.6%	3,488	92.2%	3,262	92.5%
Non-resident of MS	69	4.4%	294	7.8%	267	7.6%
SCHOOL						
Arts & Sciences	271	17.3%	839	22.2%	836	23.7%
Business	392	25.0%	1,040	27.5%	956	27.1%
Education	587	37.5%	1,192	31.5%	1,148	32.6%
Nursing	55	3.5%	165	4.4%	142	4.0%
Undeclared	261	16.7%	546	14.4%	444	12.6%
TOTAL-HEADCOUNT	1,566	100.0%	3,782	100.0%	3,526	100.0%
TOTAL-FTE	728	100.0%	3,166	100.0%	3,021	100.0%

Source: Institutional Research and Planning
Date : March 2001

* Full-time and part-time status is
not defined for the summer term.

DELTA STATE UNIVERSITY
ENROLLMENT SUMMARY OF STUDENTS BY RACE
FALL 2000

	White		Black		Other		TOTAL	
	#	%	#	%	#	%	#	%
Male	1,154	78%	314	21%	15	1%	1,483	39%
Female	1,456	63%	819	36%	24	1%	2,299	61%
Freshman*	649	72%	245	27%	5	1%	899	24%
Sophomore*	386	73%	140	26%	4	0.8%	530	14%
Junior*	543	68%	244	31%	7	0.9%	794	21%
Senior*	754	71%	289	27%	17	2%	1,060	28%
Total Undergraduate	2,332	71%	918	28%	33	1%	3,283	87%
Master & Specialist	254	55%	207	45%	4	1%	465	12%
Doctoral	24	71%	9	26%	1	3%	34	1%
Total Graduate	278	56%	216	43%	5	1%	499	13%
<u>Graduates-2000-01</u>								
Bachelor	437	73%	154	26%	7	1%	598	75%
Master	117	63%	67	36%	2	1%	186	23%
Ed. Specialist	2	14%	12	86%	0	0%	14	2%
Doctoral	1	50%	1	50%	0	0%	2	0%
Total	557	70%	234	29%	9	1%	800	100%
Full-time	2,003	69%	883	30%	28	1%	2,914	77%
Part-time	607	70%	250	29%	11	1%	868	23%
In-State	2,382	68%	1,072	31%	34	1%	3,488	92%
Out-of- State	228	78%	61	21%	5	2%	294	8%
GRAND TOTAL	2,610	69%	1,133	30%	39	1%	3,782	100%

Source: IHL Statistical Report
Date : October 2000

* Classification estimated

DELTA STATE UNIVERSITY
AGE DISTRIBUTION OF STUDENTS*
FALL 2000

	FULL-TIME						PART-TIME						UNIVERSITY			
	UNDERGRADUATE			GRADUATE			UNDERGRADUATE			GRADUATE						
AGE	Men	Women	Total	Men	Women	Total	Men	Women	Total	Men	Women	Total	Men	Women	Total	%
Under 18	3	5	8	0	0	0	10	4	14	0	0	0	13	9	22	0.6%
18-19	273	426	699	0	0	0	7	5	12	0	0	0	280	431	711	18.2%
20-21	403	639	1042	1	2	3	14	18	32	0	0	0	418	659	1077	27.5%
22-24	321	359	680	44	49	93	42	57	99	8	45	53	415	510	925	23.6%
25-29	76	87	163	19	23	42	41	43	84	30	62	92	166	215	381	9.7%
30-34	18	51	69	4	9	13	20	50	70	18	36	54	60	146	206	5.3%
35 - 39	6	21	27	6	5	11	8	38	46	17	26	43	37	90	127	3.2%
40 - 49	6	27	33	1	12	13	22	74	96	11	69	80	40	182	222	5.7%
50 - 64	3	8	11	0	7	7	40	70	110	5	21	26	48	106	154	3.9%
65 and over	0	0	0	0	0	0	24	65	89	2	0	2	26	65	91	2.3%
Unknown	0	0	0	0	0	0	0	0	0	0	0	0	0	0	0	0.0%
TOTAL	1109	1623	2732	75	107	182	228	424	652	91	259	350	1503	2413	3916	100%

Source: Institutional Research and Planning

Date : November 2000

* On-campus and Off-campus Enrollment of Undergraduates and Graduates

DELTA STATE UNIVERSITY
ENROLLMENT OF MS INSTITUTIONS BY LEVEL
FALL 2000

INSTITUTION	Freshman	Sophomore	Junior	Senior	Total Undergrad.	Graduate	TOTAL
Alcorn State University	945	490	448	515	2,398	538	2,936
Delta State University (estimated)	899	530	794	1,060	3,283	499	3,782
Jackson State University	1,578	1,024	1,147	1,674	5,423	1,348	6,771
MS State University*	2,831	2,161	3,159	4,667	12,818	2,946	15,764
MS University for Women	687	302	445	1,098	2,532	148	2,680
MS Valley State University	821	427	432	628	2,308	211	2,519
University of Mississippi**	2,512	1,718	2,190	2,833	9,253	2,152	11,405
University of Southern MS	<u>1,886</u>	<u>1,533</u>	<u>2,853</u>	<u>4,519</u>	<u>10,791</u>	<u>2,027</u>	<u>12,818</u>
TOTAL	12,159	8,185	11,468	16,994	48,806	9,869	58,675

Source: IHL Fall 2000 Enrollment Factbook
Date : November 2000

* Includes Veterinary students

** Excludes Medical School located in Jackson

Includes Law School, fifth-year Pharmacy, and fifth-year Engineering enrollments

DELTA STATE UNIVERSITY
ENROLLMENT OF MS INSTITUTIONS BY HEADCOUNT AND FULL-TIME EQUIVALENT
FALL 2000

INSTITUTION	Headcount				Full-time Equivalent				
	Full Time	Part Time	Total	Percent Part Time	Lower	Upper	Graduate	Total	F.T.E Percent of Headcount
Alcorn State University	2,387	549	2,936	18.7%	1,435	952	305	2,692	91.7%
Delta State University	2,915	1,001	3,916	25.6%	1,065	1,854	281	3,200	81.7%
Jackson State University	5,418	1,414	6,832	20.7%	2,490	2,660	839	5,988	87.6%
MS State University	13,400	3,161	16,561	19.1%	4,659	7,300	2,164	14,123	85.3%
MS University for Women	1,647	1,168	2,815	41.5%	660	1,178	94	1,932	68.6%
MS Valley State University	2,055	632	2,687	23.5%	1,169	1,017	129	2,315	86.2%
University of Mississippi	10,352	1,882	12,234	15.4%	4,072	4,890	2,014	10,976	89.7%
University of Southern MS	<u>11,566</u>	<u>2,943</u>	<u>14,509</u>	<u>20.3%</u>	<u>3,388</u>	<u>7,761</u>	<u>1,639</u>	<u>12,788</u>	<u>88.1%</u>
TOTAL	49,740	12,750	62,490	20.4%	18,938	27,612	7,464	54,014	86.4%

Source: IHL Fall 2000 Enrollment Fact Book

Date : November 2000

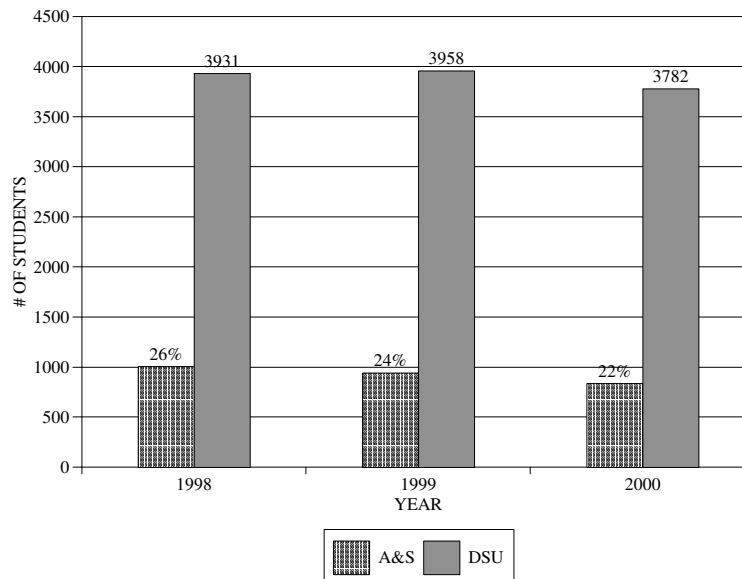
**DELTA STATE UNIVERSITY
ENROLLMENT OVERVIEW
TWO-YEAR FALL COMPARISON**

	FALL 1999		FALL 2000	
	#	%	#	%
TOTAL UNIVERSITY	3,958	100.0%	3,782	100.0%
Full-time	3,067	77.5%	2,914	77.0%
Part-time	891	22.5%	868	23.0%
FTE	3,357		3,167	
Total Undergraduate	3,430	86.7%	3,283	86.8%
Total Graduate	528	13.3%	499	13.2%
Freshmen*	937	23.7%	899	23.8%
Sophomores*	554	14.0%	530	14.0%
Juniors*	831	21.0%	794	21.0%
Seniors*	1,108	28.0%	1,060	28.0%
Masters	484	12.2%	428	11.3%
Specialists	21	0.5%	37	1.0%
Doctoral	23	0.6%	34	0.9%
First-time Freshmen	465	11.7%	471	12.5%
Returning Students	2,062	52.1%	1,867	49.4%
Readmitted Students	62	1.6%	169	4.5%
Transfer Students	616	15.6%	588	15.5%
Returning Graduate Students	418	10.6%	431	11.4%
Transient	0	0.0%	0	0.0%
High School Students	37	0.9%	26	0.7%
Non-Formula Students ("over 21")	45	1.1%	31	0.8%
First-Time Graduate Students	253	6.4%	199	5.3%
In-State	3,681	93.0%	3,488	92.2%
Out-of-State	277	7.0%	294	7.8%
Men	1,540	38.9%	1,483	39.2%
Women	2,391	60.4%	2,299	60.8%
Caucasian	2,784	70.3%	2,610	69.0%
Asian	33	0.8%	22	0.6%
Black	1,118	28.2%	1,133	30.0%
American Indian	11	0.3%	8	0.2%
Hispanic	12	0.3%	9	0.2%

Source: Institutional Research and Planning * Classification estimated
Date : October 2000

DELTA STATE UNIVERSITY 3-YEAR ENROLLMENT PROFILE COLLEGE OF ARTS AND SCIENCES

FALL SEMESTER	1998		1999		2000		3-YR CHANGE	
	#	%	#	%	#	%	#	%
STATUS								
Full-time	900	89%	854	91%	755	90%	-145	-16%
Part-time	106	11%	89	9%	84	10%	-22	-21%
GENDER								
Female	601	60%	570	60%	514	61%	-87	-14%
Male	405	40%	373	40%	325	39%	-80	-20%
RESIDENCY								
In-State	940	93%	883	94%	779	93%	-161	-17%
Out-of-State	66	7%	60	6%	60	7%	-6	-9%
CLASSIFICATION								
Freshmen*	198	20%	194	21%	198	24%	0	0%
Sophomores*	182	18%	156	17%	113	13%	-69	-38%
Juniors*	250	25%	237	25%	220	26%	-30	-12%
Seniors*	335	33%	310	33%	253	30%	-82	-24%
Graduates	41	4%	46	5%	55	7%	14	34%
School Total	1006	26%	943	24%	839	22%	-167	-17%
DSU TOTAL	3931	100%	3958	100%	3782	100%	-149	-3.8%

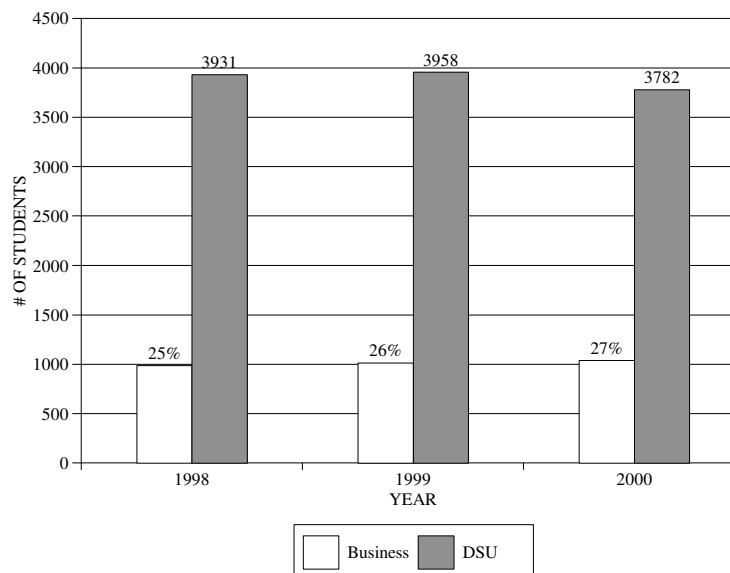


Source: IHL Statistical Report
Date : October 2000

* Classification estimated

DELTA STATE UNIVERSITY 3-YEAR ENROLLMENT PROFILE COLLEGE OF BUSINESS

FALL SEMESTER	1998		1999		2000		3-YR CHANGE	
	#	%	#	%	#	%	#	%
STATUS								
Full-time	758	76%	803	79%	821	79%	63	8%
Part-time	233	24%	212	21%	219	21%	-14	-6%
GENDER								
Female	460	46%	469	46%	461	44%	1	0%
Male	531	54%	546	54%	579	56%	48	9%
RESIDENCY								
In-State	921	93%	935	92%	944	91%	23	2%
Out-of-State	70	7%	80	8%	96	9%	26	37%
CLASSIFICATION								
Freshmen*	193	19%	198	20%	207	20%	14	7%
Sophomores*	141	14%	153	15%	197	19%	56	40%
Juniors*	246	25%	231	23%	240	23%	-6	-2%
Seniors*	286	29%	300	30%	283	27%	-3	-1%
Graduates	125	13%	133	13%	113	11%	-12	-10%
School Total	991	25%	1015	26%	1040	27%	49	5%
DSU TOTAL	3931	100%	3958	100%	3782	100%	-149	-3.8%

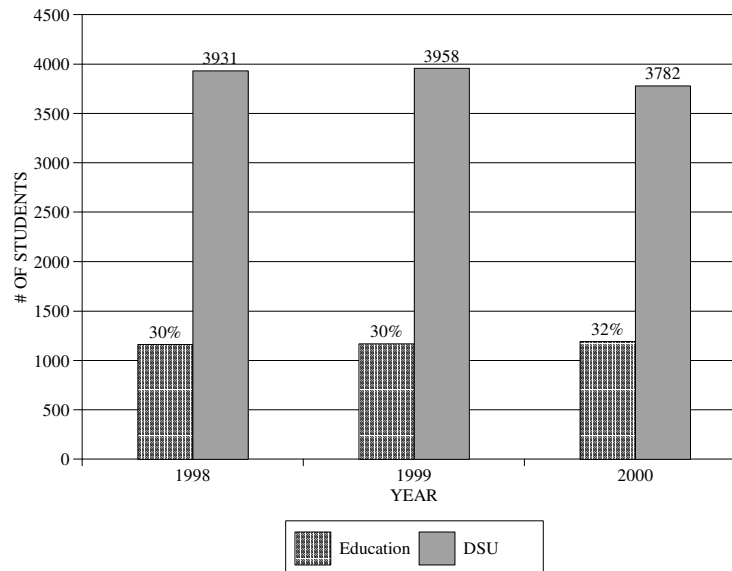


Source: IHL Statistical Report
Date : October 2000

* Classification estimated

DELTA STATE UNIVERSITY 3-YEAR ENROLLMENT PROFILE COLLEGE OF EDUCATION

FALL SEMESTER	1998		1999		2000		3-YR CHANGE	
	#	%	#	%	#	%	#	%
STATUS								
Full-time	944	81%	976	83%	961	81%	17	2%
Part-time	221	19%	193	17%	231	19%	10	5%
GENDER								
Female	843	72%	833	71%	862	72%	19	2%
Male	322	28%	336	29%	330	28%	8	2%
RESIDENCY								
In-State	1077	92%	1077	92%	1101	92%	24	2%
Out-of-State	88	8%	92	8%	91	8%	3	3%
CLASSIFICATION								
Freshmen*	142	12%	171	15%	151	13%	9	6%
Sophomores*	154	13%	139	12%	135	11%	-19	-12%
Juniors*	260	22%	256	22%	258	22%	-2	-1%
Seniors*	374	32%	370	32%	399	33%	25	7%
Graduates	235	20%	233	20%	249	21%	14	6%
School Total	1165	30%	1169	30%	1192	32%	27	2%
DSU TOTAL	3931	100%	3958	100%	3782	100%	-149	-3.8%

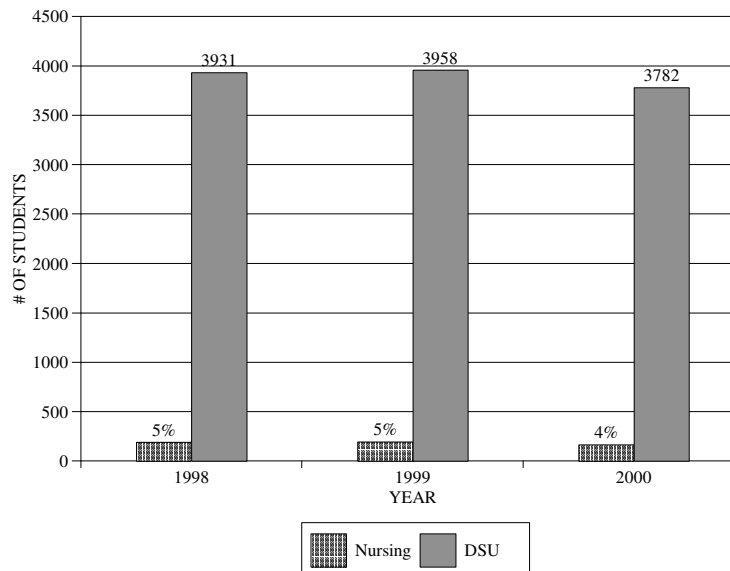


Source: IHL Statistical Report
Date : October 2000

* Classification estimated

DELTA STATE UNIVERSITY 3-YEAR ENROLLMENT PROFILE SCHOOL OF NURSING

FALL SEMESTER	1998		1999		2000		3-YR CHANGE	
	#	%	#	%	#	%	#	%
STATUS								
Full-time	158	82%	161	82%	133	81%	-25	-16%
Part-time	34	18%	35	18%	32	19%	-2	-6%
GENDER								
Female	167	87%	173	88%	145	88%	-22	-13%
Male	25	13%	23	12%	20	12%	-5	-20%
RESIDENCY								
In-State	178	93%	188	96%	157	95%	-21	-12%
Out-of-State	14	7%	8	4%	8	5%	-6	-43%
CLASSIFICATION								
Freshmen*	40	21%	45	23%	33	20%	-7	-18%
Sophomores*	36	19%	30	15%	16	10%	-20	-56%
Juniors*	28	15%	37	19%	27	16%	-1	-4%
Seniors*	55	29%	53	27%	57	35%	2	4%
Graduates	33	17%	31	16%	32	19%	-1	0%
School Total	192	5%	196	5%	165	4%	-27	-14%
DSU TOTAL	3931	100%	3958	100%	3782	100%	-149	-3.8%

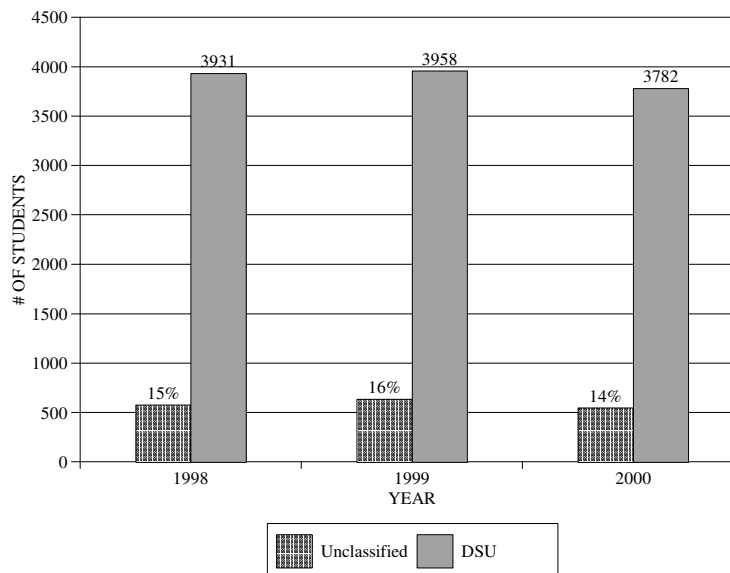


Source: IHL Statistical Report
Date : October 2000

* Classification estimated

DELTA STATE UNIVERSITY 3-YEAR ENROLLMENT PROFILE UNCLASSIFIED MAJOR

FALL SEMESTER	1998		1999		2000		3-YR CHANGE	
	#	%	#	%	#	%	#	%
STATUS								
Full-time	207	36%	273	43%	244	45%	37	18%
Part-time	370	64%	362	57%	302	55%	-68	-18%
GENDER								
Female	320	55%	339	53%	317	58%	-3	-1%
Male	257	45%	296	47%	229	42%	-28	-11%
RESIDENCY								
In-State	544	94%	598	94%	507	93%	-37	-7%
Out-of-State	33	6%	37	6%	39	7%	6	18%
CLASSIFICATION								
Freshmen*	322	56%	329	52%	295	54%	-27	-8%
Sophomores*	57	10%	76	12%	80	15%	23	40%
Juniors*	59	10%	70	11%	48	9%	-11	-19%
Seniors*	82	14%	75	12%	73	13%	-9	-11%
Graduates	57	10%	85	13%	50	9%	-7	-12%
School Total	577	15%	635	16%	546	14%	-31	-5%
DSU TOTAL	3931	100%	3958	100%	3782	100%	-149	-3.8%



Source: IHL Statistical Report
Date : October 2000

* Classification estimated

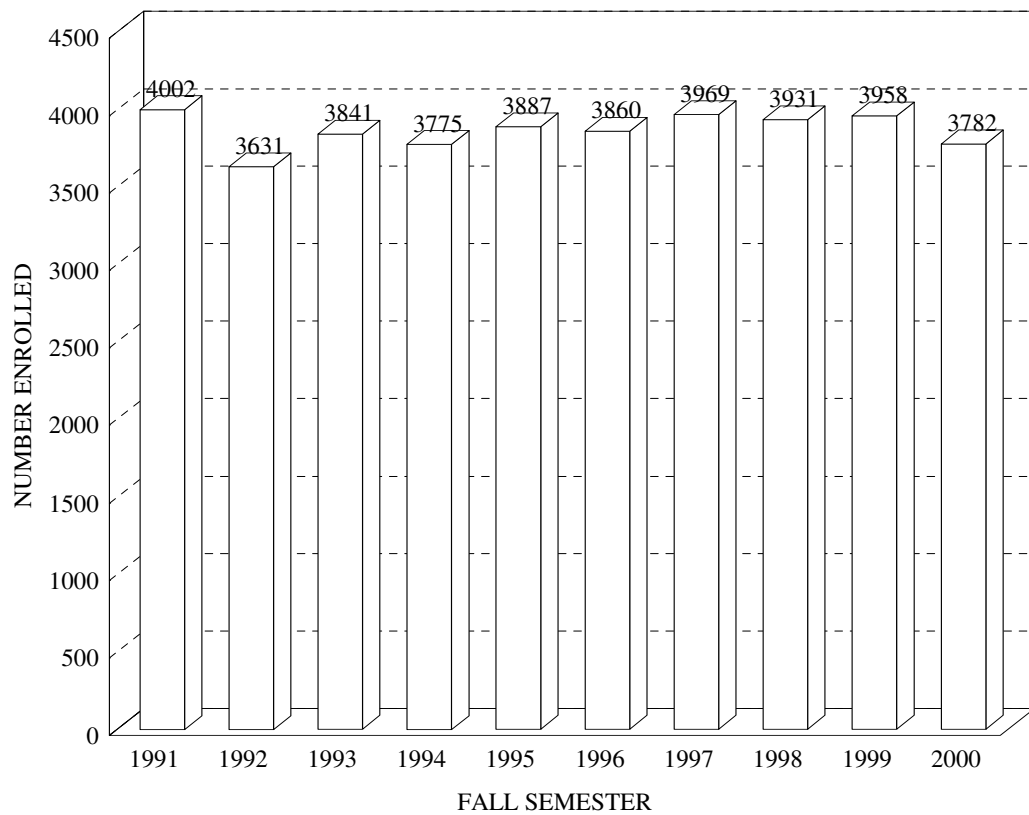
**DELTA STATE UNIVERSITY
ENROLLMENT PROFILE
5-YEAR TREND**

Fall Semester	1996		1997		1998		1999		2000	
	#	%	#	%	#	%	#	%	#	%
TOTAL UNIVERSITY	3860	100%	3969	100%	3931	100%	3958	100%	3782	100%
Full-time	3040	79%	3056	77%	2967	75%	3067	77%	2914	77%
Part-time	820	21%	913	23%	964	25%	891	23%	868	23%
FTE	3322		3372		3265		3357		3167	
Total Undergraduate	3305	86%	3422	86%	3440	88%	3430	87%	3283	87%
Total Graduate	555	14%	547	14%	491	12%	528	13%	499	13%
Freshmen*	840	21.8%	864	21.8%	895	22.8%	937	23.7%	899	23.8%
Sophomores*	557	14.4%	573	14.4%	570	14.5%	554	14.0%	530	14.0%
Juniors*	795	20.6%	856	21.6%	843	21.4%	831	21.0%	794	21.0%
Seniors*	1113	28.8%	1129	28.4%	1132	28.8%	1108	28.0%	1060	28.0%
Masters	522	13.5%	512	12.9%	457	11.6%	484	12.2%	428	11.3%
Specialists	8	0.2%	7	0.2%	7	0.2%	21	0.5%	37	1.0%
Doctoral	25	0.6%	28	0.7%	27	0.7%	23	0.6%	34	0.9%
First-time Freshmen	450	11.7%	504	12.7%	433	11.0%	465	11.7%	471	12.5%
Returning Student	2229	57.7%	2051	51.7%	2236	56.9%	2062	52.1%	1867	49.4%
Readmitted Student	66	1.7%	81	2.0%	60	1.5%	62	1.6%	169	4.5%
Transfer Student	477	12.4%	573	14.4%	483	12.3%	616	15.6%	588	15.5%
Returning Grad. Student	338	8.8%	421	10.6%	445	11.3%	418	10.6%	431	11.4%
High School Student	41	1.1%	39	1.0%	46	1.2%	37	0.9%	26	0.7%
Transient	1	0.0%	1	0.0%	1	0.0%	0	0.0%	0	0.0%
Non-Formula Student**	38	1.0%	57	1.4%	41	1.0%	45	1.1%	31	0.8%
First-time Grad. Student	220	5.7%	242	6.1%	186	4.7%	253	6.4%	199	5.3%
Other	0	0.0%	0	0.0%	0	0.0%	0	0.0%	0	0.0%
In-State	3639	94%	3736	94%	3649	93%	3681	93%	3488	92%
Out-of-State	221	6%	233	6%	282	7%	277	7%	294	8%
Men	1526	40%	1535	39%	1540	39%	1574	40%	1483	39%
Women	2334	60%	3434	87%	2391	61%	2384	60%	2299	61%
Caucasian	2745	71.1%	2789	70.3%	2788	70.9%	2784	70.3%	2610	69.0%
Asian	29	0.8%	33	0.8%	33	0.8%	33	0.8%	22	0.6%
Black	1067	27.6%	1126	28.4%	1081	27.5%	1118	28.2%	1133	30.0%
American Indian	4	0.1%	8	0.2%	14	0.4%	11	0.3%	8	0.2%
Hispanic	15	0.4%	13	0.3%	15	0.4%	12	0.3%	9	0.2%

Source: IHL Statistical Report
Date : October 2000

* Classification estimated
** "Over 21"

**DELTA STATE UNIVERSITY
ON-CAMPUS HEADCOUNT ENROLLMENT
FALL 1991-2000**



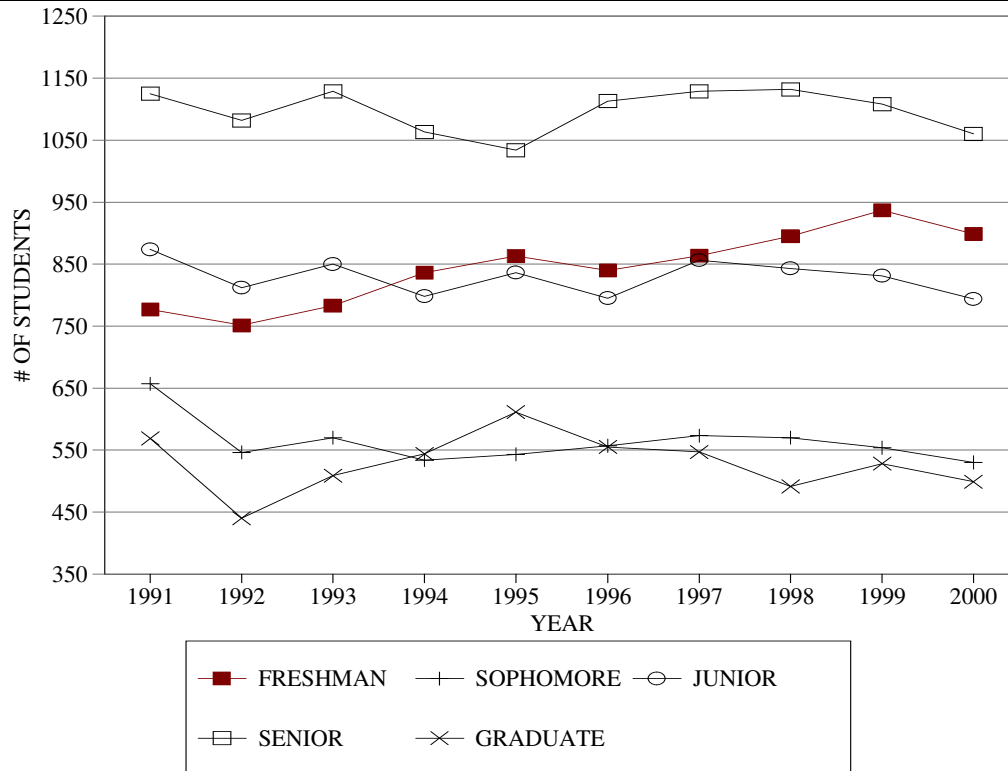
Source: IHL Statistical Report
Date : October 2000

DELTA STATE UNIVERSITY

ON-CAMPUS ENROLLMENT OF STUDENTS BY CLASS

10-YEAR TREND

FALL SEMESTER	FRESHMAN*		SOPHOMORE*		JUNIOR*		SENIOR*		GRADUATE		TOTAL	
	#	%	#	%	#	%	#	%	#	%	#	%
1991	777	19%	657	16%	874	22%	1125	28%	569	14%	4002	100%
1992	751	21%	546	15%	812	22%	1082	30%	440	12%	3631	100%
1993	783	20%	570	15%	850	22%	1129	29%	509	13%	3841	100%
1994	836	21%	534	14%	798	21%	1063	28%	544	14%	3775	100%
1995	863	22%	543	14%	836	22%	1034	27%	611	16%	3887	100%
1996	840	21%	557	14%	795	21%	1113	29%	555	14%	3860	100%
1997	864	23%	573	14%	856	22%	1129	28%	547	14%	3969	100%
1998	895	24%	570	15%	843	21%	1132	29%	491	12%	3931	100%
1999	937	25%	554	14%	831	21%	1108	28%	528	13%	3958	100%
2000	899	24%	530	14%	794	21%	1060	28%	499	13%	3782	100%
10-YEAR CHG.	160	21%	-103	-16%	-43	-5%	-17	-2%	-41	-7%	-220	-5%

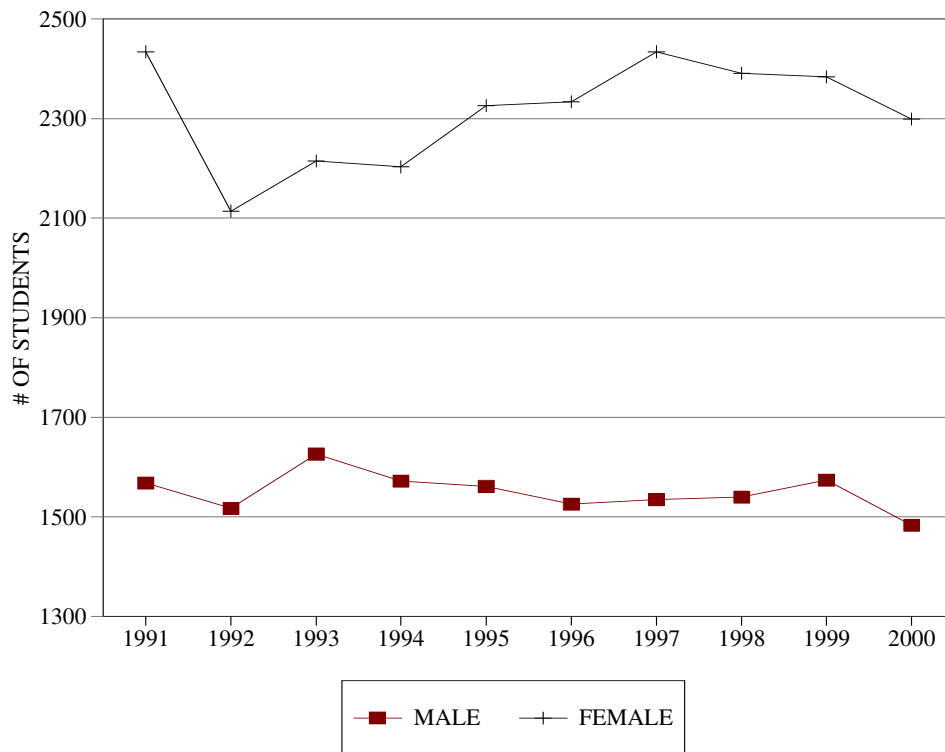


Source: IHL Statistical Report
Date : October 2000

* Classification estimated for years 1994-2000

DELTA STATE UNIVERSITY ON-CAMPUS ENROLLMENT OF STUDENTS BY GENDER 10-YEAR TREND

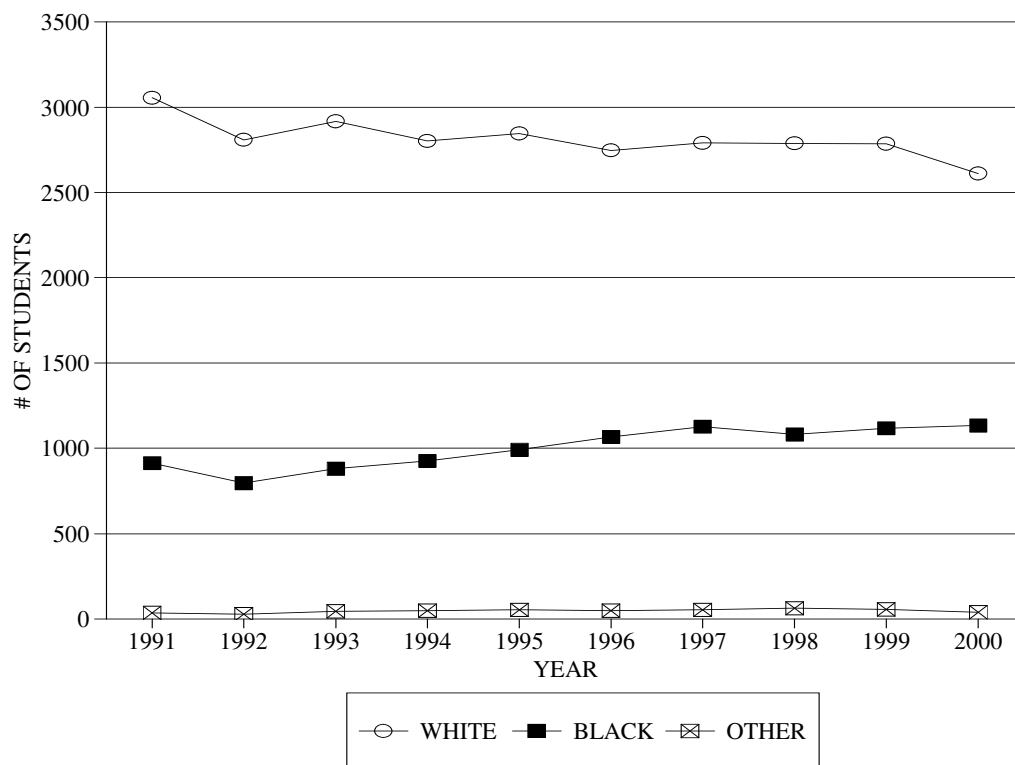
FALL SEMESTER	MALE		FEMALE		TOTAL	
	#	%	#	%	#	%
1991	1568	39%	2434	61%	4002	100%
1992	1517	42%	2114	58%	3631	100%
1993	1626	42%	2215	58%	3841	100%
1994	1572	42%	2203	58%	3775	100%
1995	1561	40%	2326	60%	3887	100%
1996	1526	40%	2334	60%	3860	100%
1997	1535	39%	2434	61%	3969	100%
1998	1540	39%	2391	61%	3931	100%
1999	1574	40%	2384	60%	3958	100%
2000	1483	39%	2299	61%	3782	100%
10-YEAR CHANGE	-85	-5%	-135	-6%	-220	-5%



Source: IHL Statistical Report
Date : October 2000

DELTA STATE UNIVERSITY
ON-CAMPUS ENROLLMENT OF STUDENTS BY RACE
10-YEAR TREND

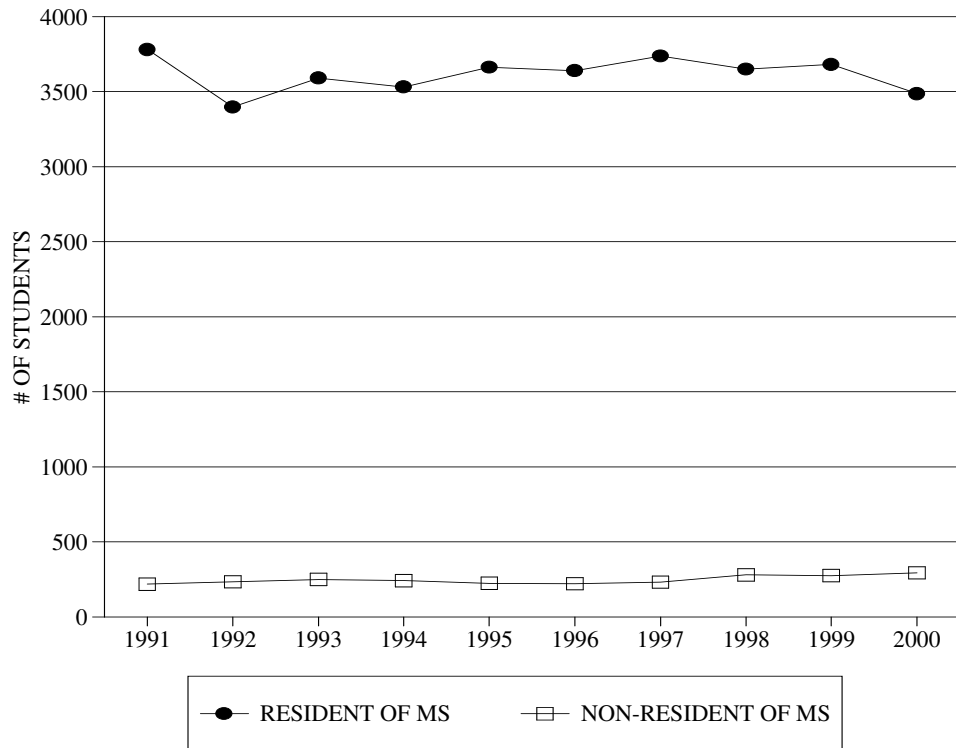
FALL SEMESTER	WHITE		BLACK		OTHER		TOTAL	
	#	%	#	%	#	%	#	%
1991	3054	76%	914	23%	34	1%	4002	100%
1992	2808	77%	795	22%	28	1%	3631	100%
1993	2917	76%	881	23%	43	1%	3841	100%
1994	2801	74%	926	25%	48	1%	3775	100%
1995	2845	73%	990	25%	52	1%	3887	100%
1996	2745	71%	1067	28%	48	1%	3860	100%
1997	2789	70%	1126	28%	54	1%	3969	100%
1998	2788	71%	1081	27%	62	2%	3931	100%
1999	2784	70%	1118	28%	56	1%	3958	100%
2000	2610	69%	1133	30%	39	1%	3782	100%
10-YEAR CHANGE	-444	-15%	219	24%	5	15%	-220	-5%



Source: IHL Statistical Report
Date : October 2000

DELTA STATE UNIVERSITY
ON-CAMPUS ENROLLMENT OF STUDENTS BY RESIDENCY
10-YEAR TREND

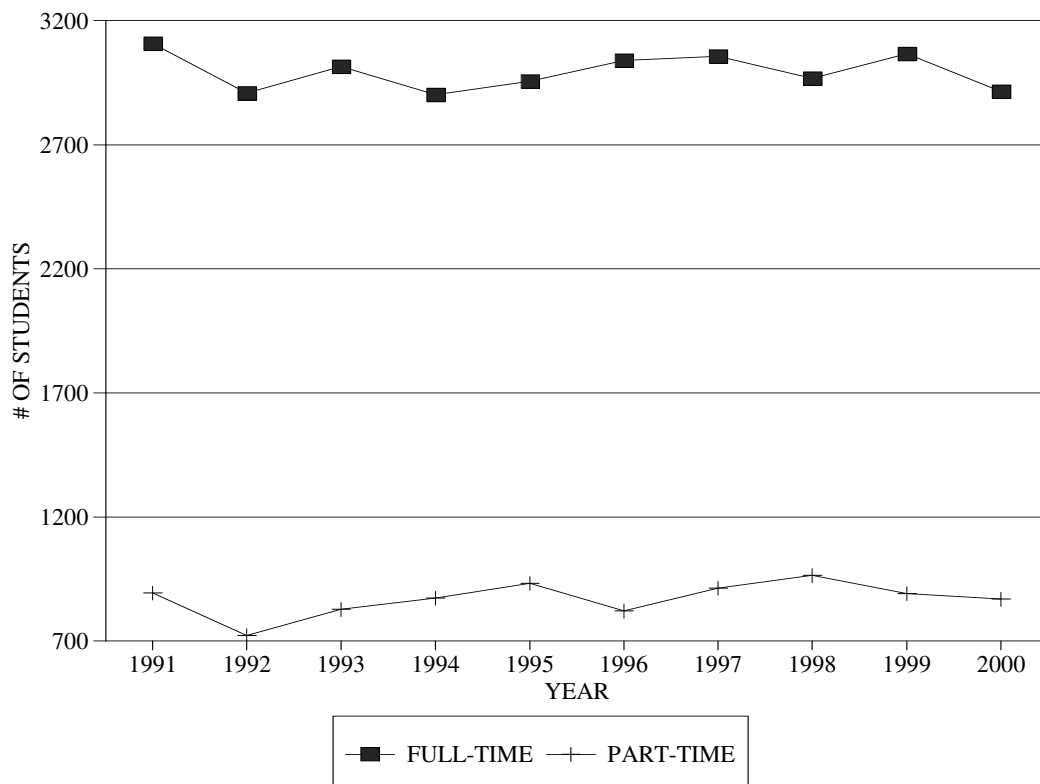
FALL SEMESTER	IN-STATE		OUT-OF-STATE		TOTAL	
	#	%	#	%	#	%
1991	3782	95%	220	5%	4002	100%
1992	3397	94%	234	6%	3631	100%
1993	3591	93%	250	7%	3841	100%
1994	3532	94%	243	6%	3775	100%
1995	3663	94%	224	6%	3887	100%
1996	3639	94%	221	6%	3860	100%
1997	3736	94%	233	6%	3969	100%
1998	3649	93%	282	7%	3931	100%
1999	3681	93%	277	7%	3958	100%
2000	3488	92%	294	8%	3782	100%
10-YEAR CHANGE	-294	-8%	74	34%	-220	-5%



Source: IHL Statistical Report
Date : October 2000

DELTA STATE UNIVERSITY ON-CAMPUS ENROLLMENT OF STUDENTS BY STATUS 10-YEAR TREND

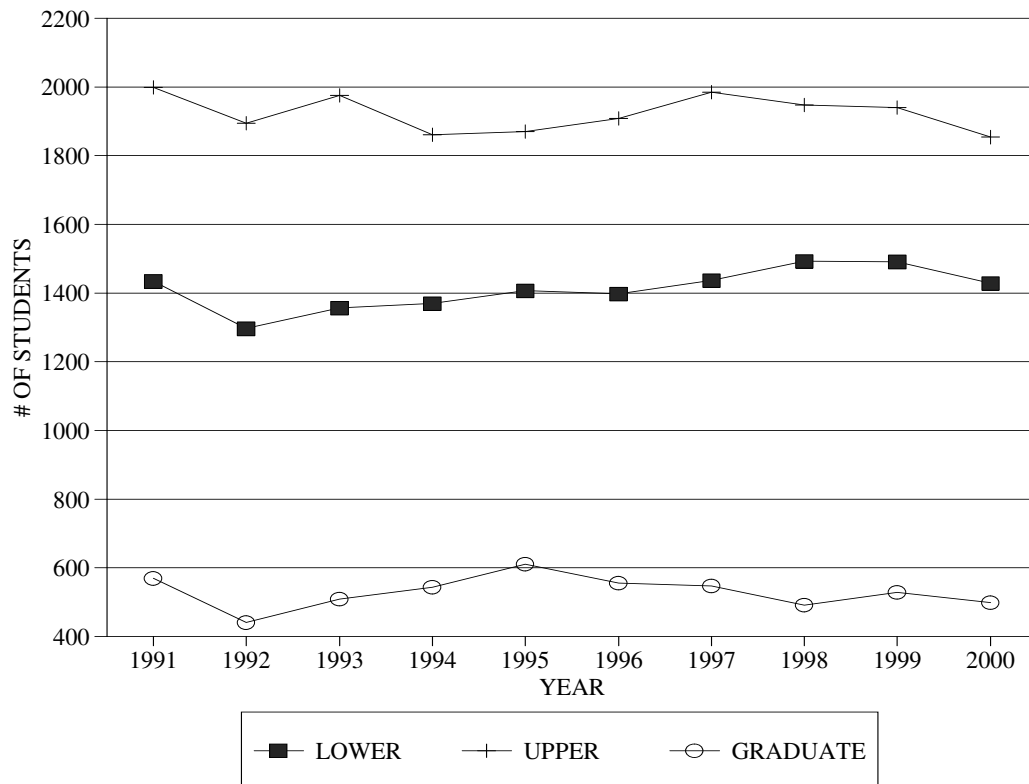
FALL SEMESTER	FULL-TIME		PART-TIME		TOTAL	
	#	%	#	%	#	%
1991	3108	78%	894	22%	4002	100%
1992	2908	80%	723	20%	3631	100%
1993	3014	78%	827	22%	3841	100%
1994	2902	77%	873	23%	3775	100%
1995	2955	76%	932	24%	3887	100%
1996	3040	79%	820	21%	3860	100%
1997	3056	77%	913	23%	3969	100%
1998	2967	75%	964	25%	3931	100%
1999	3067	77%	891	23%	3958	100%
2000	2914	77%	868	23%	3782	100%
10-YEAR CHANGE	-194	-6%	-26	-3%	-220	-5%



Source: IHL Statistical Report
Date : October 2000

DELTA STATE UNIVERSITY ON-CAMPUS ENROLLMENT OF STUDENTS BY LEVEL 10-YEAR TREND

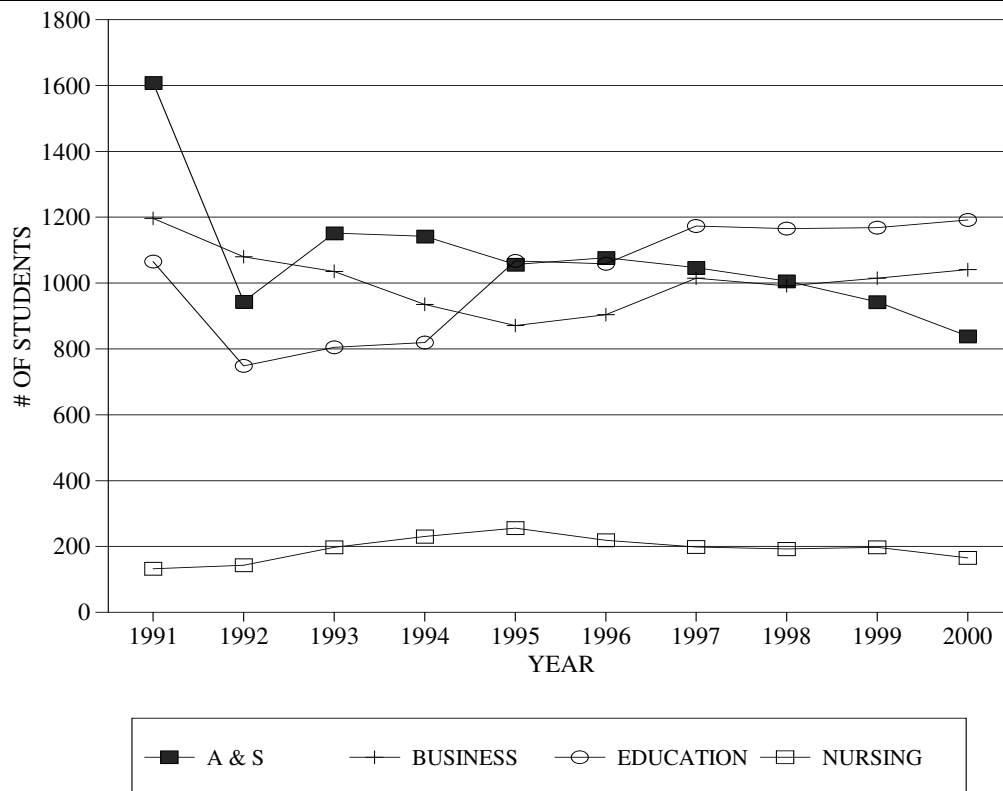
FALL SEMESTER	LOWER LEVEL		UPPER LEVEL		GRADUATE		TOTAL	
	#	%	#	%	#	%	#	%
1991	1434	36%	1999	50%	569	14%	4002	100%
1992	1297	36%	1894	52%	440	12%	3631	100%
1993	1357	35%	1975	51%	509	13%	3841	100%
1994	1370	36%	1861	49%	544	14%	3775	100%
1995	1406	36%	1870	48%	611	16%	3887	100%
1996	1397	36%	1908	49%	555	14%	3860	100%
1997	1437	36%	1985	50%	547	14%	3969	100%
1998	1492	38%	1948	50%	491	12%	3931	100%
1999	1491	38%	1939	49%	528	13%	3958	100%
2000	1429	38%	1854	49%	499	13%	3782	100%
10-YEAR CHANGE	-5	-0%	-145	-7%	-70	-12%	-220	-5%



Source: IHL Statistical Report
Date : October 2000

DELTA STATE UNIVERSITY ON-CAMPUS ENROLLMENT OF STUDENTS BY SCHOOL 10-YEAR TREND

FALL SEMESTER	A & S		BUSINESS		EDUCATION		NURSING		TOTAL	
	#	%	#	%	#	%	#	%	#	%
1991	1608	40%	1197	30%	1065	27%	132	3%	4002	100%
1992	944	32%	1080	37%	749	26%	143	5%	2916	100%
1993	1151	36%	1036	32%	805	25%	197	6%	3189	100%
1994	1142	37%	936	30%	819	26%	230	7%	3127	100%
1995	1056	33%	871	27%	1067	33%	255	8%	3249	100%
1996	1077	33%	904	28%	1059	32%	219	7%	3259	100%
1997	1046	30%	1015	30%	1174	34%	198	6%	3433	100%
1998	1006	30%	991	30%	1165	35%	192	6%	3354	100%
1999	943	28%	1015	31%	1169	35%	196	6%	3323	100%
2000	839	26%	1040	32%	1192	37%	165	5%	3236	100%
10-YEAR CHG.	-769	-48%	-157	-13%	127	12%	33	25%	-766	-19%



Source: IHL Statistical Report

Date : October 2000

DELTA STATE UNIVERSITY
ENROLLMENT: ACTUAL AND PROJECTED
1992-2004

CLASSIFICATION	Actual 1992	Actual 1993	Actual 1994	Actual 1995	Actual 1996	Actual 1997	Actual 1998	Actual 1999	Actual 2000	Projected 2001	----> 2002	2003	2004
Freshmen*	751	783	836	897	845	864	895	937	899	833	828	822	793
Sophomores*	546	570	534	546	538	573	570	554	530	562	520	517	514
Juniors*	812	850	798	782	808	856	843	831	794	788	835	773	769
Seniors*	1082	1129	1063	1051	1114	1129	1132	1108	1060	1069	1061	1125	1041
Total Undergraduates	3,191	3,332	3,231	3,276	3,305	3,422	3,440	3,430	3,283	3,252	3,244	3,237	3,117
Masters	405	460	489	573	522	512	457	484	428	437	446	455	464
Specialists	6	10	14	5	8	7	7	21	37	38	39	40	41
Doctors	29	39	41	33	25	28	27	23	34	35	36	37	38
Total Graduates	440	509	544	611	555	547	491	528	499	510	521	532	543
Headcount, on-campus	3,631	3,841	3,775	3,887	3,860	3,969	3,931	3,958	3,782	3,762	3,765	3,769	3,660
Extension, off-campus	125	65	142	120	155	116	117	128	134	138	142	146	150
Actual Headcount	3756	3906	3917	4007	4015	4085	4048	4086	3916				
Projected Headcount	4155	4076	3862	3885	3993	3954	4152	4158	4096	3900	3907	3915	3810

Source: Institutional Research and Planning
Date : March 2001

* Classification estimated

DELTA STATE UNIVERSITY
MEN'S & WOMEN'S RESIDENCE HALLS - COMPARATIVE ROOM RPT.
5-YEAR TREND

RESIDENCE HALLS	10/01/96	10/01/97	10/01/98	10/01/99	10/01/2000	Capacity
<i>MEN'S</i>						
Whittington-Williams	118	104	99	111	108	124
Bond-Carpenter	120	120	112	113	119	140
Stadium	60	71	55	58	49	78
Noel	64	54	60	50	43	76
Brewer	73	74	62	66	63	81
Clark	54	54	60	47	39	76
Longino	58	61	57	46	51	76
Woolfolk	45	35	45	41	34	68
Daugherty *	0	0	0	0	0	(74)
TOTALS	592	573	550	532	506	719
Classification Breakdown						
Freshmen	142	119	114	141	141	
Sophomores	115	123	112	93	101	
Juniors	163	151	165	143	124	
Seniors	141	150	127	127	117	
Graduates	31	30	32	28	23	
TOTALS	592	573	550	532	506	
<i>WOMEN'S</i>						
Brumby-Castle	186	188	181	187	176	196
Cleveland	80	78	76	71	81	89
Cain-Tatum	95	102	98	100	102	116
Fugler-Hammett	123	127	120	119	129	139
Lawler-Harkins	269	265	268	262	257	290
Ward	61	70	56	42	62	72
TOTALS	814	830	799	781	807	902
Classification Breakdown						
Freshmen	236	246	226	217	225	
Sophomores	204	178	208	189	174	
Juniors	204	216	184	239	235	
Seniors	147	167	162	123	159	
Graduates	23	23	19	13	14	
TOTALS	814	830	799	781	807	
<i>OVERALL TOTALS</i>						
Freshmen	378	365	340	358	366	
Sophomores	319	301	320	282	275	
Juniors	367	367	349	382	359	
Seniors	288	317	289	250	276	
Graduates	54	53	51	41	37	
TOTALS	1406	1403	1349	1313	1313	

Source: Housing & Residence Life
Date : October 2000

* Denotes dorm will not be used unless capacity is reached
() Indicates figures are not included in the overall total

DELTA STATE UNIVERSITY
ON-CAMPUS ENROLLMENT OF STUDENTS BY COUNTIES
5-YEAR TREND

COUNTIES	FALL 1996	FALL 1997	FALL 1998	FALL 1999	FALL 2000	5-YEAR CHANGE
Adams	20	18	18	11	14	-6
Alcorn	4	5	2	3	7	3
Amite	4	4	3	4	4	0
Attala	8	14	18	23	17	9
Benton	1	2	1	4	2	1
Bolivar	1090	1175	1165	1127	1060	-30
Calhoun	33	30	32	19	18	-15
Carroll	42	39	47	37	39	-3
Chickasaw	12	11	14	12	12	0
Choctaw	3	6	4	3	3	0
Claiborne	3	4	3	7	3	0
Clarke	3	4	1	3	2	-1
Clay	2	4	6	5	7	5
Coahoma	256	257	264	238	196	-60
Copiah	5	3	2	8	9	4
Covington	1	3	2	2	3	2
Desoto	124	125	110	116	109	-15
Forrest	6	6	7	7	5	-1
Franklin	3	1	2	2	0	-3
George	5	3	2	3	2	-3
Greene	1	1	1	2	2	1
Grenada	137	134	130	125	121	-16
Hancock	1	1	1	1	0	-1
Harrison	21	20	15	19	22	1
Hinds	61	56	60	57	63	2
Holmes	33	32	25	34	23	-10
Humphreys	42	51	55	58	61	19

Source: IHL Statistical Report

Date : October 2000

Page 1 of 3

DELTA STATE UNIVERSITY
ON-CAMPUS ENROLLMENT OF STUDENTS BY COUNTIES
5-YEAR TREND

COUNTIES	FALL 1996	FALL 1997	FALL 1998	FALL 1999	FALL 2000	5-YEAR CHANGE
Issaquena	12	10	10	3	4	-8
Itawamba	3	1	3	3	3	0
Jackson	29	29	25	26	23	-6
Jasper	1	3	5	5	3	2
Jefferson	1	0	0	2	1	0
Jefferson Davis	1	3	4	2	2	1
Jones	4	4	1	3	9	5
Kemper	0	0	0	0	0	0
Lafayette	16	21	16	11	7	-9
Lamar	1	1	1	2	7	6
Lauderdale	5	8	5	6	3	-2
Lawrence	5	0	1	1	1	-4
Leake	4	5	7	10	9	5
Lee	25	24	24	30	28	3
Leflore	165	154	127	137	135	-30
Lincoln	6	12	8	6	6	0
Lowndes	21	20	18	20	18	-3
Madison	37	42	48	44	39	2
Marion	3	5	6	6	3	0
Marshall	6	9	16	19	21	15
Monroe	16	17	23	18	19	3
Montgomery	21	27	28	24	24	3
Neshoba	11	8	10	11	11	0
Newton	5	5	7	7	7	2
Noxubee	0	1	2	2	4	4
Oktibbeha	7	10	10	7	7	0
Panola	50	51	54	57	59	9
Pearl River	5	5	6	6	7	2

Source: IHL Statistical Report

Date : October 2000

Page 2 of 3

DELTA STATE UNIVERSITY
ON-CAMPUS ENROLLMENT OF STUDENTS BY COUNTIES
5-YEAR TREND

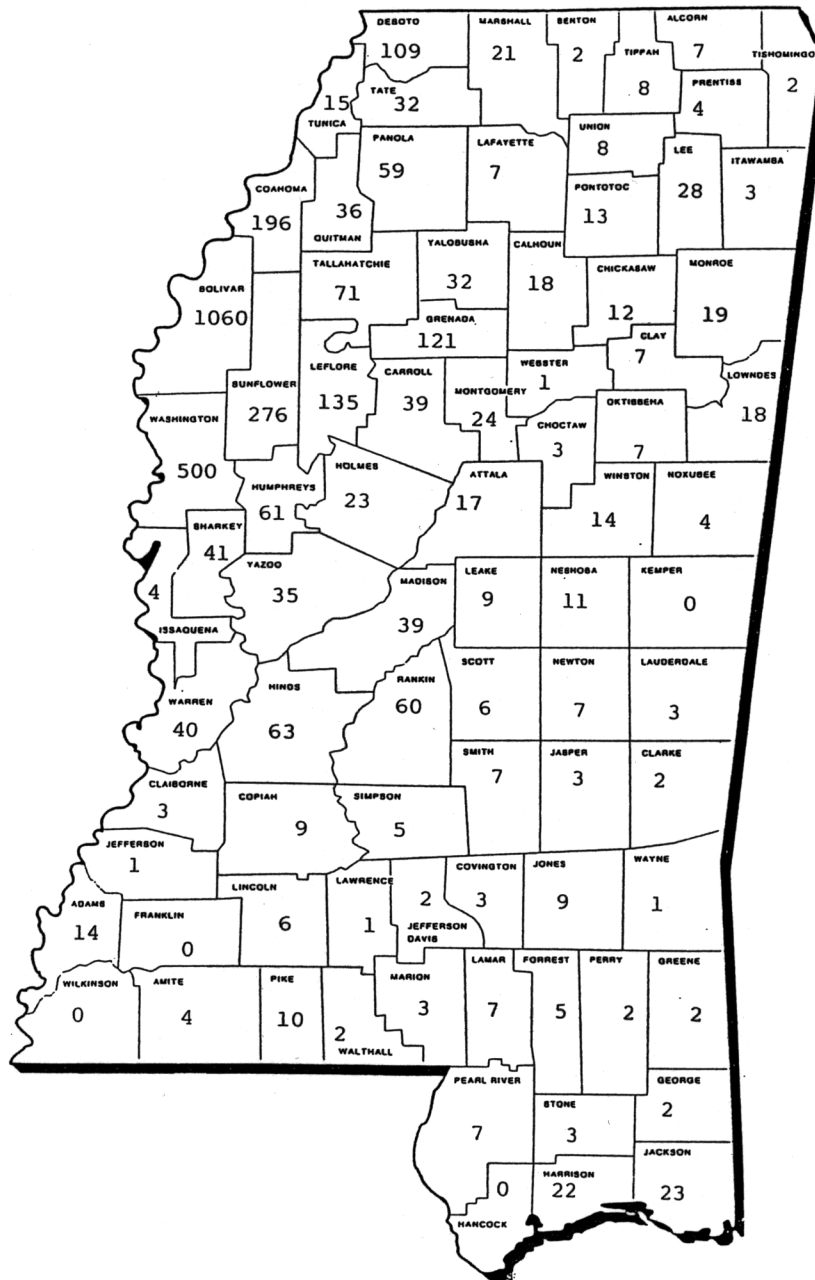
COUNTIES	FALL 1996	FALL 1997	FALL 1998	FALL 1999	FALL 2000	5-YEAR CHANGE
Perry	1	3	2	2	2	1
Pike	12	7	6	9	10	-2
Pontotoc	9	8	13	9	13	4
Prentiss	2	5	5	3	4	2
Quitman	51	51	34	36	36	-15
Rankin	63	61	59	65	60	-3
Scott	6	6	8	7	6	0
Sharkey	52	40	32	44	41	-11
Simpson	3	5	8	5	5	2
Smith	6	6	5	6	7	1
Stone	0	0	0	0	3	3
Sunflower	257	260	255	275	276	19
Tallahatchie	64	58	69	79	71	7
Tate	40	40	34	38	32	-8
Tippah	1	2	5	5	8	7
Tishomingo	3	3	5	2	2	-1
Tunica	16	17	20	21	15	-1
Union	6	5	7	9	8	2
Walthall	3	3	2	3	2	-1
Warren	26	34	25	44	40	14
Washington	557	559	522	536	500	-57
Wayne	3	2	2	2	1	-2
Webster	2	2	2	1	1	-1
Wilkinson	0	0	0	0	0	0
Winston	8	7	12	16	14	6
Yalobusha	28	20	28	30	32	4
Yazoo	39	48	34	36	35	-4
TOTALS	3639	3736	3649	3681	3488	-151

Source: IHL Statistical Report

Date : October 2000

Page 3 of 3

DELTA STATE UNIVERSITY ENROLLMENT OF STUDENTS BY COUNTIES FALL 2000



Source: IHL Statistical Report
Date : October 2000

DELTA STATE UNIVERSITY
ENROLLMENT OF STUDENTS BY STATES AND COUNTRIES
5-YEAR TREND

STATES AND COUNTRIES	FALL 1996	FALL 1997	FALL 1998	FALL 1999	FALL 2000	5-YEAR CHANGE
TOTAL - STATES	3836	3954	3901	3940	3751	-85
Alabama	9	14	19	19	10	1
Alaska	2	1	1	0	0	-2
Arizona	4	2	3	2	2	-2
Arkansas	28	35	43	38	40	12
California	1	2	1	3	2	1
Colorado	1	2	2	0	2	1
Connecticut	0	1	2	1	1	1
Delaware	0	0	0	0	0	0
District of Columbia	0	0	0	0	0	0
Florida	16	15	16	16	11	-5
Georgia	2	2	5	4	3	1
Hawaii	0	0	0	0	0	0
Idaho	0	0	0	0	0	0
Illinois	5	6	7	7	6	1
Indiana	3	2	1	2	4	1
Iowa	0	0	0	0	0	0
Kansas	1	0	0	1	0	-1
Kentucky	0	1	1	2	3	3
Louisiana	34	33	39	39	40	6
Maine	0	0	0	1	1	1
Maryland	1	3	4	2	4	3
Massachusetts	3	2	0	0	0	-3
Michigan	2	4	2	2	1	-1
Minnesota	3	1	1	0	0	-3
Mississippi	3639	3736	3649	3681	3488	-151
Missouri	7	7	2	3	1	-6
Montana	0	0	0	0	0	0
Nebraska	0	0	1	0	0	0
Nevada	1	1	0	0	0	-1
New Hampshire	0	0	0	0	0	0
New Jersey	1	2	2	1	1	0
New Mexico	0	1	0	0	0	0

Source: IHL Statistical Report

Date : October 2000

Page 1 of 2

DELTA STATE UNIVERSITY
ENROLLMENT OF STUDENTS BY STATES AND COUNTRIES
5-YEAR TREND

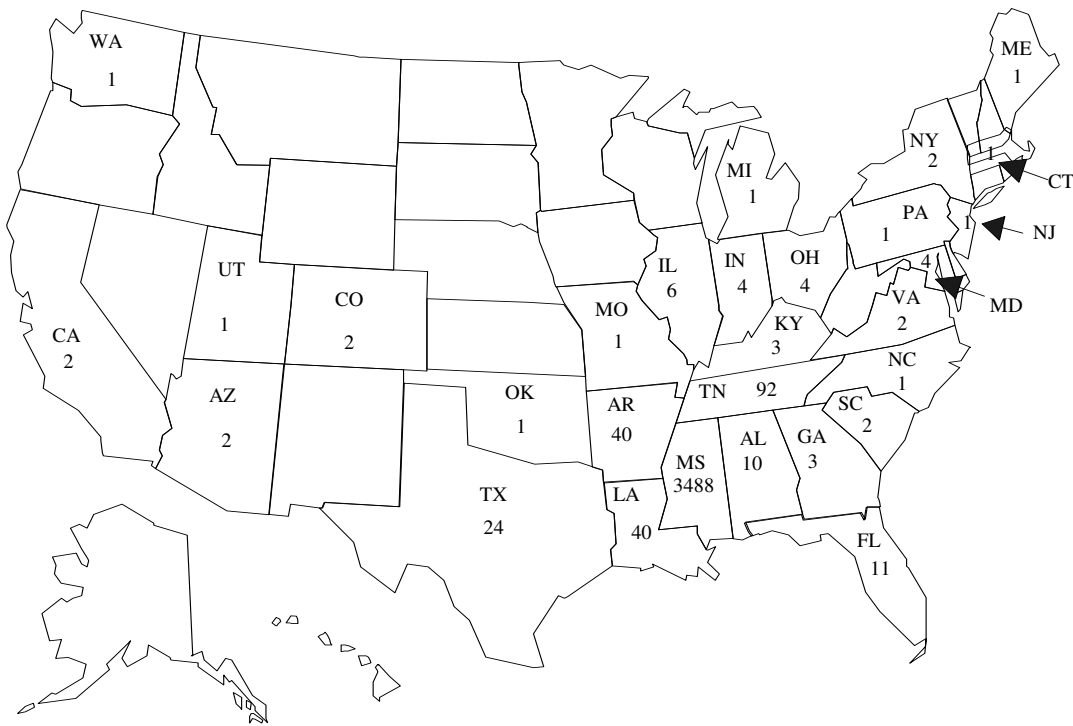
STATES AND COUNTRIES	FALL 1996	FALL 1996	FALL 1998	FALL 1999	FALL 2000	5-YEAR CHANGE
STATES (CONT.)						
New York	0	1	0	3	2	2
North Carolina	1	1	0	1	1	0
North Dakota	0	0	0	0	0	0
Ohio	2	0	2	3	4	2
Oklahoma	0	1	2	3	1	1
Oregon	0	0	0	2	0	0
Pennsylvania	0	0	0	1	1	1
Rhode Island	0	0	0	0	0	0
South Carolina	0	1	2	1	2	2
South Dakota	1	0	0	0	0	-1
Tennessee	55	61	73	72	92	37
Texas	14	16	18	26	24	10
Utah	0	0	0	0	1	1
Vermont	0	0	0	0	0	0
Virginia	0	0	2	2	2	2
Washington	0	0	1	2	1	1
West Virginia	0	0	0	0	0	0
Wisconsin	0	0	0	0	0	0
Wyoming	0	0	0	0	0	0
TOTAL - COUNTRIES	23	15	30	18	31	8
Canada	4	5	4	1	1	-3
China	0	0	0	0	0	0
Czechoslovakia	1	1	0	0	0	-1
France	0	0	0	0	0	0
Germany	1	0	0	0	0	-1
Ghana	0	0	1	0	0	0
India	0	0	0	0	0	0
Malaysia	0	1	1	1	0	0
Nigeria	0	1	1	1	0	0
Poland	0	0	1	1	1	1
Slovakia	0	0	1	1	1	1
South Africa	2	1	0	0	1	-1
Spain	0	0	0	0	0	0
Turkey	0	0	0	1	1	1
United Kingdom	1	0	0	0	0	-1
Uzbekistan	0	0	0	1	1	1
Undefined	14	6	21	11	25	11
GRAND TOTAL	3859	3969	3931	3958	3782	-77

Source: IHL Statistical Report

Date : October 2000

Page 2 of 2

**DELTA STATE UNIVERSITY
ENROLLMENT OF STUDENTS BY STATES
FALL 2000**



Source: IHL Statistical Report
Date : October 2000

DELTA STATE UNIVERSITY
UNDERGRADUATE MAJORS BY GENDER AND MINORITY STATUS
FALL 2000

Undergraduate Majors	Male		Female		Total #	Minorities	
	#	%	#	%		#	%
Undeclared (Undergraduate)	221	41.5%	312	58.5%	533	83	15.6%
Art	61	37.7%	101	62.3%	162	30	18.5%
Athletic Training	0	0.0%	0	0.0%	0	0	0.0%
Audiology/Speech Pathology	1	2.6%	37	97.4%	38	17	44.7%
Biology	68	31.9%	145	68.1%	213	77	36.2%
Biology Education	7	26.9%	19	73.1%	26	10	38.5%
Medical Technology	0	0.0%	2	100.0%	2	1	50.0%
Environmental Science	11	78.6%	3	21.4%	14	1	7.1%
History	19	63.3%	11	36.7%	30	1	3.3%
English	13	34.2%	25	65.8%	38	11	28.9%
English Education	7	28.0%	18	72.0%	25	7	28.0%
Foreign Languages	0	0.0%	4	100.0%	4	0	0.0%
Spanish Education	0	0.0%	0	0.0%	1	0	0.0%
Mathematics	16	69.6%	7	30.4%	23	5	21.7%
Mathematics Education	14	53.8%	12	46.2%	26	12	46.2%
Music	6	46.2%	7	53.8%	13	1	7.7%
Music Education	32	48.5%	34	51.5%	66	5	7.6%
Chemistry	23	46.0%	27	54.0%	50	14	28.0%
Chemistry Education	0	0.0%	0	0.0%	0	0	0.0%
Political Science	5	33.3%	10	66.7%	15	6	40.0%
Criminal Justice	61	73.5%	22	26.5%	83	26	31.3%
Social Science	8	42.1%	11	57.9%	19	9	47.4%

Source: Institutional Research & Planning

Date : January 2001

Page 1 of 2

DELTA STATE UNIVERSITY
UNDERGRADUATE MAJORS BY GENDER AND MINORITY STATUS
FALL 2000

Undergraduate Majors	Male		Female		Total	Minorities	
	#	%	#	%	#	#	%
Social Science Education	29	56.9%	22	43.1%	51	18	35.3%
Social Work	9	10.5%	77	89.5%	86	56	65.1%
Accounting	37	27.8%	96	72.2%	133	35	26.3%
Office Administration	1	3.3%	29	96.7%	30	24	80.0%
Aviation Management	15	88.2%	2	11.8%	17	4	23.5%
Flight Operations	73	90.1%	8	9.9%	81	8	9.9%
Computer Information Systems	104	49.3%	107	50.7%	211	119	56.4%
Finance	22	64.7%	12	35.3%	34	13	38.2%
Hospitality Services Management	0	0.0%	0	0.0%	0	0	0.0%
Insurance & Real Estate	21	56.8%	16	43.2%	37	7	18.9%
General Business	130	65.3%	69	34.7%	199	36	18.1%
Management	80	57.6%	59	42.4%	139	37	26.6%
Marketing	44	51.2%	42	48.8%	86	11	12.8%
Business Education	4	25.0%	12	75.0%	16	8	50.0%
Psychology	25	29.8%	59	70.2%	84	28	33.3%
Special Education	7	11.7%	53	88.3%	60	25	41.7%
Elementary Education	9	2.6%	335	97.4%	344	129	37.5%
Health, Phys. Ed. & Recreation	133	71.1%	54	28.9%	187	53	28.3%
Fashion Merchandising	1	4.5%	16	72.7%	22	4	18.2%
Family & Consumer Science	1	1.9%	53	98.1%	54	23	42.6%
Nursing	17	12.5%	119	87.5%	136	43	31.6%
TOTALS	1335	39%	2047	60%	3388	997	29.4%

Source: Institutional Research & Planning

Date : January 2001

Page 2 of 2

DELTA STATE UNIVERSITY
GRADUATE MAJORS BY GENDER AND MINORITY STATUS
FALL 2000

Graduate Majors	Male		Female		Total #	Minorities	
	#	%	#	%		#	%
Non-Degree (Graduate)	10	16.7%	50	83.3%	60	36	60.0%
Nursing	3	9.4%	29	90.6%	32	11	34.4%
Natural Sciences	11	36.7%	19	63.3%	30	9	30.0%
Criminal Justice	9	60.0%	6	40.0%	15	7	46.7%
Community Development	6	40.0%	9	60.0%	15	11	73.3%
History Education	7	63.6%	4	36.4%	11	1	9.1%
English Education	1	25.0%	3	75.0%	4	1	25.0%
Mathematics Education	0	0.0%	0	0.0%	0	0	0.0%
Music Education	1	50.0%	1	50.0%	2	0	0.0%
Social Science Education	4	26.7%	11	73.3%	15	11	73.3%
Accounting	4	44.4%	5	55.6%	9	2	22.2%
Commercial Aviation	9	100.0%	0	0.0%	9	1	11.1%
Business Administration	55	57.3%	41	42.7%	96	32	33.3%
Counseling	5	8.2%	56	91.8%	61	31	50.8%
School Psychology	0	0.0%	0	0.0%	0	0	0.0%
Special Education	0	0.0%	21	100.0%	21	8	38.1%
Elementary Education *	0	0.0%	50	100.0%	50	24	48.0%
Administration & Supervision *	10	21.7%	36	78.3%	46	32	69.6%
Secondary Education	0	0.0%	0	0.0%	0	0	0.0%
Heath, Phys. Ed. & Recreation	18	72.0%	7	28.0%	25	6	24.0%
Professional Studies**	15	44.1%	19	55.9%	34	10	29.4%
TOTALS	168	31.4%	367	68.6%	535	233	43.6%

Source: Institutional Research & Planning
Date : January 2001

* Denotes Masters and Specialist Programs
** Denotes Doctoral Program

DELTA STATE UNIVERSITY
RETENTION OF FIRST-TIME ENTERING FRESHMEN BY ACT SCORE CATEGORY
FOR 1994-95 FRESHMAN CLASS

Year *	ACT 28-36 Fall Semester				ACT 22-27 Fall Semester				ACT 19-21 Fall Semester				ACT 16-18 Fall Semester			
	Enr.	Cumm. GPA	% of Orig.	Deg. Awd.	Enr.	Cumm. GPA	% of Orig.	Deg. Awd.	Enr.	Cumm. GPA	% of Orig.	Deg. Awd.	Enr.	Cumm. GPA	% of Orig.	Deg. Awd.
FY 94-95	21				107				155				164			
FY 95-96	17	3.52	81.0%		85	3.01	79.4%		102	2.58	65.8%		118	2.08	72.0%	
FY 96-97	16	3.57	76.2%	0	74	3.05	69.2%	2	84	2.63	54.2%	4	88	2.39	53.7%	0
FY 97-98	15	3.54	71.4%	11	66	3.11	61.7%	28	66	2.71	42.6%	19	85	2.49	51.8%	21
FY 98-99	4	3.45	19.0%	2	32	3.03	29.9%	27	39	2.72	25.2%	23	64	2.52	39.0%	31
FY 99-00	1	3.50	4.8%	0	13	2.95	12.1%	5	23	2.60	14.8%	9	26	2.54	15.9%	10
Total Degrees				13				62				55				62
Percentage				61.9%				57.9%				35.5%				37.8%

Year *	ACT 15 and Below Fall Semester				ACT Not Available Fall Semester				TOTAL Fall Semester			
	Enr.	Cumm. GPA	% of Orig.	Deg. Awd.	Enr.	Cumm. GPA	% of Orig.	Deg. Awd.	Enrolled	Cumm. GPA	% of Orig.	Degrees Awd.
FY 94-95	45				5				497			0
FY 95-96	23	2.11	51.1%		1	2.65	20.0%	0	346	2.53	69.6%	0
FY 96-97	22	2.21	48.9%	0	1	2.97	20.0%	0	285	2.69	57.3%	6
FY 97-98	19	2.29	42.2%	6	0	0.00	0.0%	1	251	2.76	50.5%	86
FY 98-99	12	2.20	26.7%	4	0	0.00	0.0%	0	151	2.68	30.4%	87
FY 99-00	6	2.29	13.3%	1	0	0.00	0.0%	0	69	2.63	13.9%	25
Total Degrees				11				1				204
Percentage				24.4%				20.0%				41.0%

Source: Office of Research & Planning, IHL
Date : August 2000

* FY 2000-01 data unavailable as of publication date

DELTA STATE UNIVERSITY
RETENTION OF FIRST-TIME ENTERING FRESHMEN
(ALL FIRST-TIME FRESHMEN)
FALL 1994 - 2000

YEAR ENTERED	1994		1995		1996		1997		1998		1999		2000	
Retention & Graduation Rates	#	%	#	%	#	%	#	%	#	%	#	%	#	%
All first-time entering freshmen	506	100%	485	100%	450	100%	504	100%	433	100%	465	100%	471	100%
Average ACT Score	19.7		19.5		19.5		19.8		20.1		19.7		19.7	
2nd Year - Returned	347	69%	364	75%	303	67%	375	74%	327	76%	314	68%		
3rd Year - Returned	287	57%	296	61%	258	57%	331	66%	242	56%				
Degrees thru 3 years	6	1%	10	2%	6	1%	15	3%	1					
4th Year - Returned	252	50%	268	55%	227	50%	269	53%						
Degrees thru 4 years	98	19%	104	21%	94	21%								
5th Year - Returned	152	30%	170	35%	140	31%								
Degrees thru 5 years	186	37%	200	41%										
6th Year - Returned	71	14%	82	17%										
Degrees thru 6 years	214	42%												
7th Year - Returned	47	9%												

Source: Office of Institutional Research & Planning
Date : January 2001

DELTA STATE UNIVERSITY
RETENTION OF FIRST-TIME ENTERING FRESHMEN
(WHITE FIRST-TIME FRESHMEN)
FALL 1994 - 2000

YEAR ENTERED	1994		1995		1996		1997		1998		1999		2000	
Retention & Graduation Rates	#	%	#	%	#	%	#	%	#	%	#	%	#	%
White first-time entering freshmen	404	100%	348	100%	307	100%	365	100%	301	100%	341	100%	331	100%
Average ACT Score	20.2		20.3		20.3		20.4		21.1		20.4		20.4	
2nd Year - Returned	277	69%	260	75%	207	67%	276	76%	231	77%	226	66%		
3rd Year - Returned	229	57%	207	59%	176	57%	238	65%	166	55%				
Degrees thru 3 years	6	1%	8	2%	6	2%	10	3%	0	0.0%				
4th Year - Returned	193	48%	190	55%	154	50%	205	56%						
Degrees thru 4 years	79	20%	78	22%	69	22%								
5th Year - Returned	112	28%	125	36%	85	28%								
Degrees thru 5 years	151	37%	151	58%										
6th Year - Returned	49	12%	56	16%										
Degrees thru 6 years	173	43%												
7th Year - Returned	29	7%												

Source: Office of Institutional Research & Planning
Date : January 2001

DELTA STATE UNIVERSITY
RETENTION OF FIRST-TIME ENTERING FRESHMEN
(BLACK FIRST-TIME FRESHMEN)
FALL 1994 - 2000

YEAR ENTERED	1994		1995		1996		1997		1998		1999		2000	
Retention & Graduation Rates	#	%	#	%	#	%	#	%	#	%	#	%	#	%
Black first-time entering freshmen	90	100%	132	100%	139	100%	131	100%	123	100%	123	100%	128	100%
Average ACT Score	17.5		17.5		17.8		18.0				17.8		18.0	
2nd Year - Returned	67	74%	101	77%	93	67%	93	71%	89	72%	87	71%		
3rd Year - Returned	56	62%	86	65%	79	57%	90	69%	71	58%				
Degrees thru 3 years	0	0%	2	2%	0	0%	4	3%	1					
4th Year - Returned	57	63%	75	57%	70	50%	62	47%						
Degrees thru 4 years	19	21%	26	20%	24	17%								
5th Year - Returned	38	42%	42	32%	53	38%								
Degrees thru 5 years	34	38%	48	36%										
6th Year - Returned	20	22%	24	18%										
Degrees thru 6 years	40	44%												
7th Year - Returned	17	19%												

Source: Office of Institutional Research & Planning
Date : January 2001

DELTA STATE UNIVERSITY
STUDENT CREDIT HOURS SUMMARY BY SEMESTER
2000-01

SEMESTER	Summer 2000		Fall 2000		Spring 2001		TOTAL	
	#	%	#	%	#	%	#	%
UNIVERSITY TOTAL	10,325	100.0%	45,608	100.0%	41,710	100.0%	97,643	100.0%
ARTS & SCIENCES	3,863	37.4%	22,214	48.7%	19,783	47.4%	45,860	47.0%
Aerospace Studies	0	0.0%	34	0.2%	35	0.2%	69	0.2%
Art	279	7.2%	2,340	10.5%	2,044	10.3%	4,663	10.2%
Audiology/Speech Path.	0	0.0%	381	1.7%	345	1.7%	726	1.6%
Biological Sciences	561	14.5%	2,675	12.0%	2,357	11.9%	5,593	12.2%
History	294	7.6%	1,860	8.4%	1,419	7.2%	3,573	7.8%
Languages, Lit. & Phil.	1,154	29.9%	5,610	25.3%	4,782	24.2%	11,546	25.2%
Mathematics	306	7.9%	2,474	11.1%	1,944	9.8%	4,724	10.3%
Military Science*	6	0.2%	0	0.00%	11	0.06%	17	0.04%
Music	87	2.3%	1,278	5.8%	1,032	5.2%	2,397	5.2%
Physical Sciences	318	8.2%	1,846	8.3%	1,804	9.1%	3,968	8.7%
Social Sciences	810	21.0%	3,017	13.6%	3,230	16.3%	7,057	15.4%
Social Work	48	1.2%	699	3.1%	780	3.9%	1,527	3.3%
BUSINESS	2,494	24.2%	11,039	24.2%	10,726	25.7%	24,259	24.8%
Accounting & CIS**	639	25.6%	3,642	33.0%	3,489	32.5%	7,770	32.0%
Commercial Aviation	240	9.6%	1,108	10.0%	973	9.1%	2,321	9.6%
Economics & Finance	451	18.1%	3,054	27.7%	3,084	28.8%	6,589	27.2%
Mgt., Mkt., OAD, & BED***	708	28.4%	2,818	25.5%	2,841	26.5%	6,367	26.2%
Executive BBA	168	6.7%	174	1.6%	132	1.2%	474	2.0%
Executive MBA	288	11.5%	243	2.2%	207	1.9%	738	3.0%
EDUCATION	3,736	36.2%	11,229	24.6%	10,042	24.1%	25,007	25.6%
Behavioral Sciences	963	25.8%	1,748	15.6%	1,423	14.2%	4,134	16.5%
C & I, Leader., & Res.	1,683	45.0%	3,830	34.1%	3,464	34.5%	8,977	35.9%
H P E & R	769	20.6%	3,316	29.5%	2,905	28.9%	6,990	28.0%
Family & Consumer Sci.	48	1.3%	757	6.7%	771	7.7%	1,576	6.3%
Psychology	273	7.3%	1,578	14.1%	1,479	14.7%	3,330	13.3%
NURSING	232	2.2%	1,126	2.5%	1,159	2.8%	2,517	2.6%
Nursing	232	100.0%	1,126	100.0%	1,159	100.0%	2,517	100.0%

Source: Institutional Research and Planning
Date : July 2001

Note: Departments are reported as % of Colleges/School.
Colleges/School are reported as a % of the University Total
* Program discontinued in Summer 1995
** CIS combined with Accounting in Fall 1999
*** OAD combined with Mgt. and Mkt. in Fall 1999

DELTA STATE UNIVERSITY
STUDENT CREDIT HOURS SUMMARY BY LEVEL
FALL 2000

LEVEL	LOWER		UPPER		GRADUATE		TOTAL	
	#	%	#	%	#	%	#	%
UNIVERSITY TOTAL	21,719	47.6%	20,639	45.3%	3,250	7.1%	45,608	100%
ARTS & SCIENCES	14,531	65.4%	7,140	32.1%	543	2.4%	22,214	48.7%
Aerospace Studies	10	29.4%	24	70.6%	0	0.0%	34	0.2%
Art	1,392	59.5%	933	39.9%	15	0.6%	2,340	10.5%
Audiology/Speech Path.	48	12.6%	333	87.4%	0	0.0%	381	1.7%
Biological Sciences	1,484	55.5%	1,066	39.9%	125	4.7%	2,675	12.0%
History	1,551	83.4%	261	14.0%	48	2.6%	1,860	8.4%
Languages, Lit. & Phil.	4,468	79.6%	1,100	19.6%	42	0.7%	5,610	25.3%
Mathematics	2,168	87.6%	306	12.4%	0	0.0%	2,474	11.1%
Military Science*	0	0.0%	0	0.0%	0	0.0%	0	0.00%
Music	585	45.8%	683	53.4%	10	0.8%	1,278	5.8%
Physical Sciences	1,388	75.2%	419	22.7%	39	2.1%	1,846	8.3%
Social Sciences	1,290	42.8%	1,463	48.5%	264	8.8%	3,017	13.6%
Social Work	147	21.0%	552	79.0%	0	0.0%	699	3.1%
BUSINESS	4,416	40.0%	5,747	52.1%	876	7.9%	11,039	24.2%
Accounting and CIS**	1,821	50.0%	1,710	47.0%	111	3.0%	3,642	33.0%
Commercial Aviation	579	52.3%	463	41.8%	66	6.0%	1,108	10.0%
Economics & Finance	1,608	52.7%	1,242	40.7%	204	6.7%	3,054	27.7%
Mgt., Mkt., and OAD***	408	14.5%	2,158	76.6%	252	8.9%	2,818	25.5%
Executive BBA	0	0.0%	174	100.0%	0	0.0%	174	1.6%
Executive MBA	0	0.0%	0	0.0%	243	100.0%	243	2.2%
EDUCATION	2,772	24.7%	6,860	61.1%	1,597	14.2%	11,229	24.6%
Behavioral Sciences	93	5.3%	1,012	57.9%	643	36.8%	1,748	15.6%
C & I, Leader., & Res.	135	3.5%	2,873	75.0%	822	21.5%	3,830	34.1%
H P E & R	1,353	40.8%	1,831	55.2%	132	4.0%	3,316	29.5%
Family & Consumer Sci.	117	15.5%	640	84.5%	0	0.0%	757	6.7%
Psychology	1,074	68.1%	504	31.9%	0	0.0%	1,578	14.1%
NURSING	0	0.0%	892	79.2%	234	20.8%	1,126	2.5%
Nursing	0	0.0%	892	79.2%	234	20.8%	1,126	100.0%

Source: Institutional Research and Planning

Date : February 2001

* Discontinued in Summer 1995

** CIS combined with Accounting in Fall 1999

*** OAD combined with Mgt. & Mkt. in Fall 1999

DELTA STATE UNIVERSITY
STUDENT CREDIT HOURS SUMMARY BY DISCIPLINE
FALL 2000

LEVEL	LOWER		UPPER		GRADUATE		TOTAL	
	#	%	#	%	#	%	#	%
University Total	21719	47.6%	20639	45.3%	3250	7.1%	45608	100.0%
Arts & Sciences	14531	65.4%	7140	32.1%	543	2.4%	22214	48.7%
AMU	182	67.2%	86	31.7%	3	1.1%	271	1.2%
ANT	78	100.0%	0	0.0%	0	0.0%	78	28.8%
ART	1392	59.5%	933	39.9%	15	0.6%	2340	10.5%
ASP	10	29.4%	24	70.6%	0	0.0%	34	0.2%
AUP	48	12.6%	333	87.4%	0	0.0%	381	1.7%
BIO	1484	55.5%	1066	39.9%	125	4.7%	2675	12.0%
CHE	526	54.3%	406	41.9%	36	3.7%	968	4.4%
COD	0	0.0%	0	0.0%	135	100.0%	135	0.6%
COR	0	0.0%	48	100.0%	0	0.0%	48	0.2%
CRJ	0	0.0%	197	70.9%	81	29.1%	278	1.3%
ENG	2848	75.7%	875	23.3%	39	1.0%	3762	16.9%
FRE	87	85.3%	15	14.7%	0	0.0%	102	0.5%
GBK	0	0.0%	24	80.0%	6	20.0%	30	0.1%
GEO	297	56.9%	210	40.2%	15	2.9%	522	2.3%
GER	63	87.5%	9	12.5%	0	0.0%	72	0.3%
GST	293	100.0%	0	0.0%	0	0.0%	293	1.3%
HIS	1551	83.4%	261	14.0%	48	2.6%	1860	8.4%
HON	25	100.0%	0	0.0%	0	0.0%	25	0.1%
JOU	82	66.1%	42	33.9%	0	0.0%	124	0.6%
LEN	0	0.0%	192	100.0%	0	0.0%	192	0.9%
MAT	2168	87.6%	306	12.4%	0	0.0%	2474	11.1%
MSC	0	0.0%	0	0.0%	0	0.0%	0	0.0%
MUS	403	40.0%	597	59.3%	7	0.7%	1007	4.5%
PHI	114	48.7%	117	50.0%	3	1.3%	234	1.1%
PHY	862	98.2%	13	1.5%	3	0.3%	878	4.0%
PLS	0	0.0%	0	0.0%	0	0.0%	0	0.0%
PSC	261	56.9%	189	41.2%	9	2.0%	459	2.1%
SOC	654	56.0%	495	42.4%	18	1.5%	1167	5.3%
SPA	237	87.8%	33	12.2%	0	0.0%	270	1.2%
SPE	719	98.8%	9	1.2%	0	0.0%	728	3.3%
SSC	0	0.0%	57	100.0%	0	0.0%	57	0.3%
SWO	147	21.0%	552	79.0%	0	0.0%	699	3.1%
WLF	0	0.0%	51	100.0%	0	0.0%	51	0.2%

Source: IHL Statistical Report

Date : February 2001

Page 1 of 2

DELTA STATE UNIVERSITY
STUDENT CREDIT HOURS SUMMARY BY DISCIPLINE
FALL 2000

LEVEL	LOWER		UPPER		GRADUATE		TOTAL	
	#	%	#	%	#	%	#	%
BUSINESS	4416	40.0%	5747	52.1%	876	7.9%	11039	24.2%
ACC	495	39.6%	687	54.9%	69	5.5%	1251	11.3%
BED	0	0.0%	3	100.0%	0	0.0%	3	0.0%
CAV	579	0.0%	463	0.0%	66	0.0%	1108	10.0%
CIS	1326	55.5%	1023	42.8%	42	1.8%	2391	21.7%
EBBA	0	0.0%	174	7.3%	0	0.0%	174	1.6%
ECO	966	82.6%	159	13.6%	45	3.8%	1170	10.6%
FIN	0	0.0%	615	80.7%	147	19.3%	762	6.9%
GBA	642	96.0%	27	4.0%	0	0.0%	669	6.1%
IRR	0	0.0%	441	97.4%	12	2.6%	453	4.1%
EMBA	0	0.0%	0	0.0%	243	100.0%	243	2.2%
MGT	0	0.0%	1077	94.5%	63	5.5%	1140	10.3%
MKT	0	0.0%	859	85.1%	150	14.9%	1009	9.1%
OAD	408	61.3%	219	32.9%	39	5.9%	666	6.0%
EDUCATION	2772	24.7%	6860	61.1%	1597	14.2%	11229	24.6%
AED	0	0.0%	0	0.0%	252	100.0%	252	2.2%
CED	93	16.9%	0	0.0%	457	83.1%	550	4.9%
CEL	0	0.0%	1833	93.9%	120	6.1%	1953	17.4%
CML	0	0.0%	96	100.0%	0	0.0%	96	0.9%
CRD	135	50.6%	132	49.4%	0	0.0%	267	2.4%
CSD	0	0.0%	42	100.0%	0	0.0%	42	0.4%
CSP	0	0.0%	688	90.5%	72	9.5%	760	6.8%
CUR	0	0.0%	770	84.2%	144	15.8%	914	8.1%
EDL	0	0.0%	0	0.0%	90	100.0%	90	0.8%
ELR	0	0.0%	0	0.0%	192	100.0%	192	1.7%
EPY	0	0.0%	324	74.0%	114	26.0%	438	3.9%
FCS	117	15.5%	640	84.5%	0	0.0%	757	6.7%
HSE	296	58.3%	161	31.7%	51	10.0%	508	4.5%
PER	1057	37.6%	1670	59.5%	81	2.9%	2808	25.0%
PSY	1074	68.1%	504	31.9%	0	0.0%	1578	14.1%
SUP	0	0.0%	0	0.0%	24	0.0%	24	0.2%
NURSING	0	0.0%	892	79.2%	234	20.8%	1126	2.5%
NUR	0	0.0%	892	79.2%	234	20.8%	1126	100.0%

Source: IHL Statistical Report

Date : February 2001

Page 2 of 2

DELTA STATE UNIVERSITY
STUDENT CREDIT HOURS SUMMARY BY LEVEL
TWO-YEAR COMPARISON

LEVEL	Fall 1999				Fall 2000			
	Lower	Upper	Grad.	Total	Lower	Upper	Grad.	Total
UNIVERSITY TOTAL	21,496	20,634	3,194	45,324	21,719	20,639	3,250	45,608
ARTS & SCIENCES	14,732	7,559	752	23,043	14,531	7,140	543	22,214
Aerospace Studies	6	39	0	45	10	24	0	34
Art	1,326	876	15	2,217	1,392	933	15	2,340
Audiology/Speech Path.	21	327	0	348	48	333	0	381
Biological Sciences	1,725	838	186	2,749	1,484	1,066	125	2,675
History	1,686	237	108	2,031	1,551	261	48	1,860
Languages, Lit. & Phil.	4,429	1,045	28	5,502	4,468	1,100	42	5,610
Mathematics	1,827	408	3	2,238	2,168	306	0	2,474
Military Science*	0	8	0	8	0	0	0	0
Music	893	753	19	1,665	585	683	10	1,278
Physical Sciences	1,457	490	33	1,980	1,388	419	39	1,846
Social Sciences	1,266	1,782	360	3,408	1,290	1,463	264	3,017
Social Work	96	756	0	852	147	552	0	699
BUSINESS	4,095	5,738	752	10,585	4,416	5,747	876	11,039
Accounting & CIS	1,743	1,739	173	3,655	1,821	1,710	111	3,642
Commercial Aviation	492	476	51	1,019	579	463	66	1,108
CIS and OAD	-	-	-	0	-	-	-	-
Economics & Finance	1,476	1,087	45	2,608	1,608	1,242	204	3,054
Mgt., Mkt., OAD, & BED	384	2,337	336	3,057	408	2,158	252	2,818
Executive BBA	0	99	0	99	0	174	0	174
Executive MBA	0	0	147	147	0	0	243	243
EDUCATION	2,669	6,597	1,453	10,719	2,772	6,860	1,597	11,229
Behavioral Sciences	21	777	468	1,266	93	1,012	643	1,748
C & I, Leader., & Res.	0	2,988	817	3,805	135	2,873	822	3,830
H P E & R	1,295	1,660	162	3,117	1,353	1,831	132	3,316
Family & Consumer Sci.	264	626	0	890	117	640	0	757
Psychology	1,089	546	6	1,641	1,074	504	0	1,578
NURSING	0	740	237	977	0	892	234	1,126
Nursing	0	740	237	977	0	892	234	1,126

Source: IHL Statistical Report

* Discontinued in Summer 1995

Date : February 2001

DELTA STATE UNIVERSITY STUDENT CREDIT HOURS SUMMARY BY COLLEGE/SCHOOL & DEPARTMENT 5-YEAR TREND												
FALL SEMESTER	1996		1997		1998		1999		2000		5-Yr. Change	
	#	%	#	%	#	%	#	%	#	%	#	%
UNIVERSITY TOTAL	45107	100%	45645	100%	45857	100%	45324	100%	45608	100%	501	1%
ARTS & SCIENCES	24592	54.5%	24105	52.8%	23425	51.1%	23043	50.8%	22214	48.7%	-2378	-10%
Aerospace Studies	56	0.2%	38	0.2%	36	0.2%	45	0.2%	34	0.2%	-22	-39%
Art	2076	8.4%	1938	8.0%	2145	9.2%	2217	9.6%	2340	10.5%	264	13%
Audiology/Speech Path.	515	2.1%	504	2.1%	485	2.1%	348	1.5%	381	1.7%	-134	-26%
Biological Sciences	3035	12.3%	2882	12.0%	2599	11.1%	2749	11.9%	2675	12.0%	-360	-12%
History	2172	8.8%	1962	8.1%	1833	7.8%	2031	8.8%	1860	8.4%	-312	-14%
Languages, Lit. & Phil.	5973	24.3%	5853	24.3%	5674	24.2%	5502	23.9%	5610	25.3%	-363	-6%
Mathematics	2465	10.0%	2432	10.1%	2308	9.9%	2238	9.7%	2474	11.1%	9	0%
Military Science*	4	0.0%	4	0.0%	10	0.0%	8	0.0%	0	0.0%	-4	-100%
Music	1573	6.4%	1800	7.5%	1850	7.9%	1665	7.2%	1278	5.8%	-295	-19%
Physical Sciences	2319	9.4%	2092	8.7%	2171	9.3%	1980	8.6%	1846	8.3%	-473	-20%
Social Sciences	3435	14.0%	3673	15.2%	3429	14.6%	3408	14.8%	3017	13.6%	-418	-12%
Social Work	969	3.9%	927	3.8%	885	3.8%	852	3.7%	699	3.1%	-270	-28%
BUSINESS	9315	20.7%	10070	22.1%	10726	23.4%	10585	23.4%	11039	24.2%	1724	19%
Accounting & CIS**	1263	13.6%	1287	12.8%	1353	12.6%	3655	34.5%	3642	33.0%	2379	188%
Commercial Aviation	812	8.7%	849	8.4%	883	8.2%	1019	9.6%	1108	10.0%	296	36%
CIS and OAD	2961	31.8%	3130	31.1%	3541	33.0%	-	0.0%	-	0.0%	-2961	-100%
Economics & Finance	2526	27.1%	2709	26.9%	2552	23.8%	2608	24.6%	3054	27.7%	528	21%
Mgt., Mkt., OAD, & BED***	1637	17.6%	1968	19.5%	2145	20.0%	3057	28.9%	2818	25.5%	1181	72%
Executive BBA	-	0.0%	-	0.0%	129	1.2%	99	0.9%	174	1.6%	174	0%
Executive MBA	116	1.2%	127	1.3%	123	1.1%	147	1.4%	243	2.2%	127	0%
EDUCATION	10173	22.6%	10332	22.6%	10522	22.9%	10719	23.6%	11229	24.6%	1056	10%
Behavioral Sciences	1746	17.2%	1783	17.3%	1599	15.2%	1266	11.8%	1748	15.6%	2	0%
C & I, Leader., & Res.	2997	29.5%	2952	28.6%	3425	32.6%	3805	35.5%	3830	34.1%	833	28%
H P E & R	2756	27.1%	2912	28.2%	3081	29.3%	3117	29.1%	3316	29.5%	560	20%
Family & Consumer Sci.	796	7.8%	852	8.2%	698	6.6%	890	8.3%	757	6.7%	-39	-5%
Psychology	1878	18.5%	1833	17.7%	1719	16.3%	1641	15.3%	1578	14.1%	-300	0%
NURSING	1027	2.3%	1138	2.5%	1184	2.6%	977	2.2%	1126	2.5%	99	10%
Nursing	1027	100.0%	1138	100.0%	1184	100.0%	977	100.0%	1126	100.0%	99	10%
Source: IHL Statistical Report Date : February 2001 Note: Departments are reported as % of Colleges/School. Colleges/School are reported as % of the University Total. * Program discontinued in Summer 1995 ** CIS combined with Accounting in Fall 1999 *** OAD & BED combined Mgt. & Mkt. in Fall 1999												

DELTA STATE UNIVERSITY
AVERAGE OF GRADES AWARDED BY DISCIPLINE *
FALL 2000

DISCIPLINE	COLLEGE/SCHOOL	# ENROLLED IN COURSES	AVERAGE G.P.A.
	UNIVERSITY AVERAGE	12,001	2.91
	ARTS & SCIENCES	6,295	2.55
AMU	Applied Music	10	3.30
ANT	Anthropology	24	2.38
ART	Art	757	3.01
ASP	Aerospace Studies	8	3.88
AUP	Audiology & Speech Pathology	127	3.24
BIO	Biology	657	2.56
CHE	Chemistry	202	2.49
COR	Corrections	15	2.93
CRJ	Criminal Justice	57	3.33
ENG	English	1,163	2.38
FRE	French	34	3.38
GEO	Geography	166	2.96
GER	German	23	3.00
HIS	History	612	1.89
JOU	Journalism	33	2.94
LEN	Law Enforcement	64	3.09
MAT	Mathematics	689	2.05
MUS	Music	156	2.97
PHI	Philosophy	75	2.44
PHY	Physical Science	277	2.89
PLS	Paralegal Studies	23	3.13
PSC	Political Science	148	2.36
SOC	Sociology	379	2.83
SPA	Spanish	90	2.56
SPE	Speech	237	2.34
SSC	Social Science	19	2.79
SWO	Social Work	233	3.28
WLF	Wildlife Enforcement	17	2.65

Source: Institutional Research & Planning

Date : March 2001

Page 1 of 2

* Grades Averaged are computed on grades of A,B,C,D & F for undergraduate lecture classes of 3 or more hours.

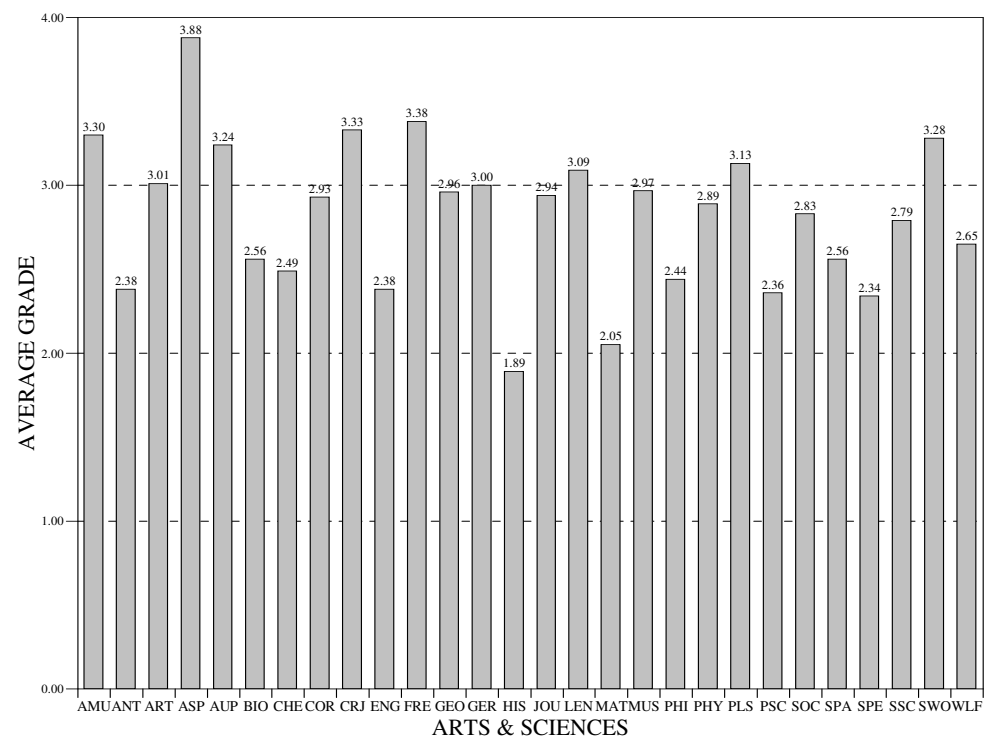
DELTA STATE UNIVERSITY
AVERAGE OF GRADES AWARDED BY DISCIPLINE *
FALL 2000

DISCIPLINE	COLLEGE/SCHOOL	# ENROLLED IN COURSES	AVERAGE G.P.A.
	<i>BUSINESS</i>	3,205	2.74
ACC	Accounting	389	2.07
BED	Business Education	1	4.00
CAV	Commercial Aviation	270	3.11
CIS	Computer Information Systems	761	2.85
ECO	Economics	369	2.51
FIN	Finance	200	2.76
GBA	General Business	217	2.80
IRR	Insurance & Real Estate	143	2.67
MGT	Management	382	3.01
MKT	Marketing	288	2.81
OAD	Office Administration	185	2.78
	<i>EDUCATION</i>	2,320	4.14
CEL	Elementary Ed.	479	2.85
CML	Media-Library Science	31	2.71
CRD	Reading Ed.	44	2.59
CSD	Secondary Ed.	15	3.07
CSP	Special Ed.	204	3.03
CUR	Curriculum	139	2.95
EPY	Educational Psychology	108	3.06
FCS	Family and Consumer Science	257	3.10
HSE	Health & Safety Ed.	130	2.86
PER	Physical Ed. & Rec.	391	3.02
PSY	Psychology	522	2.56
	<i>NURSING</i>	181	2.83
NUR	Nursing	181	2.83

Source: Institutional Research & Planning
Date : March 2001

Page 2 of 2

DELTA STATE UNIVERSITY
AVERAGE OF GRADES AWARDED BY COURSE TYPE: ARTS & SCIENCES *
FALL 2000

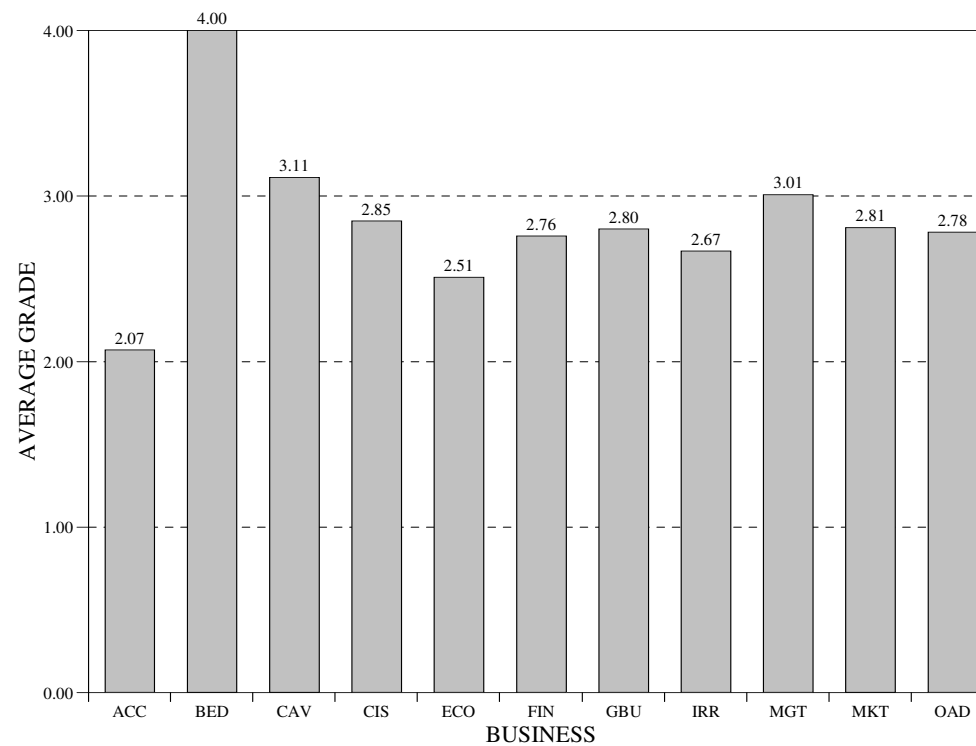


Source: Institutional Research & Planning

Date : March 2001

* Represents undergraduate classes only.

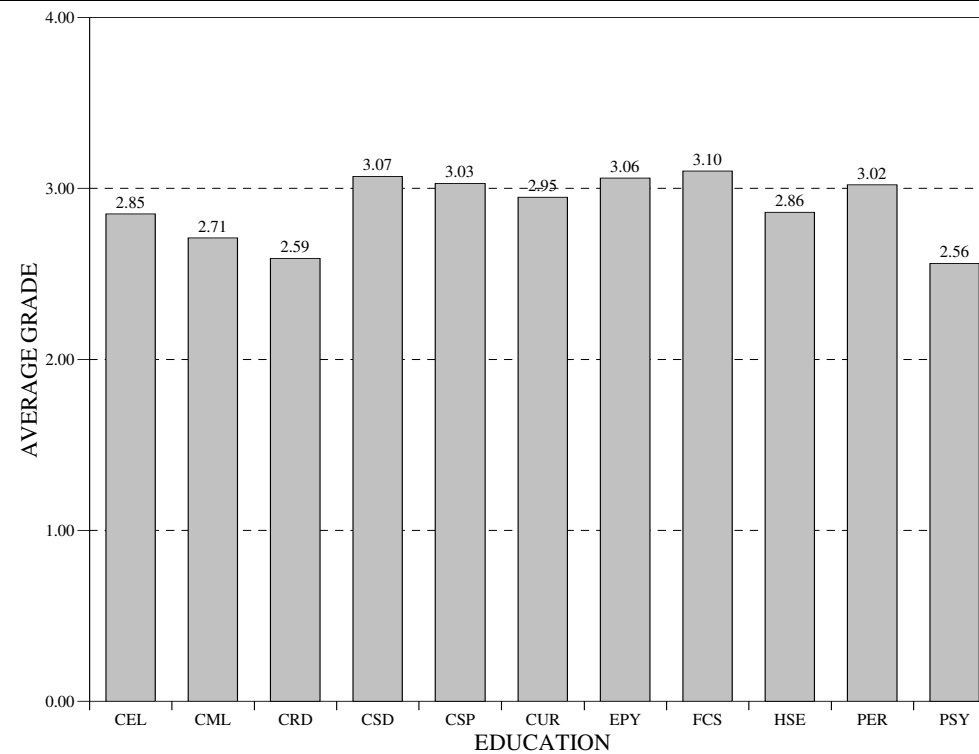
DELTA STATE UNIVERSITY
AVERAGE OF GRADES AWARDED BY COURSE TYPE: BUSINESS *
FALL 2000



Source: Institutional Research & Planning
Date : March 2001

* Represents undergraduate classes only.

DELTA STATE UNIVERSITY
AVERAGE OF GRADES AWARDED BY COURSE TYPE: EDUCATION *
FALL 2000



Source: Institutional Research & Planning
Date : March 2001

* Represents undergraduate classes only.

DELTA STATE UNIVERSITY
INTERCOLLEGIATE ATHLETICS
2000-01

TEAMS	Last Title / Championship	2000-01 Record		
		Wins	Losses	Ties
Baseball	2001 South Reg. Champions 3rd - NCAA Div. World Series	50	11	0
Basketball:				
Men's	Runner up - GSC Tournament	19	10	0
Women's	GSC West Div. Champions GSC Tournament Champions NCAA Div. II Elite 8 Participant	32	3	0
Cross-Country:				
Men's	9th Place - GSC			
Women's	10th Place - GSC			
Golf	3rd Place - GSC			
Women's Softball	5th Place - GSC	32	31	0
Tennis:				
Men's	5th Place - GSC Tournament	12	8	0
Women's	3rd Place - GSC Tournament	19	7	0
Swimming & Diving:				
Men's	2000 NSISL Champions	7	4	0
Women's	2000 NSISL Champions	7	3	0
Football	2000 GSC Tri-Champions 2000 NCAA Div. II South Region Champions 2000 NCAA Div. II National Champions	14	1	0

ATHLETIC FACILITIES

Seating Capacity

Parker Field (Football)	8,000
Walter Sillers Coliseum (Basketball)	4,000
Ferriss Field (Baseball)	1,500
DSU Aquatics Center(Swimming, Diving)	1,000
DSU Softball Field (Softball)	500

GENERAL INFORMATION

Division : National Collegiate Athletic Association (NCAA Division II)
Conference: Gulf South Conference
Nickname : Statesmen, Lady Statesmen
Colors : Forest Green and White

Source: Office of Sports Information
Date : July 2001

**DELTA STATE UNIVERSITY
FINANCIAL AID SUMMARY
2000-01**

	# of Students	TOTAL	Fall 2000	Spring 2001	Summer 2001
STUDENT LOANS	2299	\$7,995,817	\$3,647,306	\$3,675,062	\$673,449
Stafford	1406	\$5,376,690	\$2,492,068	\$2,510,398	\$374,224
Unsubsidized Stafford	648	\$2,119,478	\$948,213	\$970,339	\$200,926
PLUS	52	\$196,689	\$89,850	\$93,075	\$13,764
Perkins	184	\$289,360	\$110,375	\$94,450	\$84,535
CIOs	9	\$13,600	\$6,800	\$6,800	\$0
SCHOLARSHIPS	4733	\$7,700,255	\$1,792,891	\$1,671,493	\$185,837
Pell Grant	1353	\$2,833,266	\$1,529,357	\$1,411,682	\$38,046
SEOG	340	\$195,004	\$69,863	\$56,250	\$104,413
MSIG	55	\$29,464	\$13,275	\$7,250	\$3,747
CWS	435	\$374,871	\$180,396	\$196,311	\$39,631
Academic Schol.	676	\$1,465,023	<div>Student Applicants under 24: 3831</div> <div>Student Applicants 24 - 30: 747</div> <div>Student Applicants over 30: 555</div>		
Athletic Schol.	244	\$806,113			
Music Schol.	178	\$395,772			
Other Service	249	\$635,602			
Dependent Schol.	86	\$98,025			
MTAG	1078	\$775,525			
MESG	39	\$91,590			

	<u># of Students</u>	<u>Total / Year</u>	<u>Average Award</u>
Total Accepted All Types:	3238	\$18,901,053	\$5,837
Total Title IV Accepted:	2334	\$12,357,455	\$5,295
Total Inst. Sources Accepted:	934	\$4,360,180	\$4,668
Total Outside Sources:	816	\$2,183,418	\$2,676

Source: Student Financial Assistance
Date : August 2001

Note: Student figures are unduplicated

DELTA STATE UNIVERSITY
DEGREES OFFERED
2000-01

BACHELOR'S DEGREES

BA	BACHELOR OF ARTS
BBA	BACHELOR OF BUSINESS ADMINISTRATION
BCA	BACHELOR OF COMMERCIAL AVIATION
BFA	BACHELOR OF FINE ARTS
BM	BACHELOR OF MUSIC
BME	BACHELOR OF MUSIC EDUCATION
BS	BACHELOR OF SCIENCE
BSCJ	BACHELOR OF SCIENCE IN CRIMINAL JUSTICE
BSE	BACHELOR OF SCIENCE IN EDUCATION
BSGS	BACHELOR OF SCIENCE IN GENERAL STUDIES
BSN	BACHELOR OF SCIENCE IN NURSING
BSW	BACHELOR OF SOCIAL WORK

MASTER'S DEGREES

MBA	MASTER OF BUSINESS ADMINISTRATION
MCA	MASTER OF COMMERCIAL AVIATION
MPA	MASTER OF PROFESSIONAL ACCOUNTANCY
MED	MASTER OF EDUCATION
MME	MASTER OF MUSIC EDUCATION
MS	MASTER OF SCIENCE
MSN	MASTER OF SCIENCE IN NURSING
MSNS	MASTER OF SCIENCES IN NATURAL SCIENCES
MSW	MASTER OF SOCIAL WORK

SPECIALIST'S DEGREES

EDS	EDUCATIONAL SPECIALIST
-----	------------------------

DOCTORAL DEGREES

EDD	DOCTOR OF EDUCATION
-----	---------------------

Source: IHL Academic Program Inventory
Date : July 2000

DELTA STATE UNIVERSITY
ACADEMIC PROGRAM INVENTORY
2000-01

CIP	PROGRAMS	DEGREES	ACCREDITING BODY
52.0301	Accountancy	MPA	ACBSP
52.0301	Accounting	BBA	ACBSP
50.0101	Art	BA	NASAD & NACATE
50.0101	Art	BFA	NASAD
31.0503	Athletic Training and Sports Medicine	BS	CAAHEP
51.0204	Audiology & Speech Pathology	BS	
51.0204	Audiology & Speech Pathology	BSGS	
49.0101	Aviation Management	BCA	CAA
26.0101	Biology	BS	
13.1399	Biology Education	BSE	NCATE
52.0201	Business Administration	MBA	ACBSP
13.1303	Business Education	BSE	NCATE
40.0501	Chemistry	BS	ACS & NCATE
49.0104	Commercial Aviation	MCA	
44.0201	Community Development	MS	
52.1201	Computer Information Systems	BBA	ACBSP
13.1101	Counseling	MED	CACREP & NCATE
43.0104	Criminal Justice	BSCJ	
43.0104	Criminal Justice	MS	
13.0401	Educational Administration & Supervision	MED	NCATE
13.0401	Educational Administration & Supervision	EDS	NCATE
13.1202	Elementary Education	BSE	NCATE
13.1202	Elementary Education	MED	NCATE
13.1202	Elementary Education	EDS	NCATE
23.0101	English	BA	
13.1305	English Education	BSE	NCATE
13.1305	English Education	MED	NCATE
30.0101	Environmental Sciences	BS	
19.0101	Family and Consumer Science	BS	NCATE & AAFCS
08.0102	Fashion Merchandising	BS	AAFCS
52.0801	Finance	BBA	ACBSP
49.0102	Flight Operations	BCA	CAA
52.0101	General Business	BBA	ACBSP
13.1314	Health, Physical Education & Recreation	BSE	NCATE

Source: IHL Academic Program Inventory

Date : July 2001

Page 1 of 2

DELTA STATE UNIVERSITY
ACADEMIC PROGRAM INVENTORY
2000-01

CIP	PROGRAMS	DEGREES	ACCREDITING BODY
13.1314	Health, Physical Education & Recreation	BSGS	NCATE
13.1314	Health, Physical Education & Recreation	MED	NCATE
45.0801	History	BA	
45.0801	History	BSGS	
13.1399	History Education	MED	NCATE
52.0901	Hospitality Services Management	BBA	ACBSP
52.0805	Insurance & Real Estate	BBA	ACBSP
09.0401	Journalism	BA	
52.0201	Management	BBA	ACBSP
52.1401	Marketing	BBA	ACBSP
27.0101	Mathematics	BS	
13.1311	Mathematics Education	BSE	NCATE
13.1311	Mathematics Education	MED	NCATE
16.0101	Modern Foreign Languages	BA	NCATE
50.0901	Music	BA	NASM
50.0901	Music	BM	NASM
13.1312	Music Education	BME	NASM & NCATE
13.1312	Music Education	MME	NASM & NCATE
30.0101	Natural Sciences	MSNS	NCATE
51.1601	Nursing	BSN	NLNAC & IHL
51.1699	Nursing	MSN	NLNAC & IHL
52.0204	Office Administration	BBA	ACBSP
45.1001	Political Science	BA	
13.0101	Professional Studies	EDD	NCATE
42.0101	Psychology	BA	
13.1205	Secondary Education	EDS	NCATE
45.0101	Social Science	BS	
13.1317	Social Science Education	BSE	NCATE
13.1317	Social Science Education	MED	NCATE
44.0701	Social Work	BSW	CSWE
44.0701	Social Work	MSW	CSWE
13.1001	Special Education	BSE	NCATE
13.1001	Special Education	MED	NCATE

Source: IHL Academic Program Inventory

Date : July 2001

Page 2 of 2

DELTA STATE UNIVERSITY
DEGREES AWARDED: BY TYPE OF DEGREE
5-YEAR TREND

Degrees	1997		1998		1999		2000		2001*		5-YR Change	
	#	%	#	%	#	%	#	%	#	%	#	%
Bachelor's	570	81.7%	596	74.4%	647	74.5%	597	78.2%	600	74.8%	30	5%
BA	49	8.6%	45	7.6%	54	8.3%	34	5.7%	39	6.5%	-10	-20%
BBA	118	20.7%	151	25.3%	159	24.6%	178	29.8%	162	27.0%	44	37%
BCA	20	3.5%	19	3.2%	12	1.9%	22	3.7%	22	3.7%	2	10%
BFA	34	6.0%	20	3.4%	26	4.0%	22	3.7%	18	3.0%	-16	-47%
BM	0	0.0%	0	0.0%	0	0.0%	0	0.0%	0	0.0%	0	0%
BME	7	1.2%	5	0.8%	15	2.3%	18	3.0%	16	2.7%	9	129%
BS	83	14.6%	94	15.8%	87	13.4%	70	11.7%	96	16.0%	13	16%
BSCJ	36	6.3%	39	6.5%	29	4.5%	29	4.9%	26	4.3%	-10	-28%
BSE	109	19.1%	107	18.0%	120	18.5%	106	17.8%	115	19.2%	6	6%
BSGS	61	10.7%	54	9.1%	87	13.4%	58	9.7%	55	9.2%	-6	-10%
BSN	29	5.1%	30	5.0%	33	5.1%	24	4.0%	29	4.8%	0	0%
BSW	24	4.2%	32	5.4%	25	3.9%	36	6.0%	22	3.7%	-2	-8%
Master's	121	17.3%	196	24.5%	209	24.1%	160	21.0%	186	23.2%	65	54%
MBA	11	9.1%	23	11.7%	37	17.7%	27	16.9%	38	20.4%	27	245%
MCA	2	1.7%	2	1.0%	0	0.0%	5	3.1%	3	1.6%	1	50%
MPA	8	6.6%	6	3.1%	6	2.9%	9	5.6%	3	1.6%	-5	-63%
MED	68	56.2%	115	58.7%	119	56.9%	85	53.1%	97	52.2%	29	43%
MME	1	0.8%	2	1.0%	4	1.9%	1	0.6%	3	1.6%	2	200%
MSCD	0	0.0%	4	2.0%	6	2.9%	7	4.4%	4	2.2%	4	0%
MSCJ	4	3.3%	7	3.6%	5	2.4%	8	5.0%	5	2.7%	0	0%
MSN	18	14.9%	19	9.7%	20	9.6%	8	5.0%	19	10.2%	1	6%
MSNS	9	7.4%	18	9.2%	12	5.7%	10	6.3%	14	7.5%	5	56%
Specialist's	3	0.4%	8	1.0%	5	0.6%	4	0.5%	14	1.7%	11	367%
EDS	3	100%	8	100%	5	100%	4	100%	14	100%	11	367%
Doctoral	4	0.6%	1	0.1%	7	0.8%	2	0.3%	2	0.2%	-2	-50%
EDD	4	100%	1	100%	7	100%	2	100%	2	100%	-2	-50%
TOTAL	698	100%	801	100%	868	100%	763	100%	802	100%	104	15%

Source: Office of the Registrar
Date : June 2001

* Total degrees awarded in December and May

**DELTA STATE UNIVERSITY
DEGREES CONFERRED BY CIP CATEGORY
5-YEAR TREND**

DEGREES	YEAR 1997	YEAR 1998	YEAR 1999	YEAR 2000	YEAR 2001**
BACHELOR'S DEGREE	570	596	647	597	600
Marketing & Distribution	4	3	6	1	3
Communications	--	--	--	--	1
Education	136	126	157	139	165
Foreign, Lang. & Lit./Letters	2	1	2	3	1
Home Economics	12	20	14	9	19
English, Lang. & Lit./Letters	16	9	20	7	5
Bio. Sciences/Life Sciences	39	43	38	23	37
Mathematics	9	3	2	3	6
Multi/Interdisciplinary Studies	3	10	5	4	1
Physical Sciences	18	8	10	17	12
Psychology	21	22	21	14	17
Protective Services	36	39	29	29	26
Public Admin. & Services	24	32	25	36	22
Social Sciences & History	34	38	64	47	32
Transportation & Materials	20	19	12	22	22
Visual & Performing Arts	36	24	30	26	26
Health Profession & Related Sci.	42	48	53	39	43
Business Mgt. & Admin. Services	118	151	159	178	162
MASTER'S DEGREE	121	196	209	160	186
Education	69	116	123	86	100
Health Profession & Related Sci.	18	19	20	8	19
Multi/Interdisciplinary Studies*	9	18	12	10	14
Protective Services*	4	7	5	8	5
Public Admin. & Services*	0	5	6	7	4
Transportation & Materials*	2	2	0	5	3
Business Mgt. & Admin. Services	19	29	43	36	41
SPECIALIST'S DEGREE	3	8	5	4	14
Education	3	8	5	4	14
DOCTORAL DEGREE	4	1	7	2	2
Education	4	1	7	2	2
GRAND TOTAL - ALL DEGREES	698	801	868	763	802
Source: IHL Statistical Report * New degree program					
Date : July 2001 ** Total degrees awarded in December and May					

DELTA STATE UNIVERSITY
DEGREES AWARDED BY COLLEGE, SCHOOL AND DEPARTMENT
5-YEAR TREND

DEGREES	1998		1999		2000		2001*		2002*		5-YR Change	
	#	%	#	%	#	%	#	%	#	%	#	%
A&S	300	38%	336	40%	286	38%	264	34%	288	35%	-12	-4%
Art	22	7%	27	8%	23	8%	24	9%	29	10%	7	32%
BA	2	9%	1	4%	1	4%	6	25%	5	17%	3	-
BSGS	0	0%	0	0%	0	0%	0	0%	0	0%	0	0%
BFA	20	91%	26	96%	22	96%	18	75%	24	83%	4	20%
Aud. / Sp. Path.	17	6%	20	6%	15	5%	14	5%	11	4%	-6	-35%
BSGS	10	59%	8	40%	3	20%	0	0%	0	0%	-10	-100%
BS	7	41%	12	60%	12	80%	14	100%	11	100%	4	-
Biological Sci.	59	20%	51	15%	30	10%	42	16%	49	17%	-10	-17%
BSE	6	10%	8	16%	3	10%	4	10%	5	10%	-1	-17%
BS	43	73%	38	75%	23	77%	37	88%	36	73%	-7	-16%
BS-Env. Sci.	10	17%	5	10%	4	13%	1	2%	8	16%	-2	-20%
History	12	4%	14	4%	7	2%	10	4%	8	3%	-4	-33%
BA	7	58%	5	36%	2	29%	5	50%	6	75%	-1	-14%
BSGS	2	17%	1	7%	1	14%	0	0%	0	0%	-2	-100%
MED	3	25%	8	57%	4	57%	5	50%	2	25%	-1	-33%
Lang., Lit. & Phil.	14	5%	32	10%	14	5%	14	5%	27	9%	13	93%
BA	10	71%	19	59%	10	71%	7	50%	16	59%	6	60%
BSGS	0	0%	3	9%	0	0%	0	0%	0	0%	0	-
BSE	3	21%	5	16%	4	29%	4	29%	8	30%	5	167%
MED	1	7%	5	16%	0	0%	3	21%	3	11%	2	200%
Mathematics	9	3%	9	3%	7	2%	12	5%	6	2%	-3	-33%
BS	1	11%	2	22%	3	43%	6	50%	5	83%	4	400%
BSE	6	67%	5	56%	3	43%	6	50%	1	17%	-5	-83%
BSGS	2	22%	0	0%	0	0%	0	0%	0	0%	-2	0%
MED	0	0%	2	22%	1	14%	0	0%	0	0%	0	0%
Music	9	3%	22	7%	22	8%	21	8%	18	6%	9	100%
BM	0	0%	0	0%	0	0%	0	0%	2	11%	2	0%
BME	5	56%	15	68%	18	82%	16	76%	8	44%	3	60%
BA	2	22%	3	14%	3	14%	2	10%	3	17%	1	50%
MME	2	22%	4	18%	1	5%	3	14%	5	28%	3	-

Source: Office of the Registrar
Date : June 2002

** Total degrees awarded in December and May

DELTA STATE UNIVERSITY
DEGREES AWARDED BY COLLEGE, SCHOOL AND DEPARTMENT
5-YEAR TREND

DEGREES	1998		1999		2000		2001**		2002**		5-YR Change	
	#	%	#	%	#	%	#	%	#	%	#	%
A&S (CONT.)												
Natural Sci.	18	6%	12	4%	10	3%	14	5%	9	3%	-9	-50%
MSNS	18	100%	12	100%	10	100%	14	100%	9	100%	-9	-50%
Physical Sci.	10	3%	10	3%	17	6%	12	5%	9	3%	-1	-10%
BSE	0	0%	0	0%	0	0%	0	0%	0	0%	0	0%
BS	10	100%	10	100%	17	100%	12	100%	9	100%	-1	-10%
Social Sci.	98	33%	114	34%	105	37%	79	30%	101	35%	3	3%
BSE	8	8%	5	4%	6	6%	12	15%	14	14%	6	75%
BA	2	2%	5	4%	4	4%	2	3%	8	8%	6	300%
BS	0	0%	0	0%	1	1%	4	5%	3	3%	3	-
BSCJ	39	40%	29	25%	29	28%	26	33%	25	25%	-14	-36%
BSGS	27	28%	53	46%	39	37%	21	27%	22	22%	-5	-19%
MED	11	11%	11	10%	11	10%	5	6%	11	11%	0	0%
MSCD	4	4%	6	5%	7	7%	4	5%	10	10%	-	-
MSCJ	7	7%	5	4%	8	8%	5	6%	8	8%	1	-
Social Work	32	11%	25	7%	36	13%	22	8%	21	7%	-11	-34%
BSW	32	100%	25	100%	36	100%	22	100%	21	100%	-11	-34%
Business	207	27%	220	26%	243	33%	233	30%	233	28%	26	13%
Accounting & CIS*	24	12%	34	15%	69	28%	66	28%	54	23%	30	125%
BBA	18	75%	28	82%	60	87%	63	95%	52	96%	34	189%
MPA	6	25%	6	18%	9	13%	3	5%	2	4%	-4	-67%
Bus. Admin.	23	11%	37	17%	27	11%	38	16%	43	18%	20	87%
MBA	23	100%	37	100%	27	100%	38	100%	43	100%	20	87%
Comm. Avia.	21	10%	12	5%	27	11%	25	11%	15	6%	-6	-29%
BCA	19	90%	12	100%	22	81%	22	88%	12	80%	-7	-37%
MCA	2		0	0%	5	19%	3	12%	3	20%	1	-
CIS & OAD	38	18%	48	22%	0	0%	-	-	-	-	-	-
BBA	32	84%	42	0%	-	-	-	-	-	-	-	-
BSE	6	16%	6	0%	-	-	-	-	-	-	-	-
ECO & FIN	53	26%	48	22%	56	23%	57	24%	51	22%	-2	-4%
BBA	53	100%	48	100%	56	100%	57	100%	51	100%	-2	-4%
Mgt., Mkt., OAD, & BED*	48	23%	41	19%	64	19%	47	20%	70	30%	22	46%
BBA	48	100%	41	100%	62	97%	42	89%	67	96%	19	40%
BSE	-	-	-	-	2	-	5	11%	3	4%	-	-

Source: Office of the Registrar
Date : June 2002

* Combined in Fall 1999
Page 2 of 3 ** Total degrees awarded in December and May

DELTA STATE UNIVERSITY
DEGREES AWARDED BY COLLEGE, SCHOOL AND DEPARTMENT
5-YEAR TREND

DEGREES	1998		1999		2000		2001*		2002*		5-YR Change	
	#	%	#	%	#	%	#	%	#	%	#	%
Education	225	29%	241	28%	186	25%	236	30%	262	32%	37	16%
Behavioral Science	46	20%	41	17%	23	12%	37	16%	23	9%	-23	-50%
BA	0	0%	0	0%	0	0%	0	0%	0	0%	0	0%
BSE	13	28%	7	17%	5	22%	11	30%	5	22%	-8	-62%
MED	33	72%	34	83%	15	65%	26	70%	18	78%	-15	-45%
EDS	0	0%	0	0%	3	13%	0	0%	0	0%	0	0%
Curriculum & Instr.	114	51%	129	54%	117	63%	124	53%	117	45%	3	3%
BSE	58	51%	76	59%	76	65%	71	57%	74	63%	16	28%
MED	47	41%	41	32%	38	32%	37	30%	29	25%	-18	-38%
EDS	8	7%	5	4%	1	1%	14	11%	11	9%	3	38%
EDD	1	1%	7	5%	2	2%	2	2%	3	3%	2	200%
Health PE & Rec.	20	9%	30	12%	22	12%	36	15%	80	31%	60	300%
BS	-	-	-	-	-	-	-	0	1	1%	1	0%
BSE	7	35%	8	27%	7	32%	2	6%	10	13%	3	43%
BSGS	13	65%	22	73%	15	68%	34	94%	51	64%	38	292%
MED	20	100%	18	60%	16	73%	21	58%	18	23%	-2	-10%
Family & Cons. Sci.	23	10%	20	8%	10	5%	22	9%	20	8%	-3	-13%
BS-Fshn. Mds.	2	9%	6	30%	1	10%	3	14%	6	30%	4	200%
BS-Fam. & Con. Sci.	21	91%	14	70%	9	90%	19	86%	14	70%	-7	-33%
Psychology	22	10%	21	9%	14	8%	17	7%	22	8%	0	0%
BA	22	100%	21	100%	14	100%	17	100%	22	100%	0	0%
Nursing	49	6%	53	6%	32	4%	48	6%	41	5%	-8	-16%
Nursing	49	100%	53	100%	32	100%	48	100%	41	100%	-8	-16%
BSN	30	61%	33	62%	24	75%	29	60%	31	76%	1	3%
MSN	19	0%	20	0%	8	0%	19	0%	10	0%	0	0%
Univ. Total	781	100%	850	100%	747	100%	781	100%	824	100%	43	6%

Source: Office of the Registrar
Date : June 2002

* Total degrees awarded in December and May

DELTA STATE UNIVERSITY
DEGREES AWARDED BY UNDERGRADUATE MAJORS
2000-01

DEGREES	#	%	DEGREES	#	%
ARTS & SCIENCES	225	38%	BUSINESS	189	32%
Art	24	11%	Accounting	24	13%
Audiology & Speech Path.	14	6%	Aviation Management	6	3%
Biology	37	16%	Business Education	5	3%
Biology Education	4	2%	Comp. Info. Systems (1)	39	21%
Chemistry (3)	12	5%	Finance (4)	11	6%
Chemistry Education	0	0%	Flight Operations	16	8%
Criminal Justice	26	12%	General Business	32	17%
English	5	2%	Insurance and Real Estate	14	7%
English Education	4	2%	Management (4)	11	6%
Environmental Science	1	0%	Marketing	26	14%
History	5	2%	Office Administration (9)	5	3%
Journalism	1	0%			
Mathematics	6	3%	EDUCATION	157	26%
Mathematics Education	6	3%	Elementary Education	71	45%
Medical Technology	0	0%	Family & Consumer Sciences	19	12%
Modern Foreign Languages	1	0%	Fashion Merchandising	3	2%
Music (1)	2	1%	Health, PE & Recreation	36	23%
Music Education	16	7%	Psychology	17	11%
Political Science (1)	2	1%	Special Education	11	7%
Social Science	25	11%	NURSING	29	5%
Social Science Education	12	5%	Nursing	29	100%
Social Work	22	10%			
Sociology	0	0%	UNIVERSITY TOTALS	600	100%

Source: Office of the Registrar

Date : June 2001

() Denotes the number of additional 2nd majors

DELTA STATE UNIVERSITY
DEGREES AWARDED BY UNDERGRADUATE MAJORS
DECEMBER 2000

DEGREES	#	%	DEGREES	#	%
ARTS & SCIENCES	75	34%	BUSINESS	76	34%
Art	6	8%	Accounting	10	13%
Audiology & Speech Path.	7	9%	Aviation Management	3	4%
Biology	10	13%	Business Education	1	1%
Biology Education	2	3%	Comp. Info. Systems	21	28%
Chemistry (1)	2	3%	Finance (4)	2	3%
Chemistry Education	0	0%	Flight Operations	8	11%
Criminal Justice	10	13%	General Business	13	17%
English	1	1%	Insurance and Real Estate	2	3%
English Education	1	1%	Management (1)	4	5%
Environmental Science	1	1%	Marketing	11	14%
History	2	3%	Office Administration (9)	1	1%
Journalism	0	0%			
Mathematics	2	3%	EDUCATION	72	32%
Mathematics Education	1	1%	Elementary Education	32	44%
Medical Technology	0	0%	Family & Consumer Sciences	13	18%
Modern Foreign Languages	1	1%	Fashion Merchandising	1	1%
Music	0	0%	Health, PE & Recreation	15	21%
Music Education	8	11%	Psychology	6	8%
Political Science (1)	1	1%	Special Education	5	7%
Social Science	14	19%	NURSING	0	0%
Social Science Education	5	7%	Nursing	0	0%
Social Work	1	1%			
Sociology	0	0%	UNIVERSITY TOTALS	223	100%

Source: Office of the Registrar

Date : January 2001

() Denotes the number of additional 2nd majors

DELTA STATE UNIVERSITY
DEGREES AWARDED BY UNDERGRADUATE MAJORS
MAY 2001

DEGREES	#	%	DEGREES	#	%
ARTS & SCIENCES	150	40%	BUSINESS	113	30%
Art	18	12%	Accounting	14	12%
Audiology & Speech Path.	7	5%	Aviation Management	3	3%
Biology	27	18%	Business Education	4	4%
Biology Education	2	1%	Comp. Info. Systems (1)	18	16%
Chemistry (2)	10	7%	Finance	9	8%
Chemistry Education	0	0%	Flight Operations	8	7%
Criminal Justice	16	11%	General Business	19	17%
English	4	3%	Insurance and Real Estate	12	11%
English Education	3	2%	Management (3)	7	6%
Environmental Science	0	0%	Marketing	15	13%
History	3	2%	Office Administration	4	4%
Journalism	1	1%			
Mathematics	4	3%	EDUCATION	85	23%
Mathematics Education	5	3%	Elementary Education	39	46%
Medical Technology	0	0%	Family & Consumer Sciences	6	7%
Modern Foreign Languages	0	0%	Fashion Merchandising	2	2%
Music (1)	2	1%	Health, PE & Recreation	21	25%
Music Education	8	5%	Psychology	11	13%
Political Science	1	1%	Special Education	6	7%
Social Science	11	7%	NURSING	29	8%
Social Science Education	7	5%	Nursing	29	34%
Social Work	21	14%			
Sociology	0	0%	UNIVERSITY TOTALS	377	100%

Source: Office of the Registrar

Date : June 2001

() Denotes the number of additional 2nd majors

DELTA STATE UNIVERSITY
DEGREES AWARDED BY GRADUATE MAJORS
2000-01

DEGREES	#	%	DEGREES	#	%
ARTS & SCIENCES	35	17%	BUSINESS	44	22%
Criminal Justice	5	14%	Accounting	3	7%
History Education	5	14%	Business Administration	38	86%
Mathematics Education	0	0%	Commercial Aviation	3	7%
Music Education	3	9%			
Natural Sciences	14	40%			
Social Science Education	5	14%			
English Education	3	9%			
			EDUCATION	104	51%
			Community Counseling	8	8%
			Community Development	4	4%
			Educational Administration*	11	11%
			Educational Leadership	15	14%
			Elementary Education*	3	3%
			Elementary Education	22	21%
			Health, PE, & Recreation	21	20%
			Professional Studies**	2	2%
			School Counseling	10	10%
			Special Education	8	8%
			NURSING	19	9%
			Nursing	19	100%
			UNIVERSITY TOTALS	202	100%

Source: Office of the Registrar
Date : June 2001

* Denotes EDS
** Denotes EDD

DELTA STATE UNIVERSITY
DEGREES AWARDED BY GRADUATE MAJORS
DECEMBER 2000

DEGREES	#	%	DEGREES	#	%
ARTS & SCIENCES	21	16%	BUSINESS	21	16%
Criminal Justice	2	10%	Accounting	0	0%
History Education	5	24%	Business Administration	20	95%
Mathematics Education	0	0%	Commercial Aviation	1	5%
Music Education	1	5%			
Natural Sciences	9	43%			
Social Science Education	2	10%			
English Education	2	10%			
			EDUCATION	72	55%
			Community Counseling	5	7%
			Community Development	0	0%
			Educational Administration*	11	15%
			Educational Leadership	15	21%
			Elementary Education*	3	4%
			Elementary Education	15	21%
			Health, PE, & Recreation	15	21%
			Professional Studies**	1	1%
			School Counseling	2	3%
			Special Education	5	7%
			NURSING	17	13%
			Nursing	17	100%
			UNIVERSITY TOTALS	131	100%

Source: Office of the Registrar
Date : January 2001

* Denotes EDS
** Denotes EDD

DELTA STATE UNIVERSITY
DEGREES AWARDED BY GRADUATE MAJORS
MAY 2001

DEGREES	#	%	DEGREES	#	%
ARTS & SCIENCES	14	20%	BUSINESS	23	32%
Criminal Justice	3	21%	Accounting	3	13%
History Education	0	0%	Business Administration	18	78%
Mathematics Education	0	0%	Commercial Aviation	2	9%
Music Education	2	14%			
Natural Sciences	5	36%			
Social Science Education	3	21%			
English Education	1	7%			
			EDUCATION	32	45%
			Community Counseling	3	9%
			Community Development	4	13%
			Educational Administration*	0	0%
			Educational Leadership	0	0%
			Elementary Education*	0	0%
			Elementary Education	7	22%
			Health, PE, & Recreation	6	19%
			Professional Studies**	1	3%
			School Counseling	8	25%
			Special Education	3	9%
			NURSING	2	3%
			Nursing	2	100%
			UNIVERSITY TOTALS	71	100%

Source: Office of the Registrar
Date : June 2001

* Denotes EDS
** Denotes EDD

**DELTA STATE UNIVERSITY
GRADUATION WITH HONORS
2000-01**

	Honors		Total	All	%
	2 yr.	4 yr.	Honors	Graduates	Honors
ARTS & SCIENCES	25	35	60	224	26.8%
Bach. of Arts	6	4	10	21	47.6%
Bach. of Fine Arts	3	2	5	18	27.8%
Bach. of Music	0	0	0	0	0.0%
Bach. of Music Education	1	5	6	16	37.5%
Bach. of Science	5	15	20	74	27.0%
Bach. of Science in Crim. Just.	2	2	4	26	15.4%
Bach. of Science in Education	5	6	11	26	42.3%
Bach. of Science in Gen. Stud.	0	1	1	21	4.8%
Bach. of Social Work	3	0	3	22	13.6%
BUSINESS	20	15	35	188	18.6%
Bach. of Business Admin.	16	11	27	162	16.7%
Bach. of Commercial Aviation	3	4	7	22	31.8%
Bach. of Science in Education	1	0	1	4	25.0%
EDUCATION	18	10	28	157	17.8%
Bach. of Arts	1	2	3	17	17.6%
Bach. of Science	3	2	5	22	22.7%
Bach. of Science in Education	13	6	19	84	22.6%
Bach. of Science in Gen. Stud.	1	0	1	34	2.9%
NURSING	5	4	9	29	31.0%
Bach. of Science in Nursing	5	4	9	29	31.0%
TOTALS	68	64	132	598	22.1%

Source: Office of the Registrar
Date : June 2001

**DELTA STATE UNIVERSITY
GRADUATION WITH HONORS
5-YEAR TREND**

	1997		1998		1999		2000		2001*	
HONORS:	2 yr.	4 yr.	2 yr.	4 yr.	2 yr.	4 yr.	2 yr.	4 yr.	2 yr.	4 yr.
ARTS & SCIENCES	22	33	14	33	25	30	23	24	25	35
Bach. of Arts	5	8	1	4	3	5	2	2	6	4
Bach. of Fine Arts	5	7	2	1	2	5	1	1	3	2
Bach. of Music	0	0	0	0	0	0	0	0	0	0
Bach. of Music Education	1	0	0	2	2	2	3	6	1	5
Bach. of Science	3	11	3	20	7	13	8	13	5	15
Bach. of Science in Crim. Just.	1	1	1	0	0	1	4	0	2	2
Bach. of Science in Education	4	1	1	2	5	2	2	1	5	6
Bach. of Science in Gen. Stud.	1	5	1	4	2	1	2	1	0	1
Bach. of Social Work	2	0	5	0	4	1	1	0	3	0
BUSINESS	14	7	9	12	13	14	13	18	20	15
Bach. of Business Admin.	13	5	7	10	8	12	11	16	16	11
Bach. of Commercial Aviation	1	2	2	2	3	1	2	2	3	4
Bach. of Science in Education	0	0	0	0	2	1	0	0	1	0
EDUCATION	17	9	25	6	15	13	12	10	18	10
Bach. of Arts	1	6	1	2	3	4	0	0	1	2
Bach. of Science	0	0	1	0	1	2	0	0	3	2
Bach. of Science in Education	16	3	22	4	11	7	11	9	13	6
Bach. of Science in Gen. Stud.	0	0	1	0	0	0	1	1	1	0
NURSING	6	2	10	6	2	1	6	5	5	4
Bach. of Science in Nursing	6	2	10	6	2	1	6	5	5	4
TOTAL HONORS AWARDED	59	51	58	57	55	58	54	57	68	64

Source: Office of the Registrar
Date : June 2001

* Includes December and May graduates

DELTA STATE UNIVERSITY
FACULTY PROFILE: UNIVERSITY TOTALS
FALL 2000

	PROFESSOR			ASSOC. PROF.			ASSIS. PROF.			INSTRUCTOR			ALL RANKS		
	FT	PT	Total	FT	PT	Total	FT	PT	Total	FT	PT	Total	FT	PT	Total
Headcount	67	24	91	22	7	29	59	12	71	34	65	99	182	108	290
FTE	73.67	9.53	83.2	22.6	2.45	25.05	61.7	4.27	65.97	35.22	21.51	56.73	193.2	37.76	231
Men	49	16	65	13	4	17	28	7	35	10	35	45	100	62	162
Women	18	8	26	9	3	12	31	5	36	24	30	54	82	46	128
Tenured	62	18	80	7	2	9	11	0	11	0	0	0	80	20	100
Not Tenured	5	6	11	15	5	20	48	12	60	34	65	99	102	88	190
Doctoral	57	22	79	20	6	26	26	6	32	0	12	12	103	46	149
First Professional	1	0	1	0	0	0	0	0	0	0	1	1	1	1	2
Specialist	0	0	0	0	0	0	2	0	2	0	4	4	2	4	6
Master's Degree	8	2	10	2	0	2	30	6	36	33	44	77	73	52	125
Bachelor's Degree	1	0	1	0	1	1	1	0	1	1	4	5	3	5	8
Caucasian	65	21	86	20	6	26	53	12	65	30	57	87	168	96	264
Asian	0	0	0	1	0	1	1	0	1	0	0	0	2	0	2
Black	1	3	4	1	1	2	5	0	5	4	8	12	11	12	23
Hispanic	1	0	1	0	0	0	0	0	0	0	0	0	1	0	1
Average Salary *	\$55,173			\$48,050			\$40,900			\$36,347			\$46,210		

Source: Office of Institutional Research & Planning

* Based on salary of filled positions only.

Date : March 2001

DELTA STATE UNIVERSITY
FACULTY PROFILE: COLLEGE OF ARTS AND SCIENCES
FALL 2000

	PROFESSOR			ASSOC. PROF.			ASSIS. PROF.			INSTRUCTOR			ALL RANKS		
	FT	PT	Total	FT	PT	Total	FT	PT	Total	FT	PT	Total	FT	PT	Total
Headcount	47	9	56	9	2	11	31	4	35	17	20	37	104	35	139
FTE	52.44	3.58	56.02	9.55	0.5	10.05	32.67	1.62	34.29	18.07	7.09	25.16	112.7	12.79	125.52
Men	36	6	42	5	1	6	15	2	17	6	15	21	62	24	86
Women	11	3	14	4	1	5	16	2	18	11	5	16	42	11	53
Tenured	43	7	50	2	1	3	6	0	6	0	0	0	51	8	59
Not Tenured	4	2	6	7	1	8	25	4	29	17	20	37	53	27	80
Doctoral	39	7	46	8	1	9	14	2	16	0	4	4	61	14	75
First Professional	0	0	0	0	0	0	0	0	0	0	1	1	0	1	1
Specialist	0	0	0	0	0	0	0	0	0	0	1	1	0	1	1
Master's Degree	7	2	9	1	0	1	16	2	18	16	11	27	40	15	55
Bachelor's Degree	1	0	1	0	1	1	1	0	1	1	3	4	3	4	7
Caucasian	46	8	54	9	1	10	28	4	32	16	16	32	99	29	128
Asian	0	0	0	0	0	0	0	0	0	0	0	0	0	0	0
Black	0	1	1	0	1	1	3	0	3	1	4	5	4	6	10
Hispanic	1	0	1	0	0	0	0	0	0	0	0	0	1	0	1
Average Salary *	\$51,956			\$42,182			\$37,498			\$33,239			\$44,238		

Source: Office of Institutional Research & Planning

* Based on salary of filled positions only.

Date : March 2001

DELTA STATE UNIVERSITY
FACULTY PROFILE: COLLEGE OF BUSINESS
FALL 2000

	PROFESSOR			ASSOC. PROF.			ASSIS. PROF.			INSTRUCTOR			ALL RANKS		
	FT	PT	Total	FT	PT	Total	FT	PT	Total	FT	PT	Total	FT	PT	Total
Headcount	7	4	11	7	1	8	8	2	10	11	11	22	33	18	51
FTE	7.66	1	8.66	7.05	0.25	7.3	8.25	0.5	8.75	11.15	4.00	15.15	34.11	5.75	39.86
Men	6	4	10	6	0	6	6	2	8	3	4	7	21	10	31
Women	1	0	1	1	1	2	2	0	2	8	7	15	12	8	20
Tenured	7	4	11	2	0	2	4	0	4	0	0	0	13	4	17
Not Tenured	0	0	0	5	1	6	4	2	6	11	11	22	20	14	34
Doctoral	5	4	9	6	1	7	1	2	3	0	0	0	12	7	19
First Professional	1	0	1	0	0	0	0	0	0	0	0	0	1	0	1
Specialist	0	0	0	0	0	0	1	0	1	0	0	0	1	0	1
Master's Degree	1	0	1	1	0	1	6	0	6	11	11	22	19	11	30
Bachelor's Degree	0	0	0	0	0	0	0	0	0	0	0	0	0	0	0
Caucasian	6	4	10	6	1	7	7	2	9	9	11	20	28	18	46
Asian	0	0	0	1	0	1	1	0	1	0	0	0	2	0	2
Black	1	0	1	0	0	0	0	0	0	2	0	2	3	0	3
Hispanic	0	0	0	0	0	0	0	0	0	0	0	0	0	0	0
Average Salary *	\$66,440			\$51,679			\$47,307			\$38,444			\$50,079		

Source: Office of Institutional Research & Planning * Based on salary of filled positions only.
Date : March 2001

DELTA STATE UNIVERSITY
FACULTY PROFILE: COLLEGE OF EDUCATION
FALL 2000

	PROFESSOR			ASSOC. PROF.			ASSIS. PROF.			INSTRUCTOR			ALL RANKS		
	FT	PT	Total	FT	PT	Total	FT	PT	Total	FT	PT	Total	FT	PT	Total
Headcount	12	9	21	6	4	10	14	6	20	2	28	30	34	47	81
FTE	12.57	4	16.57	6	1.7	7.7	14.78	2.15	16.93	2	8.73	10.73	35.35	16.58	51.93
Men	7	6	13	2	3	5	7	3	10	1	15	16	17	27	44
Women	5	3	8	4	1	5	7	3	10	1	13	14	17	20	37
Tenured	12	6	18	3	1	4	0	0	0	0	0	0	15	7	22
Not Tenured	0	3	3	3	3	6	14	6	20	2	28	30	19	40	59
Doctoral	12	9	21	6	4	10	10	2	12	0	7	7	28	22	50
First Professional	0	0	0	0	0	0	0	0	0	0	0	0	0	0	0
Specialist	0	0	0	0	0	0	1	0	1	0	0	3	1	0	1
Master's Degree	0	0	0	0	0	0	3	4	7	2	17	19	5	21	26
Bachelor's Degree	0	0	0	0	0	0	0	0	0	0	1	1	0	1	1
Caucasian	12	7	19	5	4	9	13	6	19	2	26	28	32	43	75
Asian	0	0	0	0	0	0	0	0	0	0	0	0	0	0	0
Black	0	2	2	1	0	1	1	0	1	0	2	2	2	4	6
Hispanic	0	0	0	0	0	0	0	0	0	0	0	0	0	0	0
Average Salary *	\$57,631			\$48,418			\$41,433			\$36,083			\$48,505		

Source: Office of Institutional Research & Planning

* Based on salary of filled positions only.

Date : March 2001

DELTA STATE UNIVERSITY
FACULTY PROFILE: SCHOOL OF NURSING
FALL 2000

	PROFESSOR			ASSOC. PROF.			ASSIS. PROF.			INSTRUCTOR			ALL RANKS		
	FT	PT	Total	FT	PT	Total	FT	PT	Total	FT	PT	Total	FT	PT	Total
Headcount	1	2	3	0	0	0	6	0	6	4	5	9	11	7	18
FTE	1	0.95	1.95	0	0	0	6	0	6	4	1.50	5.5	11	2.45	13.45
Men	0	0	0	0	0	0	0	0	0	0	0	0	0	0	0
Women	1	2	3	0	0	0	6	0	6	4	5	9	11	7	18
Tenured	0	1	1	0	0	0	1	0	1	0	0	0	1	1	2
Not Tenured	1	1	2	0	0	0	5	0	5	4	5	9	10	6	16
Doctoral	1	2	3	0	0	0	1	0	1	0	1	1	2	3	5
First Professional	0	0	0	0	0	0	0	0	0	0	0	0	0	0	0
Specialist	0	0	0	0	0	0	0	0	0	0	0	0	0	0	0
Master's Degree	0	0	0	0	0	0	5	0	5	4	4	8	9	4	13
Bachelor's Degree	0	0	0	0	0	0	0	0	0	0	0	0	0	0	0
Caucasian	1	2	3	0	0	0	5	0	5	3	3	6	9	5	14
Asian	0	0	0	0	0	0	0	0	0	0	0	0	0	0	0
Black	0	0	0	0	0	0	1	0	1	1	2	3	2	2	4
Hispanic	0	0	0	0	0	0	0	0	0	0	0	0	0	0	0
Average Salary *	\$61,585			\$0			\$51,241			\$45,076			\$49,940		

Source: Office of Institutional Research & Planning
Date : March 2001

* Based on salary of filled positions only.

**DELTA STATE UNIVERSITY
PUPIL-TEACHER RATIO
FALL 2000**

	FTE Faculty	Credit Hours*	FTE Students	PTR
UNIVERSITY TOTAL	230.70	45,191	3,062.86	13
ARTS & SCIENCES	126.52	22,214	1,489.98	12
Aerospace	1.00	34	2.27	2
Art	13.25	2,340	156.25	12
Audiology & Speech Pathology	3.25	381	25.40	8
Biological Sciences	13.11	2,675	180.42	14
History	7.50	1,860	124.80	17
Languages, Literature and Philosophy	27.96	5,610	374.70	13
Mathematics	9.00	2,474	164.93	18
Military Science**	0.00	0	0.00	0
Music	20.02	1,278	85.36	4
Physical Sciences	10.30	1,846	123.72	12
Social Sciences	16.51	3,017	205.53	12
Social Work	4.62	699	46.60	10
BUSINESS***	39.05	10,622	718.69	18
Accounting and Computer Info Systems	15.19	3,642	244.65	16
Commercial Aviation	5.00	1,108	74.97	15
Economics & Finance	8.75	3,054	207.00	24
Management, Marketing, OAD, & BED	10.11	2,818	192.07	19
EDUCATION	51.68	11,229	775.22	15
Behavioral Sciences	8.35	1,748	127.25	15
C & I, Leadership, & Research	18.70	3,830	269.03	14
H P E & R	13.38	3,316	223.27	17
Family & Consumer Science	5.50	757	50.47	9
Psychology	5.75	1,578	105.20	18
NURSING	13.45	1,126	78.97	6
Nursing	13.45	1,126	78.97	6

Source: Institutional Research & Planning

Date : March 2001

* Undergraduate & Graduate data combined

** Program discontinued in Summer 1995

*** Does not include EBBA or EMBA

DELTA STATE UNIVERSITY
FACULTY CHARACTERISTICS
1991 - 2000

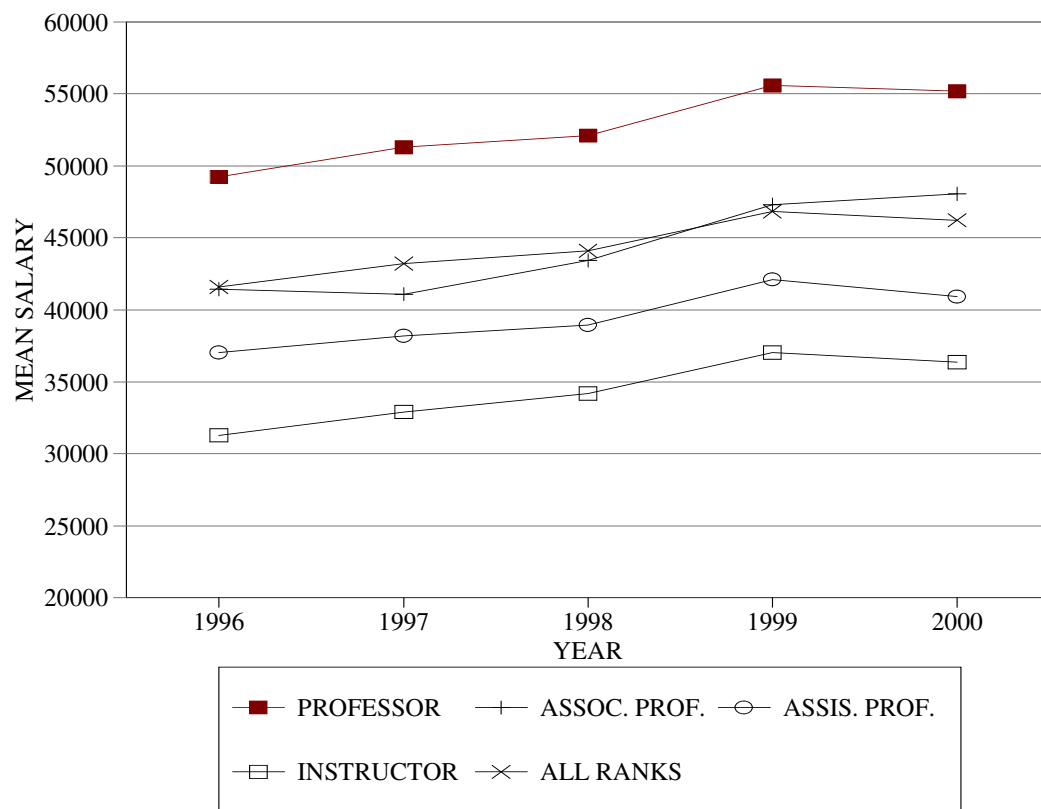
SCHOOL YEAR	1991-92	1992-93	1993-94	1994-95	1995-96	1996-97	1997-98	1998-99	1999-2000	2000-01
Tenured	65	60	66	78	83	93	95	90	88	100
Not-Tenured, Tenure Track	95	98	96	99	93	89	90	93	99	78
Not-Tenured	103	102	104	92	90	94	90	87	97	112
Male	165	159	165	166	158	165	164	163	161	162
Female	98	101	101	103	108	111	111	107	123	128
Professor	80	80	81	85	79	82	87	83	88	91
Associate Professor	31	31	23	26	32	38	37	34	32	29
Assistant Professor	55	54	65	73	73	68	68	74	77	71
Instructor	97	95	91	84	82	88	83	78	87	99
Other	0	0	6	1	0	0	0	1	0	0
Doctoral	115	114	118	124	130	140	142	143	153	148
First Professional	4	4	6	6	3	5	6	9	1	2
Specialist	5	3	6	2	2	1	2	2	4	6
Master's	132	133	130	133	123	123	120	111	118	125
Bachelor's	7	6	6	4	8	7	5	5	8	8
Total	263	260	266	269	266	276	275	270	284	290
FTE Filled Positions*	178	174	168	176	183	193	194	198	203	

Source: Institutional Research
Date : March 2001

* Full-time Equivalent Filled Positions as reported in the IHL Analysis of Operating Budgets. Teaching faculty only. Does not include administrative, part-time, or professional non-faculty with faculty rank. As of June 2000, IHL no longer collects this data.

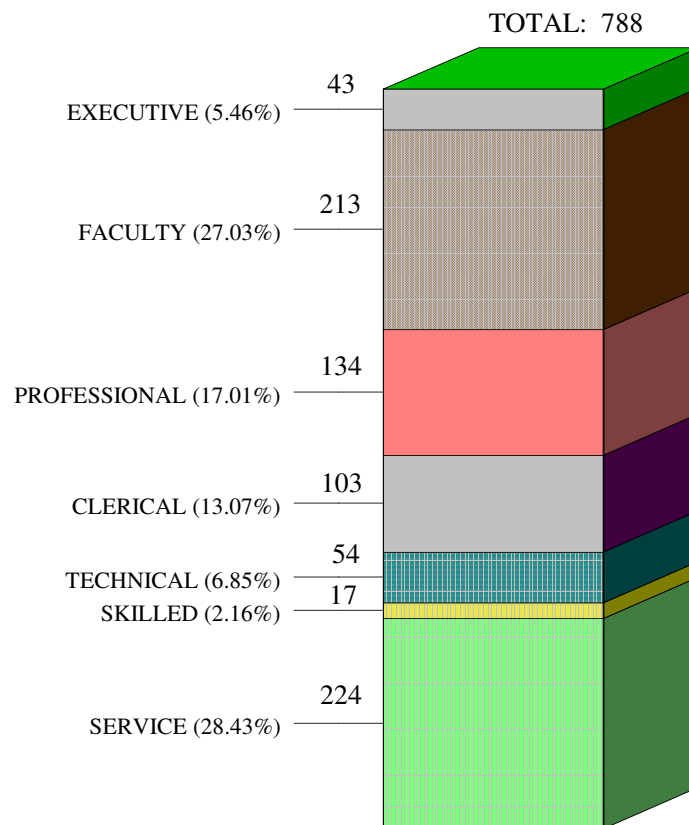
DELTA STATE UNIVERSITY
MEAN SALARIES OF FACULTY BY RANK
5-YEAR TREND

RANK	1996	1997	1998	1999	2000
Professor	\$49,242	\$51,303	\$52,122	\$55,603	\$55,173
Associate Professor	\$41,450	\$41,082	\$43,447	\$47,289	\$48,050
Assistant Professor	\$37,032	\$38,179	\$38,939	\$42,103	\$40,900
Instructor	\$31,286	\$32,896	\$34,185	\$37,018	\$36,347
ALL RANKS	\$41,582	\$43,219	\$44,117	\$46,829	\$46,210



Source: Institutional Research and Planning
Date : March 2001

DELTA STATE UNIVERSITY DISTRIBUTION OF EMPLOYEES * FALL 2000



Source: IHL Statistical Report
Date : December 2000

* Includes full-time and part-time.

DELTA STATE UNIVERSITY
TUITION & FEES: ANNUAL RATES
2000-01

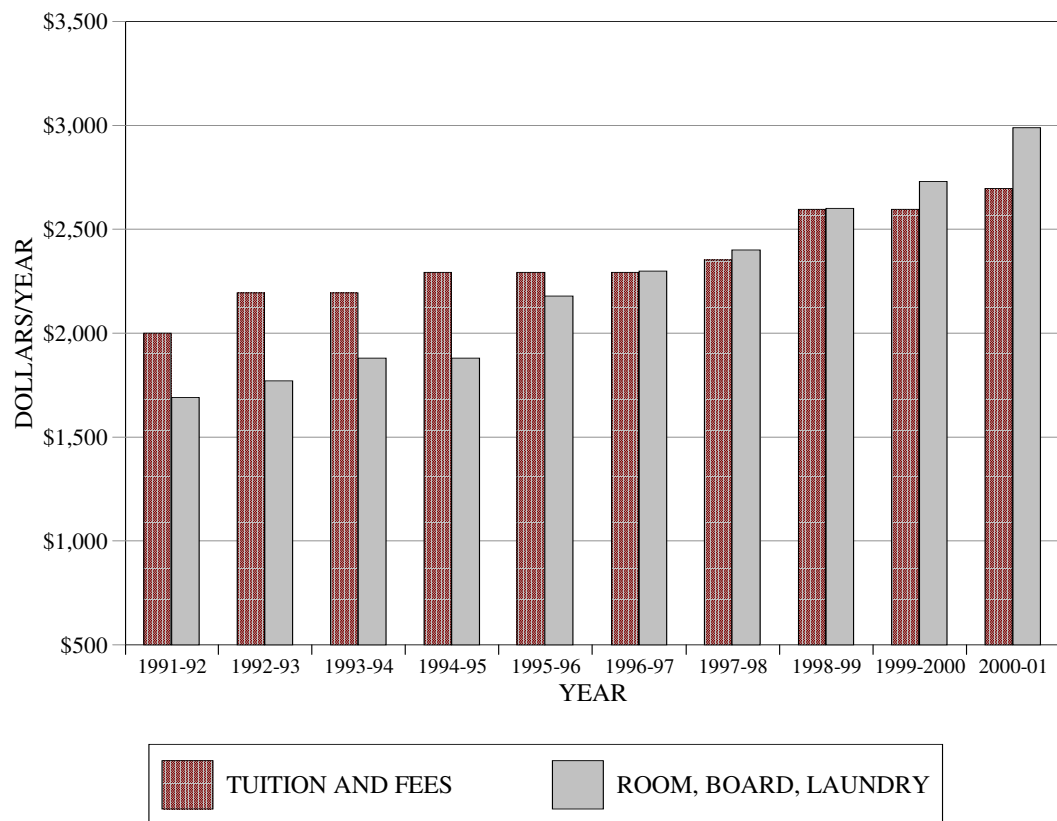
FULL-TIME STUDENTS	General Tuition	Athletic Fee	Union Fee	Technology Fee	Health Fee	Student Activity Fee	Room Rent Board & Laundry	Total
MS Res. - Dorm Student	\$2,154	\$200	\$45	\$40	\$51	\$206	\$2,990	\$5,686
MS Res. - Day Student	\$2,154	\$200	\$45	\$40	\$51	\$206	--	\$2,696
Nonres. - Dorm Student	\$5,870	\$200	\$45	\$40	\$51	\$206	\$2,990	\$9,402
Nonres. - Day Student	\$5,870	\$200	\$45	\$40	\$51	\$206	--	\$6,412

SPECIAL FEES

Private room per semester.....	\$450
Overload Fees:	
Undergraduate - for each hour over 19.....	\$95
Graduate - for each hour over 13.....	\$125
Correspondence course fee per semester hour.....	\$95
Private music lesson fee:	
For each semester hour credit.....	\$45
Transcript - after first.....	\$3
Late registration fee.....	\$10
Change of schedule (after registration).....	\$5
Lab Fee.....	\$5

Source: University Accounting
Date : June 2000

DELTA STATE UNIVERSITY **TUITION AND FEES*** **1991 - 2000**



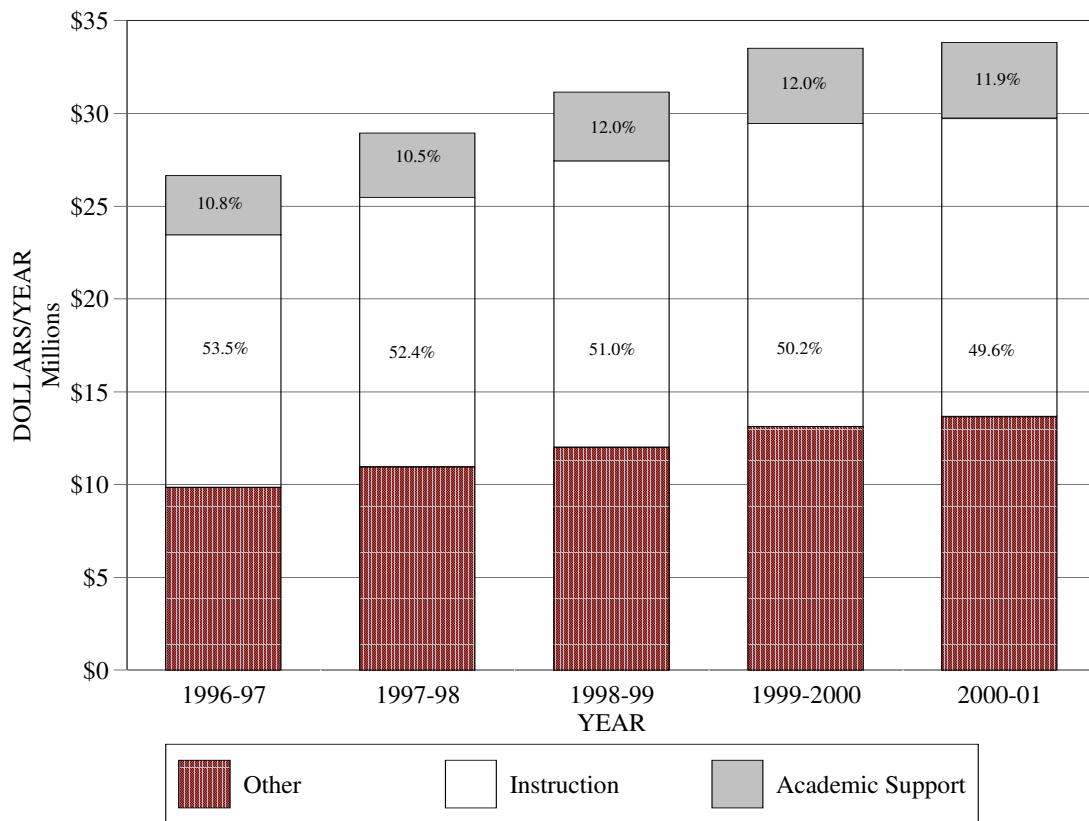
Source: University Accounting
 Date : June 2000

* Cost is for full-time MS resident students.

DELTA STATE UNIVERSITY
INSTRUCTION vs. TOTAL E&G
5-YEAR TREND: 1996 - 2000

	1996-97	1997-98	1998-99	1999-2000	2000-01
Total E&G	\$26,643,417	\$28,942,117	\$31,153,429	\$33,492,919	\$33,814,910
Instruction	\$13,599,963	\$14,526,482	\$15,447,805	\$16,333,257	\$16,062,842
Acad. Support	\$3,196,332	\$3,467,728	\$3,716,648	\$4,034,648	\$4,104,243

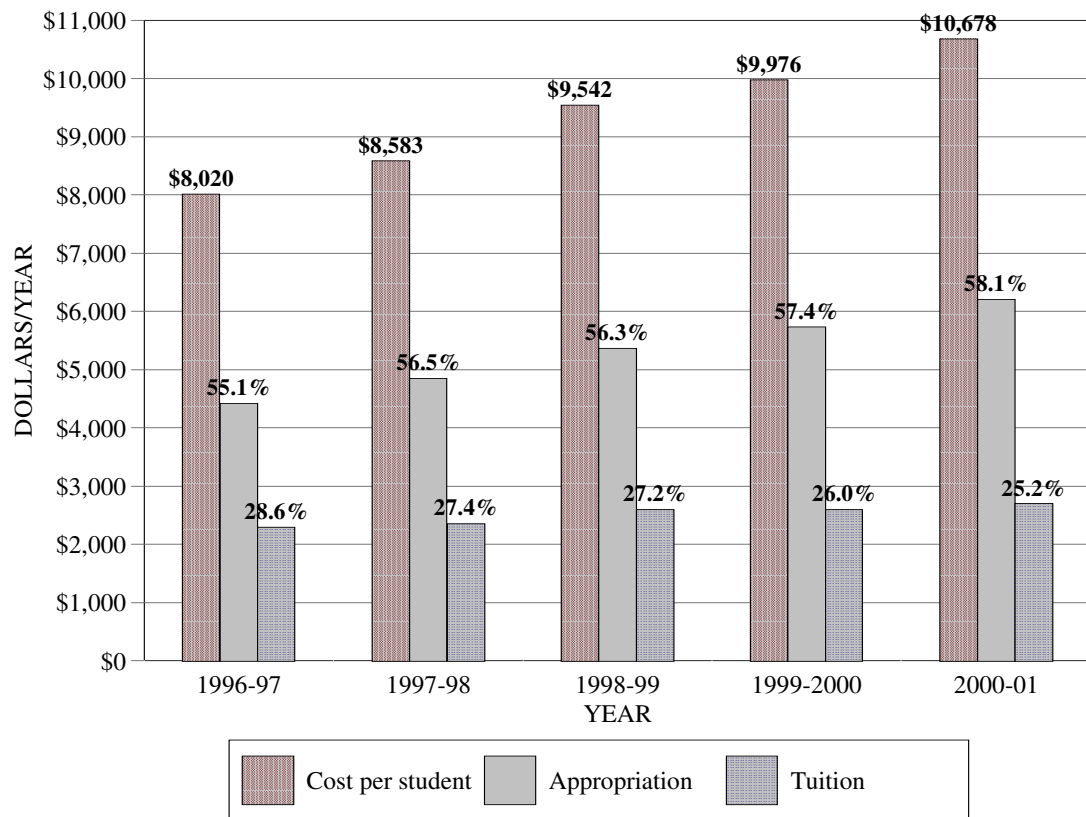
TOTAL EDUCATION AND GENERAL EXPENDITURES



Source: Institutional Research & Planning
Date : June 2000

DELTA STATE UNIVERSITY
COST PER STUDENT vs. TUITION AND APPROPRIATION *
5-YEAR TREND: 1996 - 2000

	1996-97	1997-98	1998-99	1999-2000	2000-01
Cost per student	\$8,020	\$8,583	\$9,542	\$9,976	\$10,678
State Appropriation	\$4,418	\$4,847	\$5,368	\$5,728	\$6,208
Tuition	\$2,294	\$2,354	\$2,596	\$2,596	\$2,696



Source: Institutional Research & Planning

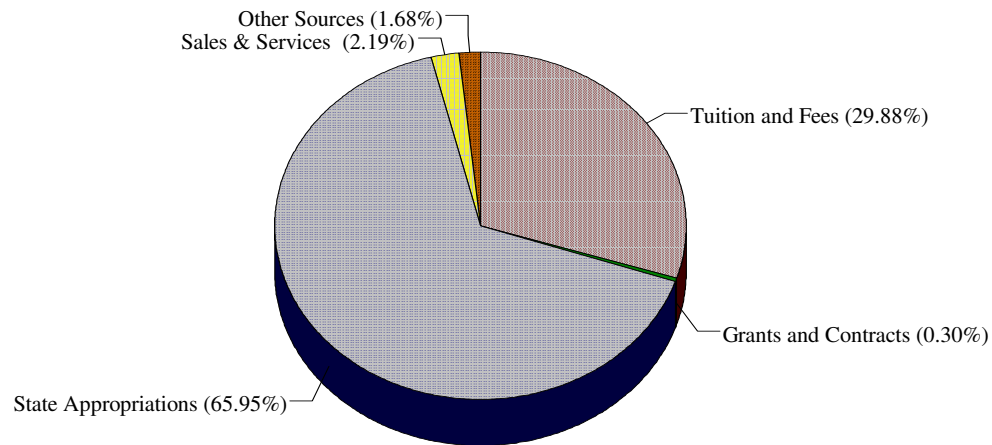
Date : January 2001

* Cost = Edu. & General Expense Per FTE Student

**DELTA STATE UNIVERSITY
CURRENT FUNDS REVENUES BY SOURCE
5-YEAR PROFILE**

FISCAL YEARS	1996-97	1997-98	1998-99	1999-2000	2000-01
Tuition and Fees	\$8,679,200	\$8,768,700	\$9,743,947	\$9,548,190	\$10,103,430
State Appropriations	16,748,728	18,958,896	20,119,582	22,547,263	22,300,291
Grants and Contracts	106,000	103,000	103,000	103,000	103,000
Sales & Services	626,150	623,150	623,150	750,450	741,073
Other Sources	483,339	488,371	563,750	544,016	567,116
Total E&G	\$26,643,417	\$28,942,117	\$31,153,429	\$33,492,919	\$33,814,910
Auxiliary Enterprises	6,326,867	6,396,046	6,858,822	7,054,384	7,730,147
TOTAL	\$32,970,284	\$35,338,163	\$38,012,251	\$40,547,303	\$41,545,057

2000-01 FUNDS REVENUES BY SOURCE

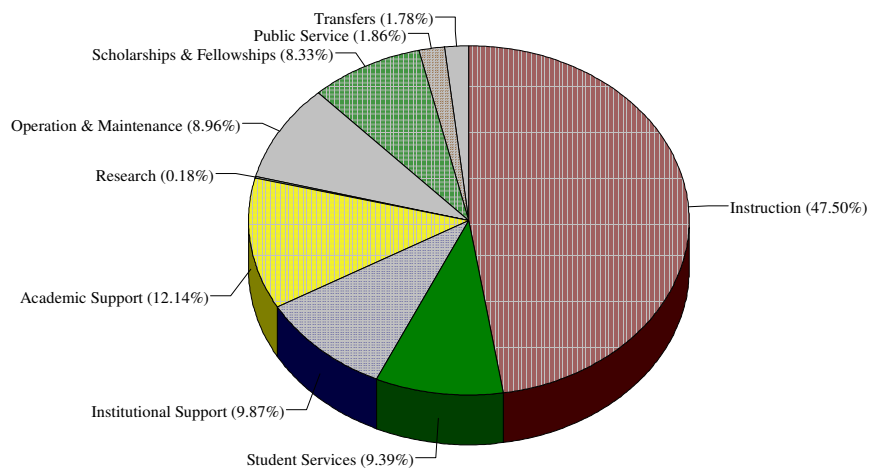


Source: IHL Analysis of Operating Budgets
Date : June 2000

DELTA STATE UNIVERSITY
CURRENT FUNDS EXPENDITURES AND TRANSFERS BY FUNCTION
5-YEAR PROFILE

FISCAL YEARS	1996-97	1997-98	1998-99	1999-2000	2000-01
Instruction	\$13,599,963	\$14,526,482	\$15,447,805	\$16,333,257	\$16,062,842
Research	219,878	128,237	73,792	81,124	61,412
Public Service	77,494	118,274	99,231	488,129	627,866
Academic Support	3,196,332	3,467,728	3,716,648	4,034,845	4,104,243
Student Services	2,653,501	2,837,371	2,903,428	3,107,305	3,174,246
Institutional Support	2,743,879	2,963,524	3,006,627	3,317,196	3,336,270
Operation & Maint.	2,371,686	2,932,133	3,030,301	3,031,361	3,030,617
Schol. & Fellowships	1,780,684	1,968,368	2,186,497	2,555,602	2,815,712
Transfers	0	0	689,100	544,100	601,702
Total Ed. & General	26,643,417	28,942,117	31,153,429	33,492,919	33,814,910
Auxiliary Enterprises	6,326,867	6,396,046	6,858,822	7,054,384	7,730,147
TOTAL	\$32,970,284	\$35,338,163	\$38,012,251	\$40,547,303	\$41,545,057

2000-01 FUNDS EXPENDITURES AND TRANSFERS BY FUNCTION



Source: IHL Analysis of Operating Budgets
Date : June 2000

DELTA STATE UNIVERSITY
W.B. ROBERTS LIBRARY COLLECTIONS AND UTILIZATIONS
1995 - 1999

FISCAL YEAR	1995-96	1996-97	1997-98	1998-99	1999-2000
LIBRARY COLLECTIONS					
Bound Volumes	215,539	214,489	287,693	295,694	312,631
Microforms	756,561	774,169	736,071	733,383	754,713
U. S. Government Documents*	111,281	117,420	-	-	-
Serial Subscriptions	1,215	1,194	1,337	1,368	1,365
Graphic Materials**	1,762	2,661	-	-	-
Audio Materials**	11,590	11,412	-	-	-
Film and Video Materials**	3,934	1,827	-	-	-
Audio Visual	-	-	15,523	14,718	15,470
Other Materials***	20,563	10,151	-	-	-
INTERLIBRARY LOAN					
Provided to Other Libraries	1,871	1,851	1,869	1,953	1,869
Received from Other Libraries	2,619	2,384	1,863	1,206	485
CIRCULATION TRANSACTIONS					
General Collection	53,128	55,510	44,734	40,202	34,643
Reserve Collection	7,563	7,833	7,227	5,792	4,548

1997-98 IPEDS Changes:

Source: W. B. Roberts Library

* Reported as a component of Bound Volumes

Date : November 2000

** Reported as a component of Audio Visual

*** Not reported