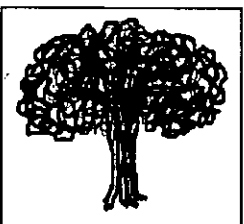
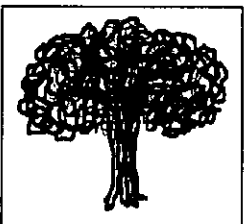
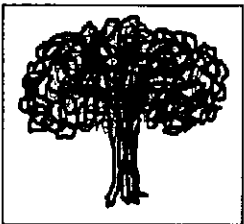
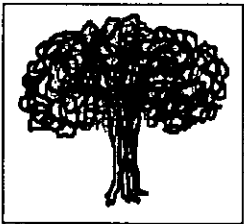
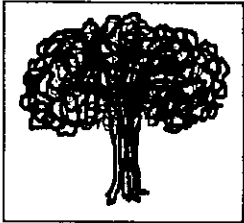
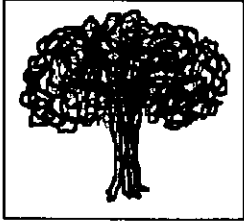


*DELTA STATE UNIVERSITY  
FACTBOOK 1991*



## FOREWORD

The Delta State University Factbook is an annual publication that provides a ready source of information to answer questions frequently asked about the University. This edition contains a statistical overview of operations for the 1990-91 academic year. Included is information, both past and present, concerning enrollment, student characteristics, faculty characteristics, income, and expenditures. Its primary purpose is to promote understanding for those seeking information about Delta State University.

Most of the information in this edition was obtained from statistical reports published by the Board of Trustees of Mississippi Institutions of Higher Learning. The data submitted to the Board of Trustees for this report represents not only the work of the Office of Institutional Research & Planning but of various administrative offices such as the Office of the Registrar, Admissions, Personnel, Academic Affairs, Financial Affairs, Student Affairs, Data Processing, and the Library. Without their continued assistance and cooperation, this publication would not be possible. We extend to them our sincere appreciation.

The Office of Institutional Research and Planning, in its on-going effort to provide timely management information, encourages your comments and suggestions for improvement. We hope you find this 1991 edition of the Factbook both informative and useful.

Charlett Hollomon, Factbook Editor  
Richard S. Myers, Director  
Office of Institutional Research and Planning  
Kethley 202  
Delta State University  
Cleveland, MS 38733

# DELTA STATE UNIVERSITY

## FACTBOOK

### TABLE OF CONTENTS

Foreword	i
<b>Administration &amp; Board of Trustees</b>	<b>1</b>
Institutional Mission	2
University Goals	4
On-Campus Enrollment Summary by Semester 1990-1991	6
On-Campus Enrollment Summary of Students by Level	7
On-Campus Enrollment Full-time/Part-time - Fall, 1990	8
On-Campus Enrollment by Race - Fall, 1990	9
On-Campus Enrollment by Sex - Fall, 1990	10
On-Campus Enrollment by Level - Fall, 1990	11
On-Campus Enrollment Resident/Nonresident - Fall, 1990	12
On-Campus Enrollment by School - Fall, 1990	13
On-Campus Enrollment Summary 1981-1990	14
On-Campus Headcount Enrollment 1981-1990	15
Undergraduate Enrollment by Race 1981-1990	16
On-Campus Enrollment by County - Fall, 1990	17
On-Campus Enrollment by Counties - 1985-1990	18
Enrollment of New Full-Time Transfer Students - 1987-1990	20
Enrollment of New Full-Time Transfer Students from Mississippi Public Community Colleges	20

Enrollment: Actual and Projected	21
Enrollment Summary of Students by Age - Fall, 1990	22
Enrollment Summary of Students by Race - Fall, 1990	22
Undergraduate Majors by Sex and Minority Status - Fall, 1990	23
Distribution of Enhanced ACT Scores	25
Distribution of ACT & SAT Conversions & Enhanced ACT	26
Freshmen Retention Rates	27
Comparative Room Report - Men's & Women's Residence Halls	28
Semester Credit Hour Production by Level 1987-1990	29
Semester Credit Hour Production by Department - 1990-1991	30
Degrees Conferred by CIP Category 1986-1991	31
Academic Program Inventory	32
Average of Grades Awarded by Course Type - Fall, 1990	34
Tuition and Fees Annual Rates 1990-1991	36
Tuition and Fees 1981-1990	37
Current Fund Revenues & Expenditures 1990-1991	38
Administrative and Academic Organizations	39
Faculty Characteristics 1981-1990	40
W. B. Roberts Library Collections and Utilization 1981-1990	41
President's Annual Report	42

---

 DELTA STATE UNIVERSITY

 Administration
 

---

Dr. Kent Wyatt, President

 Dr. Frank McArthur, Vice President for  
**Academic Affairs**

Dr. Robert Nettles, Business Manager

 Dr. Wayne Blansett, Dean of Student  
 Affairs

 Dr. Mike Robbins, Executive Assistant to  
 the President

Dr. James Jordan, Director of Athletics

 Dr. E. E. Caston, Dean of the School of  
 Education

 Dr. W. F. LaForge, Dean of the School of  
 Arts and Sciences

 Dr. Roy Moore, Dean of the School of  
 Business

 Dr. Barbara Powell, Dean of the School of  
 Nursing

 Dr. Ross Story, Dean of Continuing  
 Education

 Dr. John Thornell, Dean of Graduate  
 Studies and Research
 

---

## INSTITUTIONS OF HIGHER LEARNING

 Board of Trustees
 

---

 Mr. Will Hickman,  
 President, Oxford

 Mr. Bryce Griffis  
 Starkville

 Dr. Joe Haynes  
 Jackson

 Mr. William Jones  
 Jackson

 Ms. Dianne Walton  
 Meridian

 Mr. Frank O. Crosthwait,  
 Jr.  
 Indianola

 Ms. Diane Miller  
 Gulfport

 Mr. Sidney Rushing  
 Gulfport

 Ms. Nan McGahey Baker,  
 Winona

 Mr. Marlin Ivey  
 Kosciusko

 Mr. James Luvenc  
 Holly Springs

 Dr. Cass Pennington  
 Indianola

 Dr. W. Ray Cleere, Commissioner of Higher Education  
 3825 Ridgewood Road  
 Jackson, MS 39211-6453  
 (601) 982-6611

# DELTA STATE UNIVERSITY

## INSTITUTIONAL MISSION

### HISTORY OF THE UNIVERSITY

Delta State Teachers College was created by the Mississippi Legislature in 1924 with the following purpose: "to qualify teachers for the public schools of this state, by imparting instruction in the art and practice of teaching in all branches of study which pertain to common school education, and other such studies as the Board of Trustees may from time to time prescribe." Over the years changes in institutional purpose, reflected through increasing enrollment, expanded curriculum, and additional degree offerings resulted in name changes to Delta State College in 1955 and to Delta State University in 1974.

### DESCRIPTION OF THE UNIVERSITY

Delta State is a public institution, receiving primary funding from the state; however, it also seeks and receives support from private and federal sources, as well as tuition revenue. The University provides a comprehensive undergraduate curriculum, offering 14 baccalaureate degrees in 44 majors. It also seeks to meet the need for advanced training in certain fields by providing programs of study for four master's degrees, the Educational Specialist degree, and the Doctor of Education degree.

Serving as the cultural and educational center of the region, Delta State University is located in Cleveland. The Mississippi Delta, a twenty-county, northwestern region, which is rich in various ethnic and cultural groups, provides approximately 80 percent of the University's enrollment. Between 10 and 15 percent of the students attend from other parts of the state, while slightly under 10 percent of the students reside outside the state. Accordingly, the University identifies the Delta as its primary public service region, while acknowledging the importance of research and service that will also benefit the state and nation.

### PHILOSOPHY AND VALUES

The philosophy of Delta State is best expressed by its commitment to provide educational and cultural experiences designed to enhance and fulfill the potential of all persons without regard to race, religion, national origin, sex, or age. Furthermore, as students have diverse goals, backgrounds, and limitations on their finances, time, and mobility, the University, through its programs and support services, provides a variety of activities and growth opportunities. At the heart of its curriculum, the University provides an undergraduate education in the arts and sciences, business, education, and nursing. Graduate study in education and business and continuing education programs in a variety of areas also prepare the student for leadership roles. A comprehensive student affairs program is designed to support the academic structure of the University.

### DESCRIPTION OF STUDENTS

Delta State offers these educational experiences to a student body from a broad range of cultural, socio-economic, and racial backgrounds. Twenty percent of the students belong to racial minority groups. Approximately 75 percent of its students, relatively balanced numerically by

gender, attend the institution full-time, with 40 percent living in University housing. While many of its students come from middle socio-economic levels, the institution is committed to providing access and support for qualified students from all backgrounds. The numbers of students pursuing degrees in the Schools of Arts and Sciences, Business, and Education are comparable, with smaller numbers in the School of Nursing and in various pre-professional areas.

### FUNCTIONS OF THE UNIVERSITY

**The University provides an atmosphere conducive to intellectual, cultural, spiritual, moral, physical, and social development.** While placing emphasis on the high quality of its instructional program, Delta State recognizes the close connection between instruction and scholarly research. To achieve its goals, the University retains an outstanding faculty, dedicated to teaching, creative scholarly activity, and public service. In each of these areas, the institution provides the necessary educational support, physical resources, and administrative services to create a community of scholars in which knowledge is both shared and generated.

### SKILLS AND ATTITUDES ACQUIRED BY STUDENTS

The primary "product" of Delta State is its undergraduate student. The University provides a program in general, undergraduate education, emphasizing cultural development, communication, and computation, along with an understanding - both appreciative and critical - of human achievement. As a result, students develop the ability to understand and evaluate the thoughts of others and to express their own thoughts effectively. From their major discipline, students gain a depth of understanding in one or more fields of learning, including the techniques of research and performance identified with those fields. The University also strives to provide for students the opportunity to develop human relations skills through participation in extra-curricular activities and involvement with student organizations. Finally, graduates are encouraged to maintain close ties with the University as they make contributions to society whether through employment or advanced study.

### DELTA STATE UNIVERSITY

In response to the needs of students, Delta State University is large enough to offer a wide range of high-quality programs and, at the same time, small enough to provide a friendly environment, limited-enrollment classes, and opportunity for significant student - faculty interactions. Delta State takes pride in its past and its present, but its future holds virtually unlimited promise: the quality of life in the Mississippi Delta will be crucially linked with the University's commitment to excellence in instruction, in research, and in public service.

# DELTA STATE UNIVERSITY

## UNIVERSITY GOALS

Delta State University strives to fulfill the following goals:

### The Curriculum

1. Define the general education requirements to ensure that courses adequately address basic skills, knowledge, and competencies desirable for effectively pursuing careers, citizenship, and a richer personal life.
2. Provide opportunities throughout the curriculum for students to further develop their skills in writing and in critical thinking.
3. Improve computer literacy for all students by making computer services available and by facilitating the use of appropriate software packages in courses throughout the curriculum.
4. Provide a curriculum that ensures that majors are properly prepared in their chosen fields to complete licensure requirements, enter the work force, and continue advanced study in graduate or professional school.
5. Enhance educational experiences at all levels by providing student internships and other career development opportunities and by encouraging student research and other creative work.
6. Maintain a strong graduate program which provides opportunities for advanced study and research in selected fields.
7. Provide the resources and assistance to support the disciplines, including modern instructional equipment, a strong library and media center, computer facilities, and other services required for instruction, research, and public service.
8. Establish and maintain performance standards in all areas, with regular assessment of all programs, using indicators such as examination results, achievements of graduates, student and alumni opinion, and professional peer review.

### The Students

9. Recruit students who can meet performance standards and contribute to the academic excellence of the University.
10. Increase student retention by providing a support program with the following attributes: a comprehensive system of advising and other services to enhance student development; increased financial support to students through scholarships, assistantships, grants, and loans; a developmental studies program for underprepared students in mathematics, English, reading, and study skills; opportunities to meet or communicate with prospective employers or admission personnel from graduate or professional school.



11. Provide a rich campus life with a variety of cultural and extracurricular activities and other opportunities for personal development; provide through comprehensive intramural and athletic programs the opportunities to participate in recreational and intercollegiate sports.

#### **The Faculty**

12. Attract and maintain a highly qualified and creative faculty skilled in teaching, service, research, and other scholarly activity.
13. Provide sufficient faculty in all disciplines to maintain a student-teacher ratio that ensures opportunities for meaningful intellectual interaction between students and faculty.
14. Strengthen the faculty in their pursuit of scholarship in teaching, service, and research through a comprehensive program of faculty development and renewal, including appropriate support services, resources, and personnel.

#### **The Environment**

15. Maintain a climate of involvement in which faculty, staff, students, and administrators work together to provide the optimal environment for living and learning.
16. Provide the facilities and the physical environment which contribute to the intellectual, cultural, moral, physical, and social growth and development of the student and of the surrounding community.
17. Provide administrative services and auxiliary enterprises which are effective and efficient in the support of the institutional mission.
18. Expand the pursuit of external funding for instruction, research, student financial aid, and other needs.
19. Increase the involvement of alumni in the life and support of the University.
20. Accommodate non-traditional students and the general public by offering a comprehensive program of continuing education, including off-campus classes, independent-study courses by correspondence, non-credit courses, conferences, and workshops.
21. Strengthen the cooperative relationships with business and industry, service organizations, and other institutions.

**Recommended by the Long-Range Planning Committee**

**Approved by the President  
May 15, 1990**

# DELTA STATE UNIVERSITY

## ON-CAMPUS ENROLLMENT SUMMARY BY SEMESTER

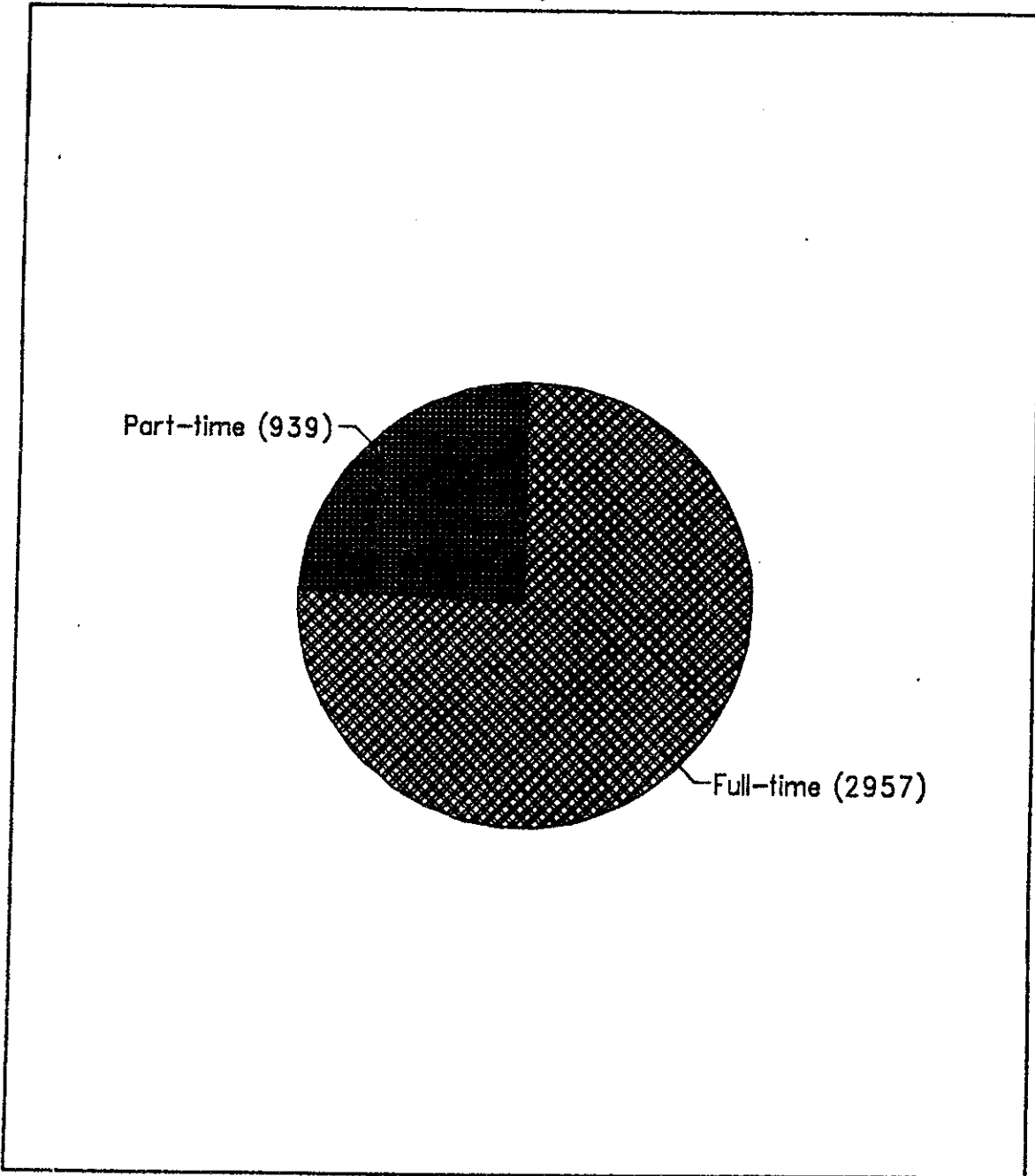
	SUMMER 90	FALL 90	SPRING 91
<b>RACE</b>			
WHITE	1306	3034	2732
BLACK	537	837	816
OTHER	19	25	28
total	1862	3896	3576
<b>SEX</b>			
FEMALE	1247	2303	2139
MALE	615	1593	1437
total	1862	3896	3576
<b>LEVEL</b>			
LOWER	315	1385	1158
UPPER	960	1945	1891
GRADUATE	587	566	527
total	1862	3896	3576
<b>RESIDENCY</b>			
RESIDENT OF MS	1780	3678	3371
NONRESIDENT OF MS	82	218	205
total	1862	3896	3576
<b>SCHOOL</b>			
ARTS & SCIENCES	477	1045	995
BUSINESS	527	1246	1180
EDUCATION	563	868	847
NURSING	35	126	108
UNDECLARED	260	611	446
total	1862	3896	3576

# DELTA STATE UNIVERSITY

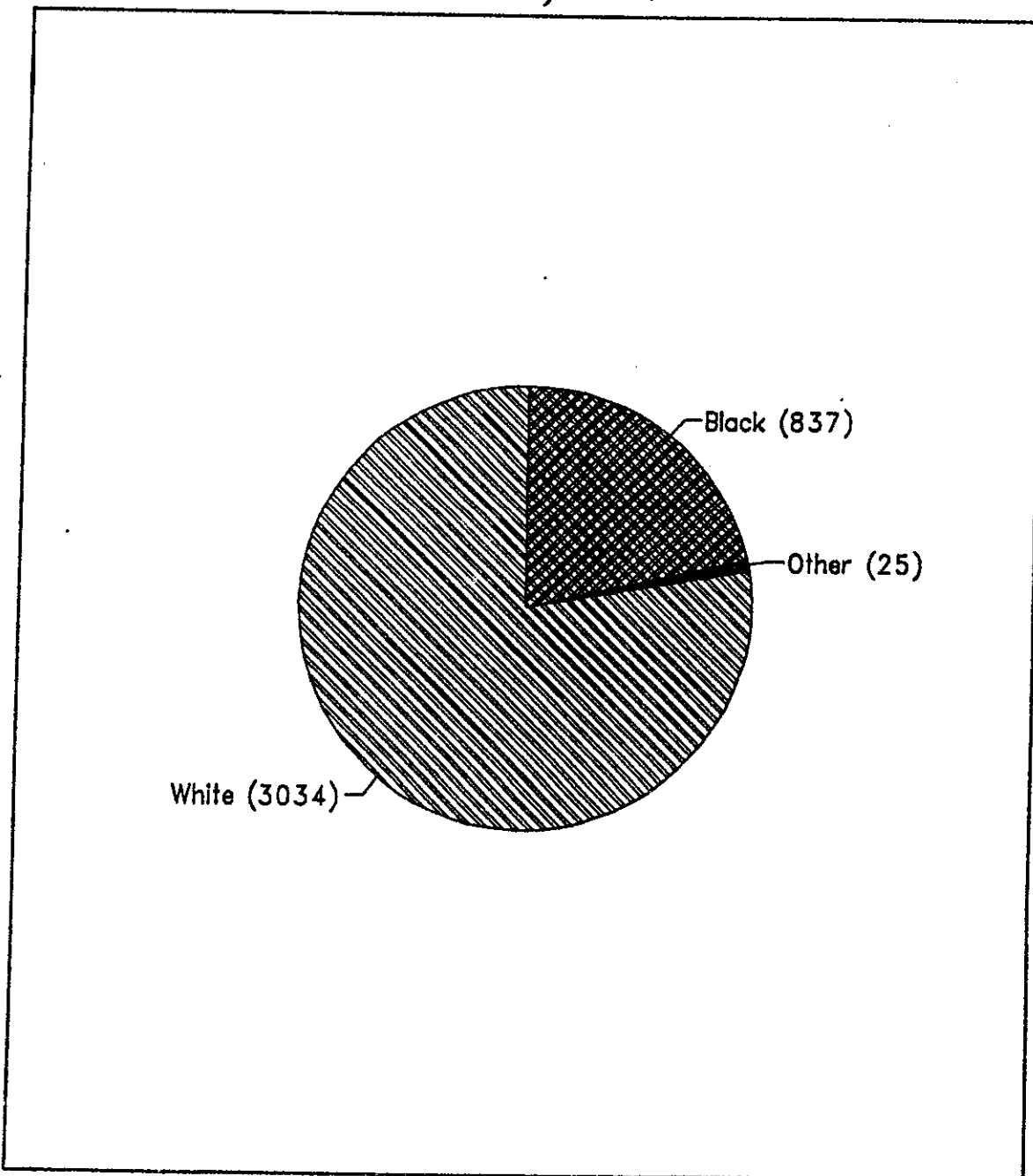
## ON-CAMPUS ENROLLMENT SUMMARY OF STUDENTS BY LEVEL

	Freshmen	Sophomores	Juniors	Seniors	Graduate	Total
<b>FALL 1990</b>						
Full-time	654	552	776	842	133	2957
Part-time	119	60	66	261	433	939
Total Enrollment	773	612	842	1103	566	3896
<b>FALL 1989</b>						
Full-time	601	563	719	798	124	2805
Part-time	113	59	49	254	409	884
Total Enrollment	714	622	768	1052	533	3689
<b>FALL 1988</b>						
Full-time	629	529	690	718	158	2724
Part-time	93	54	61	234	465	907
Total Enrollment	722	583	751	952	623	3631

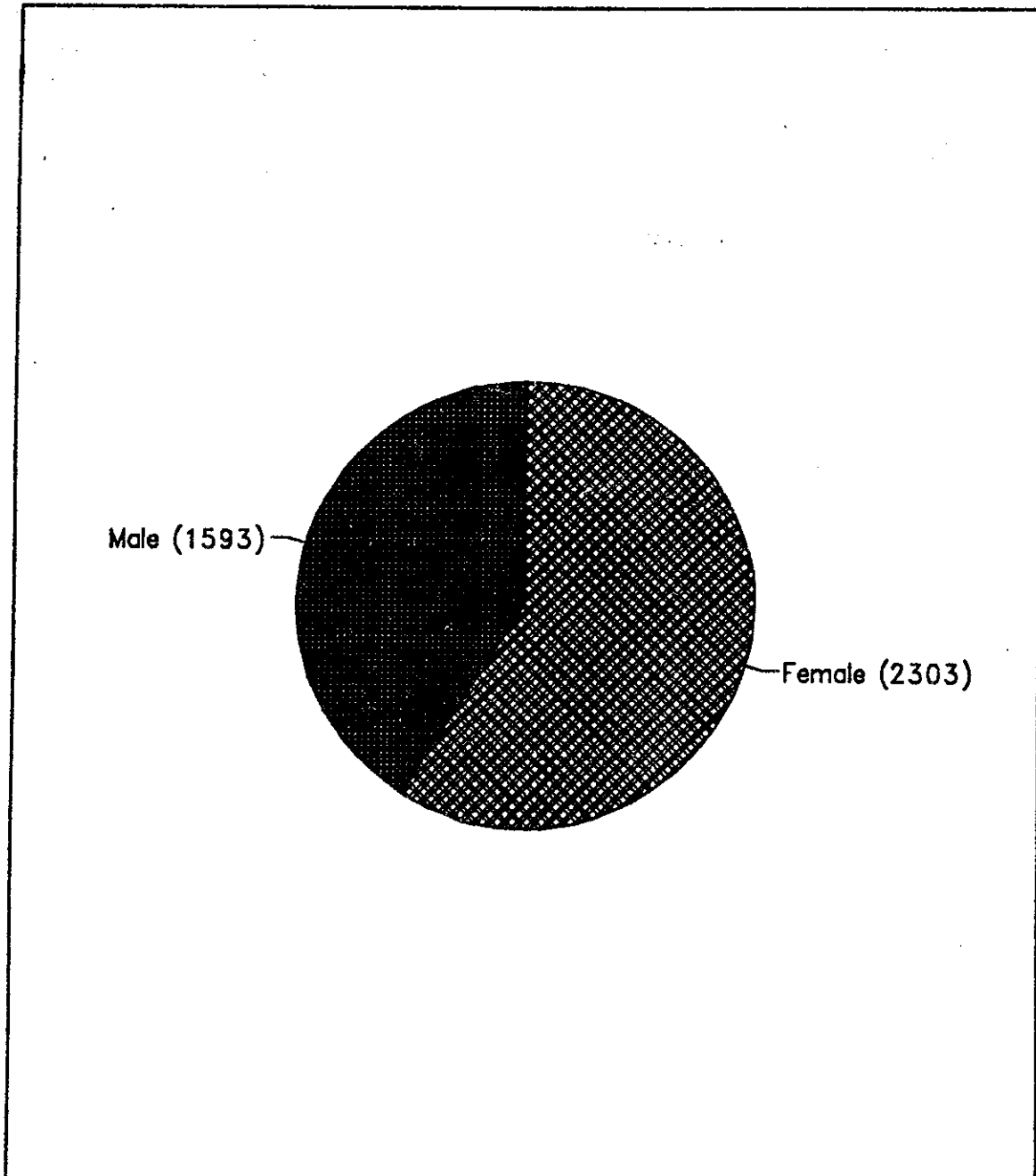
# DELTA STATE UNIVERSITY ON-CAMPUS ENROLLMENT FULL-TIME/PART-TIME FALL, 1990



# DELTA STATE UNIVERSITY ON-CAMPUS ENROLLMENT BY RACE FALL, 1990



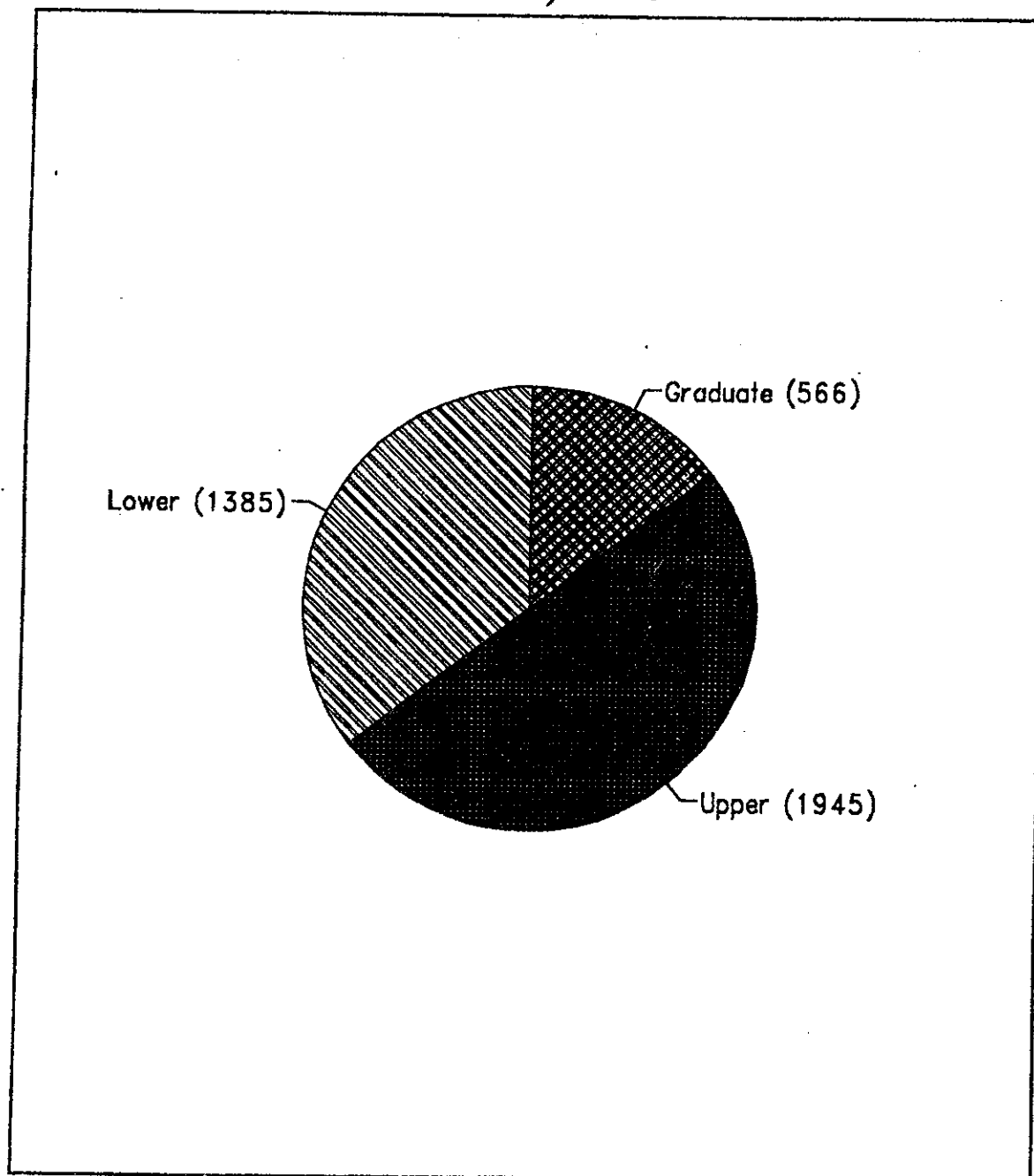
# DELTA STATE UNIVERSITY ON-CAMPUS ENROLLMENT BY SEX FALL, 1990



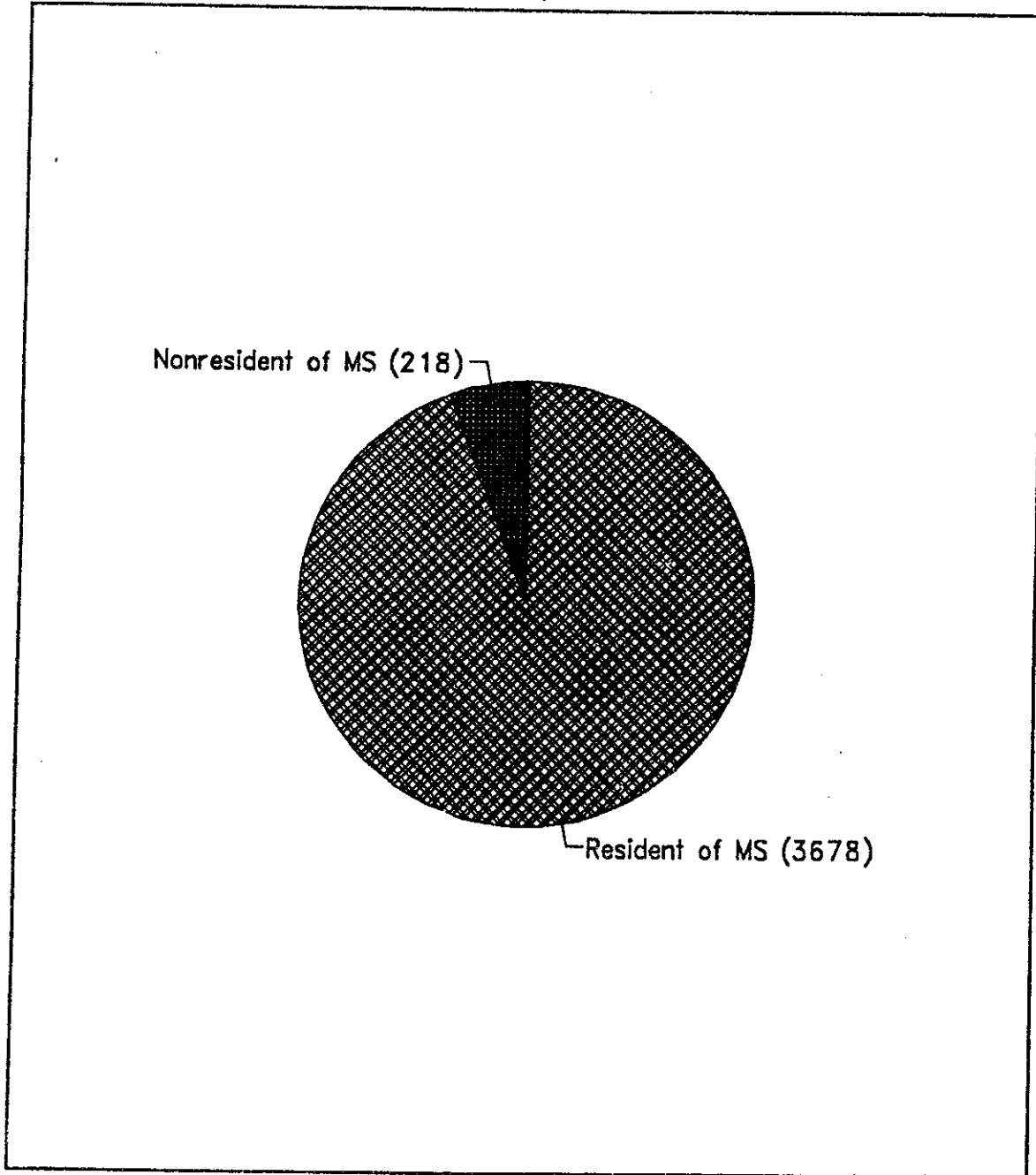
# DELTA STATE UNIVERSITY

## ON-CAMPUS ENROLLMENT BY LEVEL

### FALL, 1990

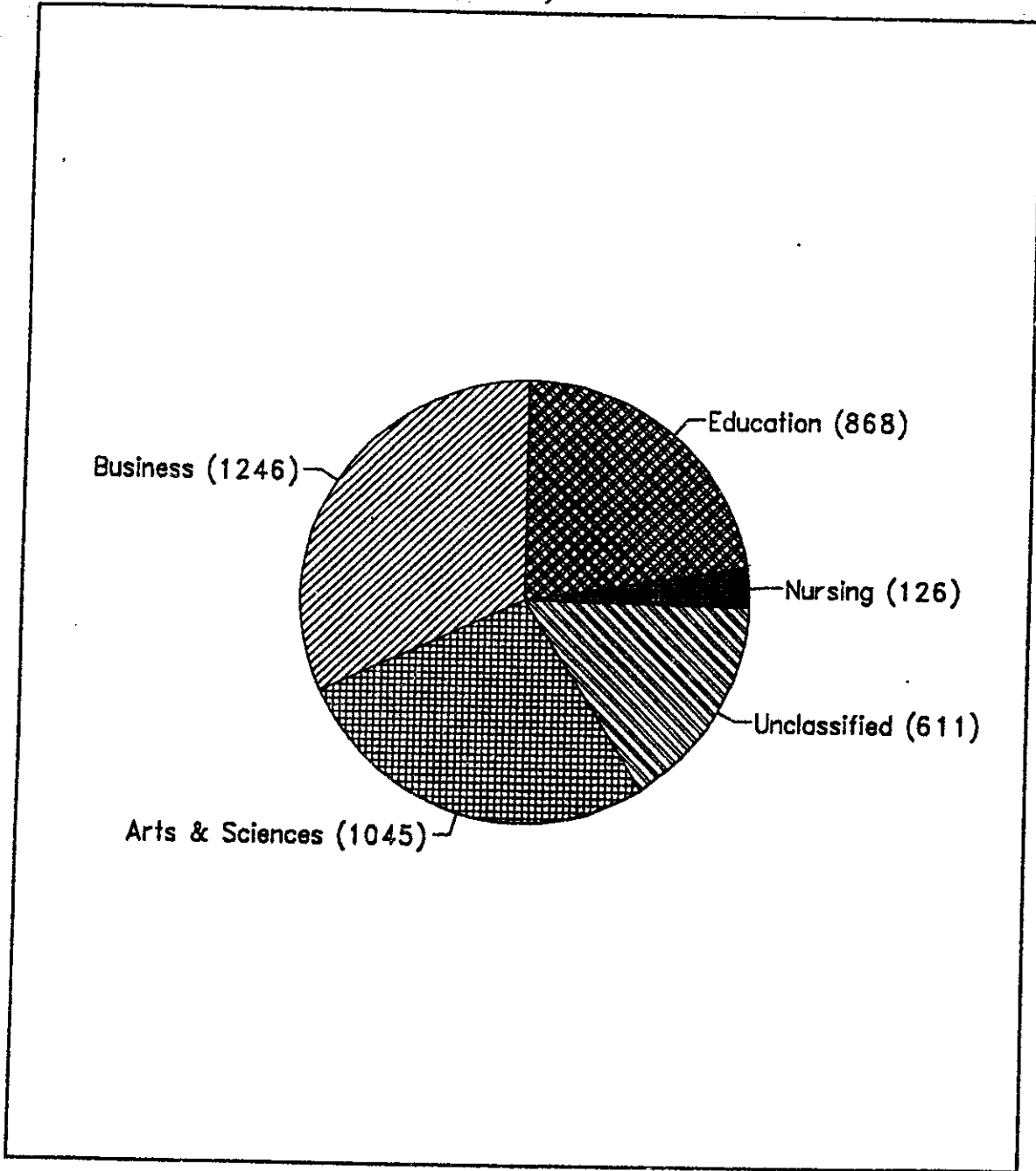


# DELTA STATE UNIVERSITY ON-CAMPUS ENROLLMENT RESIDENT/NONRESIDENT FALL, 1990





# DELTA STATE UNIVERSITY ON-CAMPUS ENROLLMENT BY SCHOOL FALL, 1990



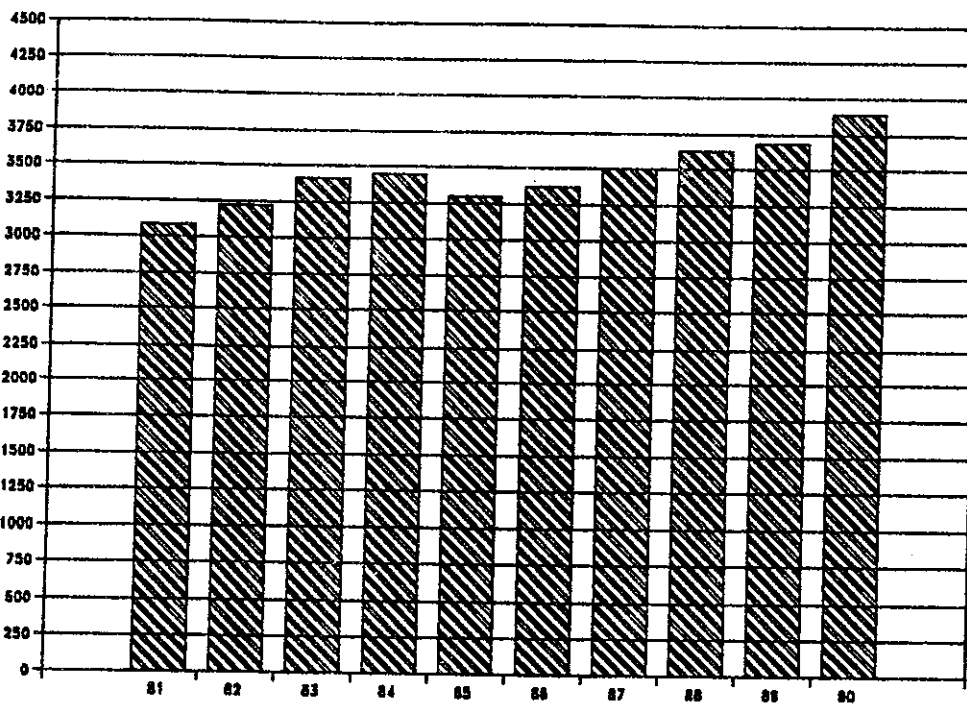
# DELTA STATE UNIVERSITY

## ON-CAMPUS ENROLLMENT SUMMARY

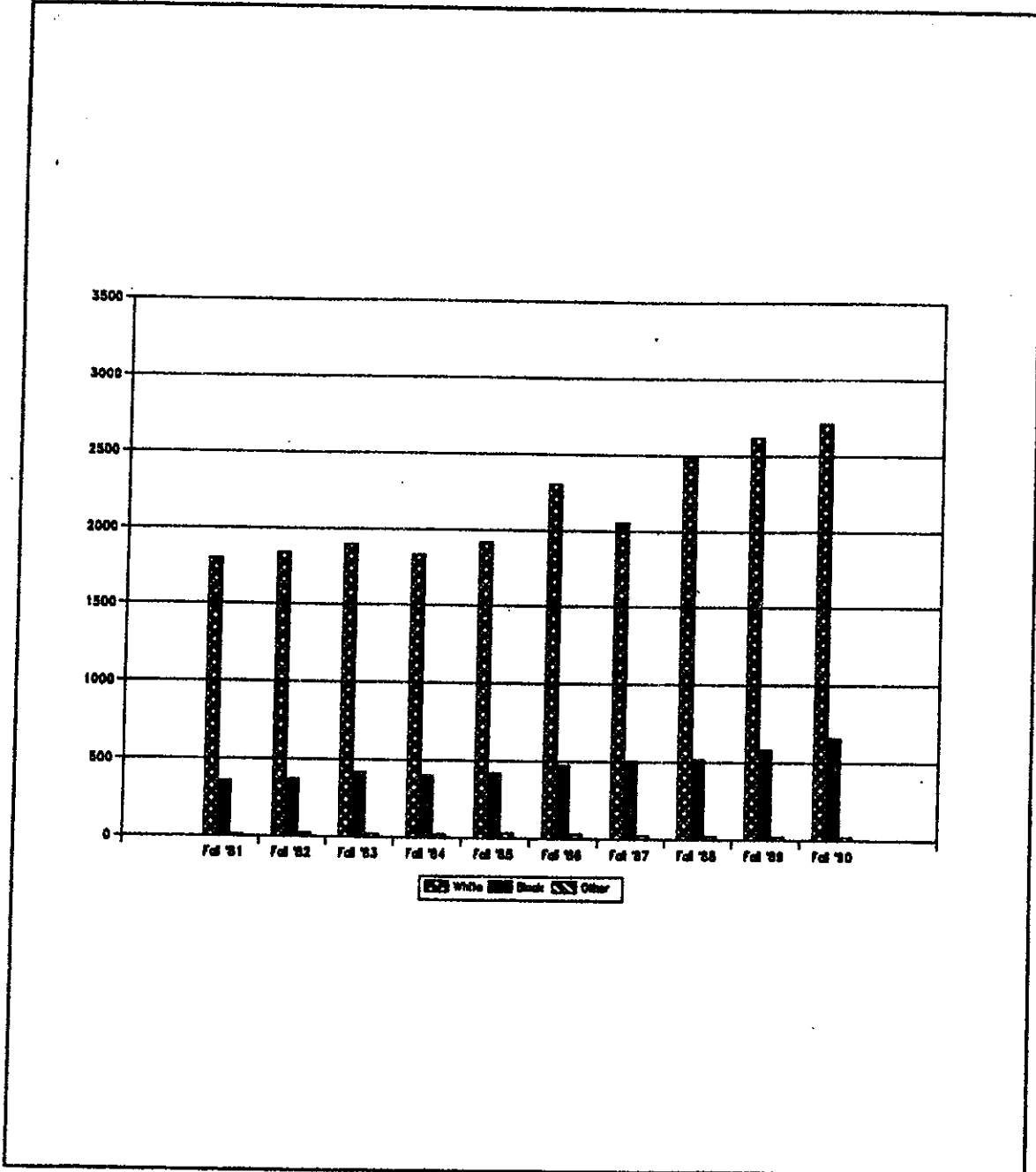
	SCHOOL YEAR	SCHOOL YEAR	SCHOOL YEAR	SCHOOL YEAR	SCHOOL YEAR	SCHOOL YEAR	SCHOOL YEAR	SCHOOL YEAR	SCHOOL YEAR	SCHOOL YEAR
HEADCOUNT	81-82	82-83	83-84	84-85	85-86	86-87	87-88	88-89	89-90	90-91
HEADCOUNT - FULLTIME	2288	2366	2453	2533	2404*	2441	2577	2724	2805	2957
HEADCOUNT - PARTTIME	796	856	962	912	890	931	925	907	884	939
HEADCOUNT - TOTAL	3084	3222	3415	3445	3294	3372	3502	3631	3689	3896
HEADCOUNT - FRESHMAN	567	750	816	689	704	702	731	722	714	773
HEADCOUNT - SOPHOMORE	595	528	584	565	485	503	551	583	622	612
HEADCOUNT - JUNIOR	729	682	681	768	721	639	662	751	768	842
HEADCOUNT - SENIOR	747	815	956	997	957	962	926	952	1052	1103
HEADCOUNT-TOTAL UNDERGRAD	2638	2775	3037	3019	2867	2806	2870	3008	3156	3330
HEADCOUNT-TOTAL GRADUATE	446	447	378	426	427	566	632	623	533	566
HEADCOUNT - MALE	1280	1317	1410	1448	1446	1486	1526	1477	1537	1593
HEADCOUNT - FEMALE	1804	1905	2005	1997	1848	1886	1976	2154	2152	2303
HEADCOUNT - RESIDENT	2931	3051	3197	3222	3135	3091	3256	3404	3477	3678
HEADCOUNT - NONRESIDENT	153	171	218	223	159	281	246	227	212	218
FTE										
FTE - LOWER	1063	1143	1234	1134	1053	1135	1218	1233	1238	1263
FTE - UPPER	1286	1307	1383	1501	1374	1449	1450	1555	1668	1786
FTE - GRADUATE	255	251	224	257	200	258	283	287	237	254
FTE - TOTAL	2604	2701	2841	2892	2627	2842	2951	3075	3143	3303

Source: EE Statistical Report  
 \* Indicates correction to previously published data.

# DELTA STATE UNIVERSITY ON-CAMPUS HEADCOUNT ENROLLMENT 1981 - 1990

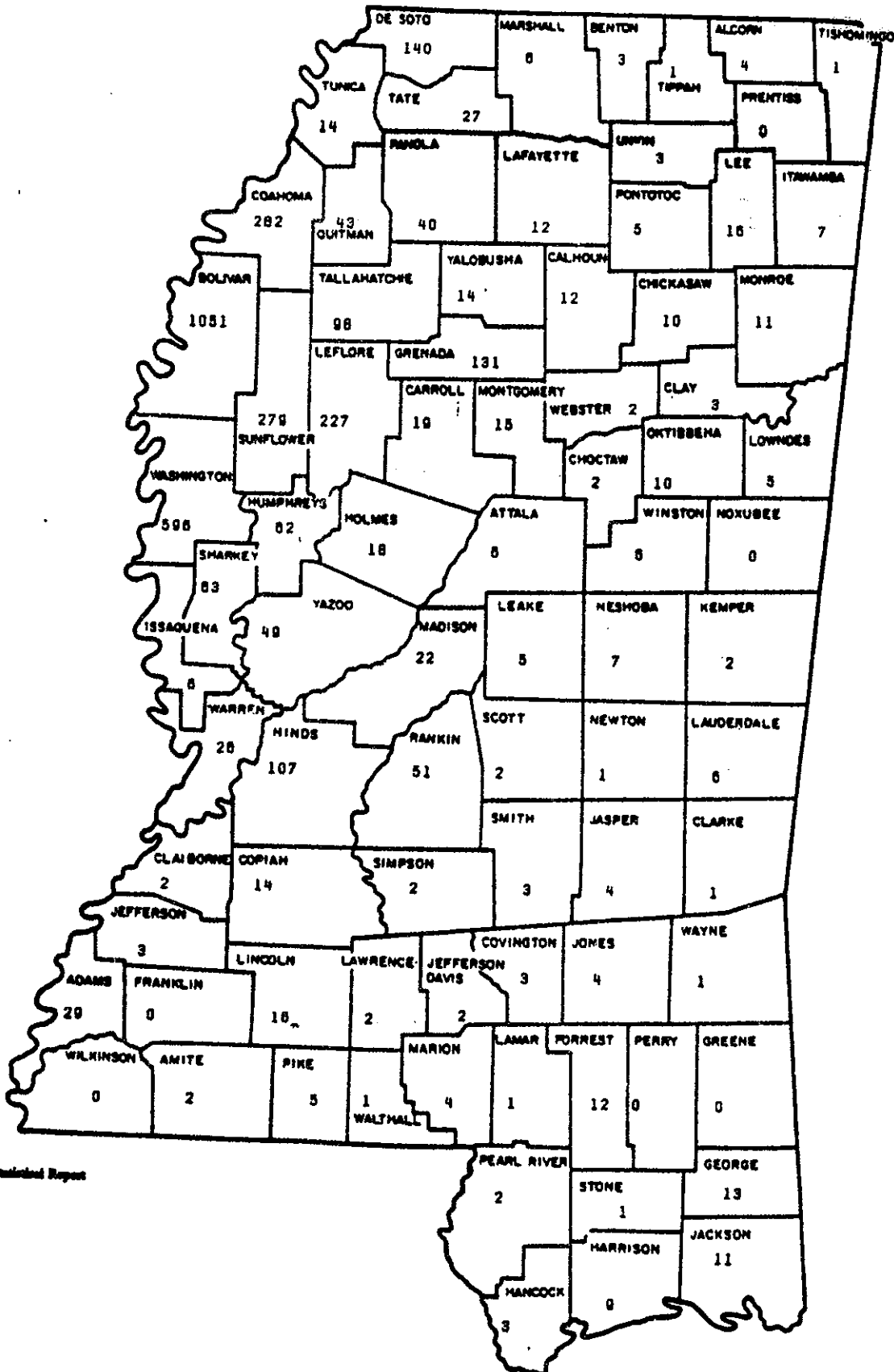


# DELTA STATE UNIVERSITY UNDERGRADUATE ENROLLMENT 1981 - 1990



Source: IPEDS & HIGIS Statistical Reports

# DELTA STATE UNIVERSITY ON-CAMPUS ENROLLMENT BY COUNTY FALL, 1990



Source: DHE Statistical Report

# DELTA STATE UNIVERSITY

## ON-CAMPUS ENROLLMENT BY COUNTIES

COUNTY	FALL 1985	FALL 1986	FALL 1987	FALL 1988	FALL 1989	FALL 1990
ADAMS	22	20	24	20	28	29
ALCORN	10	11	8	9	4	4
AMITE	0	2	2	3	3	2
ATTALA	3	7	11	8	8	6
BENTON	6	6	1	2	3	3
BOLIVAR	907	947	1011	1043	1052	1051
CALHOUN	10	9	6	16	12	12
CARROLL	6	13	11	13	19	19
CHICKASAW	10	13	15	13	8	10
CHOCTAW	3	0	0	1	1	2
CLAIBORNE	7	8	6	5	4	2
CLARKE	1	1	0	1	0	1
CLAY	3	3	0	0	0	3
COAHOMA	257	250	260	256	253	282
COPIAH	5	9	9	13	14	14
COVINGTON	0	1	1	6	6	3
DESOOT	90	98	117	114	121	140
FORREST	1	3	5	5	8	12
FRANKLIN	5	4	4	4	0	0
GEORGE	6	3	2	2	11	13
GREENE	1	0	0	0	0	0
GRENADA	101	141	125	141	142	131
HANCOCK	1	3	2	2	3	3
HARRISON	10	11	7	9	9	9
HINDS	90	67	82	92	107	107
HOLMES	27	22	15	15	18	18
HUMPHREYS	48	37	38	42	50	62
ISSAQUENA	2	0	2	4	6	6
ITAWAMBA	3	5	4	9	10	7
JACKSON	15	12	10	16	10	11
JASPER	0	0	2	6	4	4
JEFFERSON	0	0	1	0	0	3
JEFFERSON DAVIS	1	3	4	3	3	2
JONES	5	5	4	3	5	4
KEMPER	2	1	1	2	2	2
LAFAYETTE	12	8	9	8	8	12
LAMAR	3	2	0	0	0	1
LAUDERDALE	8	10	9	10	6	6
LAWRENCE	5	3	4	4	5	2
LEAKE	9	5	6	8	5	5
LEE	9	11	7	15	17	16
LEFLORE	172	162	191	215	214	227
LINCOLN	6	8	8	7	8	16
LOWNDES	8	10	7	8	8	5
MADISON	13	13	18	21	27	22

MARION	0	0	0	1	1	4
MARSHALL	11	10	15	10	13	6
MONROE	15	7	6	4	7	11
MONTGOMERY	11	10	15	9	10	15
NESHOBA	4	7	8	8	6	7
NEWTON	7	6	4	3	2	1
NOXUBEE	1	1	0	2	0	0
OKTIBBEHA	10	7	10	12	10	10
PANOLA	37	34	38	40	29	40
PEARL RIVER	1	2	3	2	3	2
PERRY	1	1	0	0	0	0
PIKE	6	3	4	3	2	5
PONTOTOC	9	8	5	4	3	5
PRENTISS	2	3	4	2	3	0
QUITMAN	50	43	46	41	45	43
RANKIN	18	21	23	26	35	51
SCOTT	0	1	1	1	4	2
SHARKEY	37	50	53	57	56	63
SIMPSON	2	3	2	0	0	2
SMITH	1	0	1	2	2	3
STONE	3	4	4	4	0	1
SUNFLOWER	258	205	224	227	261	279
TALLAHATCHIE	85	83	89	85	87	98
TATE	44	37	34	30	34	27
TIPPAH	3	3	4	5	2	1
TISHOMINGO	3	2	3	3	2	1
TUNICA	14	13	11	13	15	14
UNION	9	5	2	4	4	3
WALTHALL	0	0	0	0	0	1
WARREN	30	25	31	21	25	26
WASHINGTON	524	483	487	536	517	596
WAYNE	1	1	0	1	1	1
WEBSTER	2	4	3	2	2	2
WILKINSON	0	0	0	0	0	0
WINSTON	2	3	9	9	3	6
YALOBUSHA	24	24	21	21	18	14
YAZOO	37	35	47	42	53	49
TOTAL	3165	3091	3256	3404	3477	3678

# DELTA STATE UNIVERSITY

## ENROLLMENT OF NEW FULL-TIME TRANSFER STUDENTS

CLASSIFICATION	FALL 1987	FALL 1988	FALL 1989	FALL 1990
ENTERING FRESHMEN*	11	9	13	12
FRESHMEN	26	34	40	42
SOPHOMORES	88	97	147	151
JUNIORS	169	199	206	220
SENIORS	33	29	42	38
<b>TOTAL</b>	<b>327</b>	<b>368</b>	<b>448</b>	<b>463</b>

## ENROLLMENT OF NEW FULL-TIME TRANSFER STUDENTS FROM MISSISSIPPI PUBLIC COMMUNITY COLLEGES

CLASSIFICATION	FALL ** 1987	FALL 1988	FALL 1989	FALL 1990
ENTERING FRESHMEN*		4	3	7
FRESHMEN		16	20	18
SOPHOMORES		55	85	92
JUNIORS		140	156	179
SENIORS		16	23	13
<b>TOTAL</b>		<b>231</b>	<b>290</b>	<b>309</b>

Source: Institutional Research, DSU

\* Entering Freshmen have less than 12 semester credit hours.

\*\* 1987 Mississippi community college data was unavailable.



# DELTA STATE UNIVERSITY

## ENROLLMENT: ACTUAL AND PROJECTED

CLASSIFICATION	Actual 1989	Actual 1990	Projected 1991	-----> 1992	1993	1994	1995
Freshmen	752	773	701	692	681	676	716
Sophomores	627	612	643	583	576	567	562
Juniors	786	842	799	840	762	752	740
Seniors	1050	1103	1191	1131	1187	1077	1063
UNDERGRADUATES	3,215	3,330	3,334	3,246	3,206	3,072	3,082
Masters	508	480	490	500	510	520	530
Specialists	76	59	61	63	65	67	69
Doctors	21	27	28	29	30	31	32
GRADUATES	605	566	579	592	605	618	631
Headcount, on-campus	3,820	3,896	3,913	3,838	3,811	3,690	3,713
Extension, off-campus	159	138	197	203	209	215	221
TOTAL HEADCOUNT	3,979	4,034	4,110	4,041	4,020	3,905	3,934

Source: DSU Institutional Research & Planning

# DELTA STATE UNIVERSITY

## ENROLLMENT SUMMARY OF STUDENTS BY AGE

### FALL, 1990

AGE	Undergraduate		Graduate		Total	
	Men	Women	Men	Women	Men	Women
<b>Full-time Students</b>						
<b>Under 18</b>	<b>2</b>	<b>6</b>	<b>0</b>	<b>0</b>	<b>2</b>	<b>6</b>
18 - 19	289	475	1	0	290	475
20 - 21	461	621	1	1	462	622
22 - 24	321	261	16	36	337	297
25 - 29	95	93	11	13	106	106
30 - 34	21	50	8	3	29	53
35 - 39	14	44	9	7	23	51
40 - 49	10	27	8	11	18	38
50 - 64	1	5	1	3	2	8
65 and over	1	0	0	0	1	0
Age Unknown	14	14	0	2	14	16
<b>Full-time Students</b>						
<b>TOTAL</b>	<b>1229</b>	<b>1596</b>	<b>55</b>	<b>76</b>	<b>1284</b>	<b>1672</b>
<b>Part-time Students</b>						
<b>Under 18</b>	<b>9</b>	<b>10</b>	<b>0</b>	<b>0</b>	<b>9</b>	<b>10</b>
18 - 19	6	3	0	0	6	3
20 - 21	13	18	0	1	13	19
22 - 24	42	39	6	24	48	63
25 - 29	33	46	20	43	53	89
30 - 34	16	57	14	59	30	116
35 - 39	26	58	24	86	50	144
40 - 49	27	68	40	101	67	169
50 - 64	24	39	17	25	41	64
65 and over	5	8	0	1	5	9
Age Unknown	2	8	11	10	13	18
<b>Part-time Students</b>						
<b>TOTAL</b>	<b>203</b>	<b>354</b>	<b>132</b>	<b>350</b>	<b>335</b>	<b>704</b>
<b>TOTAL</b>						
<b>All Students</b>	<b>1432</b>	<b>1950</b>	<b>187</b>	<b>426</b>	<b>1619</b>	<b>2376</b>

## ENROLLMENT SUMMARY OF STUDENTS BY RACE

	White		Black		Other	
	Men	Women	Men	Women	Men	Women
Undergraduate	1234	1469	191	470	7	11
Graduate	145	264	38	159	4	3
Full-time	1098	1229	177	434	9	9
Part-time	281	504	52	195	2	5

# DELTA STATE UNIVERSITY

## UNDERGRADUATE MAJORS BY SEX AND MINORITY STATUS FALL, 1990

	Male	% Male	Female	% Female	TOTAL	Minorities	% Minorities
UNDECLARED (UNDERGRADUATE)	220	42.7%	295	57.3%	515	53	10.3%
<b>PRE-MEDICAL</b>	14	56.0%	11	44.0%	25	3	12.0%
PHYSICAL THERAPY	6	28.6%	15	71.4%	21	5	23.8%
PRE-VETERINARY MEDICINE	0	0.0%	3	100.0%	3	0	0.0%
DENTAL HYGIENIST	0	0.0%	1	100.0%	1	1	100.0%
MEDICAL RECORDS ADMINISTRATION	0	0.0%	4	100.0%	4	2	50.0%
OCCUPATIONAL THERAPY	1	20.0%	4	80.0%	5	1	20.0%
PRE-ENGINEERING	18	75.0%	6	25.0%	24	10	41.7%
PRE-PHARMACY	19	43.2%	25	56.8%	44	6	13.6%
PRE OPTOMETRY	0	0.0%	3	100.0%	3	1	33.3%
PRE-DENTAL	2	40.0%	3	60.0%	5	0	0.0%
NURSING	7	7.8%	83	92.2%	90	43	47.8%
RN-BSN TRACT	2	5.6%	34	94.4%	36	14	38.9%
ART	2	16.7%	10	83.3%	12	1	8.3%
ART EDUCATION	1	33.3%	2	66.7%	3	0	0.0%
CRAFTS	1	100.0%	0	0.0%	1	0	0.0%
GRAPHICS DESIGN	19	46.3%	22	53.7%	41	6	14.6%
INTERIOR DESIGN	2	8.0%	23	92.0%	25	6	24.0%
PAINTING	3	75.0%	1	25.0%	4	0	0.0%
SCULPTURE	0	0.0%	1	100.0%	1	0	0.0%
AUDIOLOGY & SPEECH PATHOLOGY	1	2.2%	45	97.8%	46	11	23.9%
SPEECH/LANGUAGE PATHOLOGY	2	15.4%	11	84.6%	13	2	15.4%
BIOLOGY	74	54.8%	61	45.2%	135	26	19.3%
ENVIRONMENTAL SCIENCE	6	54.5%	5	45.5%	11	0	0.0%
HISTORY	14	53.8%	12	46.2%	26	3	11.5%
ENGLISH	15	27.8%	39	72.2%	54	7	13.0%
SPANISH	1	20.0%	4	80.0%	5	1	20.0%
MATHEMATICS	24	41.4%	34	58.6%	58	15	25.9%
MUSIC	7	63.6%	4	36.4%	11	2	18.2%
MUSIC EDUCATION	26	74.3%	9	25.7%	35	5	14.3%
GUITAR	1	100.0%	0	0.0%	1	0	0.0%
KEYBOARD	0	0.0%	3	100.0%	3	0	0.0%
VOCAL	4	44.4%	5	55.6%	9	3	33.3%

	Male	% Male	Female	% Female	TOTAL	Minorities	% Minorities
INSTRUMENTAL MUSIC EDUCATION	7	70.0%	3	30.0%	10	1	10.0%
PERFORMANCE	3	60.0%	2	40.0%	5	0	0.0%
CHEMISTRY	23	54.8%	19	45.2%	42	8	19.0%
MEDICAL TECHNOLOGY	3	14.3%	18	85.7%	21	11	52.4%
POLITICAL SCIENCE	12	52.2%	11	47.8%	23	7	30.4%
<b>CRIMINAL JUSTICE</b>	<b>63</b>	<b>60.0%</b>	<b>42</b>	<b>40.0%</b>	<b>105</b>	<b>36</b>	<b>34.3%</b>
LAW ENFORCEMENT	10	71.4%	4	28.6%	14	4	28.6%
CORRECTIONS	3	75.0%	1	25.0%	4	1	25.0%
SOCIAL SCIENCE	44	52.4%	40	47.6%	84	11	13.1%
SOCIAL WORK	6	13.3%	39	86.7%	45	20	44.4%
SOCIOLOGY	2	40.0%	3	60.0%	5	3	60.0%
PSYCHOLOGY	18	25.0%	54	75.0%	72	16	22.2%
ACCOUNTING	96	38.9%	151	61.1%	247	45	18.2%
OFFICE ADMINISTRATION	1	2.1%	47	97.9%	48	35	72.9%
BUSINESS EDUCATION	3	15.8%	16	84.2%	19	6	31.6%
AVIATION MANAGEMENT	35	79.5%	9	20.5%	44	5	11.4%
AIRWAY SCIENCE	6	100.0%	0	0.0%	6	3	50.0%
GENERAL AVIATION	11	91.7%	1	8.3%	12	2	16.7%
FLIGHT OPERATIONS	85	85.0%	15	15.0%	100	5	5.0%
COMPUTER INFORMATION SYSTEM	75	46.6%	86	53.4%	161	49	30.4%
FINANCE	50	71.4%	20	28.6%	70	10	14.3%
INSURANCE & REAL ESTATE	24	58.5%	17	41.5%	41	3	7.3%
GENERAL BUSINESS	97	59.1%	67	40.9%	164	34	20.7%
MANAGEMENT	92	60.5%	60	39.5%	152	36	23.7%
MARKETING	73	60.8%	47	39.2%	120	9	7.5%
SPECIAL EDUCATION	4	9.3%	39	90.7%	43	11	25.6%
ELEMENTARY EDUCATION(K-8)	8	2.7%	292	97.3%	300	63	21.0%
HEALTH PHYS ED & RECREATION	82	82.8%	17	17.2%	99	8	8.1%
SPORTS INFORMATION	1	100.0%	0	0.0%	1	0	0.0%
HOME ECONOMICS	0	0.0%	12	100.0%	12	3	25.0%
CHILD DEVELOPMENT	0	0.0%	12	100.0%	12	1	8.3%
CONSUMER RELATIONS	0	0.0%	7	100.0%	7	0	0.0%
FASHION MERCHANDISING	1	4.8%	20	95.2%	21	6	28.6%

# DELTA STATE UNIVERSITY

## DISTRIBUTION OF ENHANCED ACT SCORES

Standard Scores	English		Mathematics				Reading			Science Reasoning		Composite Score
	Score	Usage/Mechanics	Rhetorical Skills	Score	Pre/Elem. Algebra	Int. Alg./Calc./Geometry	Plane Geometry / Trig.	Score	Social Stud./Science	Arts/Literature	Score	
36	0	0	0	0	0	0	0	0	0	0	0	0
35	0	0	0	0	0	0	0	1	0	0	0	0
34	1	0	0	0	0	0	0	2	0	0	0	0
33	2	0	0	0	0	0	0	1	0	0	0	0
32	0	0	0	0	0	0	0	2	0	0	0	0
31	4	0	0	0	0	1	0	0	0	0	0	0
30	4	0	0	1	0	0	0	2	0	0	1	2
29	4	0	0	2	0	0	0	8	0	0	5	3
28	12	0	0	0	0	0	0	8	0	0	5	2
27	7	0	0	2	0	0	0	7	0	0	1	7
26	9	0	0	8	0	0	0	10	0	0	4	8
25	14	0	0	6	0	0	0	15	0	0	5	7
24	15	0	0	8	0	0	0	10	0	0	6	11
23	7	0	0	7	0	0	0	14	0	0	11	14
22	10	0	0	8	0	0	0	11	0	0	12	10
21	19	0	0	23	0	0	0	18	0	0	20	19
20	22	0	0	27	0	0	0	16	0	0	29	29
19	27	0	1	28	0	0	0	25	1	0	34	41
18	25	4	1	26	2	0	0	20	1	2	28	33
17	20	7	1	30	0	0	0	20	5	7	29	20
16	11	6	7	23	2	1	0	14	6	13	13	12
15	10	18	7	16	3	2	3	7	15	15	13	6
14	3	11	14	10	7	9	6	6	18	13	7	1
13	2	23	26	2	15	8	13	4	17	10	2	0
12	1	24	21	1	21	23	18	4	13	28	0	0
11	1	29	19	1	32	29	33	4	32	43	5	5
10	0	34	47	1	38	60	44	1	28	29	0	0
9	0	38	42	0	39	37	54	0	42	24	0	0
8	0	18	24	0	32	27	34	0	29	17	0	0
7	0	11	14	0	26	11	12	0	9	9	0	0
6	0	6	6	0	6	2	5	0	7	5	0	0
5	0	1	0	0	4	11	1	0	0	9	0	0
4	0	0	0	0	2	1	6	0	3	2	0	0
3	0	0	0	0	1	7	0	0	3	0	0	0
2	0	0	0	0	0	0	1	0	0	0	0	0
1	0	0	0	0	0	1	0	0	1	0	0	0
Total	230	230	230	230	230	230	230	230	230	230	230	230
Mean	21.170	11.135	10.609	18.996	9.765	9.657	9.652	20.800	10.613	10.961	19.378	20.104

\* Source: IHL Statistical Report, Scores are for First-time Emerging Freshmen who took the Enhanced ACT.

# DELTA STATE UNIVERSITY

## DISTRIBUTION OF ACT & SAT CONVERSIONS & ENHANCED ACT

Standard Score	Enhanced Composite	ACT Conversion			SAT Conversion	Total Enhanced ACT Composite & SAT Conv.
		English	Math	Composite		
36	0	0	0	0	0	0
35	0	0	0	0	0	0
34	0	1	0	0	0	0
33	0	0	0	1	0	1
32	0	1	1	0	0	0
31	0	4	1	0	0	0
30	2	3	1	1	0	3
29	3	2	2	3	0	6
28	2	2	5	4	0	6
27	7	5	3	6	1	14
26	8	6	6	14	0	22
25	7	10	4	9	0	16
24	11	18	11	7	0	18
23	14	8	9	8	0	22
22	10	16	18	11	1	22
21	19	40	19	35	3	57
20	29	14	14	16	2	47
19	41	36	33	41	2	84
18	33	6	16	21	0	54
17	20	7	22	5	0	25
16	12	2	6	1	0	13
15	6	0	4	0	0	6
14	1	2	3	0	0	1
13	0	0	0	0	0	0
12	0	0	0	0	0	0
11	5	0	0	0	0	5
10	0	0	0	0	0	0
9	0	0	0	0	0	0
8	0	0	0	0	0	0
7	0	0	0	0	0	0
6	0	0	0	0	0	0
5	0	0	0	0	0	0
4	0	0	0	0	0	0
3	0	0	0	0	0	0
2	0	0	0	0	0	0
1	0	0	0	0	0	0
<b>Total</b>	<b>230</b>	<b>183</b>	<b>178</b>	<b>183</b>	<b>9</b>	<b>422</b>
<b>Mean</b>	<b>20.104</b>	<b>21.825</b>	<b>20.567</b>	<b>21.421</b>	<b>21.111</b>	<b>20.697</b>

Source: BH, Statistical Report

# DELTA STATE UNIVERSITY

## FRESHMEN RETENTION RATES

Year	Number of Entering Freshmen	RETURNING STUDENTS										Enrolled or Graduated in the 5th year	
		As Sophomores		As Juniors		As Seniors		As Seniors		As Seniors		Number	%
		Number	%	Number	%	Number	%	Number	%				
1979	367	263	72%	212	58%	184	50%	184	50%	184	50%	184	50%
1980	371	267	72%	206	56%	175	47%	175	47%	175	47%	175	47%
1981	398	281	71%	220	55%	179	45%	190	48%	190	48%	190	48%
1982	363	308	85%	252	69%	183	50%	157	43%	157	43%	157	43%
1983	462	387	84%	278	60%	245	53%	197	43%	197	43%	197	43%
1984	373	270	72%	216	58%	178	48%	166	45%	166	45%	166	45%
1985	420	294	70%	240	57%	222	53%	213	51%	213	51%	213	51%
1986	440	345	78%	283	64%	238	54%	223	51%	223	51%	223	51%
1987	462	342	74%	278	60%	237	51%						
1988	491	339	69%	272	55%								
1989	455	329	72%										
1990	462												

# DELTA STATE UNIVERSITY

## COMPARATIVE ROOM REPORT-MEN'S & WOMEN'S RESIDENCE HALLS

<u>MEN'S</u>	<u>10/1/86</u>	<u>10/1/87</u>	<u>10/1/88</u>	<u>9/15/89</u>	<u>10/1/89</u>	<u>10/1/90</u>	<u>Capacity</u>
Whittington-Williams	114	115	113	117	113	118	128
Bond-Carpenter	140	131	131	127	126	135	144
Stadium	84	74	78	80	80	71	80
Noel	76	78	71	72	70	72	80
Brewer	86	84	86	79	76	82	88
Clark	77	75	74	75	73	75	80
Longino	79	78	78	76	76	74	80
Total	656	635	631	626	614	627	680

### CLASSIFICATION BREAKDOWN

Freshmen	168	161	173	184	185	143
Sophomores	140	145	139	131	124	140
Juniors	162	160	147	161	157	181
Seniors	166	158	156	138	136	152
Graduates	20	11	16	12	12	11
TOTALS	656	635	631	626	614	627

<u>WOMEN'S</u>	<u>10/1/85</u>	<u>10/1/87</u>	<u>10/1/88</u>	<u>9/15/89</u>	<u>10/1/89</u>	<u>10/1/90</u>	<u>Capacity</u>
Cleveland	84	82	88	89	87	95	93
Cain-Tatum	114	115	111	116	116	113	120
Fugler-Hammett	139	137	140	138	139	138	144
Lawler-Harkins	284	292	285	287	287	287	296
Ward	67	76	77	67	68	83	81
Woolfolk	51	53	59	56	57	69	68
Daugherty	36	42	43	45	43	60	74
TOTALS	775	797	803	798	797	845	876

### CLASSIFICATION BREAKDOWN

Freshmen	212	232	232	217	216	238
Sophomores	199	182	186	190	192	211
Juniors	198	208	212	216	215	228
Seniors	152	162	164	164	163	152
Graduates	14	13	9	11	11	16
TOTALS	775	797	803	798	797	845

<u>OVERALL TOTALS</u>	<u>10/1/85</u>	<u>10/1/87</u>	<u>10/1/88</u>	<u>9/15/89</u>	<u>10/1/89</u>	<u>10/1/90</u>
Freshmen	380	393	405	401	401	381
Sophomores	339	327	325	321	316	351
Juniors	360	368	359	377	372	409
Seniors	318	320	320	302	299	304
Graduates	34	24	25	23	23	27
TOTALS	1431	1432	1434	1424	1411	1472

Source: DSU Student Affairs Office



# DELTA STATE UNIVERSITY

## SEMESTER CREDIT HOUR PRODUCTION BY LEVEL

LEVEL	SUMMER I	SUMMER II	FALL	SPRING	TOTAL
<b>1990-91</b>					
Lower	4661	*	24099	21024	49784
Upper	4756	*	18994	19468	43218
Graduate I	2343	*	1910	1811	6064
Graduate II	1111	*	694	934	2739
total	12871	*	45697	43237	101805
<b>1989-90</b>					
Lower	4514	*	23455	20032	48001
Upper	4503	*	17878	19062	41443
Graduate I	2094	*	1504	1500	5098
Graduate II	1298	*	1007	930	3235
total	12409	*	43844	41524	97777
<b>1988-89</b>					
Lower	4453	3141	22432	20893	50919
Upper	1420	1410	17264	16946	37040
Graduate I	809	445	1643	1647	4544
Graduate II	0	0	1107	946	2053
total	6682	4996	42446	40432	94556
<b>1987-88</b>					
Lower	2302	1981	20666	15612	40561
Upper	2650	1673	16870	17600	38793
Graduate**	1286	1309	3035	3856	9486
total	6238	4963	40571	37068	88840

Sources: DSU Statistical Report

\* Summer I and Summer II terms combined, 1989-90 & 1990-91

\*\* Separate Graduate I and Graduate II hours were unavailable for 1987-88

# DELTA STATE UNIVERSITY

## SEMESTER CREDIT HOURS BY DEPARTMENT

	SUM 90	FALL 90	SPRING 91	TOTAL
<b>ARTS/SCIENCES</b>				
ART	306	1653	1572	3531
BIOLOGICAL SCIENCE	594	2482	2162	5238
HISTORY	375	2133	1962	4470
LANGUAGES & LITERATURE	1487	5029	4645	11161
MATHEMATICS	882	2864	2359	6105
MILITARY SCIENCE	-	175	153	328
MUSIC	172	1765	1360	3297
PHYSICAL SCIENCE	876	2270	2263	5409
SOCIAL WORK	-	345	348	693
SOCIAL SCIENCE	708	2928	3117	6753
SPEECH & HEARING SCIENCE	-	570	519	1089
Subtotal	5400	22214	20460	48074
<b>BUSINESS</b>				
ACCOUNTING	753	1914	1839	4506
COMPUTER INFO SERVICES	489	2173	2247	4909
BUSINESS ED & SECRETARIAL	51	930	745	1726
ECONOMICS & FINANCE	849	3393	3312	7554
MANAGEMENT & MARKETING	912	2970	3084	6966
COMMERCIAL AVIATION	276	1514	1412	3202
Subtotal	3330	12894	12639	28863
<b>EDUCATION</b>				
CURRICULUM & INSTRUCTION	1764	3127	3136	8027
BEHAVIORAL SCIENCES	1709	3939	3285	8933
HEALTH & PHYSICAL ED	638	2440	2715	5793
HOME ECONOMICS	24	804	665	1493
Subtotal	4135	10310	9801	24246
<b>NURSING</b>				
NURSING	6	279	337	622
Subtotal	6	279	337	622
<b>Total</b>	<b>12871</b>	<b>45697</b>	<b>43237</b>	<b>101805</b>

# DELTA STATE UNIVERSITY

## DEGREES CONFERRED BY CIP CATEGORY\*

	YEAR 1986	YEAR 1987	YEAR 1988	YEAR 1989	YEAR 1990	YEAR 1991
<b>BACHELOR'S DEGREES</b>						
<b>BUSINESS &amp; MANAGEMENT</b>	196	252	229	190	211	244
<b>OFFICE ADMINISTRATION</b>	14	9	6	4	7	9
<b>MARKETING &amp; DISTRIBUTION</b>	1	5	11	8	2	5
<b>EDUCATION</b>	78	111	97	77	120	117
<b>FOREIGN LANGUAGES</b>	2	2	0	0	0	6
<b>ALLIED HEALTH</b>	5	1	3	2	0	2
<b>HEALTH SCIENCES</b>	19	18	21	25	24	31
<b>HOME ECONOMICS</b>	7	7	9	4	9	10
<b>LETTERS</b>	14	7	7	10	11	8
<b>LIFE SCIENCE</b>	39	31	24	34	19	22
<b>MATHEMATICS</b>	5	5	10	6	10	7
<b>MULTI/INTERDISCIPLINARY</b>	1	1	1	1	1	2
<b>PHYSICAL SCIENCE</b>	15	16	10	10	9	8
<b>PSYCHOLOGY</b>	23	7	10	20	13	12
<b>CRIMINAL JUSTICE</b>	20	23	22	21	19	26
<b>SOCIAL WORK</b>	11	2	10	13	15	10
<b>SOCIAL SCIENCES</b>	16	15	21	15	14	27
<b>AVIATION</b>	15	24	16	33	32	24
<b>VISUAL &amp; PERFORMING ARTS</b>	24	31	21	13	26	12
<b>TOTAL</b>	505	567	528	486	542	582
<b>MASTER'S DEGREES</b>						
<b>BUSINESS &amp; MANAGEMENT</b>	23	17	12	17	10	9
<b>EDUCATION</b>	109	93	85	95	108	127
<b>LETTERS</b>	0	1	0	0	0	0
<b>TOTAL</b>	132	111	97	112	118	136
<b>SPECIALIST'S DEGREES</b>						
<b>EDUCATION</b>	15	20	8	21	19	17
<b>TOTAL</b>	15	20	8	21	19	17
<b>DOCTOR'S DEGREES</b>						
<b>EDUCATION</b>	1	3	6	2	4	5
<b>TOTAL</b>	1	3	6	2	4	5
<b>GRAND TOTAL - ALL DEGREES</b>	653	701	639	621	683	740

Source: HIL Statistical Report

\* A Classification of Instructional Programs (CIP) developed by the U.S. Dept. of Education.

# DELTA STATE UNIVERSITY

## ACADEMIC PROGRAM INVENTORY

PROGRAMS	CIP	DEGREES
Accounting	06.02015046	BBA
Art	50.01015106	BA
Art	50.01015107	BFA
Art	50.01015108	BSGS
Audiology & Speech Pathology	18.01035072	BS
Audiology & Speech Pathology	18.01035073	BSGS
Aviation Management	49.01015104	BCA
Biology	26.01015085	BS
Biology Education	13.13995656	BSE
Business Administration	06.04014004	MBA
Business Education	13.13035059	BSE
Chemistry	40.05015092	BS
Chemistry Education	13.13995076	BSE
Computer Information Systems	06.12015050	BBA
Counseling	13.11014008	MED
Criminal Justice	43.01045095	BSCJ
Education Administration & Supervision	13.04013001	EDS
Education Administration & Supervision	13.04014005	MED
Elementary Education	13.12025055	BSE
Elementary Education	13.12024009	MED
Elementary Education	13.12023003	EDS
English	23.01015078	BA
English	23.01015659	BSGS
English Education	13.13055079	BSE
English Education	13.13054021	MED
Environmental Science	30.01015090	BS
Fashion Merchandising	08.01025053	BS
Finance	06.03015047	BBA
Flight Operations	49.01025105	BCA
French	16.09015688	BA
French Education	13.13065683	BSE
General Business	06.01015045	BBA
German	16.05015682	BA
German Education	13.13065689	BSE
Health, Physical Education & Recreation	13.13144016	MED
Health, Physical Education & Recreation	13.13145065	BSGS
Health, Physical Education & Recreation	13.13145064	BSE

History	45.08015100	BA	
History	45.08015101	BSGS	
History Education	13.13994028		MED
Home Economics	19.01015077	BS	
Home Economics Education	13.13085060	BSE	
Insurance & Real Estate	06.08015049	BBA	
Management	06.04015048	BBA	
<b>Marketing</b>	<b>06.14015051</b>	<b>BBA</b>	
Mathematics	27.01015089	BSGS	
Mathematics	27.01015088	BS	
Mathematics Education	13.13115061	BSE	
Mathematics Education	13.13114014		MED
Medical Technology	17.03105071	BS	
Music	50.09015113	BA	
Music Education	13.13125063	BME	
Music Education	13.13124015		MME
Natural Science	13.13164018		MSNS
Nursing	18.11015075	BSN	
Office Administration	07.04015052	BBA	
Performance	50.09035114	BM	
Political Science	45.10015102	BA	
Professional Studies	13.01011001		EDD
Psychology	42.01015094	BA	
School Psychology	13.08014006		MED
Secondary Education	13.12053004		EDS
Social Science	45.01015098	BSGS	
Social Science Education	13.13175097	BSE	
Social Science Education	13.13174026		MED
Social Work	44.07015096	BSW	
Sociology	45.11015103	BA	
Spanish	16.09055068	BA	
Spanish Education	13.13065069	BSE	
Special Education	13.10014007		MED
Special Education	13.10015054	BSE	
Traffic Safety Education	13.13044013		MED

# DELTA STATE UNIVERSITY

## AVERAGE OF GRADES AWARDED BY COURSE TYPE-FALL, 1990

	SCHOOL OF ARTS & SCIENCES	Number Averaged	Average
AMU	Applied Music	4	3.50
ART	Art	565	2.81
ASP	Aerospace Studies	8	3.38
AUP	Audiology & Speech Pathology	169	3.00
BIO	Biology	654	2.28
CHE	Chemistry	305	2.06
COR	Corrections	26	2.31
CRJ	Criminal Justice	82	2.56
ENG	English	1155	2.12
FRE	French	62	2.77
GEO	Geography	149	2.37
GER	German	20	2.65
HIS	History	749	1.79
JOU	Journalism	14	3.07
LAT	Latin	8	3.25
LEN	Law Enforcement	67	2.69
MAT	Math	936	1.57
MSC	Military Science	20	3.10
MUS	Music	345	2.45
PHI	Philosophy	83	1.87
PHY	Physical Science	309	2.33
PLS	Paralegal Studies	63	2.56
PSC	Political Science	143	2.15
SOC	Sociology	410	2.44
SPA	Spanish	47	2.55
SPE	Speech	288	2.35
SSC	Social Science	104	2.77
SWO	Social Work	81	2.68
	SCHOOL OF BUSINESS		
ACC	Accounting	652	2.11
CAV	Commercial Aviation	511	2.79
CIS	Computer Information Systems	780	2.29
ECO	Economics	504	2.11
FIN	Finance	208	2.39
GBU	General Business	267	2.78
IRR	Insurance & Real Estate	152	2.44
MGT	Management	742	2.71
MKT	Marketing	312	2.10
OAD	Office Administration	324	2.67

SCHOOL OF EDUCATION			
CEL	Elementary Ed.	388	2.78
CML	Media-Library Science	70	2.67
CRD	Reading Ed.	32	3.03
CSD	Secondary Ed.	10	3.50
CSP	Special Education	221	2.51
CUR	Curriculum	112	2.86
EPY	<b>Educational Psychology</b>	<b>220</b>	<b>2.59</b>
HEC	Home Economics	237	2.94
HSE	Health & Safety Ed.	100	3.17
PER	Physical Ed. & Rec.	233	2.83
PSY	Psychology	588	2.20
TSE	Traffic Safety Ed.	36	2.25
SCHOOL OF NURSING			
NUR	Nursing	56	2.21

Source: DSU Institutional Research

\* Grade averages are computed on undergraduate A,B,C,D,F & W grades for lecture classes of 3 or more hours.

# DELTA STATE UNIVERSITY

## TUITION & FEES

### ANNUAL RATES

#### 1990-91

	General Tuition	Athletic Fee	Union Fee	Health Fee	Student Activity Fee	Room Rent	Total
Resident Dorm Student	1375	175	45	51	60	1690	3396
Resident Day Student	1375	175	45	51	60	--	1706
Nonresident Dorm Student	2557	175	45	51	60	1690	4578
Nonresident Day Student	2557	175	45	51	60	--	2888

#### Special Fees

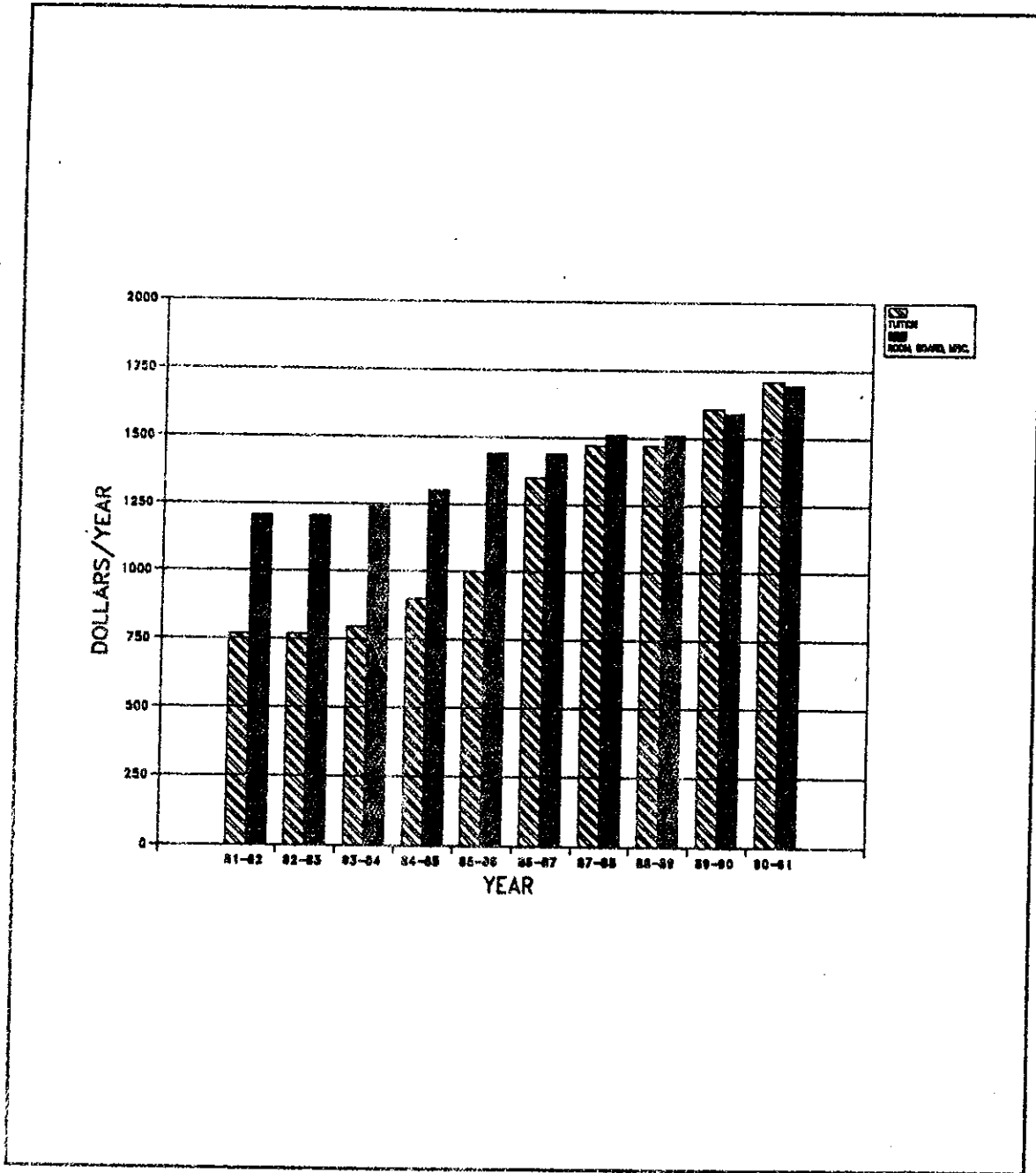
Private music lessons per semester hour	
First semester hour	50
Additional semester hour	35
Graduation Fees	30
Transcript - after first	2
Overload Fees	
Undergraduate - for hours over 19	57
Graduate - for hours over 13	76
Lab Breakage Fee	5



# DELTA STATE UNIVERSITY

## TUITION AND FEES

### 1981 - 1990



Source: H.I. Statistical Report

# DELTA STATE UNIVERSITY

## CURRENT FUND REVENUES & EXPENDITURES \*

### 1990-1991

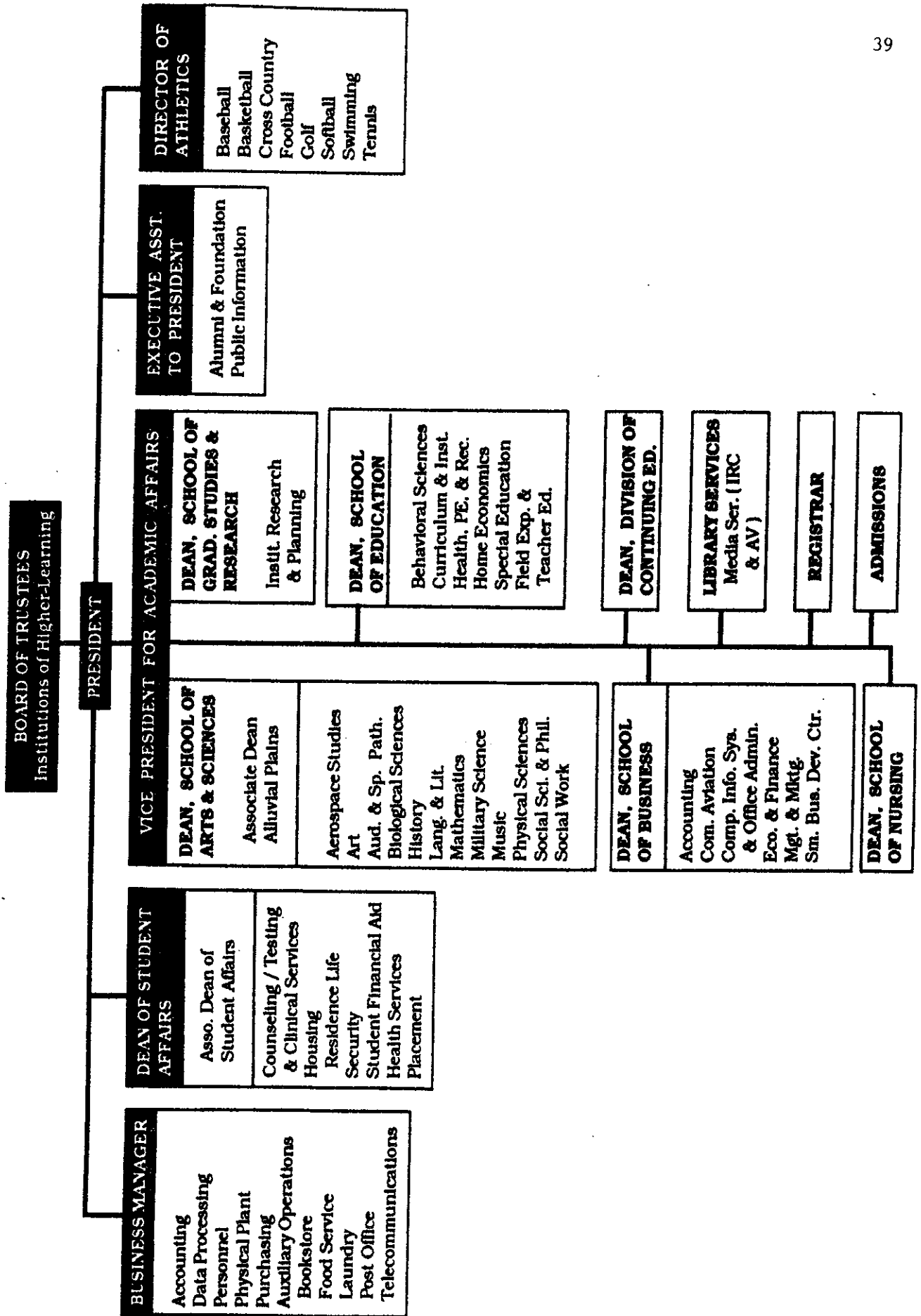
#### EXPENDITURES (CURRENT FUND)

INSTRUCTION	\$9,779,451	44.1%
RESEARCH	397,757	1.8%
PUBLIC SERVICE	715,229	3.2%
ACADEMIC SUPPORT	2,007,254	9.1%
STUDENT SERVICES	1,877,959	8.5%
INSTITUTIONAL SUPPORT	1,721,232	7.8%
PLANT OPERATIONS	1,909,753	8.6%
STUDENT AID	3,613,774	16.3%
INDIRECT COST RECOVERIES	49,135	0.2%
ADMIN. COST RECOVERIES	26,275	0.1%
OTHER ALLOCATIONS	76,176	0.3%
	<b>\$22,173,995</b>	<b>100.0%</b>

#### REVENUES (CURRENT FUND)

TUITION & FEES	\$6,749,180	29.3%
STATE APPROPRIATIONS	11,860,958	51.5%
FEDERAL GRANTS & CONTRACTS	3,301,634	14.3%
STATE GRANTS & CONTRACT	28,175	0.1%
PRIVATE GRANTS & CONTRACT	439,877	1.9%
ENDOWMENT INCOME	21,423	0.1%
INTEREST INCOME	320,632	1.4%
SALES & SERVICES - ED. ACTIVITIES	307,948	1.3%
OTHER SOURCES	17,426	0.1%
	<b>\$23,047,253</b>	<b>100.0%</b>

**DELTA STATE UNIVERSITY  
ADMINISTRATIVE AND ACADEMIC ORGANIZATION  
July 1, 1991**



# DELTA STATE UNIVERSITY

## FACULTY CHARACTERISTICS

	SCHOOL YEAR 81-82	SCHOOL YEAR 82-83	SCHOOL YEAR 83-84	SCHOOL YEAR 84-85	SCHOOL YEAR 85-86	SCHOOL YEAR 86-87	SCHOOL YEAR 87-88	SCHOOL YEAR 88-89	SCHOOL YEAR 89-90	SCHOOL YEAR 90-91
TENURED	58	61	60	66	68	63	59	60	64	61
NOT TENURED, TENURE TRACK*	150	148	142	141	135	157	161	175	177	93
NOT-TENURED										104
MALE	135	140	137	134	133	142	148	153	155	162
FEMALE	73	69	65	73	70	78	72	82	86	96
PROFESSOR	64	60	61	63	65	66	73	77	76	75
ASSOC PROF	30	35	31	38	36	31	21	19	23	32
ASST PROF	61	57	57	49	58	49	55	55	52	53
INSTRUCTOR	53	57	52	56	42	65	64	74	90	98
OTHER	0	0	1	1	2	9	7	10	0	0
AGE OVER 65	1	1	2	1	1	1	1	3	2	1
AGE 61-65	11	11	11	11	9	9	10	11	7	8
AGE 51-60	33	30	32	38	33	35	35	42	42	43
AGE 41-50	47	52	57	73	71	76	86	93	100	113
AGE 31-40	82	87	76	70	70	80	70	68	71	67
AGE 21-30	34	28	24	14	19	19	18	18	19	26
DOCTORAL	100	102	102	107	107	103	100	102	101	107
FIRST PROF	1	0	1	2	2	3	6	4	3	4
SPECIALIST	2	2	1	1	1	2	3	6	8	4
MASTER'S	99	101	96	94	90	104	102	114	122	135
BACHELOR'S	6	4	2	3	3	8	9	9	7	8
TOTAL	208	209	202	207	203	220	220	235	241	258
FTE FILLED POSITIONS**					178	166	164	180	181	178

Source: IFL Statistical Report

\* : New category

\*\* : Full-time Equivalent Filled Positions as reported on Analysis of Number of Faculty Positions Budgeted. Teaching faculty only, does not include administrators, part-tions, or professional non-faculty with faculty rank.

# DELTA STATE UNIVERSITY

## W.B. ROBERTS LIBRARY COLLECTIONS AND UTILIZATION 1981-90

	1981-82	1982-83	1983-84	1984-85	1985-86	1986-87	1987-88	1988-89	1989-90
<u>LIBRARY COLLECTIONS</u>									
Bound Volumes	228,973	236,364	238,230	242,318	245,722	247,385	251,900	257,484	261,334
Microforms	461,394 *88,215	474,941 *90,880	495,652 *94,953	520,507 *99,855	546,034 *104,888	574,525 *110,537	599,477 *114,441	622,880 *118,041	638,680 *123,149
U.S. Government Documents	70,455	73,762	71,162	72,813	76,164	78,017	80,426	82,814	***82,353
Serial Subscriptions	1,668	1,684	1,504	1,506	1,488	1,653	1,653	1,653	1,634

COLLECTION USE

Books Circulated	60,074	67,876	65,765	60,630	56,678	52,206	52,229	38,123	45,001
Reserve Books Circulated	16,255	24,753	12,632	19,595	18,710	21,016	10,275	15,367	16,462
Microforms Use	4,248	6,043	6,436	7,233	8,329	8,012	7,010	7,377	5,508
Tours	50	40	37	41	40	28	62	35	92
Bib. Searches	139	100	93	117	88	52	124	50	146

INTERLIBRARY LOAN

Loaned									
Books	16	57	190	267	310	238	279	399	590
Copies	108	240	167	117	136	236	276	250	439
Borrowed									
Books	265	793	351	408	542	332	324	239	233
Copies	504	655	501	522	281	437	448	500	663

\* Volume Equivalency    \*\*\* 8912 Discarded

# DELTA STATE UNIVERSITY

## PRESIDENT'S ANNUAL REPORT 1990-1991

Dr. Kent Wyatt, President

The feelings of optimism and opportunity resulting from the 1989-90 appropriation were followed by a sense of disappointment and despair as the 1990-91 budget cuts provided an appropriation that returned the University to 1985 funding levels. During the six-year period since 1985, the University has experienced significant enrollment growth, with full-time equivalent enrollment increasing 22 percent. During that same period the lack of adequate funding by the state in the face of this growth resulted in 122 percent increase in tuition and fees. The lack of adequate state funding has also produced serious threats to the quality of education received by students. Budgets were reduced for salaries and wages, instructional equipment, professional faculty travel, commodities, and library books. Average salaries fell further behind our regional peers. Reduced levels of funding for faculty development, research, travel, library holdings, and equipment pose a serious threat to the University's ability to meet accreditation standards.

In spite of fiscal constraints, the University continued its tradition of spending most of its budget on academics. Expenditures on instruction and academic support represented 62 percent of the total Education and General budget.

During 1990-91 several changes were made in the University administration. Dr. Roy Moore, Professor of Management, became Dean of the School of Business, replacing Dr. John Gibson, who retired with 36 years of service to the University. Dr. Barbara Powell joined the faculty as Dean of the School of Nursing. Dr. Wayne Blansett, Associate Dean of Student

Affairs, became Dean of Student Affairs after O.W. Reily retired with 24 years of service to the University.

Delta State University continued to maintain growth in enrollment. During the fall semester, the on-campus enrollment headcount was 3896, an increase of 5.6 percent over the previous year. This marked the sixth straight year the University had an enrollment increase. From 1978 to 1990, Delta State on-campus enrollment increased 37 percent, compared to 7.9 percent for the system. The total enrollment was 4034, an increase of 4.8 percent over 1989-90. The student body consisted of 22.1 percent minority students, making it the most diversified of any university in the state.

The continuing trend of enrollment increases reflects very favorably on the health of the University. According to a recent study, the strength and quality of its academic programs are the primary reasons students choose to attend Delta State. Other reasons are low cost, good job placement of graduates, and the size of the University. The pattern of enrollment growth affirms the University's commitment to excellence and quality in its instructional program. Indicative of overall academic quality is the reaccreditation of the social work program by the national Council on Social Work Education.

Typical among the excellent academic departments are the Division of Behavioral Sciences and Department of Commercial Aviation. The Division of Behavioral Sciences, containing the programs of counseling, psychology, school psychology, and special education, offers baccalaureate and graduate degrees that lead to careers as professionals in a wide range of human services. All faculty in the division hold earned terminal degrees. The Council for Accreditation of Counseling and Related Educational Programs granted accreditation for the

program of community counseling, finding the program to meet or exceed stated national standards of excellence and quality in the training of counselors at the Master's level.

Beginning in 1981 with seven majors, the Department of Commercial Aviation now has more than 160 majors. The only program of its type in Mississippi, it is one of only 45 in the nation accredited by the Federal Aviation Administration. Additional national recognition comes with the location at Delta State of the headquarters of the National Intercollegiate Flying Association. The NIFA national Executive Director is among the six faculty and the five full-time and twelve part-time flight instructors.

There were several high points in the academic year. Dr. William F. LaForge, Dean of the School of Arts and Sciences, was speaker at Academic Honors Day. An alumna, Dr. Patricia A. Thrash, Executive Director of the North Central Association Commission on Institutions of Higher Education, gave the address at Commencement exercises, at which time the University awarded 740 degrees, including 136 Masters, 17 Specialists, and 5 Doctoral degrees.

In recent years Delta State University has attempted to increase budgetary support for faculty research and other scholarly activities. An increasing number of faculty are interested in strengthening their teaching through research and other scholarly activities. Accreditation agencies are looking more closely at research and scholarly productivity among the faculty, particularly in graduate education. Due to budget reductions, funds were available to support only 12 projects, involving 51 faculty. Most of the funds were used for small travel grants to present papers at research conferences. Small faculty development awards allowed another 26 faculty to participate in seminars, workshops, and other activities aimed at improvement of teaching skills.



In 1990 both a Faculty Senate and an Administrative Staff Council were organized. These organizations are working well to improve communication and to provide greater faculty/staff participation in the decision-making process.

The W.B. Roberts Library further developed its computer-based on-line library information system, the first of any university in Mississippi. The first phase, consisting of on-line catalog, on-line circulation, and dial-in access, allows students and faculty to browse through authors, titles, or subjects much more efficiently than a standard card catalog. Future phases of automation will link the card catalogs of the other state universities as they become automated.

Campus-wide telecommunications and computer capabilities greatly improved with the installation of a fiber optics network around the campus. This network, with a new mainframe computer, terminals, and software, will allow academic departments and other units of the University to communicate with each other for more efficient accomplishment of student advising and registration, student financial aid, business transactions, personnel record management, institutional research, and other information management.

The School of Nursing occupied the old city hospital after extensive renovations. These new facilities provide classrooms, laboratories, and offices for the continued growth of this School. One of the more prominent features is a nurse-managed wellness center, providing screening, counseling for nutrition and health, cardiovascular rehabilitation, health promotion classes, and other activities of research and service. Appropriations from the 1990 Legislature provided \$800,000 for repair and renovation, including painting, roofing, waterproofing, mechanical systems, flooring, and plumbing in other buildings.

A new performing arts center, long number one on the building priority list, gained an initial approval of \$2.2 million by the 1990 Legislature. The total cost of the project will be \$7.5

million. However, the project is delayed because no additional funds were appropriated by the 1991 Legislature.

The new Alumni/Foundation House was dedicated. The result of \$475,000 in gifts, it serves as a center for alumni activities and a welcome center for the campus.

The Office of the Alumni Association and Foundation reported that, after raising \$1 million for the B.F. Smith Chair for Economic Development, efforts have begun to fill that position. This endowed chair will give professional leadership to economic development efforts in the Delta. The drive to raise \$1 million for the John Yurkow Chair of Accountancy has begun, with pledges and gifts past the 25 percent point. Additional goals were set for the Nursing Scholarship Fund (\$30,000) and the H.J. Jacob Scholarship Fund (\$100,000). A deferred giving program has been established.

Excluding construction and financial aid, the University received \$1,300,000 for grants and contracts. The U. S. Department of Agriculture and other agencies awarded more than \$600,000 to the Center for Alluvial Plains Studies for research and other projects. Other major sources of grants were the South Delta Planning and Development District for an intergenerational day-care center, National Science Foundation for an atomic absorption spectrometer, U.S. Department of Education for biology and mathematics institutes and a literacy program. The University is continuing to place increased emphasis on securing external funds for instruction, research, and public service.

Supplementing the modest funds allocated for public service, Delta State further expanded its commitment to public service in a very needy part of the state. Major workshops and forums were sponsored on the topics of science and mathematics education, and child abuse prevention. An important program was begun to improve the level of literacy among adults. The

Small Business Development Center improves the economic quality of life in the Delta by<sup>47</sup> providing information, counseling, and assistance to persons interested in starting or operating a small business. Cooperation with the Lower Mississippi Delta Development Commission and the Delta Council also brought about economic development efforts.

The high point of the athletic program was the baseball team, winner of the Gulf South Conference, with two players named first team All-American. The women's basketball team participated in the regional NCAA tournament for the sixth consecutive year. Other teams performed well in the highly competitive Gulf South Conference. Five student-athletes were named to the Academic All-American team.

Because the 1990-91 year saw a funding decrease of \$484,197, followed by a 1991-92 allocation decrease of \$504,743, salaries for faculty and staff are no longer competitive. Needed equipment, supplies, and repairs must again be postponed. Yet in other respects the year was positive for Delta State. Although there are needs yet to be met, we remain committed to providing excellence in higher education and with that a better life for Mississippians.

Moving into 1991-92 Delta State will sustain the quality and affirm the confidence placed in it by loyal students, faculty, alumni, friends, and the state of Mississippi.