



DELTA STATE
UNIVERSITY

FACTBOOK

2007-2008

OFFICE OF INSTITUTIONAL
RESEARCH & PLANNING

FACTBOOK

2007-2008

**OFFICE OF INSTITUTIONAL
RESEARCH & PLANNING**

SUZANNE SIMPSON, COORDINATOR (June 2008)
MARCIE BEHRENS, ASSESSMENT ANALYST
VERONICA TUCKER, RESEARCH ANALYST
LISA BELL, RESEARCH ASSOCIATE
CHRIS AMMONS, COORDINATOR (July 2007-May 2008)

DELTA STATE UNIVERSITY

DELTA STATE UNIVERSITY

PREFACE

The Delta State University Factbook is an annual publication that provides a ready source of information to answer questions frequently asked about the University. This edition contains a statistical overview of operations for the 2007-08 academic year. Included is information, both past and present, concerning enrollment, student characteristics, faculty characteristics, revenue, and expenditures. Its primary purpose is to promote understanding for those seeking information about Delta State University.

Most of the information in this edition was obtained from statistical reports published by the Board of Trustees of State Institutions of Higher Learning, State of Mississippi. The data submitted to the Board of Trustees for this report represents not only the work of the Office of Institutional Research & Planning but also of various administrative offices such as Registrar, Enrollment Services, Human Resources, Academic Affairs, Financial Assistance, Student Affairs, Office of Information Technology, Athletics, University Relations, Alumni Affairs, and the Library. Without their continued assistance and cooperation, this publication would not be possible. We extend to them our sincere appreciation.

The Office of Institutional Research and Planning, in its on-going effort to provide timely management information, encourages your comments and suggestions for improvement. We hope you find this edition of the *Factbook* both informative and useful.

Office of Institutional Research and Planning
Kent Wyatt Hall 234
Delta State University
Cleveland, MS 38733

TABLE OF CONTENTS

Preface	iii
I. <u>GENERAL INFORMATION</u>	
Board of Trustees	2
President's Cabinet & Academic Council	3
Organizational Chart	4
Historical Sketch	5
Institutional Vision & Mission	6
Guiding Principles	7
University Characteristics	9
II. <u>STUDENTS</u>	
<u>New Students</u>	
Applications, Admissions, and Enrollments	11
ACT Scores for On Campus First-Time Entering Freshmen	12
ACT Data for Entering Freshmen	13
Major Feeder High Schools for ACT Tested Freshmen	14
<u>Enrollment</u>	
Enrollment of MS Institutions by Level	16
Enrollment of MS Institutions by Headcount and FTE	17
Enrollment of Students by class: 10-Year Trend	18
Enrollment of Students by Status: 10-Year Trend	19
Enrollment of Students by Race: 10-Year Trend	20
Enrollment of Students by School: 10-Year Trend	21
Enrollment Summary of Students by Race: On and Off Campus	22
Enrollment by Level: 5-Year Trend (Off Campus/Dual)	23
Enrollment of Graduate Students by Academic Program Level	24
Enrollment by Age Distribution: Full Time & Part Time	25
Enrollment by Age Distribution: Level & Ethnicity	26
Active Enrollment Analysis	27
<u>Credit Hour Production</u>	
Credit Hour Production Analysis	34
Credit Hour Summary by Discipline	41
<u>Housing</u>	
Men & Women Comparative Room Report: 5-Year Trend	44
Enrollment of Students by Counties: 5-Year Trend	45
Enrollment of Students by Counties: Map	48

TABLE OF CONTENTS (Cont.)

III. DEGREES GRANTED

Degrees

Academic Program Inventory	50
Degrees Awarded: 5-Year Trend	52
Combined Commencement: Dec. 2007 & May 2008	53
Graduates by Race, Gender, and College	56
Retention/Graduation Rates (First-Time Freshmen) Fall 2001-2007	57

IV. RESOURCES

Resources

Financial Aid Summary	59
Library Collections and Utilizations	60
Athletics	61

Glossary

List of Course & Abbreviations	63
List of Degrees & Abbreviations	64
Other Terminology	65

GENERAL INFORMATION



Delta State University

DELTA STATE UNIVERSITY
INSTITUTIONS OF HIGHER LEARNING
BOARD OF TRUSTEES
2007-08

Ms. Virginia Shanteau Newton
Gulfport

Dr. Bettye H. Neely
Grenada

Dr. D. E. Magee, Jr.
Jackson

Mr. Bob Owens
Jackson

Mr. H. Ed Blakeslee
Gulfport

Mr. Aubrey Patterson
Tupelo

Mr. Thomas W. Colbert
Brandon

Ms. Robin J. Robinson
Laurel

Dr. Stacy Davidson, Jr.
President, Cleveland

Mr. Scott Ross
West Point

Mr. Roy Estess
Carriere

Ms. Amy Whitten
Vice President, Oxford

Dr. Thomas Meredith, Commissioner of Higher Education

*3825 Ridgewood Road
Jackson, MS 39211-6453
(601) 432-6623 [phone]
(601) 432-6972 [fax]*

DELTA STATE UNIVERSITY
PRESIDENT'S CABINET & ACADEMIC COUNCIL
2007-2008

Cabinet

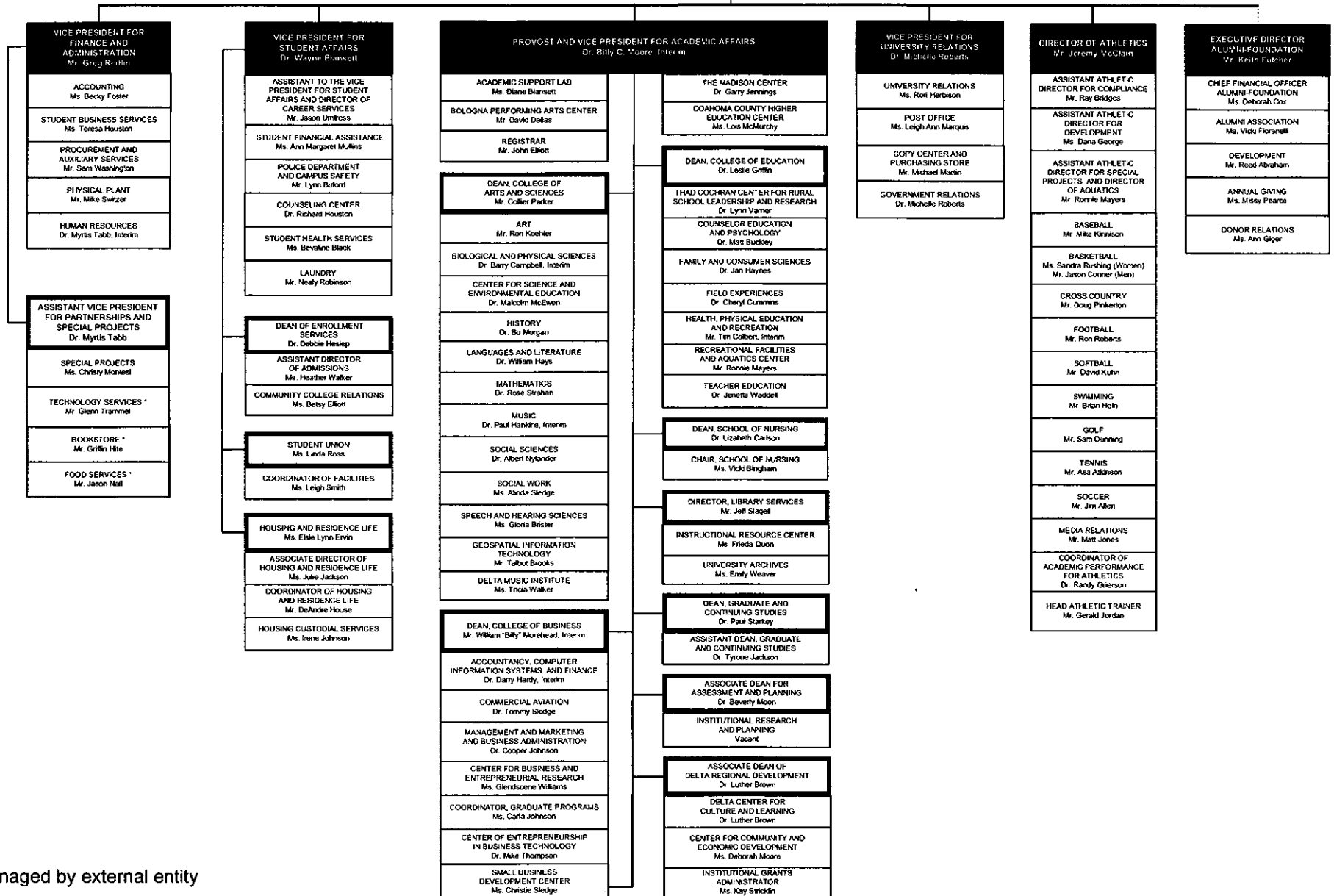
John M. Hilpert, Ph.D.	President
H. Wayne Blansett, Ed.D.	Vice President, Student Affairs
Phyllis Bunn, Ph.D.	Faculty Senate President
Keith Fulcher, M.Ed.	Executive Director, Alumni-Foundation
Jeremy McClain, M.B.A	Director, Athletics
Ann Lotven, Ph.D.	Provost and Vice President, Academic Affairs
Greg Redlin, M.B.A.	Vice President, Finance and Administration
Michelle Roberts, Ed.D.	Vice President, University Relations
Jeff Slagell, M.A.	Academic Council Representative
Myrtis S. Tabb, Ed.D.	Assistant Vice President, Partnerships & Special Projects

Academic Council

Luther Brown, Ph.D.	Associate Dean, Delta Regional Development
Phyllis Bunn, Ph.D.	Faculty Senate President
Lizabeth L. Carlson, D.S.N.	Dean, School of Nursing
Leslie Griffin, Ed.D.	Dean, College of Education
Debbie Heslep, Ed.D.	Dean, Enrollment Management/Director, Admissions
Tyrone Jackson, Ph.D.	Interim Dean, Division of Graduate and Continuing Studies
Beverly Moon, Ph.D.	Associate Dean, Assessment and Planning
Billy C. Moore, Ph.D.	Dean, College of Business
Collier Parker, M.F.A.	Dean, College of Arts and Sciences
Jeff Slagell, M.A.	Director, Library Services
Paul Starkey, Ph.D.	Center for Entrepreneurship in Business Technology

BOARD OF TRUSTEES
Institutions of Higher Learning
(Commissioner: Dr. Thomas Meredith)

PRESIDENT
Dr. John Hilpert



* Managed by external entity

DELTA STATE UNIVERSITY

HISTORICAL SKETCH

Delta State University was created as Delta State Teachers College by Senate Bill Number 263, Chapter 284, entitled An Act to Create and Establish the Delta State Teachers College. Governor Henry L. Whitfield signed the bill on April 9, 1924. Cleveland and Bolivar County provided the College's first physical facilities in the form of three buildings that formerly housed the Bolivar County Agricultural High School. The institution opened for its first regular session on September 15, 1925, with a faculty and staff of eleven and a student body of ninety-seven.

The College's first president, Mr. James Wesley Broom, died during Delta State's first session. He was succeeded by Dr. W. M. Kethley, who served as president from 1926 to 1956. Dr. James M. Ewing became the third president on September 1, 1956, and served until his retirement on July 31, 1971. Dr. Aubrey K. Lucas served as the institution's fourth president from August 1, 1971, until June 30, 1975. On July 1, 1975, Dr. Forest Kent Wyatt became the fifth president, and he served until his retirement on June 30, 1999. He was succeeded by Dr. David L. Potter on July 1, 1999, who served as sixth president until March 9, 2003. Dr. John M. Hilpert became Delta State University's seventh president on September 1, 2003.

The growth and expanding mission of the institution are evidenced by its name change in 1955 to Delta State College. In 1969 Delta State was authorized to reorganize its academic structure into four schools. The School of Arts and Sciences and the School of Business were activated in 1969 and the School of Education and School of Graduate Studies were implemented in 1970. A School of Nursing was authorized in 1977 and began operation in 1978. On March 15, 1974, the institution was officially designated Delta State University to reflect its continued growth and expanded scope.

When created in 1925, Delta State was authorized to offer only the Bachelor of Science degree in Education. The first such degrees were conferred in June 1928. Undergraduate degrees are now offered in the arts, sciences, humanities, business, nursing, commercial aviation and education.

In 1965, the University initiated a graduate program and the first Master of Education degrees were conferred in May, 1966. Delta State University now offers Master's degrees in the areas of business, commercial aviation, education, natural and social sciences, and nursing, as well as the Educational Specialist degree and Doctor of Education in professional studies.

From a small teacher-training institution in the 1920's, Delta State has grown into a multi-purpose university which focuses strongly on high quality classroom instruction. Enrollment has increased to more than 4,000 students, and corresponding growth has occurred in physical facilities. The growth and success of the University are tributes to the dedication of the faculty and staff, the hard work of the students, and the strong support of the Delta community and state legislature.

DELTA STATE UNIVERSITY

VISION & MISSION

Vision

Students at Delta State University will learn and grow in an environment that fosters discovery and creativity. The institution intends to be the best regional university in America as it combines a heritage of academic strength with a robust commitment to serving people and communities, particularly in the Mississippi Delta.

Institutional Mission

As a regional Carnegie Master's I university located in Cleveland, Mississippi, Delta State University serves as an educational and cultural center of the Mississippi Delta, emphasizing service to the Northern Delta Counties and its campus centers in Clarksdale and Greenville. The University offers undergraduate, graduate, and continuing education programs of study leading to baccalaureate and master's degrees in the Colleges of Arts and Sciences, Business, Education, and the School of Nursing, as well as a Doctorate in Education. Emphasis is placed on excellence in instruction, followed by service and research, in the creation of a community of scholars.

With special attention to small classes, a friendly environment, and a broad liberal arts foundation, the University encourages significant student-faculty interactions. Delta State provides programs and services which promote intellectual, cultural, ethical, physical, and social development. Students from different cultural, socioeconomic, and ethnic backgrounds will develop the ability to respect and evaluate the thoughts of others; to develop, assess, and express their own thoughts effectively; and to use the techniques of research and performance associated with their disciplines.

Approved by the Board of Trustees of State Institutions of Higher Learning, March 18, 2004.

DELTA STATE UNIVERSITY

GUIDING PRINCIPLES

COMMITMENT TO QUALITY IN ACADEMIC PROGRAMS

Acknowledging its beginnings as a teacher's college, the University sustains excellence in teacher education while also continuing to expand offerings in traditional as well as new areas of study. From the core disciplines such as arts, humanities, and sciences to unique programs such as commercial aviation and community development, the University is committed to meeting the ever-changing and evolving needs of the students it serves. It sustains quality in those programs by maintaining accreditation of all programs for which an accrediting agency exists.

COMMITMENT TO LEARNING, SCHOLARSHIP & STUDENT ENGAGEMENT

Delta State provides programs that cultivate intellectual curiosity and promote scholarship among its students. Through a state-of-the-art library supplemented by a campus network of computer labs, students have access to a full range of information resources in support of learning. The University also acknowledges the importance of student engagement as central to successful learning. Toward that end the University has dedicated its quality enhancement plan as required for regional accreditation to increased student engagement. In support of community engagement and service-learning experiences for students, the University has created an office and a faculty role to sustain those efforts.

SUPPORT FOR THE ARTS

Delta State recognizes the need for a vibrant creative and performing arts program for its students and the region. The renovation of Jobe Hall provides a state-of-the-art theatre facility for student productions. Through the Bologna Performing Arts Center, the Delta Music Institute, the Janice Wyatt Summer Arts Institute, and a partnership with the Delta Arts Alliance, the University ensures the preservation and enhancement of the arts throughout the region.

ENCOURAGEMENT OF INNOVATION & EXPERIMENTATION

Delta State endorses the principles of innovation and experimentation, and makes them a part of its institutional culture. The University acknowledges the importance of an environment where students and faculty can undertake risks and experiment with new ideas.

RESPECT FOR PEOPLE & IDEAS

Delta State promotes mutual respect, teamwork, fairness, and integrity. The University is diligent in working to create a climate where students, employees, and constituents are valued and nurtured. Through an ongoing re-engineering project the University converts these principles into

COMMITMENT TO A STUDENT-CENTERED CAMPUS

Delta State promotes a campus culture that fosters student development. From an array of student services to a nationally recognized athletic program, the University is dedicated to ensuring that the full range of student needs and interests are met.

COMMITMENT TO INSTITUTIONAL EFFECTIVENESS

Delta State acknowledges its role as a public institution funded largely by the citizens of Mississippi. In recognition of that public trust, the University is committed to high standards of excellence with appropriate emphasis on effectiveness and productivity.

DELTA STATE UNIVERSITY

GUIDING PRINCIPLES

COMMITMENT TO REGIONAL & ECONOMIC DEVELOPMENT

Delta State, in partnership with various organizations, will advance community and economic development in the Delta region to improve the quality of life and raise the educational level of its citizens. Special attention is given to collaboration with our educational partners: Mississippi Valley State University, Coahoma Community College, Mississippi Delta Community College, the Mississippi Department of Education, and the K-12 schools of the Delta. Moreover, the Delta Center for Culture and Learning, the Capps Archives, the Center for Business Research, and the Center for Community and Economic Development provide a structure to ensure University participation in promoting and celebrating the unique heritage of the Delta while also addressing the longstanding social, economic, and cultural challenges that inhibit advancement.

COMMITMENT TO LEADERSHIP

Delta State is actively involved in providing programs that train leaders for the twenty-first century. Through partnerships with the Kellogg Foundation, Delta Council, the Delta Regional Authority, and other Delta organizations committed to advancement in the region, the University is confident it can make a difference in the quality and training of the leaders who will serve on behalf of future generations.

COMMITMENT TO TEACHING & FACULTY DEVELOPMENT

The quality of Delta State's academic programs is central to its educational mission. That quality is affirmed through a dedicated faculty with credentials appropriate to their discipline. The University supports high standards of quality among its faculty and maintains those standards through the Technology Learning Center, a modern faculty development office dedicated to the application of technology to teaching, and through the Kent and Janice Wyatt Faculty Development Program, a University Foundation initiative that provides resources for faculty growth.

COMMITMENT TO HEALTH

Delta State acknowledges the importance of physical health for its students and the region and extends its resources in support of that goal. Through undergraduate and graduate programs in nursing and pre-professional programs in the sciences, the University provides health care practitioners to serve the State. The University works as the leading partner in the Delta Health Alliance, a collaborative effort with other Delta stakeholders that conducts research and provides education on the health care needs of the region.

UNIVERSITY CHARACTERISTICS

Location

Delta State University is located in Cleveland, Mississippi, in the heart of the Mississippi Delta. The campus consists of 331.54 acres of land within or adjoining the western corporate limits. Cleveland is considered a rural city with a population of 12,447 and is situated in Bolivar County, which has a population of 37,635. The nearest urban city is 110 miles north in Memphis, TN. The nearest international airport is also located in Memphis. Regional airport facilities are located in Greenville, MS which is 40 miles southwest of Cleveland, and the nearest municipal airport is located within Cleveland's city limits.

Academic Year

The University operates on the semester system with the fall semester beginning in late August and ending before Christmas. The spring semester begins in January and ends in May. There are two five-week summer sessions.

Enrollment

The total on-campus enrollment for Fall 2007 was 4,091. The total off-campus enrollment for Fall 2007 was 353: 135 in Greenville, 218 in other locations. Students came from 36 states and 14 foreign countries.

Student Fees

Tuition and fees for Mississippi residents are \$2,124 and for non-residents \$3,005 per semester. An average room fee is \$1,458 and average board fee is \$2,250 per semester.

Student Characteristics

Average age of Freshmen - 18
Average age of Undergraduates - 25
FTE Student/Faculty ratio - 16 to 1
Retention Rate: 60%

Housing

The University has 14 residence halls with a capacity of 1,502. There are eight national fraternities and six national sororities. Approximately 16% of the undergraduate men are members of a fraternity and 16% of the women are members of a sorority.

Athletics

The University is a member of the National Collegiate Athletic Association (NCAA) at the Division II level. Approximately 11% of the undergraduate student population is athletes.

Accreditation

Delta State University is accredited by the Commission on Colleges of the Southern Association of Colleges and Schools to award bachelors, masters, specialists and doctoral degrees.

Degrees

The University offers 16 Bachelor's degrees, eight Master's degrees, one Specialist degree and one Doctoral degree. In 2007-08, DSU awarded 635 bachelor's degrees, 191 master's, 21 specialist's, and 5 doctoral.

Library

The Roberts-LaForge Library collections consist of 365,123 bound volumes and U.S. government documents combined 831,950 microforms, and 1,249 subscriptions.

Fine Arts

The Fielding Wright Art Center houses the art department and contains three galleries for hanging exhibitions. The Holcombe-Norwood addition to the art center was opened in Fall, 1994 and the Bologna Performing Arts Center was completed in Spring, 1995.

Computer Labs

Ewing Hall	24 microcomputers
Walters Hall	44 microcomputers
Nursing	22 microcomputers
Broom Hall	60 microcomputers
Library	56 microcomputers
Music	16 microcomputers
Art	36 microcomputers

NEW STUDENTS



Delta State University

DELTA STATE UNIVERSITY
 NEW STUDENT APPLICATIONS, ADMISSIONS, AND ENROLLMENTS
 FALL 2007

	Number of Applications Received																			
	Freshman		CC-Transfer		SC-Transfer		Re-admitted		APT Student		Non-Form/Over 21		Audit		Senior Citizen		Total Under-graduates	Graduates	University Total*	
	#	%	#	%	#	%	#	%	#	%	#	%	#	%	#	%	#	#	#	
In-State	1,632	82%	873	96%	287	78%	222	97%	131	95%	34	85%	1	50%	22	100%	3,202	576	3,778	
Out-of-State	352	18%	38	4%	81	22%	6	3%	7	5%	6	15%	1	50%	0	0%	491	71	562	
Male	759	38%	278	31%	111	30%	51	22%	45	33%	14	35%	1	50%	4	18%	1,263	148	1,411	
Female	1,225	62%	633	69%	257	70%	177	78%	93	67%	26	65%	1	50%	18	82%	2,430	497	2,927	
White	817	41%	333	37%	110	30%	82	36%	135	98%	23	58%	1	50%	19	86%	1,520	206	1,726	
Black	1,104	56%	562	62%	248	67%	142	62%	0	0%	17	43%	1	50%	1	5%	2,075	393	2,468	
Other	63	3%	16	2%	10	3%	4	2%	3	2%	0	0%	0	0%	2	9%	98	48	146	
TOTAL	1,984	100.0%	911	100.0%	368	100.0%	228	100%	138	100%	40	100%	2	100%	22	100%	3,693	647	4,340	

*University Total is duplicated

Source: DSU Admissions & Office of Institutional Research & Planning

DELTA STATE UNIVERSITY
DISTRIBUTION OF ACT COMPOSITE SCORES
ON CAMPUS FIRST-TIME ENTERING FRESHMEN

ACT Score	Fall 2003-04		Fall 2007-08		Percent change
	DSU	Total for All Mississippi 4-year Universities	DSU	Total for All Mississippi 4-year Universities	DSU
36	N/A	N/A	0	1	N/A
35	0	10	0	7	0%
34	0	20	0	22	0%
33	0	45	0	46	0%
32	1	69	0	104	0%
31	2	112	1	135	-50%
30	2	178	4	196	100%
29	5	218	6	232	20%
28	5	272	9	292	80%
27	8	266	12	303	50%
26	11	347	22	418	100%
25	18	366	10	425	-44%
24	17	432	20	611	18%
23	9	458	30	553	233%
22	34	571	27	609	-21%
21	28	632	43	714	54%
20	22	649	43	768	95%
19	43	674	60	815	40%
18	48	769	84	862	75%
17	46	639	53	665	15%
16	23	503	39	533	70%
15	2	158	8	176	300%
14	2	72	3	97	50%
13	1	40	2	52	100%
12	0	15	1	22	N/A
11	0	6	0	7	0%
10	0	1	0	1	0%
9	0	1	0	0	0%
8	0	1	0	0	0%
Total	327	7,524	477	8,666	46%
Mean Score	20.4	21.6	20.2	21.6	-1%

Source: DSU Office of Institutional Research & Planning

Date: July 2008

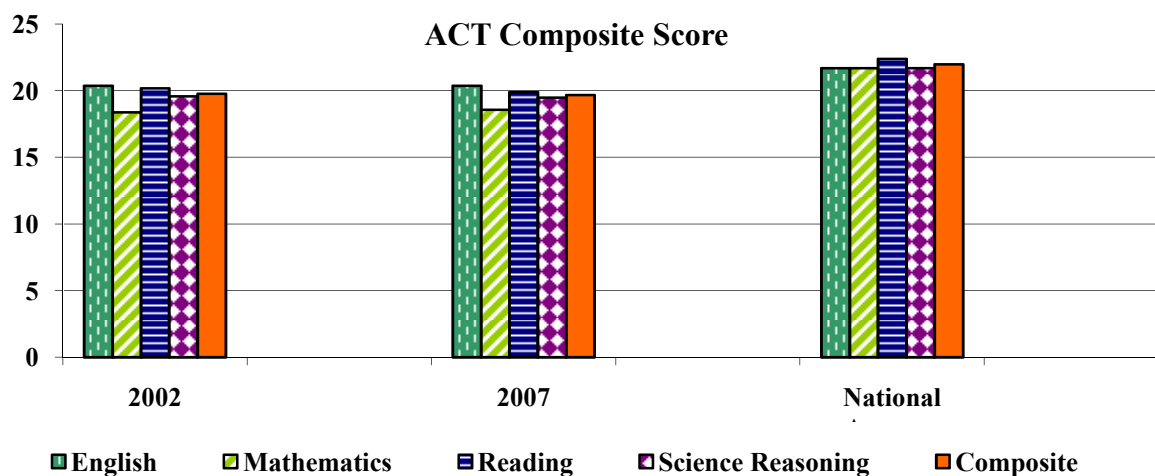
DELTA STATE UNIVERSITY
ACT DATA FOR ENTERING FRESHMEN
 2007-2008

ACT Composite Score	2002	2007	National Average
English	20.4	20.4	21.7
Mathematics	18.4	18.6	21.7
Reading	20.2	19.9	22.4
Science Reasoning	19.6	19.5	21.7
Composite	19.8	19.7	22.0
High School GPA	2002	2007	National Average
English	3.21	3.20	3.39
Mathematics	2.97	3.06	3.22
Social Studies	3.32	3.37	3.47
Natural Sciences	3.14	3.20	3.31
Average of grades	3.17	3.21	3.34

Reference Score Value	English	Math	Reading	Science Reasoning	Composite*
Seventy-fifth percentile	23.3	20.8	22.8	21.6	21.7
Median	20.0	17.5	19.3	19.3	19.0
Twenty-fifth percentile	17.1	15.9	16.4	17.5	17.2
Overall mean	20.4	18.6	19.9	19.5	19.7
Standard deviation	4.5	3.7	4.8	3.5	3.5

Source: ACT Class Profile Report: Freshmen Class 07-08

*Composite scores reported from 06-07 national average normative data



Source: DSU Office of Institutional Research & Planning

Date: July 2008

DELTA STATE UNIVERSITY
MAJOR FEEDER HIGH SCHOOLS FOR ACT TESTED FRESHMEN
FRESHMEN CLASS 2007-2008

High School	Location	Enrolled	
		Number	AVG.ACT
Cleveland High School	Cleveland	31	20.9
Greenville-Weston-HS-GHS	Greenville	18	17.5
Grenada High School	Grenada	17	21.9
Gentry High School	Indianola	11	18.3
West Bolivar District High School	Rosedale	9	17.4
North Delta School	Batesville	8	19.6
Lee Academy	Clarksdale	8	20.1
Washington School	Greenville	8	17.6
Ruleville Central High School	Ruleville	8	18.1
Riverside High School	Avon	7	21.6
South Panola High School	Batesville	7	17.7
Hernando High School	Hernando	7	25
Shaw High School	Shaw	7	20
Clarksdale High School	Clarksdale	6	17
Coffeerville High School	Coffeerville	6	18.7
Bayou Academy	Cleveland	6	21.5
Desoto Central High School	Southaven	6	20.5
Southaven High School	Southaven	6	21.2
Eastside High School	Cleveland	5	17.4
Drew High School	Drew	5	19.8
Simmons High School	Hollandale	5	16.6
Kossuth High School	Kossuth	5	18.4
West Tallahatchie High School	Webb	5	17.2
Yazoo County High School	Yazoo City	4	19.8
Brandon High School	Brandon	4	21.8
Strider Academy	Charleston	4	18.5
Pillow Academy	Greenwood	4	20.5
Horn Lake High School	Horn Lake	4	21.5
John F Kennedy MEML High School	Mound Bayou	4	18.5
South Delta High School	Rolling Fork	4	19.8
Other In-State High Schools	Other	139	20.3
Other Out-of-State High Schools	Out of State	44	19.9
Invalid High School or no High School code given	Invalid	39	18.3
TOTAL		451	19.48

Source: DSU Office of Institutional Research & Planning

Date: July 2008

ENROLLMENT

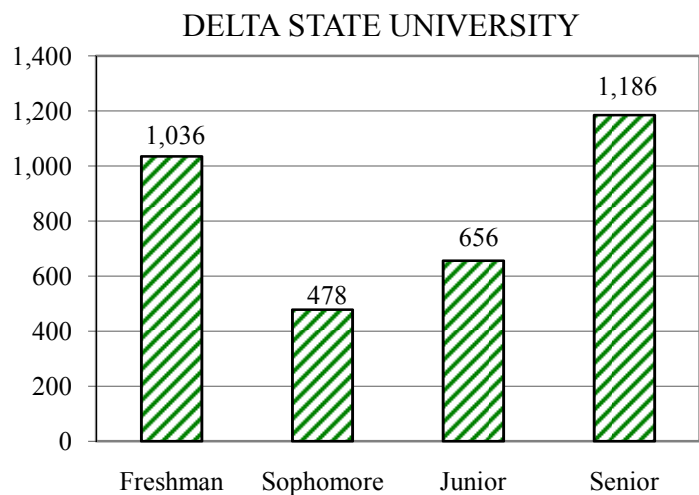
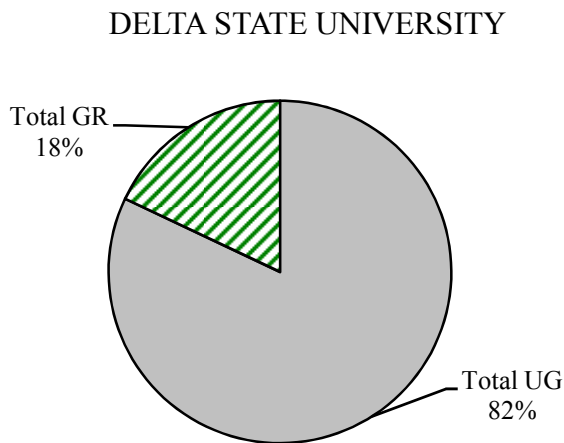


Delta State University

DELTA STATE UNIVERSITY
ON-CAMPUS ENROLLMENT OF MS INSTITUTIONS BY LEVEL
FALL 2007

INSTITUTION	Freshman	Sophomore	Junior	Senior	Total UG	Total GR	TOTAL
Alcorn State University	989	557	585	873	3,004	664	3,668
DELTA STATE UNIVERSITY	1,036	478	656	1,186	3,356	735	4,091
Jackson State University	2,079	1,312	1,285	2,147	6,823	1,875	8,698
MS State University	3,182	2,382	2,990	4,654	13,208	3,831	17,039
MS University for Women	582	301	529	810	2,222	157	2,379
MS Valley State University	857	515	534	671	2,577	432	3,009
University of Mississippi*	3,644	2,323	3,079	4,191	13,237	4,086	17,323
University of Southern MS	2,369	1,918	2,763	4,874	11,924	2,668	14,592
TOTAL	14,738	9,786	12,421	19,406	56,351	14,448	70,799

* Includes the University of Mississippi Medical Center



Source: IHL Fall 2007-08 Enrollment Factbook/DSU Office of Institutional Research & Planning
 Date: July 2008

DELTA STATE UNIVERSITY

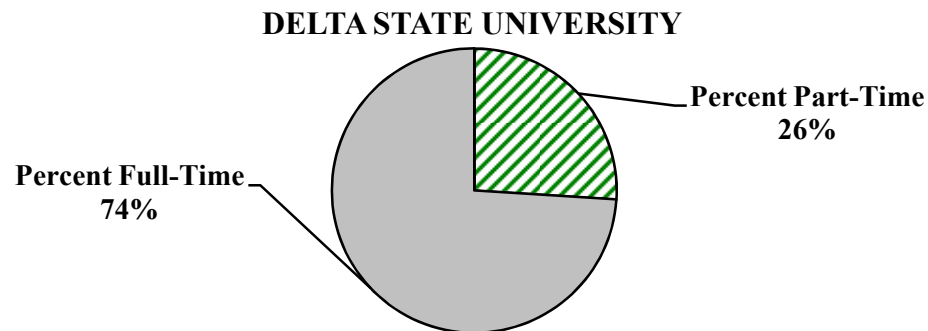
TOTAL ON-CAMPUS ENROLLMENT OF MS INSTITUTIONS BY HEADCOUNT AND FULL-TIME EQUIVALENT FALL 2007

INSTITUTION	HEADCOUNT				FULL-TIME EQUIVALENT				
	Full-Time	Part-Time	Total	Percent Part-Time	Lower*	Upper*	Graduate**	Total	FTE Percent of Headcount
Alcorn State University	2,873	795	3,668	21.7%	1,522.4	1,371.3	365.5	3,259.2	88.9%
DELTA STATE UNIVERSITY	3,025	1,066	4,091	26.1%	1,262.4	1,682.8	420.5	3,365.7	82.3%
Jackson State University	6,653	2,045	8,698	23.5%	3,199.6	3,083.3	1,117.2	7,400.1	85.1%
MS State University	13,677	3,362	17,039	19.7%	5,293.2	6,735.4	2,468.3	14,496.9	85.1%
MS University for Women	1,734	645	2,379	27.1%	694.6	1,129.5	96.5	1,920.6	80.7%
MS Valley State University	2,387	622	3,009	20.7%	1,292.1	1,080.9	231.5	2,604.5	86.6%
University of Mississippi***	15,444	1,879	17,323	10.8%	5,629.3	6,478.0	3,668.0	15,775.3	91.1%
University of Southern MS	11,553	3,039	14,592	20.8%	4,119.8	6,729.9	1,780.4	12,630.1	86.6%
TOTAL	57,346	13,453	70,799	19.0%	23,013.4	28,291.1	10,147.9	61,452.4	86.8%

*Undergraduate "FTE" is calculated by dividing total undergraduae semester credit hours by 15.

** Graduate "FTE" is calculated by dividing total graduate semester credit hours by 12.

*** Includes the University of Mississippi Medical Center. Students enrolled in health professional programs are all considered full-time.



Source: IHL Fall 2007-08 Enrollment Factbook/DSU Office of Institutional Research & Planning

Date: July 2008

DELTA STATE UNIVERSITY
ON-CAMPUS ENROLLMENT OF STUDENTS BY CLASS
10-YEAR TREND

FALL SEMESTER	FRESHMAN		SOPHOMORE		JUNIOR		SENIOR		GRADUATE		TOTAL	
	#	%	#	%	#	%	#	%	#	%	#	%
1997	864	22%	573	14%	856	22%	1,129	28%	547	14%	3,969	100%
1998	895	23%	570	15%	843	21%	1,132	29%	491	12%	3,931	100%
1999	937	24%	554	14%	831	21%	1,108	28%	528	13%	3,958	100%
2000	899	24%	530	14%	794	21%	1,060	28%	499	13%	3,782	100%
2001	932	25%	524	14%	787	21%	1,049	28%	454	12%	3,746	100%
2002	842	22%	520	14%	804	21%	1,052	28%	607	16%	3,825	100%
2003	772	20%	529	14%	795	21%	1,060	28%	629	17%	3,785	100%
2004	848	22%	479	12%	767	20%	1,054	27%	705	18%	3,853	100%
2005	879	22%	520	13%	760	19%	1,099	27%	740	19%	3,998	100%
2006	870	22%	536	13%	775	19%	1,133	28%	730	18%	4,044	100%
2007	1,036	25%	478	12%	656	16%	1,186	29%	735	18%	4,091	100%
10-YEAR CHANGE	172	4%	-95	-3%	-200	-6%	57	1%	188	4%	122	3%

Source: IHL Statistical Report/DSU Office of Institutional Research & Planning

Date: July 2008

DELTA STATE UNIVERSITY
ON-CAMPUS ENROLLMENT OF STUDENTS BY STATUS
10-YEAR TREND

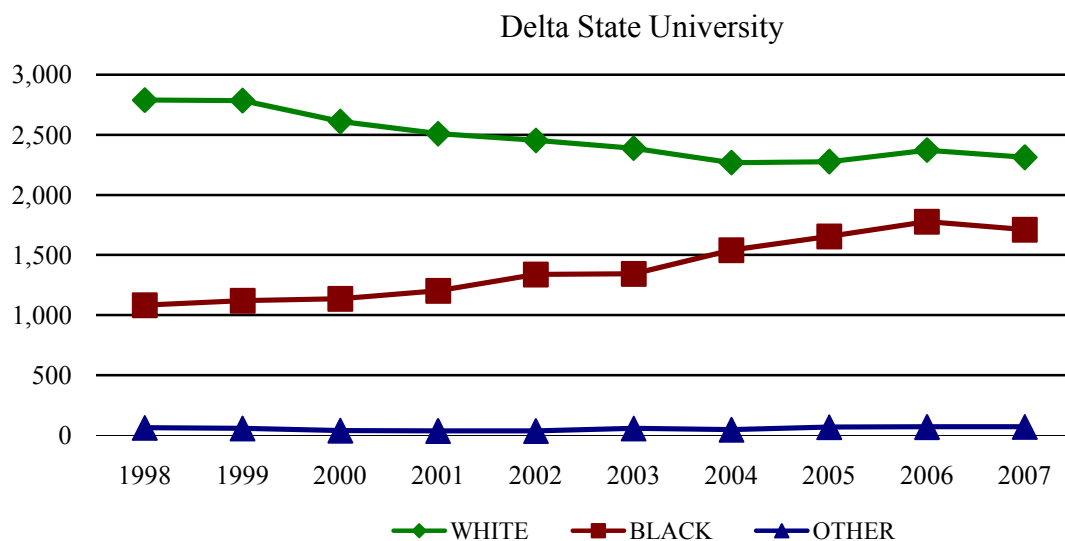
FALL SEMESTER	FULL-TIME		PART-TIME		TOTAL	
	Students	Percent	Students	Percent	Students	Percent
1998	2,967	75%	964	25%	3,931	100%
1999	3,067	77%	891	23%	3,958	100%
2000	2,914	77%	868	23%	3,782	100%
2001	3,013	80%	733	20%	3,746	100%
2002	2,791	73%	1,034	27%	3,825	100%
2003	2,754	73%	1,031	27%	3,785	100%
2004	2,913	76%	940	24%	3,853	100%
2005	3,000	75%	998	25%	3,998	100%
2006	3,122	74%	1,095	26%	4,217	100%
2007	3,025	74%	1,066	26%	4,091	100%
10-YEAR CHANGE	58	-2%	102	2%	160	4%

Source: IHL Statistical Report/DSU Office of Institutional Research & Planning

Date: July 2008

DELTA STATE UNIVERSITY
ON-CAMPUS ENROLLMENT OF STUDENTS BY RACE
10-YEAR TREND

FALL SEMESTER	WHITE		BLACK		OTHER		TOTAL	
	#	%	#	%	#	%	#	%
1998	2,788	71%	1,081	27%	62	2%	3,931	100%
1999	2,784	70%	1,118	28%	56	1%	3,958	100%
2000	2,610	69%	1,133	30%	39	1%	3,782	100%
2001	2,509	67%	1,201	32%	36	1%	3,746	100%
2002	2,453	64%	1,336	35%	36	1%	3,825	100%
2003	2,387	63%	1,342	35%	56	1%	3,785	100%
2004	2,268	59%	1,539	40%	46	1%	3,853	100%
2005	2,277	57%	1,654	41%	67	2%	3,998	100%
2006	2,372	56%	1,776	42%	69	2%	4,217	100%
2007	2,312	57%	1,709	42%	70	2%	4,091	100%
10-YEAR CHANGE	-476	-14%	628	14%	8	0%	160	4%

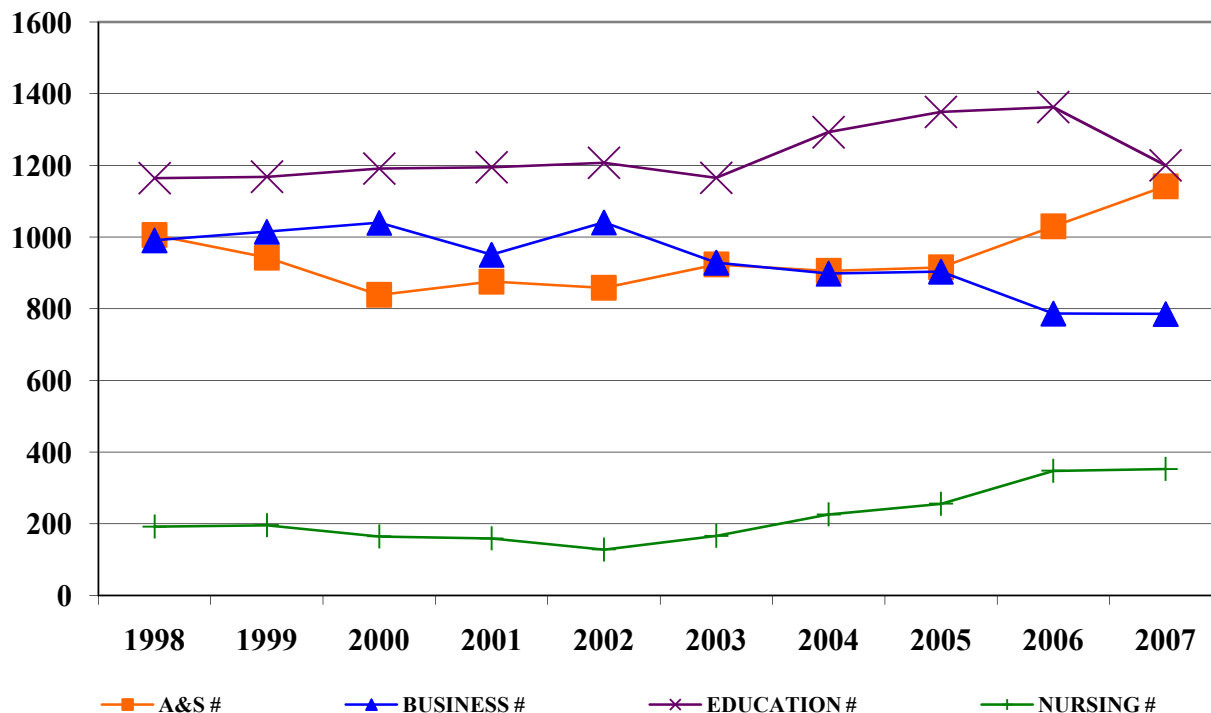


Source: IHL Statistical Report/DSU Office of Institutional Research & Planning
Date: July 2008

DELTA STATE UNIVERSITY
ON-CAMPUS ENROLLMENT OF STUDENTS BY SCHOOL
10-YEAR TREND

FALL SEMESTER	A&S		BUSINESS		EDUCATION		NURSING		TOTAL	
	#	%	#	%	#	%	#	%	#	%
1998	1,006	30%	991	30%	1,165	35%	192	6%	3,354	100%
1999	943	28%	1,015	31%	1,169	35%	196	6%	3,323	100%
2000	839	26%	1,040	32%	1,192	37%	165	5%	3,236	100%
2001	876	28%	951	30%	1,195	38%	159	5%	3,181	100%
2002	859	27%	1,041	32%	1,208	37%	128	4%	3,236	100%
2003	924	29%	929	29%	1,166	37%	166	5%	3,185	100%
2004	906	27%	898	27%	1,293	39%	226	7%	3,323	100%
2005	916	27%	904	26%	1,350	39%	256	7%	3,426	100%
2006	1,030	29%	787	22%	1,363	39%	348	10%	3,528	100%
2007	1,142	33%	786	23%	1,201	34%	353	10%	3,482	100%
10-YEAR CHG.	136	14%	-205	-21%	36	3%	161	84%	128	4%

ON-CAMPUS ENROLLMENT BY SCHOOL



Source: DSU Office of Institutional Research & Planning

Date: July 2008

DELTA STATE UNIVERSITY
TOTAL ENROLLMENT SUMMARY OF STUDENTS BY RACE
FALL 2007

	White		Black		Other		TOTAL	
	#	%	#	%	#	%	#	%
Male	984	68%	421	29%	32	2%	1,437	35%
Female	1,328	50%	1,288	49%	38	1%	2,654	65%
First-Time Freshmen	271	57%	195	41%	11	2%	477	12%
Returning Students	1,196	60%	751	38%	34	2%	1,981	48%
Readmitted Students	74	50%	70	48%	3	2%	147	4%
Transfer Students	229	47%	251	51%	8	2%	488	12%
Returning Graduate Students	308	50%	303	49%	8	1%	619	15%
Transient	1	100%	0	0%	0	0%	1	0%
High School Students	131	98%	1	1%	2	1%	134	3%
Non-Formula Students (over "21")	23	58%	17	43%	0	0%	40	1%
First-Time Graduate Students	79	39%	121	59%	4	2%	204	5%
Full-time	1,662	57%	1,198	41%	48	2%	2,908	71%
Part-time	650	55%	511	43%	22	2%	1,183	29%
In-State	2,072	55%	1,619	43%	53	1%	3,744	92%
Out-of-State	240	69%	90	26%	17	5%	347	8%
TOTAL	2,312	57%	1,709	42%	70	2%	4,091	100%

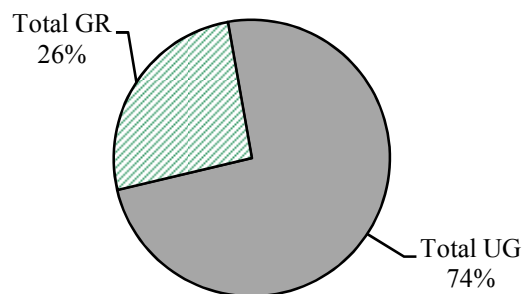
Source: IHL Statistical Report/DSU Office of Institutional Research & Planning

Date: July 2008

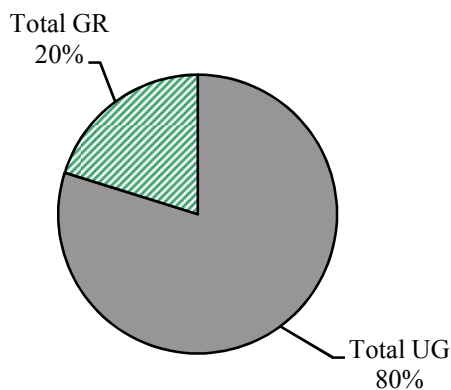
DELTA STATE UNIVERSITY
 OFF-CAMPUS/DUAL CAMPUS DUPLICATED HEADCOUNT ENROLLMENT BY LEVEL
 5-YEAR FALL 2003-2007

Campus	2003-04	2004-05	2005-06	2006-07	2007-08	Percent Change
Greenville						
Freshman	22	13	7	6	6	-73%
Sophomore	6	8	9	9	7	17%
Junior	12	19	34	27	24	100%
Senior	27	62	47	56	63	133%
Total Undergraduate	67	102	97	98	100	49%
Total Graduate	46	59	52	39	35	-24%
Total	113	161	149	137	135	19%
Other Locations						
Freshman	20	9	19	68	124	520%
Sophomore	12	12	5	11	7	-42%
Junior	22	25	11	13	12	-45%
Senior	47	45	46	42	31	-34%
Total Undergraduate	101	91	81	134	174	72%
Total Graduate	35	40	56	87	44	26%
Total	136	131	137	221	218	60%
Grand Total	249	292	286	358	353	42%

Fall 2007 Greenville Campus



Fall 2007 Other Locations



Source: DSU Office of Institutional Research & Planning
 Date: July 2008

DELTA STATE UNIVERSITY
 ON CAMPUS GRADUATE HEADCOUNT ENROLLMENT
 BY ACADEMIC PROGRAM LEVELS & BY FULL-TIME & PART-TIME

	2003-04	2004-05	2005-06	2006-07	2007-08
<u>Master's Program</u>					
Full-time	192	226	224	201	221
Part-time	352	370	404	423	396
Total	544	596	628	624	617
<u>Specialist Program</u>					
Full-time	4	8	12	5	6
Part-time	32	42	37	59	56
Total	36	50	49	64	62
<u>Doctoral Program</u>					
Full-time	8	9	10	5	5
Part-time	41	50	53	37	38
Total	49	59	63	42	43
TOTAL ALL PROGRAMS	629	705	740	730	722

Source: IHL Statistical Report/DSU Office of Institutional Research & Planning

Date: July 2008

DELTA STATE UNIVERSITY
AGE DISTRIBUTION OF STUDENTS BY FULL-TIME AND PART-TIME STATUS
FALL 2007

AGE	FULL-TIME						PART-TIME						UNIVERSITY TOTALS			
	UNDERGRADUATE			GRADUATE			UNDERGRADUATE			GRADUATE			Men	Women	Total	Percent
	Men	Women	Total	Men	Women	Total	Men	Women	Total	Men	Women	Total	Men	Women	Total	Percent
Under 18	3	2	5	0	0	0	30	73	103	0	0	0	33	75	108	2.64%
18-19	267	460	727	0	0	0	16	24	40	0	0	0	283	484	767	18.75%
20-21	361	498	859	0	1	0	6	12	18	0	0	0	367	511	878	21.46%
22-24	335	369	704	34	49	83	33	35	68	6	53	59	408	506	914	22.34%
25-29	98	130	228	18	48	66	31	42	73	18	117	135	165	337	502	12.27%
30-34	21	69	90	8	27	35	10	38	48	13	62	75	52	196	248	6.06%
35-39	12	62	74	4	22	26	5	41	46	17	50	67	38	175	213	5.21%
40-49	7	46	53	9	29	38	7	53	60	20	64	84	43	192	235	5.74%
50-64	4	13	17	3	16	19	11	44	55	12	34	46	30	107	137	3.35%
65 and over	0	0	0	0	0	0	18	70	88	0	0	0	18	70	88	2.15%
Unknown	0	0	0	0	0	0	0	0	0	0	1	1	0	1	1	0.02%
TOTAL	1,108	1,649	2,757	76	192	267	167	432	599	86	381	467	1,437	2,654	4,091	100.00%

Source: DSU Office of Institutional Research & Planning
Date: July 2008

DELTA STATE UNIVERSITY
AGE DISTRIBUTION OF STUDENTS BY LEVEL & ETHNICITY
FALL 2007

AGE	WHITE						BLACK						OTHER						UNIVERSITY TOTALS			
	UNDERGRADUATE			GRADUATE			UNDERGRADUATE			GRADUATE			UNDERGRADUATE			GRADUATE			Men	Women	Total	%
	Men	Women	Total	Men	Women	Total	Men	Women	Total	Men	Women	Total	Men	Women	Total	Men	Women	Total	Men	Women	Total	%
Under 18	30	72	102	0	0	0	2	2	4	0	0	0	1	1	2	0	0	0	33	75	108	2.64%
18-19	208	269	477	0	0	0	68	206	274	0	0	0	7	9	16	0	0	0	283	484	767	18.75%
20-21	262	313	575	0	0	0	98	189	287	0	1	1	7	8	15	0	0	0	367	511	878	21.46%
22-24	232	217	449	24	40	64	129	182	311	16	61	77	7	5	12	0	1	1	408	506	914	22.34%
25-29	83	44	127	21	47	68	41	125	166	14	116	130	5	3	8	1	2	2	165	337	502	12.27%
30-34	21	31	52	9	27	36	8	75	83	10	57	67	2	1	3	2	5	7	52	196	248	6.06%
35-39	10	35	45	13	25	38	7	67	74	8	46	54	0	1	1	0	1	1	38	175	213	5.21%
40-49	11	41	52	22	37	59	3	57	60	7	56	63	0	1	1	0	0	0	43	192	235	5.74%
50-64	8	35	43	13	27	40	7	22	29	2	23	25	0	0	0	0	0	0	30	107	137	3.35%
65 and over	17	67	0	0	0	0	1	3	4	0	0	0	0	0	0	0	0	0	18	70	88	2.15%
Unknown	0	0	0	0	1	1	0	0	0	0	0	0	0	0	0	0	0	0	0	1	1	0.02%
TOTAL	882	1,124	1,922	102	204	306	364	928	1,292	57	360	417	29	29	58	3	9	11	1,437	2,654	4,091	100.00%

Source: DSU Office of Institutional Research & Planning
Date: July 2008

DELTA STATE UNIVERSITY
ACTIVE ENROLLMENT* ANALYSIS SUMMER 2007, FALL 2007, SPRING 2008

<i>Using Course File</i>		Summer 2007		Fall 2007		Spring 2008	
SUBJECT	DATA	TOTAL	Percent by Enrollment	TOTAL	Percent by Enrollment	TOTAL	Percent by Enrollment
Accountancy	Sum of UG	33	82.5%	105	88.2%	88	86.3%
	Sum of GR	7	17.5%	14	11.8%	14	13.7%
	Sum UG & GR	40	100%	119	100%	102	100%
Art	Sum of UG	33	100.0%	132	99.2%	119	99.2%
	Sum of GR	0	0.0%	1	0.8%	1	0.8%
	Sum UG & GR	33	100%	133	100%	120	100%
Athletic Training	Sum of UG	12	100.0%	36	100.0%	33	100.0%
	Sum of GR	0	0.0%	0	0.0%	0	0.0%
	Sum UG & GR	12	100%	36	100%	33	100%
Audiology and Speech Pathology	Sum of UG	31	100.0%	72	100.0%	67	100.0%
	Sum of GR	0	0.0%	0	0.0%	0	0.0%
	Sum UG & GR	31	100%	72	100%	67	100%
Aviation Management	Sum of UG	3	100.0%	16	100.0%	13	100.0%
	Sum of GR	0	0.0%	0	0.0%	0	0.0%
	Sum UG & GR	3	100%	16	100%	13	100%
Biology	Sum of UG	64	100.0%	208	99.5%	188	100.0%
	Sum of GR	0	0.0%	1	0.5%	0	0.0%
	Sum UG & GR	64	100%	209	100%	188	100%
Biology Education	Sum of UG	5	100.0%	9	100.0%	4	100.0%
	Sum of GR	0	0.0%	0	0.0%	0	0.0%
	Sum UG & GR	5	100%	9	100%	4	100%
Business Administration	Sum of UG	0	0.0%	0	0.0%	1	1.3%
	Sum of GR	45	100.0%	71	100.0%	79	98.8%
	Sum UG & GR	45	100%	71	100%	80	100%
Business Education	Sum of UG	0	NA	7	100.0%	5	100.0%
	Sum of GR	0	NA	0	0.0%	0	0.0%
	Sum UG & GR	0	NA	7	100%	5	100%
Chemistry	Sum of UG	7	100.0%	39	100.0%	36	100.0%
	Sum of GR	0	0.0%	0	0.0%	0	0.0%
	Sum UG & GR	7	100%	39	100%	36	100%

DELTA STATE UNIVERSITY
ACTIVE ENROLLMENT* ANALYSIS SUMMER 2007, FALL 2007, SPRING 2008

<i>Using Course File</i>		Summer 2007		Fall 2007		Spring 2008	
SUBJECT	DATA	TOTAL	Percent by Enrollment	TOTAL	Percent by Enrollment	TOTAL	Percent by Enrollment
Chemistry Education	Sum of UG	0	NA	4	100.0%	0	NA
	Sum of GR	0	NA	0	0.0%	0	NA
	Sum UG & GR	0	NA	4	100%	0	NA
Commercial Aviation	Sum of UG	0	0.0%	0	0.0%	0	0.0%
	Sum of GR	20	100.0%	28	100.0%	26	100.0%
	Sum UG & GR	20	100%	28	100%	26	100%
Communication Studies and Theatre Arts	Sum of UG	0	NA	6	100.0%	4	100.0%
	Sum of GR	0	NA	0	0.0%	0	0.0%
	Sum UG & GR	0	NA	6	100%	4	100%
Community Development	Sum of UG	0	0.0%	0	0.0%	0	0.0%
	Sum of GR	6	100.0%	21	100.0%	16	100.0%
	Sum UG & GR	6	100%	21	100%	16	100%
Computer Information Systems	Sum of UG	41	97.6%	100	100.0%	89	100.0%
	Sum of GR	1	2.4%	0	0.0%	0	0.0%
	Sum UG & GR	42	100%	100	100%	89	100%
Counseling	Sum of UG	0	0.0%	0	0.0%	0	0.0%
	Sum of GR	60	100.0%	100	100.0%	100	100.0%
	Sum UG & GR	60	100%	100	100%	100	100%
Criminal Justice	Sum of UG	23	85.2%	103	89.6%	84	85.7%
	Sum of GR	4	14.8%	12	10.4%	14	14.3%
	Sum UG & GR	27	100%	115	100%	98	100%
Educational Administration and Supervision	Sum of UG	0	0.0%	0	0.0%	0	0.0%
	Sum of GR	50	100.0%	62	100.0%	56	100.0%
	Sum UG & GR	50	100%	62	100%	56	100%
Elementary Education	Sum of UG	100	69.0%	312	83.9%	262	78.2%
	Sum of GR	45	31.0%	60	16.1%	73	21.8%
	Sum UG & GR	145	100%	372	100%	335	100%
English	Sum of UG	11	100.0%	31	100.0%	29	100.0%
	Sum of GR	0	0.0%	0	0.0%	0	0.0%
	Sum UG & GR	11	100%	31	100%	29	100%

DELTA STATE UNIVERSITY
ACTIVE ENROLLMENT* ANALYSIS SUMMER 2007, FALL 2007, SPRING 2008

<i>Using Course File</i>		Summer 2007		Fall 2007		Spring 2008	
SUBJECT	DATA	TOTAL	Percent by Enrollment	TOTAL	Percent by Enrollment	TOTAL	Percent by Enrollment
English Education	Sum of UG	8	100.0%	28	93.3%	27	96.4%
	Sum of GR	0	0.0%	2	6.7%	1	3.6%
	Sum UG & GR	8	100%	30	100%	28	100%
Environmental Science	Sum of UG	4	100.0%	20	100.0%	16	100.0%
	Sum of GR	0	0.0%	0	0.0%	0	0.0%
	Sum UG & GR	4	100%	20	100%	16	100%
Family and Consumer Science	Sum of UG	86	100.0%	162	100.0%	148	100.0%
	Sum of GR	0	0.0%	0	0.0%	0	0.0%
	Sum UG & GR	86	100%	162	100%	148	100%
Finance	Sum of UG	5	100.0%	23	100.0%	22	100.0%
	Sum of GR	0	0.0%	0	0.0%	0	0.0%
	Sum UG & GR	5	100%	23	100%	22	100%
Flight Operations	Sum of UG	14	100.0%	55	100.0%	58	100.0%
	Sum of GR	0	0.0%	0	0.0%	0	0.0%
	Sum UG & GR	14	100%	55	100%	58	100%
General Business	Sum of UG	45	100.0%	145	100.0%	130	100.0%
	Sum of GR	0	0.0%	0	0.0%	0	0.0%
	Sum UG & GR	45	100%	145	100%	130	100%
Health, Physical Education and Recreation	Sum of UG	50	74.6%	185	82.2%	155	77.1%
	Sum of GR	17	25.4%	40	17.8%	46	22.9%
	Sum UG & GR	67	100%	225	100%	201	100%
History	Sum of UG	8	100.0%	26	100.0%	27	100.0%
	Sum of GR	0	0.0%	0	0.0%	0	0.0%
	Sum UG & GR	8	100%	26	100%	27	100%
History Education	Sum of UG	0	0.0%	0	NA	0	NA
	Sum of GR	1	100.0%	0	NA	0	NA
	Sum UG & GR	1	100%	0	NA	0	NA
Hospitality Services Management	Sum of UG	8	100.0%	30	100.0%	20	100.0%
	Sum of GR	0	0.0%	0	0.0%	0	0.0%
	Sum UG & GR	8	100%	30	100%	20	100%
Insurance and Real Estate	Sum of UG	14	100.0%	37	100.0%	32	100.0%
	Sum of GR	0	0.0%	0	0.0%	0	0.0%
	Sum UG & GR	14	100%	37	100%	32	100%

DELTA STATE UNIVERSITY
ACTIVE ENROLLMENT* ANALYSIS SUMMER 2007, FALL 2007, SPRING 2008

<i>Using Course File</i>		Summer 2007		Fall 2007		Spring 2008	
SUBJECT	DATA	TOTAL	Percent by Enrollment	TOTAL	Percent by Enrollment	TOTAL	Percent by Enrollment
Interdisciplinary Studies	Sum of UG	24	100.0%	68	100.0%	64	100.0%
	Sum of GR	0	0.0%	0	0.0%	0	0.0%
	Sum UG & GR	24	100%	68	100%	64	100%
Journalism	Sum of UG	0	NA	18	100.0%	16	100.0%
	Sum of GR	0	NA	0	0.0%	0	0.0%
	Sum UG & GR	0	NA	18	100%	16	100%
Management	Sum of UG	47	100.0%	101	100.0%	104	100.0%
	Sum of GR	0	0.0%	0	0.0%	0	0.0%
	Sum UG & GR	47	100%	101	100%	104	100%
Marketing	Sum of UG	12	100.0%	55	100.0%	50	100.0%
	Sum of GR	0	0.0%	0	0.0%	0	0.0%
	Sum UG & GR	12	100%	55	100%	50	100%
Mathematics	Sum of UG	3	100.0%	22	100.0%	19	100.0%
	Sum of GR	0	0.0%	0	0.0%	0	0.0%
	Sum UG & GR	3	100%	22	100%	19	100%
Mathematics Education	Sum of UG	2	100.0%	20	100.0%	18	100.0%
	Sum of GR	0	0.0%	0	0.0%	0	0.0%
	Sum UG & GR	2	100%	20	100%	18	100%
Modern Foreign Languages	Sum of UG	3	100.0%	7	100.0%	7	100.0%
	Sum of GR	0	0.0%	0	0.0%	0	0.0%
	Sum UG & GR	3	100%	7	100%	7	100%
Music	Sum of UG	12	100.0%	47	100.0%	42	100.0%
	Sum of GR	0	0.0%	0	0.0%	0	0.0%
	Sum UG & GR	12	100%	47	100%	42	100%
Music Education	Sum of UG	7	100.0%	35	100.0%	33	100.0%
	Sum of GR	0	0.0%	0	0.0%	0	0.0%
	Sum UG & GR	7	100%	35	100%	33	100%
Natural Science	Sum of UG	0	0.0%	0	0.0%	0	0.0%
	Sum of GR	3	100.0%	5	100.0%	2	100.0%
	Sum UG & GR	3	100%	5	100%	2	100%

DELTA STATE UNIVERSITY
ACTIVE ENROLLMENT* ANALYSIS SUMMER 2007, FALL 2007, SPRING 2008

<i>Using Course File</i>		Summer 2007		Fall 2007		Spring 2008	
SUBJECT	DATA	TOTAL	Percent by Enrollment	TOTAL	Percent by Enrollment	TOTAL	Percent by Enrollment
Nursing	Sum of UG	53	52.5%	125	61.6%	117	59.7%
	Sum of GR	48	47.5%	78	38.4%	79	40.3%
	Sum UG & GR	101	100%	203	100%	196	100%
Office Administration	Sum of UG	0	NA	9	100.0%	6	100.0%
	Sum of GR	0	NA	0	0.0%	0	0.0%
	Sum UG & GR	0	NA	9	100%	6	100%
Political Science	Sum of UG	12	100.0%	36	100.0%	33	100.0%
	Sum of GR	0	0.0%	0	0.0%	0	0.0%
	Sum UG & GR	12	100%	36	100%	33	100%
Pre-BSN Nursing	Sum of UG	0	NA	164	100.0%	126	100.0%
	Sum of GR	0	NA	0	0.0%	0	0.0%
	Sum UG & GR	0	NA	164	100%	126	100%
Professional Studies	Sum of UG	0	0.0%	0	0.0%	0	0.0%
	Sum of GR	20	100.0%	45	100.0%	50	100.0%
	Sum UG & GR	20	100%	45	100%	50	100%
Psychology	Sum of UG	30	100.0%	98	100.0%	73	100.0%
	Sum of GR	0	0.0%	0	0.0%	0	0.0%
	Sum UG & GR	30	100%	98	100%	73	100%
Secondary Education	Sum of UG	0	NA	0	0.0%	0	0.0%
	Sum of GR	0	NA	19	100.0%	20	100.0%
	Sum UG & GR	0	NA	19	100%	20	100%
Social Science	Sum of UG	14	100.0%	34	100.0%	32	100.0%
	Sum of GR	0	0.0%	0	0.0%	0	0.0%
	Sum UG & GR	14	100%	34	100%	32	100%
Social Science Education	Sum of UG	18	100.0%	40	97.6%	34	100.0%
	Sum of GR	0	0.0%	1	2.4%	0	0.0%
	Sum UG & GR	18	100%	41	100%	34	100%
Social Work	Sum of UG	39	100.0%	95	100.0%	93	100.0%
	Sum of GR	0	0.0%	0	0.0%	0	0.0%
	Sum UG & GR	39	100%	95	100%	93	100%

DELTA STATE UNIVERSITY
ACTIVE ENROLLMENT* ANALYSIS SUMMER 2007, FALL 2007, SPRING 2008

<i>Using Course File</i>		Summer 2007		Fall 2007		Spring 2008	
SUBJECT	DATA	TOTAL	Percent by Enrollment	TOTAL	Percent by Enrollment	TOTAL	Percent by Enrollment
Special Education	Sum of UG	4	7.3%	5	6.3%	4	5.3%
	Sum of GR	51	92.7%	75	93.8%	72	94.7%
Sum UG & GR		55	100%	80	100%	76	100%
Teaching (Alternate Route)	Sum of UG	0	NA	0	0.0%	0	NA
	Sum of GR	0	NA	14	100.0%	0	NA
Sum UG & GR		0	NA	14	100%	0	NA
Undeclared	Sum of UG	175	55.7%	486	85.0%	491	83.2%
	Sum of GR	139	44.3%	86	15.0%	99	16.8%
Sum UG & GR		314	100%	572	100%	590	100%
TOTAL SUM OF UG		1,060	67.2%	3,356	82.0%	3,019	80.1%
TOTAL SUM OF GR		517	32.8%	735	18.0%	748	19.9%
TOTAL ENROLLMENT		1,577	100%	4,091	100%	3,767	100%
		1,577		4,091		3,767	

* Active enrollment for each major may vary from departmental advising lists, which will include inactive major students and possibly those who have not correctly changed their majors.

Source: DSU Office of Institutional Research & Planning

CREDIT HOUR PRODUCTION



Delta State University

DELTA STATE UNIVERSITY

CREDIT HOUR* PRODUCTION ANALYSIS SUMMER 2007, FALL 2007, SPRING 2008

<i>Using Course File</i>		Summer 2007		Fall 2007		Spring 2008	
SUBJECT	DATA	TOTAL	Percent by Course Level	TOTAL	Percent by Course Level	TOTAL	Percent by Course Level
ACC	Sum of UG	141	82.5%	1,038	86.5%	896	80.8%
	Sum of GR	30	17.5%	162	13.5%	213	19.2%
	Sum UG & GR	171	100%	1,200	100%	1,109	100%
AED	Sum of UG	0	0.0%	303	61.8%	0	0.0%
	Sum of GR	291	100.0%	187	38.2%	228	100.0%
	Sum UG & GR	291	100%	490	100%	228	100%
AMU	Sum of UG	7	100.0%	3	3.0%	182	98.4%
	Sum of GR	0	0.0%	96	97.0%	3	1.6%
	Sum UG & GR	7	100%	99	100%	185	100%
ANT	Sum of UG	0	NA	96	100.0%	45	100.0%
	Sum of GR	0	NA	0	0.0%	0	0.0%
	Sum UG & GR	0	NA	96	100%	45	100%
AUP	Sum of UG	0	0.0%	0	NA	0	NA
	Sum of GR	3	100.0%	0	NA	0	NA
	Sum UG & GR	3	100%	0	NA	0	NA
ART	Sum of UG	162	94.7%	1,819	99.8%	1,950	100.0%
	Sum of GR	9	5.3%	3	0.2%	0	0.0%
	Sum UG & GR	171	100%	1,822	100%	1,950	100%
BIO	Sum of UG	392	97.0%	2,557	98.9%	2,238	99.9%
	Sum of GR	12	3.0%	28	1.1%	3	0.1%
	Sum UG & GR	404	100%	2,585	100%	2,241	100%
BIS	Sum of UG	45	100.0%	231	100.0%	249	100.0%
	Sum of GR	0	0.0%	0	0.0%	0	0.0%
	Sum UG & GR	45	100%	231	100%	249	100%
CAV	Sum of UG	31	22.3%	819	82.7%	918	87.7%
	Sum of GR	108	77.7%	171	17.3%	129	12.3%
	Sum UG & GR	139	100%	990	100%	1,047	100%
CED	Sum of UG	72	16.1%	177	23.7%	153	21.0%
	Sum of GR	375	83.9%	570	76.3%	576	79.0%
	Sum UG & GR	447	100%	747	100%	729	100%

DELTA STATE UNIVERSITY

CREDIT HOUR* PRODUCTION ANALYSIS SUMMER 2007, FALL 2007, SPRING 2008

<i>Using Course File</i>		Summer 2007		Fall 2007		Spring 2008	
SUBJECT	DATA	TOTAL	Percent by Course Level	TOTAL	Percent by Course Level	TOTAL	Percent by Course Level
CEL	Sum of UG	204	42.5%	1,266	85.6%	1,116	87.9%
	Sum of GR	276	57.5%	213	14.4%	153	12.1%
	Sum UG & GR	480	100%	1,479	100%	1,269	100%
CHE	Sum of UG	219	98.2%	1,033	98.9%	846	100.0%
	Sum of GR	4	1.8%	11	1.1%	0	0.0%
	Sum UG & GR	223	100%	1,044	100%	846	100%
CIS	Sum of UG	273	87.5%	1,821	97.0%	1,524	92.6%
	Sum of GR	39	12.5%	57	3.0%	122	7.4%
	Sum UG & GR	312	100%	1,878	100%	1,646	100%
CML	Sum of UG	21	100.0%	69	67.6%	99	73.3%
	Sum of GR	0	0.0%	33	32.4%	36	26.7%
	Sum UG & GR	21	100%	102	100%	135	100%
COD	Sum of UG	0	0.0%	0	0.0%	0	0.0%
	Sum of GR	48	100.0%	102	100.0%	81	100.0%
	Sum UG & GR	48	100%	102	100%	81	100%
COM	Sum of UG	0	NA	0	NA	450	100.0%
	Sum of GR	0	NA	0	NA	0	0.0%
	Sum UG & GR	0	NA	0	NA	450	100%
CRD	Sum of UG	192	68.1%	351	100.0%	150	65.8%
	Sum of GR	90	31.9%	0	0.0%	78	34.2%
	Sum UG & GR	282	100%	351	100%	228	100%
CRJ	Sum of UG	0	0.0%	654	87.2%	561	83.9%
	Sum of GR	24	100.0%	96	12.8%	108	16.1%
	Sum UG & GR	24	100%	750	100%	669	100%
CSD	Sum of UG	0	0.0%	0	0.0%	0	NA
	Sum of GR	57	100.0%	27	100.0%	0	NA
	Sum UG & GR	57	100%	27	100%	0	NA
CSP	Sum of UG	261	44.8%	441	60.5%	519	63.1%
	Sum of GR	321	55.2%	288	39.5%	303	36.9%
	Sum UG & GR	582	100%	729	100%	822	100%

DELTA STATE UNIVERSITY

CREDIT HOUR* PRODUCTION ANALYSIS SUMMER 2007, FALL 2007, SPRING 2008

<i>Using Course File</i>		Summer 2007		Fall 2007		Spring 2008	
SUBJECT	DATA	TOTAL	Percent by Course Level	TOTAL	Percent by Course Level	TOTAL	Percent by Course Level
CUR	Sum of UG	12	2.5%	466	71.8%	374	56.2%
	Sum of GR	477	97.5%	183	28.2%	291	43.8%
	Sum UG & GR	489	100%	649	100%	665	100%
DMI	Sum of UG	27	100.0%	183	100.0%	222	100.0%
	Sum of GR	0	0.0%	0	0.0%	0	0.0%
	Sum UG & GR	27	100%	183	100%	222	100%
ECO	Sum of UG	141	100.0%	636	95.5%	651	91.9%
	Sum of GR	0	0.0%	30	4.5%	57	8.1%
	Sum UG & GR	141	100%	666	100%	708	100%
EDL	Sum of UG	0	0.0%	0	0.0%	0	0.0%
	Sum of GR	201	100.0%	130	100.0%	169	100.0%
	Sum UG & GR	201	100%	130	100%	169	100%
ELR	Sum of UG	0	0.0%	0	0.0%	0	0.0%
	Sum of GR	258	100.0%	270	100.0%	297	100.0%
	Sum UG & GR	258	100%	270	100%	297	100%
ENG	Sum of UG	588	92.5%	3,864	99.2%	3,327	99.6%
	Sum of GR	48	7.5%	30	0.8%	15	0.4%
	Sum UG & GR	636	100%	3,894	100%	3,342	100%
EPY	Sum of UG	72	32.4%	201	56.3%	234	69.6%
	Sum of GR	150	67.6%	156	43.7%	102	30.4%
	Sum UG & GR	222	100%	357	100%	336	100%
FCS	Sum of UG	385	100.0%	1,521	100.0%	1,913	100.0%
	Sum of GR	0	0.0%	0	0.0%	0	0.0%
	Sum UG & GR	385	100%	1,521	100%	1,913	100%
FIN	Sum of UG	39	59.1%	381	79.9%	336	72.7%
	Sum of GR	27	40.9%	96	20.1%	126	27.3%
	Sum UG & GR	66	100%	477	100%	462	100%
FRE	Sum of UG	0	NA	148	100.0%	132	100.0%
	Sum of GR	0	NA	0	0.0%	0	0.0%
	Sum UG & GR	0	NA	148	100%	132	100%

DELTA STATE UNIVERSITY

CREDIT HOUR* PRODUCTION ANALYSIS SUMMER 2007, FALL 2007, SPRING 2008

<i>Using Course File</i>		Summer 2007		Fall 2007		Spring 2008	
SUBJECT	DATA	TOTAL	Percent by Course Level	TOTAL	Percent by Course Level	TOTAL	Percent by Course Level
GBA	Sum of UG	27	100.0%	741	100.0%	699	100.0%
	Sum of GR	0	0.0%	0	0.0%	0	0.0%
	Sum UG & GR	27	100%	741	100%	699	100%
GEO	Sum of UG	111	100.0%	786	99.6%	606	98.1%
	Sum of GR	0	0.0%	3	0.4%	12	1.9%
	Sum UG & GR	111	100%	789	100%	618	100%
GER	Sum of UG	0	NA	36	100.0%	18	100.0%
	Sum of GR	0	NA	0	0.0%	0	0.0%
	Sum UG & GR	0	NA	36	100%	18	100%
GIS	Sum of UG	24	88.9%	146	96.1%	130	97.7%
	Sum of GR	3	11.1%	6	3.9%	3	2.3%
	Sum UG & GR	27	100%	152	100%	133	100%
GMT	Sum of UG	78	100.0%	90	100.0%	24	100.0%
	Sum of GR	0	0.0%	0	0.0%	0	0.0%
	Sum UG & GR	78	100%	90	100%	24	100%
GST	Sum of UG	0	NA	277	83.7%	14	100.0%
	Sum of GR	0	NA	54	16.3%	0	0.0%
	Sum UG & GR	0	NA	331	100%	14	100%
HIS	Sum of UG	270	100.0%	1,635	96.5%	1,422	97.1%
	Sum of GR	0	0.0%	60	3.5%	42	2.9%
	Sum UG & GR	270	100%	1,695	100%	1,464	100%
HSE	Sum of UG	133	89.9%	657	93.2%	815	96.8%
	Sum of GR	15	10.1%	48	6.8%	27	3.2%
	Sum UG & GR	148	100%	705	100%	842	100%
HSM	Sum of UG	36	100.0%	135	100.0%	96	100.0%
	Sum of GR	0	0.0%	0	0.0%	0	0.0%
	Sum UG & GR	36	100%	135	100%	96	100%
IRR	Sum of UG	0	NA	309	100.0%	330	100.0%
	Sum of GR	0	NA	0	0.0%	0	0.0%
	Sum UG & GR	0	NA	309	100%	330	100%

DELTA STATE UNIVERSITY

CREDIT HOUR* PRODUCTION ANALYSIS SUMMER 2007, FALL 2007, SPRING 2008

<i>Using Course File</i>		Summer 2007		Fall 2007		Spring 2008	
SUBJECT	DATA	TOTAL	Percent by Course Level	TOTAL	Percent by Course Level	TOTAL	Percent by Course Level
JOU	Sum of UG	0	NA	164	100.0%	124	100.0%
	Sum of GR	0	NA	0	0.0%	0	0.0%
	Sum UG & GR	0	NA	164	100%	124	100%
LIB	Sum of UG	4	100.0%	8	100.0%	2	100.0%
	Sum of GR	0	0.0%	0	0.0%	0	0.0%
	Sum UG & GR	4	100%	8	100%	2	100%
MAT	Sum of UG	159	68.8%	2,248	100.0%	1,776	100.0%
	Sum of GR	72	31.2%	0	0.0%	0	0.0%
	Sum UG & GR	231	100%	2,248	100%	1,776	100%
MBA	Sum of UG	0	0.0%	0	0.0%	0	0.0%
	Sum of GR	54	100.0%	9	100.0%	54	100.0%
	Sum UG & GR	54	100%	9	100%	54	100%
MGT	Sum of UG	453	73.3%	1,479	88.2%	1,938	84.4%
	Sum of GR	165	26.7%	198	11.8%	357	15.6%
	Sum UG & GR	618	100%	1,677	100%	2,295	100%
MKT	Sum of UG	192	100.0%	735	83.6%	675	97.8%
	Sum of GR	0	0.0%	144	16.4%	15	2.2%
	Sum UG & GR	192	100%	879	100%	690	100%
MSC	Sum of UG	0	NA	4	100.0%	0	NA
	Sum of GR	0	NA	0	0.0%	0	NA
	Sum UG & GR	0	NA	4	100%	0	NA
MUS	Sum of UG	21	100.0%	1,234	99.6%	1,026	99.5%
	Sum of GR	0	0.0%	5	0.4%	5	0.5%
	Sum UG & GR	21	100%	1,239	100%	1,031	100%
NUR	Sum of UG	292	71.6%	1,048	58.7%	887	56.3%
	Sum of GR	116	28.4%	737	41.3%	689	43.7%
	Sum UG & GR	408	100%	1,785	100%	1,576	100%
OAD	Sum of UG	30	100.0%	0	NA	0	NA
	Sum of GR	0	0.0%	0	NA	0	NA
	Sum UG & GR	30	100%	0	NA	0	NA

DELTA STATE UNIVERSITY

CREDIT HOUR* PRODUCTION ANALYSIS SUMMER 2007, FALL 2007, SPRING 2008

<i>Using Course File</i>		Summer 2007		Fall 2007		Spring 2008	
SUBJECT	DATA	TOTAL	Percent by Course Level	TOTAL	Percent by Course Level	TOTAL	Percent by Course Level
PER	Sum of UG	424	88.1%	2,096	93.4%	1,789	87.1%
	Sum of GR	57	11.9%	148	6.6%	264	12.9%
	Sum UG & GR	481	100%	2,244	100%	2,053	100%
PHI	Sum of UG	3	100.0%	240	100.0%	231	100.0%
	Sum of GR	0	0.0%	0	0.0%	0	0.0%
	Sum UG & GR	3	100%	240	100%	231	100%
PHY	Sum of UG	246	100.0%	557	100.0%	524	100.0%
	Sum of GR	0	0.0%	0	0.0%	0	0.0%
	Sum UG & GR	246	100%	557	100%	524	100%
PSC	Sum of UG	75	100.0%	603	99.0%	522	99.4%
	Sum of GR	0	0.0%	6	1.0%	3	0.6%
	Sum UG & GR	75	100%	609	100%	525	100%
PSY	Sum of UG	267	100.0%	1,416	100.0%	1,421	100.0%
	Sum of GR	0	0.0%	0	0.0%	0	0.0%
	Sum UG & GR	267	100%	1,416	100%	1,421	100%
REM	Sum of UG	12	100.0%	9	75.0%	21	87.5%
	Sum of GR	0	0.0%	3	25.0%	3	12.5%
	Sum UG & GR	12	100%	12	100%	24	100%
RRS	Sum of UG	0	0.0%	0	NA	0	NA
	Sum of GR	84	100.0%	0	NA	0	NA
	Sum UG & GR	84	100%	0	NA	0	NA
SHS	Sum of UG	30	100.0%	744	100.0%	600	100.0%
	Sum of GR	0	0.0%	0	0.0%	0	0.0%
	Sum UG & GR	30	100%	744	100%	600	100%
SOC	Sum of UG	141	78.3%	1,179	96.3%	747	91.9%
	Sum of GR	39	21.7%	45	3.7%	66	8.1%
	Sum UG & GR	180	100%	1,224	100%	813	100%
SPA	Sum of UG	75	100.0%	252	100.0%	252	100.0%
	Sum of GR	0	0.0%	0	0.0%	0	0.0%
	Sum UG & GR	75	100%	252	100%	252	100%

DELTA STATE UNIVERSITY

CREDIT HOUR* PRODUCTION ANALYSIS SUMMER 2007, FALL 2007, SPRING 2008

<i>Using Course File</i>		Summer 2007		Fall 2007		Spring 2008	
SUBJECT	DATA	TOTAL	Percent by Course Level	TOTAL	Percent by Course Level	TOTAL	Percent by Course Level
SPE	Sum of UG	69	100.0%	495	100.0%	0	NA
	Sum of GR	0	0.0%	0	0.0%	0	NA
	Sum UG & GR	69	100%	495	100%	0	NA
SRT	Sum of UG	0	NA	12	100.0%	10	100.0%
	Sum of GR	0	NA	0	0.0%	0	0.0%
	Sum UG & GR	0	NA	12	100%	10	100%
SSC	Sum of UG	18	54.5%	155	73.1%	210	86.4%
	Sum of GR	15	45.5%	57	26.9%	33	13.6%
	Sum UG & GR	33	100%	212	100%	243	100%
SUP	Sum of UG	0	NA	0	0.0%	0	0.0%
	Sum of GR	0	NA	30	100.0%	54	100.0%
	Sum UG & GR	0	NA	30	100%	54	100%
SWO	Sum of UG	291	100.0%	894	100.0%	1,077	100.0%
	Sum of GR	0	0.0%	0	0.0%	0	0.0%
	Sum UG & GR	291	100%	894	100%	1,077	100%
THE	Sum of UG	0	NA	34	100.0%	18	100.0%
	Sum of GR	0	NA	0	0.0%	0	0.0%
	Sum UG & GR	0	NA	34	100%	18	100%
TOTAL SUM OF UG		6,765	66.1%	40,377	89.9%	37,089	88.7%
TOTAL SUM OF GR		3,468	33.9%	4,515	10.1%	4,717	11.3%
TOTAL		10,233	100%	44,892	100%	41,806	100%
TOTAL ENROLLMENT		1,577		4,091		3,767	

Source: Credit Hour Production by Course Level Summer 2007, Fall 2007, Spring 2008

DELTA STATE UNIVERSITY
TOTAL STUDENT CREDIT HOUR SUMMARY BY DISCIPLINE
FALL 2007

LEVEL	UNDERGRADUATE		GRADUATE		TOTAL	
	<i>CHP</i>	<i>Percent</i>	<i>CHP</i>	<i>Percent</i>	<i>CHP</i>	<i>Percent</i>
University Total	40,377	89.9%	4,515	10.1%	44,892	100.0%
Arts & Sciences	22,484	97.8%	512	2.2%	22,996	51.2%
AMU	187	98.4%	3	1.6%	190	0.8%
ANT	96	100.0%	0	0.0%	96	0.4%
ART	1,819	99.8%	3	0.2%	1,822	7.9%
BIO	2,557	98.9%	28	1.1%	2,585	11.2%
BIS	231	100.0%	0	0.0%	231	1.0%
CHE	1,033	98.9%	11	1.1%	1,044	4.5%
COD	0	0.0%	102	100.0%	102	0.4%
CRJ	654	87.2%	96	12.8%	750	3.3%
DMI	183	100.0%	0	0.0%	183	0.8%
ENG	3,864	99.2%	30	0.8%	3,894	16.9%
FRE	148	100.0%	0	0.0%	148	0.6%
GEO	786	99.6%	3	0.4%	789	3.4%
GER	36	100.0%	0	0.0%	36	0.2%
GIS	146	96.1%	6	3.9%	152	0.7%
GST	277	83.7%	54	16.3%	331	1.4%
HIS	1,635	96.5%	60	3.5%	1,695	7.4%
JOU	164	100.0%	0	0.0%	164	0.7%
LIB	8	100.0%	0	0.0%	8	0.0%
MAT	2,248	100.0%	0	0.0%	2,248	9.8%
MSC	4	100.0%	0	0.0%	4	2.1%
MUS	1,234	99.6%	5	0.4%	1,239	5.4%
PHI	240	100.0%	0	0.0%	240	1.0%
PHY	557	100.0%	0	0.0%	557	2.4%
PLS	0	0.0%	0	0.0%	0	0.0%
PSC	603	99.0%	6	1.0%	609	2.6%
REM	9	75.0%	3	25.0%	12	0.1%
SHS	744	100.0%	0	0.0%	744	3.2%
SOC	1,179	96.3%	45	3.7%	1,224	5.3%
SPA	252	100.0%	0	0.0%	252	1.1%
SPE	495	100.0%	0	0.0%	495	2.2%
SRT	12	100.0%	0	0.0%	12	0.1%
SSC	155	73.1%	57	26.9%	212	0.9%
SWO	894	100.0%	0	0.0%	894	3.9%
THE	34	100.0%	0	0.0%	34	0.1%

DELTA STATE UNIVERSITY
TOTAL STUDENT CREDIT HOUR SUMMARY BY DISCIPLINE
FALL 2007 CONT.

LEVEL	UNDERGRADUATE		GRADUATE		TOTAL	
	<i>CHP</i>	<i>Percent</i>	<i>CHP</i>	<i>Percent</i>	<i>CHP</i>	<i>Percent</i>
Business	8,184	90.4%	867	9.6%	9,051	20.2%
ACC	1,038	86.5%	162	13.5%	1,200	13.3%
CAV	819	82.7%	171	17.3%	990	10.9%
CIS	1,821	97.0%	57	3.0%	1,878	20.7%
ECO	636	95.5%	30	4.5%	666	7.4%
FIN	381	79.9%	96	20.1%	477	5.3%
GBA	741	100.0%	0	0.0%	741	8.2%
GMT	90	100.0%	0	0.0%	90	7.5%
HSM	135	100.0%	0	0.0%	135	1.5%
IRR	309	100.0%	0	0.0%	309	3.4%
MBA	0	0.0%	9	100.0%	9	0.8%
MGT	1,479	88.2%	198	11.8%	1,677	18.5%
MKT	735	83.6%	144	16.4%	879	9.7%
OAD	0	0.0%	0	0.0%	0	0.0%
Education	8,661	78.3%	2,399	21.7%	11,060	24.6%
AED	0	0.0%	303	100.0%	303	2.7%
CAD	0	0.0%	0	0.0%	0	0.0%
CED	177	23.7%	570	76.3%	747	6.8%
CEL	1,266	85.6%	213	14.4%	1,479	13.4%
CML	69	67.6%	33	32.4%	102	0.9%
CRD	351	100.0%	0	0.0%	351	3.2%
CSD	0	0.0%	27	100.0%	27	0.2%
CSP	441	60.5%	288	39.5%	729	6.6%
CUR	466	71.8%	183	28.2%	649	5.9%
EDL	0	0.0%	130	100.0%	130	1.2%
ELR	0	0.0%	270	100.0%	270	2.4%
EPY	201	56.3%	156	43.7%	357	3.2%
FCS	1,521	100.0%	0	0.0%	1,521	13.8%
HSE	657	93.2%	48	6.8%	705	6.4%
PER	2,096	93.4%	148	6.6%	2,244	20.3%
PSY	1,416	100.0%	0	0.0%	1,416	12.8%
SUP	0	0.0%	30	100.0%	30	
Nursing	1,048	58.7%	737	41.3%	1,785	4.0%
NUR	1,048	58.7%	737	41.3%	1,785	100.0%

Source: Office of Institutional Research and Planning

Date: July 2008

HOUSING & RESIDENCY



Delta State University

DELTA STATE UNIVERSITY
MEN'S & WOMEN'S RESIDENCE HALLS - COMPARATIVE ROOM REPORT
5-YEAR TREND

	Capacity					
RESIDENCE HALLS	10/1/2007	10/01/03	10/01/04	10/01/05	10/01/06	10/01/07
MEN'S						
Whittington-Williams	115	106	109	99	99	90
Bond-Carpenter	136	79	104	104	75	79
Noel	70	47	42	45	50	47
Brewer	N/A	52	60	56	0	N/A
Clark	70	0	0	0	56	40
Longino	61	0	0	0	29	37
New Men's Hall	177	153	157	160	156	137
TOTALS	629	437	472	464	465	430
Classification						
Freshmen		115	149	157	163	168
Sophomores		111	109	97	91	87
Juniors		102	133	122	131	99
Seniors		88	73	78	74	69
Graduate Students		21	8	10	6	7
TOTALS		437	472	464	465	430
WOMEN'S						
Brewer	65				34	22
Brumby-Castle	193	149	168	158	157	138
Cleveland	82	44	52	47	52	50
Cain-Tatum	112	108	97	88	86	72
Fugler-Hammett	136	97	86	73	91	96
Lawler-Harkins	285	180	218	208	218	205
Ward	N/A	43	42	49	N/A	N/A
TOTALS	873	621	663	623	638	583
Classification						
Freshmen		157	192	195	255	238
Sophomores		154	168	149	118	135
Juniors		184	172	158	164	122
Seniors		116	122	110	95	83
Graduate Students		10	9	11	6	5
TOTALS		621	663	623	638	583
COMBINED MEN & WOMEN						
Freshmen		272	341	352	418	406
Sophomores		265	277	246	209	222
Juniors		286	305	280	295	221
Seniors		204	195	188	169	152
Graduate Students		31	17	21	12	12
TOTALS		1,058	1,135	1,087	1,103	1,013

Source: Housing & Residence Life
Date: July 2008

DELTA STATE UNIVERSITY
ON-CAMPUS ENROLLMENT OF STUDENTS BY MISSISSIPPI COUNTIES
5-YEAR TREND

COUNTIES	FALL 2003	FALL 2004	FALL 2005	FALL 2006	FALL 2007	5-YEAR CHANGE
Adams	10	14	13	8	7	-3
Alcorn	3	6	3	3	9	6
Amite	3	0	2	3	4	1
Attala	9	10	21	13	11	2
Benton	4	3	2	3	4	0
Bolivar	1,132	1,040	1,037	1,130	1,065	-67
Calhoun	8	10	11	10	8	0
Carroll	30	25	22	33	30	0
Chickasaw	6	4	4	7	9	3
Choctaw	4	5	8	6	6	2
Claiborne	2	0	0	0	1	-1
Clarke	3	2	3	5	6	3
Clay	4	5	4	5	5	1
Coahoma	196	200	237	228	222	26
Copiah	8	6	7	12	16	8
Covington	1	4	4	2	3	2
Desoto	105	130	144	132	155	50
Forrest	9	5	9	5	6	-3
Franklin	0	0	2	2	0	0
George	2	2	3	4	5	3
Greene	0	0	0	0	0	0
Grenada	107	99	111	135	127	20
Hancock	0	0	0	0	3	3
Harrison	21	12	13	22	17	-4
Hinds	68	85	70	48	51	-17
Holmes	18	14	20	29	28	10
Humphreys	57	57	63	63	51	-6

DELTA STATE UNIVERSITY
ON-CAMPUS ENROLLMENT OF STUDENTS BY MISSISSIPPI COUNTIES
5-YEAR TREND cont.

COUNTIES	FALL 2003	FALL 2004	FALL 2005	FALL 2006	FALL 2007	5-YEAR CHANGE
Issaquena	9	11	10	7	5	-4
Itawamba	6	2	5	4	6	0
Jackson	12	19	21	20	18	6
Jasper	3	2	3	4	3	0
Jefferson	5	3	5	5	2	-3
Jefferson Davis	2	2	1	2	2	0
Jones	9	5	13	17	10	1
Kemper	3	4	4	1	1	-2
Lafayette	14	20	29	31	26	12
Lamar	3	3	5	3	4	1
Lauderdale	10	15	20	16	13	3
Lawrence	4	4	7	7	3	-1
Leake	6	6	7	3	4	-2
Lee	34	37	36	38	39	5
Leflore	135	142	124	121	136	1
Lincoln	6	8	11	12	13	7
Lowndes	7	9	12	12	10	3
Madison	50	56	62	76	65	15
Marion	1	5	7	3	4	3
Marshall	14	14	13	9	5	-9
Monroe	22	15	15	15	7	-15
Montgomery	17	18	19	24	21	4
Neshoba	7	6	4	3	0	-7
Newton	1	3	4	3	1	0
Noxubee	0	0	1	1	0	0
Oktibbeha	8	5	11	7	13	5
Panola	68	62	65	59	85	17
Pearl River	2	4	5	5	6	4

DELTA STATE UNIVERSITY
ON-CAMPUS ENROLLMENT OF STUDENTS BY MISSISSIPPI COUNTIES
5-YEAR TREND cont.

COUNTIES	FALL 2003	FALL 2004	FALL 2005	FALL 2006	FALL 2007	5-YEAR CHANGE
Perry	1	1	1	1	1	0
Pike	10	12	12	7	7	-3
Pontotoc	10	13	8	9	6	-4
Prentiss	4	2	3	4	6	2
Quitman	42	40	34	35	28	-14
Rankin	55	58	57	58	57	2
Scott	5	8	5	5	4	-1
Sharkey	29	30	32	34	31	2
Simpson	1	2	4	7	7	6
Smith	3	5	4	3	1	-2
Stone	2	4	4	4	4	2
Sunflower	265	265	292	259	274	9
Tallahatchie	68	71	79	90	93	25
Tate	28	39	49	42	43	15
Tippah	5	1	4	2	2	-3
Tishomingo	2	0	2	3	3	1
Tunica	15	14	21	13	20	5
Union	9	9	10	6	6	-3
Walthall	1	3	4	3	0	-1
Warren	38	40	29	31	29	-9
Washington	499	556	567	568	531	32
Wayne	1	3	2	3	1	0
Webster	1	3	2	10	8	7
Wilkinson	4	0	0	0	0	-4
Winston	4	2	1	2	5	1
Yalobusha	27	27	21	26	32	5
Yazoo	36	49	46	41	45	9
TOTALS	3,433	3,475	3,625	3,682	3,595	162

Source: IHL Statistical Report

Date: July 2008

DEGREES



Delta State University

DELTA STATE UNIVERSITY
ACADEMIC PROGRAM INVENTORY
2007-2008

CIP	PROGRAMS	DEGREES	ACCREDITING BODY
52.0301	Accountancy	MPA	
52.0301	Accounting	BBA	ACBSP
50.0101	Art	BA	NASAD & NACATE
50.0101	Art	BFA	NASAD
51.0913	Athletic Training	BS	CAATE
49.0101	Aviation Management	BCA	AABI
26.0101	Biology	BS	
13.1399	Biology Education	BSE	NCATE
52.0201	Business Administration	MBA	ACBSP
40.0501	Chemistry	BS	ACS & NCATE
49.0104	Commercial Aviation	MCA	FAA
44.0201	Community Development	MS	
52.1201	Computer Information Systems	BBA	ACBSP
13.1101	Counseling	MED	CACREP & NCATE
43.0104	Criminal Justice	BSCJ	
43.0104	Criminal Justice	MS	
13.0401	Educational Administration & Supervision	EDS	NCATE & ELCC
13.0401	Educational Administration & Supervision	MED	NCATE & ELCC
13.1202	Elementary Education	EDS	NCATE
13.1202	Elementary Education	MED	NCATE
13.1202	Elementary Education	BSE	NCATE & ACEI
23.0101	English	BA	
13.1305	English Education	BSE	NCATE
30.0101	Environmental Sciences	BS	
19.0101	Family and Consumer Science	BS	AAFCS & CADE
52.0801	Finance	BBA	ACBSP
49.0102	Flight Operations	BCA	AABI
52.0101	General Business	BBA	ACBSP
13.1314	Health, Physical Education & Recreation	BSE	NCATE & NASPE
13.1314	Health, Physical Education & Recreation	BS	
13.1314	Health, Physical Education & Recreation	MED	NCATE

DELTA STATE UNIVERSITY
ACADEMIC PROGRAM INVENTORY
2007-2008 cont.

CIP	PROGRAMS	DEGREES	ACCREDITING BODY
54.0101	History	BSGS	
54.0101	History	BA	
13.1399	History Education	MED	NCATE & NASPE
52.0901	Hospitality Services Management	BBA	ACBSP
52.1701	Insurance and Real Estate	BBA	ACBSP
30.9999	Interdisciplinary Studies	BSIS	
09.0401	Journalism	BA	
52.0201	Management	BBA	ACBSP
52.1401	Marketing	BBA	ACBSP
27.0101	Mathematics	BS	
13.1311	Mathematics Education	BSE	NCATE
16.0101	Modern Foreign Languages	BA	NCATE
50.0901	Music	BA	NASM
50.0901	Music	BM	NASM
13.1312	Music Education	BME	NASM & NCATE
30.0101	Natural Science	MSNS	NCATE
51.1601	Nursing	BSN	CCNE
51.1699	Nursing	MSN	IHL & CCNE
52.0204	Office Administration	BBA	ACBSP
45.1001	Political Science	BA	
13.0101	Professional Studies	EDD	NCATE
42.0101	Psychology	BA	
13.1205	Secondary Education	EDS	NCATE
13.1205	Secondary Education	MED	NCATE
45.0101	Social Science	BS	
13.1317	Social Science Education	MED	NCATE
13.1317	Social Science Education	BSE	NCATE
44.0701	Social Work	BSW	CSWE
13.1001	Special Education	MED	NCATE & CEC
13.1001	Special Education	BSE	NCATE & CEC
24.0102	Communication Studies and Theatre Arts	BA	
51.0204	Speech and Hearing Sciences	BS	
13.1206	Teaching (Alternate Route)	MAT	NCATE

Source: IHL Academic Program Inventory

Date: July 2008

DELTA STATE UNIVERSITY
DEGREES AWARDED: BY TYPE OF DEGREE
5-YEAR TREND

Degrees	AY 2003*		AY 2004*		AY 2005*		AY 2006*		AY 2007*		5-YR Change	
	#	%	#	%	#	%	#	%	#	%	#	%
Bachelor's	596	76.0%	620	74.1%	584	70.8%	559	72.8%	635	74.5%	39	6.5%
BA	44	7.4%	44	7.1%	29	5.0%	38	6.8%	59	10.6%	15	34.1%
BBA	192	32.2%	192	31.0%	180	30.8%	136	24.3%	161	28.8%	-31	-16.1%
BCA	24	4.0%	26	4.2%	24	4.1%	19	3.4%	13	2.3%	-11	-45.8%
BFA	19	3.2%	29	4.7%	30	5.1%	18	3.2%	26	4.7%	7	36.8%
BM	0	0.0%	2	0.3%	1	0.2%	2	0.4%	0	0.0%	0	0.0%
BME	13	2.2%	8	1.3%	9	1.5%	4	0.7%	5	0.9%	-8	-61.5%
BS	99	16.6%	114	18.4%	103	17.6%	141	25.2%	166	29.7%	67	67.7%
BSCJ	18	3.0%	27	4.4%	22	3.8%	28	5.0%	19	3.4%	1	5.6%
BSE	106	17.8%	107	17.3%	96	16.4%	94	16.8%	77	13.8%	-29	-27.4%
BSGS	37	6.2%	39	6.3%	35	6.0%	19	3.4%	5	0.9%	-32	-86.5%
BSIS	-	-	-	-	-	-	3	0.5%	27	4.8%	N/A	N/A
BSN	28	4.7%	10	1.6%	26	4.5%	29	5.2%	52	9.3%	24	85.7%
BSW	16	2.7%	22	3.5%	29	5.0%	28	5.0%	25	4.5%	9	56.3%
Master's	170	21.7%	194	23.2%	207	25.1%	187	24.3%	191	22.4%	21	12.4%
MAT	0	0.0%	0	0.0%	0	0.0%	0	0.0%	7	3.7%	7	N/A
MBA	41	24.1%	52	26.8%	58	28.0%	36	19.3%	28	15.0%	-13	-31.7%
MCA	10	5.9%	11	5.7%	11	5.3%	6	3.2%	11	5.9%	1	10.0%
MPA**	0	0.0%	0	0.0%	0	0.0%	0	0.0%	5	2.7%	5	N/A
MED	84	49.4%	96	49.5%	106	51.2%	110	58.8%	91	48.7%	7	8.3%
MME	4	2.4%	1	0.5%	0	0.0%	0	0.0%	0	0.0%	-4	-100.0%
MSCD	5	2.9%	13	6.7%	9	4.3%	5	2.7%	9	4.8%	4	80.0%
MSCJ	7	4.1%	6	3.1%	9	4.3%	5	2.7%	9	4.8%	2	28.6%
MSN	7	4.1%	5	2.6%	9	4.3%	15	8.0%	29	15.5%	22	314.3%
MSNS	12	7.1%	10	5.2%	5	2.4%	10	5.3%	2	1.1%	-10	-83.3%
Specialist's	17	2.2%	17	2.0%	22	2.7%	19	2.5%	21	2.5%	4	23.5%
EDS	17	100.0%	17	100.0%	22	11.3%	19	9.8%	21	11.2%	4	23.5%
Doctoral	1	0.1%	6	0.7%	12	1.5%	3	0.4%	5	0.6%	4	400.0%
EDD	1	100.0%	6	3.1%	12	6.2%	3	1.5%	5	2.7%	4	400.0%
TOTAL	784	100.0%	837	100.0%	825	100.0%	768	100.0%	852	100.0%	68	8.7%

Source: Office of the Registrar & Office of Institutional Research and Planning

*Total degrees awarded in December and May

**MPA was re-instated in April 2005.

Date: July 2008

DELTA STATE UNIVERSITY

DECEMBER 2007 & MAY 2008 COMBINED COMMENCEMENT BY MAJOR

MAJOR	DEGREE	TOTAL
Accountancy	BBA	18
	MPAC	5
Accountancy Total		23
Administration & Supervision	EDS	14
Administration & Supervision Total		14
Art	BA	3
	BFA	26
Art Total		29
Athletic Training	BS	7
Athletic Training Total		7
Biology	BS	42
Biology Total		42
Business Administration	MBA	28
Business Administration Total		28
Chemistry	BS	8
Chemistry Total		8
Commercial Aviation	BCA	13
	MCA	11
Commercial Aviation Total		24
Community Development	MS	9
Community Development Total		9
Computer Information Systems	BBA	27
Computer Information Systems Total		27
Counseling	MED	18
Counseling Total		18
Criminal Justice	BSCJ	19
	MS	9
Criminal Justice Total		28
Educational Leadership	MED	13
Educational Leadership Total		13

DELTA STATE UNIVERSITY

DECEMBER 2007 & MAY 2008 COMBINED COMMENCEMENT BY MAJOR

MAJOR	DEGREE	TOTAL
Elementary Education	BSE	51
	EDS	7
	MAT	3
	MED	22
Elementary Education Total		83
English	BA	5
English Total		5
English Education	BSE	5
English Education Total		5
Environmental Science	BS	4
Environmental Science Total		4
Family & Consumer Sciences	BS	43
Family & Consumer Sciences Total		43
Finance	BBA	9
Finance Total		9
Foreign Language	BA	3
Foreign Language Total		3
General Business Administration	BBA	26
General Business Administration Total		26
Health PE & Recreation	BS	26
	BSE	8
	BSGS	5
	MED	15
Health PE & Recreation Total		54
History	BA	6
History Total		6
Hospitality Services Management	BBA	3
Hospitality Services Management Total		3
Insurance & Real Estate	BBA	19
Insurance & Real Estate Total		19
Interdisciplinary Studies	BSIS	27
Interdisciplinary Studies Total		27
Journalism	BA	3
Journalism Total		3
Management	BBA	42
Management Total		42

DELTA STATE UNIVERSITY

DECEMBER 2007 & MAY 2008 COMBINED COMMENCEMENT BY MAJOR

MAJOR	DEGREE	TOTAL
Marketing	BBA	17
Marketing Total		17
Mathematics	BS	2
Mathematics Total		2
Mathematics Education	BSE	5
Mathematics Education Total		5
Music	BA	4
Music Total		4
Music Education	BME	5
Music Education Total		5
Natural Sciences	MSNS	2
Natural Sciences Total		2
Nursing	BSN	52
	MSN	29
Nursing Total		81
Political Science	BA	10
Political Science Total		10
Professional Studies	EDD	5
Professional Studies Total		5
Psychology	BA	25
Psychology Total		25
Secondary Education	MAT	4
	MED	9
Secondary Education Total		13
Social Science	BS	8
Social Science Total		8
Social Science Education	BSE	6
Social Science Education Total		6
Social Work	BSW	25
Social Work Total		25
Special Education	BSE	2
	MED	14
Special Education Total		16
Speech & Hearing Sciences	BS	26
Speech & Hearing Sciences Total		26
Grand Total		852

Source: Office of the Registrar & Office of Institutional Research and Planning

Date: July 2008

DELTA STATE UNIVERSITY
GRADUATES BY RACE, GENDER, & COLLEGE
FALL 2007 & SPRING 2008 COMBINED

	Bachelor's		Master's		Educational Specialists		Doctoral		Total		
	#	%	#	%	#	%	#	%	#	%	
<u>Race/Ethnicity</u>											
White	412	64.88%	102	53.40%	4	19.05%	5	100.00%	523	61.38%	
Black	214	33.70%	86	45.03%	17	80.95%	0	0.00%	317	37.21%	
Other	9	1.42%	3	1.57%	0	0.00%	0	0.00%	12	1.41%	
<u>Gender</u>											
Male	244	38.43%	47	24.61%	3	14.29%	1	20.00%	295	34.62%	
Female	391	61.57%	144	75.39%	18	85.71%	4	80.00%	557	65.38%	
<u>College</u>											
Arts & Sciences	242	38.11%	20	10.47%	0	0.00%	0	0.00%	262	30.75%	
Business	174	27.40%	44	23.04%	0	0.00%	0	0.00%	218	25.59%	
Education	167	26.30%	83	43.46%	21	100.00%	5	100.00%	276	32.39%	
Nursing	52	8.19%	29	15.18%	0	0.00%	0	0.00%	81	9.51%	
TOTAL	635	74.53%	191	22.42%	21	2.46%	5	0.59%	852	100.00%	

Source: DSU Office of Institutional Research & Planning

Date: July 2008

DELTA STATE UNIVERSITY
RETENTION OF FIRST-TIME ENTERING FRESHMEN
(ALL FIRST-TIME FRESHMEN)
FALL 2001-2007

RETENTION AND GRADUATION RATES	YEAR ENTERED													
	2001		2002		2003		2004		2005		2006		2007	
	#	%	#	%	#	%	#	%	#	%	#	%	#	%
All first-time entering freshmen	430	100%	358	100%	330	100%	385	100%	398	100%	468	100%	477	100%
Average ACT Score	20.4		20.2		20.4		20.4		20.3		20.1		20.2	
2nd Year - Returned	294	68%	253	71%	239	72%	272	71%	251	63%	281	60%		
3rd Year - Returned	243	57%	205	57%	195	59%	222	58%	190	48%				
Degrees thru 3 years*	6	1%	2	1%	4	1%	3	1%						
4th Year - Returned	217	50%	186	52%	172	52%	171	44%						
Degrees thru 4 years*	83	19%	61	17%	56	17%								
5th Year - Returned	123	29%	120	34%	35	11%								
Degrees thru 5 years*	159	37%	131	37%										
6th Year - Returned	68	16%	24	7%										
Degrees thru 6 years*	186	43%												
7th Year - Returned	14	3%												

Source: Office of Institutional Research and Planning

Date: July 2008

*Degrees thru # years reflects the number of degrees awarded to a cohort over a period of time. The number of degrees awarded and percentage are a cumulative measure compared to the total number of first-time entering freshman.

RESOURCES



Delta State University

DELTA STATE UNIVERSITY
FINANCIAL AID SUMMARY 2006-2007 AND 2007-2008

	STUDENTS	AWARD 2006-2007	STUDENTS	AWARD 2007-2008
STUDENT LOANS				
Stafford	1,929	\$8,340,918	2,011	\$9,221,890
Unsubsidized Loan	1,656	\$6,525,522	1,579	\$6,097,687
Plus	101	\$625,820	98	\$621,588
Perkins	149	\$391,398	113	\$285,526
TOTAL*	3,597	\$15,883,658	3,395	\$16,226,691
GRANTS				
Pell Grant	1,347	\$4,231,492	1,503	\$4,402,821
SEOG	220	\$144,991	221	\$242,130
LEAP	42	\$23,014	53	\$27,938
SLEAP	73	\$607,038	0	\$0
ACG	73	\$52,022	136	\$96,450
SMART	5	\$20,000	10	\$38,000
Federal Work Study	320	\$485,074	321	\$478,060
TOTAL	2,080	\$5,563,631	2,244	\$5,285,399
SCHOLARSHIPS				
Academic Scholarship	382	\$1,315,265	310	\$1,243,824
Athletic Scholarship	241	\$1,277,591	266	\$1,490,430
Music Scholarship	135	\$317,776	142	\$354,882
Other Service**	320	\$548,688	206	\$458,917
Dependent Scholarship	65	\$123,229	60	\$129,582
Foundation	285	\$255,405	328	\$330,781
TOTAL	1,428	\$3,837,954	1,312	\$4,008,416
TOTAL AID ALL TYPES				
Title IV Accepted	2,816	\$21,447,289	2,719	\$21,512,090
Institutional Sources Accepted	692	\$4,585,236	762	\$5,367,856
State Scholarships	1,017	\$1,260,381	996	\$1,201,382
Outside Sources***	712	\$1,257,074	877	\$1,045,573
Private Loans	112	453,409	105	\$478,921
TOTAL*	3,597	\$29,003,389	3,395	\$29,605,822

*Total Students are unduplicated

**Other service includes: Graduate OOS, Art, Cheerleader, Gooch, SGA, Student Union, Student Editors, Dorm, Vice President, Delta Region, Hurricane (2006-2007 Only), Meal, & Student Affairs

*** Outside sources includes: MAMP, GI Bill, National Guard Benefits, Vocational Rehabilitation, and Off Campus Scholarships

Source: Student Financial Assistance

Date: July 2007 & July 2008

DELTA STATE UNIVERSITY
ROBERTS-LaForge LIBRARY COLLECTIONS AND UTILIZATIONS
2003-2008

LIBRARY COLLECTIONS	FISCAL YEAR				
	2003-04	2004-05	2005-06	2006-07	2007-08
Bound Volumes					
Books	258,295	267,824	268,710	269,911	271,027
U.S. Government Documents	30,039	30,565	30,922	30,506	30,367
Mississippi State Government Documents	3,871	4,079	4,137	4,351	4,472
Bound journals	47,594	49,527	50,753	51,605	53,497
Bound Indexes	5,766	5,774	5,764	5,764	5,760
Total Bound Volumes	345,565	357,769	360,286	362,137	365,123
<i>Electronic Books</i>	35,203	41,924	50,786	53,193	59,856
<i>Microforms</i>	828,979	831,508	831,610	831,839	831,950
Audio Visual Materials					
LP records	8,883	8,889	8,889	8,894	8,894
Music CDs	803	986	1,001	1,083	1,127
Sound Recordings	3,346	3,348	3,348	3,349	3,437
Video/ DVD Recordings	4,303	4,491	4,728	5,057	5,553
Other	1,158	1,288	1,336	1,348	1,396
Total Audio Visual Materials	18,493	19,002	19,302	19,731	20,407
<i>Journal Subscriptions-Hardcopy</i>	1,268	1,280	1,258	1,297	1,249
<i>Journal Subscriptions-Electronic Full-Text</i>	9,270	9,182	17,368	18,475	21,935
<i>Electronic Databases</i>	98	98	98	99	124
<i>Circulation of Materials Outside the Building</i>	36,574	30,149	29,944	32,198	27,188
<i>Circulation of Reserve Materials</i>	1,512	2,287	11,880	14,232	6,607
<i>Items Borrowed from Other Libraries</i>	1,077	1,410	1,271	1,083	1,131
<i>Items Loaned to Other Libraries</i>	1,473	1,611	1,400	1,319	1,144
<i>Electronic Index and Full-Text Database Searches</i>	224,659	275,958	283,321	351,197	318,840
Instruction Provided To:					
Classes	144	145	186	175	155
Students	2,826	3,166	3,947	5,000	4,250
Library Users-Onsite	178,557	193,868	168,707	183,101	176,039
Age of Collections:					
Percent of holdings 5 or fewer years old	11%	10%	10%	7%	7%
Percent of holdings 10 or more years old	67%	66%	65%	76%	77%

Source: Roberts-LaForge Library
Date: July 2008

DELTA STATE UNIVERSITY
INTERCOLLEGIATE ATHLETICS
2007-2008

TEAMS	LAST TITLE/CHAMPIONSHIP	2007-08 Record		
		WINS	LOSSES	TIES
Baseball	2008 Gulf South Conference Champions	48	11	0
Basketball:				
Men's		14	12	0
Women's	NCAA Division II Final Four 2008 South Central Region Champions	33	1	0
Women's Cross-Country	12th Place-GSC Cross Country Champions			
Golf	7th Place-GSC Golf Championship			
Soccer:				
Men's		5	14	0
Women's		9	9	1
Women's Softball		33	24	0
Tennis:				
Men's		11	6	0
Women's	2008-GSC West Champions	13	3	0
Swimming & Diving:				
Men's	2008 NCAA-19th ranked			
Women's	2008 NCAA-22nd ranked			
Football	2008 Gulf South Conference Champions	10	2	0

ATHLETIC FACILITIES CAPACITY	
FACILITIES	SEATING CAPACITY
Parker Field-McCool Stadium	8,500
Walter Sillers Coliseum (Basketball)	4,000
Ferriss Field (Baseball)	1,500
DSU Aquatics Center(Swimming, Diving)	1,000
DSU Softball Field (Softball)	500
DSU Soccer Field (Soccer)	100

GENERAL INFORMATION
Division: National Collegiate Athletic Association (NCAA Division II)
Conference: Gulf South Conference
Nickname: Statesmen, Lady Statesmen
Colors: Forest Green and White

Source: Office of Sports Information
Date: September 2008

GLOSSARY



Delta State University

GLOSSARY

LIST OF COURSES:

ACC- Accounting
AED- Rural School Leadership and Research Administration AMU- Applied Music
ANT- Anthropology
AUP- Audiology and Speech Pathology
ART- Art
BIO- Biology
BIS- Interdisciplinary Studies
CAV- Commercial Aviation
CED- Counseling
CEL- Elementary Education
CHE- Chemistry
CIS- Computer Information Systems
CML- Media-Library Science
COD- Community Development
COM- Communication Studies
CRD- Reading
CRJ- Criminal Justice
CSD- Secondary Education
CSP- Special Education
CUR- Teacher Education Curriculum
DMI- Delta Music Institute
ECO- Economics
EDL- Educational Leadership
ELR- Research
ENG- English
EPY- Educational Psychology
FCS- Family and Consumer Sciences
FIN- Finance
FRE- French
GBA- General Business
GEO- Geography
GER- German
GIS- Geospatial Information Systems
GMT- Gaming Management
GST- General Studies
HIS- History
HSE- Health and Safety Education
HSM- Hospitality Services Management
IRR- Insurance and real Estate
JOU- Journalism

LIST OF COURSES (CONTINUED:)

LIB- Library
MAT- Mathematics
MBA- Executive Master of Business Administration Program
MGT- Management
MKT- Marketing
MSC- Military Science
MUS- Music
NUR- Nursing
OAD- Office Administration
PER- Physical Education and Recreation
PHI- Philosophy
PHY- Physics
PSC- Political Science
PSY- Psychology
REM- Remote Sensing
RRS- Rural and Regional Studies
SHS- Speech and Hearing Science
SOC- Sociology
SPA- Spanish
SPE- Speech
SRT- Sound Recording Technology
SSC- Social Science
SUP- Supervision
SWO- Social Work
THE- Theatre

LIST OF DEGREES

Bachelor's

BA- Bachelor of Arts
BBA- Bachelor of Business
BCA- Bachelor of Commercial Aviation
BFA- Bachelor of Fine Arts
BM- Bachelor of Music
BME- Bachelor of Music Education
BS- Bachelor of Science

DEGREE'S CONTINUED

BSCJ- Bachelor of Science in Criminal Justice

BSE- Bachelor of Science in Education

BSGS- Bachelor of Science in General Studies

BSIS- Bachelor of Science in Interdisciplinary Studies

BSN- Bachelor of Science in Nursing

BSW- Bachelor of Social Work

Master's

MAT- Master of Arts in Teaching

MBA- Master of Business Administration

MCA- Master of Commercial Aviation

MPA- Master of Professional Accountancy

MED- Master of Education

MME- Master of Music Education

MSCD- Master of Science in Community Development

MSCJ- Master of Science in Criminal Justice

MSN- Master of Science in Nursing

MSNS- Master of Science in Natural Sciences

Specialist's

EDS- Educational Specialist

Doctoral

EDD- Doctor of Education

OTHER TERMINOLOGY

ACT- A standardized achievement examination for college admissions

API- Academic Program Inventory

CHP- Credit Hour Production

Cohort- A group of subjects (students) that experience an event within the same time-span. Most noted as “freshmen cohort.” Those students that begin within the same Academic Year and complete within the normal six year time-span.

Duplicated- Consists of a student who is counted at each campus attended

Ethnicity- Identity with or membership in a particular racial, national, or cultural group

Federal Work Study- Disbursed awards from the Federal College Work Study Program

FTE- Full Time Equivalent

Full-time- An undergraduate student is considered full-time if he/she takes course work equivalent to greater than eleven credit hours and a graduate student is considered full-time if he/she takes course work equivalent to greater than nine credit hours.

GRADUATE OOS- Out of state financial awards for graduate students

Gooch- The late Mr. and Mrs. C. M. Gooch of Memphis, Tennessee, provided a limited number of scholarships to be awarded based on need and scholarship.

GI BILL- Financial assistance administered by the Department of Veterans Affairs

IHL- Institutions of Higher Learning

LEAP- Leveraging Educational Assistance Partnership

Level- Undergraduate or Graduate Student

MAMP- Mississippi Alliance for Minority Participation scholarships in science programs

Part-time- An undergraduate student is considered part-time if he/she takes course work equivalent to less than twelve credit hours and a graduate student is considered part-time if he/she takes course work equivalent to less than eight credit hours.

Off-Campus- Consists of the Greenville Center and Other designated locations

On-Campus- Consists of the Main Campus located in Cleveland, Mississippi

SEOG- Supplemental Educational Opportunity Grant

SGA- Student Government Association

SLEAP- Special Leveraging Educational Assistance Partnership

SMART- Disbursed awards to all students from the National Science & Mathematics Access to Retain Talent Grant (National Smart Grant); limited to upper-level undergraduates majoring in physical, life, or computer sciences, mathematics, technology, or engineering or in a foreign language determined critical to national security

Unduplicated- Consists of a student who is counted once across multiple campuses