

DELTA STATE
UNIVERSITY 

FACTBOOK 2008 - 2009

YEAR OF PARTNERSHIPS



OFFICE OF INSTITUTIONAL RESEARCH & PLANNING

FACTBOOK

2008 - 2009

SUZANNE SIMPSON, COORDINATOR

MARCIE BEHRENS, ASSESSMENT & PLANNING SPECIALIST

ERIC ATCHISON, RESEARCH & INFORMATION SPECIALIST

OFFICE OF INSTITUTIONAL RESEARCH & PLANNING

DELTA STATE
UNIVERSITY 

DELTA STATE UNIVERSITY

PREFACE

The Delta State University Factbook is an annual publication that provides a ready source of information to answer questions frequently asked about the University. This edition contains a statistical overview of operations for the 2008-2009 academic year. Included is information, both past and present, concerning enrollment, student characteristics, faculty characteristics, revenue, and expenditures. Its primary purpose is to promote understanding for those seeking information about Delta State University.

Most of the information in this edition was obtained from statistical reports published by the Board of Trustees of State Institutions of Higher Learning, State of Mississippi. The data submitted to the Board of Trustees for this report represents not only the work of the Office of Institutional Research and Planning but also of various administrative offices such as Registrar, Enrollment Services, Human Resources, Academic Affairs, Financial Assistance, Student Affairs, Office of Information Technology, Athletics, University Relations, Alumni Affairs, and Library Services. Without their continued assistance and cooperation, this publication would not be possible. We extend to them our sincere appreciation.

The Office of Institutional Research and Planning, in its on-going effort to provide timely management information, encourages your comments and suggestions for improvement. We hope you find this edition of the *Factbook* both informative and useful.

Office of Institutional Research and Planning
Kent Wyatt Hall 234
Delta State University
Cleveland, MS 38733

TABLE OF CONTENTS

PREFACE	iii
<u>I. GENERAL INFORMATION</u>	
Board of Trustees (IHL)	2
President's Cabinet & Academic Council	3
Organizational Chart	4
Historical Sketch	5
Institutional Vision & Mission	6
Guiding Principles	7
University Characteristics	9
<u>II. NEW STUDENTS</u>	
Applications, Admissions, and Enrollments	12
Map: Total First Time Freshmen	13
ACT Scores for On Campus First-Time Entering Freshmen	14
ACT Data for Entering Freshmen	15
Major Feeder High Schools for ACT Tested Freshmen	16
Major Feeder High Schools for ACT Tested Freshmen - Out of State	19
Transfer Students by Institution	21
Map: Total In-state Transfers	22
<u>III. ENROLLMENT</u>	
Enrollment of MS Institutions by Level	24
Enrollment of MS Institutions by Headcount and FTE	25
Enrollment of Students by Status: 10-Year Trend (On and Off Campus)	26
Enrollment of Students by Class: 10-Year Trend (On and Off Campus)	27
Enrollment of Students by Race: 10-Year Trend (On and Off Campus)	28
Enrollment of Students by School: 10-Year Trend (On Campus)	29
Enrollment Summary of Students by Race: (On and Off Campus)	30
Enrollment by Level: 5-Year Trend (Off Campus/Dual)	31
Enrollment of Graduate Students by Academic Level (On Campus)	32
Enrollment by Age Distribution: Full Time & Part Time	33
Enrollment by Age Distribution: Level & Ethnicity	34
Active Enrollment Analysis	35
<u>IV. CREDIT HOUR PRODUCTION</u>	
Credit Hour Production Analysis	38
Credit Hour Summary by Discipline	40

TABLE OF CONTENTS (Cont.)

V. HOUSING

Men & Women Comparative Room Report: 5-Year Trend	43
Enrollment of Students by Counties: 5-Year Trend	44
Map: Enrollment of Students by Counties	47

VI. DEGREES GRANTED

Academic Program Inventory	49
Degrees Awarded: 5-Year Trend	52
Combined Commencement: Dec. 2008 & May 2009	53
Graduates by Race, Gender, and College	56
Graduates with Honors	57

VII. RETENTION

All First-Time Entering Freshmen	59
All First-Time Entering Freshmen (White)	60
All First-Time Entering Freshmen (African American)	61
All First-Time Entering Freshmen (Other)	62
All First-Time Entering Freshmen (Male)	63
All First-Time Entering Freshmen (Female)	64

VIII. FACULTY AND STAFF

Summary Full-Time Faculty by Race	66
DSU Faculty Salary Comparison	66
DSU Total Faculty & Staff Full-time & Part-time	67
DSU Faculty/Instructor Highest Degree Earned	68

IX. RESOURCES

Financial Aid Summary	70
Library Collections and Utilizations	71
Athletics	72
Tuition and Fees	74
Tuition 5-Year Trend	75

X. Glossary

List of Courses & Abbreviations	77
List of Degrees & Abbreviations	78
Other Terminology	80

GENERAL INFORMATION

**DELTA STATE
UNIVERSITY** 

INSTITUTIONS OF HIGHER LEARNING
BOARD OF TRUSTEES
2008-2009

Mr. H. Ed Blakeslee
Gulfport

Dr. Stacy Davidson, Jr.
Cleveland

Dr. Bettye H. Neely
Grenada

Mr. Bob Owens
Jackson

Mr. Aubrey Patterson
Tupelo

Mr. Alan W. Perry
Jackson

Ms. Christine L. Pickering
Biloxi

Ms. Robin J. Robinson
Laurel

Mr. Scott Ross
Vice President, West Point

Dr. Douglas W. Rouse
Hattiesburg

Mr. C.D. Smith, Jr.
Meridian

Ms. Amy Whitten
President, Oxford

Dr. Thomas Meredith, Commissioner of Higher Education (July 1, 2008 -Nov. 15, 2008)
Dr. Aubrey K. Lucas, Interim Commissioner of Higher Education (Nov. 15, 2008-present)

3825 Ridgewood Road
Jackson, MS 39211-6453
(601) 432-6623 (phone)
(601) 432-6972 (fax)

DELTA STATE UNIVERSITY
PRESIDENT'S CABINET & ACADEMIC COUNCIL
2008-2009

Cabinet

John M. Hilpert, Ph.D.	President
H. Wayne Blansett, Ed.D.	Vice President, Student Affairs
Lizabeth L. Carlson, D.S.N.	Academic Council Representative
Keith Fulcher, M.Ed.	Executive Director, Alumni-Foundation
David Hebert, Ph.D.	Faculty Senate President
Ann Lotven, Ed.D.	Provost and Vice President, Academic Affairs
Jeremy McClain, M.B.A	Director, Athletics
Greg Redlin, M.B.A.	Vice President, Finance and Administration
Michelle A-M Roberts, Ed.D.	Vice President, University Relations
Myrtis S. Tabb, Ed.D.	Associate Vice President, Finance & Administration

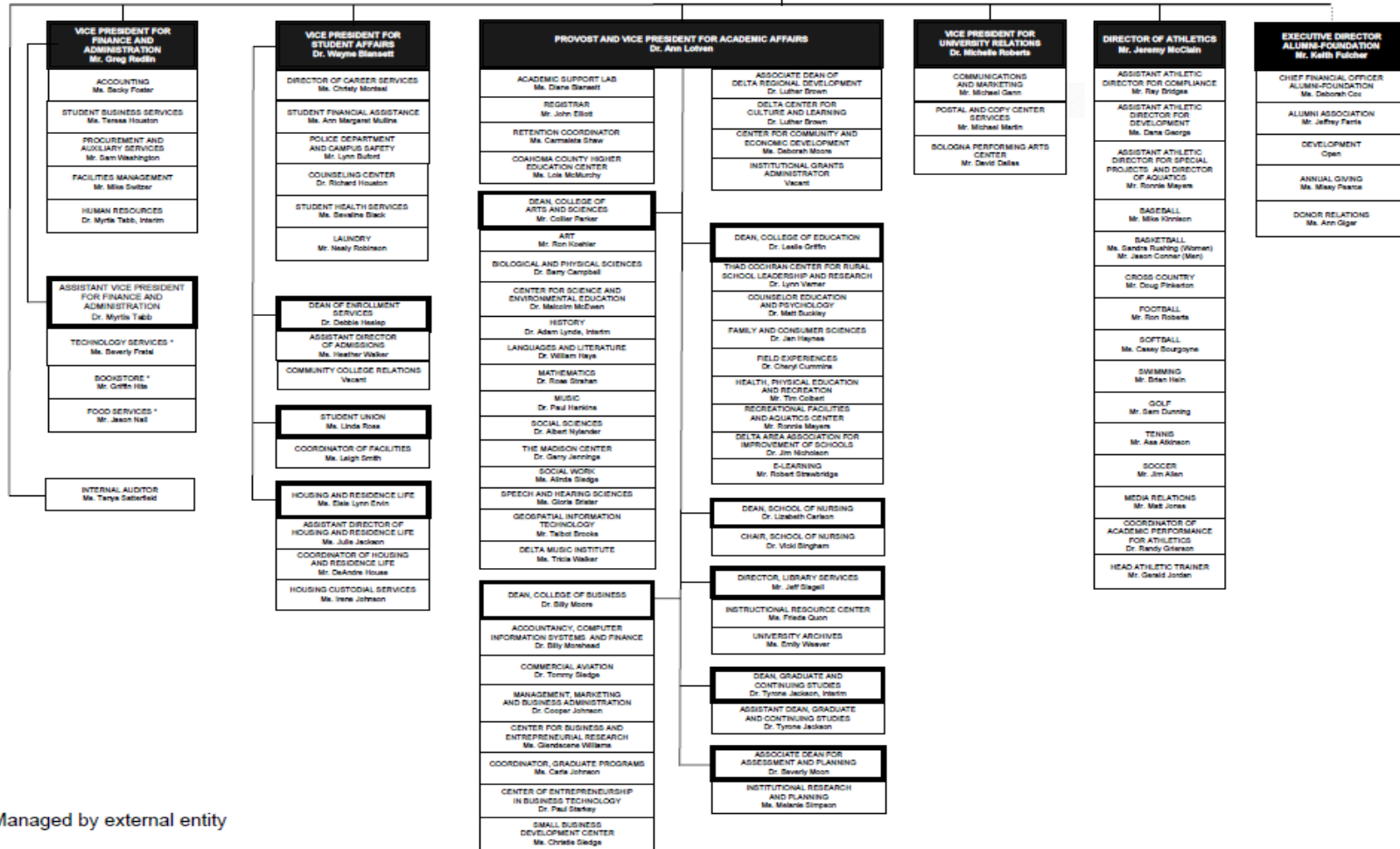
Academic Council

Ann Lotven, Ed.D.	Provost and Vice President, Academic Affairs
Luther Brown, Ph.D.	Associate Dean, Delta Regional Development
Lizabeth L. Carlson, D.S.N.	Dean, School of Nursing
John Elliott, M.A.	Registrar
Leslie Griffin, Ed.D.	Dean, College of Education
David Hebert, Ph.D.	Faculty Senate President
Debbie Heslep, Ed.D.	Dean, Enrollment Management/Director, Admissions
Ann Lotven, Ed.D.	Provost and Vice President, Academic Affairs
Tyrone Jackson, Ph.D.	Interim Dean, Division of Graduate and Continuing Studies
Beverly Moon, Ph.D.	Associate Dean, Assessment and Planning
Billy C. Moore, Ph.D.	Dean, College of Business
Collier Parker, M.F.A.	Dean, College of Arts and Sciences
Jeff Slagell, M.A.	Director, Library Services

**DELTA STATE UNIVERSITY
ADMINISTRATIVE AND
ACADEMIC ORGANIZATION
JULY 2008**

**BOARD OF TRUSTEES
Institutions of Higher Learning
(Commissioner: Dr. Thomas Meredith)**

**PRESIDENT
Dr. John Hilpert**



* Managed by external entity

DELTA STATE UNIVERSITY

HISTORICAL SKETCH

Delta State University was created as Delta State Teachers College by Senate Bill Number 263, Chapter 284, entitled An Act to Create and Establish the Delta State Teachers College. Governor Henry L. Whitfield signed the bill on April 9, 1924. Cleveland and Bolivar County provided the College's first physical facilities in the form of three buildings that formerly housed the Bolivar County Agricultural High School. The institution opened for its first regular session on September 15, 1925, with a faculty and staff of eleven and a student body of ninety-seven.

The College's first president, Mr. James Wesley Broom, died during Delta State's first session. He was succeeded by Dr. W. M. Kethley, who served as president from 1926 to 1956. Dr. James M. Ewing became the third president on September 1, 1956, and served until his retirement on July 31, 1971. Dr. Aubrey K. Lucas served as the institution's fourth president from August 1, 1971, until June 30, 1975. On July 1, 1975, Dr. Forest Kent Wyatt became the fifth president, and he served until his retirement on June 30, 1999. He was succeeded by Dr. David L. Potter on July 1, 1999, who served as sixth president until March 9, 2003. Dr. John M. Hilpert became Delta State University's seventh president on September 1, 2003.

The growth and expanding mission of the institution are evidenced by its name change in 1955 to Delta State College. In 1969 Delta State was authorized to reorganize its academic structure into four schools. The School of Arts and Sciences and the School of Business were activated in 1969, and the School of Education and School of Graduate Studies were implemented in 1970. A School of Nursing was authorized in 1977 and began operation in 1978. On March 15, 1974, the institution was officially designated Delta State University to reflect its continued growth and expanded scope.

When created in 1925, Delta State was authorized to offer only the Bachelor of Science degree in Education. The first such degrees were conferred in June 1928. Undergraduate degrees are now offered in the arts, sciences, humanities, business, nursing, commercial aviation, and education.

In 1965, the University initiated a graduate program, and the first Master of Education degrees were conferred in May, 1966. Delta State University now offers Master's degrees in the areas of business, commercial aviation, education, natural and social sciences, and nursing, as well as the Educational Specialist degree and Doctor of Education in professional studies.

From a small teacher-training institution in the 1920's, Delta State has grown into a multi-purpose university with a strong focus on high-quality classroom instruction. Enrollment has increased to more than 4,000 students, and corresponding growth has occurred in physical facilities. The growth and success of the University are tributes to the dedication of the faculty and staff, the hard work of the students, and the strong support of the Delta community and state legislature.

DELTA STATE UNIVERSITY

VISION & MISSION

Vision

Students at Delta State University will learn and grow in an environment that fosters discovery and creativity. The institution intends to be the best regional university in America as it combines a heritage of academic strength with a robust commitment to serving people and communities, particularly in the Mississippi Delta.

Institutional Mission

As a regional Carnegie Master's I university located in Cleveland, Mississippi, Delta State University serves as an educational and cultural center of the Mississippi Delta emphasizing service to the Northern Delta Counties and its campus centers in Clarksdale and Greenville. The University offers undergraduate, graduate, and continuing education programs of study leading to baccalaureate and master's degrees in the Colleges of Arts and Sciences, Business, Education, and the School of Nursing, as well as a Doctorate in Education. Emphasis is placed on excellence in instruction, followed by service and research, in the creation of a community of scholars.

With special attention to small classes, a friendly environment, and a broad liberal arts foundation, the University encourages significant student-faculty interactions. Delta State provides programs and services which promote intellectual, cultural, ethical, physical, and social development. Students from different cultural, socioeconomic, and ethnic backgrounds will develop the ability to respect and evaluate the thoughts of others; to develop, assess, and express their own thoughts effectively; and to use the techniques of research and performance associated with their disciplines.

Approved by the Board of Trustees of State Institutions of Higher Learning, March 18, 2004.

GUIDING PRINCIPLES

COMMITMENT TO QUALITY IN ACADEMIC PROGRAMS

Acknowledging its beginnings as a teacher's college, the University sustains excellence in teacher education while also continuing to expand offerings in traditional as well as new areas of study. From the core disciplines such as arts, humanities, and sciences to unique programs such as commercial aviation and community development, the University is committed to meeting the ever-changing and evolving needs of the students it serves. It sustains quality in those programs by maintaining accreditation of all programs for which an accrediting agency exists.

COMMITMENT TO LEARNING, SCHOLARSHIP & STUDENT ENGAGEMENT

Delta State provides programs that cultivate intellectual curiosity and promote scholarship among its students. Through a state-of-the-art library supplemented by a campus network of computer labs, students have access to a full range of information resources in support of learning. The University also acknowledges the importance of student engagement as central to successful learning. Toward that end the University has dedicated its quality enhancement plan as required for regional accreditation to increased student engagement. In support of community engagement and service-learning experiences for students, the University has created an office and a faculty role to sustain those efforts.

SUPPORT FOR THE ARTS

Delta State recognizes the need for a vibrant creative and performing arts program for its students and the region. The renovation of Jobe Hall provides a state-of-the-art theatre facility for student productions. Through the Bologna Performing Arts Center, the Delta Music Institute, the Janice Wyatt Summer Arts Institute, and a partnership with the Delta Arts Alliance, the University ensures the preservation and enhancement of the arts throughout the region.

ENCOURAGEMENT OF INNOVATION & EXPERIMENTATION

Delta State endorses the principles of innovation and experimentation, and makes them a part of its institutional culture. The University acknowledges the importance of an environment where students and faculty can undertake risks and experiment with new ideas.

RESPECT FOR PEOPLE & IDEAS

Delta State promotes mutual respect, teamwork, fairness, and integrity. The University is diligent in working to create a climate where students, employees, and constituents are valued and nurtured. Through an ongoing re-engineering project, the University converts these principles into action.

COMMITMENT TO A STUDENT-CENTERED CAMPUS

Delta State promotes a campus culture that fosters student development. From an array of student services to a nationally recognized athletic program, the University is dedicated to ensuring that the full range of student needs and interests are met.

COMMITMENT TO INSTITUTIONAL EFFECTIVENESS

Delta State acknowledges its role as a public institution funded largely by the citizens of Mississippi. In recognition of that public trust, the University is committed to high standards of excellence with appropriate emphasis on effectiveness and productivity.

GUIDING PRINCIPLES

COMMITMENT TO REGIONAL & ECONOMIC DEVELOPMENT

Delta State, in partnership with various organizations, will advance community and economic development in the Delta region to improve the quality of life and raise the educational level of its citizens. Special attention is given to collaboration with our educational partners: Mississippi Valley State University, Coahoma Community College, Mississippi Delta Community College, the Mississippi Department of Education, and the K-12 schools of the Delta. Moreover, the Delta Center for Culture and Learning, the Capps Archives, the Center for Business Research, and the Center for Community and Economic Development provide a structure to ensure University participation in promoting and celebrating the unique heritage of the Delta while also addressing the longstanding social, economic, and cultural challenges that inhibit advancement.

COMMITMENT TO LEADERSHIP

Delta State is actively involved in providing programs that train leaders for the twenty-first century. Through partnerships with the Kellogg Foundation, Delta Council, the Delta Regional Authority, and other Delta organizations committed to advancement in the region, the University is confident it can make a difference in the quality and training of the leaders who will serve on behalf of future generations.

COMMITMENT TO TEACHING & FACULTY DEVELOPMENT

The quality of Delta State's academic programs is central to its educational mission. That quality is affirmed through a dedicated faculty with credentials appropriate to their disciplines. The University supports high standards of quality among its faculty and maintains those standards through the Technology Learning Center, a modern faculty development office dedicated to the application of technology to teaching, and through the Kent and Janice Wyatt Faculty Development Program, a University Foundation initiative that provides resources for faculty growth.

COMMITMENT TO HEALTH

Delta State acknowledges the importance of physical health for its students and the region and extends its resources in support of that goal. Through undergraduate and graduate programs in nursing and pre-professional programs in the sciences, the University provides health care practitioners to serve the State. The University works as the leading partner in the Delta Health Alliance, a collaborative effort with other Delta stakeholders that conducts research and provides education on the health care needs of the region.

Approved by the Board of Trustees of State Institutions of Higher Learning, March 18, 2004.

DELTA STATE UNIVERSITY

UNIVERSITY CHARACTERISTICS

Location

Delta State University is located in Cleveland, Mississippi, in the heart of the Mississippi Delta. The campus consists of 331.54 acres of land within or adjoining the western corporate limits. Cleveland is considered a rural city with a population of 13,841 and is situated in Bolivar County, which has a population of 40,633 (US Census, 2000). The nearest urban city is 110 miles north in Memphis, TN. The nearest international airport is also located in Memphis. Regional airport facilities are located in Greenville, MS which is 40 miles southwest of Cleveland, and the nearest municipal airport is located within Cleveland's city limits.

Academic Year

The University operates on the semester system with the fall semester beginning in August and ending before Christmas. The spring semester begins in January and ends in May. There are two five-week summer sessions. Additionally, DSU hosts two intersessions on between Fall and Spring semesters and one between Spring and Summer sessions.

Enrollment

The total on-campus enrollment for Fall 2008 was 4,064. The total off-campus enrollment for Fall 2008 was 454; 70 in Greenville, and 384 in other locations. Students came from 33 states and 16 foreign countries.

Student Fees

Tuition and fees for Mississippi residents are \$2,225 and for non-residents \$3,366 per semester. An average room fee is \$1,586 and average meal plan is \$1,125 per semester.

Student Characteristics

Average age of Freshmen - 19 Average age of Undergraduates - 26
FTE Student/FTE Faculty ratio - 15 to 1 2nd Year Retention Rate: 64%

Housing

The University has 10 residence halls with an overall capacity of 1,007. A total of 951 students occupied student housing in Fall 2008. There are eight national fraternities and six national sororities. Approximately 18% of the undergraduate men are members of a fraternity and 18% of the women are members of a sorority.

Athletics

The University is a member of the National Collegiate Athletic Association (NCAA) at the Division II level. Approximately 9.2% of the undergraduate student population are athletes.

Accreditation

Delta State University is accredited by the Commission on Colleges of the Southern Association of Colleges and Schools to award bachelors, masters, specialists and doctoral degrees.

Degrees

The University offers twelve Bachelor's degrees, nine Master's degrees, one Specialist degree and one Doctoral degree. In 2008-09, DSU awarded 599 bachelor's degrees, 262 master's, 20 specialist's, and 5 doctoral.

Library

The Roberts-LaForge Library collections consist of 367,817 bound volumes and U.S. government documents combined 832,093 microforms, and 1,180 subscriptions.

Fine Arts

The Fielding-Wright Art Center houses the art department and contains three galleries for hanging exhibitions. The Holcombe-Norwood addition to the art center was opened in Fall, 1994 and the Bologna Performing Arts Center was completed in Spring, 1995.

DELTA STATE UNIVERSITY
UNIVERSITY CHARACTERISTICS

General Information-9

Computer Labs

Ewing Hall	24	microcomputers
Walters Hall	44	microcomputers
Nursing	22	microcomputers
Broom Hall	60	microcomputers
Library	56	microcomputers
Music	16	microcomputers
Art	36	microcomputers
Java City	5	microcomputers
Total	263	microcomputers

NEW STUDENTS

**DELTA STATE
UNIVERSITY** 

DELTA STATE UNIVERSITY
NEW STUDENT APPLICATIONS
FALL 2008

Number of Applications Received																			
	Freshman		CC-Transfer ¹		SC-Transfer ²		Re-admitted		APT Student ³		Non-Form/Over 21 ⁴		Audit		Senior Citizen		Total Under-graduates	Graduates	University Total*
	#	%	#	%	#	%	#	%	#	%	#	%	#	%	#	%	#	#	#
In-State	1,628	83%	893	95%	303	76%	252	95%	145	98%	34	85%	8	100%	14	100%	3,277	712	3,989
Out-of-State	337	17%	46	5%	94	24%	12	5%	3	2%	6	15%	0	0%	0	0%	498	74	572
Male	726	37%	330	35%	125	31%	75	28%	67	45%	32	80%	5	63%	5	36%	1,365	169	1,534
Female	1,238	63%	609	65%	272	69%	188	71%	81	55%	8	20%	3	38%	9	64%	2,408	613	3,021
Unk. Gender	1	0.05%	0	0%	0	0%	1	0.38%	0	0%	0	0%	0	0%	0	0%	2	4	6
White	770	39%	355	38%	121	30%	105	40%	138	93%	23	58%	5	63%	11	79%	1,528	325	1,853
Black	1,142	58%	566	60%	262	66%	155	59%	9	6%	15	38%	3	38%	2	14%	2,154	395	2,549
Other	53	3%	18	2%	14	4%	4	2%	1	1%	2	5%	0	0%	1	7%	93	66	159
TOTAL	1,965	100.0%	939	100.0%	397	100.0%	264	100%	148	100%	40	100%	8	100%	14	100%	3,775	786	4,561

¹ Community College Transfer

² Standard College Transfer

³ Advanced Placement

⁴ Non traditional students over 21 years of age

*University Total is duplicated

Source: DSU Admissions & Office of Institutional Research & Planning

Date: July 2009

DELTA STATE UNIVERSITY
DISTRIBUTION OF ACT COMPOSITE SCORES
ON CAMPUS COMPARISON OF FIRST-TIME ENTERING FRESHMEN
FALL 2004 & FALL 2008

ACT Score	Fall 2004		Fall 2008		Percent change
	DSU	Total for All Mississippi 4-year Universities	DSU	Total for All Mississippi 4-year Universities	DSU
36	0	1	0	1	N/A
35	0	12	0	8	N/A
34	0	18	0	31	N/A
33	0	38	0	58	N/A
32	1	71	0	111	-100%
31	0	114	0	131	N/A
30	4	185	2	203	-50%
29	9	203	5	270	-44%
28	5	254	4	282	-20%
27	12	300	13	365	8%
26	12	373	14	372	17%
25	13	352	12	445	-8%
24	12	446	18	543	50%
23	22	479	25	502	14%
22	37	581	32	688	-14%
21	29	606	40	734	38%
20	32	693	40	767	25%
19	54	728	40	832	-26%
18	47	818	69	896	47%
17	47	659	46	653	-2%
16	30	527	30	527	0%
15	3	228	5	130	67%
14	2	97	2	68	0%
13	0	69	0	40	N/A
12	0	24	0	12	N/A
11	0	8	0	8	N/A
10	0	0	0	0	N/A
9	1	1	0	0	-100%
8	0	0	0	0	N/A
Total	372	7,885	397	8,677	7%
Mean Score	20.4	21.4	20.3	21.8	-0.49%

Note: There were 397 total first time freshmen that entered in Fall 2008; only 392 were full-time students.

Source: DSU Office of Institutional Research & Planning & Mississippi Institutions of Higher Learning

Date: July 2009

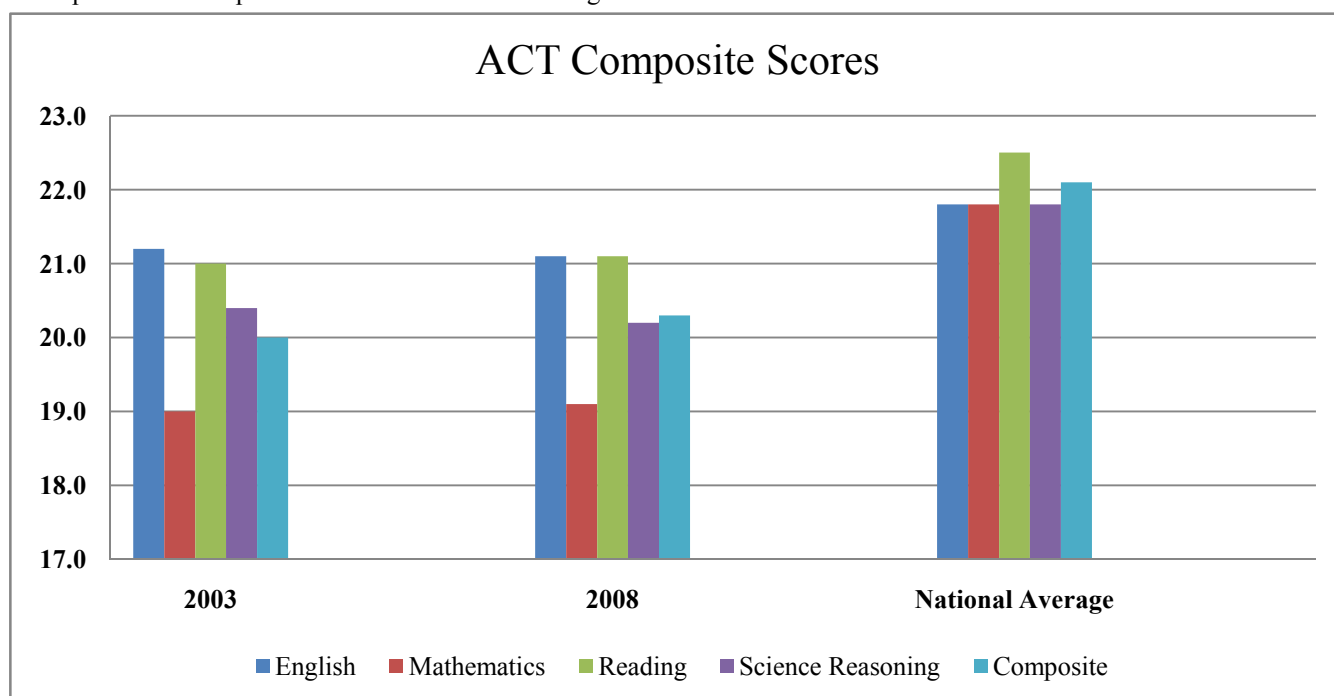
DELTA STATE UNIVERSITY
ACT DATA FOR ENTERING FRESHMEN
 FALL 2008

ACT Scores	2004	2008	2008 National Average
English	21.2	21.1	21.8
Mathematics	19.0	19.1	21.8
Reading	21.0	21.1	22.5
Science Reasoning	20.4	20.2	21.8
Composite	20.0	20.3	22.1
High School GPA	2004	2008	2008 National Average
English	3.21	3.20	3.39
Mathematics	2.97	3.06	3.22
Social Studies	3.32	3.37	3.47
Natural Sciences	3.14	3.20	3.31
Average of grades	3.17	3.21	3.34

Reference Score Value	English	Math	Reading	Science Reasoning	Composite*
Seventy-fifth percentile	25.5	25.4	26.9	24.6	25.4
Median	21.5	21.4	22.3	21.6	21.9
Twenty-fifth percentile	17.9	17.5	18.1	18.9	18.6
Standard deviation	5.7	5.1	5.9	4.7	4.8

Source: ACT Class Profile Report: Freshmen Class 08-09

*Composite scores reported from 08-09 national average normative data



Source: DSU Office of Institutional Research & Planning

Date: March 2009

DELTA STATE UNIVERSITY
MAJOR FEEDER HIGH SCHOOLS FOR ACT TESTED FRESHMEN
IN-STATE FRESHMEN CLASS 2008-2009

High School	Location of School	Enrolled	
		AVG.ACT	Number
Amanda Elzy High School	Leflore	14.5	2
Auldern Academy	Leflore	18.0	1
Baldwyn High School	Lee	17.0	1
Bay High School	Hancock	20.0	1
Bayou Academy	Bolivar	20.1	9
Benton Academy	Yazoo	18.4	5
Brandon High School	Rankin	24.7	3
Broad Street High School	Bolivar	20.0	3
Brookhaven High School	Lincoln	20.0	1
Byhalia High School	Marshall	20.0	1
Calhoun City High School	Calhoun	18.0	1
Canton Academy	Madison	18.0	1
Charles M Russell High School	Washington County	26.0	1
Charleston High School	Tallahatchie	20.8	4
Christian Brothers High School	Lafayette	18.0	1
Clarksdale High School	Coahoma	17.3	3
Cleveland High School	Bolivar	21.4	28
Clinton High School	Rankin	18.0	1
Coahoma Agriculture High School	Coahoma	15.5	2
Coahoma County High School	Bolivar	19.0	1
Columbia High School	Marion	21.5	2
Columbus High School	Lowndes	20.0	1
Coronado High School	Bolivar	24.0	1
Delta Academy	Quitman	18.7	4
Desoto Central High School	De Soto	22.6	5
Drew High School	Sunflower	20.9	7
East Side High School	Bolivar	18.3	10
Eupora High School	Webster	21.0	1
Farragut High School	Washington County	29.0	1
Florence High School	Rankin	23.3	3
GED	Bolivar	19.7	3
	Sunflower	21.0	1
Gentry High School	Sunflower	18.8	10
Greenville-Weston High School	Washington County	17.6	20
Greenwood Senior High School	Leflore	24.0	1
Grenada High School	Grenada	20.2	11
Hernando High School	De Soto	21.3	7
Holly Springs High School	Marshall	17.0	1

DELTA STATE UNIVERSITY
MAJOR FEEDER HIGH SCHOOLS FOR ACT TESTED FRESHMEN
IN-STATE FRESHMEN CLASS 2008-2009

High School	Location of School	Enrolled	
		AVG.ACT	Number
Horn Lake High School	De Soto	20.0	2
Houston High School	Chickasaw	22.0	2
Humphreys Academy	Humphreys	23.5	2
Humphreys County High School	Humphreys	17.0	2
Indianola Academy	Sunflower	23.0	4
Jackson Preparatory School	Hinds	21.5	2
Jacob J McClain High School	Holmes	17.0	2
John F Kennedy Memorial High School	Bolivar	19.0	4
Kirk Academy	Grenada	20.2	4
Le Flore County High School	Leflore	16.8	6
Lee Academy	Coahoma	20.5	11
Leland High School	Washington County	18.0	3
Logan River Academy	Madison	23.0	1
Madison Central High School	Madison	21.5	2
Madison Ridgeland Academy	Madison	27.0	1
Magnolia Heights School	Tate	19.0	1
Manchester Academy	Yazoo	22.0	3
Maranatha Christian Academy	Montgomery	18.0	1
Martha'S Vineyard Regional High School	Bolivar	19.0	1
McAdams High School	Attala	15.0	1
Mississippi School of the Arts	Lincoln	17.5	2
Neshoba Central High School	Neshoba	20.0	1
New Hope High School	Lowndes	21.5	2
Norma C O'Bannon High School	Washington County	16.0	1
North Panola High School	Panola	20.0	2
North Pike High School	Pike	16.0	1
North Sunflower Academy	Sunflower	19.2	5
Northeast High School	Lauderdale	21.0	1
Oak Grove High School	Lamar	22.5	2
Ocean Springs High School	Jackson	23.0	1
Olive Branch High School	De Soto	21.7	9
Oxford High School	Lafayette	24.0	3
Patrick Henry High School	Washington County	17.0	1
Pearl High School	Rankin	23.0	2
Pelahatchie Attendance Center	Rankin	16.0	1
Picayune Memorial High School	Pearl River	17.0	1
Pillow Academy	Leflore	21.7	6
Pisgah High School	Rankin	19.5	2

DELTA STATE UNIVERSITY
MAJOR FEEDER HIGH SCHOOLS FOR ACT TESTED FRESHMEN
IN-STATE FRESHMEN CLASS 2008-2009

High School	Location of School	Enrolled	
		AVG.ACT	Number
Porters Chapel Academy	Issaquena	18.0	1
Prince George High School	Coahoma	27.0	1
Ray Brooks High School	Bolivar	20.0	1
Resurrection Catholic School	Jackson	25.0	1
Ridgeland High School	Madison	27.0	1
Ripley High School	Tippah	21.0	1
Riverside High School	Washington County	20.6	5
Rosa Fort High School	Tunica	16.0	1
Ruleville Central High School	Sunflower	17.9	6
Saltillo High School	Lee	24.0	1
Sharkey-Issaquena Academy	Sharkey	24.4	5
Shaw High School	Bolivar	17.4	5
Simmons High School	Washington County	18.9	9
South Delta High School	Sharkey	17.5	2
South Panola High School	Panola	20.9	7
Southaven High School	De Soto	21.0	2
Southern Baptist Education Center	De Soto	24.5	2
St Josephs High School	Washington County	19.0	1
Starkville High School	Oktibbeha	17.0	1
Strider Academy	Tallahatchie	19.7	3
Terry High School	Hinds	26.0	2
Vardaman High School	Calhoun	21.0	1
Vicksburg High School	Warren	17.0	1
Vidalia High School	Adams	21.0	1
Walnut High School	Tippah	23.0	1
Warren Central High School	Warren	23.3	6
Washington School	Washington County	20.7	4
West Bolivar District High School	Bolivar	17.0	2
West Lauderdale High School	Lauderdale	20.0	1
West Tallahatchie High School	Tallahatchie	17.0	4
Winona High School	Montgomery	25.5	2
Yazoo City High School	Yazoo	18.0	1
Yazoo County High School	Yazoo	20.7	3
Grand Total		20.1	342

Source: DSU Office of Institutional Research & Planning

Date: July 2009

DELTA STATE UNIVERSITY
MAJOR FEEDER HIGH SCHOOLS FOR ACT TESTED FRESHMEN
OUT-OF-STATE FRESHMEN CLASS 2008-2009

High School	Location	Enrolled	
		AVG.ACT	Number
Albany High School	Louisiana	19.0	1
Arlington High School	Tennessee	19.5	2
Batesville High School	Arkansas	20.0	1
Bayou Academy	Texas	18.0	1
Briarcrest Christian School	Tennessee	20.0	1
Briarfield Academy	Louisiana	19.0	1
Cape Central High School	Missouri	23.0	1
Captain Shreve High School	Louisiana	22.0	1
Christian Brothers High School	Tennessee	20.5	2
Darlington School	Georgia	22.0	1
DeSoto School	Arkansas	19.8	4
Demopolis High School	Alabama	21.0	1
Edward S. Marcus High School	Texas	28.0	1
Florence High School	Alabama	18.0	1
Foreign High School		22.0	1
		27.0	1
		20.0	1
		21.0	1
		23.0	1
Germantown High School	Tennessee	26.0	1
Guy Perkins High School	Arkansas	18.0	1
Home School	Arkansas	21.0	1
Horizon High School	Colorado	22.0	1
Houston County High School	Georgia	23.0	1
Juan Seguin High School	Texas	23.5	2
Keystone National High School	Tennessee	18.0	1
Klein Collins High School	Texas	25.0	1
Lake Region High School	Florida	20.0	1
Lawrence Free State Hs	Kansas	22.0	1
Lindbergh High School	Missouri	28.0	1
Locust Fork High School	Alabama	22.0	1
Mandarin High School	Florida	18.0	1
Marshall Academy	Tennessee	21.0	1
McKinney Boyd High School	Texas	23.0	1
Midland High School	Texas	19.0	1
Muhlenberg North High School	Kentucky	18.0	1
Neville High School	Louisiana	20.0	1
Northshore High School	Louisiana	18.0	1

DELTA STATE UNIVERSITY
MAJOR FEEDER HIGH SCHOOLS FOR ACT TESTED FRESHMEN
OUT-OF-STATE FRESHMEN CLASS 2008-2009

High School	Location	Enrolled	
		AVG.ACT	Number
Oakville Senior High School	Missouri	16.0	1
Ponchatoula High School	Louisiana	17.5	2
Prairie Ridge High School	Illinois	20.0	1
Robertsdale High School	Alabama	24.0	1
Saint Pauls Episcopal School	Alabama	20.0	1
Sweet Water High School	Alabama	22.0	1
Taylorville High School	Illinois	29.0	1
Tipton-Rosemark Academy	Tennessee	24.5	2
Toms River South High School	New Jersey	21.0	1
Washington School	Arkansas	18.0	1
Grand Total		21.2	56

Source: DSU Office of Institutional Research & Planning

Date: July 2009

DELTA STATE UNIVERSITY
IN-STATE TRANSFER STUDENTS BY INSTITUTION
FALL 2008

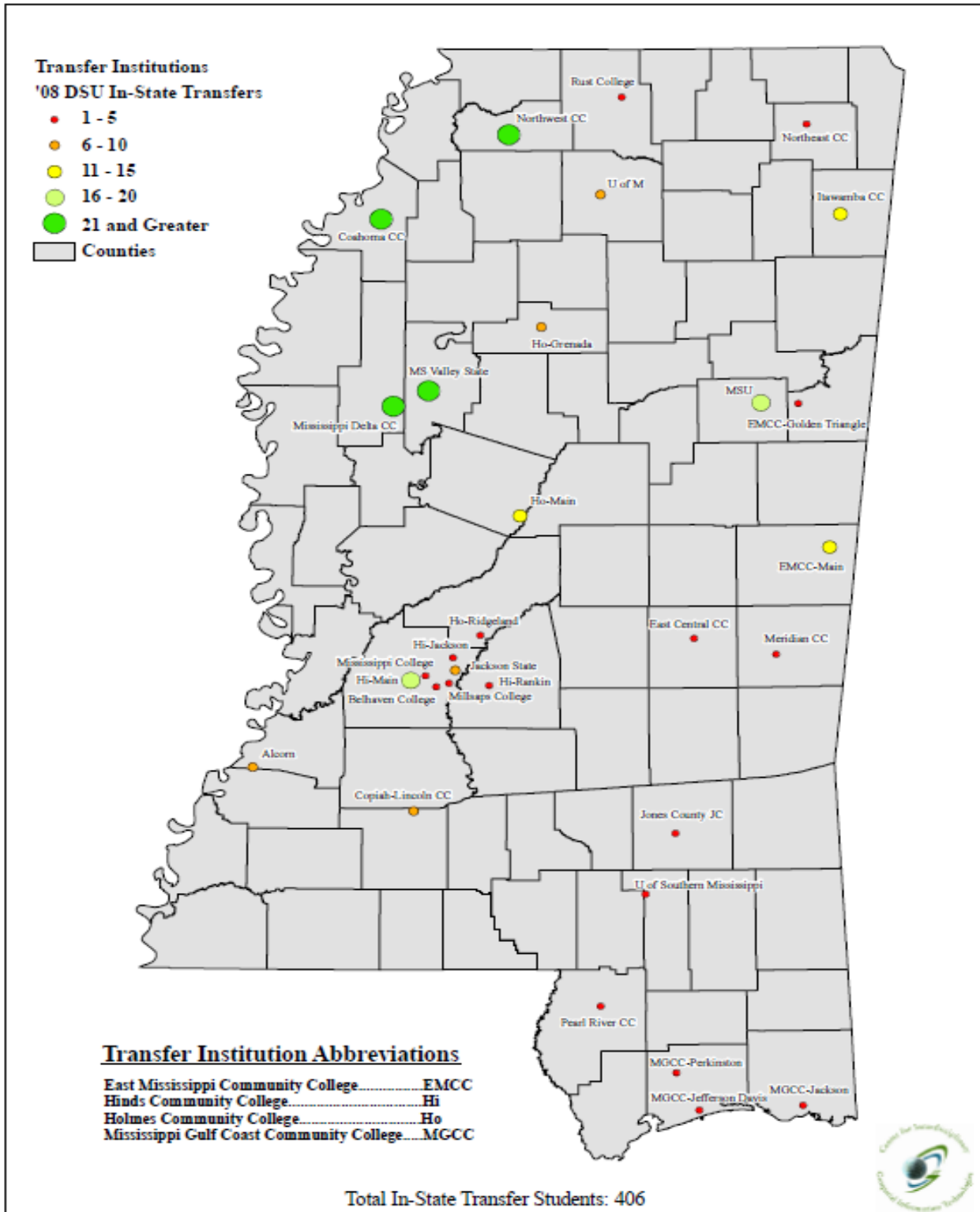
Transfer University	Total Students
Alcorn State University	7
Belhaven College	3
Coahoma Community College	69
Copiah-Lincoln Community College	7
East Central Community College	4
East Mississippi Community College - Golden Triangle	4
East Mississippi Community College - Scooba	11
Hinds Community College - Raymond	18
Hinds Community College - Jackson	3
Hinds Community College - Rankin	1
Holmes Community College - Main Campus	14
Holmes Community College - Grenada	7
Holmes Community College - Ridgeland	1
Itawamba Community College	12
Jackson State University	9
Jones County Junior College	5
Meridian Community College	1
Millsaps College	1
Mississippi College	1
Mississippi Delta Community College	101
Mississippi State University	20
Mississippi Valley State University	21
Mississippi Gulf Coast Community College - Jackson County	1
Mississippi Gulf Coast Community College - Jefferson Davis	1
Mississippi Gulf Coast Community College - Perkinston	2
Northeast Mississippi Community College	5
Northwest Mississippi Community College	59
Pearl River Community College	2
Rust College	5
University of Mississippi	6
University Southern Mississippi	5
Grand Total	406

Note: DSU had a total of 471 transfer students in Fall 2008. 65 were from out-of-state schools.

Source: DSU Office of Institutional Research & Planning

Date: July 2009

Delta State University Total In-State Transfers Fall 2008



Source: DSU Office of Institutional Research & Planning, Mapped by Center for Geospatial Information Technology
Date: July 2009

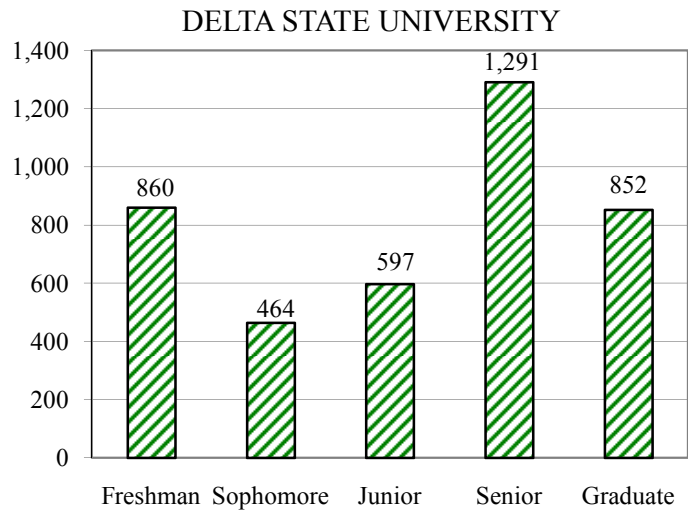
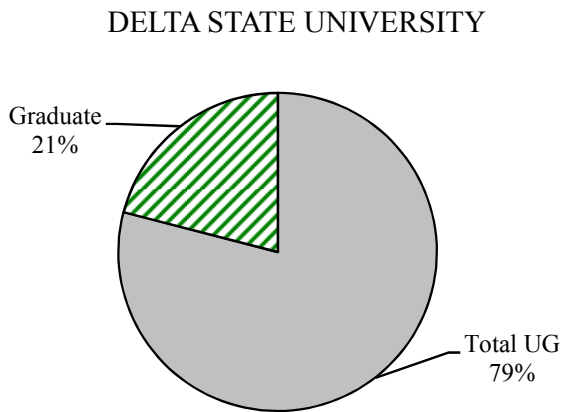
ENROLLMENT

**DELTA STATE
UNIVERSITY** 

DELTA STATE UNIVERSITY
TOTAL ON & OFF CAMPUS ENROLLMENT OF MS INSTITUTIONS BY LEVEL
FALL 2008

INSTITUTION	Freshman	Sophomore	Junior	Senior	Total UG	Graduate	TOTAL
Alcorn State University	941	492	474	719	2,626	626	3,252
DELTA STATE UNIVERSITY	860	464	597	1,291	3,212	852	4,064
Jackson State University	1,922	1,320	1,225	2,083	6,550	1,824	8,374
MS State University	3,540	2,620	3,000	4,831	13,991	3,833	17,824
MS University for Women	502	250	427	1,014	2,193	172	2,365
MS Valley State University	872	469	520	656	2,513	416	2,929
University of Mississippi*	3,495	2,519	3,058	4,289	13,361	4,185	17,546
University of Southern Mississippi	2,470	1,877	2,824	4,891	12,062	2,731	14,793
TOTAL	14,602	10,011	12,125	19,774	56,508	14,639	71,147

* Includes the University of Mississippi Medical Center



Source: IHL Fall 2008-09 Enrollment Factbook/DSU Office of Institutional Research & Planning

Date: June 2009

DELTA STATE UNIVERSITY

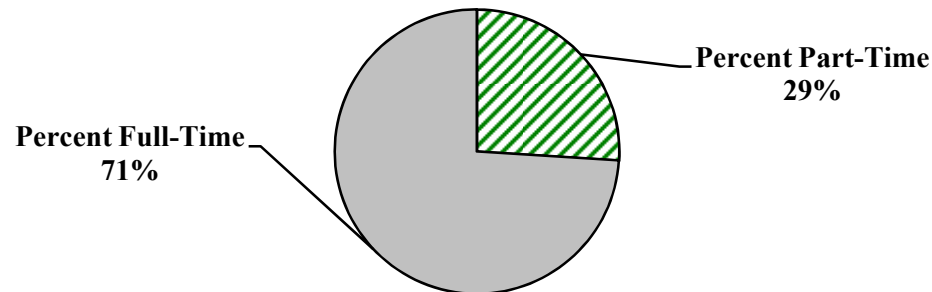
TOTAL ON & OFF-CAMPUS ENROLLMENT OF MS INSTITUTIONS BY HEADCOUNT AND FULL-TIME EQUIVALENT FALL 2008

INSTITUTION	HEADCOUNT				FULL-TIME EQUIVALENT				
	Full-Time	Part-Time	Total	Percent Part-Time	Lower*	Upper*	Graduate**	Total	FTE Percent of Headcount
Alcorn State University	2,586	666	3,252	20.5%	1,396.8	1,138.1	357.0	2,891.9	88.9%
DELTA STATE UNIVERSITY	2,905	1,159	4,064	28.5%	1,070.0	1,740.2	460.8	3,271.0	80.5%
Jackson State University	6,290	2,084	8,374	24.9%	3,063.6	2,880.0	1,076.5	7,020.1	83.8%
MS State University	14,442	3,382	17,824	19.0%	5,856.0	6,946.4	2,471.7	15,274.1	85.7%
MS University for Women	1,728	637	2,365	26.9%	583.1	1,251.9	102.5	1,937.5	81.9%
MS Valley State University	2,341	588	2,929	20.1%	1,231.9	1,048.8	229.8	2,510.5	85.7%
University of Mississippi***	15,561	1,985	17,546	11.3%	5,694.7	6,568.4	3,732.5	15,995.6	91.2%
University of Southern MS	11,743	3,050	14,793	20.6%	4,186.8	6,740.8	1,813.7	12,741.3	86.1%
TOTAL	57,596	13,551	71,147	19.0%	23,082.9	28,314.6	10,244.5	61,642.0	86.6%

*Undergraduate "FTE" is calculated by dividing total undergraduate semester credit hours by 15.

** Graduate "FTE" is calculated by dividing total graduate semester credit hours by 12.

*** Includes the University of Mississippi Medical Center. Students enrolled in health professional programs are all considered full-time.



Source: IHL Fall 2008 Enrollment Factbook/DSU Office of Institutional Research & Planning

Date: July 2009

DELTA STATE UNIVERSITY
TOTAL ON & OFF-CAMPUS ENROLLMENT OF STUDENTS BY STATUS
10-YEAR TREND
FALL 1999-2008

FALL SEMESTER	FULL-TIME		PART-TIME		TOTAL	
	Students	Percent	Students	Percent	Students	Percent
1999	3,067	75%	1,019	25%	4,086	100%
2000	2,915	74%	1,001	26%	3,916	100%
2001	3,013	78%	862	22%	3,875	100%
2002	2,797	71%	1,166	29%	3,963	100%
2003	2,813	72%	1,089	28%	3,902	100%
2004	3,018	76%	972	24%	3,990	100%
2005	3,114	76%	1,005	24%	4,119	100%
2006	3,122	74%	1,095	26%	4,217	100%
2007	3,025	74%	1,066	26%	4,091	100%
2008	2,905	71%	1,159	29%	4,064	100%
10-YEAR CHANGE	-162	-5.3%	140	13.7%	-22	-0.5%

Source: IHL Statistical Report/DSU Office of Institutional Research & Planning

Date: May 2009

DELTA STATE UNIVERSITY
TOTAL ON & OFF-CAMPUS ENROLLMENT OF STUDENTS BY CLASS
10-YEAR TREND
FALL 1999-2008

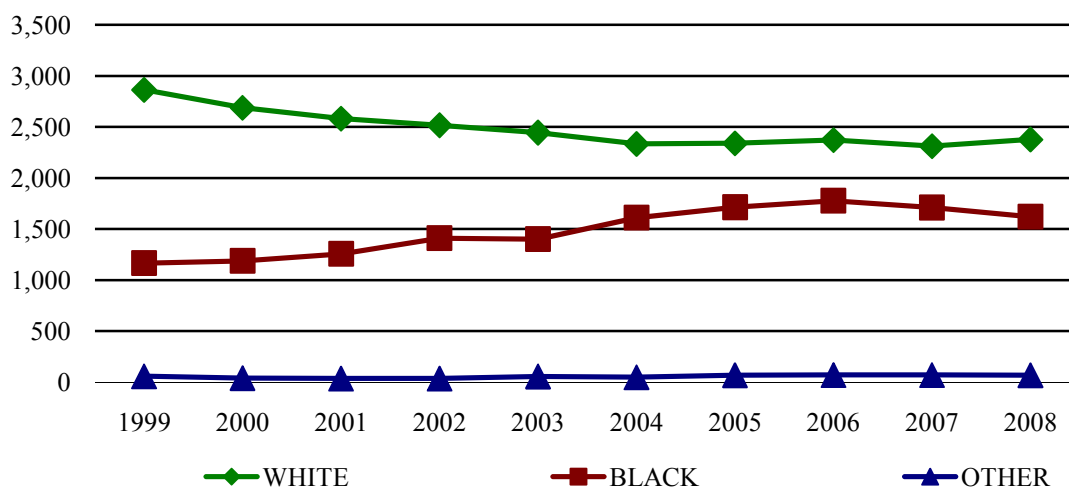
FALL SEMESTER	FRESHMAN		SOPHOMORE		JUNIOR		SENIOR		GRADUATE		TOTAL	
	#	%	#	%	#	%	#	%	#	%	#	%
1999	1,285	31%	447	11%	650	16%	1,130	28%	574	14%	4,086	100%
2000	897	23%	442	11%	795	20%	1,250	32%	532	14%	3,916	100%
2001	1,122	29%	476	12%	561	14%	1,222	32%	494	13%	3,875	100%
2002	1,208	30%	425	11%	564	14%	1,125	28%	641	16%	3,963	100%
2003	1,069	27%	437	11%	562	14%	1,145	29%	689	18%	3,902	100%
2004	887	22%	525	13%	673	17%	1,131	28%	774	19%	3,990	100%
2005	852	21%	548	13%	766	19%	1,149	28%	804	20%	4,119	100%
2006	936	22%	537	13%	792	19%	1,162	28%	790	19%	4,217	100%
2007	1,036	25%	478	12%	656	16%	1,186	29%	735	18%	4,091	100%
2008	860	21%	464	11%	597	15%	1,291	32%	852	21%	4,064	100%
10-YEAR CHANGE	-425	-33.07%	17	3.80%	-53	-8.15%	161	14.25%	278	48.43%	-22	-0.54%

Source: IHL Statistical Report/DSU Office of Institutional Research & Planning
Date: March 2009

DELTA STATE UNIVERSITY
TOTAL ON AND OFF-CAMPUS ENROLLMENT OF STUDENTS BY RACE
10-YEAR TREND
FALL 1999-2008

FALL SEMESTER	WHITE		BLACK		OTHER		TOTAL	
	#	%	#	%	#	%	#	%
1999	2,863	70%	1,166	29%	57	1%	4,086	100%
2000	2,687	69%	1,189	30%	40	1%	3,916	100%
2001	2,582	67%	1,257	32%	36	1%	3,875	100%
2002	2,517	64%	1,410	36%	36	1%	3,963	100%
2003	2,445	63%	1,401	36%	56	1%	3,902	100%
2004	2,333	58%	1,610	40%	47	1%	3,990	100%
2005	2,339	57%	1,712	42%	68	2%	4,119	100%
2006	2,372	56%	1,776	42%	69	2%	4,217	100%
2007	2,312	57%	1,709	42%	70	2%	4,091	100%
2008	2,377	58%	1,619	40%	68	2%	4,064	100%
10-YEAR CHANGE	-486	-17%	453	39%	11	19%	-22	-1%

DELTA STATE UNIVERSITY



Source: IHL Statistical Report/DSU Office of Institutional Research & Planning

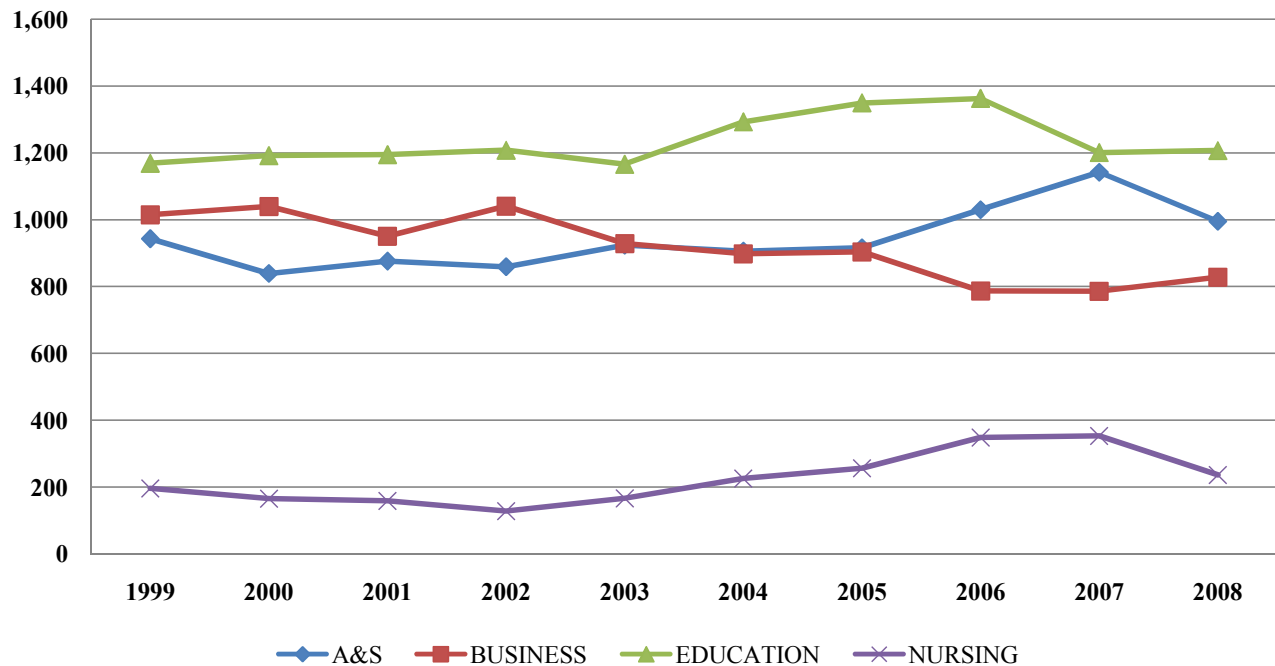
Date: July 2009

* On-campus and Off-campus Enrollment of Undergraduates and Graduates

DELTA STATE UNIVERSITY
ON-CAMPUS ENROLLMENT OF STUDENTS BY SCHOOL
10-YEAR TREND
1999-2008

FALL SEMESTER	A&S		BUSINESS		EDUCATION		NURSING		TOTAL	
	#	%	#	%	#	%	#	%	#	%
1999	943	28%	1,015	31%	1,169	35%	196	6%	3,323	100%
2000	839	26%	1,040	32%	1,192	37%	165	5%	3,236	100%
2001	876	28%	951	30%	1,195	38%	159	5%	3,181	100%
2002	859	27%	1,041	32%	1,208	37%	128	4%	3,236	100%
2003	924	29%	929	29%	1,166	37%	166	5%	3,185	100%
2004	906	27%	898	27%	1,293	39%	226	7%	3,323	100%
2005	916	27%	904	26%	1,350	39%	256	7%	3,426	100%
2006	1,030	29%	787	22%	1,363	39%	348	10%	3,528	100%
2007	1,142	33%	786	23%	1,201	34%	353	10%	3,482	100%
2008	995	30%	828	25%	1,207	37%	236	7%	3,266	100%
10-YEAR CHG.	52	6%	-187	-18%	38	3%	40	20%	-57	-2%

ON-CAMPUS ENROLLMENT BY SCHOOL



Source: DSU Office of Institutional Research & Planning
Date: July 2009

DELTA STATE UNIVERSITY
ON- AND OFF-CAMPUS ENROLLMENT SUMMARY OF STUDENTS BY RACE
FALL 2008

	White		Black		Other		TOTAL	
	#	%	#	%	#	%	#	%
Male	1,060	70.4%	411	27.3%	35	2.3%	1,506	37.1%
Female	1,317	51.5%	1,208	47.2%	33	1.3%	2,558	62.9%
First-Time Freshmen	241	60.6%	146	36.7%	11	2.8%	398	9.8%
Returning Students	1,095	60.8%	679	37.7%	27	1.5%	1,801	44.3%
Readmitted Students	124	56.6%	92	42.0%	3	1.4%	219	5.4%
Transfer Students	249	50.2%	237	47.8%	10	2.0%	496	12.2%
Returning Graduate Students	336	51.9%	303	46.8%	8	1.2%	647	15.9%
Transient	2	66.7%	1	33.3%	0	0.0%	3	0.1%
High School Students	136	95.1%	7	4.9%	0	0.0%	143	3.5%
Non-Formula Students (over "21")	33	58.9%	21	37.5%	2	3.6%	56	1.4%
First-Time Graduate Students	161	53.5%	133	44.2%	7	2.3%	301	7.4%
Full-time	1,697	58.4%	1,156	39.8%	52	1.8%	2,905	71.5%
Part-time	680	58.7%	463	39.9%	16	1.4%	1,159	28.5%
In-State	2,114	57.0%	1,545	41.7%	49	1.3%	3,708	91.2%
Out-of-State	263	73.9%	74	20.8%	19	5.3%	356	8.8%
TOTAL	2,377	58%	1,619	40%	68	2%	4,064	100%

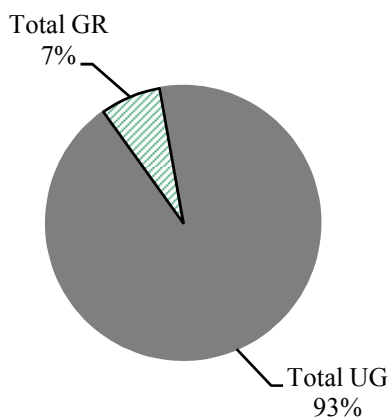
Source: IHL Statistical Report/DSU Office of Institutional Research & Planning

Date: July 2009

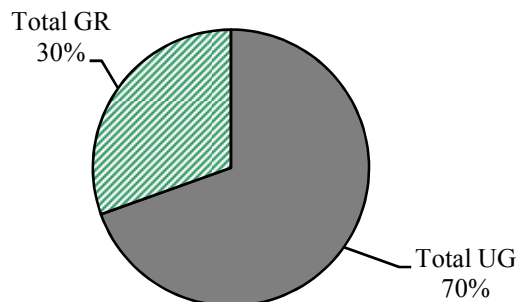
DELTA STATE UNIVERSITY
 OFF-CAMPUS/DUAL CAMPUS DUPLICATED HEADCOUNT ENROLLMENT BY LEVEL
 5-YEAR TREND
 FALL 2004-2008

Campus	2004-05	2005-06	2006-07	2007-08	2008-09	Percent Change
Greenville*						
Freshman	13	7	6	6	9	-31%
Sophomore	8	9	9	7	6	-25%
Junior	19	34	27	24	18	-5%
Senior	62	47	56	63	32	-48%
Total Undergraduate	102	97	98	100	65	-36%
Total Graduate	59	52	39	35	5	-92%
Total	161	149	137	135	70	-57%
Other Locations						
Freshman	9	19	68	124	165	95%
Sophomore	12	5	11	7	19	37%
Junior	25	11	13	12	22	-14%
Senior	45	46	42	31	61	26%
Total Undergraduate	91	81	134	174	267	66%
Total Graduate	40	56	87	44	117	66%
Total	131	137	221	218	384	66%
Grand Total	292	286	358	353	454	36%

Fall 2008 Greenville Campus



Fall 2008 Other Locations



*The Executive Master of Business Administration (EMBA) was renamed Integrated Master of Business Administration (IMBA) and moved from Greenville to (On-Campus) Spring 2008.

Source: DSU Office of Institutional Research & Planning

Date: July 2009

DELTA STATE UNIVERSITY
 ON CAMPUS GRADUATE HEADCOUNT ENROLLMENT
 BY ACADEMIC PROGRAM LEVELS & BY FULL-TIME & PART-TIME
 5 YEAR TREND
 FALL 2004-2008

	2004-05	2005-06	2006-07	2007-08	2008-09
<u>Master's Program</u>					
Full-time	226	224	201	221	237
Part-time	370	404	423	396	433
Total	596	628	624	617	670
<u>Specialist Program</u>					
Full-time	8	12	5	6	4
Part-time	42	37	59	56	73
Total	50	49	64	62	77
<u>Doctoral Program</u>					
Full-time	9	10	5	5	1
Part-time	50	53	37	38	43
Total	59	63	42	43	44
TOTAL ALL PROGRAMS	705	740	730	722	791

Source: IHL Fall 2008 Enrollment Factbook/DSU Office of Institutional Research & Planning
 Date: July 2009

DELTA STATE UNIVERSITY
AGE DISTRIBUTION OF STUDENTS BY FULL-TIME AND PART-TIME STATUS
FALL 2008

AGE	FULL-TIME						PART-TIME						UNIVERSITY			
	UNDERGRADUATE			GRADUATE			UNDERGRADUATE			GRADUATE			TOTALS			
	Men	Women	Total	Men	Women	Total	Men	Women	Total	Men	Women	Total	Men	Women	Total	Percent
Under 18	0	0	0	0	0	0	39	56	95	0	0	0	39	56	95	2.3%
18-19	225	357	582	0	0	0	26	29	55	0	0	0	251	386	637	15.7%
20-21	367	500	867	0	0	0	13	11	24	1	2	3	381	513	894	22.0%
22-24	379	370	749	24	50	74	13	31	44	9	47	56	425	498	923	22.7%
25-29	109	125	234	29	52	81	25	36	61	31	140	171	194	353	547	13.5%
30-34	22	72	94	12	25	37	16	20	36	24	79	103	74	196	270	6.6%
35-39	11	41	52	5	23	28	5	39	44	22	74	96	43	177	220	5.4%
40-49	5	46	51	6	22	28	11	47	58	23	94	117	45	209	254	6.3%
50-64	1	15	16	3	9	12	14	44	58	13	32	45	31	100	131	3.2%
65 and over	0	0	0	0	0	0	23	69	92	0	1	1	23	70	93	2.3%
Unknown	0	0	0	0	0	0	0	0	0	0	0	0	0	0	0	0.0%
TOTAL	1,119	1,526	2,645	79	181	260	185	382	567	123	469	592	1,506	2,558	4,064	100.0%

*On-and-off-campus enrollment of undergraduates and graduates

Source: DSU Office of Institutional Research & Planning

Date: March 2009

DELTA STATE UNIVERSITY
AGE DISTRIBUTION OF STUDENTS BY LEVEL & ETHNICITY
FALL 2008

AGE	WHITE						BLACK						OTHER						UNIVERSITY TOTALS			
	UNDERGRADUATE			GRADUATE			UNDERGRADUATE			GRADUATE			UNDERGRADUATE			GRADUATE			Men	Women	Total	%
	Men	Women	Total	Men	Women	Total	Men	Women	Total	Men	Women	Total	Men	Women	Total	Men	Women	Total	Men	Women	Total	%
Under 18	38	52	90	0	0	0	1	4	5	0	0	0	0	0	0	0	0	0	39	56	95	2.3%
18-19	183	232	415	0	0	0	62	146	208	0	0	0	6	8	14	0	0	0	251	386	637	15.7%
20-21	286	287	573	0	1	1	79	220	299	1	0	1	15	4	19	0	1	1	381	513	894	22.0%
22-24	260	217	477	21	47	68	129	179	308	11	49	60	3	5	8	1	1	2	425	498	923	22.7%
25-29	86	55	141	43	77	120	44	103	147	17	113	130	4	3	7	0	2	2	194	353	547	13.5%
30-34	25	23	48	15	40	55	11	69	80	18	62	80	2	0	2	3	2	5	74	196	270	6.6%
35-39	12	32	44	14	46	60	4	48	52	13	49	62	0	0	0	0	2	2	43	177	220	5.4%
40-49	11	31	42	21	51	72	5	60	65	8	64	72	0	2	2	0	1	1	45	209	254	6.3%
50-64	11	37	48	13	23	36	4	21	25	3	17	20	0	1	1	0	1	1	31	100	131	3.2%
65 and over	21	65	86	0	1	1	1	4	5	0	0	0	1	0	1	0	0	0	23	70	93	2.3%
Unknown	0	0	0	0	0	0	0	0	0	0	0	0	0	0	0	0	0	0	0	0	0	0.0%
TOTAL	933	1,031	1,964	127	286	413	340	854	1,194	71	354	425	31	23	54	4	10	14	1,506	2,558	4,064	100.0%

*On-and-off-campus enrollment of undergraduates and graduates

Source: DSU Office of Institutional Research & Planning

Date: July 2009

DELTA STATE UNIVERSITY
ACTIVE ENROLLMENT BY COLLEGE
ACADEMIC YEAR 2008-2009

College	Major Area of Study	Summer 2008		Fall 2008		Spring 2009	
		UG	GR	UG	GR	UG	GR
Arts & Sciences							
	<i>Art</i>	20	0	117	0	106	0
	<i>Audiology and Speech Pathology</i>	14	0	78	0	71	0
	<i>Biology</i>	58	0	188	0	173	0
	<i>Chemistry</i>	16	0	59	0	41	0
	<i>Comm. Studies & Theatre Arts</i>	3	0	2	0	5	0
	<i>Community Development</i>	0	5	0	16	0	18
	<i>English</i>	8	0	31	0	31	0
	<i>Environmental Science</i>	5	0	20	0	17	0
	<i>History</i>	7	0	23	0	19	0
	<i>Interdisciplinary Studies</i>	31	0	67	0	76	0
	<i>Journalism</i>	3	0	20	0	21	0
	<i>Math</i>	3	0	18	0	17	0
	<i>Modern Foreign Languages</i>	2	0	4	0	3	0
	<i>Music</i>	8	0	48	0	31	0
	<i>Natural Science</i>	0	3	0	2	1	0
	<i>Political Science</i>	14	0	39	0	33	0
	<i>Social Justice & Criminology</i>	40	2	98	25	76	21
	<i>Social Science</i>	17	0	35	0	25	0
	<i>Social Work</i>	40	0	88	0	81	0
	Total	289	10	935	43	827	39
Business							
	<i>Accounting</i>	38	10	103	19	102	12
	<i>Aviation Management</i>	4	0	25	0	24	0
	<i>Business Administration</i>	0	75	0	116	0	95
	<i>Commercial Aviation</i>	0	22	0	40	0	37
	<i>Computer Information Systems</i>	32	0	91	0	81	0
	<i>Finance</i>	4	0	22	0	19	0
	<i>Flight Operations</i>	14	0	59	0	57	0
	<i>General Business</i>	34	0	154	0	111	0
	<i>Hospitality Services Management</i>	6	0	22	0	16	0
	<i>Insurance and Real Estate</i>	12	0	22	0	22	0
	<i>Management</i>	37	0	122	0	110	0
	<i>Marketing</i>	19	0	50	0	47	0
	<i>Office Administration</i>	4	0	6	0	2	0
	Total	204	107	676	175	591	144

DELTA STATE UNIVERSITY
ACTIVE ENROLLMENT BY COLLEGE
ACADEMIC YEAR 2008-2009

College	Major Area of Study	Summer 2008		Fall 2008		Spring 2009	
		UG	GR	UG	GR	UG	GR
Education							
	<i>Athletic Training</i>	13	0	46	0	33	0
	<i>Business Education</i>	1	0	0	0	3	0
	<i>Counseling</i>	0	55	0	82	0	80
	<i>Educ. Admin. and Supervision</i>	0	47	0	41	0	36
	<i>Elementary Education</i>	77	77	264	156	240	161
	<i>Family and Consumer Sciences</i>	67	0	161	0	135	0
	<i>HPER</i>	56	21	195	38	178	37
	<i>Professional Studies</i>	0	24	0	46	0	54
	<i>Psychology</i>	29	0	84	0	77	0
	<i>Secondary Education</i>	0	10	0	25	0	27
	<i>Special Education</i>	3	46	1	61	0	62
	<i>Teaching Alternate</i>	0	22	0	12	0	11
	<i>Biology Education</i>	2	0	6	0	3	0
	<i>English Education</i>	6	0	28	0	28	0
	<i>Math Education</i>	2	0	17	0	14	0
	<i>Music Education</i>	8	0	38	0	49	0
	<i>Social Science Education</i>	13	0	34	0	26	0
	Total	277	302	874	461	786	468
Nursing							
	<i>Nursing</i>	73	23	194	51	183	55
	Total	73	23	194	51	183	55
Undeclared*							
	<i>Undeclared</i>	200	109	533	122	475	127
	Total	200	109	533	122	475	127
Total		1,043	551	3,212	852	2,862	833

* Graduating students that are undeclared are either provisional admits or their major has not been updated in the system.

Source: DSU Office of Institutional Research & Planning

Date: July 2009

CREDIT HOUR PRODUCTION

**DELTA STATE
UNIVERSITY** 

DELTA STATE UNIVERSITY
CREDIT HOUR PRODUCTION ACADEMIC YEAR 2008-2009

College	Course	Summer 2008		Fall 2008		Spring 2009	
		UG	GR	UG	GR	UG	GR
Arts & Sciences	<i>AMU</i>	4	0	202	0	180	0
	<i>ANT</i>	0	0	0	0	0	0
	<i>ART</i>	210	3	1944	30	1,747	27
	<i>AUP</i>	0	0	0	0	0	0
	<i>BIO</i>	312	16	2361	4	2,218	0
	<i>BIS</i>	78	0	183	0	210	0
	<i>CHE</i>	152	4	1031	0	821	0
	<i>COD</i>	0	9	0	78	0	42
	<i>COM</i>	81	0	486	0	492	0
	<i>CRJ</i>	177	39	834	171	543	12
	<i>DMI</i>	3	0	328	0	300	0
	<i>ENG</i>	470	27	3770	33	3,256	34
	<i>FRE</i>	0	0	165	0	177	0
	<i>FSC</i>	0	0	0	0	0	0
	<i>GEO</i>	162	6	573	0	519	0
	<i>GER</i>	0	0	45	0	24	0
	<i>GIS</i>	44	3	258	18	313	16
	<i>GST</i>	0	0	333	0	0	0
	<i>HIS</i>	201	12	1362	27	1,131	39
	<i>JOU</i>	0	0	166	0	154	0
	<i>LIB</i>	2	0	12	0	72	0
	<i>MAT</i>	81	78	2226	0	1,348	0
	<i>MUS</i>	0	0	949	0	776	0
	<i>PHI</i>	0	0	234	0	237	0
	<i>PHY</i>	221	0	620	0	583	0
	<i>PLS</i>	0	0	18	0	0	0
	<i>PSC</i>	63	0	645	0	564	6
	<i>REM</i>	3	0	9	0	21	6
	<i>SHS</i>	0	0	657	0	576	0
	<i>SOC</i>	114	45	837	39	690	81
	<i>SPA</i>	90	0	327	0	246	0
	<i>SRT</i>	0	0	7	0	8	0
	<i>SSC</i>	21	12	241	15	134	33
	<i>SWO</i>	246	0	885	0	1,014	0
	<i>THE</i>	1	0	73	0	1	0
		Total	2,736	254	21,781	415	18,355

DELTA STATE UNIVERSITY
CREDIT HOUR PRODUCTION ACADEMIC YEAR 2008-2009

College	Course	Summer 2008		Fall 2008		Spring 2009	
Business							
	<i>ACC</i>	156	66	948	202	815	153
	<i>CAV</i>	39	162	829	213	846	186
	<i>CIS</i>	150	121	1,563	61	1,542	66
	<i>ECO</i>	162	6	606	93	657	81
	<i>FIN</i>	69	0	417	48	357	150
	<i>GBA</i>	162	0	678	0	630	0
	<i>GMT</i>	0	0	0	0	0	0
	<i>HSM</i>	9	0	159	0	99	0
	<i>IRR</i>	0	0	294	0	210	0
	<i>MBA</i>	0	39	0	195	0	81
	<i>MGT</i>	372	426	1416	306	1,608	360
	<i>MKT</i>	210	9	703	237	612	18
	<i>OAD</i>	0	0	0	0	0	0
	Total	1,329	829	7,613	1,355	7,376	1,095
Education							
	<i>AED</i>	0	186	0	288	0	180
	<i>CED</i>	75	378	135	537	135	594
	<i>CEL</i>	132	474	1140	765	1,119	288
	<i>CML</i>	36	0	66	6	60	30
	<i>CRD</i>	90	234	336	0	183	66
	<i>CSD</i>	0	33	0	24	0	0
	<i>CSP</i>	225	270	402	315	453	261
	<i>CUR (700 & 800)</i>	0	96	0	150	0	144
	<i>CUR (less than 700 & 800)</i>	0	291	517	105	262	348
	<i>EDL</i>	0	171	0	90	0	126
	<i>ELR</i>	0	267	3	156	0	390
	<i>EPY</i>	45	78	228	93	210	276
	<i>FCS</i>	315	0	1879	0	1,648	0
	<i>HSE</i>	46	18	794	54	780	15
	<i>PER</i>	391	126	2078	81	2,077	213
	<i>PSY</i>	261	0	1578	0	1,422	0
	<i>SUP</i>	0	69	0	0	0	126
	Total	1,616	2,691	9,156	2,664	8,349	3,057
Nursing							
	<i>NUR</i>	301	72	821	494	835	431
	Total	301	72	821	494	835	431
Total Hours		5,982	3,846	39,371	4,928	34,915	4,879

Source: DSU Office of Institutional Research & Planning

Date: July 2009

DELTA STATE UNIVERSITY
ON/OFF CAMPUS STUDENT CREDIT HOUR SUMMARY BY DISCIPLINE
FALL 2008

LEVEL	UNDERGRADUATE		GRADUATE		TOTAL	
	<i>CHP</i>	<i>Percent</i>	<i>CHP</i>	<i>Percent</i>	<i>CHP</i>	<i>Percent</i>
University Total	39,371	88.9%	4,928	11.1%	44,299	100.0%
Arts & Sciences	21,781	98.1%	415	1.9%	22,196	50.1%
<i>AMU</i>	202	100.0%	0	0.0%	202	0.9%
<i>ANT</i>	0	NA	0	NA	0	0.0%
<i>ART</i>	1,944	98.5%	30	1.5%	1,974	8.9%
<i>AUP</i>	0	NA	0	NA	0	0.0%
<i>BIO</i>	2,361	99.8%	4	0.2%	2,365	10.7%
<i>BIS</i>	183	100.0%	0	0.0%	183	0.8%
<i>CHE</i>	1,031	100.0%	0	0.0%	1,031	4.6%
<i>COD</i>	0	0.0%	78	100.0%	78	0.4%
<i>COM</i>	486	100.0%	0	0.0%	486	2.2%
<i>CRJ</i>	834	83.0%	171	17.0%	1,005	4.5%
<i>DMI</i>	328	100.0%	0	0.0%	328	1.5%
<i>ENG</i>	3,770	99.1%	33	0.9%	3,803	17.1%
<i>FRE</i>	165	100.0%	0	0.0%	165	0.7%
<i>FSC</i>	0	NA	0	NA	0	0.0%
<i>GEO</i>	573	100.0%	0	0.0%	573	2.6%
<i>GER</i>	45	100.0%	0	0.0%	45	0.2%
<i>GIS</i>	258	93.5%	18	6.5%	276	1.2%
<i>GST</i>	333	100.0%	0	0.0%	333	1.5%
<i>HIS</i>	1,362	98.1%	27	1.9%	1,389	6.3%
<i>JOU</i>	166	100.0%	0	0.0%	166	82.2%
<i>LIB</i>	12	100.0%	0	0.0%	12	0.1%
<i>MAT</i>	2,226	100.0%	0	0.0%	2,226	10.0%
<i>MUS</i>	949	100.0%	0	0.0%	949	4.3%
<i>PHI</i>	234	100.0%	0	0.0%	234	1.1%
<i>PHY</i>	620	100.0%	0	0.0%	620	2.8%
<i>PLS</i>	18	100.0%	0	0.0%	18	0.1%
<i>PSC</i>	645	100.0%	0	0.0%	645	2.9%
<i>REM</i>	9	100.0%	0	0.0%	9	0.0%
<i>SHS</i>	657	100.0%	0	0.0%	657	3.0%
<i>SOC</i>	837	95.5%	39	4.5%	876	3.9%
<i>SPA</i>	327	100.0%	0	0.0%	327	1.5%
<i>SRT</i>	7	100.0%	0	0.0%	7	0.0%
<i>SSC</i>	241	94.1%	15	5.9%	256	1.2%
<i>SWO</i>	885	100.0%	0	0.0%	885	4.0%
<i>THE</i>	73	100.0%	0	0.0%	73	36.1%

DELTA STATE UNIVERSITY
ON/OFF CAMPUS STUDENT CREDIT HOUR SUMMARY BY DISCIPLINE
FALL 2008

LEVEL	UNDERGRADUATE		GRADUATE		TOTAL	
	<i>CHP</i>	<i>Percent</i>	<i>CHP</i>	<i>Percent</i>	<i>CHP</i>	<i>Percent</i>
Business	7,613	84.9%	1,355	15.1%	8,968	20.2%
<i>ACC</i>	948	82.4%	202	17.6%	1,150	12.8%
<i>CAV</i>	829	79.6%	213	20.4%	1,042	11.6%
<i>CIS</i>	1,563	96.2%	61	3.8%	1,624	18.1%
<i>ECO</i>	606	86.7%	93	13.3%	699	7.8%
<i>FIN</i>	417	89.7%	48	10.3%	465	5.2%
<i>GBA</i>	678	100.0%	0	0.0%	678	7.6%
<i>GMT</i>	0	NA	0	NA	0	0.0%
<i>HSM</i>	159	100.0%	0	0.0%	159	1.8%
<i>IRR</i>	294	100.0%	0	0.0%	294	3.3%
<i>MBA</i>	0	0.0%	195	100.0%	195	17.0%
<i>MGT</i>	1416	82.2%	306	17.8%	1,722	19.2%
<i>MKT</i>	703	74.8%	237	25.2%	940	10.5%
<i>OAD</i>	0	NA	0	NA	0	0.0%
Education	9,156	77.5%	2,664	22.5%	11,820	26.7%
<i>AED</i>	0	0.0%	288	100.0%	288	2.4%
<i>CED</i>	135	20.1%	537	79.9%	672	233.3%
<i>CEL</i>	1140	59.8%	765	40.2%	1,905	16.1%
<i>CML</i>	66	91.7%	6	8.3%	72	0.6%
<i>CRD</i>	336	100.0%	0	0.0%	336	2.8%
<i>CSD</i>	0	0.0%	24	100.0%	24	0.2%
<i>CSP</i>	402	56.1%	315	43.9%	717	6.1%
<i>CUR (700 & 800)</i>	0	0.0%	150	100.0%	150	1.3%
<i>CUR (less than 700 & 800)</i>	517	83.1%	105	16.9%	622	5.3%
<i>EDL</i>	0	0.0%	90	100.0%	90	0.8%
<i>ELR</i>	3	1.9%	156	98.1%	159	1.3%
<i>EPY</i>	228	71.0%	93	29.0%	321	2.7%
<i>FCS</i>	1879	100.0%	0	0.0%	1,879	15.9%
<i>HSE</i>	794	93.6%	54	6.4%	848	7.2%
<i>PER</i>	2078	96.2%	81	3.8%	2,159	18.3%
<i>PSY</i>	1578	100.0%	0	0.0%	1,578	13.4%
<i>SUP</i>	0	NA	0	NA	0	
Nursing	821	62.4%	494	37.6%	1,315	3.0%
<i>NUR</i>	821	62.4%	494	37.6%	1,315	100.0%

Source: Office of Institutional Research and Planning

Date: July 2009

HOUSING & RESIDENCY

**DELTA STATE
UNIVERSITY** 

DELTA STATE UNIVERSITY
MEN'S & WOMEN'S RESIDENCE HALLS - ROOM COMPARATIVE REPORT
5-YEAR TREND -- FALL 2004-2008

RESIDENCE HALLS	Capacity					
	10/01/08	10/01/04	10/01/05	10/01/06	10/01/07	10/01/08
MEN'S						
Whittington-Williams	N/A	109	99	99	90	closed
Bond-Carpenter	N/A	104	104	75	79	closed
Noel	66	42	45	50	47	63
Brewer	65	60	56	wiomen	women	52
Clark	66	0	0	56	40	62
Longino	60	0	0	29	37	54
New Men's Hall	179	157	160	156	137	162
TOTALS	436	472	464	465	430	393
Classification						
Freshmen		149	157	163	168	148
Sophomores		109	97	91	87	69
Juniors		133	122	131	99	100
Seniors		73	78	74	69	71
Graduates		8	10	6	7	5
TOTALS		472	464	465	430	393
WOMEN'S						
Brewer	N/A			34	22	men
Brumby-Castle	176	168	158	157	138	164
Cleveland	52	52	47	52	50	52
Cain-Tatum	110	97	88	86	72	74
Fugler-Hammett	61	86	73	91	96	108
Lawler-Harkins	172	218	208	218	205	160
Ward	N/A	42	49	closed	closed	closed
TOTALS	571	663	623	638	583	558
Classification						
Freshmen		192	195	255	238	215
Sophomores		168	149	118	135	144
Juniors		172	158	164	122	110
Seniors		122	110	95	83	83
Graduates		9	11	6	5	6
TOTALS		663	623	638	583	558
COMBINED MEN & WOMEN						
Freshmen		341	352	418	406	363
Sophomores		277	246	209	222	213
Juniors		305	280	295	221	210
Seniors		195	188	169	152	154
Graduates		17	21	12	12	11
TOTALS	1,007	1,135	1,087	1,103	1,013	951

Source: Housing & Residence Life

Date: October 2008

DELTA STATE UNIVERSITY
ON-CAMPUS ENROLLMENT OF STUDENTS BY MISSISSIPPI COUNTIES
5-YEAR TREND
FALL 2004-2008

COUNTIES	FALL 2004	FALL 2005	FALL 2006	FALL 2007	FALL 2008	5-YEAR CHANGE
Adams	14	13	8	7	10	-4
Alcorn	6	3	3	9	12	6
Amite	0	2	3	4	3	3
Attala	10	21	13	11	15	5
Benton	3	2	3	4	3	0
Bolivar	1,040	1,037	1,130	1,065	1,072	32
Calhoun	10	11	10	8	15	5
Carroll	25	22	33	30	20	-5
Chickasaw	4	4	7	9	12	8
Choctaw	5	8	6	6	2	-3
Claiborne	0	0	0	1	1	1
Clarke	2	3	5	6	6	4
Clay	5	4	5	5	10	5
Coahoma	200	237	228	222	251	51
Copiah	6	7	12	16	12	6
Covington	4	4	2	3	2	-2
Desoto	130	144	132	155	157	27
Forrest	5	9	5	6	8	3
Franklin	0	2	2	0	0	0
George	2	3	4	5	2	0
Greene	0	0	0	0	1	1
Grenada	99	111	135	127	115	16
Hancock	0	0	0	3	2	2
Harrison	12	13	22	17	14	2
Hinds	85	70	48	51	61	-24
Holmes	14	20	29	28	27	13
Humphreys	57	63	63	51	42	-15

DELTA STATE UNIVERSITY
ON-CAMPUS ENROLLMENT OF STUDENTS BY MISSISSIPPI COUNTIES
5-YEAR TREND cont.
FALL 2004-2008

COUNTIES	FALL 2004	FALL 2005	FALL 2006	FALL 2007	FALL 2008	5-YEAR CHANGE
Issaquena	11	10	7	5	4	-7
Itawamba	2	5	4	6	7	5
Jackson	19	21	20	18	18	-1
Jasper	2	3	4	3	4	2
Jefferson	3	5	5	2	2	-1
Jefferson Davis	2	1	2	2	1	-1
Jones	5	13	17	10	6	1
Kemper	4	4	1	1	1	-3
Lafayette	20	29	31	26	29	9
Lamar	3	5	3	4	5	2
Lauderdale	15	20	16	13	11	-4
Lawrence	4	7	7	3	3	-1
Leake	6	7	3	4	5	-1
Lee	37	36	38	39	38	1
Leflore	142	124	121	136	141	-1
Lincoln	8	11	12	13	12	4
Lowndes	9	12	12	10	13	4
Madison	56	62	76	65	62	6
Marion	5	7	3	4	6	1
Marshall	14	13	9	5	7	-7
Monroe	15	15	15	7	10	-5
Montgomery	18	19	24	21	17	-1
Neshoba	6	4	3	0	2	-4
Newton	3	4	3	1	0	-3
Noxubee	0	1	1	0	1	1
Oktibbeha	5	11	7	13	18	13
Panola	62	65	59	85	77	15
Pearl River	4	5	5	6	6	2

DELTA STATE UNIVERSITY
ON-CAMPUS ENROLLMENT OF STUDENTS BY MISSISSIPPI COUNTIES
5-YEAR TREND cont.
FALL 2004-2008

COUNTIES	FALL 2004	FALL 2005	FALL 2006	FALL 2007	FALL 2008	5-YEAR CHANGE
Perry	1	1	1	1	2	1
Pike	12	12	7	7	6	-6
Pontotoc	13	8	9	6	8	-5
Prentiss	2	3	4	6	5	3
Quitman	40	34	35	28	33	-7
Rankin	58	57	58	57	80	22
Scott	8	5	5	4	5	-3
Sharkey	30	32	34	31	33	3
Simpson	2	4	7	7	4	2
Smith	5	4	3	1	1	-4
Stone	4	4	4	4	2	-2
Sunflower	265	292	259	274	260	-5
Tallahatchie	71	79	90	93	91	20
Tate	39	49	42	43	38	-1
Tippah	1	4	2	2	3	2
Tishomingo	0	2	3	3	28	28
Tunica	14	21	13	20	19	5
Union	9	10	6	6	5	-4
Walthall	3	4	3	0	1	-2
Warren	40	29	31	29	35	-5
Washington	556	567	568	531	577	21
Wayne	3	2	3	1	3	0
Webster	3	2	10	8	7	4
Wilkinson	0	0	0	0	1	1
Winston	2	1	2	5	5	3
Yalobusha	27	21	26	32	31	4
Yazoo	49	46	41	45	44	-5
TOTALS	3,475	3,625	3,682	3,595	3,708	233

Source: IHL Statistical Report

Date: July 2009

DEGREES

**DELTA STATE
UNIVERSITY** 

DELTA STATE UNIVERSITY
ACADEMIC PROGRAM INVENTORY
2008-2009

CIP	PROGRAMS	DEGREES	ACCREDITING BODY
52.0301	Accountancy	MPA	
52.0301	Accounting	BBA	Association of Collegiate Business Schools and Programs
50.0101	Art	BA	National Association of Schools of Art and Design
50.0101	Art	BFA	National Association of Schools of Art and Design
51.0913	Athletic Training	BS	
49.0101	Aviation Management	BCA	
26.0101	Biology	BS	National Council for Accreditation of Teacher Education
13.1399	Biology Education	BSE	
52.0201	Business Administration	MBA	Association of Collegiate Business Schools and Programs
40.0501	Chemistry	BS	The American Chemical Society
49.0104	Commercial Aviation	MCA	Federal Aviation Administration
44.0201	Community Development	MS	
52.1201	Computer Information Systems	BBA	Association of Collegiate Business Schools and Programs
13.1101	Counseling	MED	National Council for Accreditation of Teacher Education/Council for Accreditation of Counseling and Related Educational Programs
43.0104	Criminal Justice	BSCJ	
43.0104	Criminal Justice	MS	
13.0401	Educational Administration & Supervision	EDS	National Council for Accreditation of Teacher Education
13.0401	Educational Administration & Supervision	MED	National Council for Accreditation of Teacher Education
13.1202	Elementary Education	EDS	National Council for Accreditation of Teacher Education
13.1202	Elementary Education	MED	National Council for Accreditation of Teacher Education
13.1202	Elementary Education	BSE	National Council for Accreditation of Teacher Education
23.0101	English	BA	
13.1305	English Education	BSE	National Council for Accreditation of Teacher Education
30.0101	Environmental Sciences	BS	
19.0101	Family and Consumer Science	BS	American Association of Family and Consumer Sciences / Commission on Accreditation for Dietetics Education
52.0801	Finance	BBA	Association of Collegiate Business Schools and Programs

DELTA STATE UNIVERSITY
ACADEMIC PROGRAM INVENTORY
2008-2009

CIP	PROGRAMS	DEGREES	ACCREDITING BODY
49.0102	Flight Operations	BCA	
52.0101	General Business	BBA	Association of Collegiate Business Schools and Programs
13.1314	Health, Physical Education & Recreation	BSE	National Council for Accreditation of Teacher Education/National Association for Sport and Physical Education
13.1314	Health, Physical Education & Recreation	BS	Commission on Accreditation of Athletic Training Education
13.1314	Health, Physical Education & Recreation	MED	National Council for Accreditation of Teacher Education
54.0101	History	BA	
13.1399	History Education	MED	National Council for Accreditation of Teacher Education
52.0901	Hospitality Services Management	BBA	Association of Collegiate Business Schools and Programs
52.1701	Insurance and Real Estate	BBA	Association of Collegiate Business Schools and Programs
30.9999	Interdisciplinary Studies	BSIS	
09.0401	Journalism	BA	
52.0201	Management	BBA	Association of Collegiate Business Schools and Programs
52.1401	Marketing	BBA	Association of Collegiate Business Schools and Programs
27.0101	Mathematics	BS	
13.1311	Mathematics Education	BSE	National Council for Accreditation of Teacher Education
16.0101	Modern Foreign Languages	BA	
50.0901	Music	BA	National Association of Schools of Music
50.0901	Music	BM	National Association of Schools of Music
13.1312	Music Education	BME	National Council for Accreditation of Teacher Education
30.0101	Natural Science	MSNS	National Council for Accreditation of Teacher Education
51.1601	Nursing	BSN	Commission on Collegiate Nursing Education
51.1699	Nursing	MSN	Commission on Collegiate Nursing Education
52.0204	Office Administration	BBA	ACBSP
45.1001	Political Science	BA	
13.0101	Professional Studies	EDD	National Council for Accreditation of Teacher Education
42.0101	Psychology	BA	
13.1205	Secondary Education	MED	National Council for Accreditation of Teacher Education

DELTA STATE UNIVERSITY
ACADEMIC PROGRAM INVENTORY
2008-2009

CIP	PROGRAMS	DEGREES	ACCREDITING BODY
45.0101	Social Science	BS	
13.1317	Social Science Education	MED	National Council for Accreditation of Teacher Education
13.1317	Social Science Education	BSE	National Council for Accreditation of Teacher Education
44.0701	Social Work	BSW	Council on Social Work Education
13.1001	Special Education	MED	National Council for Accreditation of Teacher Education
24.0102	Communication Studies and Theatre Arts	BA	
51.0204	Speech and Hearing Sciences	BS	
13.1206	Teaching (Alternate Route)	MAT	National Council for Accreditation of Teacher Education

Source: IHL Academic Program Inventory

Date: July 2009

DELTA STATE UNIVERSITY
DEGREES AWARDED: BY TYPE OF DEGREE
5-YEAR TREND
AY 2004-2005 to 2008-2009

Degrees	Ay 2004*		Ay 2005*		Ay 2006*		Ay 2007*		Ay 2008*		5-YR Change	
	#	%	#	%	#	%	#	%	#	%	#	%
Bachelor's	620	74.1%	584	70.8%	559	72.8%	635	74.5%	599	67.6%	76	12.0%
BA	44	7.1%	29	5.0%	38	6.8%	59	9.3%	49	8.2%	5	11.4%
BBA	192	31.0%	180	30.8%	136	24.3%	161	25.4%	134	22.4%	-58	-30.2%
BCA	26	4.2%	24	4.1%	19	3.4%	13	2.0%	20	3.3%	-6	-23.1%
BFA	29	4.7%	30	5.1%	18	3.2%	26	4.1%	25	4.2%	-4	-13.8%
BM	2	0.3%	1	0.2%	2	0.4%	0	0.0%	3	0.5%	1	50.0%
BME	8	1.3%	9	1.5%	4	0.7%	5	0.8%	7	1.2%	-1	-12.5%
BS	114	18.4%	103	17.6%	141	25.2%	166	26.1%	167	27.9%	53	46.5%
BSJC	27	4.4%	22	3.8%	28	5.0%	19	3.0%	29	4.8%	2	7.4%
BSE	107	17.3%	96	16.4%	94	16.8%	77	12.1%	62	10.4%	-45	-42.1%
BSGS**	39	6.3%	35	6.0%	19	3.4%	5	0.8%	1	0.2%	-38	-97.4%
BSIS	0	0	0	0	3	0.5%	27	4.3%	18	3.0%	18	n/a
BSN	10	1.6%	26	4.5%	29	5.2%	52	8.2%	54	9.0%	44	440.0%
BSW	22	3.5%	29	5.0%	28	5.0%	25	3.9%	30	5.0%	8	36.4%
Master's	194	23.2%	207	25.1%	187	24.3%	191	22.4%	262	29.6%	68	35.1%
MAT	0	0.0%	0	0.0%	0	0.0%	7	3.7%	9	3.4%	9	n/a
MBA	52	26.8%	58	28.0%	36	19.3%	28	14.7%	62	23.7%	10	19.2%
MCA	11	5.7%	11	5.3%	6	3.2%	11	5.8%	15	5.7%	4	36.4%
MPA***	0	0.0%	0	0.0%	0	0.0%	5	2.6%	10	3.8%	10	n/a
MED	96	49.5%	106	51.2%	110	58.8%	91	47.6%	121	46.2%	25	26.0%
MME	1	0.5%	0	0.0%	0	0.0%	0	0.0%	0	0.0%	-1	-100.0%
MS	13	6.7%	9	4.3%	5	2.7%	9	4.7%	8	3.1%	-5	-38.5%
MSJC	6	3.1%	9	4.3%	5	2.7%	9	4.7%	2	0.8%	-4	-66.7%
MSN	5	2.6%	9	4.3%	15	8.0%	29	15.2%	33	12.6%	28	560.0%
MSNS	10	5.2%	5	2.4%	10	5.3%	2	1.0%	2	0.8%	-8	-80.0%
Specialist's	17	2.0%	22	2.7%	19	2.5%	21	2.5%	20	2.3%	3	17.6%
EDS	17	100.0%	22	11.3%	19	9.8%	21	100.0%	20	100.0%	3	17.6%
Doctoral	6	0.7%	12	1.5%	3	0.4%	5	0.6%	5	0.6%	-1	-16.7%
EDD	6	3.1%	12	6.2%	3	1.5%	5	100.0%	5	100.0%	-1	-16.7%
TOTAL	837	100.0%	825	100.0%	768	100.0%	852	100.0%	886	100.0%	49	5.9%

*Total degrees awarded in December and May

** BSGS is no longer an active degree

***MPA reinstated in April 2005

Source: Office of the Registrar & Office of Institutional Research and Planning

Date: July 2009

DELTA STATE UNIVERSITY

DECEMBER 2008 & MAY 2009 COMBINED COMMENCEMENT BY MAJOR

MAJOR	DEGREE	TOTAL
Accountancy	BBA	18
	MPAC	10
Accountancy Total		28
Administration & Supervision	EDS	17
Administration & Supervision Total		17
Art	BA	3
	BFA	25
Art Total		28
Athletic Training	BS	4
Athletic Training Total		4
Biology	BS	25
Biology Total		25
Biology Education	BSE	2
Biology Education Total		2
Business Administration	MBA	62
Business Administration Total		62
Chemistry	BS	9
Chemistry Total		9
Commercial Aviation		
Flight Operations	BCA	16
Aviation Management	BCA	4
Commercial Aviation	MCA	15
Commercial Aviation Total		35
Communication Studies and Theatre Arts	BA	1
Communication Studies and Theatre Arts Total		1
Community Development	MS	8
Community Development Total		8
Computer Information Systems	BBA	25
Computer Information Systems Total		25
Counseling	MED	26
Counseling Total		26
Educational Leadership	MED	13
Educational Leadership Total		13
Elementary Education	BSE	41
	EDS	2
	MAT	0
	MED	24
Elementary Education Total		67

DELTA STATE UNIVERSITY

DECEMBER 2008 & MAY 2009 COMBINED COMMENCEMENT BY MAJOR

MAJOR	DEGREE	TOTAL
English	BA	10
English Total		10
English Education	BSE	6
English Education Total		6
Environmental Science	BS	7
Environmental Science Total		7
Family & Consumer Sciences	BS	47
Family & Consumer Sciences Total		47
Finance	BBA	7
Finance Total		7
Foreign Language	BA	1
Foreign Language Total		1
General Business Administration	BBA	20
General Business Administration Total		20
Health PE & Recreation	BS	35
	BSE	2
	BSGS	1
	MED	22
Health PE & Recreation Total		60
History	BA	7
History Total		7
Hospitality Services Management	BBA	1
Hospitality Services Management Total		1
Insurance & Real Estate	BBA	12
Insurance & Real Estate Total		12
Interdisciplinary Studies	BSIS	18
Interdisciplinary Studies Total		18
Journalism	BA	5
Journalism Total		5
Management	BBA	30
Management Total		30
Marketing	BBA	21
Marketing Total		21
Mathematics	BS	2
Mathematics Total		2
Mathematics Education	BSE	6
Mathematics Education Total		6

DELTA STATE UNIVERSITY

DECEMBER 2008 & MAY 2009 COMBINED COMMENCEMENT BY MAJOR

MAJOR	DEGREE	TOTAL
Music	BM	3
	BA	3
Music Total		6
Music Education	BME	7
Music Education Total		7
Natural Sciences	MSNS	2
Natural Sciences Total		2
Nursing	BSN	54
	MSN	33
Nursing Total		87
Political Science	BA	3
Political Science Total		3
Professional Studies	EDD	5
Professional Studies Total		5
Psychology	BA	16
Psychology Total		16
Secondary Education	EDS	1
	MED	15
Secondary Education Total		16
Social Science	BS	15
Social Science Total		15
Social Science Education	BSE	5
Social Science Education Total		5
Social Work	BSW	30
Social Work Total		30
Social Justice and Criminology	BSJC	29
	MS	2
Social Justice and Criminology Total		31
Special Education	BSE	
	MED	21
Special Education Total		21
Speech & Hearing Sciences	BS	23
Speech & Hearing Sciences Total		23
Teaching	MAT	9
Teaching Total		9
Grand Total		886

Source: Office of the Registrar & Office of Institutional Research and Planning

Date: July 2009

DELTA STATE UNIVERSITY
GRADUATES BY RACE, GENDER, & COLLEGE COMBINED
FALL 2008 & SPRING 2009

	Bachelor's		Master's		Educational Specialists		Doctoral		Total	
	#	%	#	%	#	%	#	%	#	%
Race/Ethnicity										
White	365	60.93%	149	56.87%	5	25.00%	3	60.00%	522	58.92%
Black	224	37.40%	109	41.60%	15	75.00%	2	40.00%	350	39.50%
Other	10	1.67%	4	1.53%	0	0.00%	0	0.00%	14	1.58%
Gender										
Male	234	39.07%	81	30.92%	2	10.00%	0	0.00%	317	35.78%
Female	365	60.93%	181	69.08%	18	90.00%	5	100.00%	569	64.22%
College										
Arts & Sciences	245	40.90%	12	4.58%	0	0.00%	0	0.00%	257	29.01%
Business	154	25.71%	87	33.21%	0	0.00%	0	0.00%	241	27.20%
Education	146	24.37%	130	49.62%	20	100.00%	5	100.00%	301	33.97%
Nursing	54	9.02%	33	12.60%	0	0.00%	0	0.00%	87	9.82%
TOTAL	599	67.61%	262	29.57%	20	2.26%	5	0.56%	886	100.00%

Source: DSU Office of Institutional Research & Planning
Date: July 2009

DELTA STATE UNIVERSITY
GRADUATES WITH HONORS
ACADEMIC YEAR 2008-2009

	Honors			Total Honors	All Graduates	% Honors
	Cum Laude	Magna Cum Laude	Summa Cum Laude			
Arts & Sciences						
Bach. of Arts	2	1	2	5	33	15.2%
Bach. of Fine Arts	4	2	0	6	25	24.0%
Bach. of Music	0	0	0	0	3	0.0%
Bach. of Music Education	3	1	0	4	7	57.1%
Bach. of Science	7	3	6	16	81	19.8%
Bach. of Science in Soc. Just. & Crim.	2	1	0	3	29	10.3%
Bach. of Science in Interdisciplin. Stud.	1	0	1	2	18	11.1%
Bach. of Social Work	3	0	0	3	30	10.0%
Business						
Bach. of Business Administration	11	2	2	15	134	11.2%
Bach. of Commercial Aviation	2	0	1	3	20	15.0%
Education						
Bach. of Arts	1	0	0	1	16	6.3%
Bach. of Science	7	4	3	14	86	16.3%
Bach. of Science in Education	5	4	0	9	62	14.5%
Bach. of Science in General Studies	0	0	0	0	1	0.0%
Nursing						
Bach. of Science in Nursing	4	1	0	5	54	9.3%
Total	52	19	15	86	599	14.4%

Source: Office of the Registrar

Date: June 2009

RETENTION

**DELTA STATE
UNIVERSITY** 

DELTA STATE UNIVERSITY
RETENTION OF FIRST-TIME, FULL-TIME ENTERING FRESHMEN
(ALL FIRST-TIME, FULL-TIME FRESHMEN)
FALL 2002-2008

RETENTION AND GRADUATION RATES	YEAR ENTERED													
	2002		2003		2004		2005		2006		2007		2008	
	#	%	#	%	#	%	#	%	#	%	#	%	#	%
All first-time entering freshmen	337	100%	327	100%	381	100%	393	100%	463	100%	470	100%	392	100%
Average ACT Score	20.3		20.5		20.4		20.3		20.3		20.2		20.3	
2nd Year - Returned	236	70%	235	72%	271	71%	249	63%	281	61%	301	64%		
3rd Year - Returned	194	58%	191	58%	222	58%	187	48%	220	48%				
Degrees thru 3 years*	1	0.3%	4	1%	3	1%	4	1%	7	2%				
4th Year - Returned	177	53%	171	52%	205	54%	157	40%						
Degrees thru 4 years*	58	17%	55	17%	76	20%	67	17%						
5th Year - Returned	114	34%	116	35%	137	36%								
Degrees thru 5 years*	126	37%	129	39%	158	41%								
6th Year - Returned	56	17%	48	15%										
Degrees thru 6 years*	143	42%	147	45%										
7th Year - Returned	38	11%												

Source: Office of Institutional Research and Planning

Date: June 2009

DELTA STATE UNIVERSITY
RETENTION OF FIRST-TIME, FULL-TIME ENTERING FRESHMEN
(ALL FIRST-TIME, FULL-TIME WHITE FRESHMEN)
FALL 2002-2008

RETENTION AND GRADUATION RATES	YEAR ENTERED													
	2002		2003		2004		2005		2006		2007		2008	
	#	%	#	%	#	%	#	%	#	%	#	%	#	%
All first-time entering freshmen	237	100%	198	100%	258	100%	240	100%	298	100%	267	100%	237	100%
Average ACT Score	21.1		21.7		21.6		21.4		21.5		21.6		21.5	
2nd Year - Returned	173	73%	149	75%	182	71%	160	67%	197	66%	188	70%		
3rd Year - Returned	140	59%	122	62%	152	59%	118	49%	158	53%				
Degrees thru 3 years*	1	0.4%	4	2%	3	1%	4	2%	5	2%				
4th Year - Returned	126	53%	108	55%	141	55%	104	43%						
Degrees thru 4 years*	44	19%	46	23%	60	23%	48	20%						
5th Year - Returned	77	32%	63	32%	92	36%								
Degrees thru 5 years*	95	40%	92	46%	115	45%								
6th Year - Returned	38	16%	21	11%										
Degrees thru 6 years*	105	44%	102	52%										
7th Year - Returned	24	10%												

Source: Office of Institutional Research and Planning

Date: June 2009

DELTA STATE UNIVERSITY
RETENTION OF FIRST-TIME, FULL-TIME ENTERING FRESHMEN
(ALL FIRST-TIME, FULL-TIME BLACK FRESHMEN)
FALL 2002-2008

RETENTION AND GRADUATION RATES	YEAR ENTERED													
	2002		2003		2004		2005		2006		2007		2008	
	#	%	#	%	#	%	#	%	#	%	#	%	#	%
All first-time entering freshmen	98	100%	115	100%	117	100%	144	100%	157	100%	192	100%	144	100%
Average ACT Score	18.1		18.3		17.7		18.4		18.0		18.2		18.3	
2nd Year - Returned	61	62%	78	68%	84	72%	83	58%	80	51%	107	56%		
3rd Year - Returned	53	54%	63	55%	66	56%	65	45%	58	37%				
Degrees thru 3 years*	0	0%	0	0%	0	0%	0	0%	2	1%				
4th Year - Returned	50	51%	57	50%	61	52%	49	34%						
Degrees thru 4 years*	14	14%	8	7%	15	13%	17	12%						
5th Year - Returned	36	37%	48	42%	44	38%								
Degrees thru 5 years*	31	32%	31	27%	41	35%								
6th Year - Returned	17	17%	26	23%										
Degrees thru 6 years*	38	39%	39	34%										
7th Year - Returned	13	13%												

Source: Office of Institutional Research and Planning

Date: June 2009

DELTA STATE UNIVERSITY
RETENTION OF FIRST-TIME, FULL-TIME ENTERING FRESHMEN
(ALL FIRST-TIME, FULL-TIME OTHER RACE/ETHNICITY FRESHMEN)**
FALL 2002-2008

RETENTION AND GRADUATION RATES	YEAR ENTERED													
	2002***		2003***		2004***		2005***		2006***		2007***		2008***	
	#	%	#	%	#	%	#	%	#	%	#	%	#	%
All first-time entering freshmen	2	100%	14	100%	6	100%	9	100%	8	100%	11	100%	11	100%
Average ACT Score	23.1		20.8		21.3		21.3		20.0		21.5		20.5	
2nd Year - Returned	2	100%	8	57%	5	83%	6	67%	4	50%	6	55%		
3rd Year - Returned	1	50%	6	43%	4	67%	4	44%	4	50%				
Degrees thru 3 years*	0	0%	0	0%	0	0%	0	0%	0	0%				
4th Year - Returned	1	50%	6	43%	3	50%	4	44%						
Degrees thru 4 years*	0	0%	1	7%	1	17%	2	22%						
5th Year - Returned	1	50%	5	36%	1	17%								
Degrees thru 5 years*	0	0%	6	43%	2	33%								
6th Year - Returned	1	50%	1	7%										
Degrees thru 6 years*	0	0%	6	43%										
7th Year - Returned	1	50%												

*Other ethnicities include American Indian/Alaskan native, Asian, and Hispanic

**Because of such a small sample size, one should be cautious about generalizations regarding this sub-cohort

Source: Office of Institutional Research and Planning

Date: June 2009

DELTA STATE UNIVERSITY
RETENTION OF FIRST-TIME, FULL-TIME ENTERING FRESHMEN
(ALL FIRST-TIME, FULL-TIME MALE FRESHMEN)
FALL 2002-2008

RETENTION AND GRADUATION RATES	YEAR ENTERED													
	2002		2003		2004		2005		2006		2007		2008	
	#	%	#	%	#	%	#	%	#	%	#	%	#	%
All first-time entering freshmen	137	100%	136	100%	170	100%	171	100%	179	100%	181	100%	160	100%
Average ACT Score	20.4		21.2		20.7		20.9		20.7		20.5		20.8	
2nd Year - Returned	93	68%	93	68%	110	65%	111	65%	101	56%	119	66%		
3rd Year - Returned	77	56%	74	54%	85	50%	74	43%	77	43%				
Degrees thru 3 years*	1	1%	1	1%	2	1%	0	0%	4	2%				
4th Year - Returned	71	52%	67	49%	77	45%	69	40%						
Degrees thru 4 years*	13	9%	19	14%	24	14%	25	15%						
5th Year - Returned	52	38%	45	33%	53	31%								
Degrees thru 5 years*	40	29%	48	35%	57	34%								
6th Year - Returned	29	21%	19	14%										
Degrees thru 6 years*	50	36%	54	40%										
7th Year - Returned	17	12%												

Source: Office of Institutional Research and Planning

Date: June 2009

DELTA STATE UNIVERSITY
RETENTION OF FIRST-TIME, FULL-TIME ENTERING FRESHMEN
(ALL FIRST-TIME, FULL-TIME FEMALE FRESHMEN)
FALL 2002-2008

RETENTION AND GRADUATION RATES	YEAR ENTERED													
	2002		2003		2004		2005		2006		2007		2008	
	#	%	#	%	#	%	#	%	#	%	#	%	#	%
All first-time entering freshmen	200	100%	191	100%	211	100%	222	100%	284	100%	289	100%	232	100%
Average ACT Score	20.2		20.0		20.2		19.8		20.0		20.0		19.9	
2nd Year - Returned	143	72%	142	74%	161	76%	138	62%	180	63%	182	63%		
3rd Year - Returned	117	59%	117	61%	137	65%	113	51%	143	50%				
Degrees thru 3 years*	0	0%	3	2%	1	0%	4	2%	3	1%				
4th Year - Returned	106	53%	104	54%	128	61%	88	40%						
Degrees thru 4 years*	45	23%	36	19%	52	25%	42	19%						
5th Year - Returned	62	31%	71	37%	84	40%								
Degrees thru 5 years*	86	43%	81	42%	101	48%								
6th Year - Returned	27	14%	29	15%										
Degrees thru 6 years*	93	47%	93	49%										
7th Year - Returned	21	11%												

Source: Office of Institutional Research and Planning

Date: June 2009

FACULTY & STAFF

**DELTA STATE
UNIVERSITY** 

DELTA STATE UNIVERSITY
SUMMARY OF FULL-TIME FACULTY BY RACE
FALL 2008

	White		Black		Other		Total	
	#	%	#	%	#	%	#	%
Male	87	92.6%	3	3.2%	4	4.3%	94	49.2%
Female	79	81.4%	13	13.4%	5	5.2%	97	50.8%
Total	166	86.9%	16	8.4%	9	4.7%	191	100.0%

FACULTY BY GENDER AND ACADEMIC RANK
DSU FACULTY SALARY COMPARISON
FALL 2008

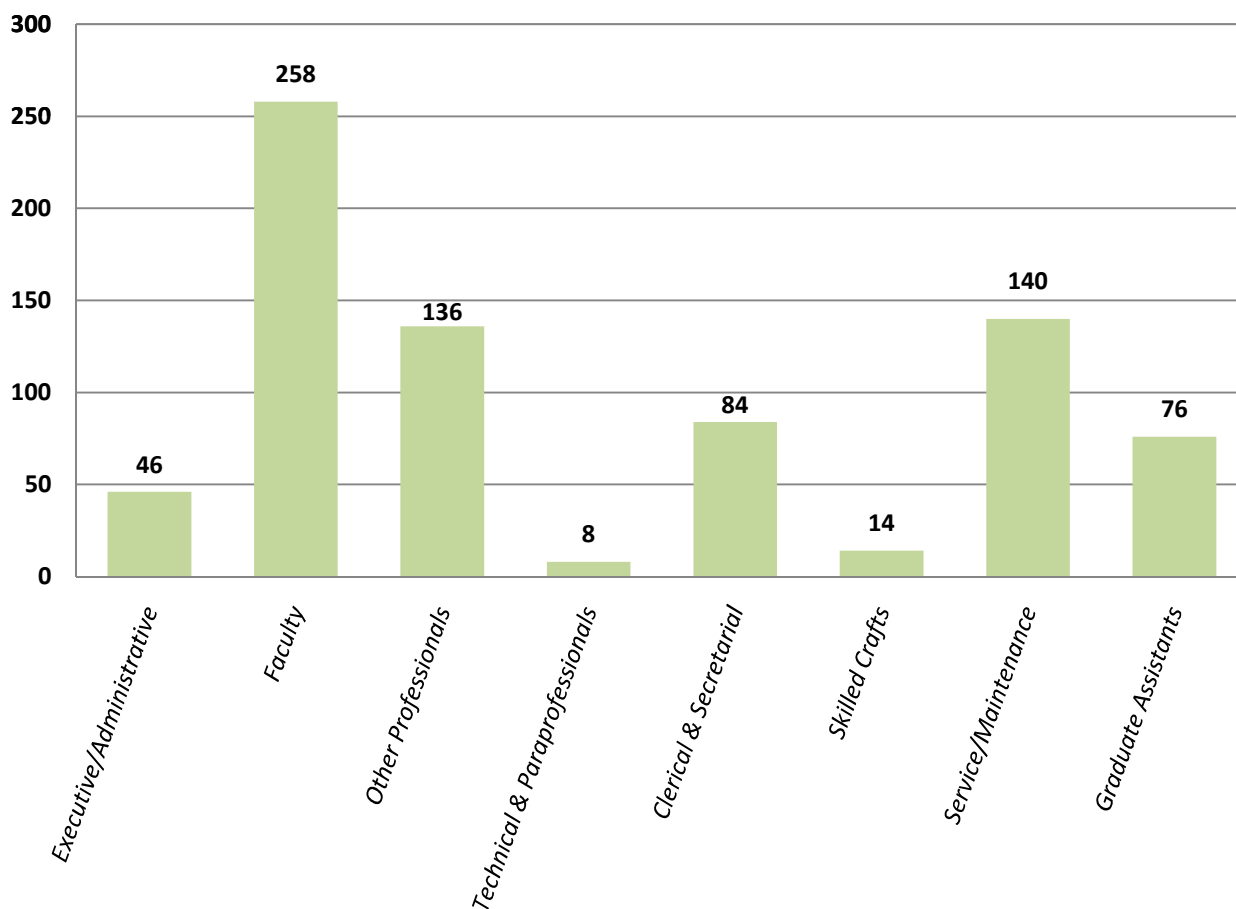
	Contract Length			
	9/10 Month		11/12 Month	
	Number	Average Salary	Number	Average Salary
Men				
Professor	20	\$64,431	8	\$84,167
Associate Professor	14	\$57,997	4	\$65,001
Assistant Professor	23	\$44,279	9	\$62,085
Instructors	13	\$38,613	3	\$77,758
Total Men	70	\$51,728	24	\$71,890
Women				
Professor	9	\$57,810	3	\$77,942
Associate Professor	10	\$57,571	1	\$89,580
Assistant Professor	33	\$49,932	9	\$50,905
Instructors	31	\$47,711	1	\$81,225
Total Women	83	\$50,795	14	\$61,627
Grand Total	153	\$51,219	38	\$68,109

Source: Office of Institutional Research and Planning

Date : July 2009

DELTA STATE UNIVERSITY
DSU TOTAL FACULTY & STAFF
FULL-TIME & PART-TIME STATUS
FALL 2008

Faculty & Staff		
	Number	Percentage
Executive/Administrative	46	6.04%
Faculty	258	33.86%
Other Professionals	136	17.85%
Technical & Paraprofessionals	8	1.05%
Clerical & Secretarial	84	11.02%
Skilled Crafts	14	1.84%
Service/Maintenance	140	18.37%
Graduate Assistants	76	9.97%
Total Faculty/Staff	762	100.00%



Source: Office of Institutional Research and Planning
Date : July 2009

DELTA STATE UNIVERSITY
DSU FACULTY/INSTRUCTOR DEGREES
FULL-TIME & PART-TIME STATUS
FALL 2008

	Full-time	Part-time	Total
Total Instructional Faculty*	191	65	256
Men	94	29	123
Women	97	36	133
Non-resident Aliens	5	0	5
Minority	25	7	32

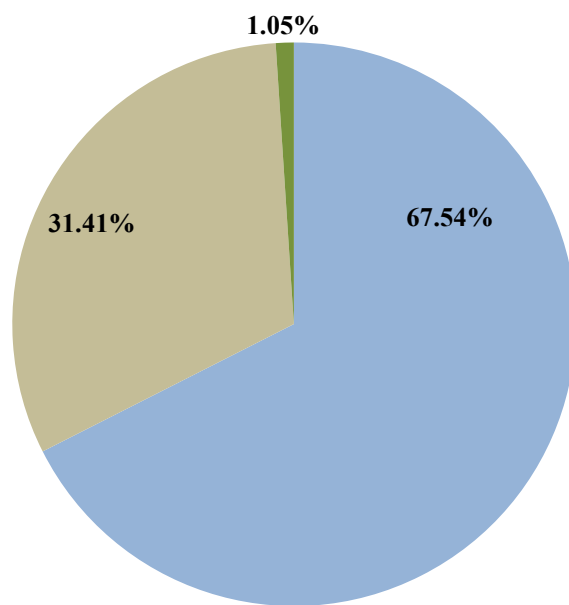
* Two faculty members were on leave for the 2008-2009 fiscal year, totaling 258 faculty members.

	Full-time	Part-time	Total
Highest Degree is Terminal*	129	30	159
Highest Degree is Master's	60	34	94
Highest Degree is Bachelor's	2	1	3

* Two faculty members were on leave for the 2008-2009 fiscal year, totaling 258 faculty members.

	Full-time	Part-time	Total
Percent of Total Terminal Degree*	67.54%	46.15%	62.11%
Percent of Total Master's Degree	31.41%	52.31%	36.72%
Percent of Total Bachelor's Degree	1.05%	1.54%	1.17%

* Two faculty members were on leave for the 2008-2009 fiscal year, totaling 258 faculty members.



■ *Percent of Total Terminal Degree** ■ *Percent of Total Master's Degree* ■ *Percent of Total Bachelor's Degree*

Source: Office of Institutional Research and Planning

Date : July 2009

RESOURCES

**DELTA STATE
UNIVERSITY** 

DELTA STATE UNIVERSITY
FINANCIAL AID SUMMARY 2007-2008 AND 2008-2009

	STUDENTS	AWARD 2007-2008	STUDENTS	AWARD 2008-2009
STUDENT LOANS				
Stafford	2,011	\$9,221,890	1,995	\$9,534,663
Unsubsidized Loan	1,579	\$6,097,687	2,062	\$8,261,269
Plus	98	\$621,588	77	\$466,926
Perkins	113	\$285,526	113	\$226,924
TOTAL	3,801	\$16,226,691	4,247	\$18,489,782
GRANTS & WORK STUDY				
Pell Grant	1,503	\$4,402,821	1,433	\$4,666,174
SEOG	221	\$242,130	212	\$177,524
LEAP	53	\$27,938	41	\$27,300
ACG	136	\$96,450	121	\$87,200
SMART	10	\$38,000	13	\$44,000
Federal Work Study	321	\$478,060	264	\$467,592
TOTAL	2,244	\$5,285,399	2,084	\$5,469,790
INSTITUTIONAL SCHOLARSHIPS / FUNDS				
Academic Scholarship	310	\$1,243,824	280	\$1,128,376
Athletic Scholarship	266	\$1,490,430	292	\$1,666,795
Music Scholarship	142	\$354,882	132	\$355,100
Other Grants*	0	\$0	67	\$407,722
Other Scholarships**	0	\$0	334	\$854,820
Other Service***	206	\$458,917	148	\$405,646
Dependent Scholarship	60	\$129,582	53	\$112,014
Foundation	328	\$330,781	420	\$481,930
TOTAL	1,312	\$4,008,416	1,726	\$5,412,403
TOTAL AID ALL TYPES				
Title IV Accepted	2,719	\$21,512,090	2,736	\$23,959,572
Institutional Sources Accepted	762	\$5,367,856	712	\$5,412,403
State Scholarships	996	\$1,201,382	918	\$905,365
Outside Sources****	877	\$1,045,573	729	\$957,780
Private Loans	105	\$478,921	70	\$355,356
TOTAL *****	3,395	\$29,605,822	3,455	\$31,590,476

* Other grants include Delta Education Initiative, Thad Cochran, Hearin Fellows, Delta Health Education, and Gear Up. These figures have been previously reported within the category "Other Service"

** Other scholarships include WIA, Honors, and Out-of-State waivers. These figures have been previously reported within the category "Other Service"

*** Other service includes: Graduate OOS, Art, Cheerleader, Gooch, SGA, Student Union, Student Editors, Dorm, Vice President, Delta Region, Meal, & Student Affairs

**** Outside sources includes: MAMP, GI Bill, National Guard Benefits, Vocational Rehabilitation, and Off Campus Scholarships

***** Total Students are unduplicated

Source: Student Financial Assistance

Date: July 2008 & July 2009

DELTA STATE UNIVERSITY
ROBERTS-LaFORGE LIBRARY COLLECTIONS AND UTILIZATIONS
2004-2009

LIBRARY COLLECTIONS					
	2004-05	2005-06	2006-07	2007-08	2008-09
<i>Bound Volumes</i>					
Books	267,824	268,710	269,911	271,027	273,496
U.S. Government Documents	30,565	30,922	30,506	30,367	30,772
Mississippi State Government Documents	4,079	4,137	4,351	4,472	4,601
Bound journals	49,527	50,753	51,605	53,497	53,186
Bound Indexes	5,774	5,764	5,764	5,760	5,762
Total Bound Volumes	357,769	360,286	362,137	365,123	367,817
<i>Electronic Books</i>	41,924	50,786	53,193	59,856	63,040
<i>Microforms</i>	831,508	831,610	831,839	831,950	832,093
<i>Audio Visual Materials</i>					
LP records	8,889	8,889	8,894	8,894	8,888
Music CDs	986	1,001	1,083	1,127	1,203
Sound Recordings	3,348	3,348	3,349	3,437	3,239
Video/ DVD Recordings	4,491	4,728	5,057	5,553	5,683
Other	1,288	1,336	1,348	1,396	1,408
Total Audio Visual Materials	19,002	19,302	19,731	20,407	20,421
<i>Journal Subscriptions-Hardcopy</i>	1,280	1,258	1,297	1,249	1,180
<i>Journal Subscriptions-Electronic Full-Text</i>	9,182	17,368	18,475	21,935	24,327
<i>Electronic Databases</i>	98	98	99	124	106
<i>Circulation of Materials Outside the Building</i>	30,149	29,944	32,198	27,188	26,461
<i>Circulation of Reserve Materials</i>	2,287	11,880	14,232	6,607	12,071
<i>Items Borrowed from Other Libraries</i>	1,410	1,271	1,083	1,131	853
<i>Items Loaned to Other Libraries</i>	1,611	1,400	1,319	1,144	1,138
<i>Electronic Index and Full-Text Database Searches</i>	275,958	283,321	351,197	318,840	515,535
Instruction Provided To:					
Classes	145	186	175	155	164
Students	3,166	3,947	5,000	4,250	4,332
Library Users-Onsite	193,868	168,707	183,101	176,039	165,153
Age of Collections:					
Percent of holdings 5 or fewer years old	10.1%	10.0%	7.0%	7.0%	6.5%
Percent of holdings 10 or more years old	65.7%	65.0%	76.0%	77.0%	78.7%

Source: Roberts-LaForge Library

Date: July 2009

DELTA STATE UNIVERSITY
INTERCOLLEGIATE ATHLETICS
 2008-2009

TEAMS	2008-2009 RECORD		
	WINS	LOSSES	TIES
Baseball	38	16	
Basketball:			
Men's	21	9	
Women's	30	7	
Women's Cross-Country	NA		
Golf	NA		
Soccer:			
Men's	8	9	1
Women's	10	7	1
Women's Softball	27	23	
Tennis:			
Men's	1	9	
Women's	11	5	
Swimming & Diving:			
Men's	NA		
Women's	NA		
Football	10	2	

ATHLETIC FACILITIES

Parker Field (Football)	8,000
Walter Sillers Coliseum (Basketball)	3,150
Ferriss Field (Baseball)	1,500
DSU Aquatics Center (Swimming, Diving)	1,000
DSU Softball Field (Softball)	500
DSU Soccer Field (Soccer)	100

Seating Capacity

GENERAL INFORMATION

Division	National Collegiate Athletic Association (NCAA Division II)
Conference	Gulf South Conference
Nickname	Statesmen, Lady Statesmen
Colors	Forest Green and White
Source	Office of Sports Information
Date: July 2009	

INTERCOLLEGIATE ATHLETICS
2008-2009

TEAMS	LAST TITLE/CHAMPIONSHIP
Baseball	2005 NCAA South Central Region Champions 2004 Division II National Champions 2004 Gulf South Conference Champions
Basketball:	
Men's	2006 GSC Champions
Women's	2005, 2006, 2007, 2008 GSC Champions 2006 - 1st Place GSC West Division
Women's Cross-Country	6th Place - GSC Cross Country Champions
Golf	2005 GSC Champions
Soccer:	
Men's	
Women's	
Women's Softball	2006 GSC West Division Champions
Tennis:	
Men's	2003 3rd Place-GSC Tournament
Women's	2008 3rd Place-GSC Tournament
Swimming & Diving:	
Men's	2003 New South Intercollegiate Swim Conference Champions
Women's	2003 NSISC Champions
Football	2000 NCAA Division II National Champions 2000 NCAA Division II South Region Champions 2007 & 2008 GSC Champions

DELTA STATE UNIVERSITY
TUITION & FEES:
2008-2009

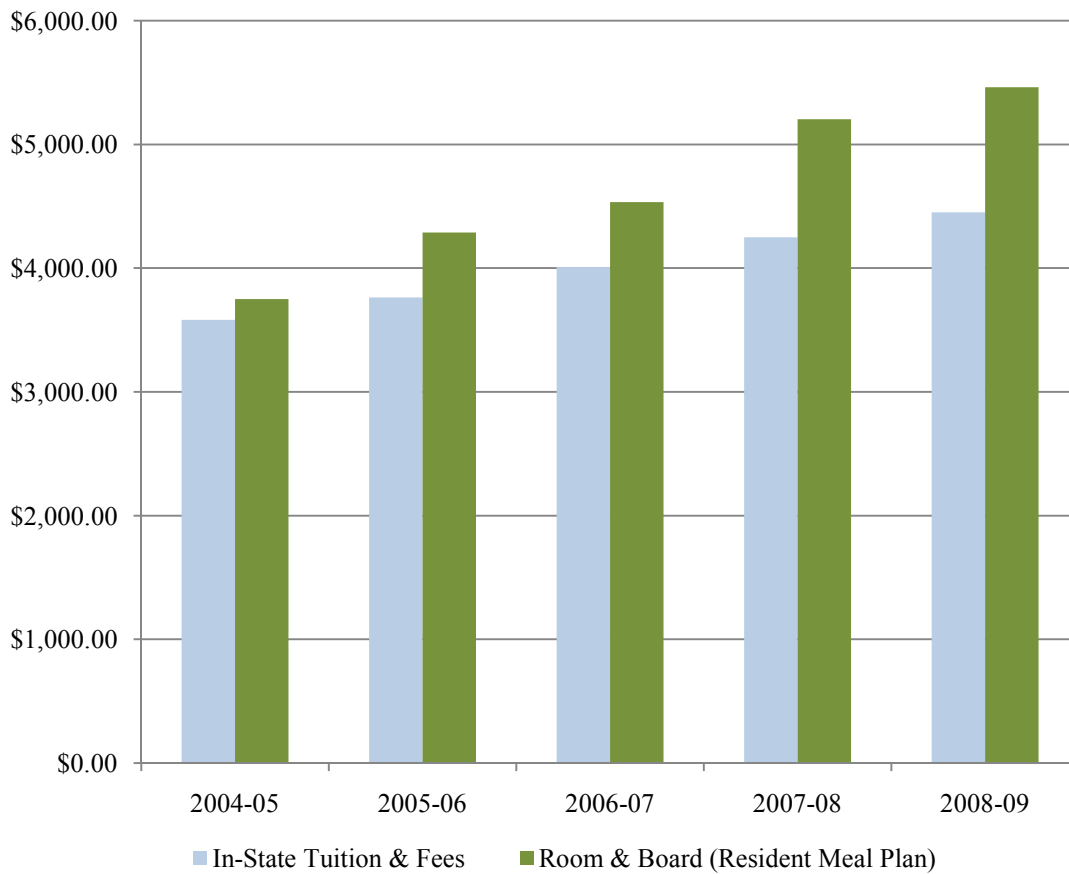
TUITION & FEES FOR FULL-TIME STUDENTS	
Undergraduate 12 - 19 Hours	\$2,225.00
Graduate 9 - 13 hours	\$2,225.00
PART-TIME TUITION /OVERLOAD FEES	
<u>In-State</u>	
Undergraduate	\$185.00
Graduate	\$466.00
<u>Out-of-State</u>	
Undergraduate	\$247.00
Graduate	\$621.00
OUT-OF-STATE (NON- RESIDENT) FEE	\$3,366.00
ROOM	
Cain-Tatum, Fugler-Hammett, Lawler-Harkins	\$1,586.00
Cleveland, Court of Governors	\$1,586.00
Brumby Castle, Court of Governors, New Men's	\$1,648.00
Additional private room rate	\$750.00
MEAL PLANS	
Choice of Following Plans for Residential Students:	
Unlimited +\$100 Flex	\$1,125.00
12 Meals per week + \$200 Flex	
10 Meals per week + \$300 Flex	
For Commuters:	
Mandatory for students enrolled in classes on the main DSU campus	\$100.00
Additional Plans for Commuters:	
120 Meals per semester \$ 600.00	\$884.50
80 Meals per semester \$ 425.00	\$872.00
40 Meals per semester \$ 225.00	\$859.50

Source: Student Business Services

Date: 2008-2009 Academic Year

DELTA STATE UNIVERSITY
TUITION & FEES
5 YEAR TREND
2004-2008

Academic Year	In-State Tuition & Fees	Room & Board (Resident Meal Plan)
2004-05	\$3,582.00	\$3,750.00
2005-06	\$3,762.00	\$4,288.00
2006-07	\$4,008.00	\$4,534.00
2007-08	\$4,248.00	\$5,204.44
2008-09	\$4,450.00	\$5,463.34



Source: Student Business Services
Date: July 2004 - June 2009

GLOSSARY

**DELTA STATE
UNIVERSITY** 

DELTA STATE UNIVERSITY
GLOSSARY
2008-2009

LIST OF COURSES:

ACC	Accounting
AED	Rural School Leadership and Research Administration
AMU	Applied Music
ANT	Anthropology
AUP	Audiology and Speech Pathology
ART	Art
BIO	Biology
BIS	Interdisciplinary Studies
CAV	Commercial Aviation
CED	Counseling
CEL	Elementary Education
CHE	Chemistry
CIS	Computer Information Systems
CML	Media-Library Science
COD	Community Development
COM	Communication Studies
CRD	Reading
CRJ	Criminal Justice
CSD	Secondary Education
CSP	Special Education
CUR	Teacher Education Curriculum
DMI	Delta Music Institute
ECO	Economics
EDL	Educational Leadership
ELR	Research
ENG	English
EPY	Educational Psychology
FCS	Family and Consumer Sciences
FIN	Finance
FRE	French
GBA	General Business
GEO	Geography
GER	German
GIS	Geospatial Information Systems
GMT	Gaming Management
GST	General Studies
HIS	History
HSE	Health and Safety Education
HSM	Hospitality Services Management
IRR	Insurance and Real Estate
JOU	Journalism

LIST OF COURSES (CONTINUED:)

LIB	Library
MAT	Mathematics
MBA	Master of Business Administration Program
MGT	Management
MKT	Marketing
MSC	Military Science
MUS	Music
NUR	Nursing
OAD	Office Administration
PER	Physical Education and Recreation
PHI	Philosophy
PHY	Physics
PSC	Political Science
PSY	Psychology
REM	Remote Sensing
RRS	Rural and Regional Studies
SHS	Speech and Hearing Science
SOC	Sociology
SPA	Spanish
SPE	Speech
SRT	Sound Recording Technology
SSC	Social Science
SUP	Supervision
SWO	Social Work
THE	Theatre

LIST OF DEGREES

Bachelor's

BA	Bachelor of Arts
BBA	Bachelor of Business
BCA	Bachelor of Commercial Aviation
BFA	Bachelor of Fine Arts
BM	Bachelor of Music
BME	Bachelor of Music Education
BS	Bachelor of Science

DEGREE'S CONTINUED

BSJC	Bachelor of Science in Social Justice & Criminology
BSE	Bachelor of Science in Education
BSIS	Bachelor of Science in Interdisciplinary Studies
BSN	Bachelor of Science in Nursing
BSW	Bachelor of Social Work

Master's

MAT	Master of Arts in Teaching
MBA	Master of Business Administration
MCA	Master of Commercial Aviation
MPA	Master of Professional Accountancy
MED	Master of Education
MSCD	Master of Science in Community Development
MSJC	Master of Science in Social Justice and Criminology
MSN	Master of Science in Nursing
MSNS	Master of Science in Natural Sciences

Specialist's

EDS	Educational Specialist
-----	------------------------

Doctoral

EDD	Doctor of Education
-----	---------------------

OTHER TERMINOLOGY

ACT	A standardized achievement examination for college admissions
API	Academic Program Inventory
BSGS	Bachelor of Science in General Studies; this degree is no longer active, however a few students are phasing out of the program
CHP	Credit Hour Production
Cohort	A group of subjects (students) that experience an event within the same time-span. Most noted as “freshmen cohort.” Those students that begin within the same Academic Year and are tracked within a six year time-span.
Duplicated	Consists of all student who are counted at all campuses attended
Ethnicity	Identity with or membership in a particular racial, national, or cultural group
Federal Work Study	Disbursed awards from the Federal College Work Study Program
FTE	Full Time Equivalent
Full-time	An undergraduate student is considered full-time if he/she takes course work equivalent to greater than eleven credit hours and a graduate student is considered full-time if he/she takes course work equivalent to greater than nine credit hours.
IHL	Institutions of Higher Learning
LEAP	Leveraging Educational Assistance Partnership
Level	Undergraduate or Graduate Student
Part-time	An undergraduate student is considered part-time if he/she takes course work equivalent to less than twelve credit hours and a graduate student is considered part-time if he/she takes course work equivalent to less than nine credit hours.
Off-Campus	Consists of the Greenville Center and Other designated locations
On-Campus	Consists of the Main Campus located in Cleveland, Mississippi
SEOG	Supplemental Educational Opportunity Grant
SLEAP	Special Leveraging Educational Assistance Partnership

OTHER TERMINOLOGY CONTINUED

SMART	Disbursed awards to all students from the National Science & Mathematics Access to Retain Talent Grant (National Smart Grant); limited to upper-level undergraduates majoring in physical, life, or computer sciences, mathematics, technology, or engineering or in a foreign language determined critical to national security.
Unduplicated	Consists of students who are counted only once across multiple campuses