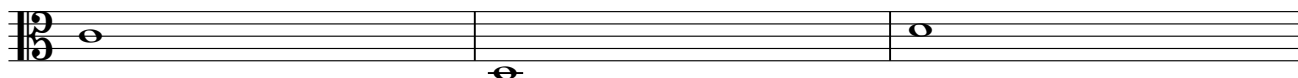
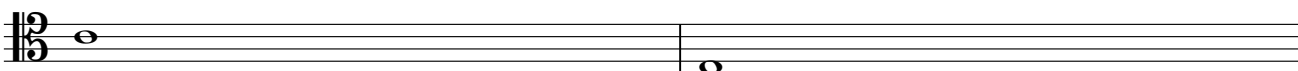
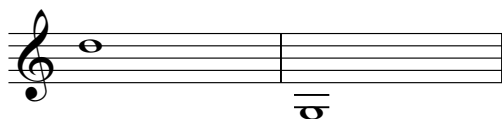
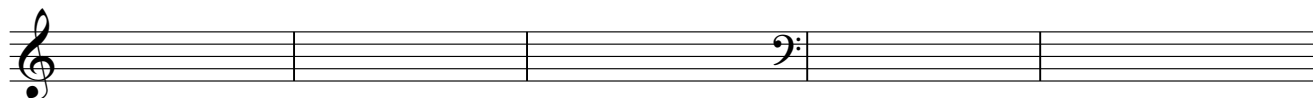


Music Theory 250 Diagnostic Exam

1. Name the pitches



2. Supply the key signatures.



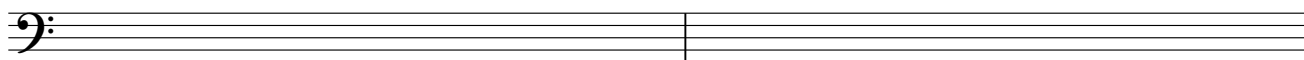
B Major

Bb Minor

F# minor

F# Ma

3. Notate the scales. (ascending only)



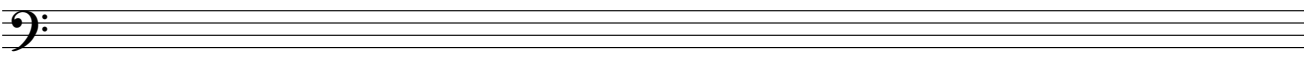
E Major

Relative minor of E Major - Natural Form



Parallel Minor of E Major - Harmonic Form

Relative minor of F Major - Natural Form



Parallel minor of F Major - Melodic Form (ascending and descending)

4. Name the intervals. Be specific.

Exercise 4 consists of two staves. The top staff is in treble clef and contains four measures of intervals: a major second (C4-D4), a major third (C4-E4), a perfect fourth (C4-F4), and a perfect fifth (C4-G4). The bottom staff is in bass clef and contains four measures of intervals: a major second (G2-A2), a major third (G2-B2), a perfect fourth (G2-Bb2), and a perfect fifth (G2-D3).

5. Notate the enharmonic equivalent next to each.

Exercise 5 shows a single staff in bass clef with four measures. The first measure contains a whole note G#2. The second measure contains a whole note A-flat2. The third measure contains a whole note B-flat2. The fourth measure contains a whole note B-natural2.

6. Notate the chords.

Exercise 6 consists of two empty musical staves, one in treble clef and one in bass clef, each divided into five measures.

7. Notate the indicated pitches for each figured bass symbol. Name the chord.

Exercise 7 shows a single staff in bass clef with five measures. The first measure contains a whole note C2. The second measure contains a whole note D2. The third measure contains a whole note E2. The fourth measure contains a whole note F2. The fifth measure contains a whole note G2.

8. Analyze this example. Indicate chord quality, function (roman numeral), and inversions. (20)

Key _____

Cadence type _____

Exercise 8 shows a musical example in two staves. The top staff is in treble clef and the bottom staff is in bass clef. The key signature has two flats (B-flat and E-flat). The progression consists of three measures: Measure 1 has a triad of G2, B-flat2, and D3; Measure 2 has a triad of A2, C3, and E-flat3; Measure 3 has a triad of B-flat2, D3, and F3.

8. Define the terms.

Diatonic

Chromatic

Harmonic rhythm

Motive

Phrase

Cadence types (identify by the typical roman numerals and/or distinguishing features)

Perfect Authentic

Imperfect Authentic

Plagal

Half

Deceptive

