

Freshman Music Theory
Entrance Exam

Name: _____

PART I

1. Name the pitches:

The first staff (treble clef) contains notes: G4, A4, B4, C5, D5. The second staff (bass clef) contains notes: E3, F3, G3, A3, B3. The third staff (alto clef) contains notes: C4, D4, E4, F4, G4. The fourth staff (bass clef) contains notes: A2, B2, C3, D3, E3.

2. Write the key signatures for the given keys:

The staff shows a treble clef, a key signature change to one flat (B-flat), and a bass clef.

F# Minor B^b Major C Minor F# Major B^b Minor

3. Write the following scales:

A blank musical staff with a bass clef.

E Major (ascending)

Relative minor of E Major – Natural (ascending)

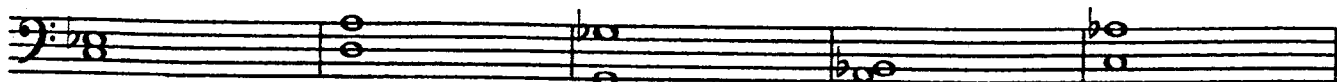
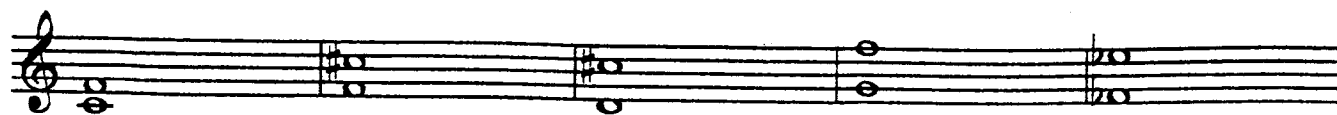
A blank musical staff with a treble clef.

Parallel minor of E Major – Harmonic (ascending) Relative minor of F Major – Harmonic (ascending)

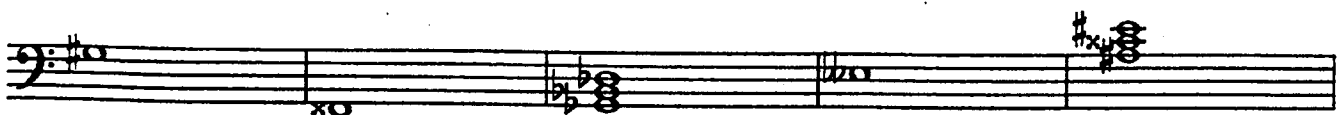
A blank musical staff with a bass clef.

Parallel minor of F Major – Melodic (ascending and descending)

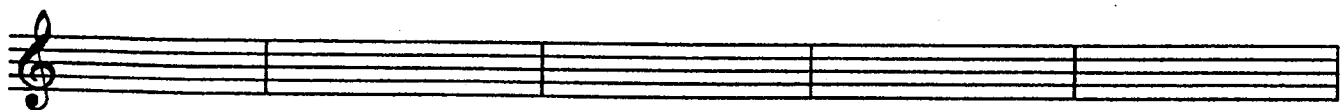
4. Name the following intervals. Provide the number and quality of each interval:



5. Notate the enharmonic equivalent next to each example:



6. Notate the following chords according to the chord symbols:



BM E^bm vii° in A Major III* in D Minor V₆ in C Minor

7. Analyze the following chords in Roman numerals and indicate inversions.

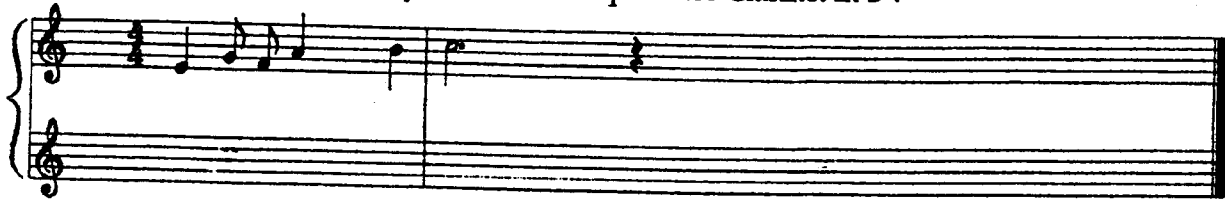
Label the circled nonharmonic tones and identify the cadence type of each example:



CM: _____ F#m: _____ EbM: _____ AM: _____ DbM: _____

Cadence: _____

8. Transpose the following melody to the written pitch for Clarinet in B \flat :



9. Define the following terms:

Motive:

Phrase:

Sequence:

Parallel Period:

Homophonic texture:

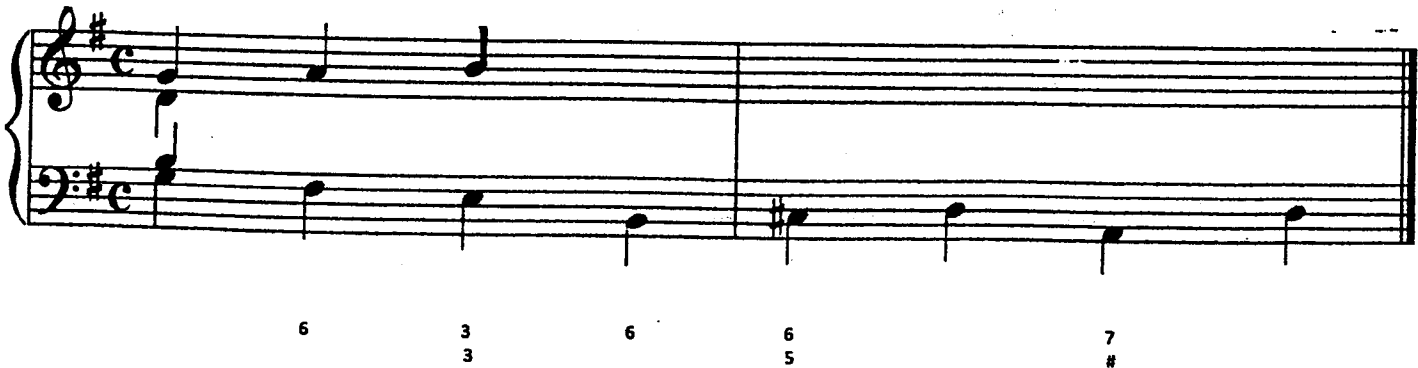
Polyphonic texture:

PART II

10. Analyze the chords in Roman numerals and complete the upper voices according to the figured bass. Consider voice leading, spacing, and ranges when you fill in the voices.

Modulation occurs in this example. Identify which type of modulation is used in this example:

_____ Modulation

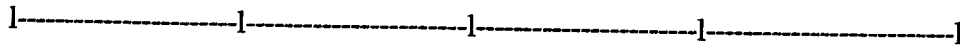


GM:

Cadence: _____

11. Analyze the following excerpt by answering the following questions.

- This excerpt is in the key of _____.
- Half cadences occur at m. _____ and m. _____.
- Perfect authentic cadences occur at m. _____ and m. _____.
- A parallel period occurs at mm. _____ - _____.
- A contrasting period occurs at mm. _____ - _____.
- A phrase extension (cadential extension) occurs at mm. _____ - _____.
- The texture of mm. 9-10 is called _____.
- Analyze the harmony at mm. 9-12 in Roman numerals and write the harmonic rhythm of mm. 9-12.



W. A. Mozart: Piano Sonata, K. 331, I, mm. 1-18

Andante grazioso