

DELTA STATE UNIVERSITY

INTERNATIONAL  
CONFERENCE

ON THE

*Blues*

OCTOBER 4, 2019



## GREETINGS FROM DELTA STATE PRESIDENT WILLIAM N. LAFORGE

Welcome to Delta State University, the heart of the Mississippi Delta, and the center of Blues country!

Delta State offers a wide array of educational, cultural, and athletic activities. Our university plays a key role in the leadership and development of the Mississippi Delta and of the State of Mississippi through a variety of partnerships with businesses, local governments, and community organizations.

As a university of champions, we boast talented faculty who focus on student instruction and mentoring; award-winning degree programs in business, arts and sciences, nursing, and education; unique, cutting-edge programs such as aviation, geospatial studies, digital media arts, and the Delta Music Institute; intercollegiate athletics with numerous national and conference championships in many sports; and, a full package of extracurricular activities and a college experience that help prepare our students for careers in an ever-changing, global economy.

Delta State University's annual **International Conference on the Blues** features academic and scholarly activity and a variety of musical performances to ensure authenticity and a direct connection to the demographics surrounding the "Home of the Delta Blues."

Whether you are a scholar, musician, industry guru, historian, demographer, tourist, or just a casual listener of the music that "grew up" in the Mississippi Delta, Delta State University is pleased to welcome you to the "Blues Mecca."

I hope you enjoy your time on campus. Welcome to Delta State Blues University!

Very best regards,



William N. LaForge  
President

## A MESSAGE FROM THE CO-CHAIRS

Welcome to the International Conference on the Blues. We are first and foremost a music conference, but we also provide programming that engages Blues enthusiasts as well as scholars.

As we review the conference programs from the last five years, we are delighted that the Blues has opened dialogues on gospel, literature, jazz, fiber arts, funk, photography, folk, psychedelia, soul, rock and roll, hip hop, the music business, protest music, printmaking, and the ethics of cultural tourism, just to name a few. It is our guiding principle that the Blues fosters larger conversations about the worldwide influences of African American music, history, and culture.

We are grateful for the hard work and dedication of our Blues "Dream Team" as we continue great programming for future conferences.

Cordially,



Shelley Collins and Don Allan Mitchell  
Co-Chairs

— WELCOME TO THE —



INTERNATIONAL  
CONFERENCE  
ON THE *Blues*

Please wear your name badge at all events. It will serve as your ticket to all conference activities.

#### INTERNET ACCESS

Network name:  
DSU Guest (no password)  
*Guest WiFi is available at the DMI.*

#### FIND US ONLINE

[deltastate.edu/blues](http://deltastate.edu/blues)

#### SOCIAL MEDIA

Share your favorite conference updates and pictures on Twitter, Instagram, Snapchat and Facebook using the hashtag #bluesDSU.

#### CONTINUING EDUCATION CREDITS

Delta State University's Division of Continuing Education will be offering Continuing Education Credits (CEU) for conference attendees. Educators who wish to receive CEU credit must register for the conference. CEU credits will be assessed a separate fee, payable at the completion of the conference. For more information on receiving CEU credits, please contact Marilyn Read at 662-846-4874 or [mread@deltastate.edu](mailto:mread@deltastate.edu).

#### IMPORTANT PHONE NUMBERS

DSU Switchboard: 662-846-3000  
University Police: 662-846-4155  
The Delta Center: 662-846-4311

Mississippi Grounds: 662-545-4528  
Cleveland Taxi Service: 662-719-7433  
Cab McCain: 662-588-2564

# FULL CONFERENCE SCHEDULE

Events are held in several locations at Delta State University and downtown Cleveland. Please consult the schedule for details.

**THURSDAY:** Pre-Conference Concert: Kool and the Gang

**FRIDAY:** Daytime events are at the Delta Music Institute, and evening events are in downtown Cleveland.

## FRIDAY, OCT. 4, 2019

### REGISTRATION

8 AM–3 PM | DMI Lobby

Join us for coffee and donuts from 8-8:30 AM. The registration and CD/book tables will be open from 8:15-4 PM. Musicians and writers are invited to bring items to sell.

**OPENING RECEPTION: Meet and Mingle**  
8:30–9 AM | Studio A

**Welcome Remarks and Announcements**  
**Dr. Shelley Collins and Prof. Don Allan Mitchell,**  
co-chairs

**Dr. Rolando Herts, Director, Delta Center  
for Culture and Learning**

*Join us for coffee and get acquainted  
with other attendees.*

**PAPER SESSION: The Blues Abroad**  
9–9:50 AM | 201

**One Sound, Two Worlds: The Meaning of the  
Blues in a Divided Germany**

**Prof. Michael Rauhut**

**University of Agder, Kristiansand, Norway**

*The presentation refers to the development of the  
Blues in a divided Germany between 1945 and 1990 to  
illustrate how political and social conditions shape the  
meaning of this music.*

**Painting Clarksdale Something Other Than  
Blue: Colombian Street Art in the Delta**

**Dr. Clay Motley**

**Florida Gulf Coast University**

*Clarksdale residents recently brought internationally  
renowned street artists from Bogota, Colombia to town  
to paint large murals downtown. This presentation  
examines how the project challenges Clarksdale's  
identity as the "Birthplace of the Blues" and connects  
the Delta to the Global South.*

**Moderator: Cetin "Chet" Oguz**

### PAPER/PERFORMANCE SESSION:

**International Perspectives**

9–9:50 AM | 202

**Roots to Rock - Heritage and Hybrids**  
**Betraying the Blues: An Australian  
Musical Perspective**

**Mr. Steve Grieve**

**Western Sydney University, Australia**

*Blues musical tonality and its relationship to genre  
hybridity are poorly delineated in the literature. These  
themes will be explored in the context of Blues and roots  
hybrids and the diaspora.*

**Playing the Blues with Chinese  
Traditional Instruments**

**Ms. Amely Zhou**

**York University, Ontario, Canada**

*Through a combination of lecture and performance,  
influences of the Blues in contemporary Chinese  
instrumental music will be revisited and explored.*

**Moderator: April Mondy**

**PAPER/WORKSHOP: Teaching and  
Performing the Blues**

10–10:50 AM | Studio A

**From the Delta to Harlem: Enslaved Africans'  
Musical Retentions in Hammond B3 Jazz  
Organ Music**

**Mr. David Cosby**

**Besant Hill School**

*Soul Jazz is strongly rooted in music going back to the  
music sung by enslaved Africans in the fields. Though  
recordings, analysis, and performance, this musical  
continuum is clearly elucidated.*

**Blues Voice: Sourcing African American  
Culture for Authenticity in Blues Performance  
and Education**

**Mr. Eli Yamin**

**Lehman College, Stony Brook University**

*Eli Yamin presents an interactive workshop  
demonstrating how African American vocal  
characteristics and the shuffle beat define the genre  
more than anything else.*

**Moderator: Dr. Julia Thorn**

---

**PAPER SESSION: Identity and Appropriation in the Blues**  
10–10:50 AM | DMI 202

**From Cornbread to Country: Appropriation as Oppression in the American Country Music Industry**

**Ms. Nicole Sonneveld**  
**Roosevelt University**

*Tackling issues of identity, racism and cultural appropriation, From Cornbread to Country explores the country music industry's pathological denial of Black artists' contributions to the genre.*

**"Nobody Leaves This Place Without Singin' the Blues": Appropriation in *Adventures in Babysitting***

**Dr. Barton Price**

**Purdue University Fort Wayne School of Music**

*This presentation addresses cultural appropriation during a scene in the film *Adventures in Babysitting*. It looks at the performance of the Blues by white middle-class teenagers before a black audience in the southside of Chicago that reveals the myth of racial harmony mediated by the Blues.*

Moderator: Dr. Brian Becker

**PAPER SESSION: The Blues in West Tennessee**  
11–11:50 AM | DMI 202

**What Made West Tennessee Rich in Blues Harmonica Performance Practice**

**Dr. Mitsutoshi Inaba**

**Austin Peay State University**

*The presentation explores the tradition of harmonica performance practice in West Tennessee from the 1920s to 1940s. The study developed from an inquiry from Charlie Musselwhite, famed harmonica player from Kosciusko, MS.*

**How She Made That Guitar Talk: Memphis Minnie and the Lead Guitar in Early Blues Music**

**Dr. Kate Lewis**

**Brunel University, London (UK)**

*One of few women to play lead guitar on early records, Memphis Minnie holds a unique position in Blues history. This paper will focus on her playing style and influence on the development of the Blues.*

Moderator: Dr. Bret Pimentel

**PAPER SESSION: The Blues as Transformation**  
11–11:50 AM | DMI 201

**Secular Faith in Justice in the Urban Blues: Bland's "Further Up the Road" and Burton's "Garbage Man"**

**Prof. Julia Simon**

**University of California, Davis**

*Despite perceptions to the contrary, the Blues contain a call for justice. By calling out injustices, the Blues engage in a truth-telling that implies a secular faith in accountability in the future.*

**Drivin' that Protodelic Train: Howlin' Wolf's "Smokestack Lightnin'" as Psychedelic Vehicle**

**Dr. Tom Zlabinger**

**York College / CUNY**

*"Smokestack Lightnin'" (1956) has been covered by many psychedelic bands, from the Yardbirds to the Grateful Dead. What made Wolf's song such fruitful source material and how was it transformed?*

Moderator: Dr. Robin Webb

**LUNCH AND LEARN: Books and the Blues**  
12–12:50 PM | Studio A

*Join us for a discussion with authors and editors influenced by the Blues.*

*Food trucks at DMI: Enjoy regional Delta cuisine in Studio A during this panel discussion. Cash only. An ATM is located in the Student Union.*

**Dick Waterman: A Life in Blues**

**Dr. Tammy L. Turner**

**Murray State University**

**Juke Joint Poetry Magazine**

**Dean Julius**

**Po' Monkey's: Portrait of a Juke Joint**

**Will Jacks**

Moderator: Craig Gill, Director, University Press of Mississippi

–CONTINUED NEXT PAGE–



---

**PAPER SESSION: The Blues as Narrative**  
1–1:50 PM | DMI 202

**The Mississippi Delta Blues: Communication and Community Involvement**

**Mr. Geoff Latham**

**Coahoma Community College**

*How can artists use the Blues used as inspiration for narrative works of visual art? This presentation teaches art students to explore the Blues as a way for communities to interact and connect.*

**Exploring the Performance and Expression of Gender and Violence in Nina Simone's "Mississippi Goddam"**

**Madeleine Bohnett**

**Shenandoah University**

*This paper examines the performance and expression of gender in Nina Simone's "Mississippi Goddam." Written in the 1960s, this song is an act of protest against a culture of rape and murder.*

Moderator: Dr. Shalando Jones

**THE BLUES, EDUCATION, AND OUTREACH**  
1–1:50 PM | DMI 201

**Focus on the Future: The Importance of the Blues from a Sociological and Historical Perspective**

**Prof. Fernando Jones**

**Columbia College Chicago & Blues Kids Foundation**

*This presentation discusses Blues in music education, pedagogy and career readiness, and the Blues beyond the standard chord progression I-IV-V.*

**Maxie's Juke Joint: The Act of Edutaining**

**Ms. Stacey Wilson and Ms. Ida Bea Tomlin**

**Mississippi Arts and Entertainment Experience**

*Edutain: to educate and entertain. Using Maxie's Juke Joint, an exhibit and music venue, we teach the Juke Joint's importance to community and music through interactive exhibits and live performances.*

Moderator: Dr. Vernell Bennett

**PRESENTATION:**  
**Blues and the Spirit**  
2–2:50 PM | DMI 201

**"Why Don't You Live So God Can Use You?"  
Religious Songs Collected Outside  
of Church Settings in the 1941-1942  
Coahoma Study**





**Prof. Scott Barretta, University of Mississippi and Delta State University**

*Alan Lomax and John Wesley Work III captured performances of religious songs by musicians including Muddy Waters, as well as recollections of older styles including hymns, spirituals, and shouts.*

**Moderator: Dr. Gabriel Scala**

**OPEN REHEARSAL: DSU Jazz Ensemble**  
2–2:50 PM | Studio A

*The Delta State Jazz Ensemble, a student lab big band, will hold an open rehearsal/masterclass. Come observe, sit in and sight read (horn and rhythm section players), and/or offer feedback.*

**Eli Yamin and Tom Zlabinger, clinicians**

*Dakota Young - alto saxophone  
Ethan Baker - alto saxophone  
Chloe Oldenberg - alto saxophone  
Will Pearce - tenor saxophone  
Jackson Moore - tenor saxophone  
Rogers Varner - tenor saxophone  
Jordan Holland - baritone saxophone  
Tristen Gooden - trumpet  
Adriana Ezekiel - trumpet  
Howard Tate - trumpet  
Josh Davis - trumpet  
Jose Meraz - trombone  
Catheryne Booth - trombone  
Pierre Momon - trombone  
Brandon Brister - trombone  
Ethan Pope - tuba  
Semi Dong - piano/keyboards  
Tony Especto - bass  
Brenden Riedlinger - drums/percussion  
Kenneth Polk - drums/percussion*

**Director and Moderator: Dr. Bret Pimentel**

**MASTER CLASS: Singing the Blues**  
3–3:50 PM | Studio A

*Eli Yamin, author of So You Want to Sing the Blues, will work with DSU vocalists.*

**DSU Voice Students**

*Neshun Holmes, Gabriel McGee, Timothy Peoples, Antonio Rojano, Libby Switzer*

**Moderator: Dr. Douglas Mark**

**DINE AROUND TOWN**  
4–7 PM | Cleveland (on your own)

*Suggestions provided by the Cleveland-Bolivar Chamber of Commerce; reservations recommended.*

**MAIN PERFORMANCE: Free Concert at the Courthouse: The Como Mamas**  
7–8:30 PM | Downtown Cleveland Courthouse Grounds, 200 S. Court Street

*Limited seating; you are encouraged to bring a chair or blanket. Rain Location: DMI Studio A*

**VISIT MISSISSIPPI PRESENTS**  
**BLUES IN THE ROUND**  
8:30 PM-Until | Mississippi Grounds,  
219 S. Court St.

**Open Mic/Jam Session:**

*Join **David Dunavent** for an intimate in-the-round acoustic event at Mississippi Grounds. A “pilgrim chair” will be open for invited conference guests to join in the music. Underwritten by Visit Mississippi.*

# CAMPUS MAP

## MAP LEGEND

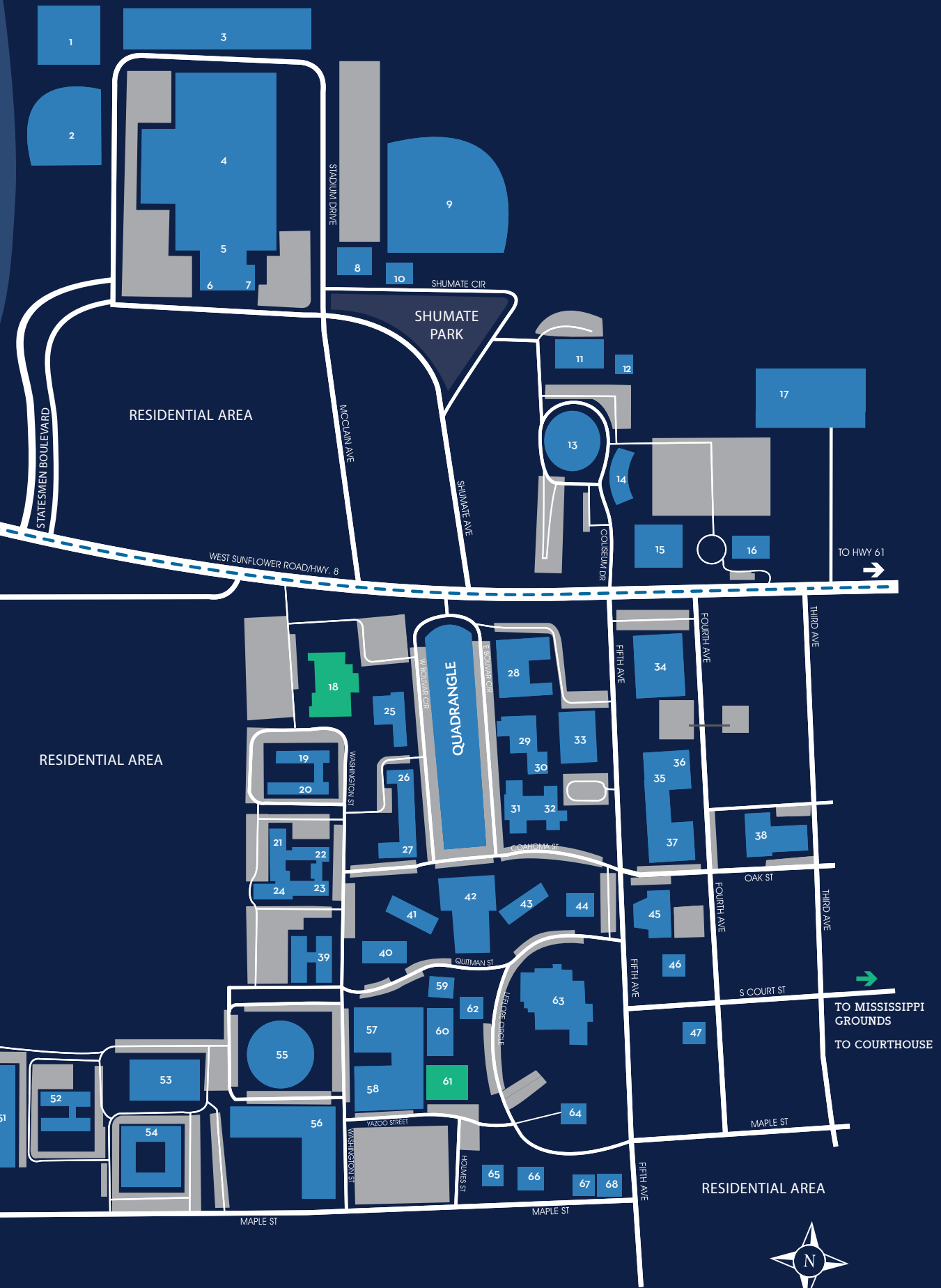
-  State Highway
-  City Street
-  Campus Street
-  Parking Area Thru-way
-  Campus Facility
-  Event Facility
-  Parking Area

## CAMPUS FACILITIES

1. Soccer Field
2. Softball Field
3. Statesman Park
4. Travis E. Parker Field/Horace McCool Stadium - Football
5. Billy Dorgan, Jr. Student Performance Center
6. Chadwick-Dickson Intercollegiate Athletic Building
7. J.A. "Bud" Thigpen, Jr. Baseball Annex
8. Bryce Griffis Indoor Practice Facility
9. Dave "Boo" Ferriss Field - Baseball
10. Robert L. Crawford Center & Dave "Boo" Ferriss Museum
11. Tennis Courts
12. Darrell Foreman Golf Course - CLOSED
13. Walter Sillers Coliseum
14. Hugh L. White Hall
15. Kent Wyatt Hall
16. Hugh Ellis Walker Alumni-Foundation House
17. Grammy Museum Mississippi
18. Bologna Performing Arts Center
19. Harkins Residence Hall
20. Lawler Residence Hall
21. Hammett Residence Hall
22. Tatum Residence Hall
23. Cain Residence Hall
24. Fugler Residence Hall
25. William H. Zeigel Music Center
26. Thomas L. Bailey Hall
27. Hamilton-White Child Development Center
28. W.M. Kethley Hall
29. Fielding L. Wright Art Center
30. Holcombe-Norwood Hall
31. James W. Broom Hall
32. Kathryn Keener Hall
33. E.R. Jobe Hall
34. James M. Ewing Hall
35. Eleanor Boyd Walters Hall
36. Roy and Clara Belle Wiley Planetarium
37. R.L. Caylor/Jessie S. White Hall
38. Robert E. Smith School of Nursing
39. Brumby-Castle Residence Hall
40. O.W. Reilly Student Health Center
41. Ward Hall
42. H.L. Nowell Union  
and Barnes & Noble Bookstore
43. Cleveland Residence Hall
44. Charles W. Capps, Jr. Archives & Museum
45. Gibson-Gunn Commercial Aviation
46. Wesley Foundation
47. Baptist Student Center
48. Intramural Fields/Walking Trail
49. E.B. Hill Family Apartments
50. Hugh Cam Smith, Sr. Facilities Management
51. Faculty and Staff Apartments
52. New Men's Residence Hall
53. Tennis Courts
54. Court of Governors Residence Hall
55. Young-Mauldin Dining Hall
56. Foundation Hall
57. Forest Earl Wyatt Center for Health,  
Physical Education and Recreation
58. Ronald Mayers Aquatics Center
59. Odealier J. Morgan Laundry
60. George B. Walker Natatorium
61. Henry L. Whitfield Hall - Delta Music Institute
62. Lena Roberts Sillers Chapel
63. Roberts-LaForge Library
64. President's Home
65. Administrative Housing
66. Cassity Hall
67. Administrative Housing
68. Administrative Housing







## PRESENTERS, PERFORMERS, & SPECIAL GUESTS



### THE COMO MAMAS

Born in Como, Mississippi with the spirit in their veins, sisters Della Daniels and Angelia Taylor and cousin Ester Mae Smith have expressed their passion through music for more than 50 years, through the church and the uplifting sound of their grandfather's guitar. "Back then you had to go to church; it wasn't a choice you made," says Ester Mae. "We would go and sing in the choir but they didn't have a pianist. That's why it comes easy for me to sing without background music. I grew up without it."

The Como Mamas share the Gospel through powerful and compelling vocals, driving both passion and grace into the words they sing. They have garnered much interest over the past years, especially from New York field recorder Michael Reilly of Daptone Records, who first heard the Mamas sing during a visit to Como in 2005. Since then the Como Mamas have released two albums with Daptone Records: *Como Now: The Voices of Panola County, Mississippi* in 2008 and *Get an Understanding* in 2013.

With two albums already under their belt, the Como Mamas certainly haven't slowed down. Most recently, Daptone brought the Mamas to New York to try something new and record with the Menahan Street Band. They felt a connection with the band immediately and fell right into sync with the music.

Though it wasn't necessarily what they had planned for the session, Reilly remembered hearing them sing "Well, Well" and "Out Of The Wilderness" when he was in Mississippi, and asked them to give it a try with the band. It didn't take long to realize that they'd found something special. "We learned these songs growing up in church, but the beat really adds something to our music that I think everyone will love, especially the younger folks," said Della.

This opportunity to deliver the message of their music to a larger audience has the Como Mamas beyond excited. "It's different, but I think this kind of music will open the ears of the young folk," claims Ester Mae. "We're trying to capture everybody. We all need to know about Jesus and what He does for us every day."

---

## PRESENTERS AND PERFORMERS

**SCOTT BARRETTA** has taught Sociology of the Blues for the DSU Blues Studies Program and is an instructor of sociology at the University of Mississippi. He is a writer and researcher for the Mississippi Blues Trail; the host of the “Highway 61” radio program on MPB; and former editor of *Living Blues*.



**MADELEINE BOHNETT** is a senior at Shenandoah University. They recently attended a musicology colloquium in Vienna where they investigated the musicological work on the sounds of EuroPride. Some of their research interests are the intersection of religion and women, gender and sexuality studies.



**DAVE COSBY** graduated with a B.M. in jazz studies from Rutgers University in 1992 and his M.A. in historical musicology in 2015 from UVA. In 1996, he won a fellowship from the National Endowment for the Arts and in 2019 participated in the NEH-DSU workshop “The Most Southern Place on Earth.”



**STEVE GRIEVE**, a Ph.D. candidate at Western Sydney University, researches blues tonality and hybridity. His 2017 practice-led research master’s exploring jazz, roots, space, and hybridity resulted in the album *Caterpillar Maze*. He is the author of *Getting into Blues Guitar* (2002, Mel Bay).



**MITSUTOSHI INABA**, an ethnomusicologist specializing in blues music, has written *Willie Dixon: Preacher of the Blues* (2011, Scarecrow Press) and *John Lee “Sonny Boy” Williamson: The Blues Harmonica of Chicago’s Bronzeville* (2016, Rowman & Littlefield). Inaba earned a Ph.D. from the University of Oregon.



**WILL JACKS** is a lens-based Delta artist. He is employed by Delta State and the Mississippi Delta National Heritage Area, where he engages projects to develop a deeper understanding of the social, political, artistic, and historical dynamics of the Delta in order to foster positive change and economic growth.



**FERNANDO JONES** started playing blues on guitar when he was four years old. Today, he’s an internationally travelled performer and songwriter. Jones is also on faculty at Columbia College Chicago as blues ensemble director. During summers, he partners his Blues Camp for kids with institutes of higher learning.







**DEAN JULIUS** is a Mississippi native, a middle school English teacher, and the founding editor of *Juke Joint Magazine*. He earned an MFA from UNC Greensboro. His works have appeared in *Crab Orchard Review*, *Gulf Stream Magazine*, and *storySouth*, among other places. Julius earned an M.Ed. from Delta State.



**GEOFF LATHAM**, a Delta State alumnus, is an artist and art instructor at Coahoma Community College and Coahoma Early College High School in Clarksdale, MS. He began teaching in 2004 and has covered a variety of subjects for students from pre-K to college. Experimentation and visual truth are hallmarks of his creations.



**DR. KATE LEWIS** is a multi-genre guitarist, educator, and researcher based in the UK. Her research focuses on the role of the guitar in early popular music as well as issues of gender surrounding the instrument. With a Ph.D. in musicology from University of Surrey, she is lecturer in music at Brunel University London.



**DR. CLAY MOTLEY** is director of the Honors College and associate professor of English at Florida Gulf Coast University. He is principal investigator for “Beyond the Blues: Discovering and Preserving Clarksdale, Mississippi’s History,” a project awarded a National Endowment for the Humanities grant.



**DR. BARTON PRICE** is a continuing lecturer in the history of rock ‘n’ roll at Purdue University Fort Wayne School of Music and director of the Centers for Academic Success and Achievement. He earned a Ph.D. in American religious studies from Florida State University and has also taught courses in American history.



**PROF. MICHAEL RAUHUT**, a music scholar, radio journalist, filmmaker, and founding member of the Center for Popular Music Research at Humboldt University in Berlin, teaches popular music at University of Agder in Norway and wrote *One Sound, Two Worlds: The Blues in a Divided Germany, 1945-1990* (2019, Berghahn).



**DR. JULIA SIMON** is a cultural historian focusing on the blues and 18<sup>th</sup>-century France and author of *Time in the Blues* (2017, Oxford University Press). Her current project, *Debt and Redemption*, examines the articulation of a call for justice in the blues regarding the imposition of debt as a form of bondage.

---

**NICOLE SONNEVELD** is a graduate student in bassoon performance at Roosevelt University. Her scholarly work speaks to her values: justice, equality, and advancement of the marginalized. She is creating an integrated arts curriculum for incarcerated women who struggle with substance abuse.



**IDABEA TOMLIN** is director of operations for the Mississippi Arts and Entertainment Experience, overseeing finances and administration. She is the narrator and proprietor of Maxie's Juke Joint, a permanent exhibit. Tomlin has more than 30 years of museum experience. She earned an MPA from University of Michigan.



**DR. TAMMYL. TURNER**, author of *Dick Waterman: A Life in Blues* (2019, University Press of Mississippi), teaches university courses such as jazz history and history and sociology of rock 'n' roll. She specializes in 20<sup>th</sup>-century American music, among others. She earned a Ph.D. in music history from the University of Mississippi.



**STACEY WILSON** is a scholar, designer, oral historian, and curator of exhibitions at the Mississippi Arts and Entertainment Experience. She won the Southeastern Museums Conference Emerging Museum Professional Award in 2018. Wilson earlier was curator of exhibits at the Louisiana State Museum.



**ELI YAMIN** is a musician, educator, and author of *So You Want to Sing the Blues: A Guide for Performers* (2018, Rowman & Littlefield, with the National Association of Teachers of Singing). His videos for Jazz at Lincoln Center's Jazz Academy have 1 million-plus views. He has been a cultural ambassador for the U.S. State Department.



**AMELY ZHOU** is an orchestral conductor and erhu performer in the Chinese music community. A Chinese emigrant to Canada, she received an Ontario Arts Council grant in 2015 and was the cover story in *WholeNote* magazine in 2017. She teaches in the ethnomusicology program at York University, her alma mater.



**DR. TOM ZLABINGER** is an assistant professor of music at York College/CUNY, where he teaches ethnomusicology and popular music. He earned a B.A. in music from Grinnell College, an M.A. in jazz performance from Queens College, and a Ph.D. in ethnomusicology from the Graduate Center/CUNY.



# SPECIAL THANKS AND RECOGNITION

## INTERNATIONAL CONFERENCE ON THE BLUES PLANNING COMMITTEE

**Lee Aylward**, Program Associate for Education and Community Outreach, Delta Center for Culture and Learning

**Laurissa Backlin**, Assistant Professor of Music

**Gregory Braggs**, University Web Designer

**Ryan Bridges**, Studio/Production Manager, Delta Music Institute

**Kelli Carr**, Tourism Director, Cleveland-Bolivar County Chamber of Commerce

**Tim Colbert**, Chair, DSU Health, Physical Education, and Recreation

**Shelley Collins** (Co-Chair), Professor of Music

**Rolando Herts**, Director, Delta Center for Culture and Learning

**Will Jacks**, Program Manager, Mississippi Delta National Heritage Area

**Heather Miller**, Director of Institutional Grants

**Don Allan Mitchell** (Co-Chair), Associate Professor of English

**Richard Tremmel**, Interim Director, Delta Music Institute

**Shelia Winters**, Program Associate for Projects, Delta Center for Culture and Learning

## DELTA STATE UNIVERSITY

**William N. LaForge**, President

**Charles McAdams**, Provost and Vice President for Academic Affairs

**Michelle Roberts**, Vice President for Executive Affairs

**Jamie Rutledge**, Vice President for Finance & Administration

**Vernell Bennett**, Vice President for Student Affairs

**Rick Munroe**, Vice President for University Advancement and External Relations

**David Breaux**, Dean of the College of Arts and Sciences

**Ann Giger**, Executive Assistant, Office of the President

**Claire Cole**, Coordinator of Executive Services, Office of the President

**Laura Howell**, Director, Bologna Performing Arts Center

**Jeffrey Johns**, Chief of Police, DSU Police Department

### Communications & Marketing

**Peter Szatmary**, Director of Communications & Marketing

**Gregory Braggs**, Web Designer

**Caroline Fletcher**, Social Media Specialist

**Holly Ray**, Graphic Designer

**Campbell Saia**, Photographer/Videographer

**Patricia Malone**, Senior Secretary

The Faculty and Staff of the DMI Entertainment Industry Studies program

Delta Center for Culture and Learning

Division of Languages and Literature

Department of Music

Office of Information Technology Services

Facilities Management

Custodial Services

Delta State University Foundation

**Dakota Conway**, Graduate Assistant



---

## SPECIAL THANKS

---

Mississippi Grounds  
Rory Doyle, *Photography*  
Bolivar County Board of Supervisors  
City of Cleveland  
Delta Arts Alliance  
University Press of Mississippi

## SPONSORS & PARTNERS

---

Chisholm Foundation  
Delta Center for Culture and Learning  
Delta Music Institute  
Entergy  
International Delta Blues Project  
Mississippi Delta National Heritage Area  
Visit Mississippi/Mississippi  
Development Authority

## MODERATORS

---

Brian Becker  
Vernell Bennett  
Craig Gill  
Shalando Jones  
Douglas Mark  
Don Allan Mitchell  
April Mondy  
Cetin "Chet" Oguz  
Bret Pimentel  
Gabriel Scala  
Julia Thorn  
Robin Webb

---

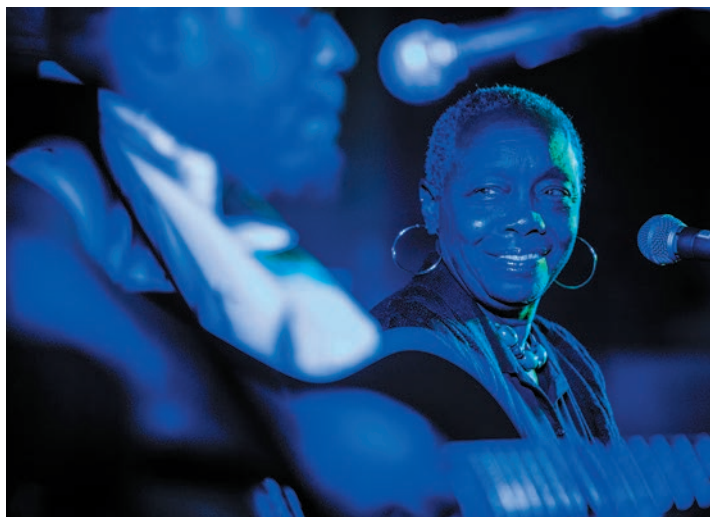
## STUDY THE BLUES AT DELTA STATE UNIVERSITY

One of DSU's newest programs of study is the Blues Studies minor, which launched in 2015. Additionally, DSU is proud to announce the creation of the International Blues Scholars Program. This multi-disciplinary approach to the study of the Blues includes in-depth examination of the musical form and its influence in art, literature, history, and economic development. The International Blues Scholars Program is an online academic certificate program available to graduate and undergraduate students all over the world. For more information, visit [deltacenterdsu.com](http://deltacenterdsu.com).

---

## THE DELTA CENTER FOR CULTURE AND LEARNING

The mission of The Delta Center for Culture and Learning is to promote greater understanding of Mississippi Delta culture and history and its significance to the world through education, partnerships, and community engagement. The Delta Center is an interdisciplinary program that focuses on the humanities and social sciences as they relate to the Delta. The Delta Center advances Delta State University's participation in promoting and celebrating the unique heritage of the Delta while also addressing the longstanding social, economic, and cultural challenges that inhibit regional advancement. [deltacenterdsu.com](http://deltacenterdsu.com)









DELTA STATE UNIVERSITY  
BOLOGNA PERFORMING ARTS CENTER

25 years of  
ARTS AND ENTERTAINMENT

2019-20



**AUG 22** **KANSAS**  
Sponsored by  
Needle Specialty Products



**SEPT 5** **JASON ISBELL AND THE 400 UNIT**  
Locally Sponsored by  
Robinson Electric Company



**SEPT 19** **CRAIG MORGAN**  
Sponsored by  
Cannon Motors



**DINO-LIGHT**  
A GLOW-IN-THE-DARK ADVENTURE  
**SEPT 24** **DINO - LIGHT**  
Sponsored by  
Bayer



**OCT 3** **KOOL & THE GANG**



**OCT 17** **BALLETX**  
Funded in part by  
SouthArts and the National  
Endowment for the Arts



**OCT 24** **MISS NELSON HAS A FIELD DAY**



**OCT 29** **DREW HOLCOMB & THE NEIGHBORS**



**NOV 11** **TEDESCHI TRUCKS BAND**  
Sponsored by  
Planters Bank



**DEC 3** **A CHARLIE BROWN CHRISTMAS**  
Sponsored by  
Bolivar Medical Center



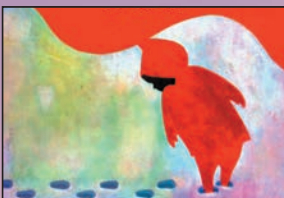
**JAN 15** **THE SIMON & GARFUNKEL STORY**  
Sponsored by  
Quality Steel



**JAN 21** **WALK ON: THE STORY OF ROSA PARKS**  
Sponsored by  
Entergy



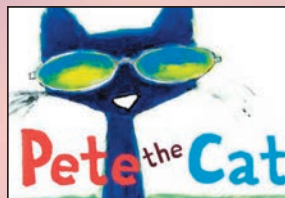
**FEB 4** **FINDING NEVERLAND**



**FEB 13** **THE SNOWY DAY AND OTHER STORIES**



**MAR 5** **AN ACOUSTIC EVENING with MARK CHESNUTT & JOE DIFFIE**



**MAR 25** **PETE THE CAT**



**MAR 28** **BEAUTIFUL: THE CAROLE KING MUSICAL**  
Sponsored by  
Guaranty Bank



**APR 23** **THE ALLMAN BETTS BAND**



**MAY 4** **THE SPONGEBOB MUSICAL**

VISIT OUR WEBSITE  
[WWW.BOLOGNAPAC.COM](http://WWW.BOLOGNAPAC.COM)  
FOR ADDITIONAL EVENTS  
ADDED THROUGHOUT  
THE SEASON

**TBA** **TO BE ANNOUNCED**  
To be sponsored by  
Wade Incorporated

MAIN STAGE MATINEE

TICKETS ON SALE NOW!

[WWW.BOLOGNAPAC.COM](http://WWW.BOLOGNAPAC.COM) (662) 846-4626



**DELTA STATE UNIVERSITY** is a public institution providing a comprehensive undergraduate and graduate curriculum to approximately 3,500 students representing all of the states and 50 different countries. Dozens of degree programs on the undergraduate level provide educational opportunities in the Colleges of Arts and Sciences, Business, and Education and in the Robert E. Smith School of Nursing. Graduate programs on the master's, educational specialist, and doctoral levels provide advanced training in a broad range of disciplines.

Acknowledging its beginning as a teacher's college, the University sustains excellence in teacher education while continuing to expand offerings in traditional as well as unique programs of study. From the core disciplines such as arts, humanities, and sciences, to unique programs such as Commercial Aviation, the Delta Music Institute, and the nationally-recognized Geospatial Information Technology program, the University is committed to meeting the evolving needs of the students it serves. [www.deltastate.edu](http://www.deltastate.edu)



Save the Date



INTERNATIONAL  
CONFERENCE

ON THE

Blues

COMING:

OCTOBER 2, 2020

- Plus -

**Music Tourism Convention**

September 29 - October 1, 2020

*The world's largest conference on music tourism*

**DELTA STATE  
UNIVERSITY** 

---

Cleveland, MS | 1.800.GO.TO.DSU | [www.deltastate.edu](http://www.deltastate.edu)